
Marine Weather Forecast for Shell Noches GC19 PPL Geotechnical
Forecast valid as of 27-Mar-2025 0800 GMT

All times are local.

Today

Winds: E, 15-20 kts.
Waves: NE, 3-4 feet, 5-6 sec.
No currents available.

Tonight

Winds: E, 15-20 kts.
Waves: NE, 5-6 feet, 6-7 sec.
No currents available.

Friday

Winds: NE, 20-25 kts.
Waves: NE, 7-8 feet, 7-8 sec.
No currents available.

Friday Night

Winds: NE, 15-20 kts.
Waves: NE, 7-8 feet, 8-9 sec.
No currents available.

Saturday

Winds: NE, 15-20 kts.
Waves: NE, 7-8 feet, 7-8 sec.
No currents available.

Saturday Night

Winds: NE, 15-20 kts.
Waves: NE, 6-7 feet, 7-8 sec.
No currents available.

Sunday

Winds: N, 10-15 kts.
Waves: NE, 5-6 feet, 7-8 sec.
No currents available.

Sunday Night

Winds: N, 10-15 kts.
Waves: NE, 3-4 feet, 6-7 sec.
No currents available.

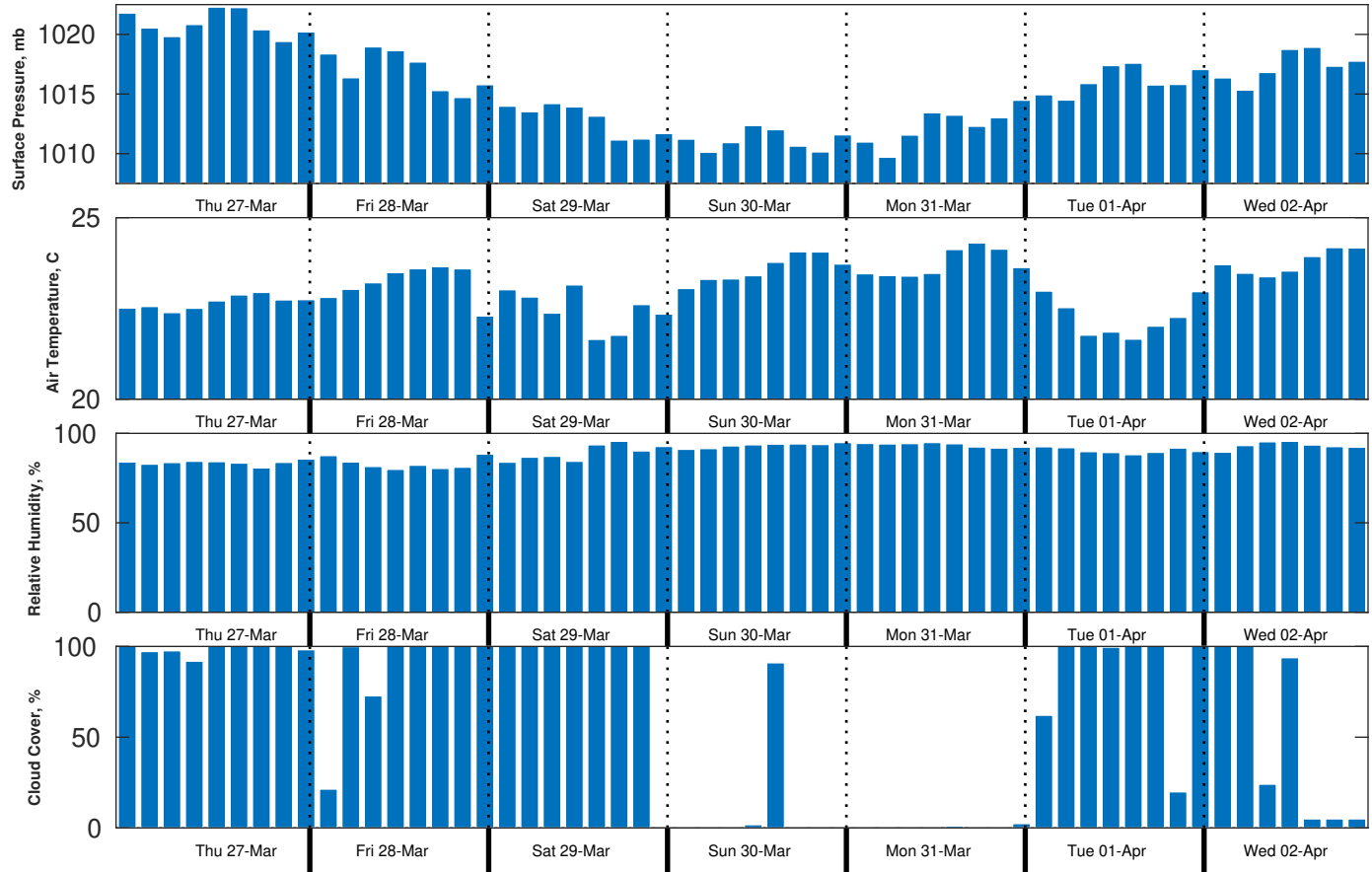
Monday

Winds: N, 5-10 kts.
Waves: NE, 3-4 feet, 6-7 sec.
No currents available.

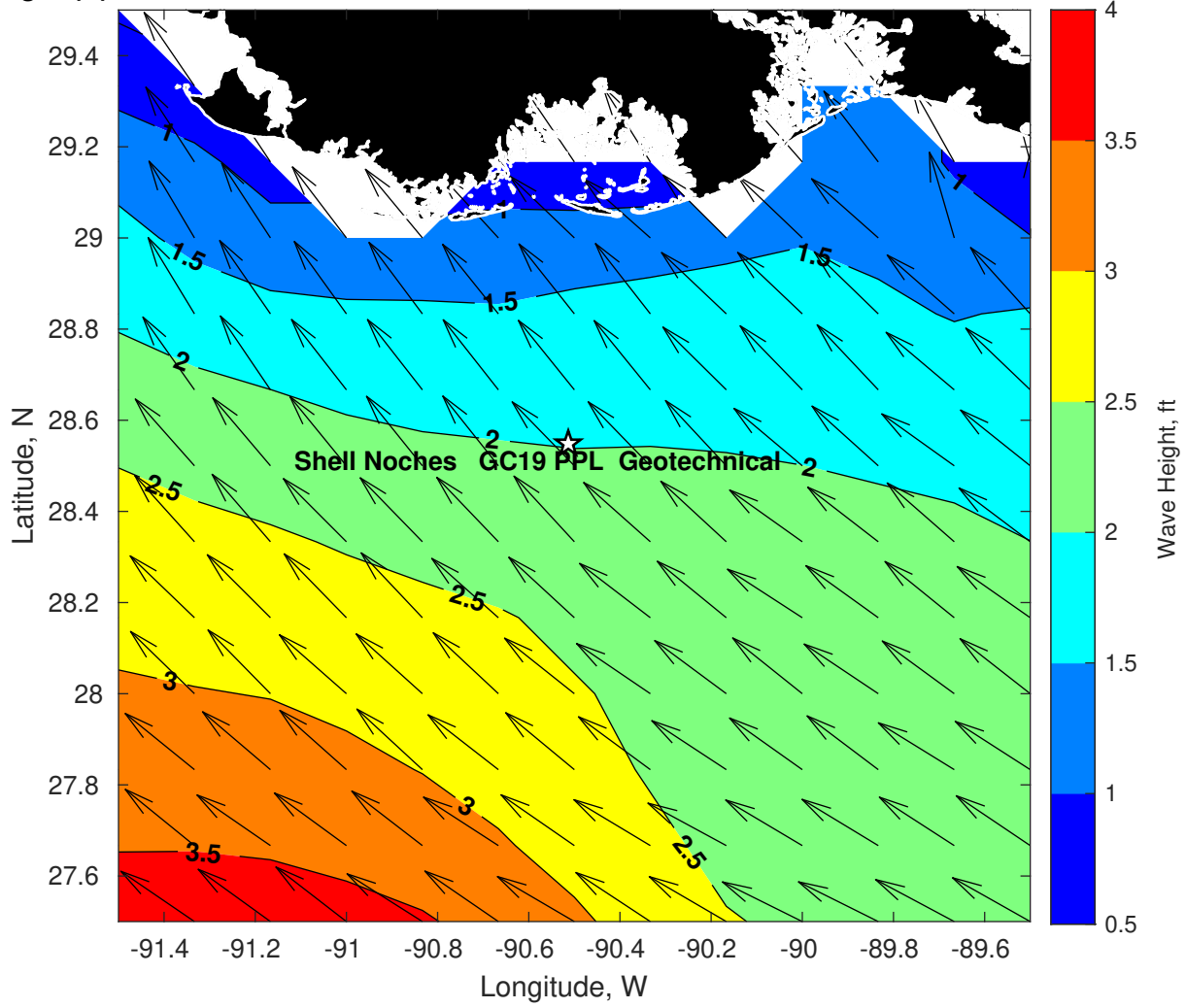
Monday Night

Winds: NE, 10-15 kts.
Waves: NE, 3-4 feet, 6-7 sec.
No currents available.

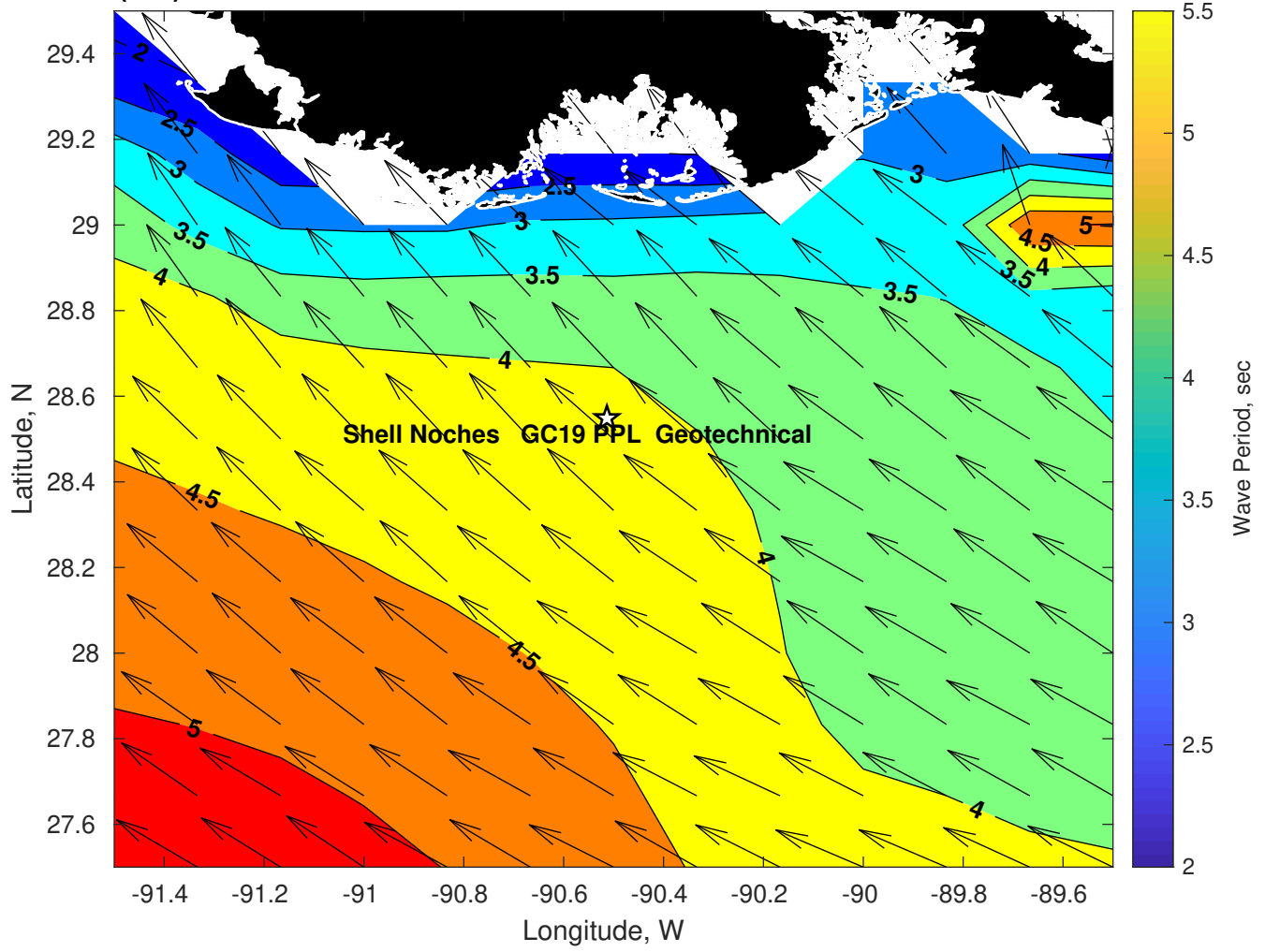
Met Forecast for Shell Noches GC19 PPL Geotechnical from 27-Mar-2025 00:00:00 to 03-Apr-2025 00:00:00



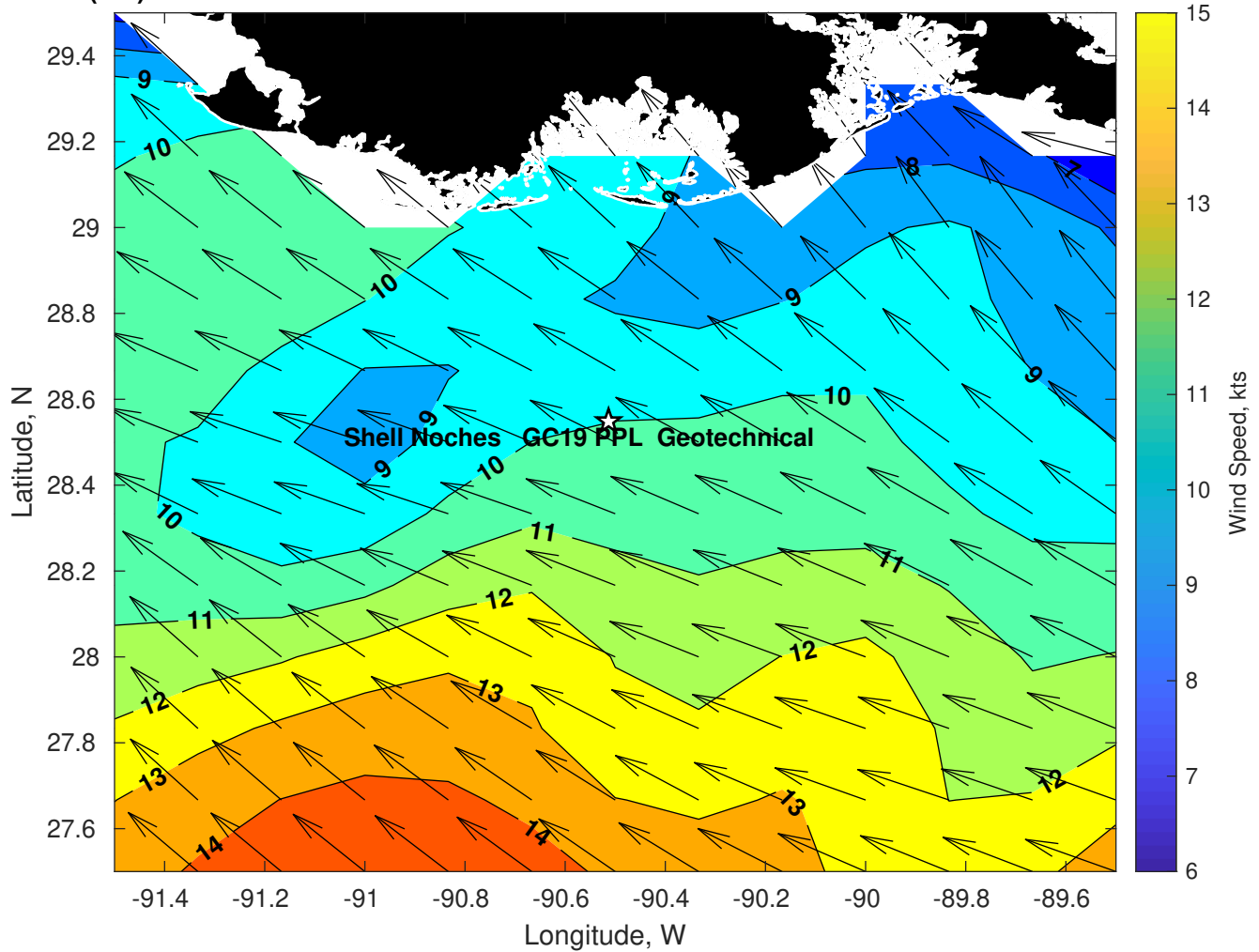
Wave Height (ft) for Shell Noches GC19 PPL Geotechnical at 27-Mar-2025 09:00:00



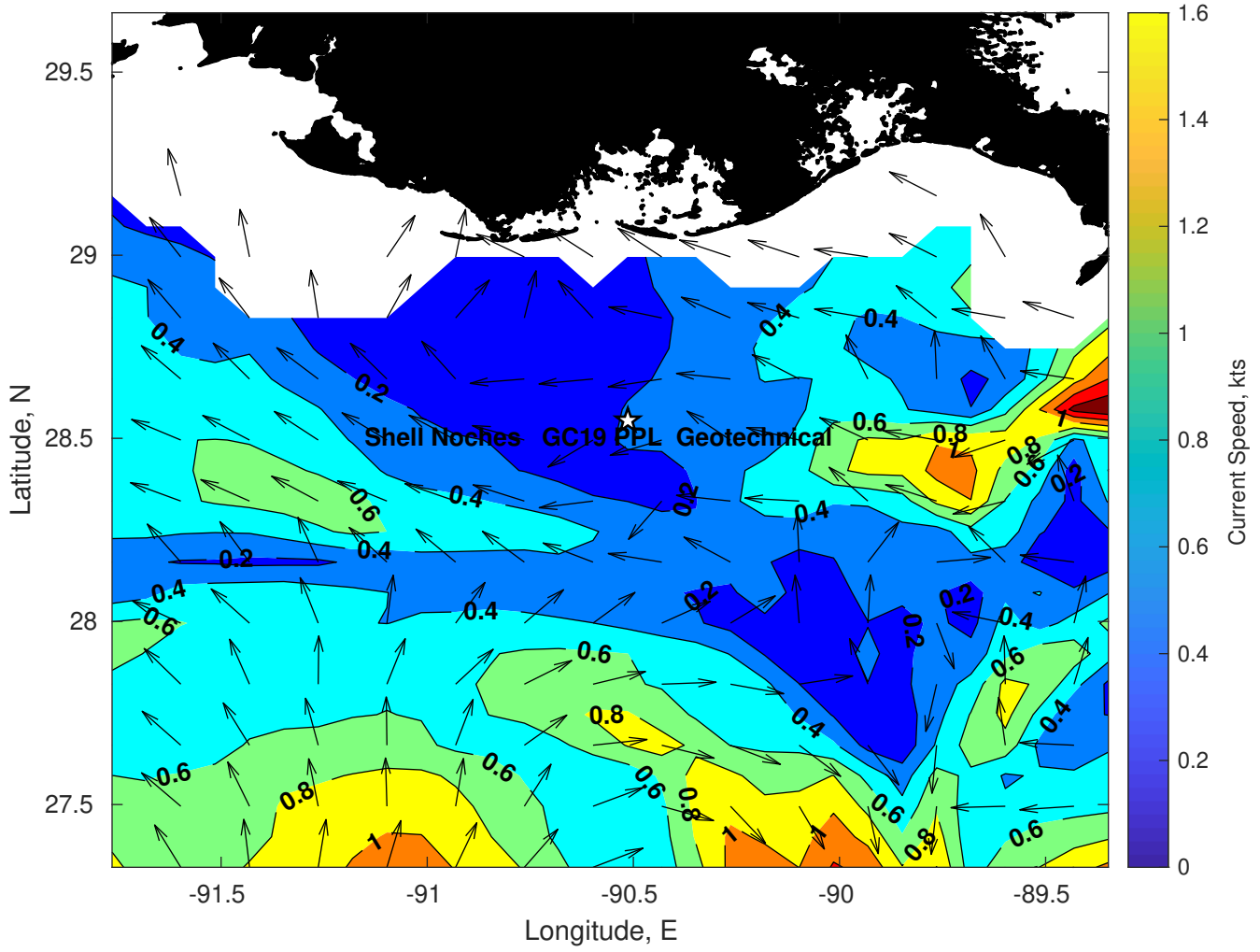
Wave Period (sec) for Shell Noches GC19 PPL Geotechnical at 27-Mar-2025 09:00:00



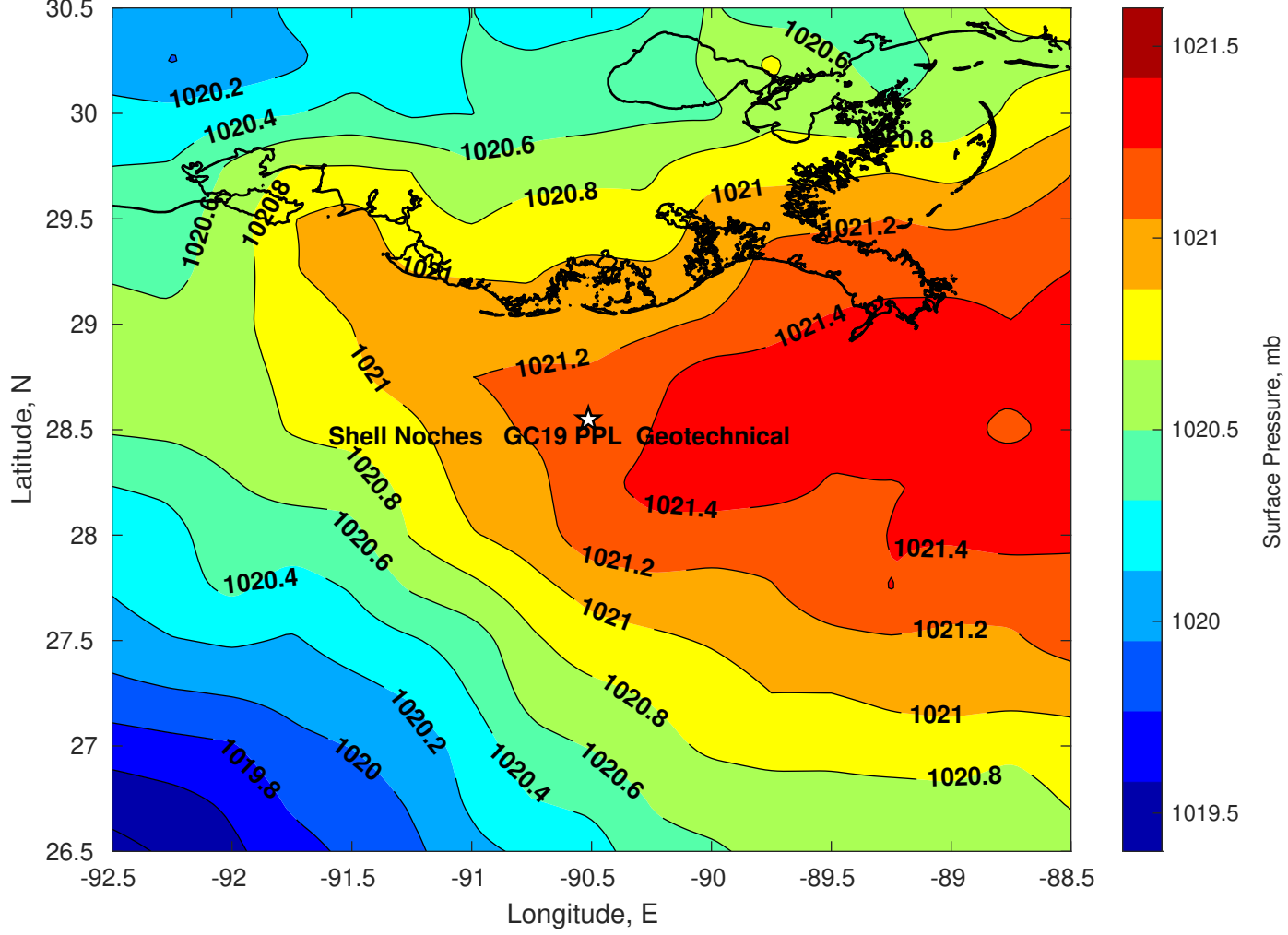
Winds (kts) for Shell Noches GC19 PPL Geotechnical at 27-Mar-2025 09:00:00



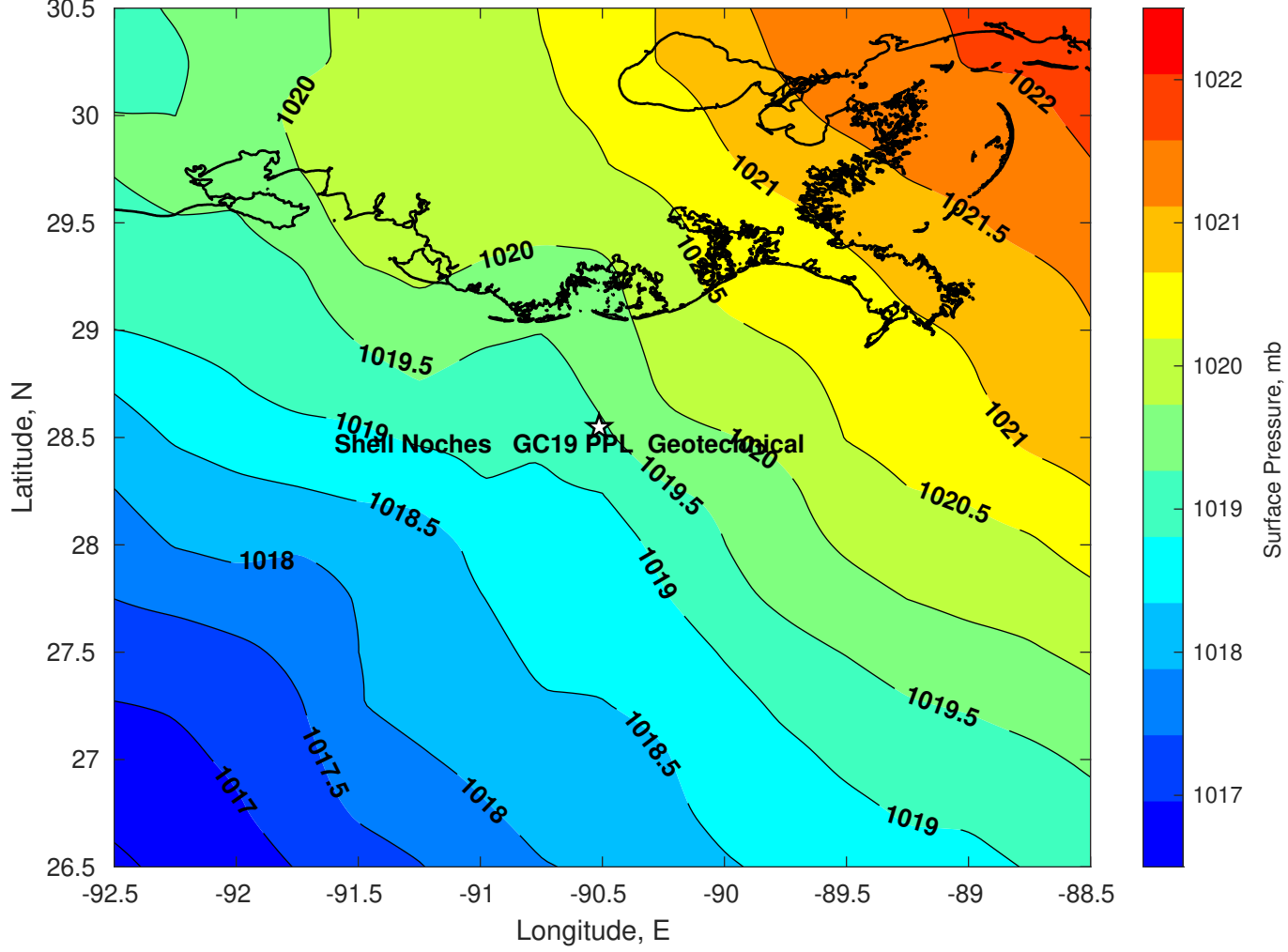
Surface Currents for Shell Noches GC19 PPL Geotechnical at 26-Mar-2025 00:00:00



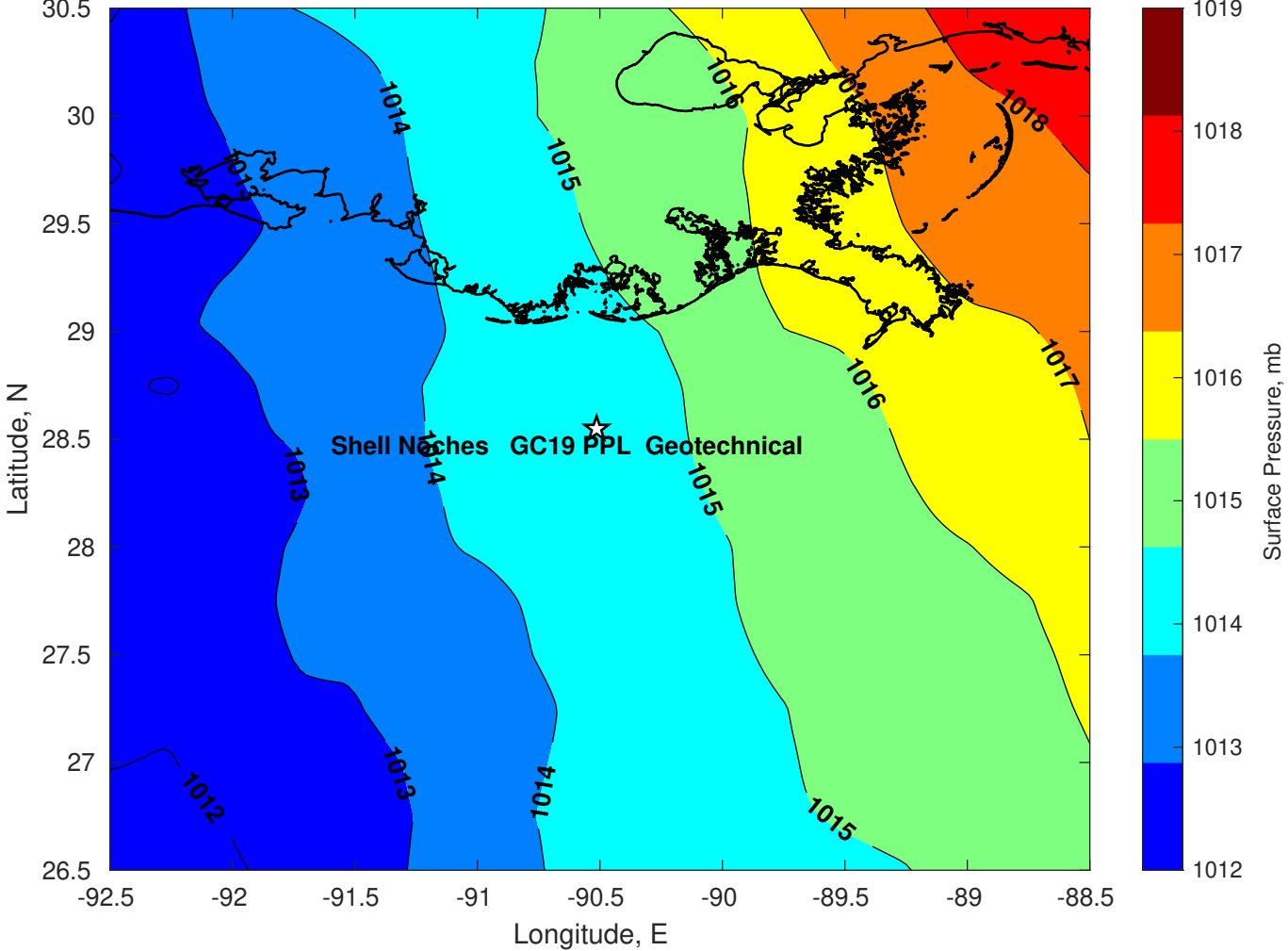
Surface Pressure (mb) for Shell Noches GC19 PPL Geotechnical at 27-Mar-2025 00:00:00



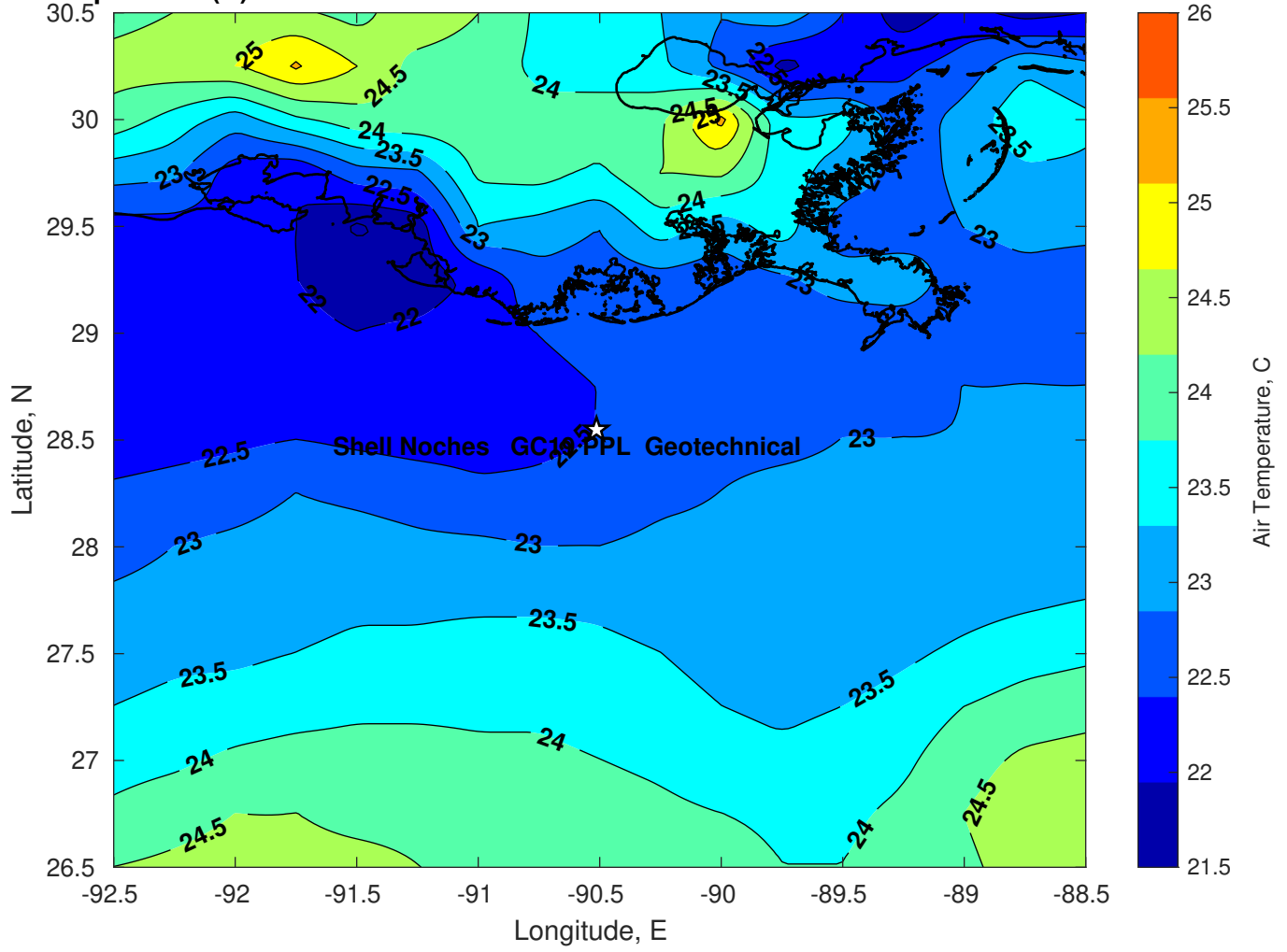
Surface Pressure (mb) for Shell Noches GC19 PPL Geotechnical at 28-Mar-2025 00:00:00



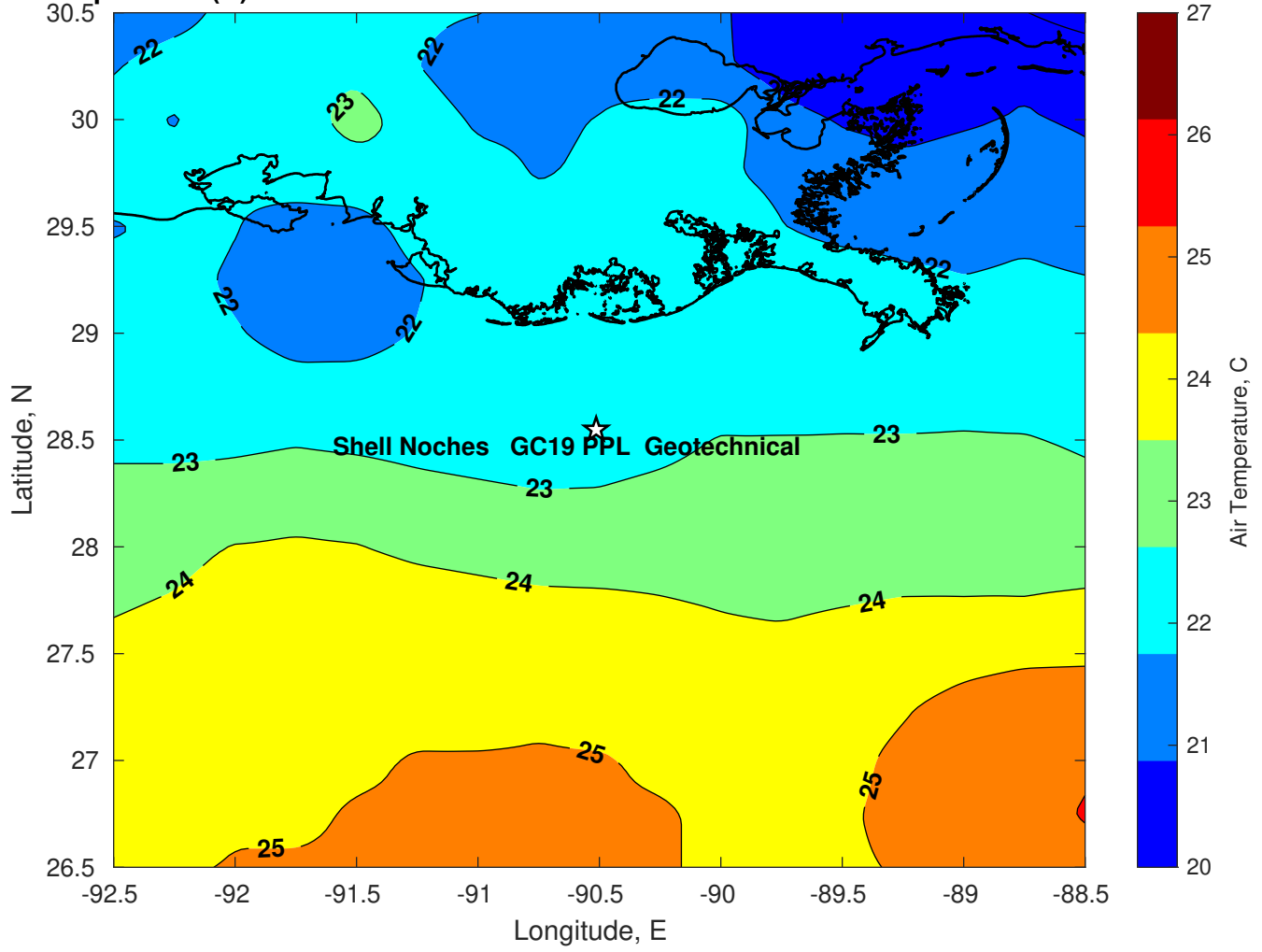
Surface Pressure (mb) for Shell Noches GC19 PPL Geotechnical at 29-Mar-2025 00:00:00



Air Temperature (C) for Shell Noches GC19 PPL Geotechnical at 27-Mar-2025



Air Temperature (C) for Shell Noches GC19 PPL Geotechnical at 27-Mar-2025



Air Temperature (C) for Shell Noches GC19 PPL Geotechnical at 27-Mar-2025

