

\*\*\*\*\*

Marine Weather Forecast for TOTAL Namibia GTS

Forecast valid as of 28-Mar-2025 0800 GMT

\*\*\*\*\*

All times are local.

Today

Winds: N, 10-15 kts.

Waves: N, 5-6 feet, 7-8 sec.

No currents available.

Tonight

Winds: N, 10-15 kts.

Waves: N, 5-6 feet, 8-9 sec.

No currents available.

Saturday

Winds: N, 15-20 kts.

Waves: N, 4-5 feet, 18-19 sec.

No currents available.

Saturday Night

Winds: NE, 15-20 kts.

Waves: NW, 5-6 feet, 17-18 sec.

No currents available.

Sunday

Winds: NE, 20-25 kts.

Waves: N, 9-10 feet, 16-17 sec.

No currents available.

Sunday Night

Winds: NE, 20-25 kts.

Waves: NW, 11-12 feet, 16-17 sec.

No currents available.

Monday

Winds: NE, 20-25 kts.

Waves: NW, 12-13 feet, 15-16 sec.

No currents available.

Monday Night

Winds: NE, 20-25 kts.

Waves: NW, 12-13 feet, 14-15 sec.

No currents available.

Tuesday

Winds: NE, 20-25 kts.

Waves: NW, 11-12 feet, 13-14 sec.

No currents available.

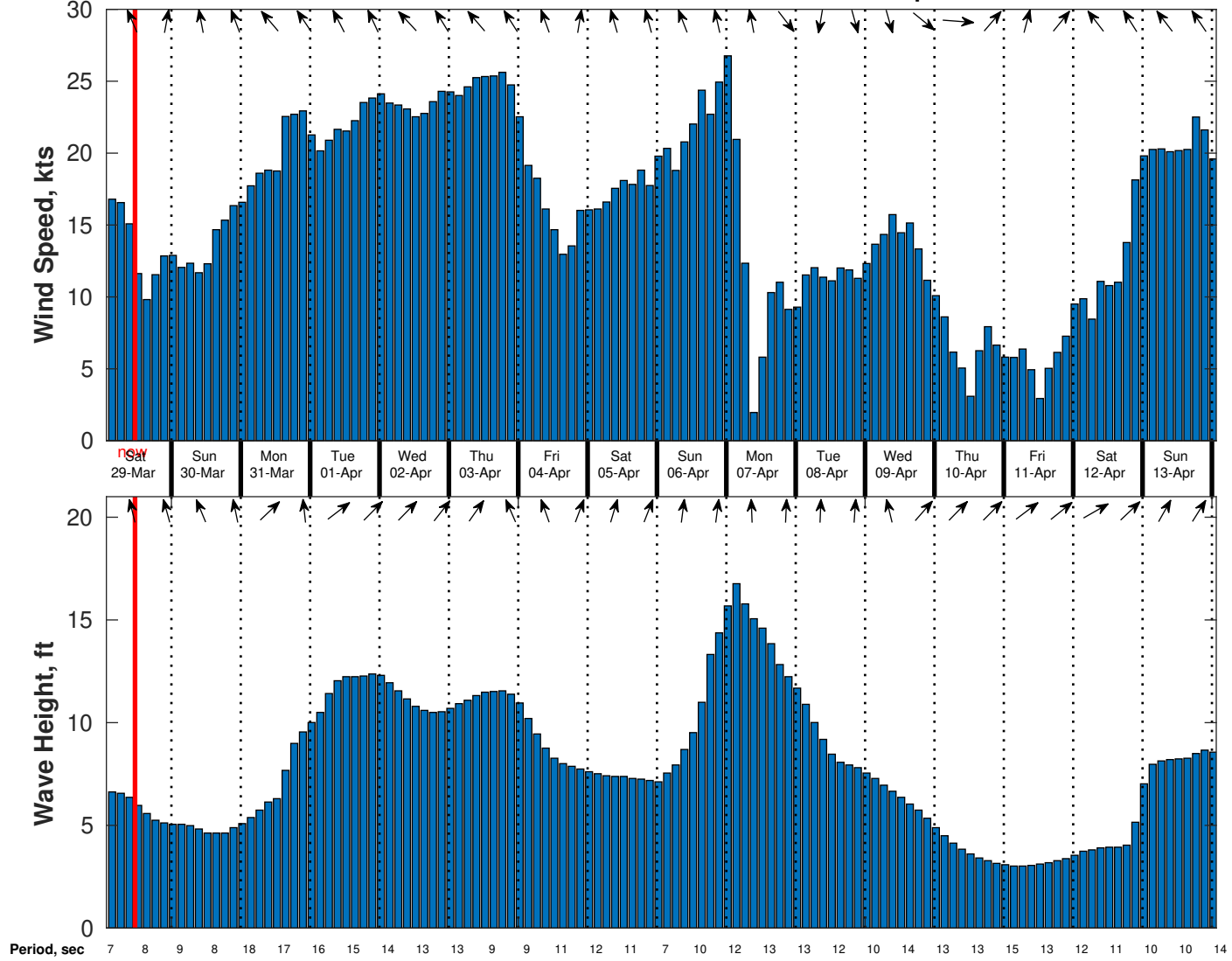
Tuesday Night

Winds: NE, 20-25 kts.

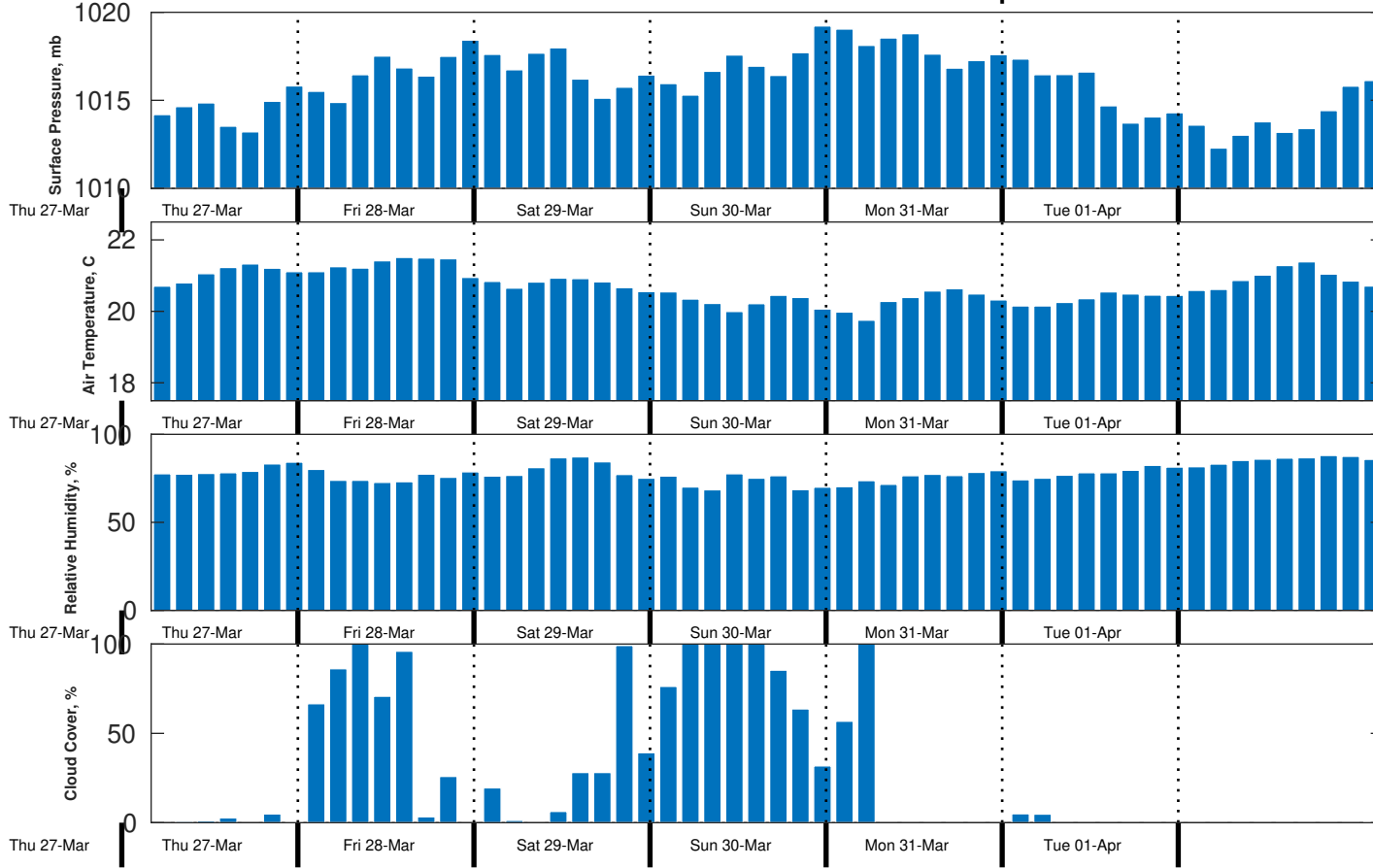
Waves: NW, 11-12 feet, 12-13 sec.

No currents available.

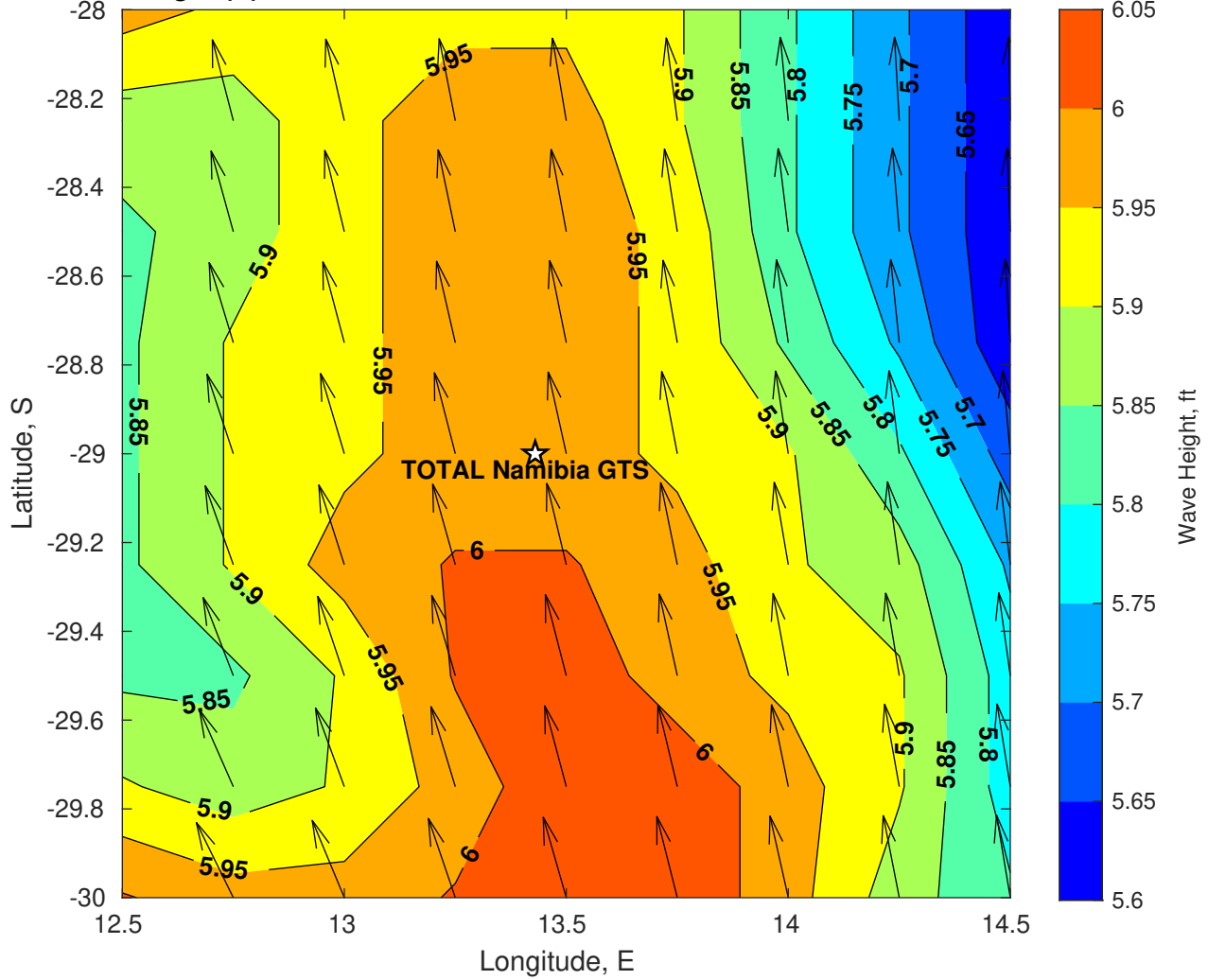
Wind & Wave Forecast for TOTAL Namibia GTS from 28-Mar-2025 02:00:00 to 13-Apr-2025 02:00:00



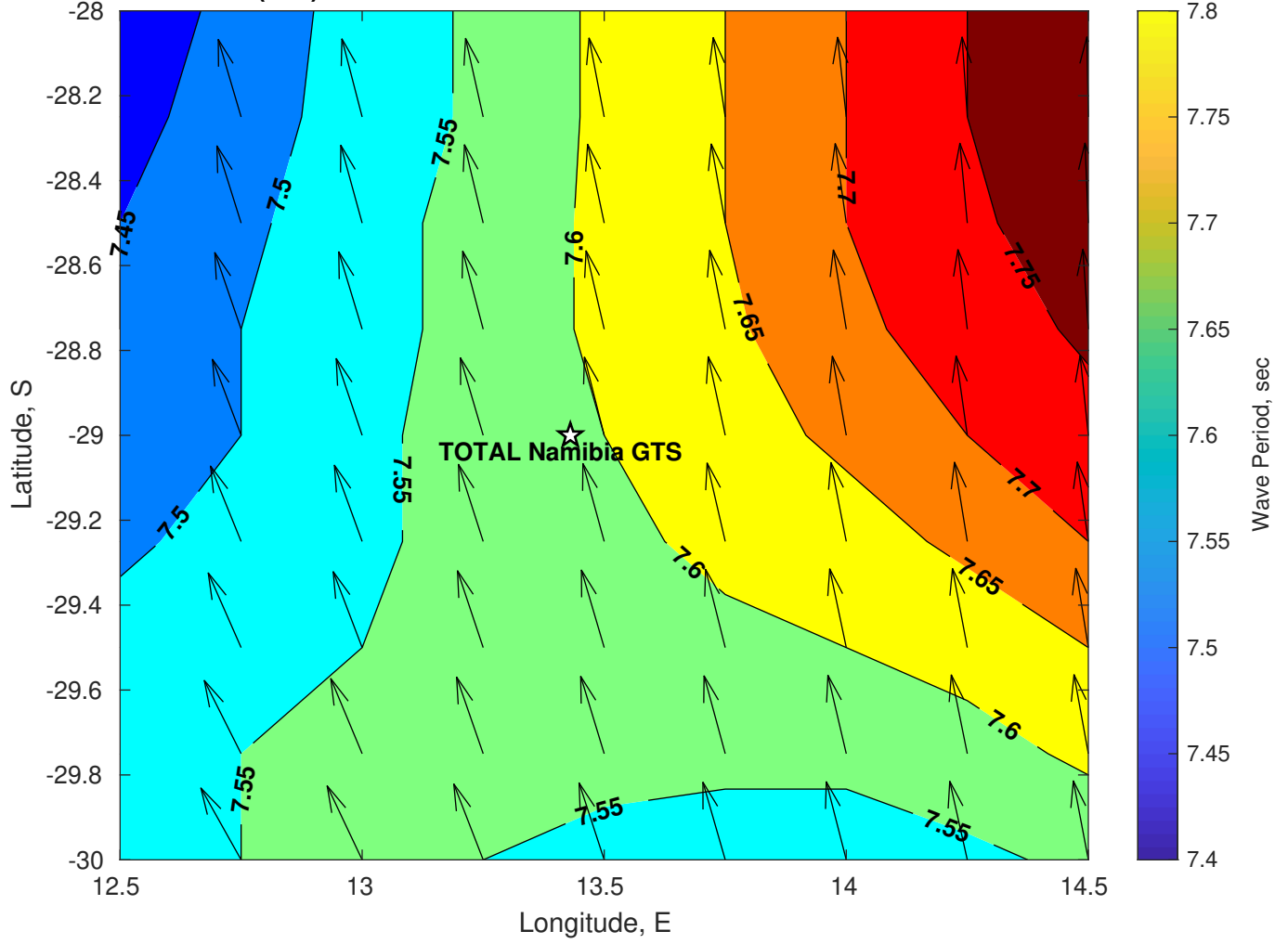
### Met Forecast for TOTAL Namibia GTS from 28-Mar-2025 00:00:00 to 04-Apr-2025 00:00:00



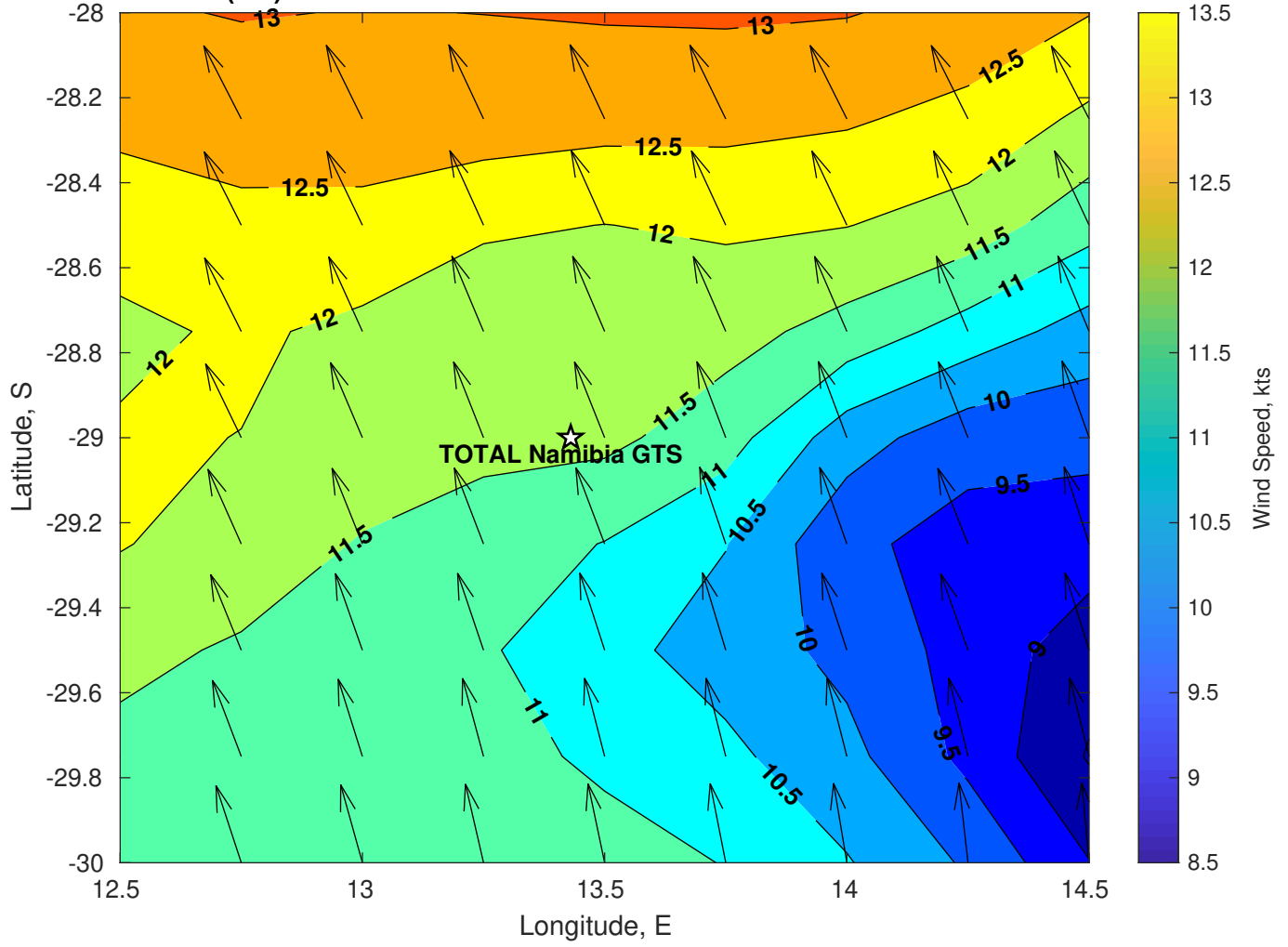
Wave Height (ft) for TOTAL Namibia GTS at 28-Mar-2025 09:00:00



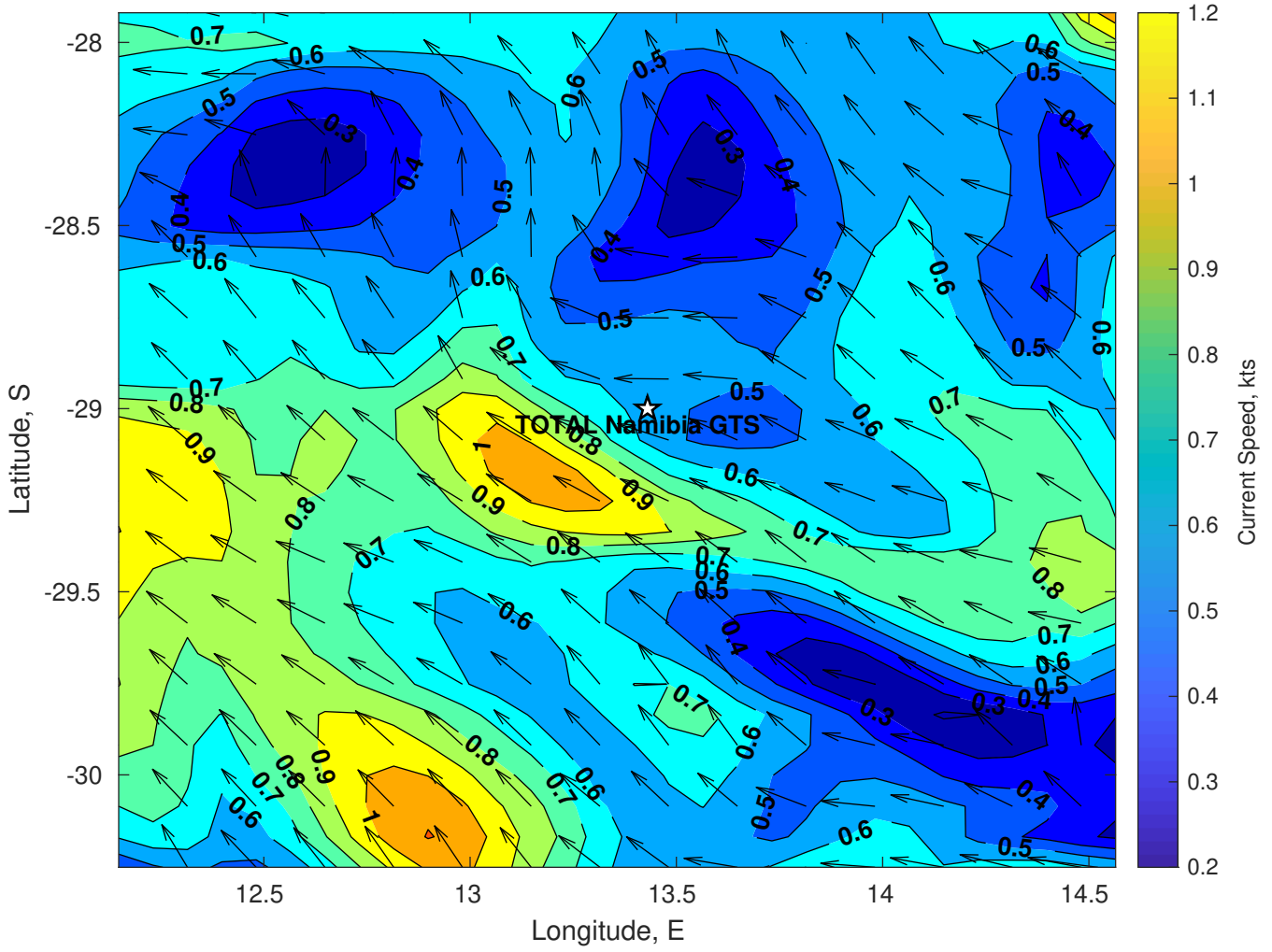
Wave Period (sec) for TOTAL Namibia GTS at 28-Mar-2025 09:00:00



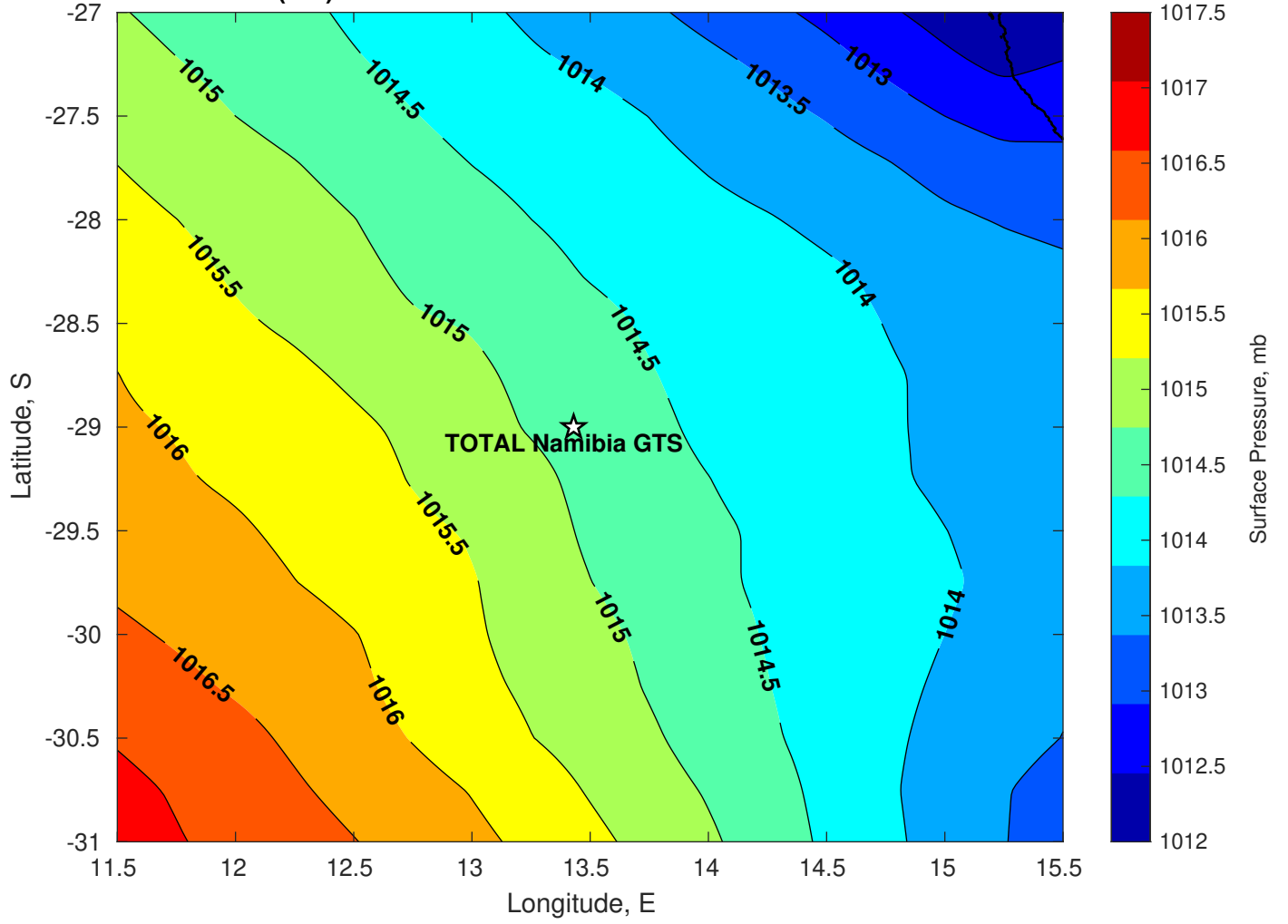
**Winds (kts) for TOTAL Namibia GTS at 28-Mar-2025 09:00:00**



Surface Currents for TOTAL Namibia GTS at 27-Mar-2025 00:00:00

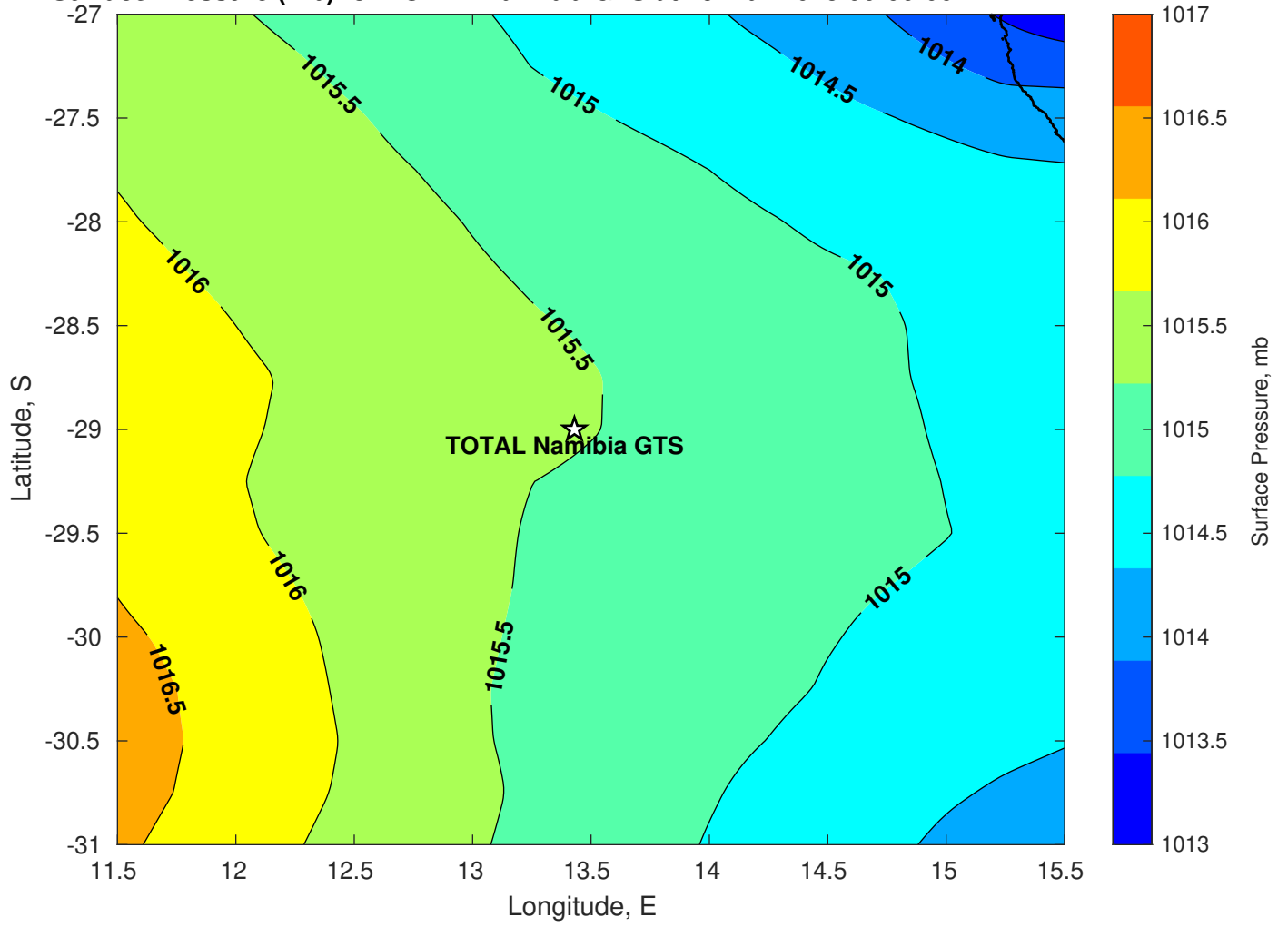


Surface Pressure (mb) for TOTAL Namibia GTS at 28-Mar-2025 00:00:00

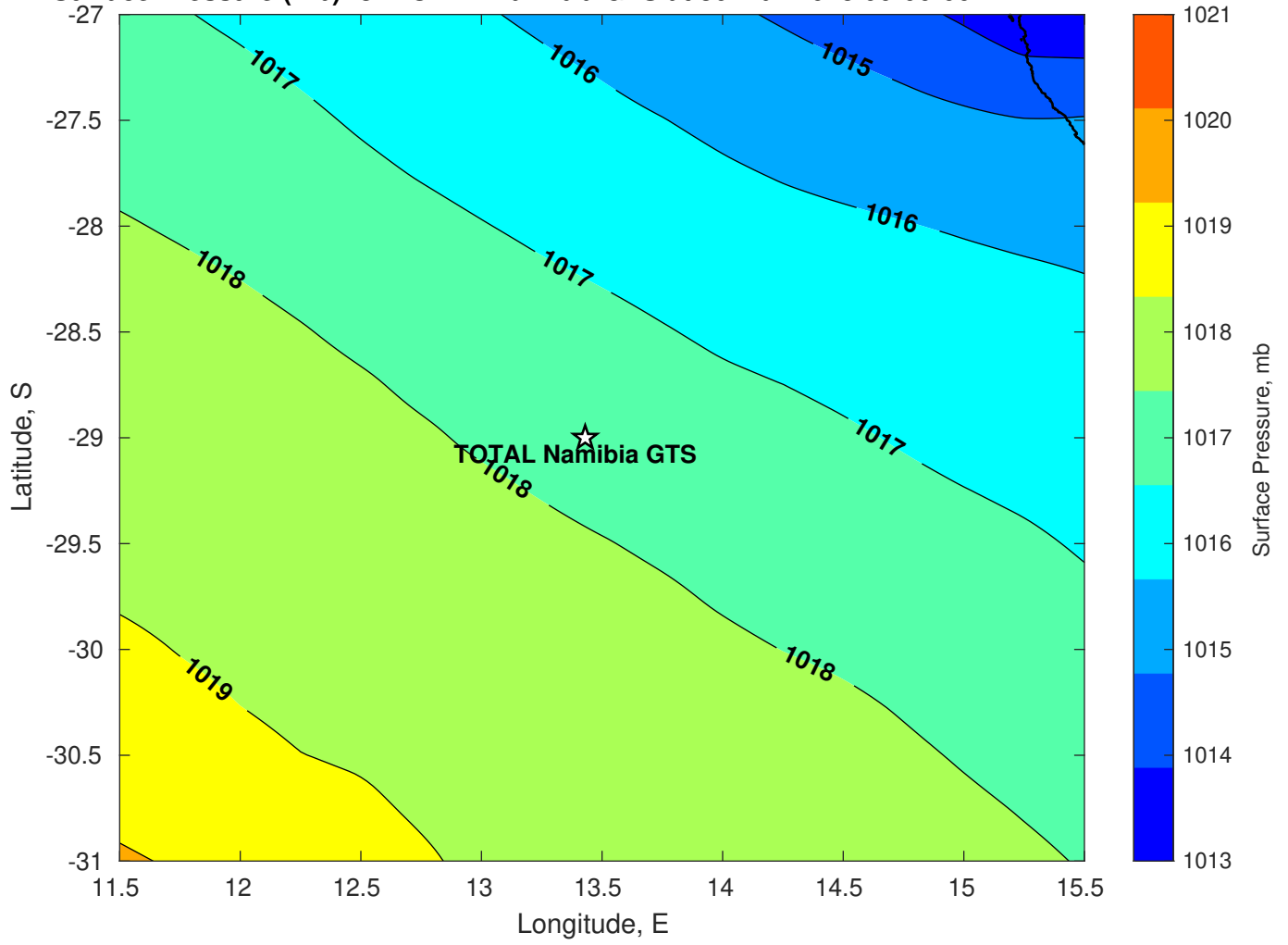




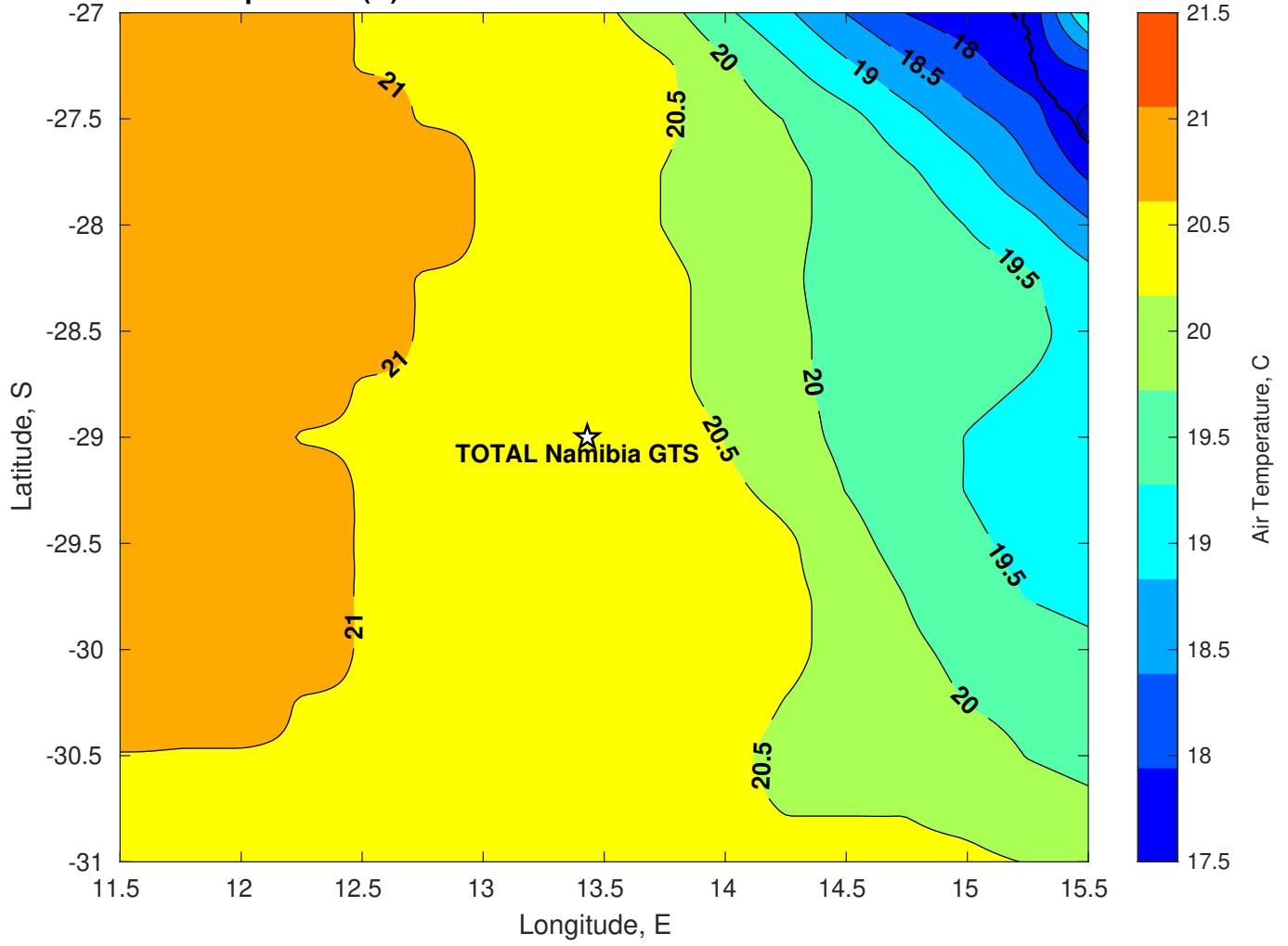
Surface Pressure (mb) for TOTAL Namibia GTS at 29-Mar-2025 00:00:00



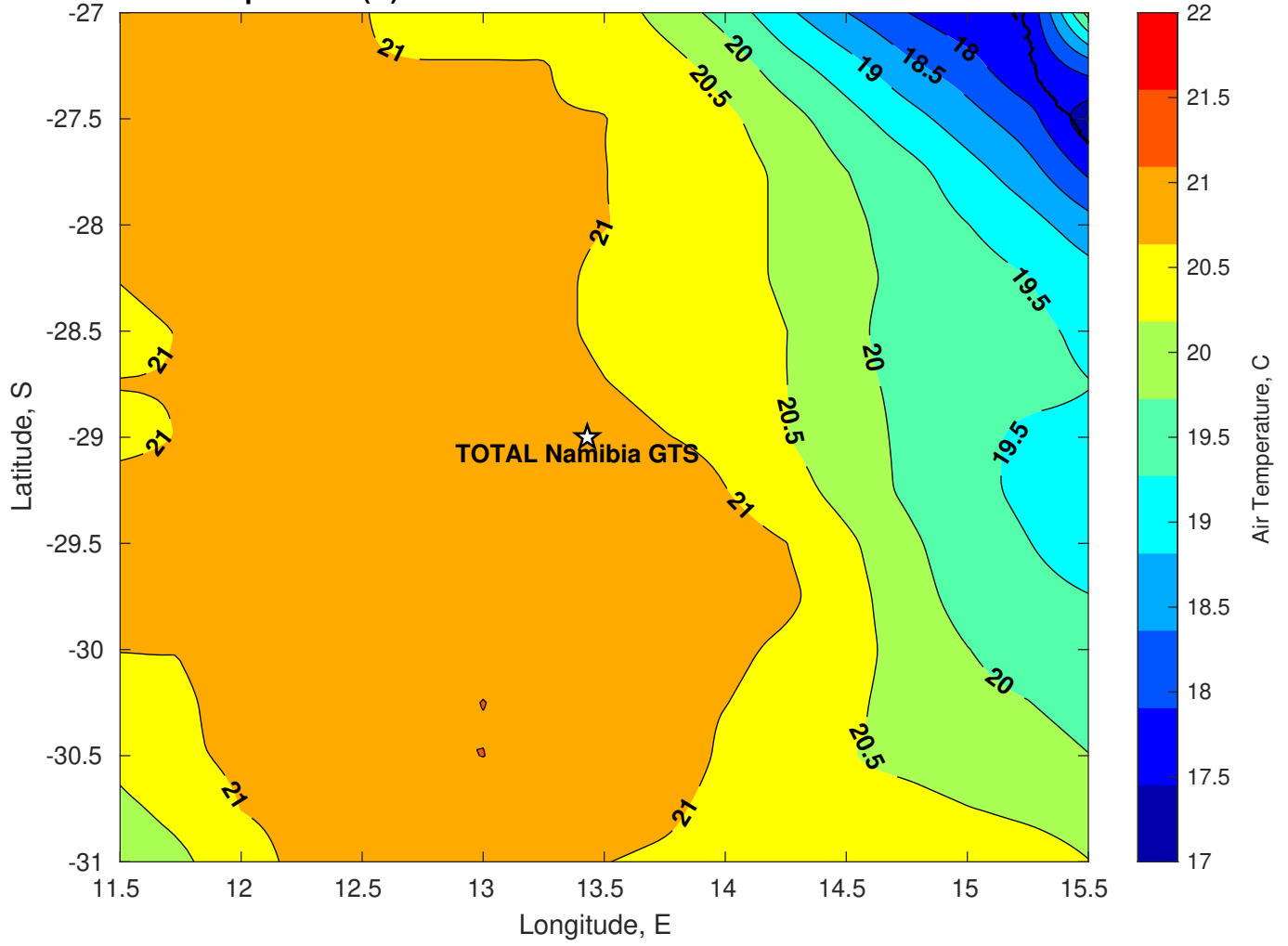
Surface Pressure (mb) for TOTAL Namibia GTS at 30-Mar-2025 00:00:00



**Air Temperature (C) for TOTAL Namibia GTS at 28-Mar-2025**



Air Temperature (C) for TOTAL Namibia GTS at 28-Mar-2025



**Air Temperature (C) for TOTAL Namibia GTS at 28-Mar-2025**

