

\*\*\*\*\*

Marine Weather Forecast for CSA (ONHYM) PPL EBS - Sierra Leone

Forecast valid as of 29-Mar-2025 0800 GMT

\*\*\*\*\*

All times are local.

Today

Winds: N, 5-10 kts.

Waves: N, 1-2 feet, 11-12 sec.

No currents available.

Tonight

Winds: NW, 10-15 kts.

Waves: N, 1-2 feet, 11-12 sec.

No currents available.

Sunday

Winds: NW, 10-15 kts.

Waves: N, 1-2 feet, 11-12 sec.

No currents available.

Sunday Night

Winds: NW, 10-15 kts.

Waves: N, 1-2 feet, 20-21 sec.

No currents available.

Monday

Winds: W, 5-10 kts.

Waves: N, 1-2 feet, 19-20 sec.

No currents available.

Monday Night

Winds: NW, 10-15 kts.

Waves: N, 2-3 feet, 17-18 sec.

No currents available.

Tuesday

Winds: W, 10-15 kts.

Waves: N, 2-3 feet, 19-20 sec.

No currents available.

Tuesday Night

Winds: W, 10-15 kts.

Waves: N, 3-4 feet, 16-17 sec.

No currents available.

Wednesday

Winds: NW, 10-15 kts.

Waves: N, 3-4 feet, 15-16 sec.

No currents available.

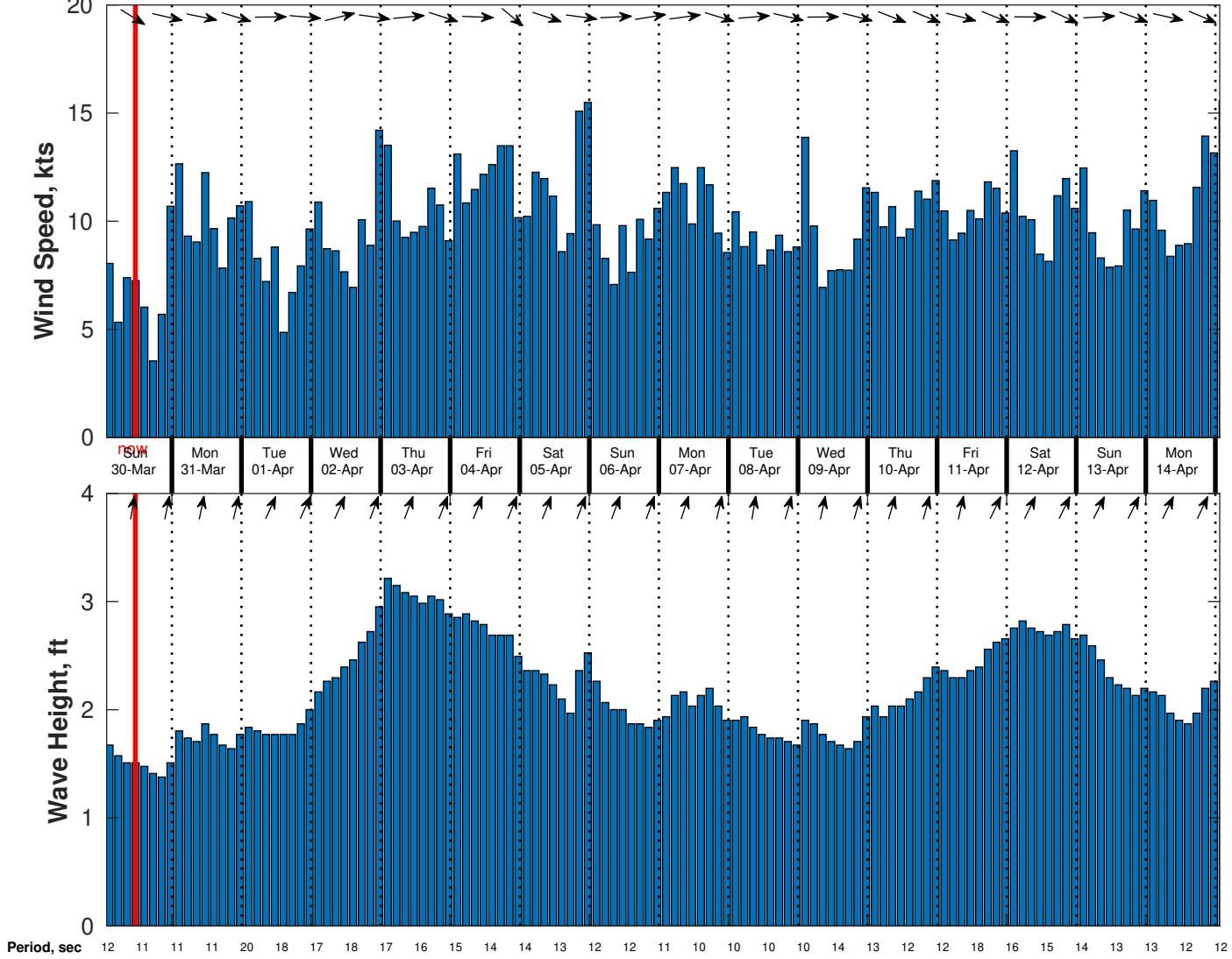
Wednesday Night

Winds: W, 10-15 kts.

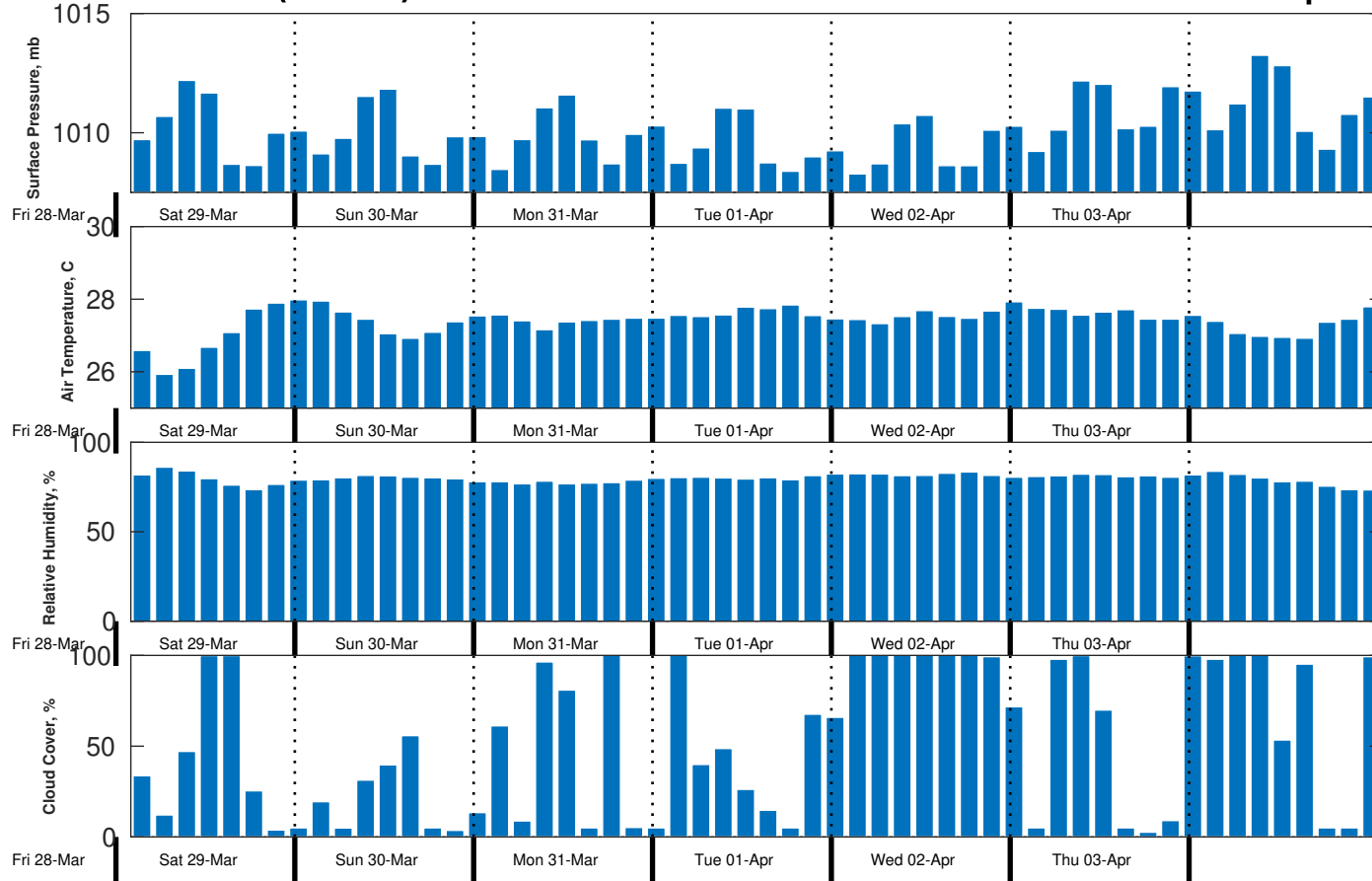
Waves: N, 2-3 feet, 14-15 sec.

No currents available.

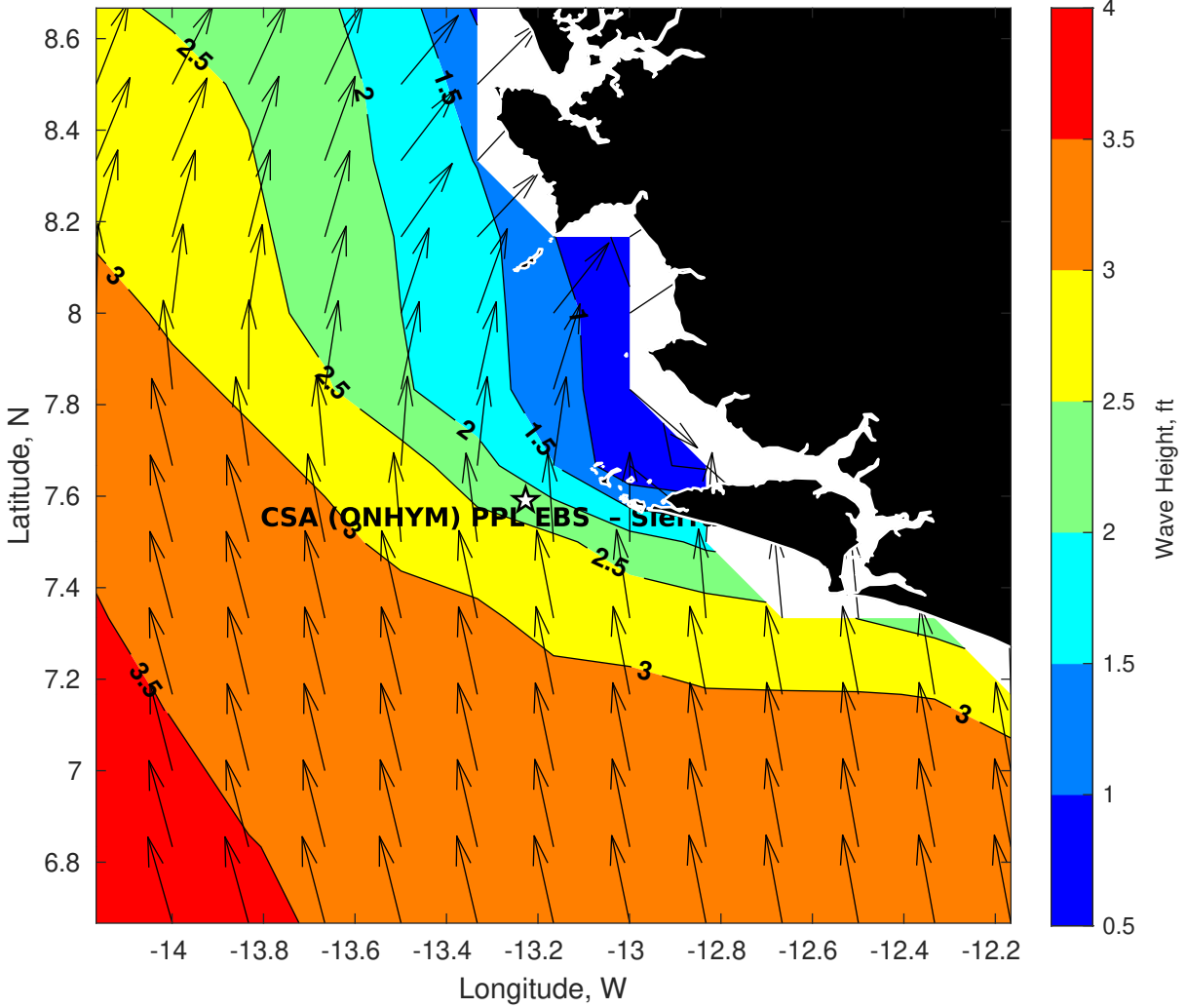
**Wind & Wave Forecast for CSA (ONHYM) PPL EBS - Sierra Leone from 29-Mar-2025 01:00:00 to 14-Apr-2025 01:00:00**



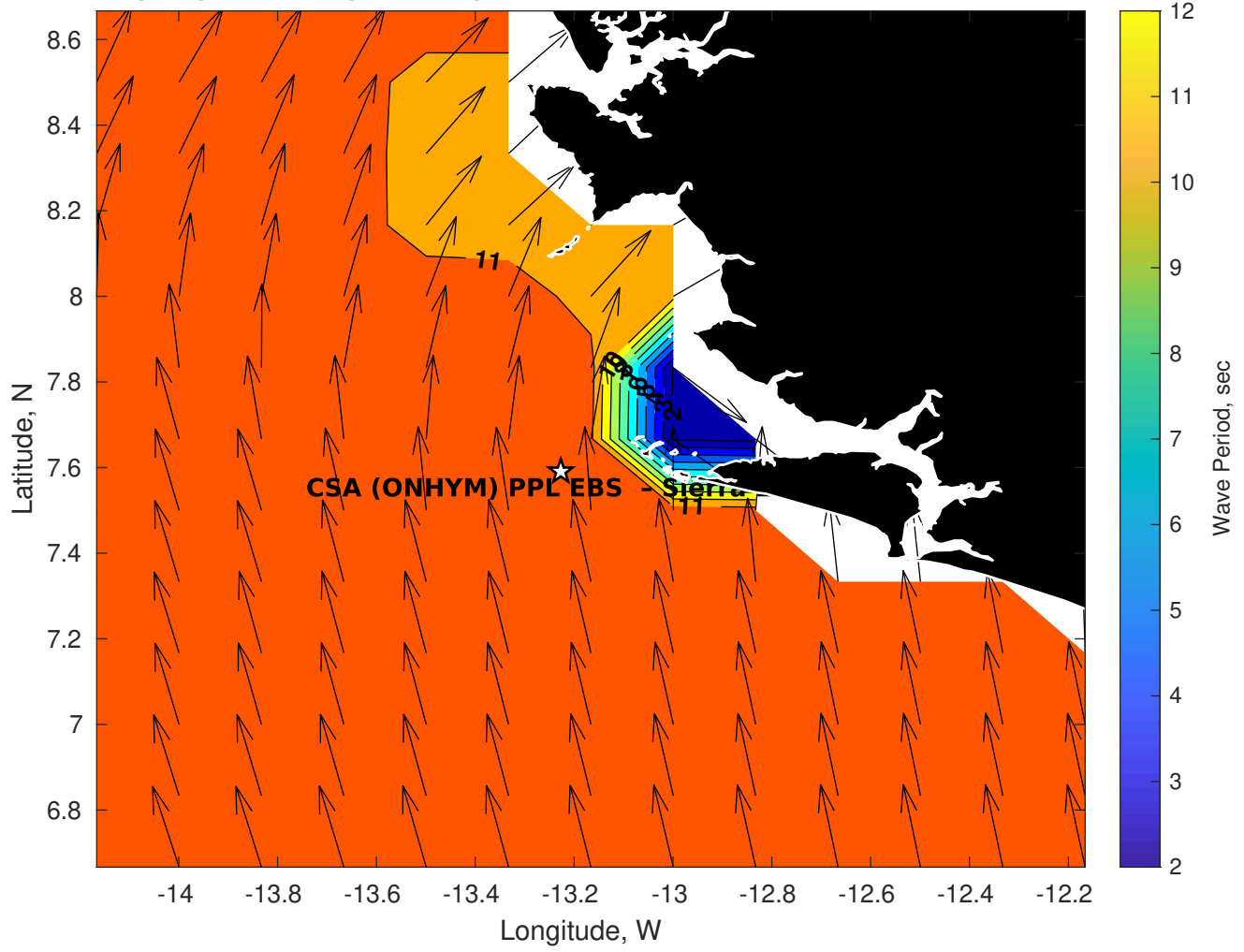
### Met Forecast for CSA (ONHYM) PPL EBS - Sierra Leone from 29-Mar-2025 00:00:00 to 05-Apr-2025 00:00:00



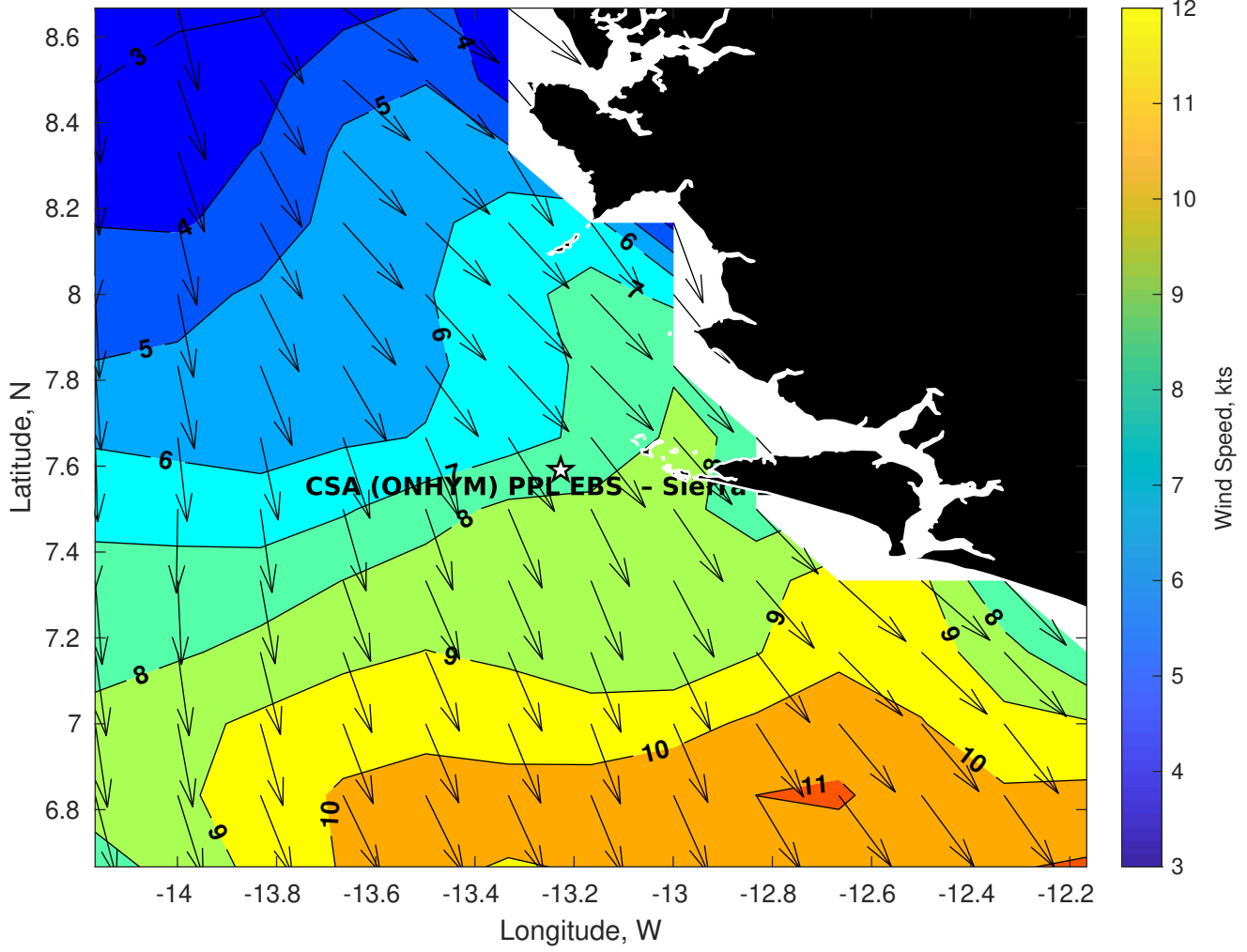
**Wave Height (ft) for CSA (ONHYM) PPL EBS - Sierra Leone at 29-Mar-2025 09:00:00**



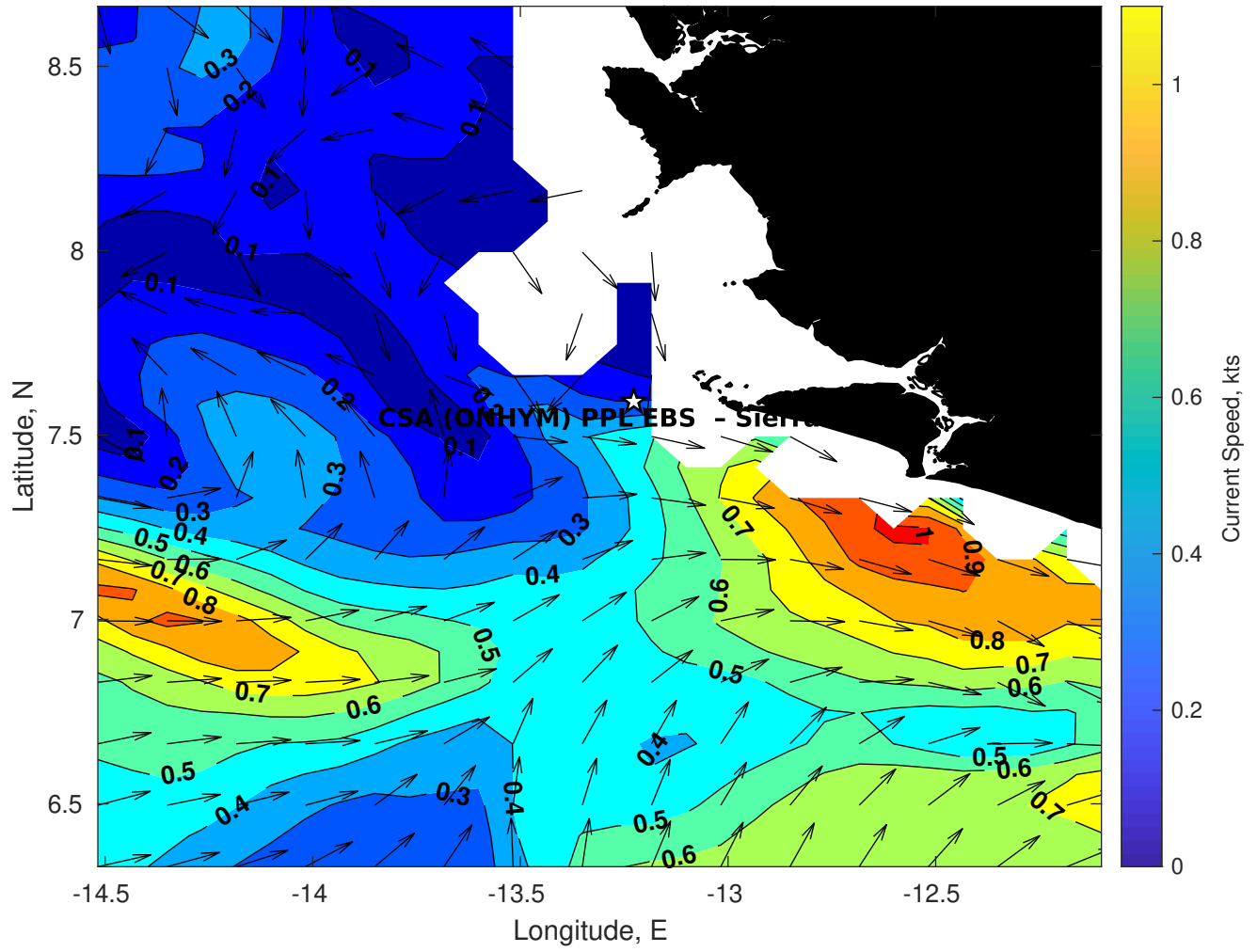
**Wave Period (sec) for CSA (ONHYM) PPL EBS - Sierra Leone at 29-Mar-2025 09:00:00**



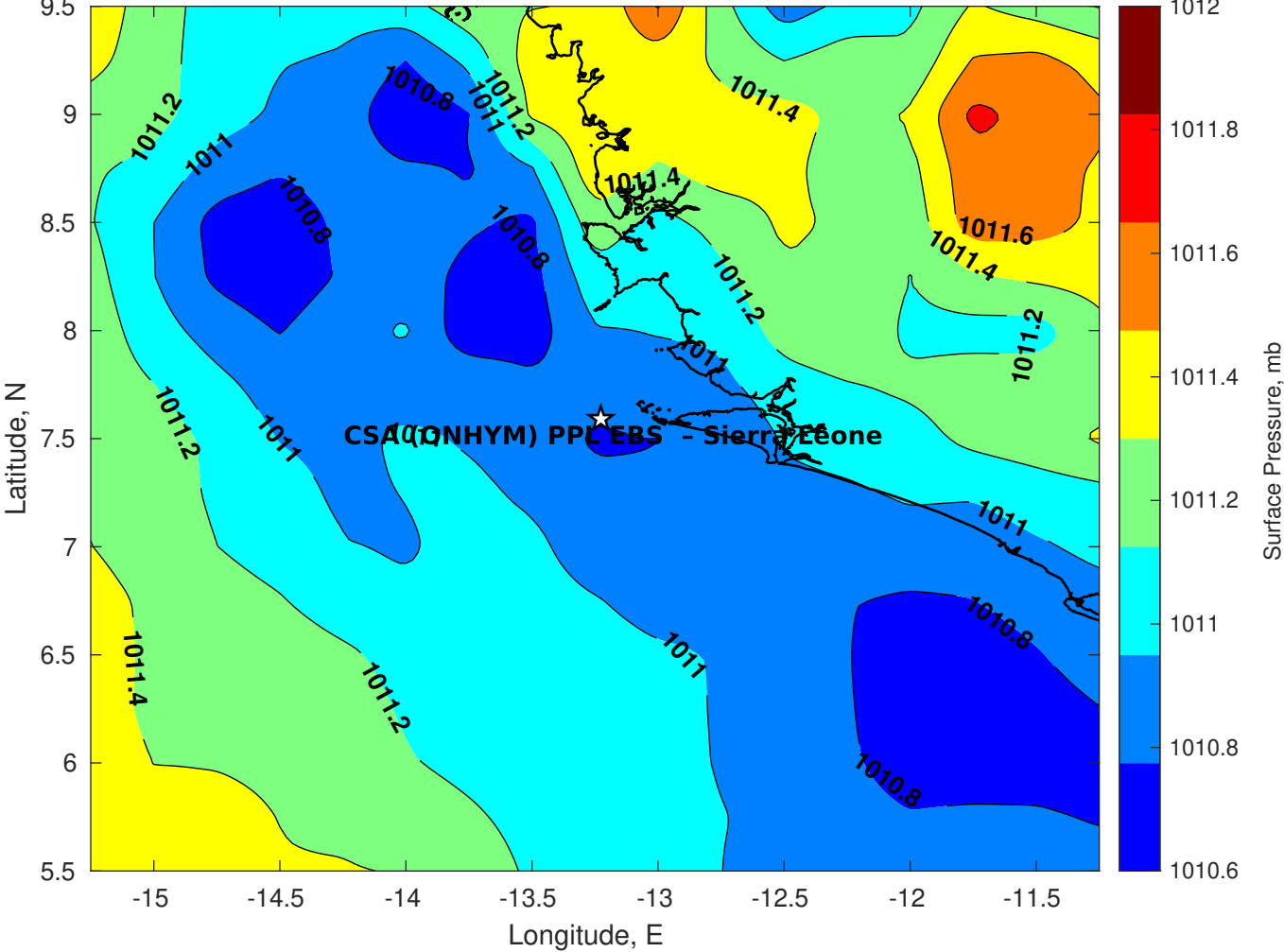
**Winds (kts) for CSA (ONHYM) PPL EBS - Sierra Leone at 29-Mar-2025 09:00:00**



### Surface Currents for CSA (ONHYM) PPL EBS - Sierra Leone at 28-Mar-2025 00:00:00

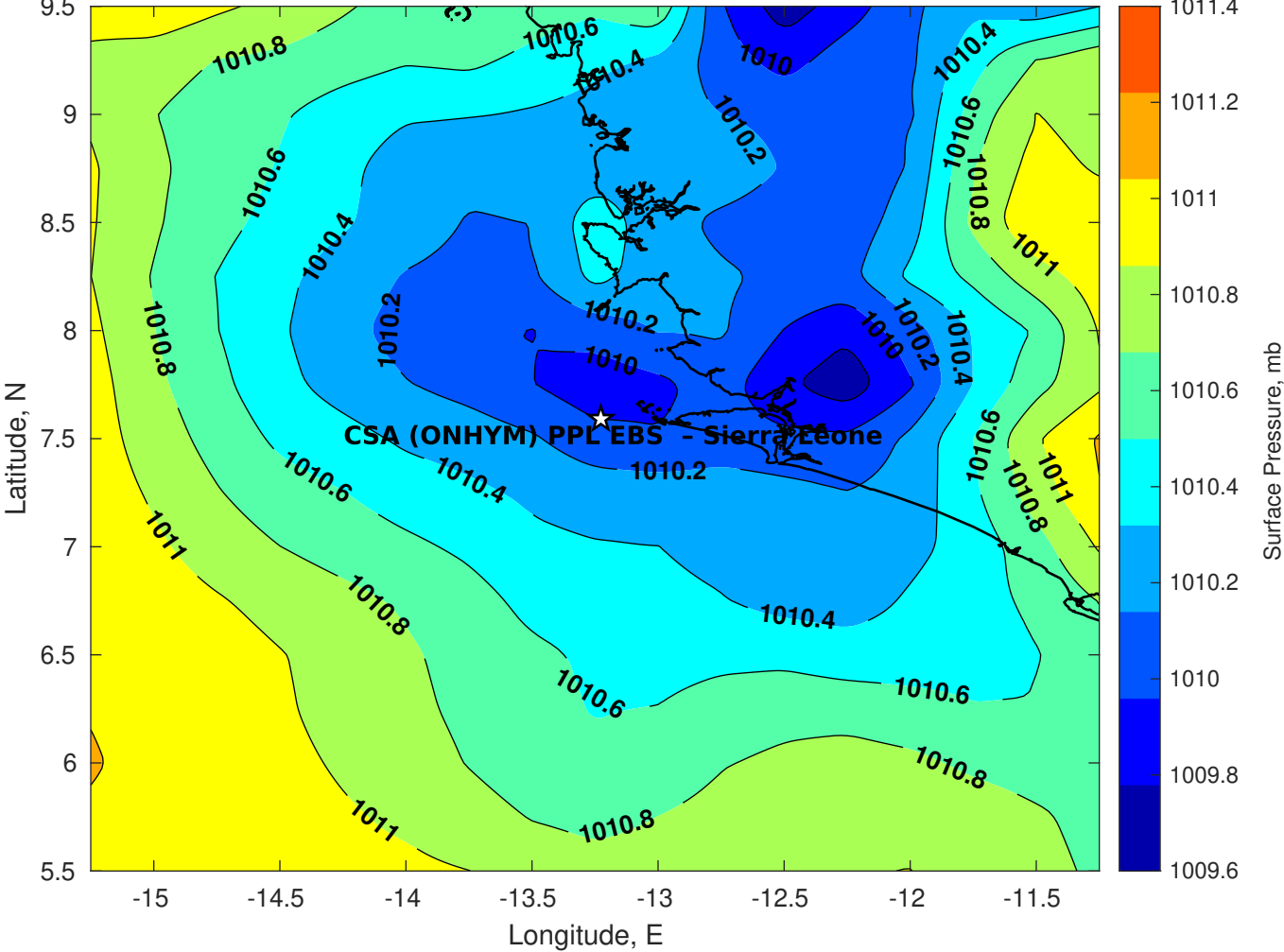


Surface Pressure (mb) for CSA (ONHYM) PPL EBS - Sierra Leone at 29-Mar-2025 00:00:00

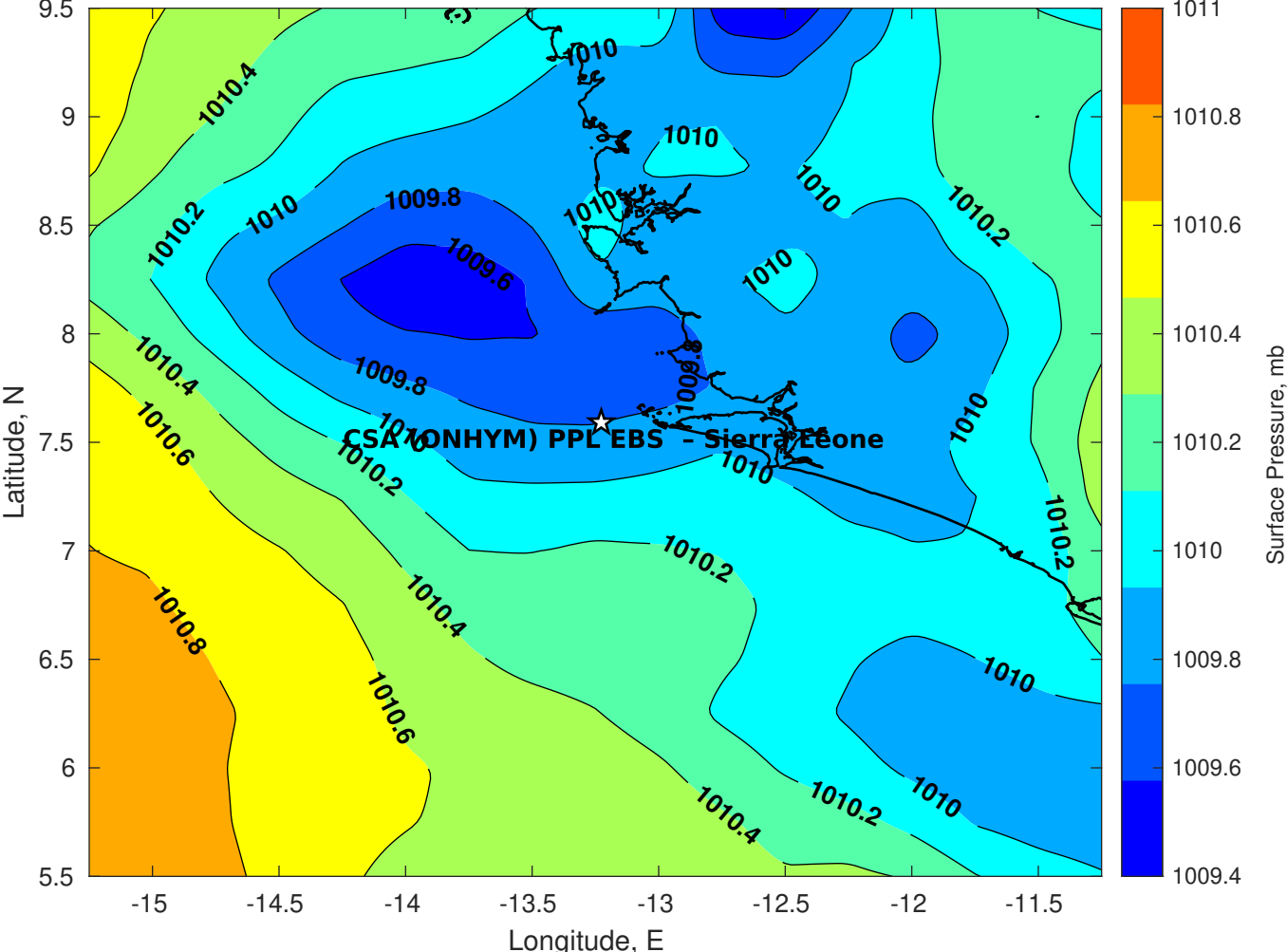




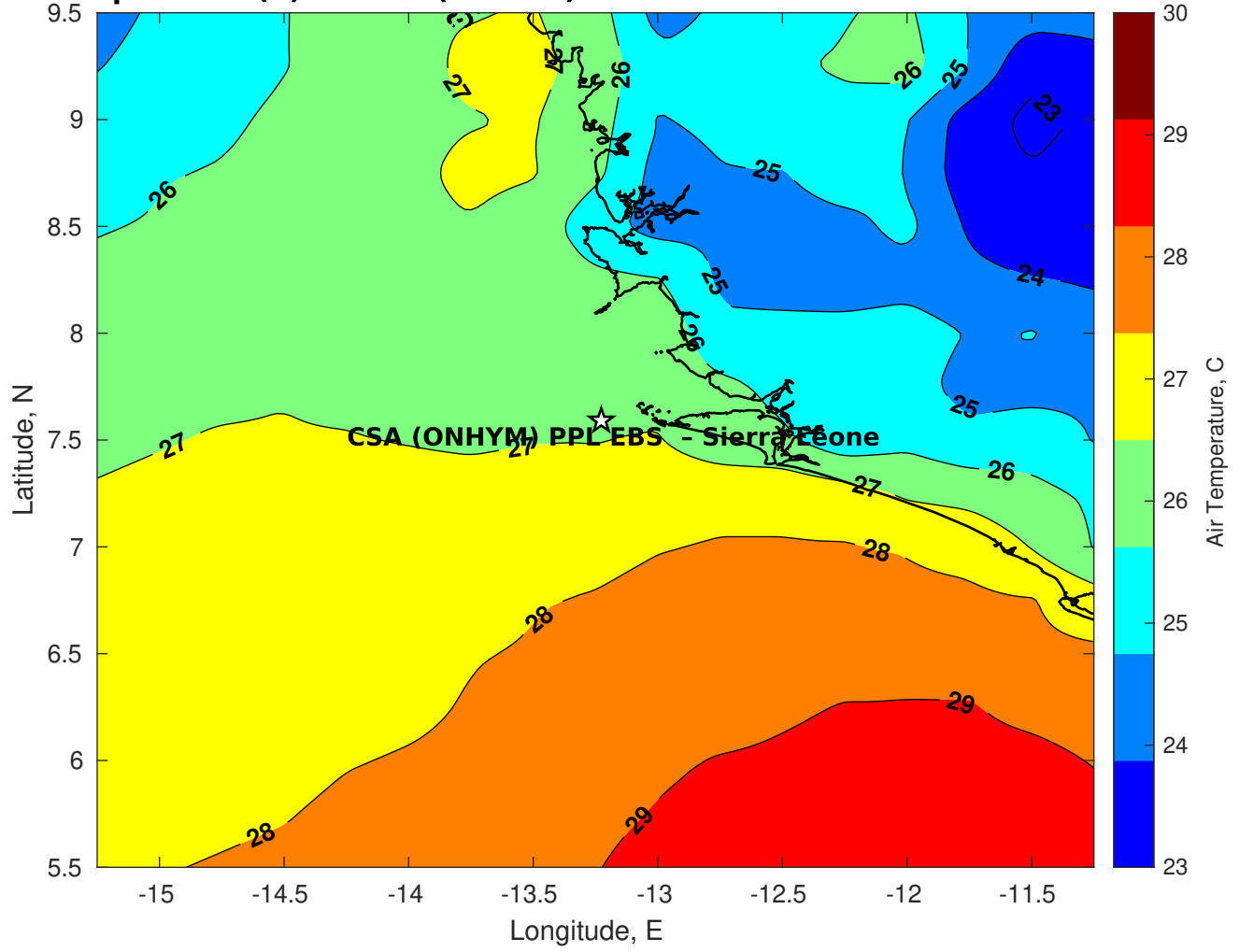
Surface Pressure (mb) for CSA (ONHYM) PPL EBS - Sierra Leone at 30-Mar-2025 00:00:00



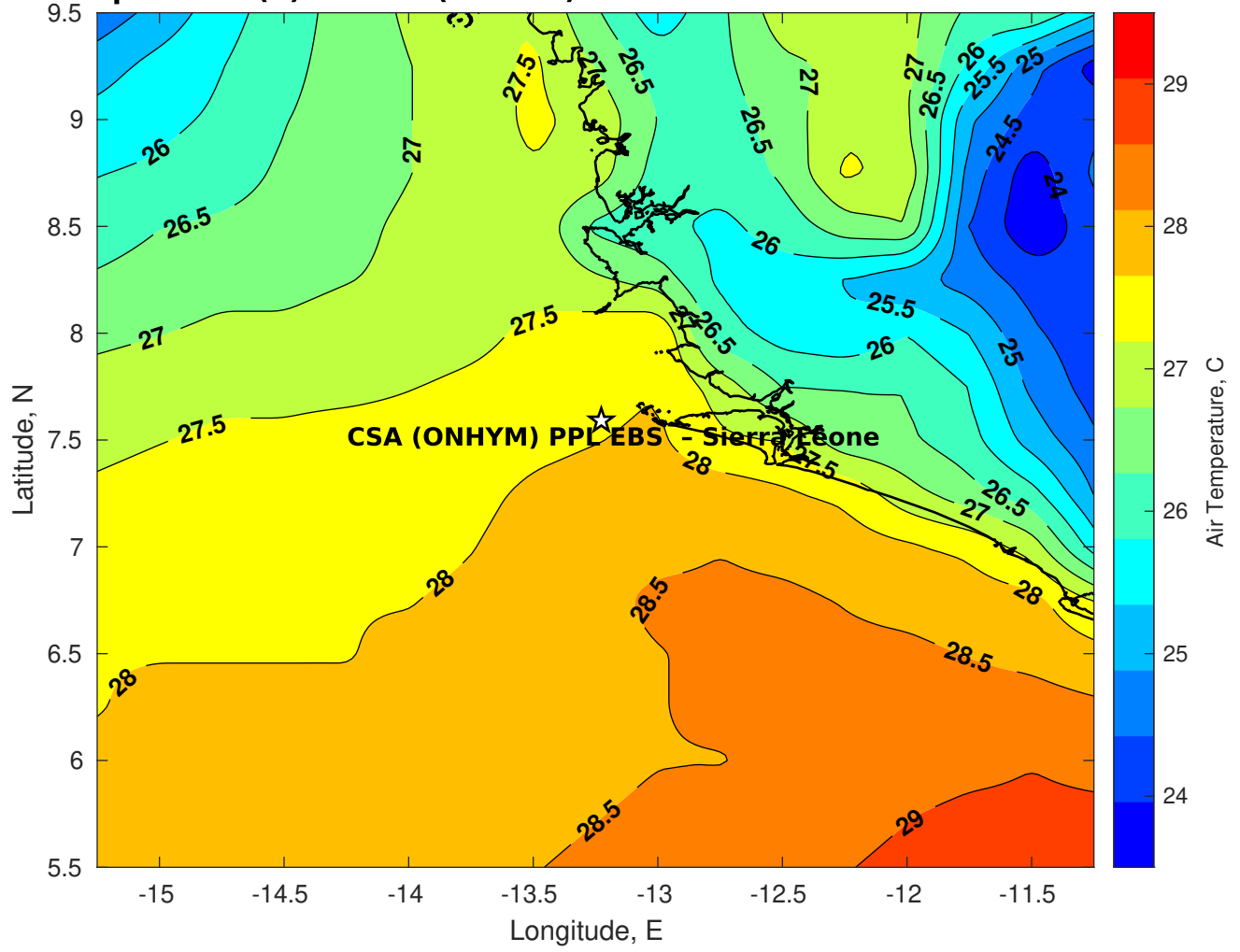
Surface Pressure (mb) for CSA (ONHYM) PPL EBS - Sierra Leone at 31-Mar-2025 00:00:00



**Air Temperature (C) for CSA (ONHYM) PPL EBS - Sierra Leone at 29-Mar-2025**



**Air Temperature (C) for CSA (ONHYM) PPL EBS - Sierra Leone at 29-Mar-2025**



**Air Temperature (C) for CSA (ONHYM) PPL EBS - Sierra Leone at 29-Mar-2025**

