

\*\*\*\*\*

Marine Weather Forecast for CSA (ONHYM) PPL EBS - Cote d'Ivoire  
Forecast valid as of 30-Mar-2025 0800 GMT

\*\*\*\*\*

All times are local.

Today

Winds: NW, 10-15 kts.  
Waves: N, 3-4 feet, 10-11 sec.  
No currents available.

Tonight

Winds: NW, 10-15 kts.  
Waves: N, 3-4 feet, 10-11 sec.  
No currents available.

Monday

Winds: NW, 10-15 kts.  
Waves: N, 3-4 feet, 18-19 sec.  
No currents available.

Monday Night

Winds: NW, 10-15 kts.  
Waves: N, 3-4 feet, 17-18 sec.  
No currents available.

Tuesday

Winds: NW, 10-15 kts.  
Waves: N, 4-5 feet, 17-18 sec.  
No currents available.

Tuesday Night

Winds: NW, 10-15 kts.  
Waves: N, 4-5 feet, 16-17 sec.  
No currents available.

Wednesday

Winds: NW, 10-15 kts.  
Waves: N, 5-6 feet, 15-16 sec.  
No currents available.

Wednesday Night

Winds: NW, 10-15 kts.  
Waves: N, 4-5 feet, 14-15 sec.  
No currents available.

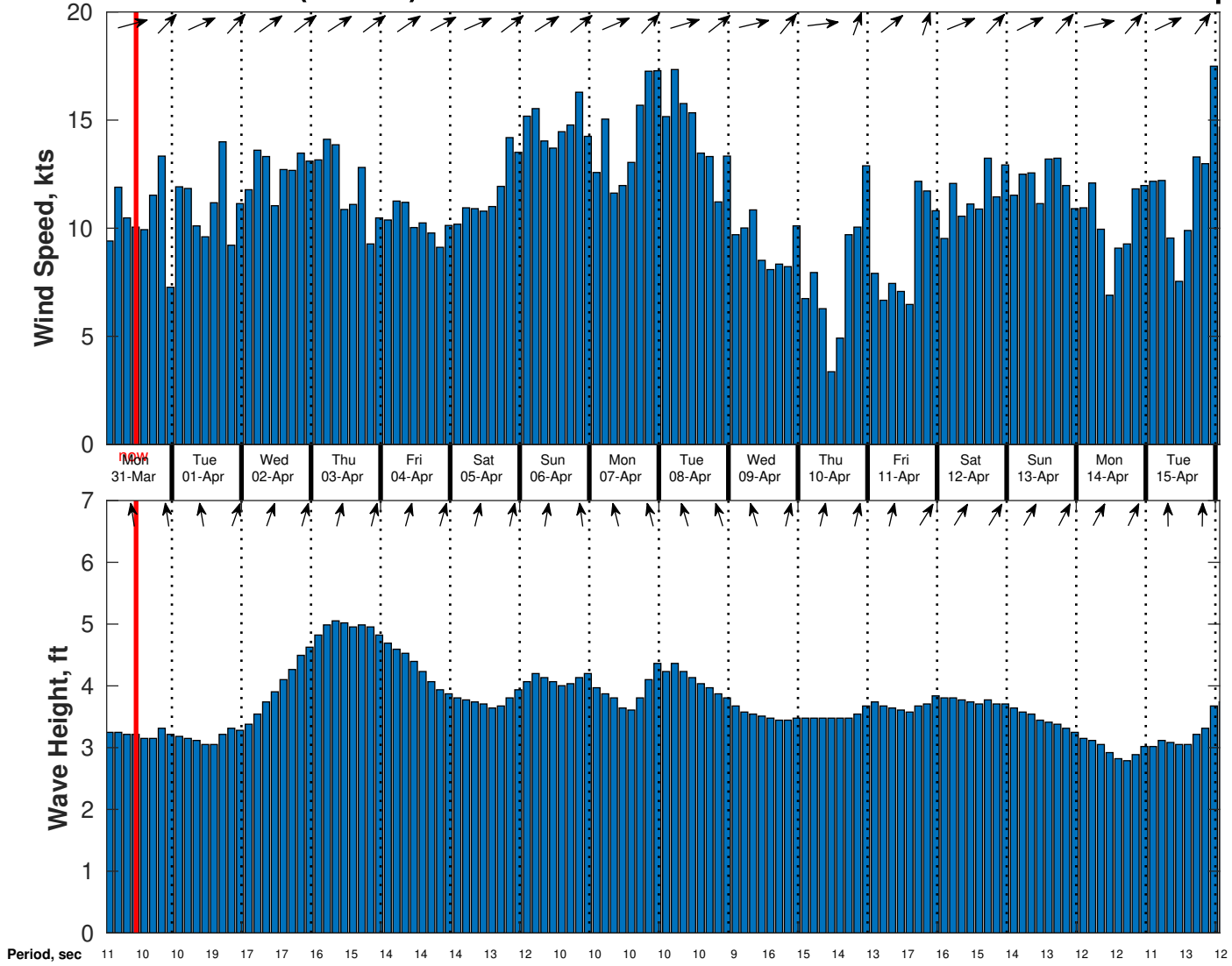
Thursday

Winds: N, 10-15 kts.  
Waves: N, 4-5 feet, 14-15 sec.  
No currents available.

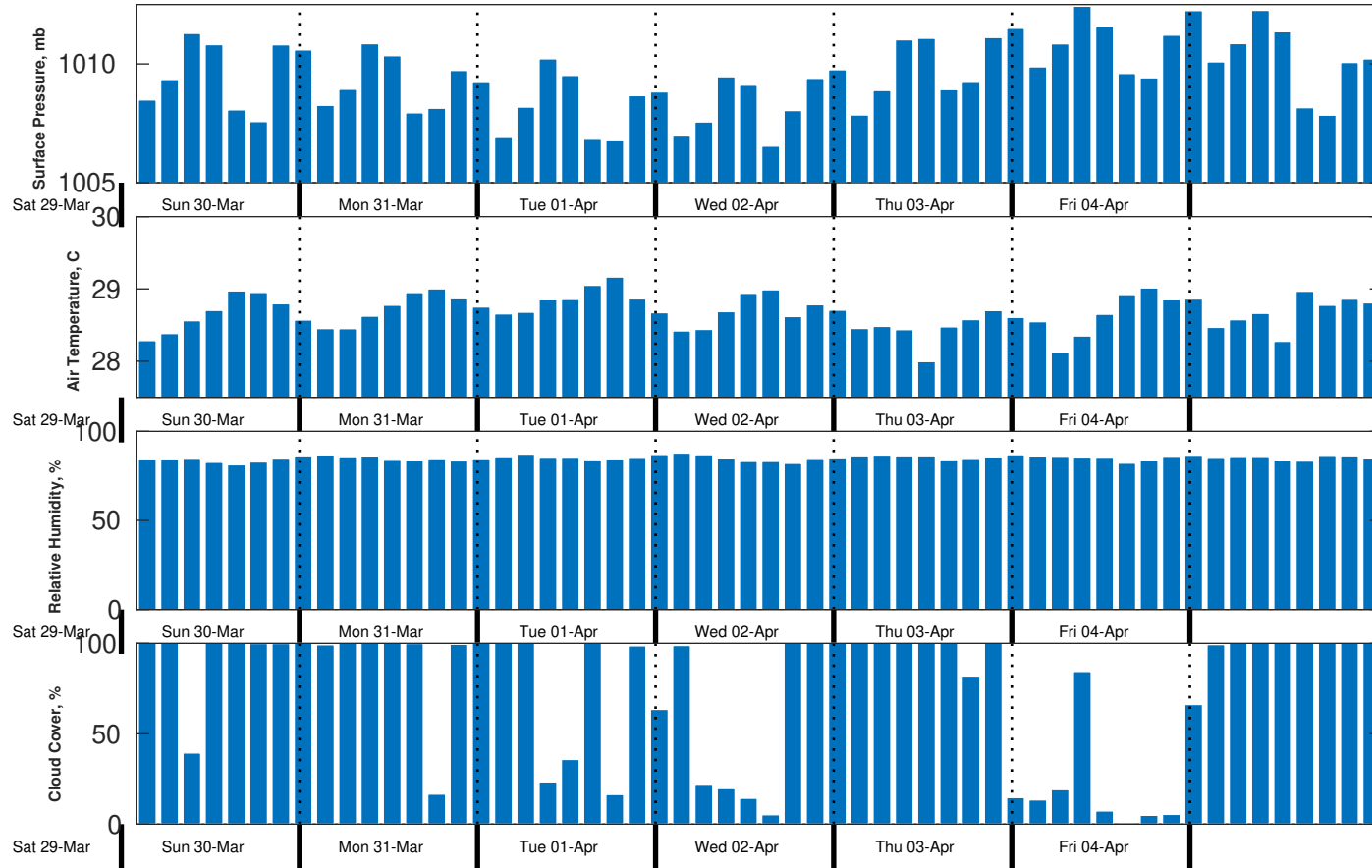
Thursday Night

Winds: NW, 10-15 kts.  
Waves: N, 3-4 feet, 13-14 sec.  
No currents available.

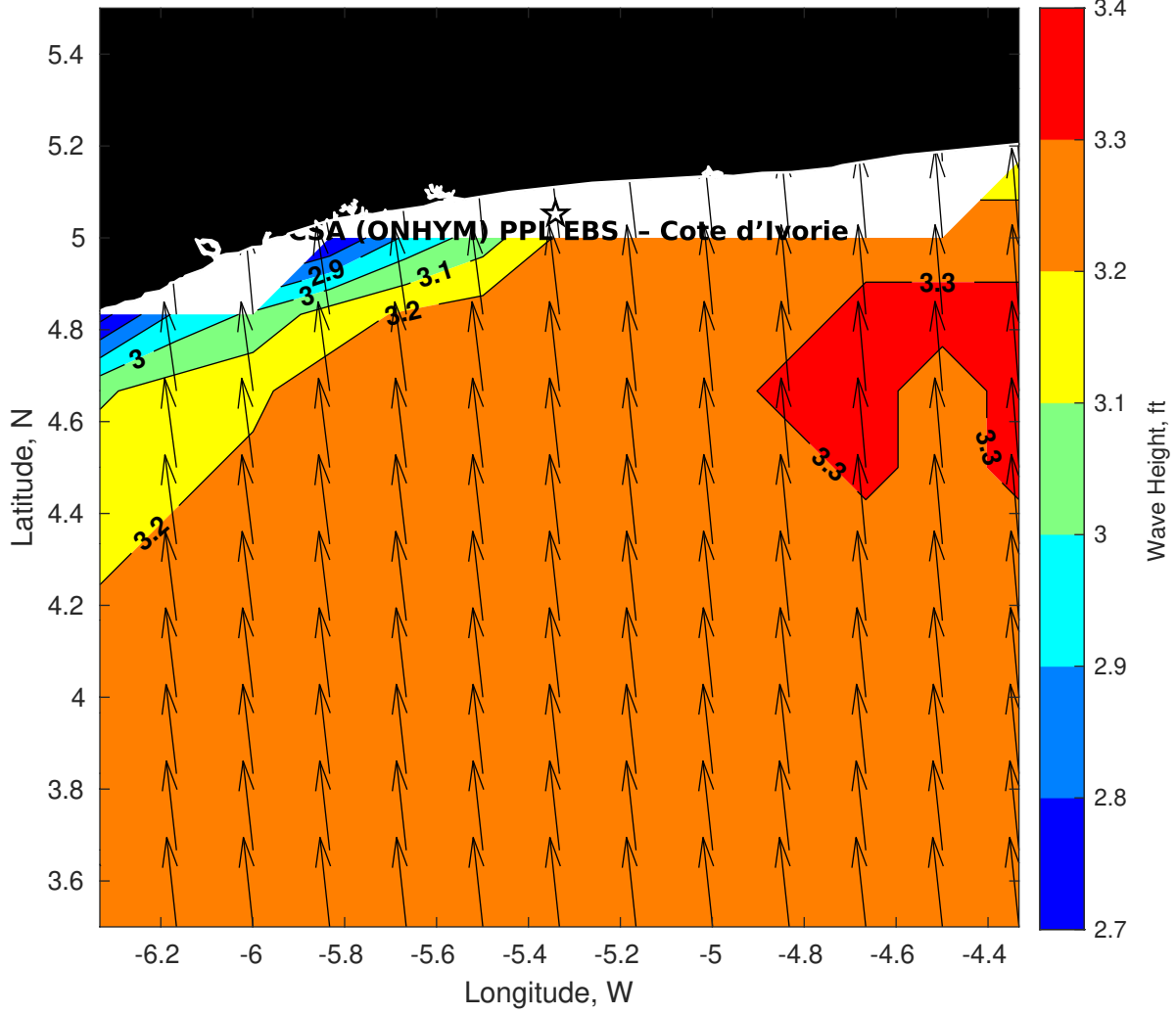
**Wind & Wave Forecast for CSA (ONHYM) PPL EBS - Cote d'Ivoire from 30-Mar-2025 01:00:00 to 15-Apr-2025 01:00:00**



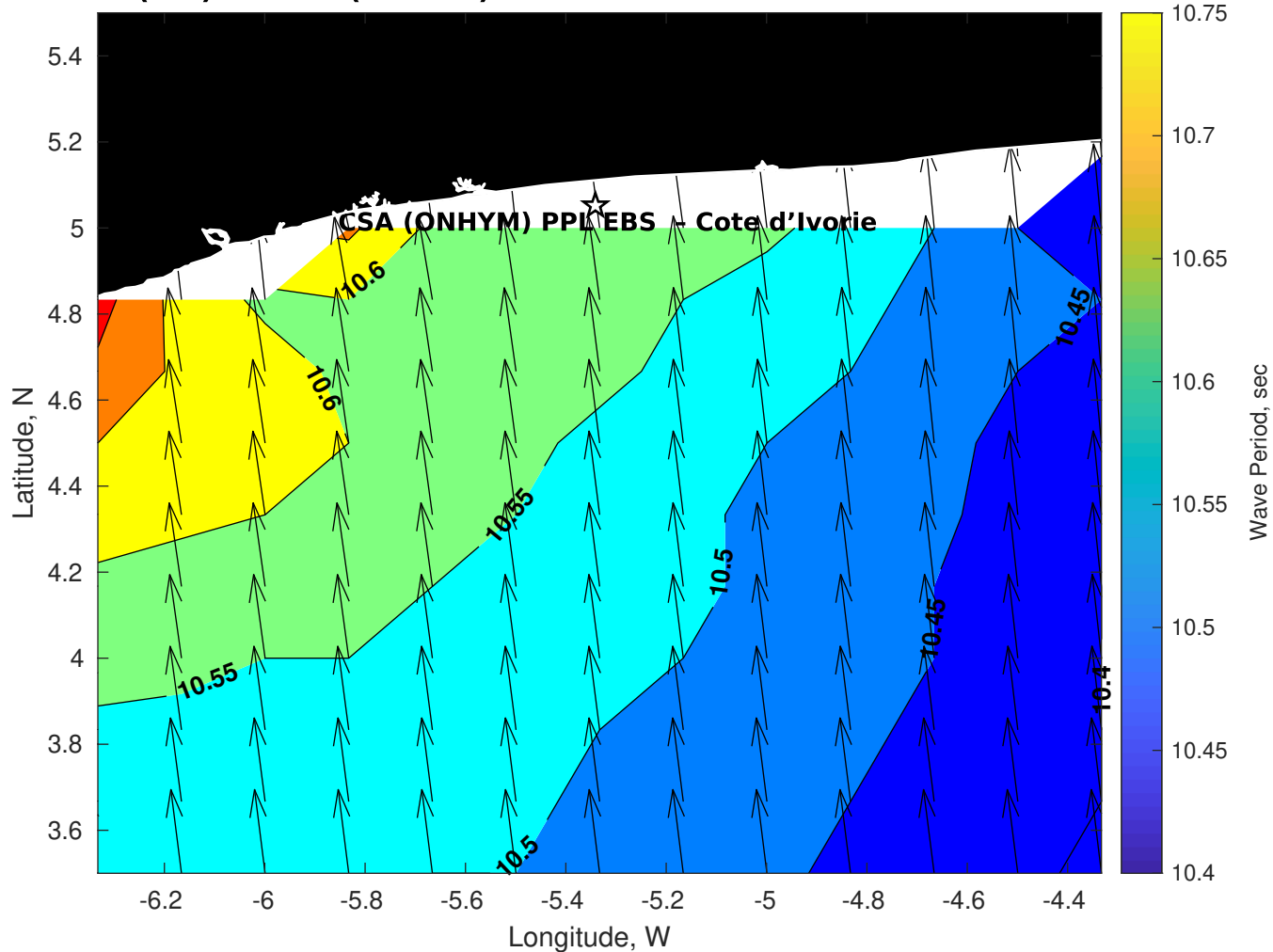
### Met Forecast for CSA (ONHYM) PPL EBS - Cote d'Ivoire from 30-Mar-2025 00:00:00 to 06-Apr-2025 00:00:00



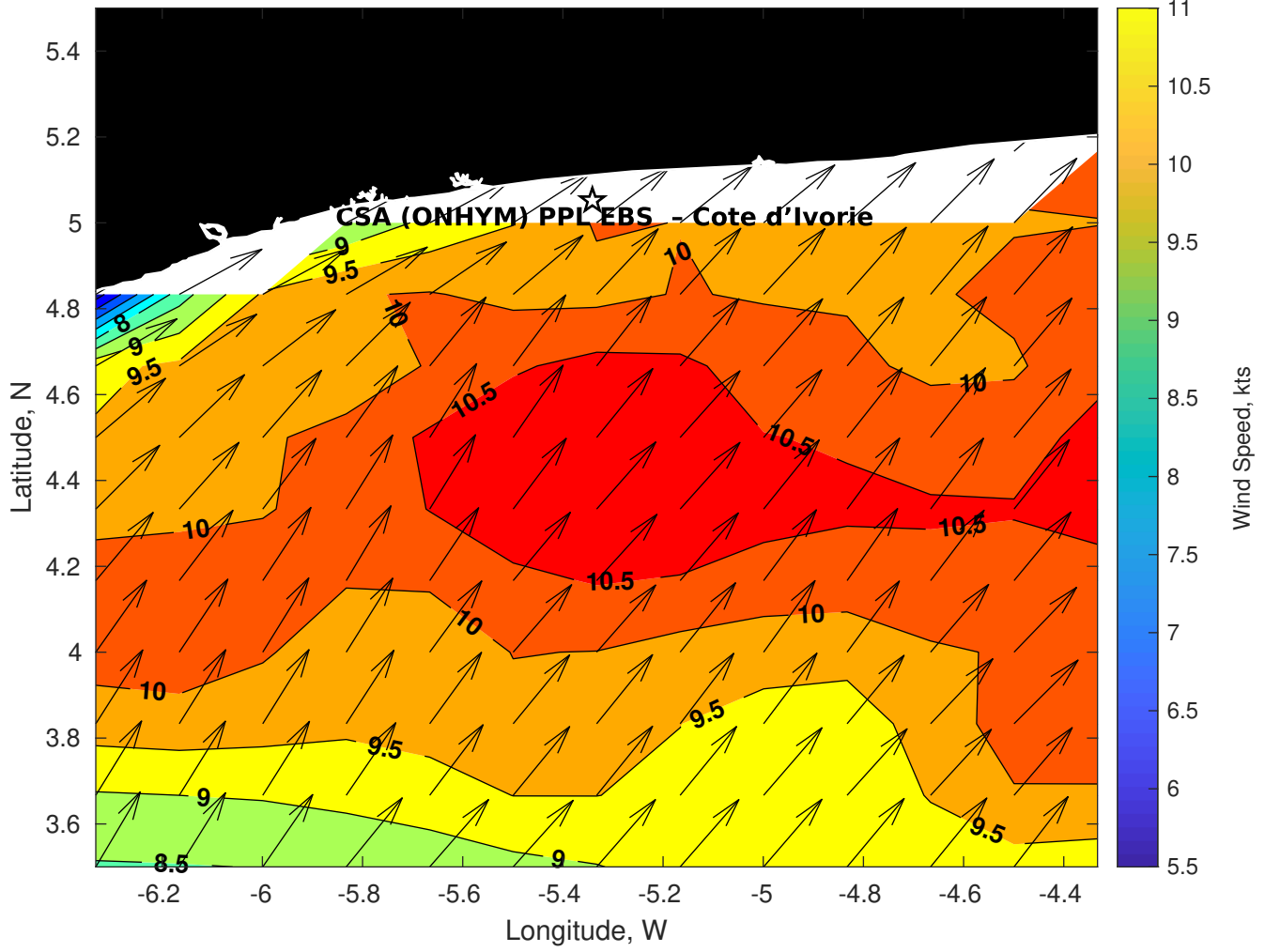
**Wave Height (ft) for CSA (ONHYM) PPL EBS - Cote d'Ivoire at 30-Mar-2025 09:00:00**



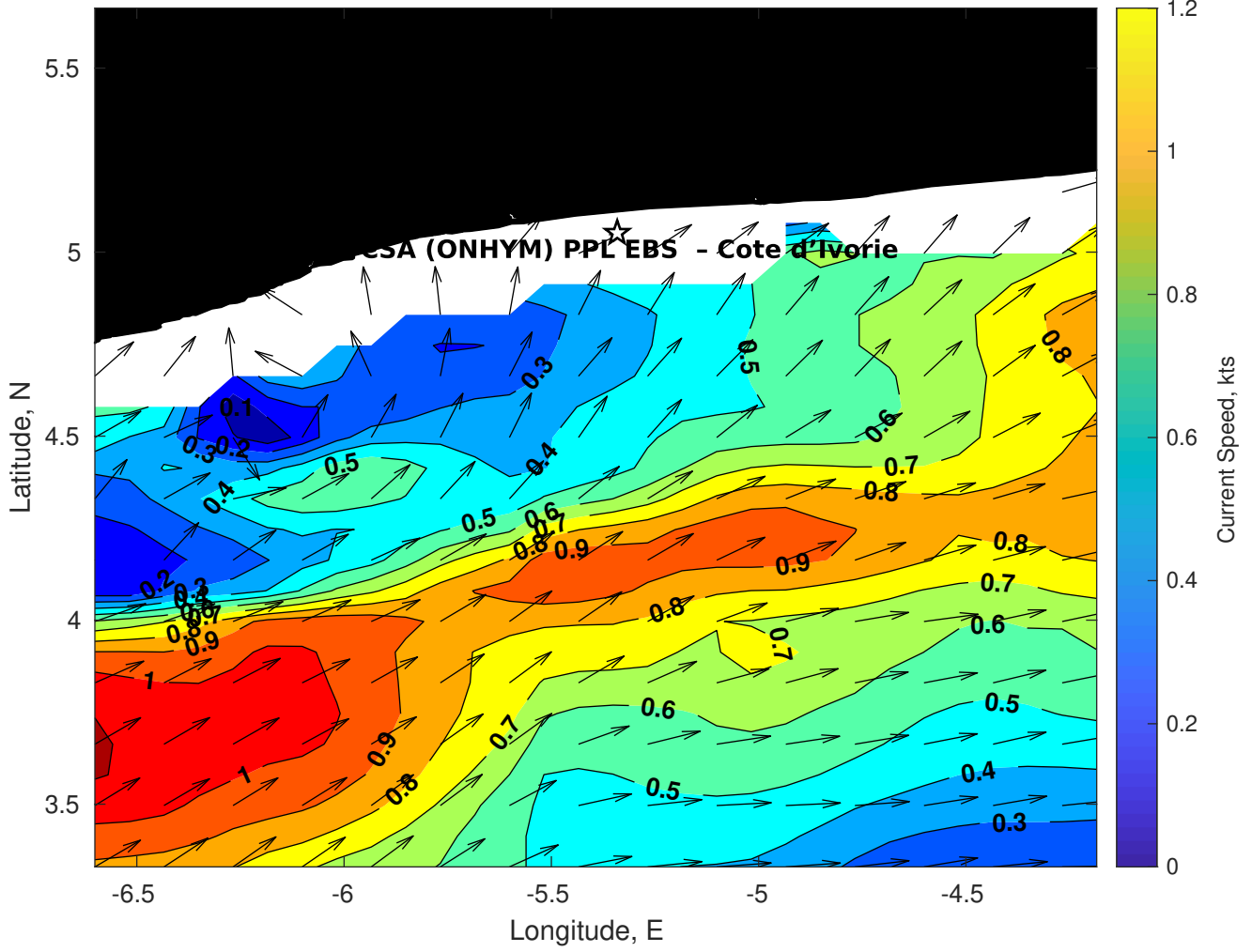
**Wave Period (sec) for CSA (ONHYM) PPL EBS - Cote d'Ivoire at 30-Mar-2025 09:00:00**



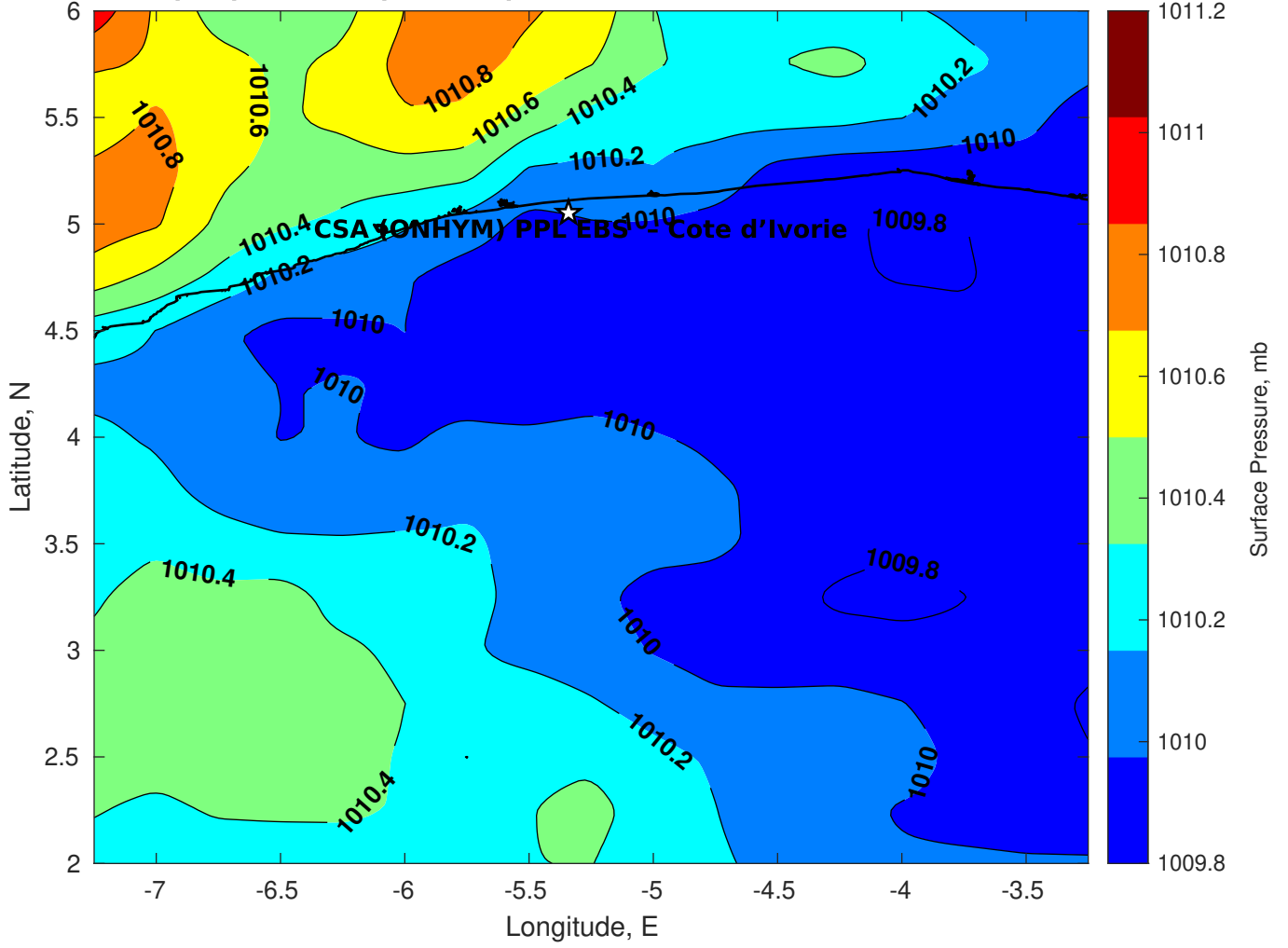
**Winds (kts) for CSA (ONHYM) PPL EBS - Cote d'Ivoire at 30-Mar-2025 09:00:00**



Surface Currents for CSA (ONHYM) PPL EBS - Cote d'Ivoire at 29-Mar-2025 00:00:00

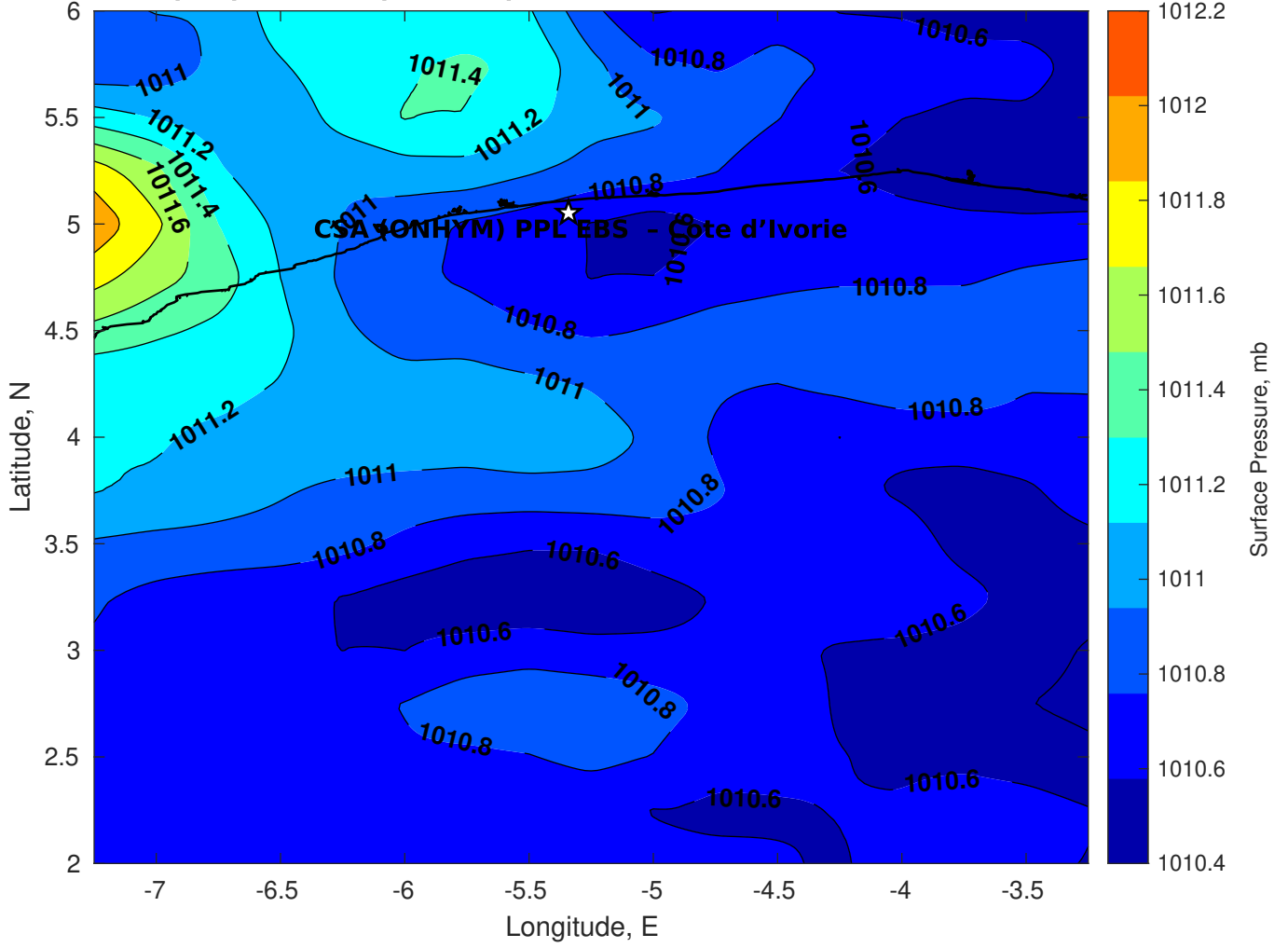


Surface Pressure (mb) for CSA (ONHYM) PPL EBS - Cote d'Ivoire at 30-Mar-2025 00:00:00

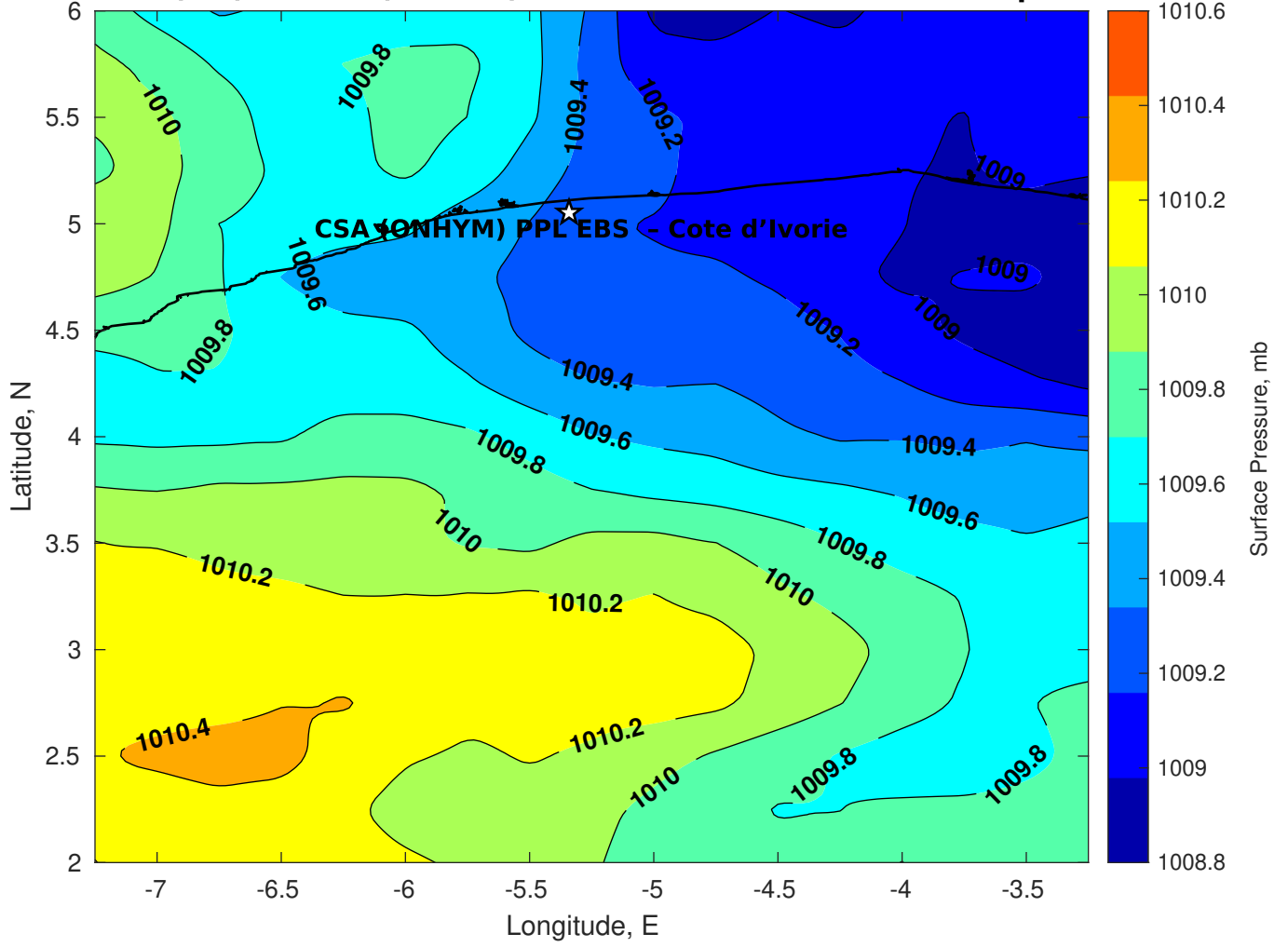




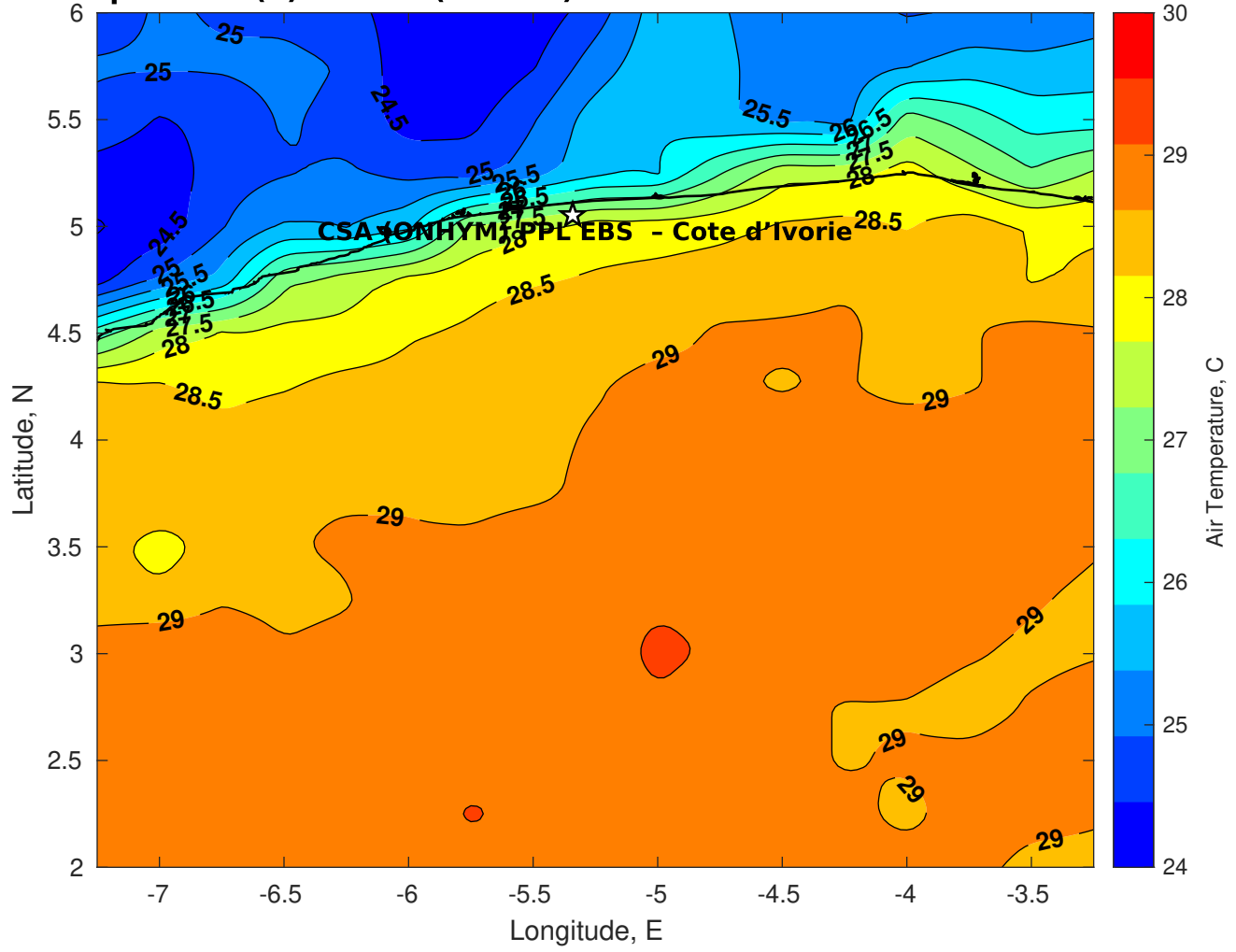
**Surface Pressure (mb) for CSA (ONHYM) PPL EBS - Cote d'Ivoire at 31-Mar-2025 00:00:00**



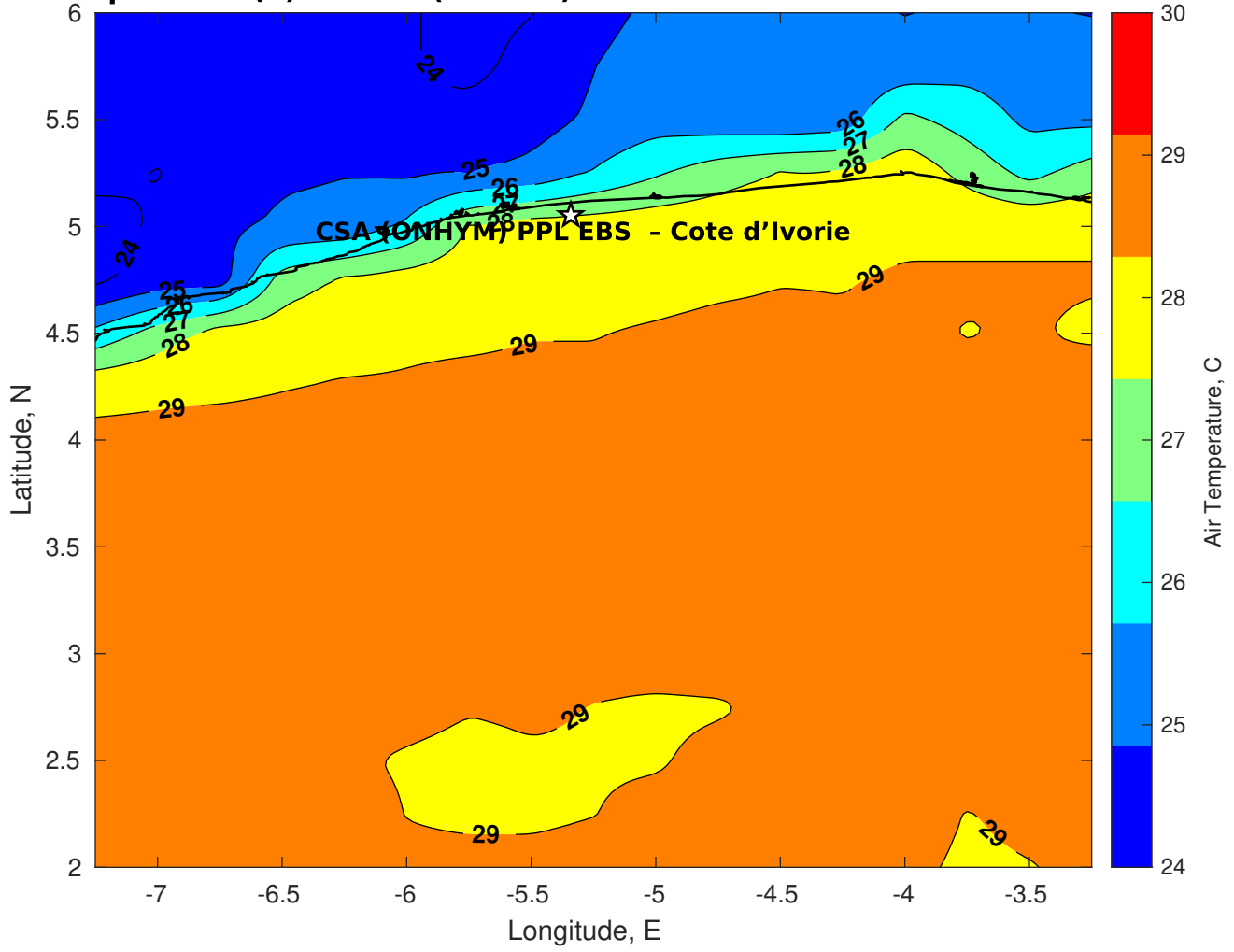
Surface Pressure (mb) for CSA (ONHYM) PPL EBS - Cote d'Ivoire at 01-Apr-2025 00:00:00



**Air Temperature (C) for CSA (ONHYM) PPL EBS - Cote d'Ivoire at 30-Mar-2025**



**Air Temperature (C) for CSA (ONHYM) PPL EBS - Cote d'Ivoire at 30-Mar-2025**



**Air Temperature (C) for CSA (ONHYM) PPL EBS - Cote d'Ivoire at 30-Mar-2025**

