

\*\*\*\*\*

Marine Weather Forecast for CSA (ONHYM) PPL EBS - Ghana

Forecast valid as of 30-Mar-2025 0800 GMT

\*\*\*\*\*

All times are local.

Today

Winds: NW, 10-15 kts.

Waves: N, 3-4 feet, 10-11 sec.

No currents available.

Tonight

Winds: NW, 10-15 kts.

Waves: N, 3-4 feet, 10-11 sec.

No currents available.

Monday

Winds: NW, 10-15 kts.

Waves: N, 3-4 feet, 18-19 sec.

No currents available.

Monday Night

Winds: NW, 15-20 kts.

Waves: NW, 3-4 feet, 17-18 sec.

No currents available.

Tuesday

Winds: NW, 10-15 kts.

Waves: N, 4-5 feet, 17-18 sec.

No currents available.

Tuesday Night

Winds: NW, 10-15 kts.

Waves: N, 5-6 feet, 16-17 sec.

No currents available.

Wednesday

Winds: NW, 10-15 kts.

Waves: N, 5-6 feet, 15-16 sec.

No currents available.

Wednesday Night

Winds: NW, 5-10 kts.

Waves: N, 5-6 feet, 14-15 sec.

No currents available.

Thursday

Winds: NW, 5-10 kts.

Waves: N, 4-5 feet, 14-15 sec.

No currents available.

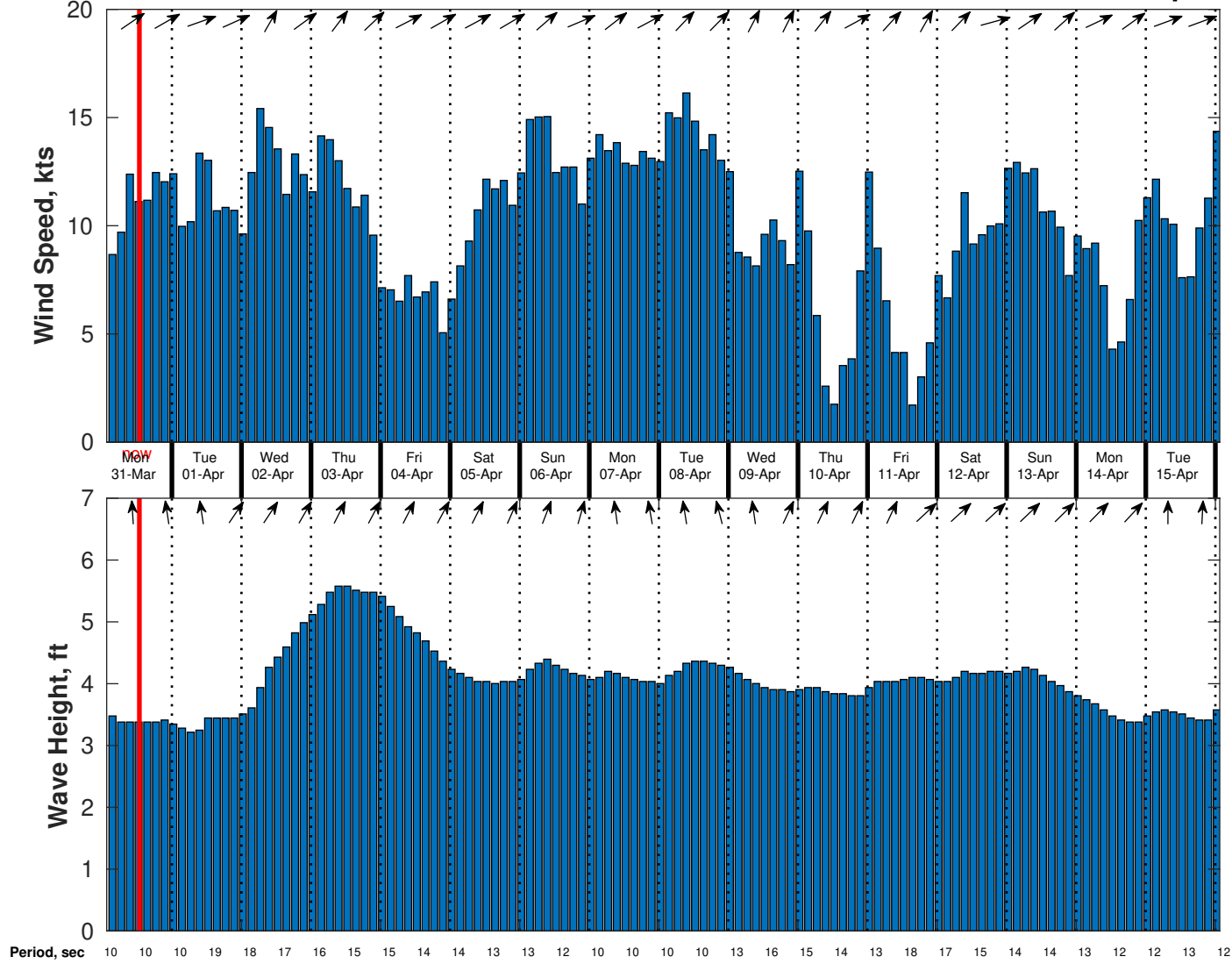
Thursday Night

Winds: NW, 5-10 kts.

Waves: N, 4-5 feet, 14-15 sec.

No currents available.

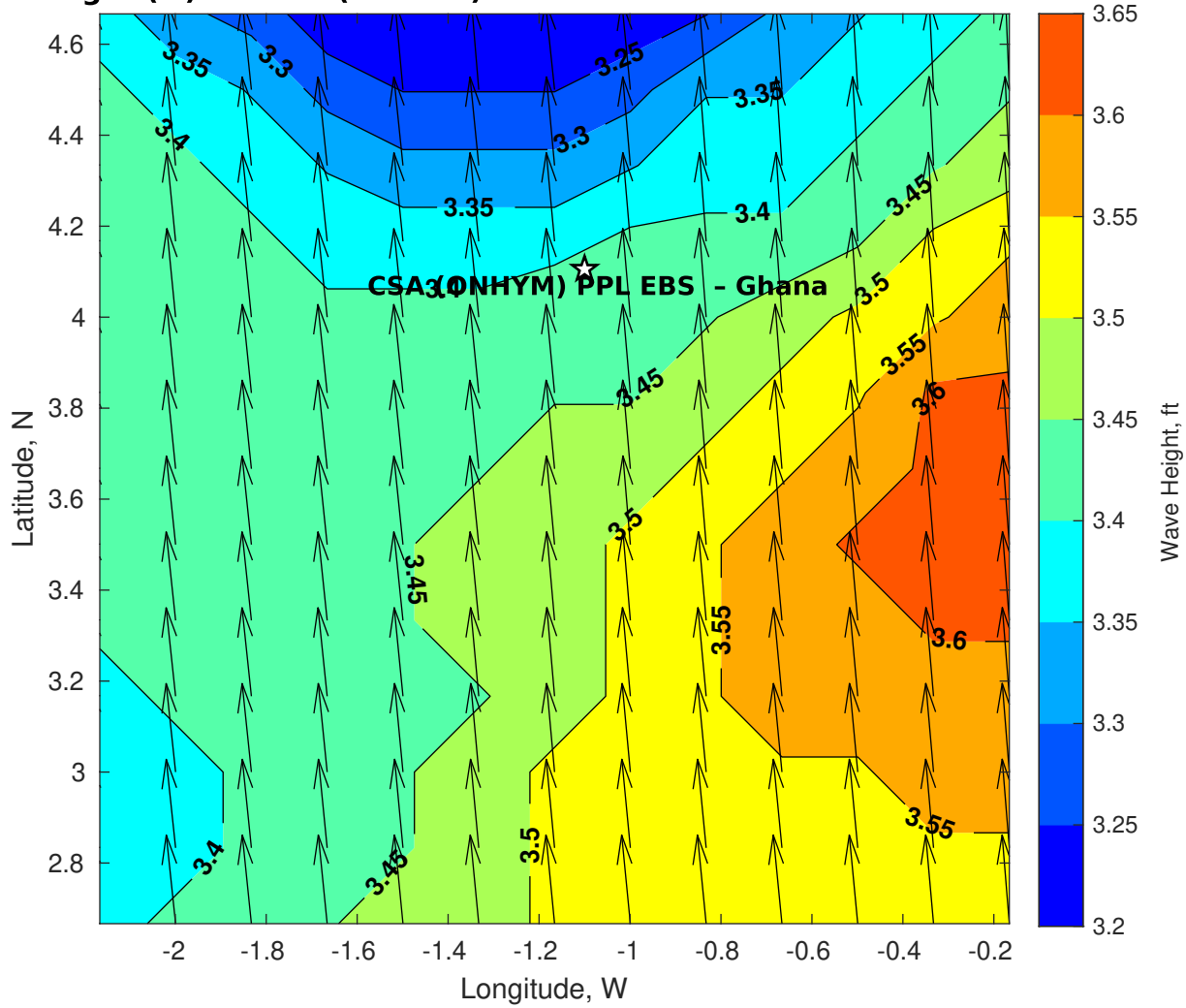
### Wind & Wave Forecast for CSA (ONHYM) PPL EBS - Ghana from 30-Mar-2025 02:00:00 to 15-Apr-2025 02:00:00



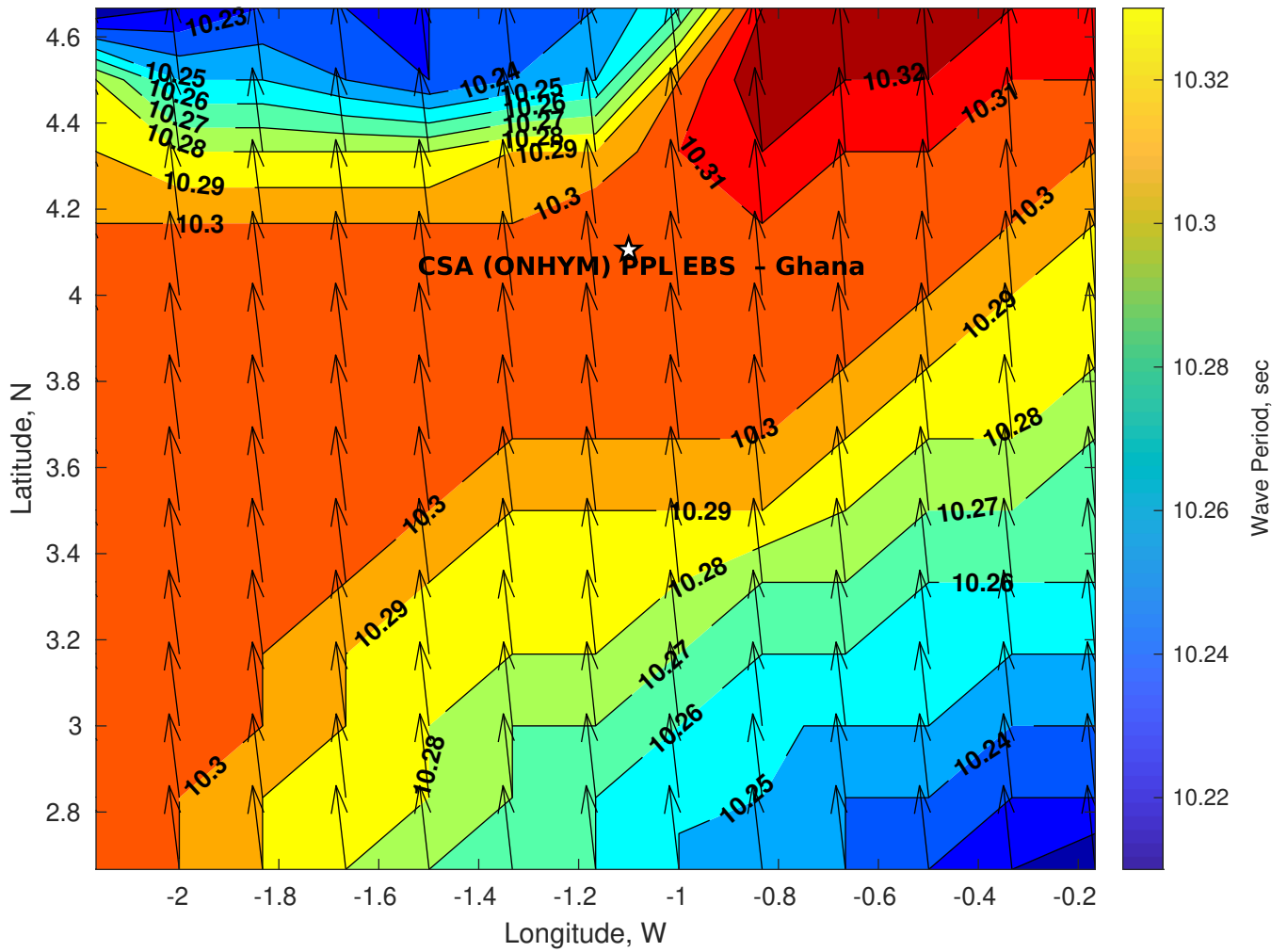
**Met Forecast for CSA (ONHYM) PPL EBS - Ghana for 30-Mar-2025 0800 GMT**

**No Atmospheric Data**

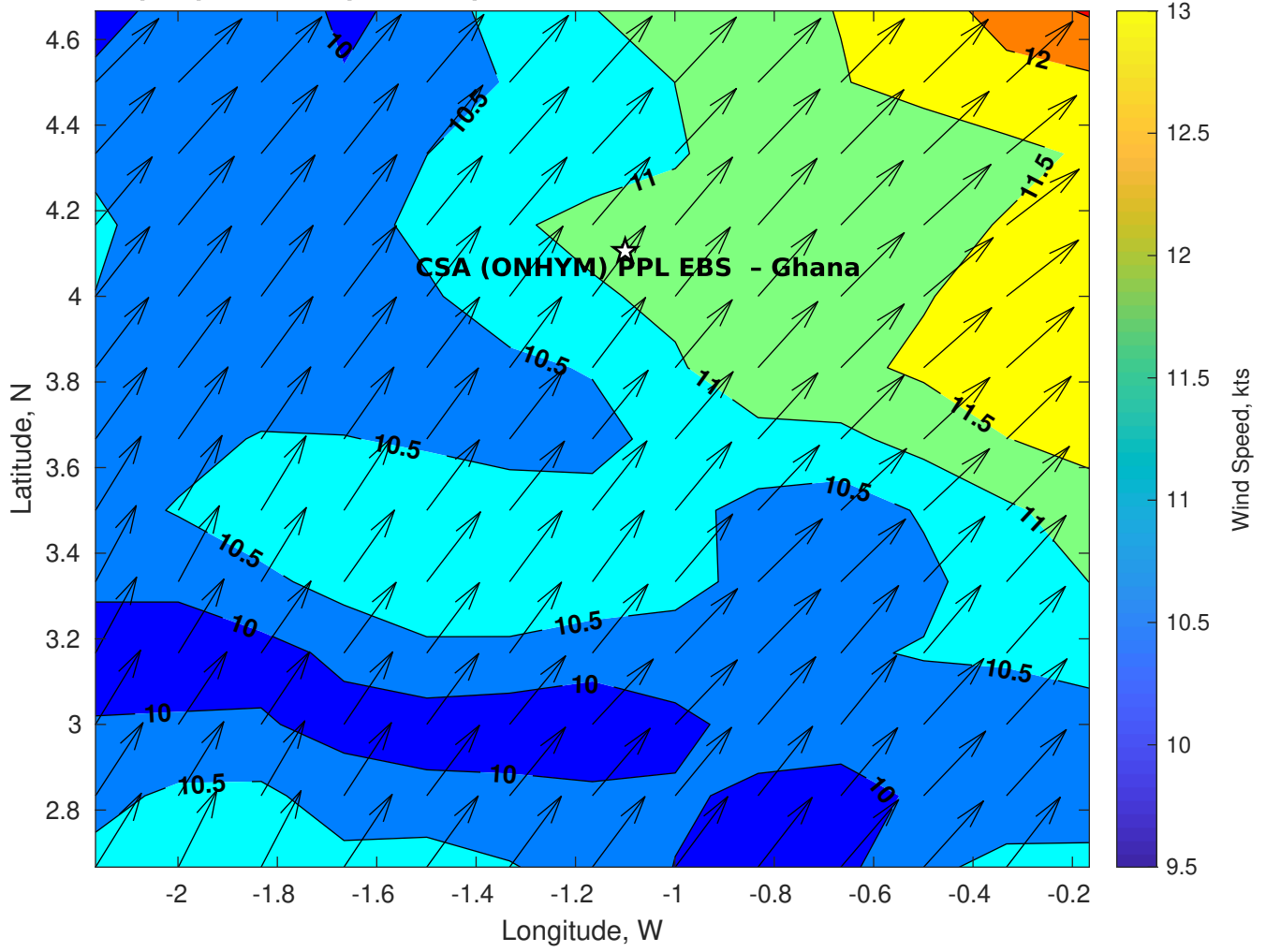
### Wave Height (ft) for CSA (ONHYM) PPL EBS - Ghana at 30-Mar-2025 09:00:00



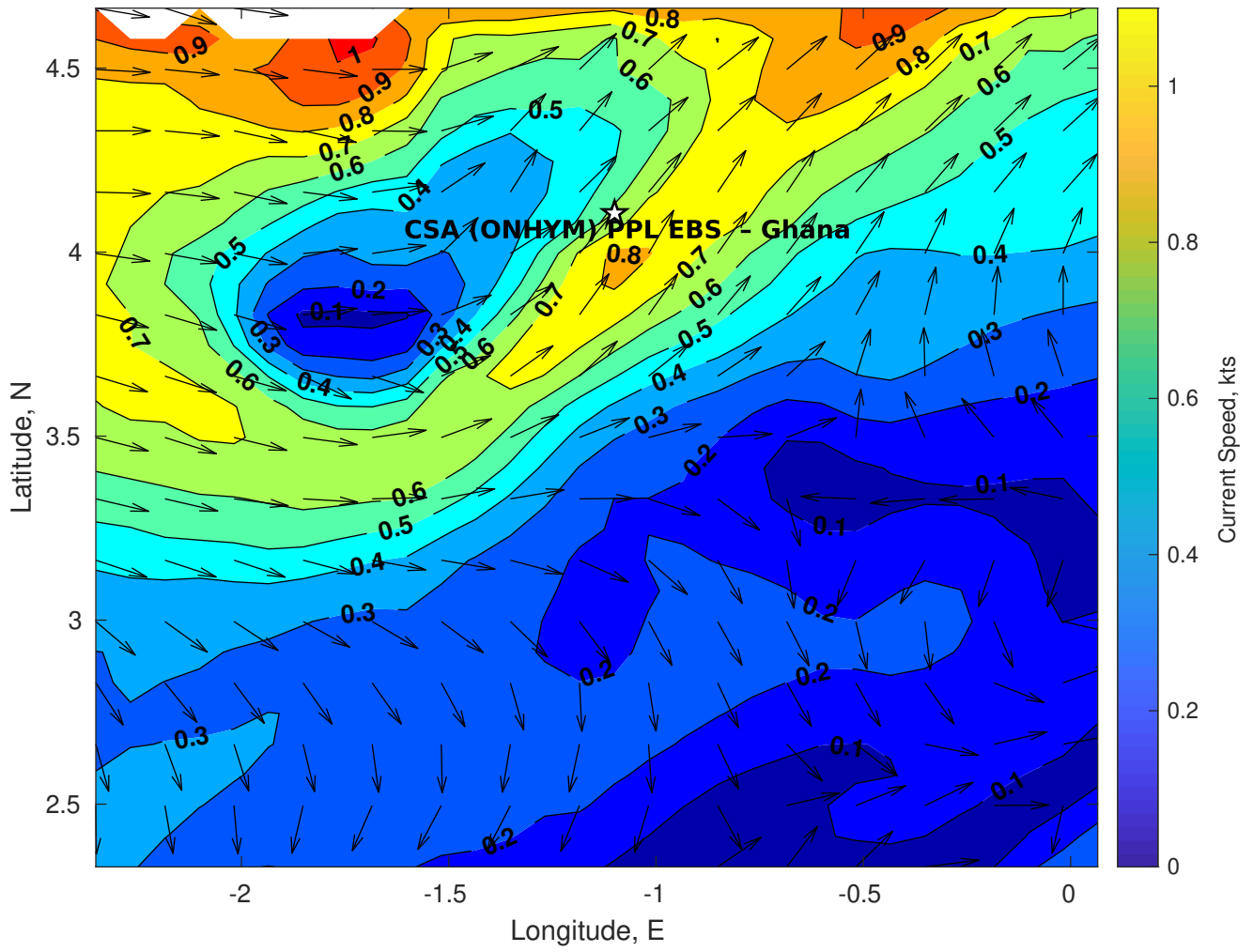
**Wave Period (sec) for CSA (ONHYM) PPL EBS - Ghana at 30-Mar-2025 09:00:00**



**Winds (kts) for CSA (ONHYM) PPL EBS - Ghana at 30-Mar-2025 09:00:00**



**Surface Currents for CSA (ONHYM) PPL EBS - Ghana at 29-Mar-2025 00:00:00**





**No Surface Pressure Data**