

\*\*\*\*\*

Marine Weather Forecast for CTI Enbridge Kaskida & Tiber PPL Geotechnical  
Forecast valid as of 30-Mar-2025 0800 GMT

\*\*\*\*\*

All times are local.

Today

Winds: NE, 10-15 kts.  
Waves: E, 5-6 feet, 8-9 sec.  
No currents available.

Tonight

Winds: N, 10-15 kts.  
Waves: E, 4-5 feet, 7-8 sec.  
No currents available.

Monday

Winds: N, 5-10 kts.  
Waves: E, 4-5 feet, 7-8 sec.  
No currents available.

Monday Night

Winds: NE, 5-10 kts.  
Waves: NE, 3-4 feet, 6-7 sec.  
No currents available.

Tuesday

Winds: NE, 15-20 kts.  
Waves: NE, 3-4 feet, 6-7 sec.  
No currents available.

Tuesday Night

Winds: NE, 20-25 kts.  
Waves: NE, 6-7 feet, 6-7 sec.  
No currents available.

Wednesday

Winds: NE, 25-30 kts.  
Waves: NE, 10-11 feet, 8-9 sec.  
No currents available.

Wednesday Night

Winds: NE, 25-30 kts.  
Waves: NE, 10-11 feet, 8-9 sec.  
No currents available.

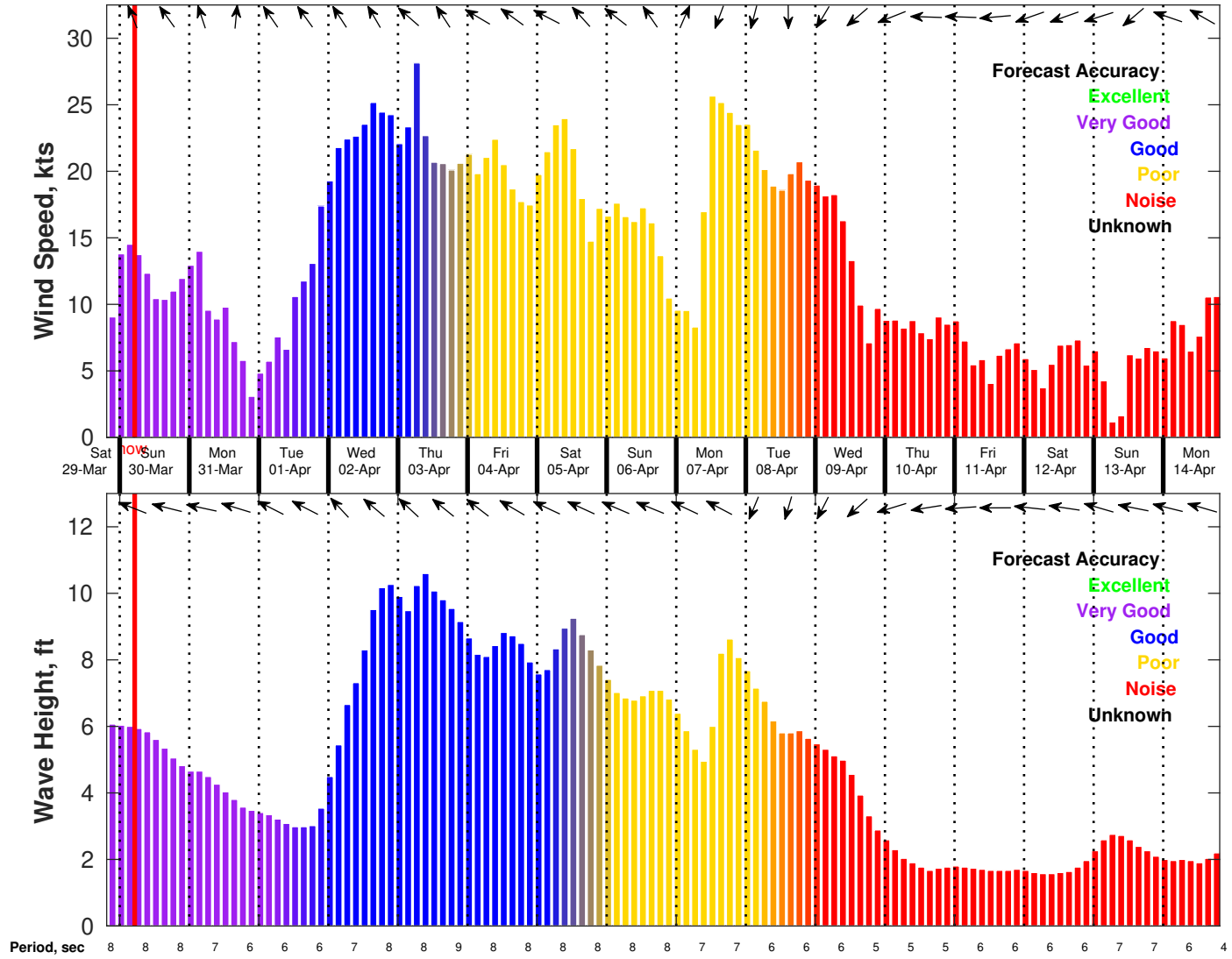
Thursday

Winds: NE, 20-25 kts.  
Waves: NE, 10-11 feet, 8-9 sec.  
No currents available.

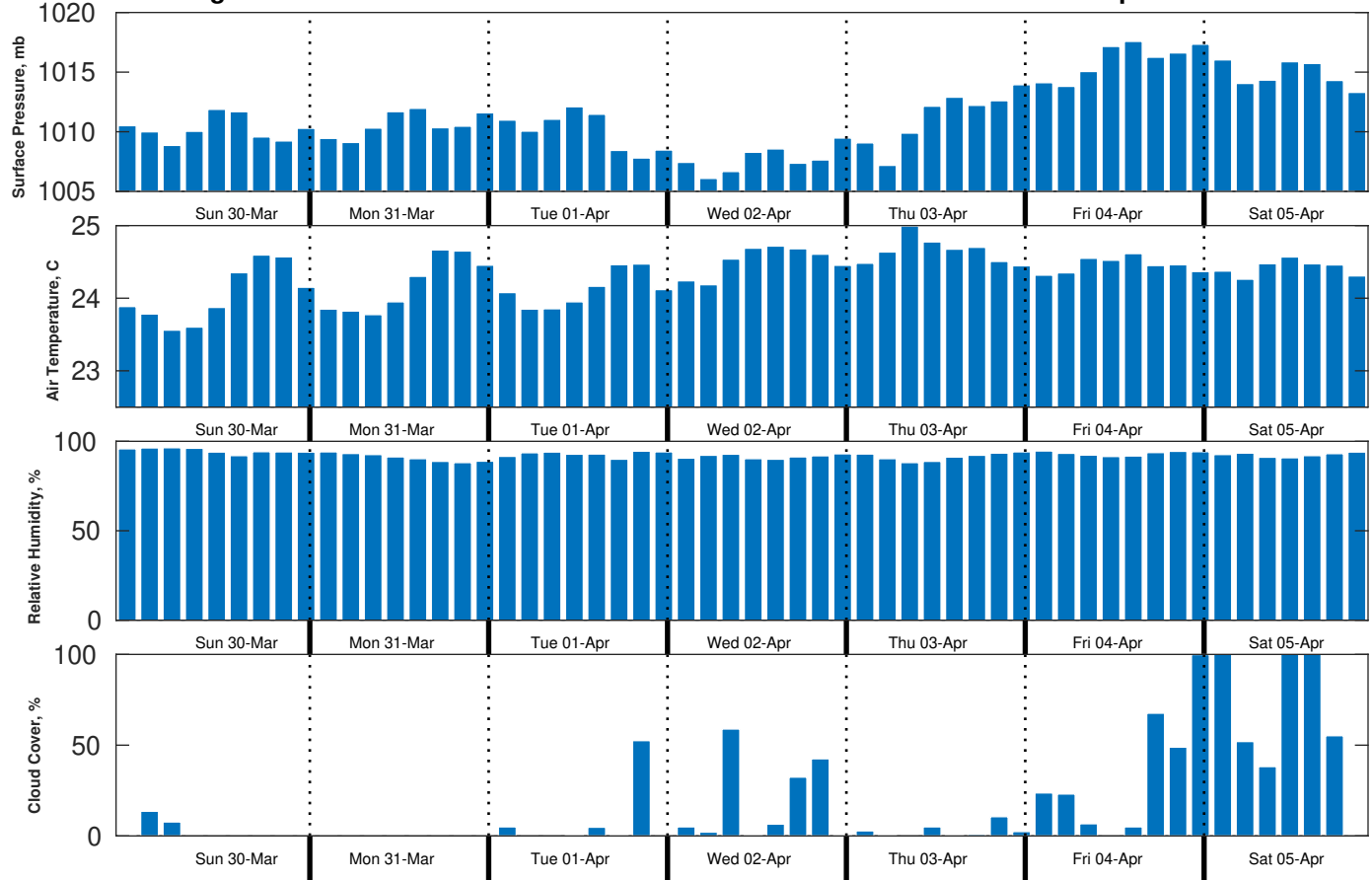
Thursday Night

Winds: NE, 20-25 kts.  
Waves: NE, 8-9 feet, 8-9 sec.  
No currents available.

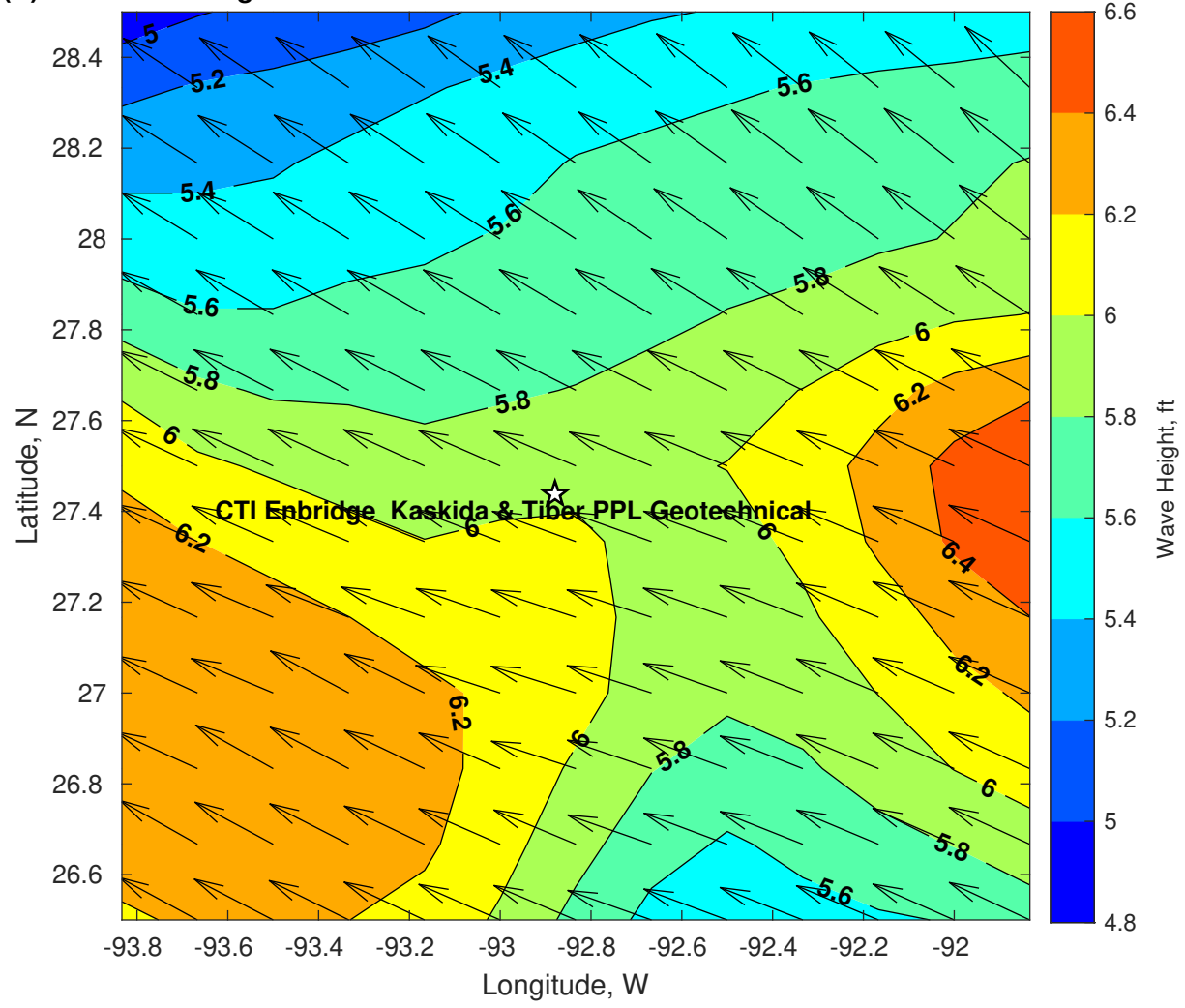
Wind & Wave Forecast for CTI Enbridge Kaskida & Tiber PPL Geotechnical from 29-Mar-2025 20:00:00 to 14-Apr-2025 20:00:00



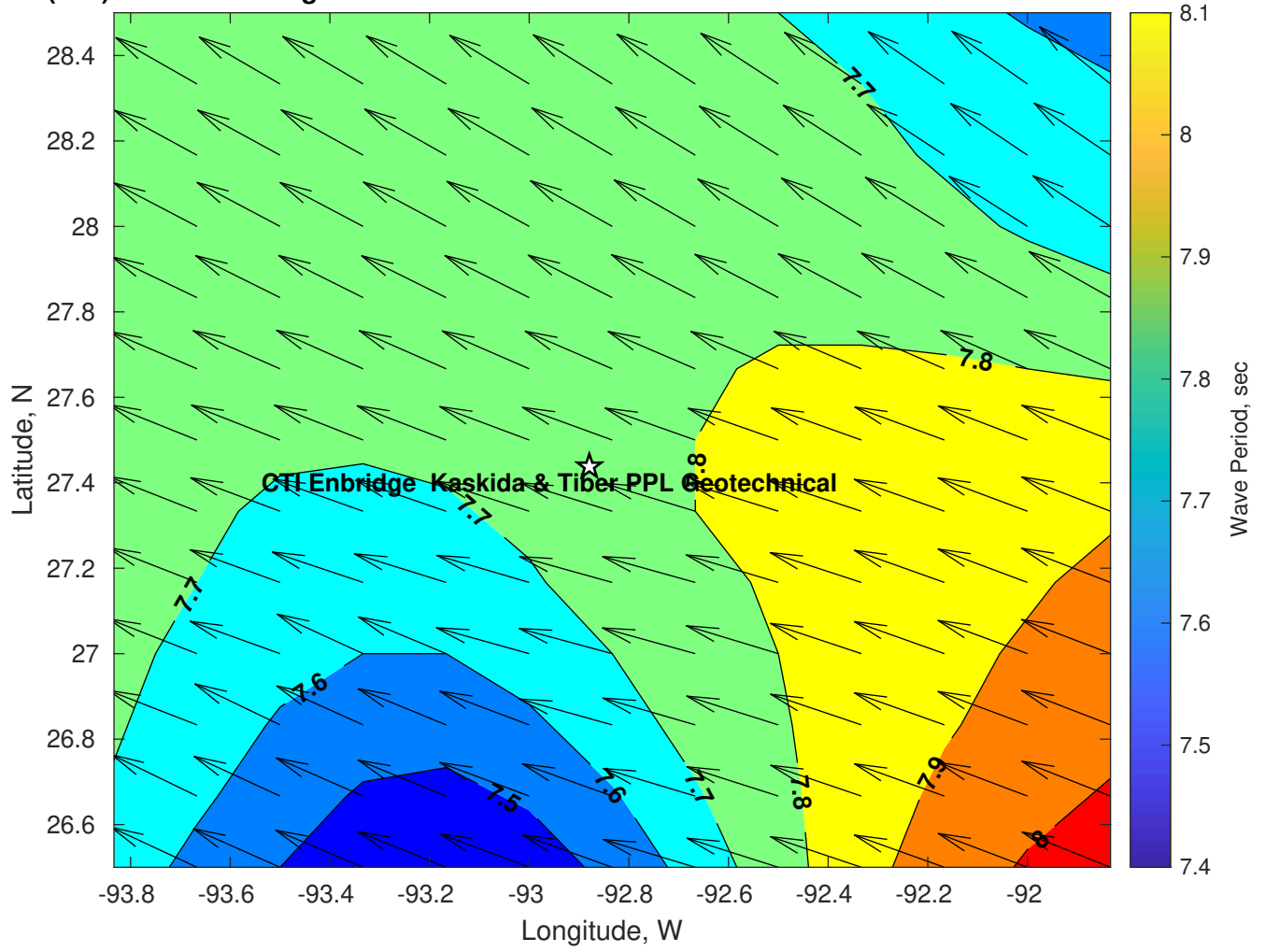
**Met Forecast for CTI Enbridge Kaskida & Tiber PPL Geotechnical from 30-Mar-2025 00:00:00 to 06-Apr-2025 00:00:00**



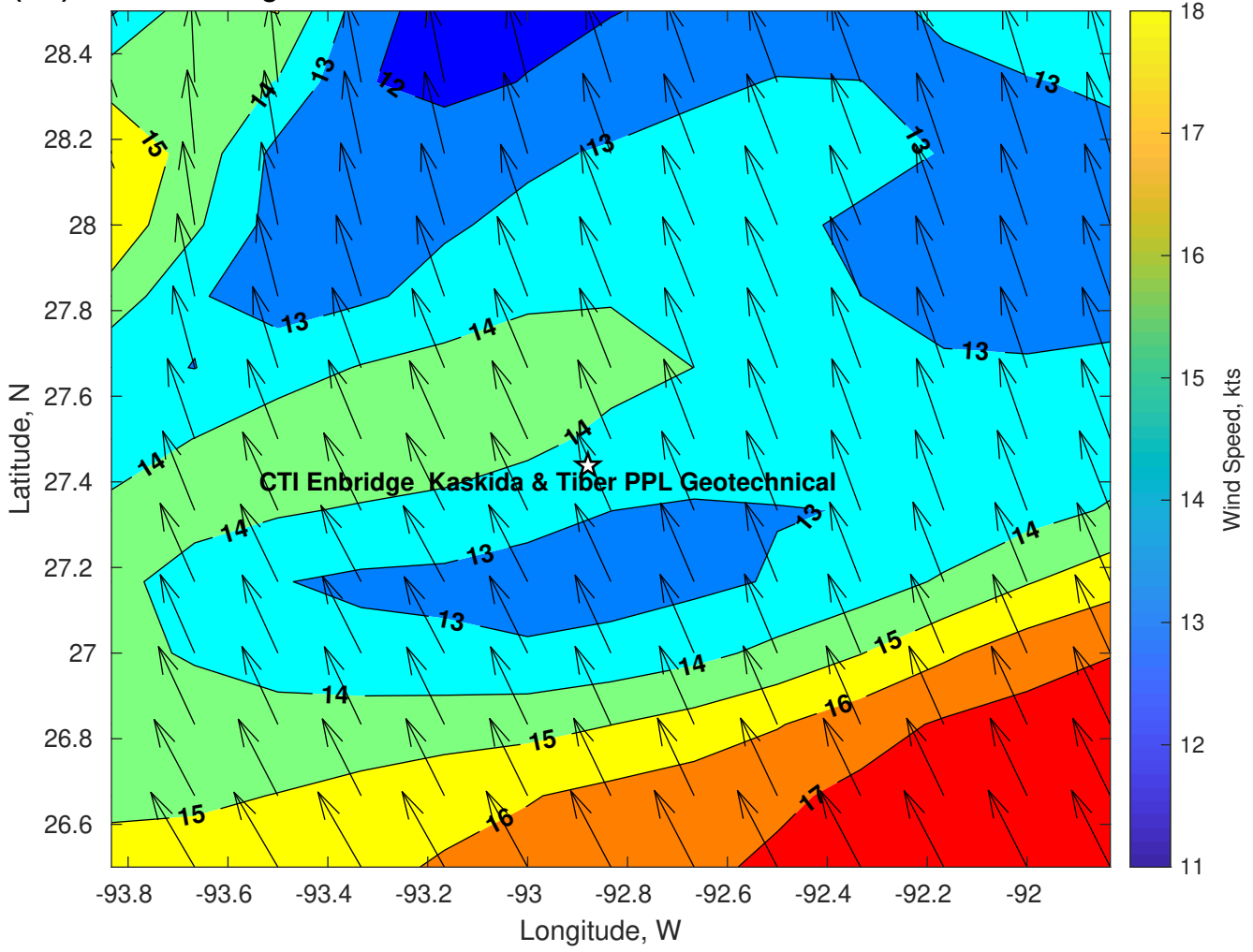
Wave Height (ft) for CTI Enbridge Kaskida & Tiber PPL Geotechnical at 30-Mar-2025 09:00:00



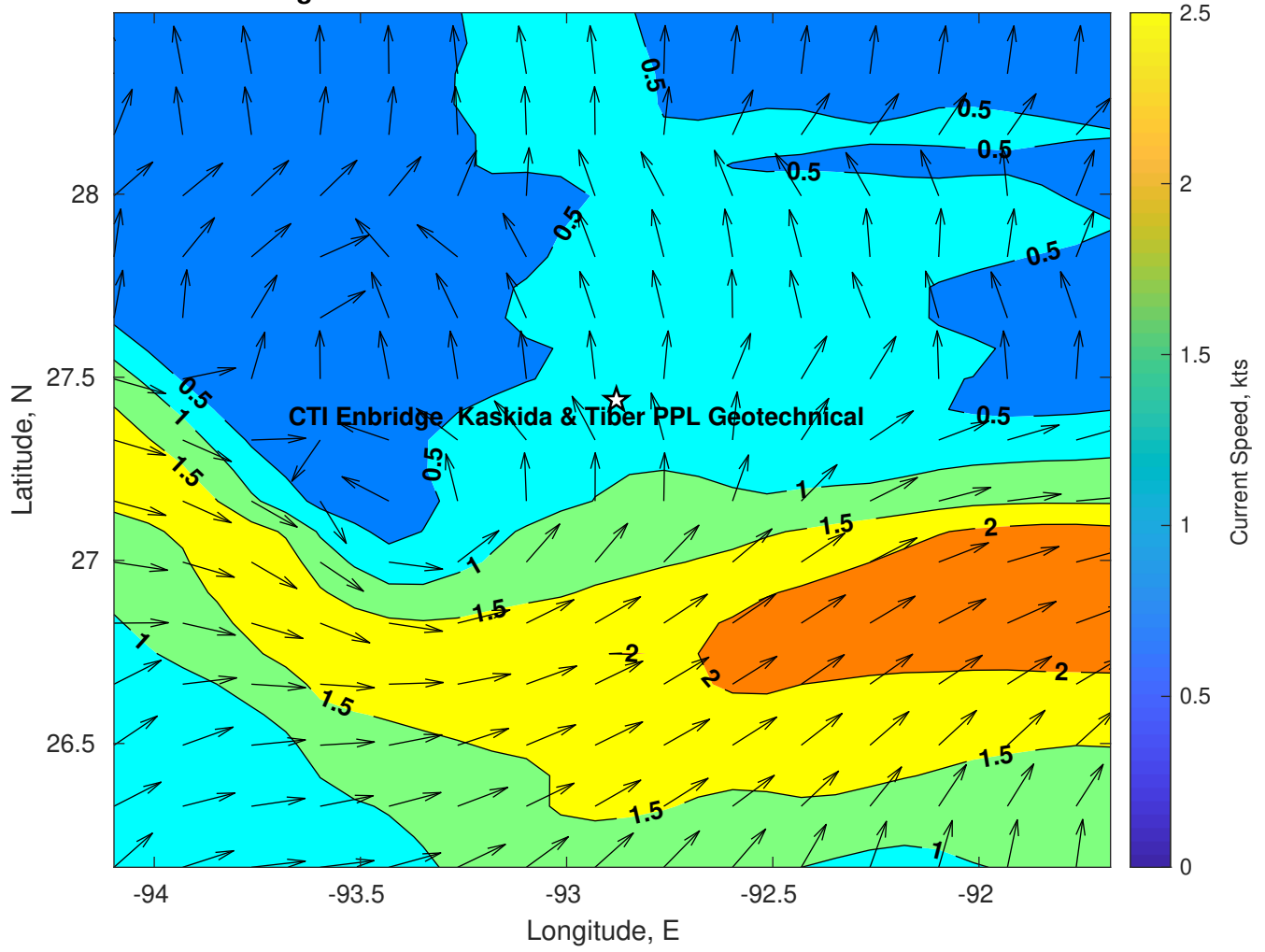
Wave Period (sec) for CTI Enbridge Kaskida & Tiber PPL Geotechnical at 30-Mar-2025 09:00:00



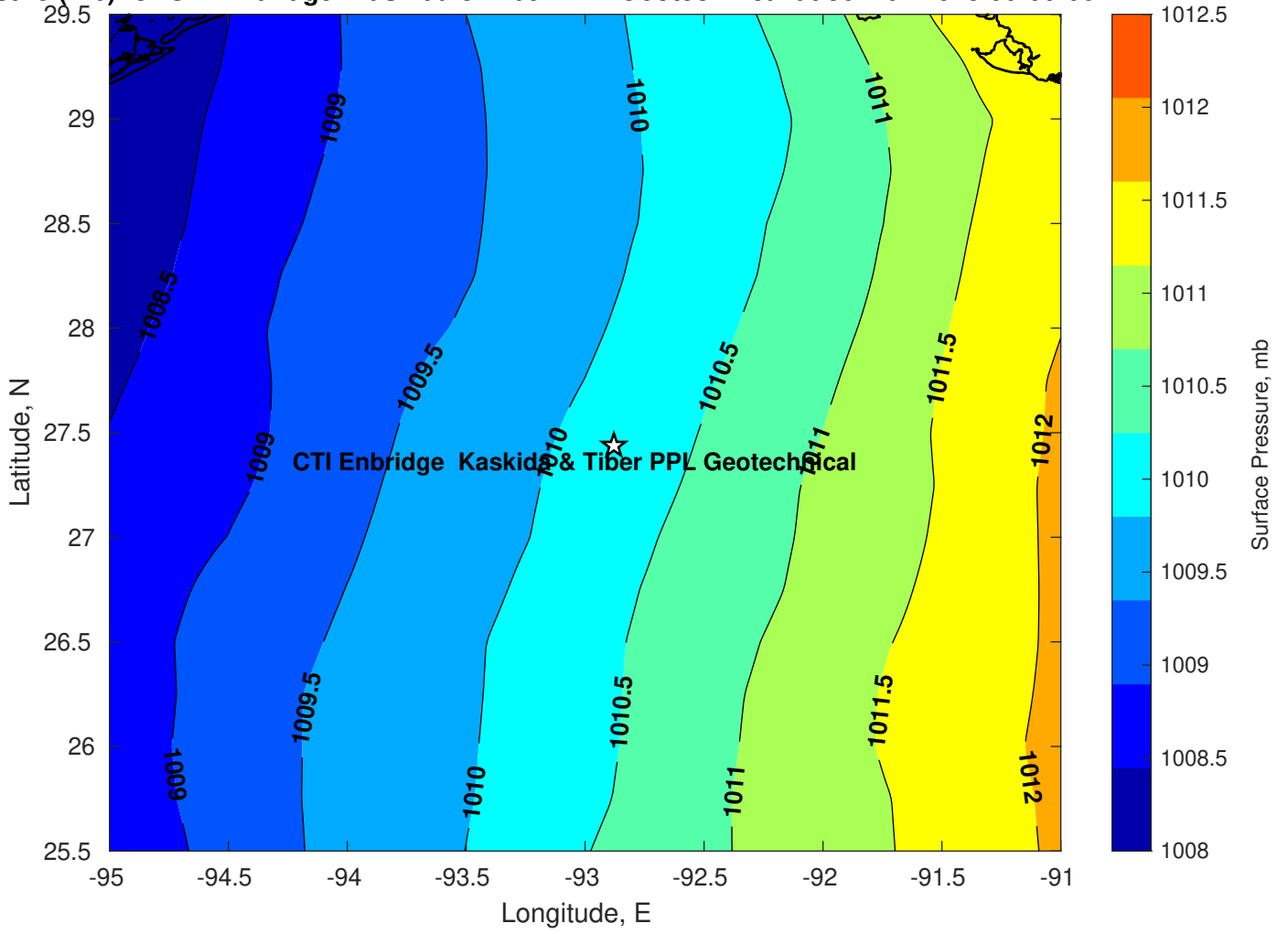
**Winds (kts) for CTI Enbridge Kaskida & Tiber PPL Geotechnical at 30-Mar-2025 09:00:00**



Surface Currents for CTI Enbridge Kaskida & Tiber PPL Geotechnical at 29-Mar-2025 00:00:00

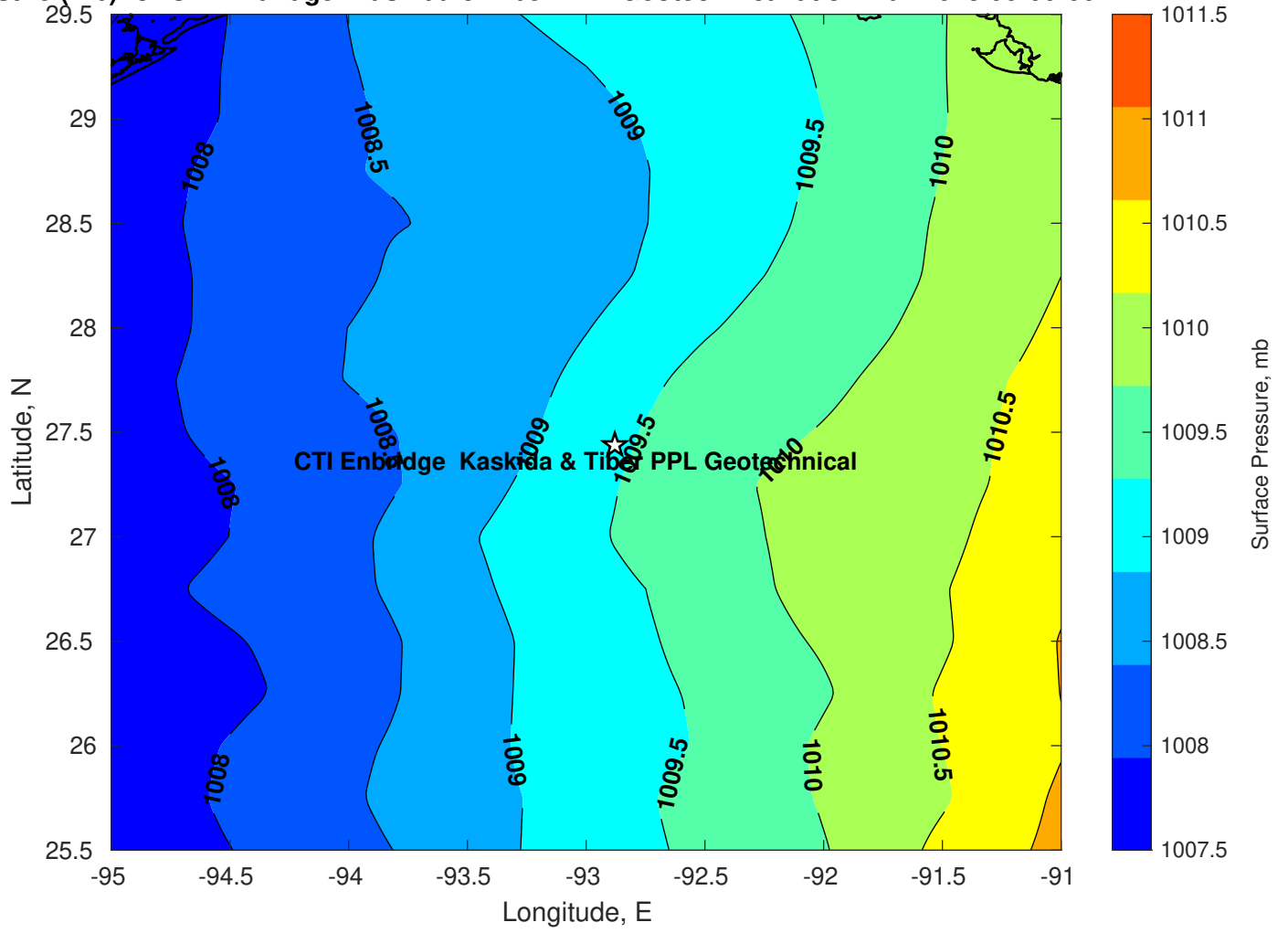


Surface Pressure (mb) for CTI Enbridge Kaskida & Tiber PPL Geotechnical at 30-Mar-2025 00:00:00

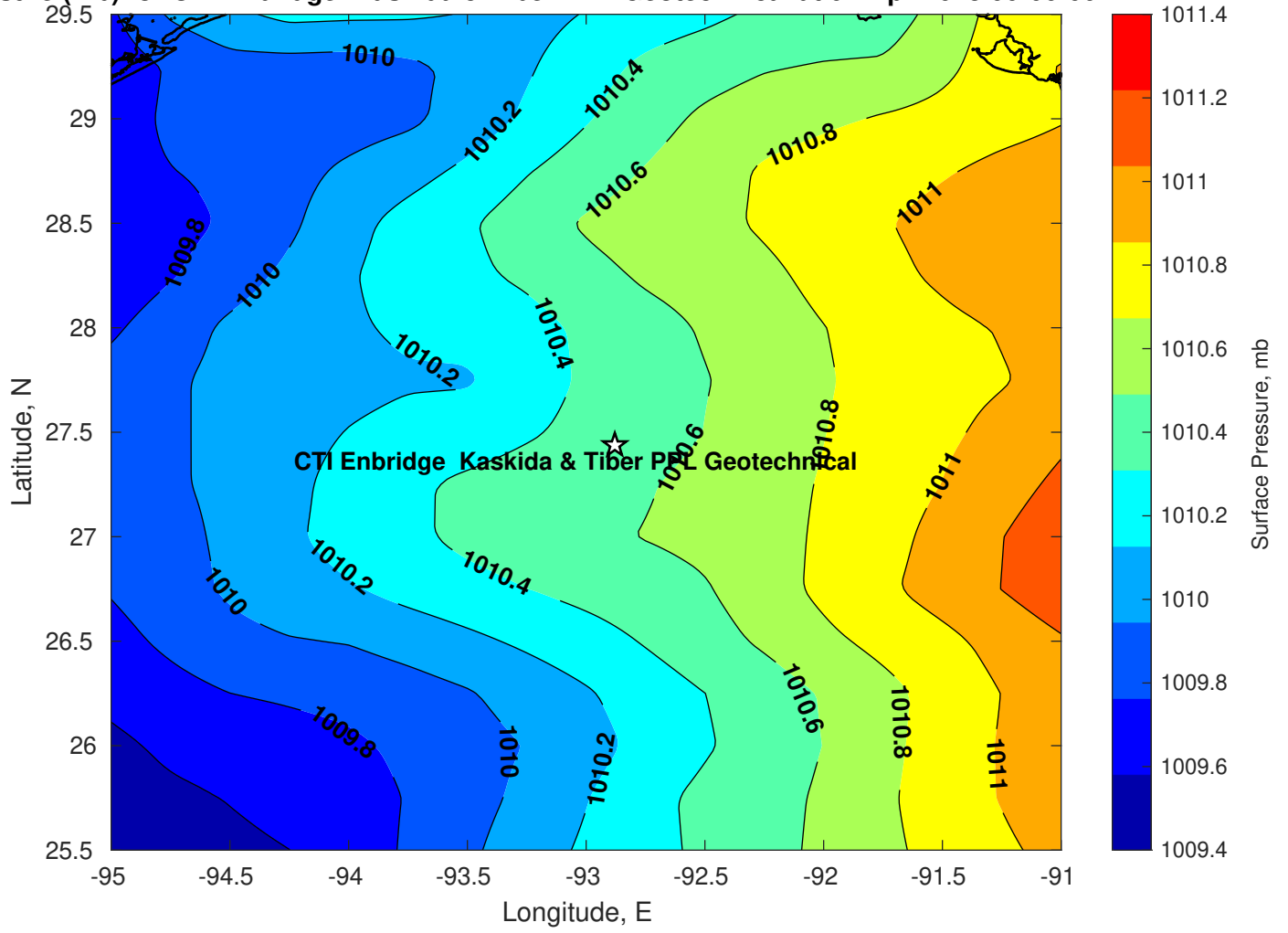




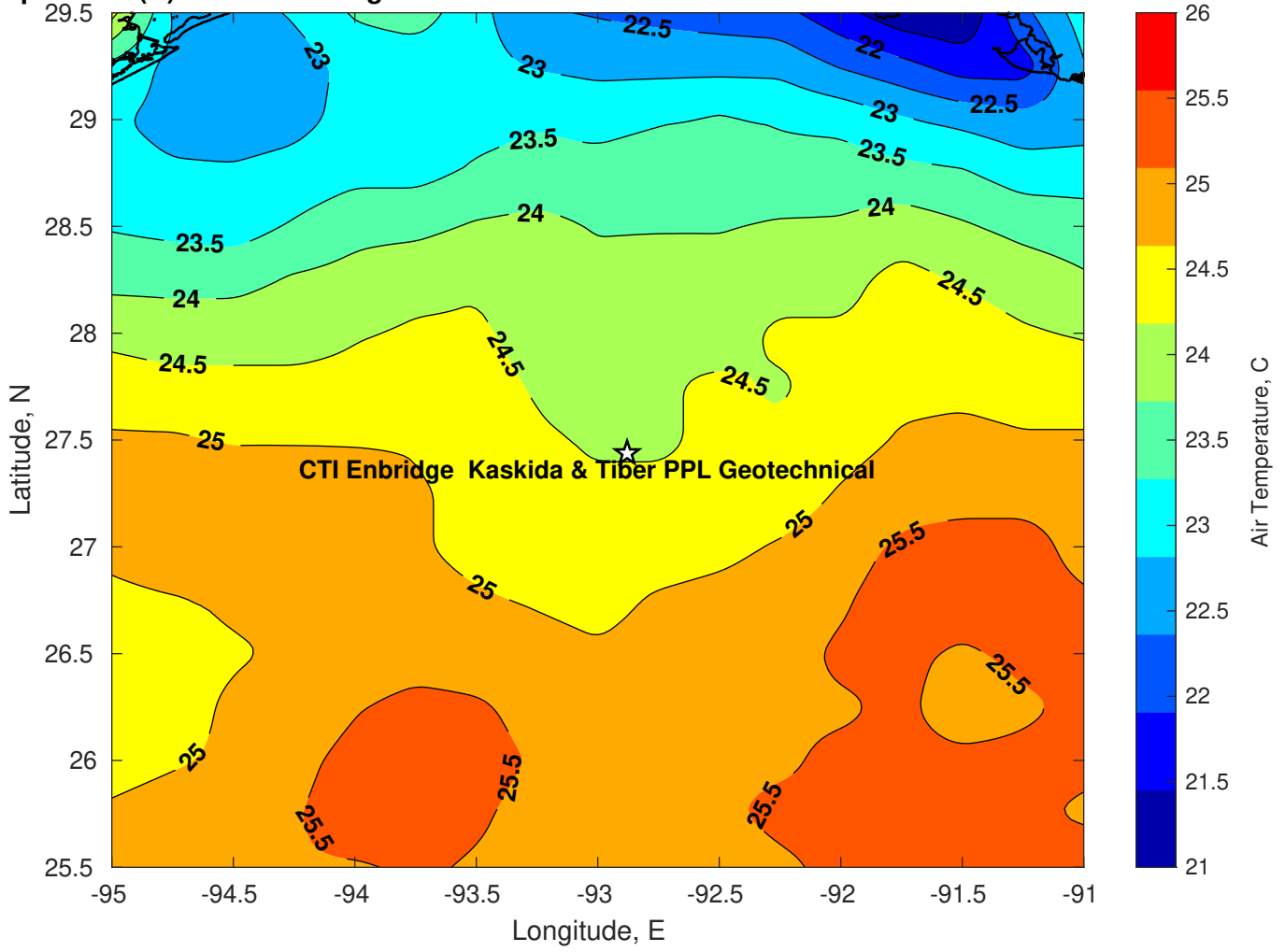
Surface Pressure (mb) for CTI Enbridge Kaskida & Tiber PPL Geotechnical at 31-Mar-2025 00:00:00



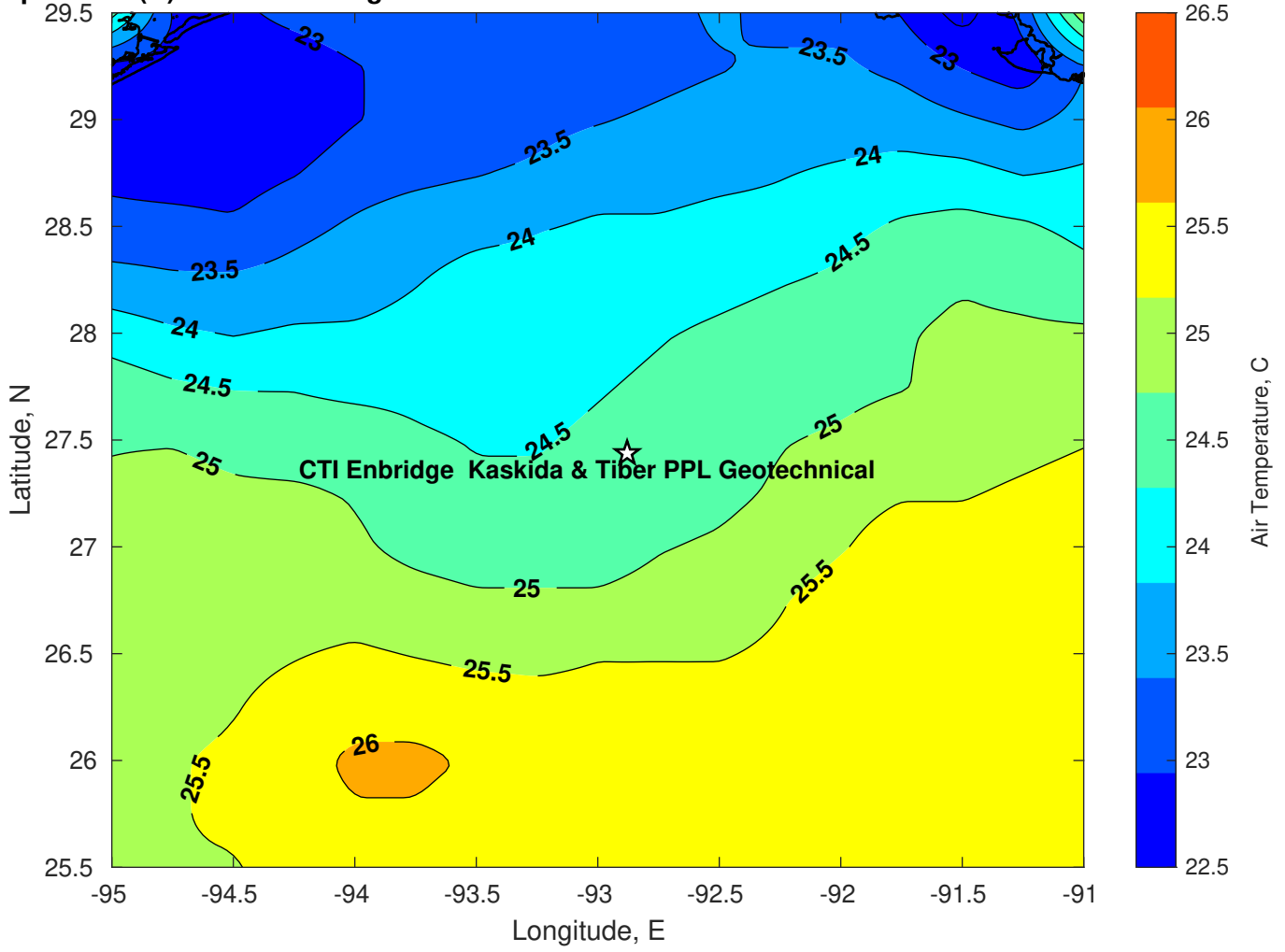
Surface Pressure (mb) for CTI Enbridge Kaskida & Tiber PPL Geotechnical at 01-Apr-2025 00:00:00



**Air Temperature (C) for CTI Enbridge Kaskida & Tiber PPL Geotechnical at 30-Mar-2025**



**Air Temperature (C) for CTI Enbridge Kaskida & Tiber PPL Geotechnical at 30-Mar-2025**



**Air Temperature (C) for CTI Enbridge Kaskida & Tiber PPL Geotechnical at 30-Mar-2025**

