

\*\*\*\*\*

Marine Weather Forecast for CSA (ONHYM) PPL EBS - Cote d'Ivoire

Forecast valid as of 01-Apr-2025 0800 GMT

\*\*\*\*\*

All times are local.

Today

Winds: NW, 10-15 kts.

Waves: N, 4-5 feet, 17-18 sec.

No currents available.

Tonight

Winds: NW, 10-15 kts.

Waves: N, 4-5 feet, 16-17 sec.

No currents available.

Wednesday

Winds: NW, 10-15 kts.

Waves: N, 4-5 feet, 15-16 sec.

No currents available.

Wednesday Night

Winds: NW, 10-15 kts.

Waves: N, 4-5 feet, 14-15 sec.

No currents available.

Thursday

Winds: NW, 10-15 kts.

Waves: N, 4-5 feet, 14-15 sec.

No currents available.

Thursday Night

Winds: N, 10-15 kts.

Waves: N, 4-5 feet, 13-14 sec.

No currents available.

Friday

Winds: NW, 10-15 kts.

Waves: N, 4-5 feet, 13-14 sec.

No currents available.

Friday Night

Winds: NW, 10-15 kts.

Waves: N, 3-4 feet, 12-13 sec.

No currents available.

Saturday

Winds: NW, 15-20 kts.

Waves: N, 3-4 feet, 11-12 sec.

No currents available.

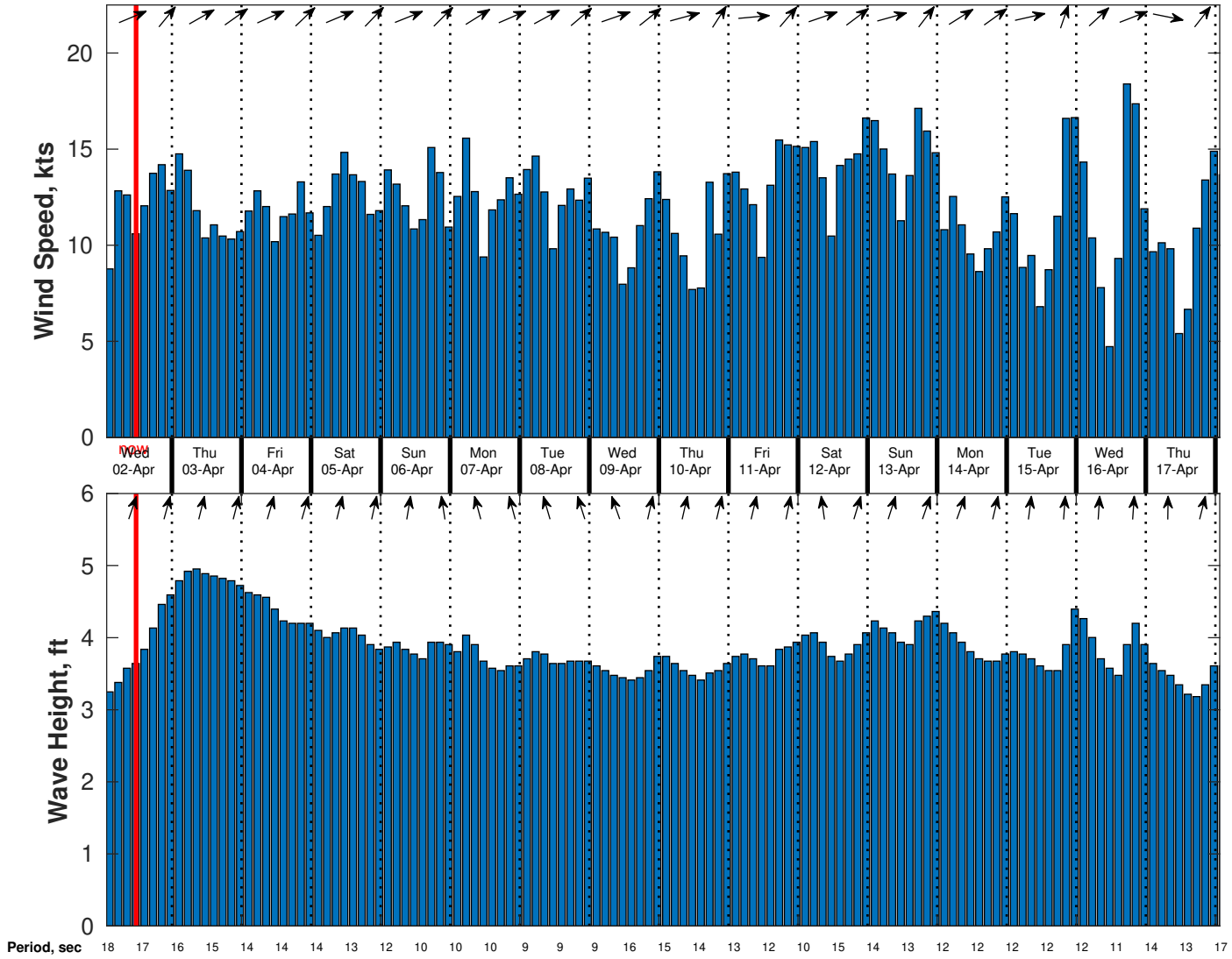
Saturday Night

Winds: N, 15-20 kts.

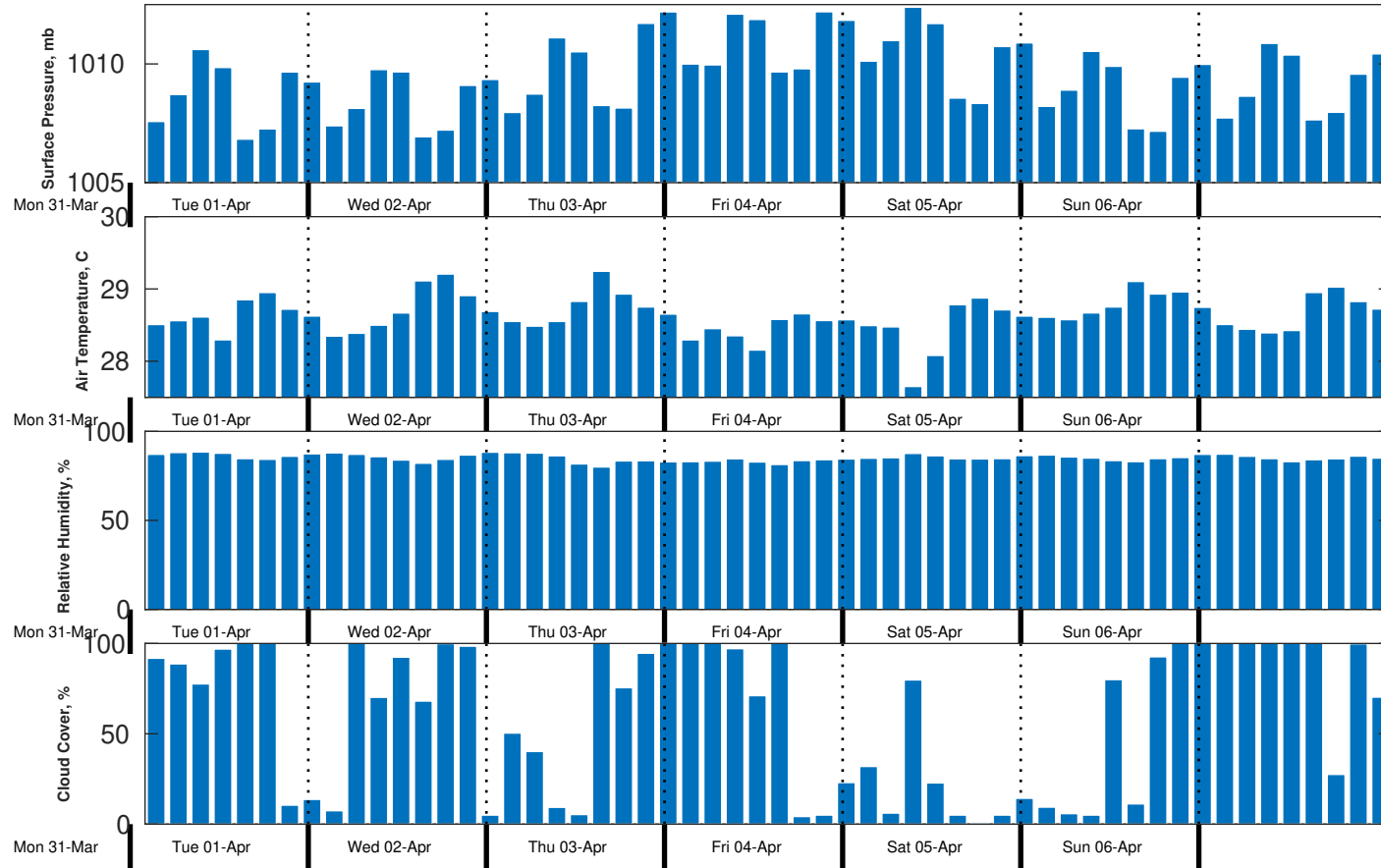
Waves: N, 4-5 feet, 9-10 sec.

No currents available.

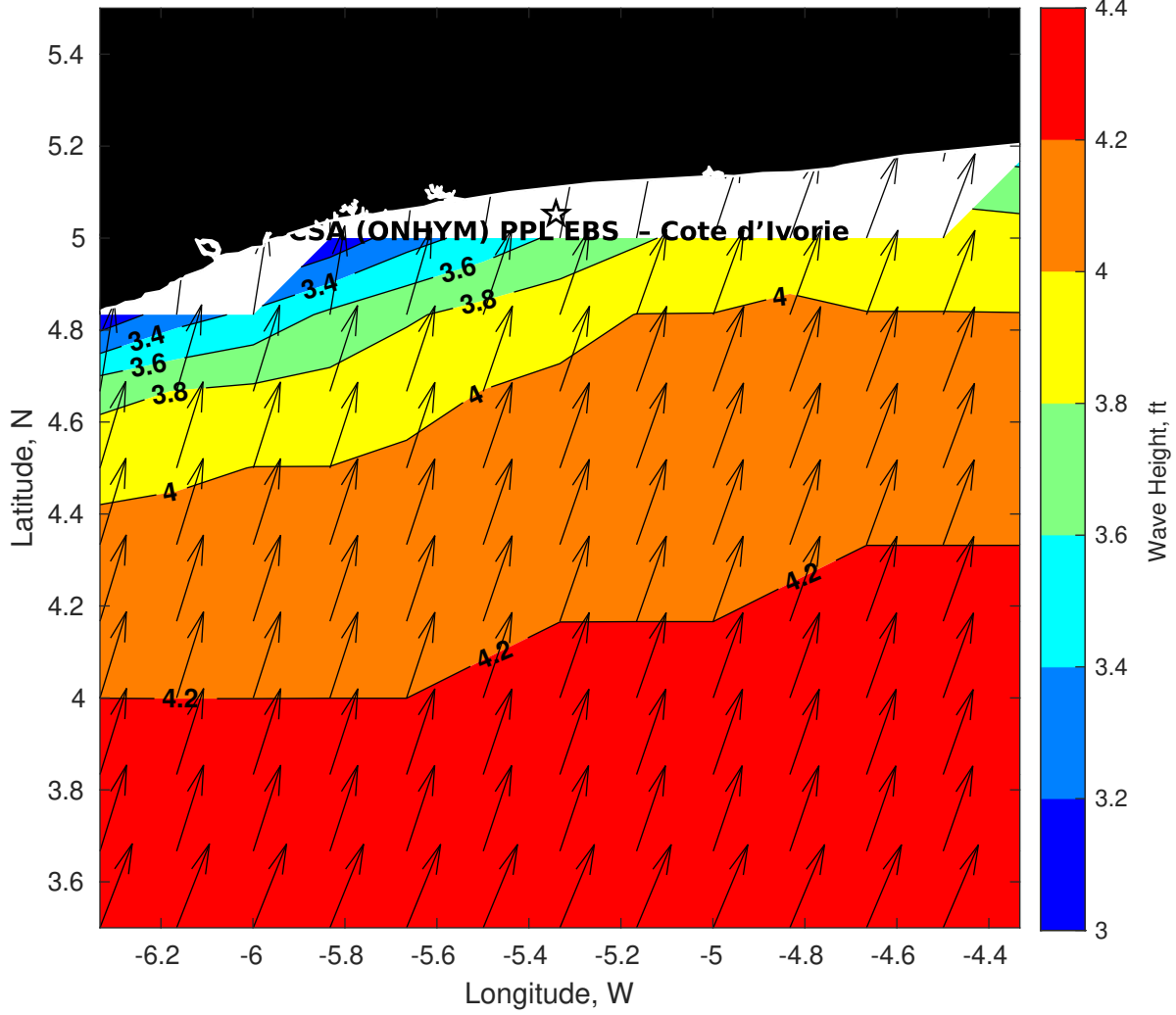
**Wind & Wave Forecast for CSA (ONHYM) PPL EBS - Cote d'Ivoire from 01-Apr-2025 01:00:00 to 17-Apr-2025 01:00:00**



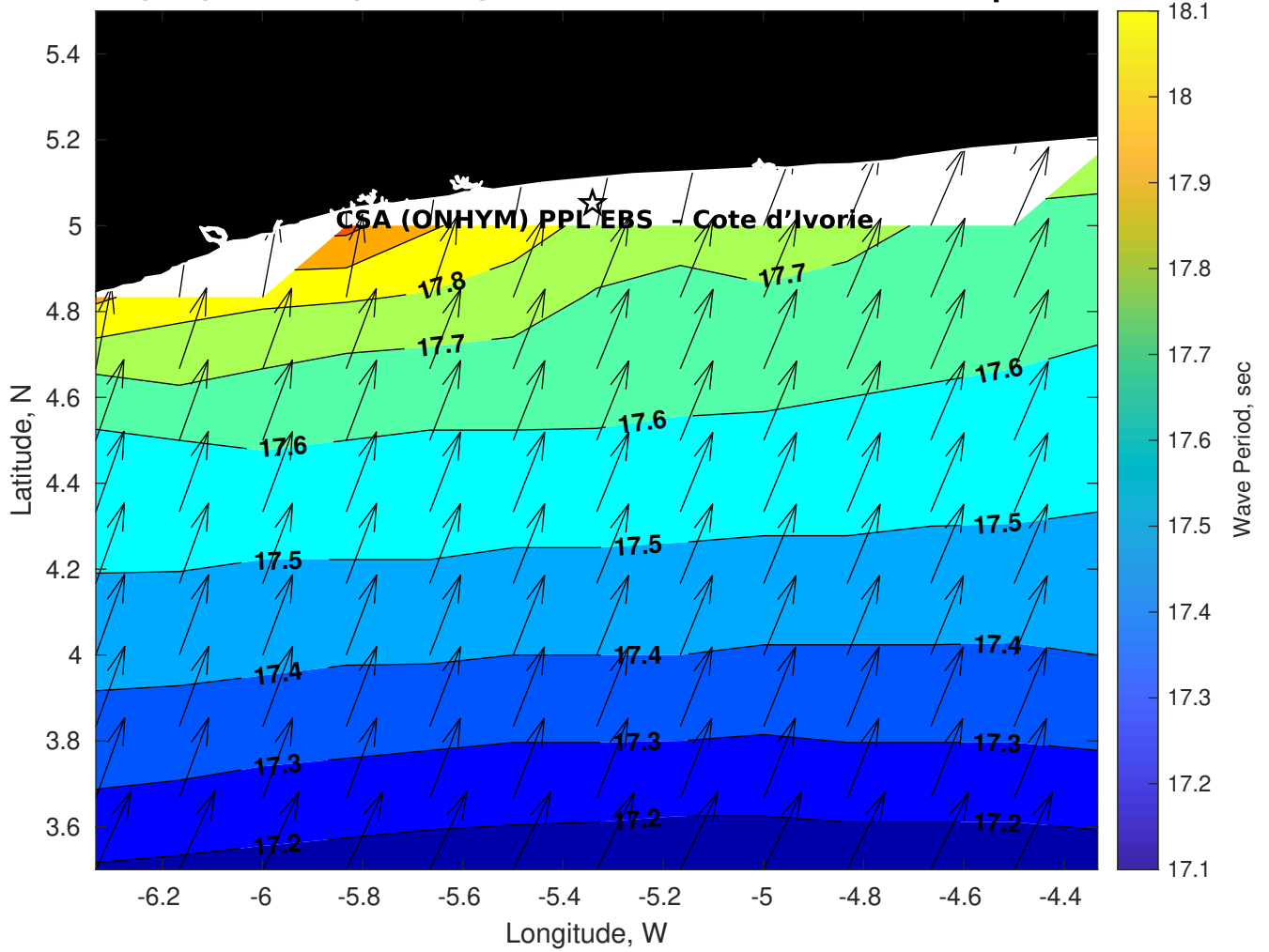
**Met Forecast for CSA (ONHYM) PPL EBS - Cote d'Ivoire from 01-Apr-2025 00:00:00 to 08-Apr-2025 00:00:00**



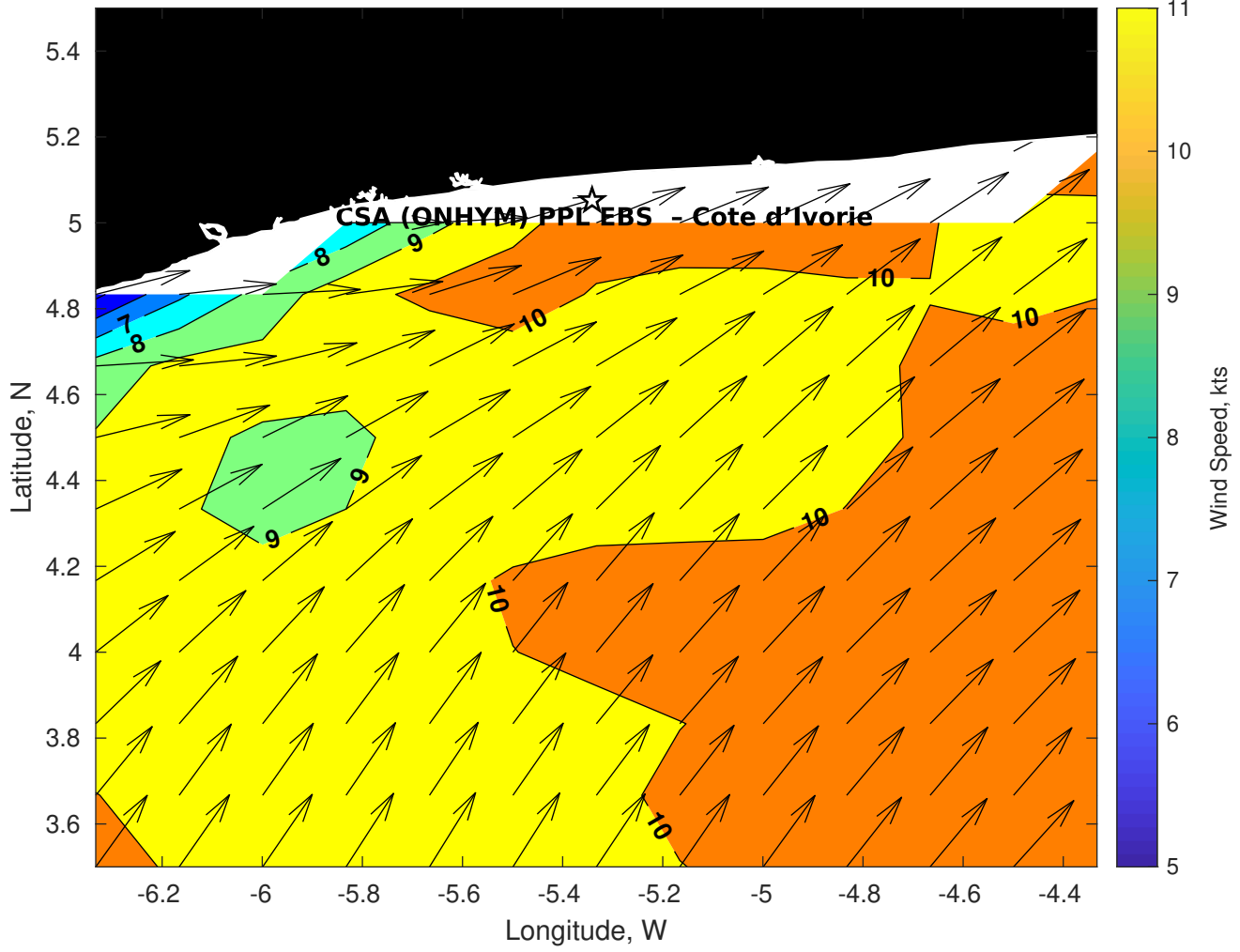
**Wave Height (ft) for CSA (ONHYM) PPL EBS - Cote d'Ivoire at 01-Apr-2025 09:00:00**



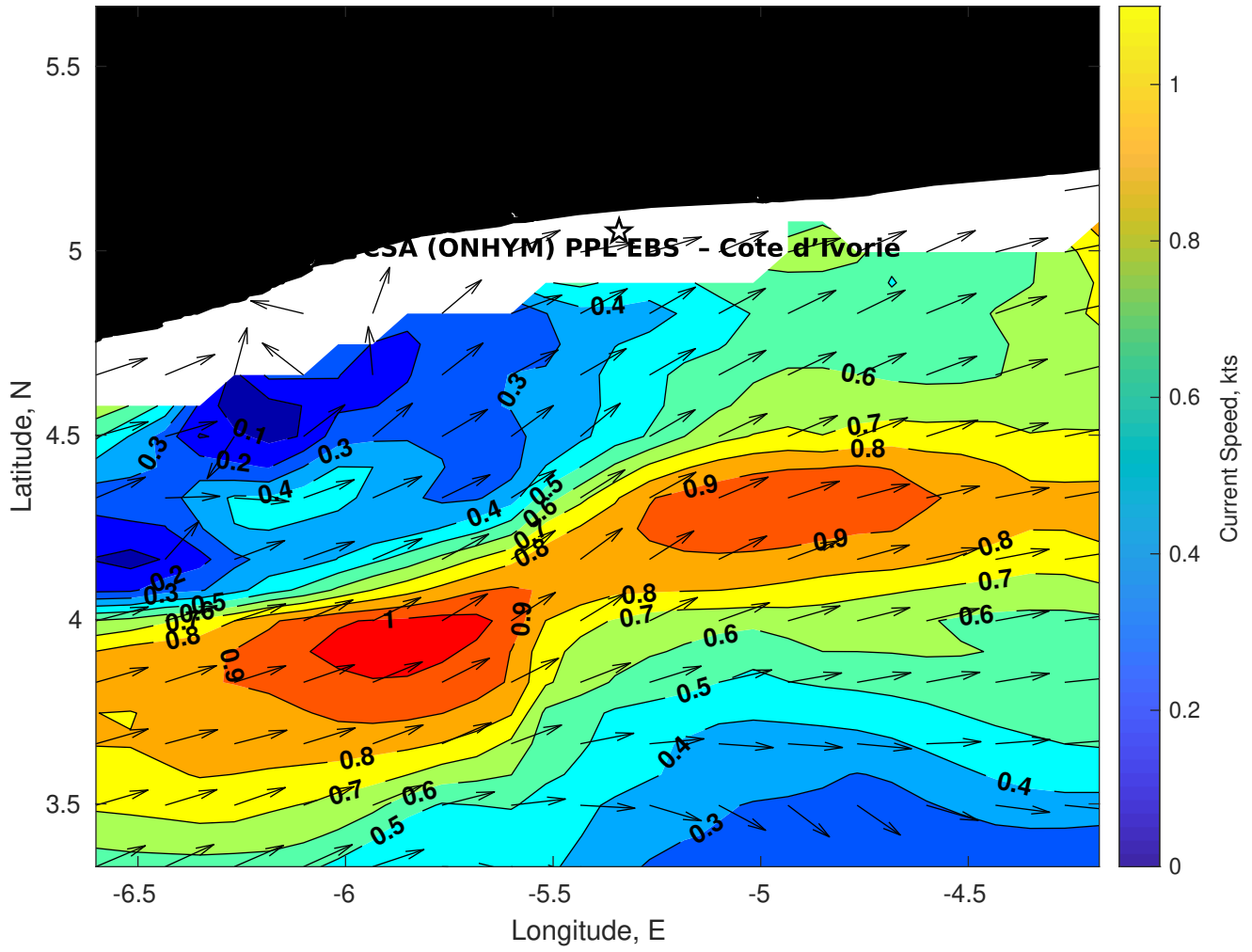
**Wave Period (sec) for CSA (ONHYM) PPL EBS - Cote d'Ivoire at 01-Apr-2025 09:00:00**



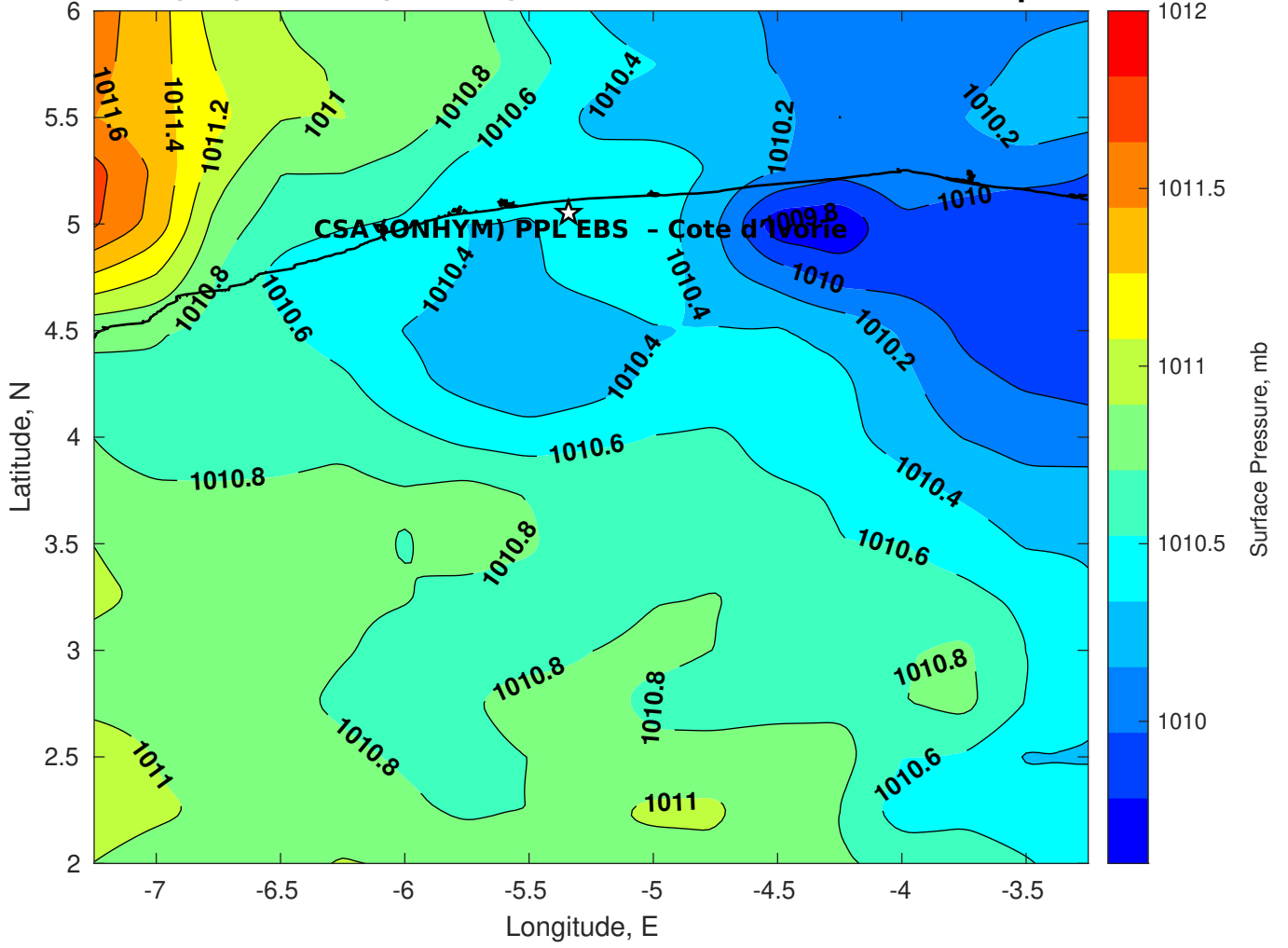
**Winds (kts) for CSA (ONHYM) PPL EBS - Cote d'Ivoire at 01-Apr-2025 09:00:00**



### Surface Currents for CSA (ONHYM) PPL EBS - Cote d'Ivoire at 31-Mar-2025 00:00:00

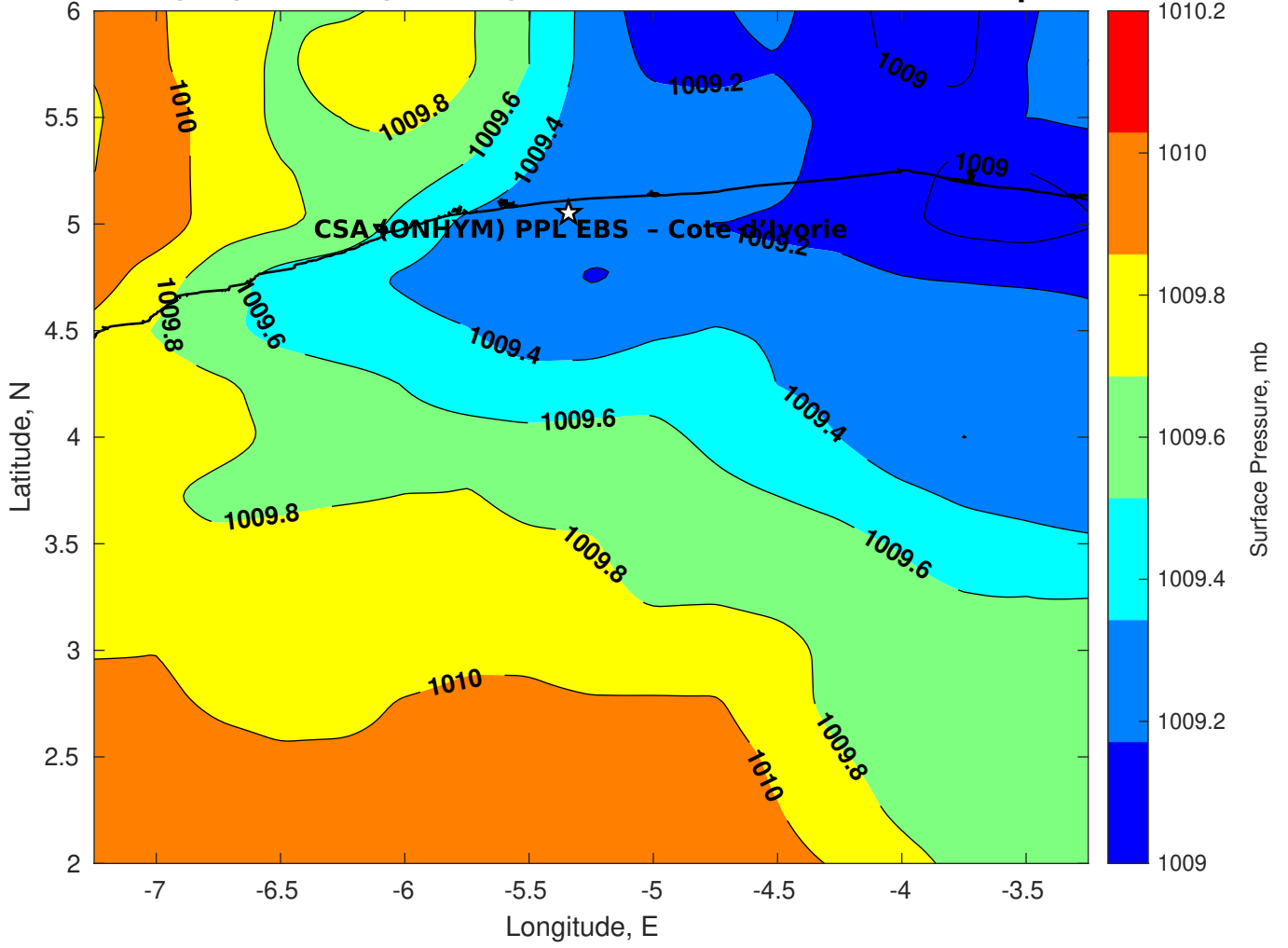


Surface Pressure (mb) for CSA (ONHYM) PPL EBS - Cote d'Ivoire at 01-Apr-2025 00:00:00

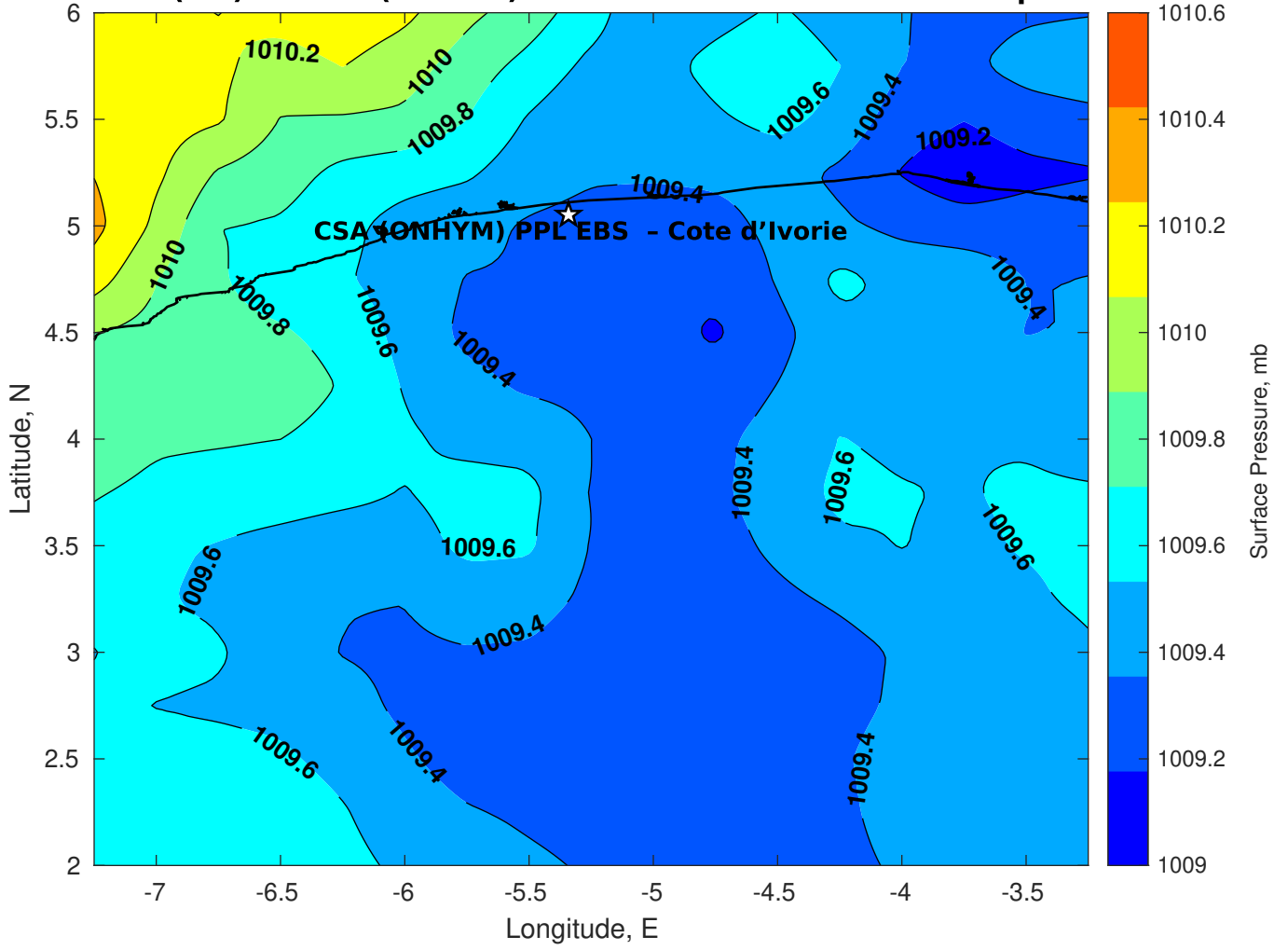




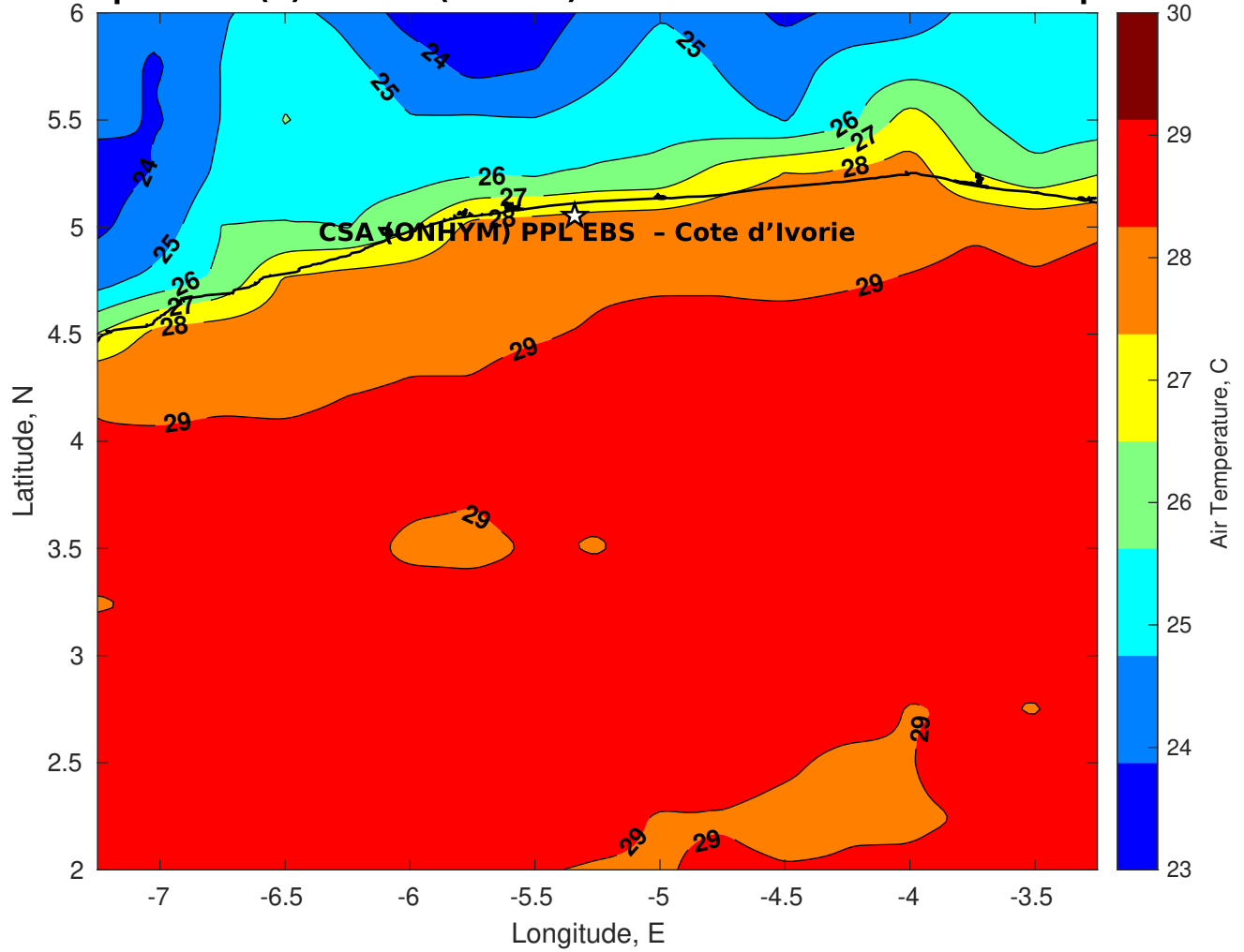
Surface Pressure (mb) for CSA (ONHYM) PPL EBS - Cote d'Ivoire at 02-Apr-2025 00:00:00



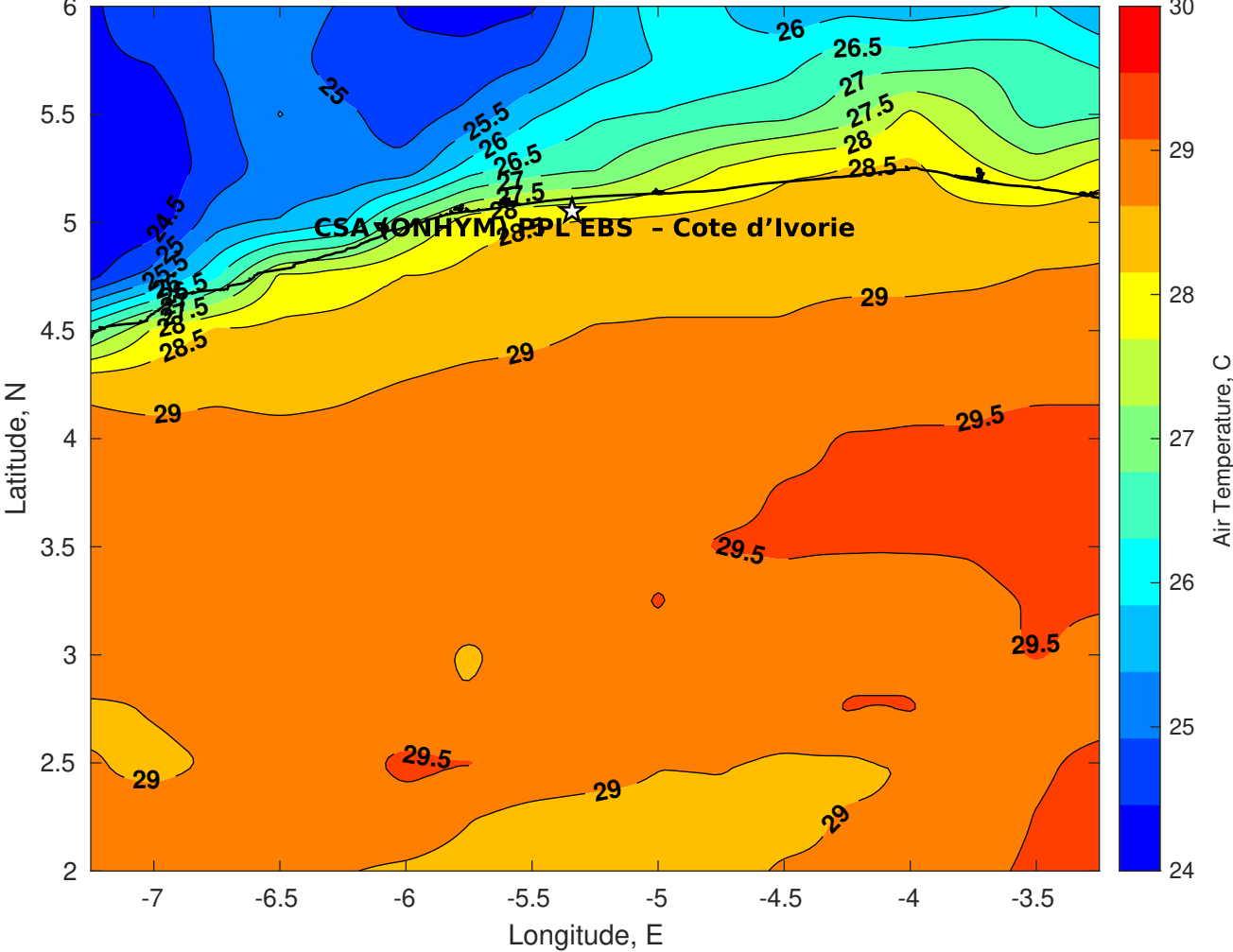
**Surface Pressure (mb) for CSA (ONHYM) PPL EBS - Cote d'Ivoire at 03-Apr-2025 00:00:00**



**Air Temperature (C) for CSA (ONHYM) PPL EBS - Cote d'Ivoire at 01-Apr-2025**



**Air Temperature (C) for CSA (ONHYM) PPL EBS - Cote d'Ivoire at 01-Apr-2025**



**Air Temperature (C) for CSA (ONHYM) PPL EBS - Cote d'Ivoire at 01-Apr-2025**

