
Marine Weather Forecast for Shell Noches GC19 PPL Geotechnical
Forecast valid as of 01-Apr-2025 0800 GMT

All times are local.

Today

Winds: NE, 10-15 kts.
Waves: N, 3-4 feet, 6-7 sec.
No currents available.

Tonight

Winds: NE, 20-25 kts.
Waves: N, 4-5 feet, 5-6 sec.
No currents available.

Wednesday

Winds: NE, 20-25 kts.
Waves: N, 7-8 feet, 8-9 sec.
No currents available.

Wednesday Night

Winds: NE, 20-25 kts.
Waves: N, 8-9 feet, 8-9 sec.
No currents available.

Thursday

Winds: NE, 25-30 kts.
Waves: N, 9-10 feet, 9-10 sec.
No currents available.

Thursday Night

Winds: NE, 20-25 kts.
Waves: NE, 7-8 feet, 8-9 sec.
No currents available.

Friday

Winds: NE, 20-25 kts.
Waves: NE, 7-8 feet, 8-9 sec.
No currents available.

Friday Night

Winds: NE, 20-25 kts.
Waves: NE, 7-8 feet, 8-9 sec.
No currents available.

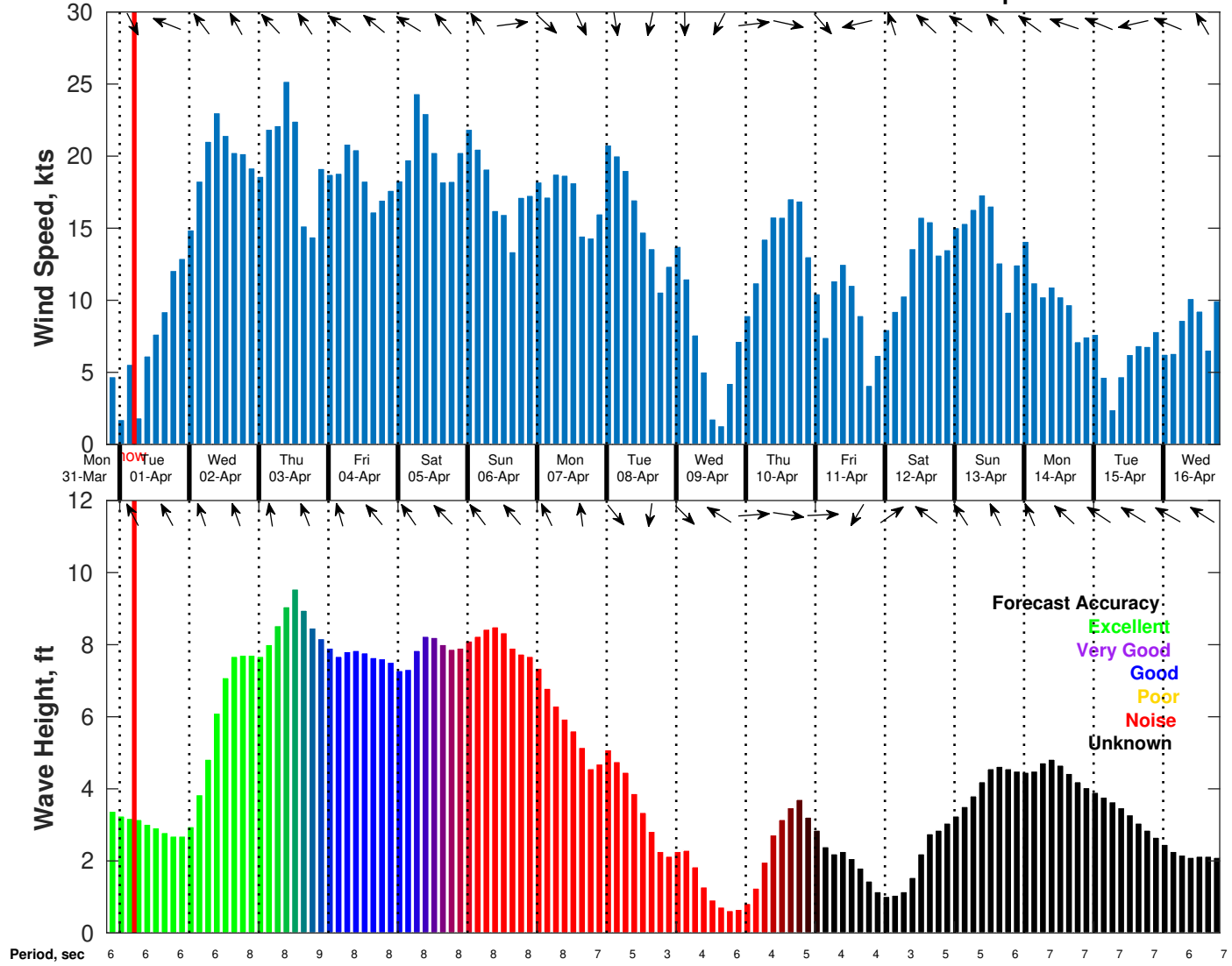
Saturday

Winds: NE, 20-25 kts.
Waves: NE, 8-9 feet, 8-9 sec.
No currents available.

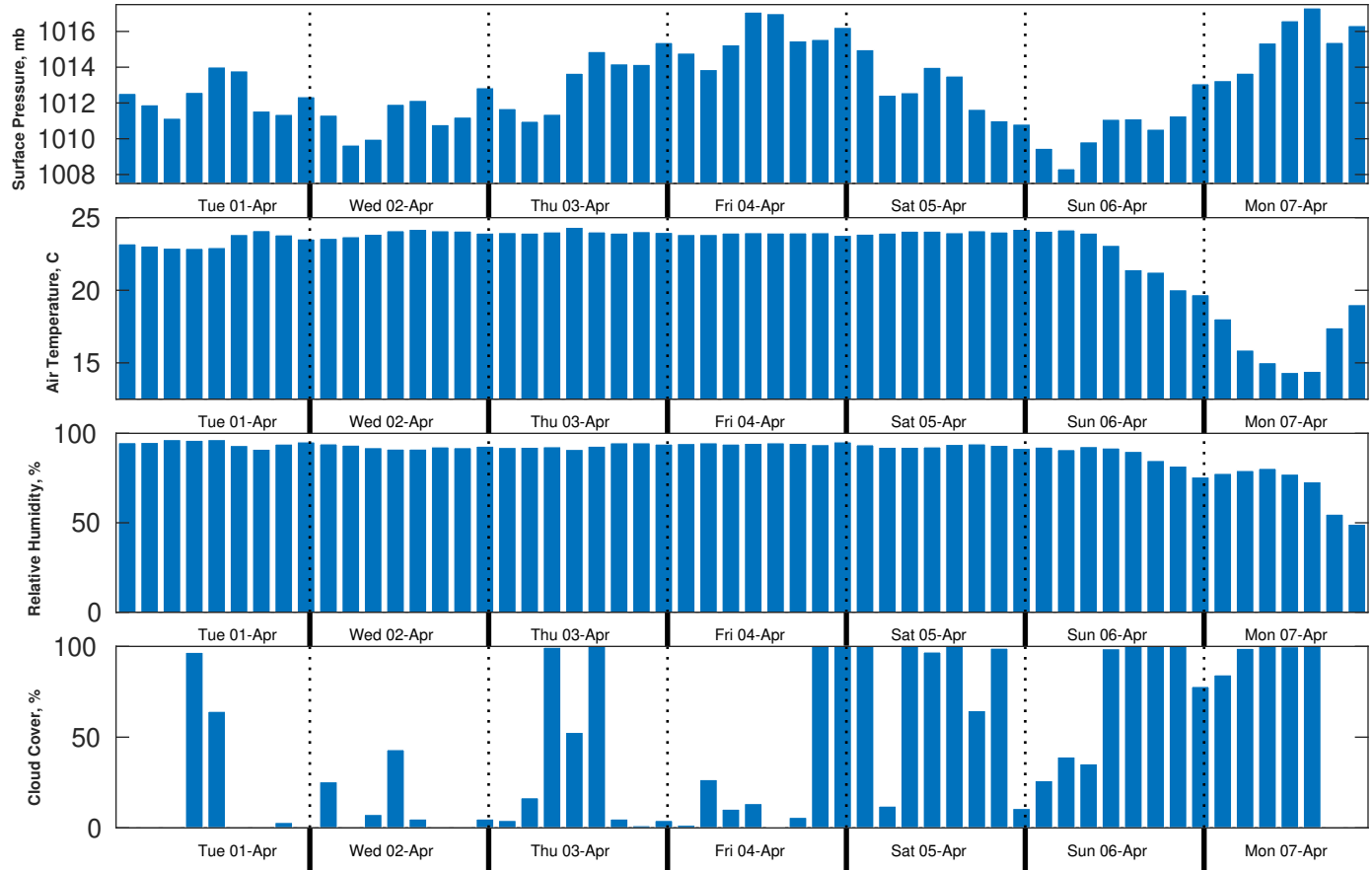
Saturday Night

Winds: NE, 20-25 kts.
Waves: NE, 8-9 feet, 7-8 sec.
No currents available.

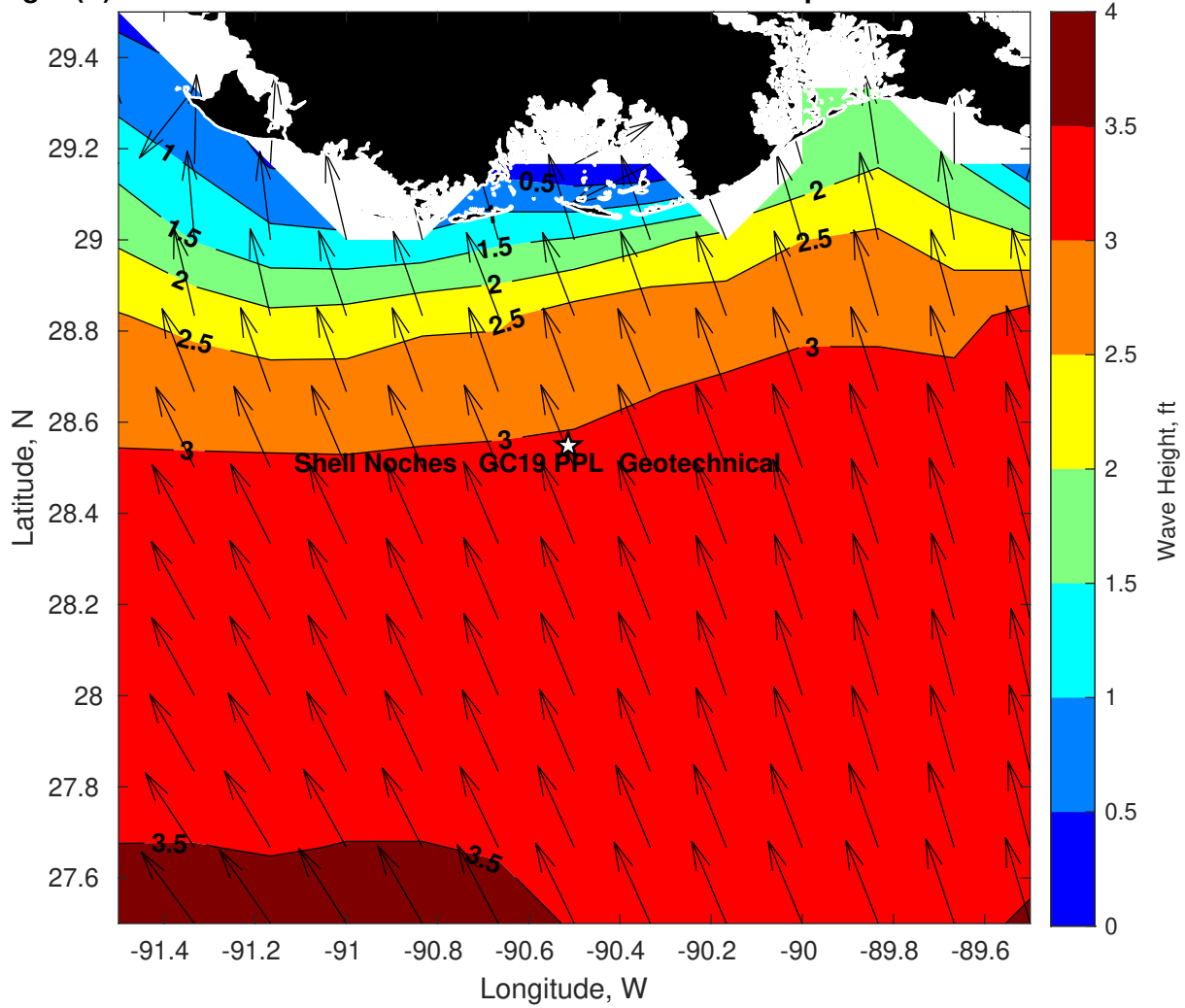
Wind & Wave Forecast for Shell Noches GC19 PPL Geotechnical from 31-Mar-2025 20:00:00 to 16-Apr-2025 20:00:00



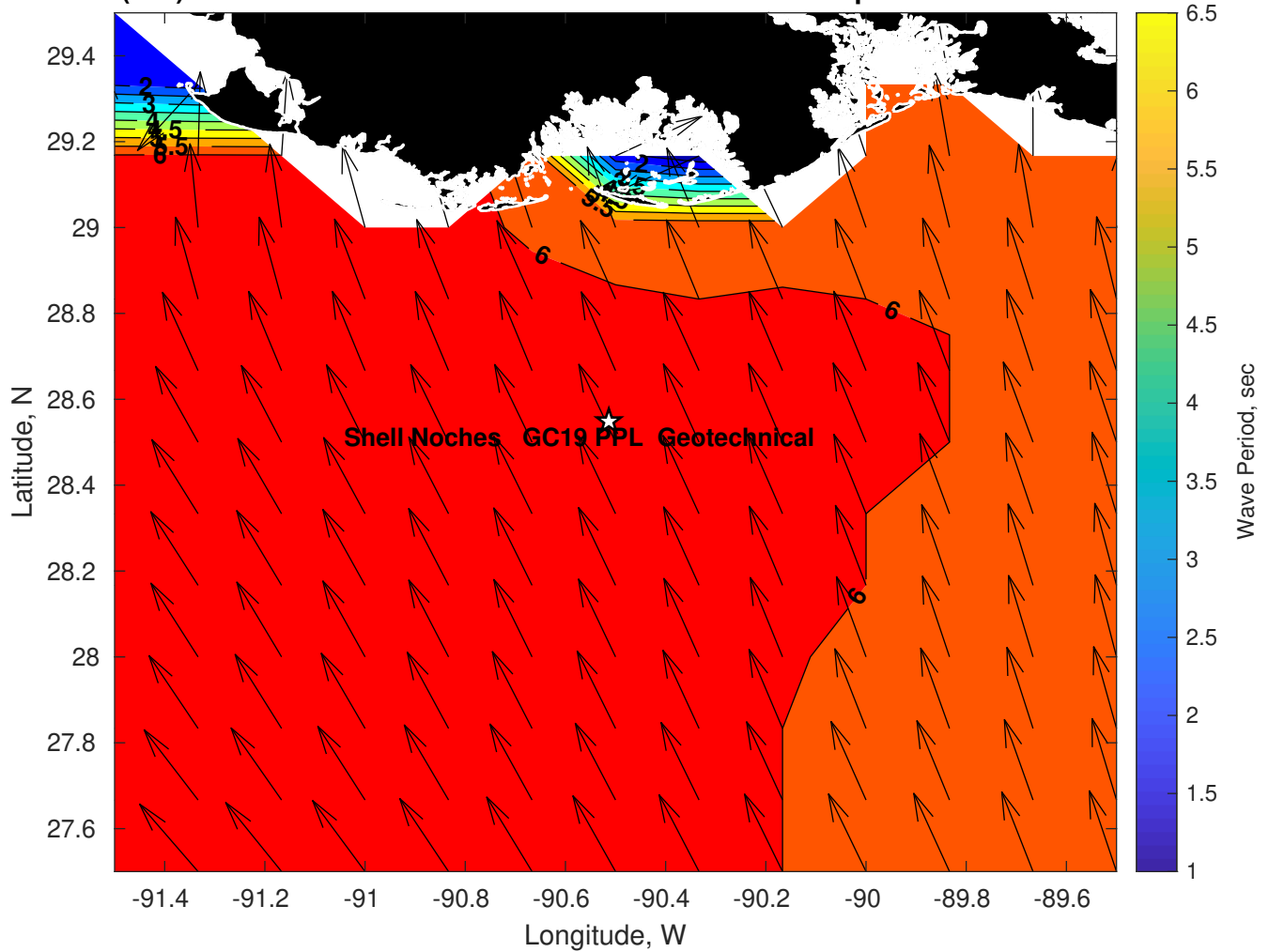
Met Forecast for Shell Noches GC19 PPL Geotechnical from 01-Apr-2025 00:00:00 to 08-Apr-2025 00:00:00



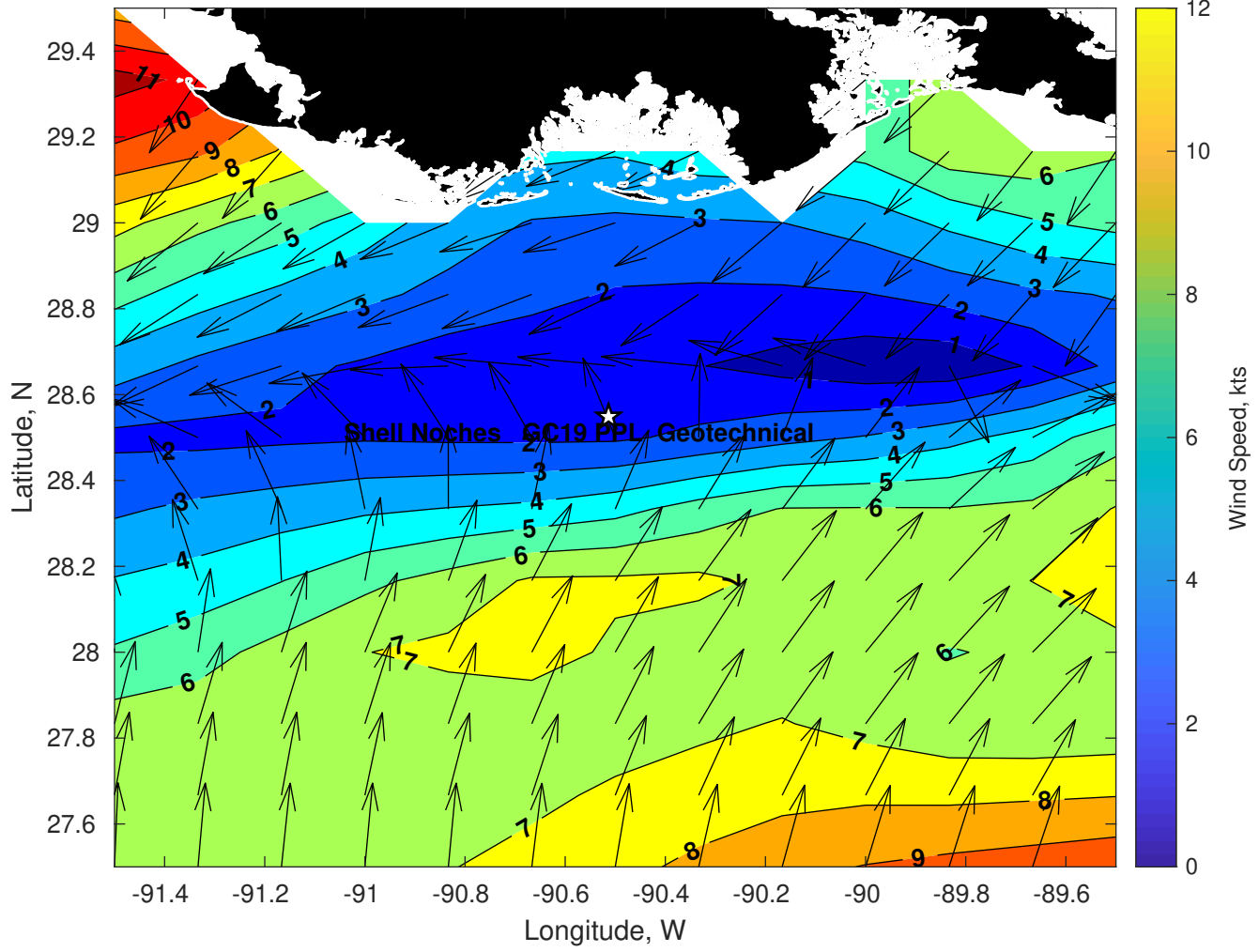
Wave Height (ft) for Shell Noches GC19 PPL Geotechnical at 01-Apr-2025 09:00:00



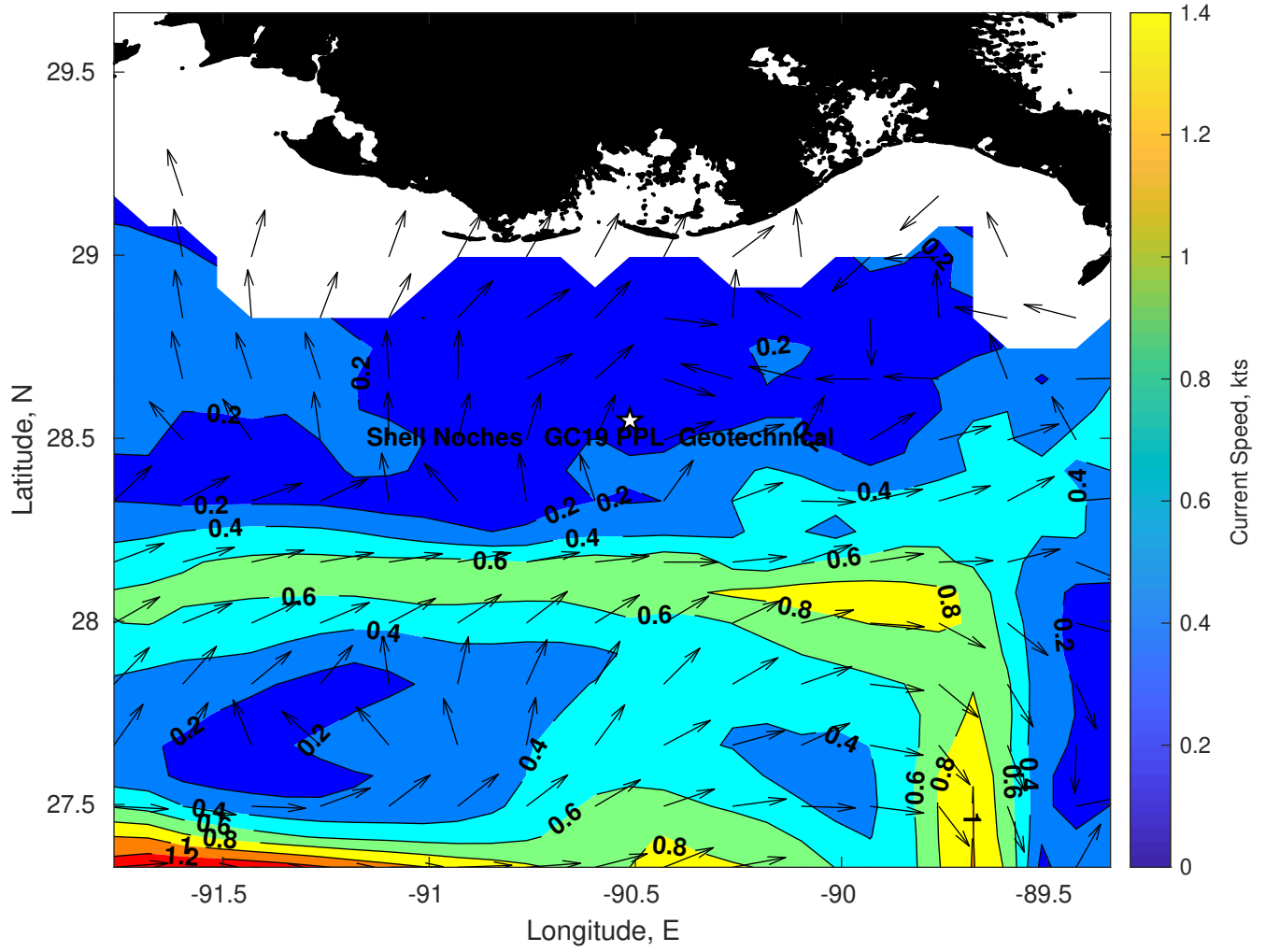
Wave Period (sec) for Shell Noches GC19 PPL Geotechnical at 01-Apr-2025 09:00:00



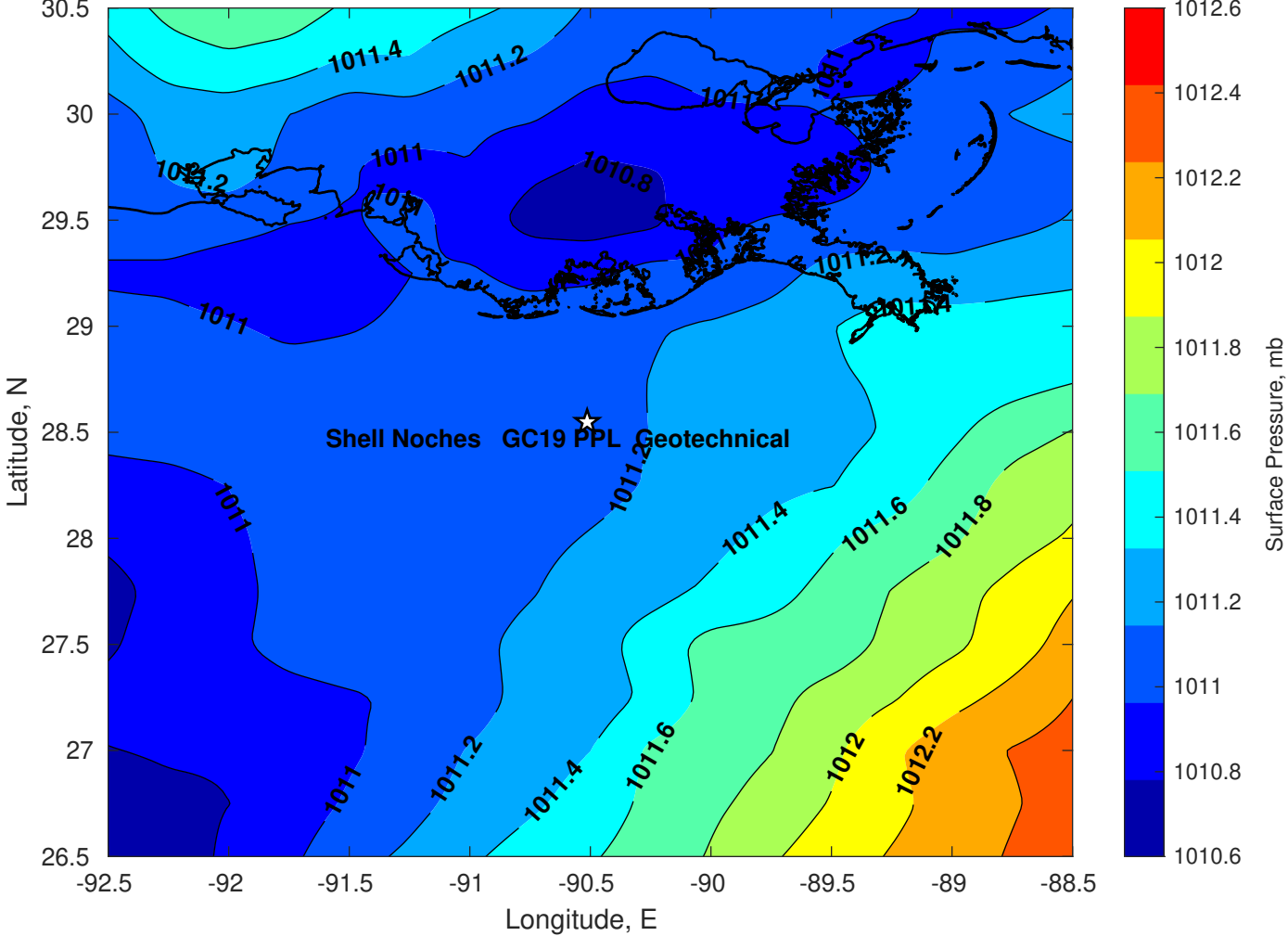
Winds (kts) for Shell Noches GC19 PPL Geotechnical at 01-Apr-2025 09:00:00



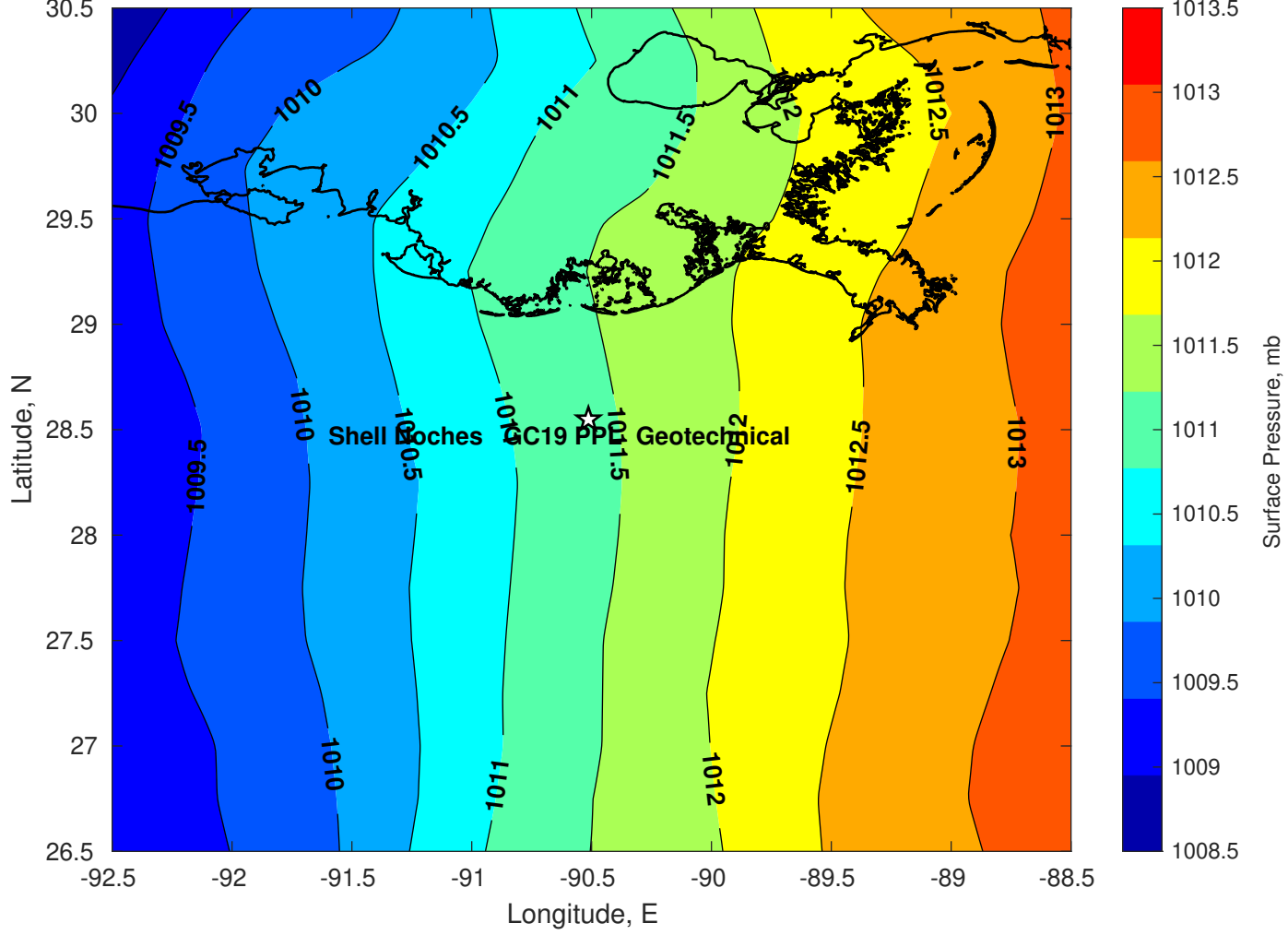
Surface Currents for Shell Noches GC19 PPL Geotechnical at 31-Mar-2025 00:00:00



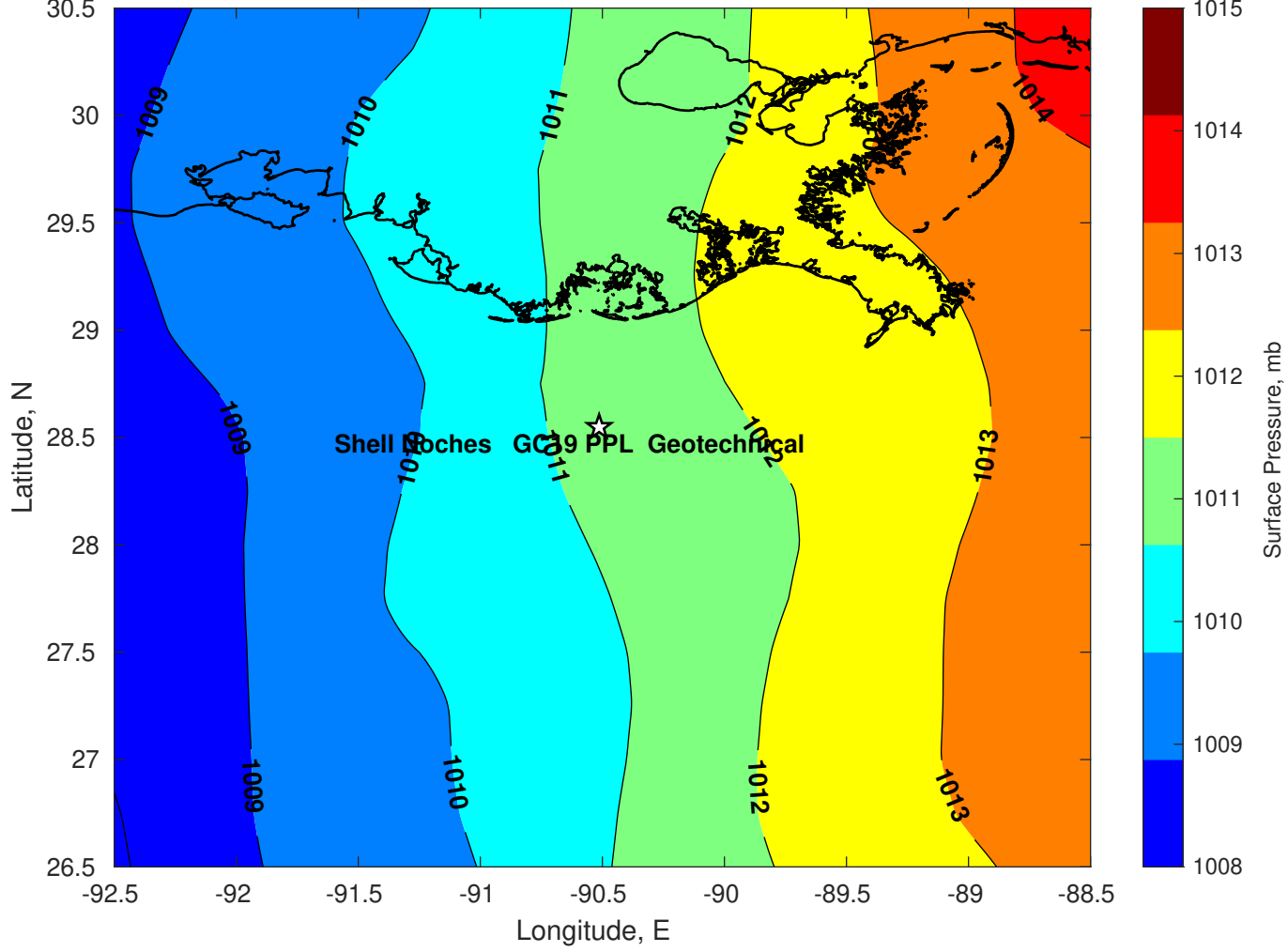
Surface Pressure (mb) for Shell Noches GC19 PPL Geotechnical at 01-Apr-2025 00:00:00



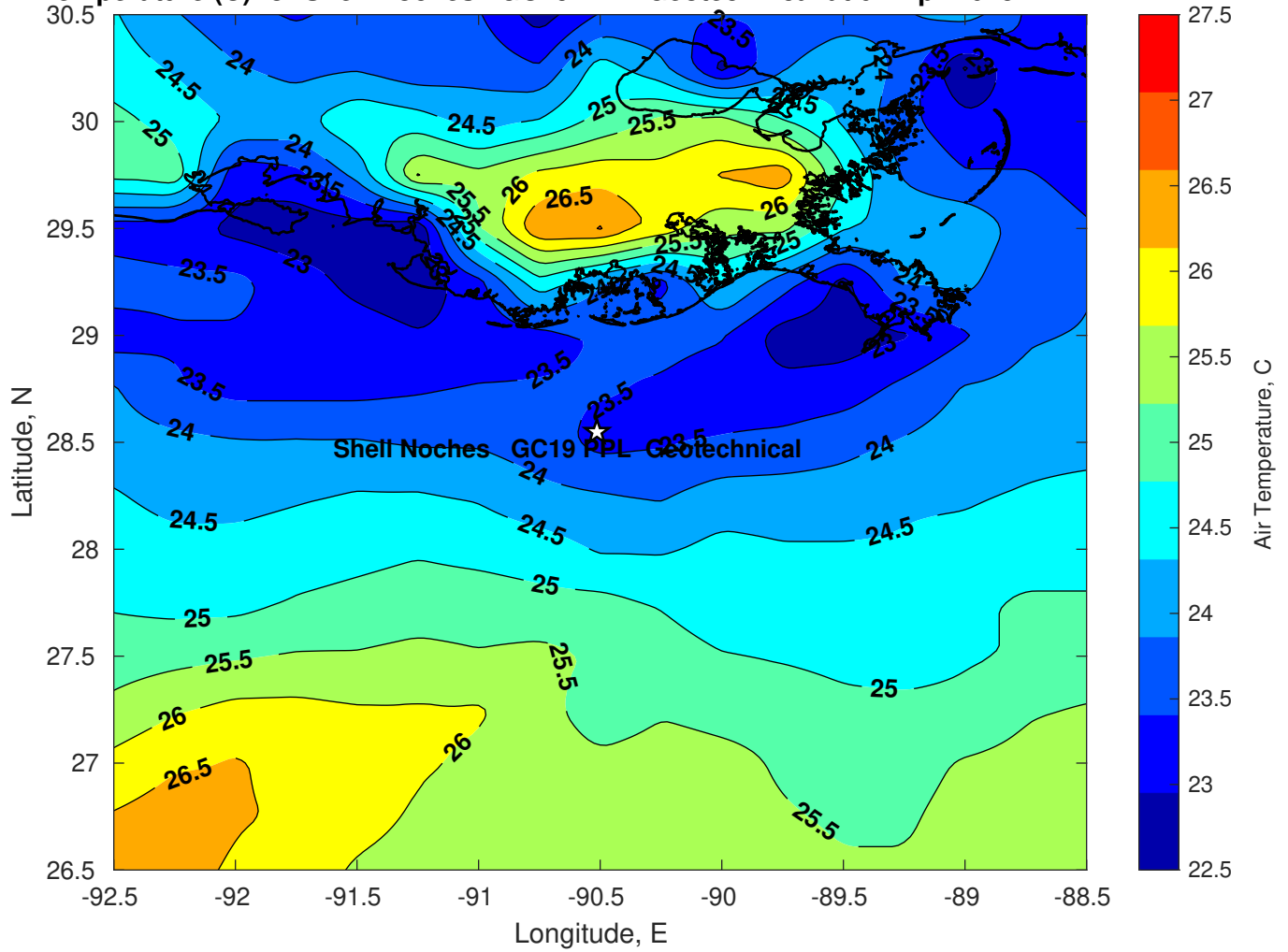
Surface Pressure (mb) for Shell Noches GC19 PPL Geotechnical at 02-Apr-2025 00:00:00



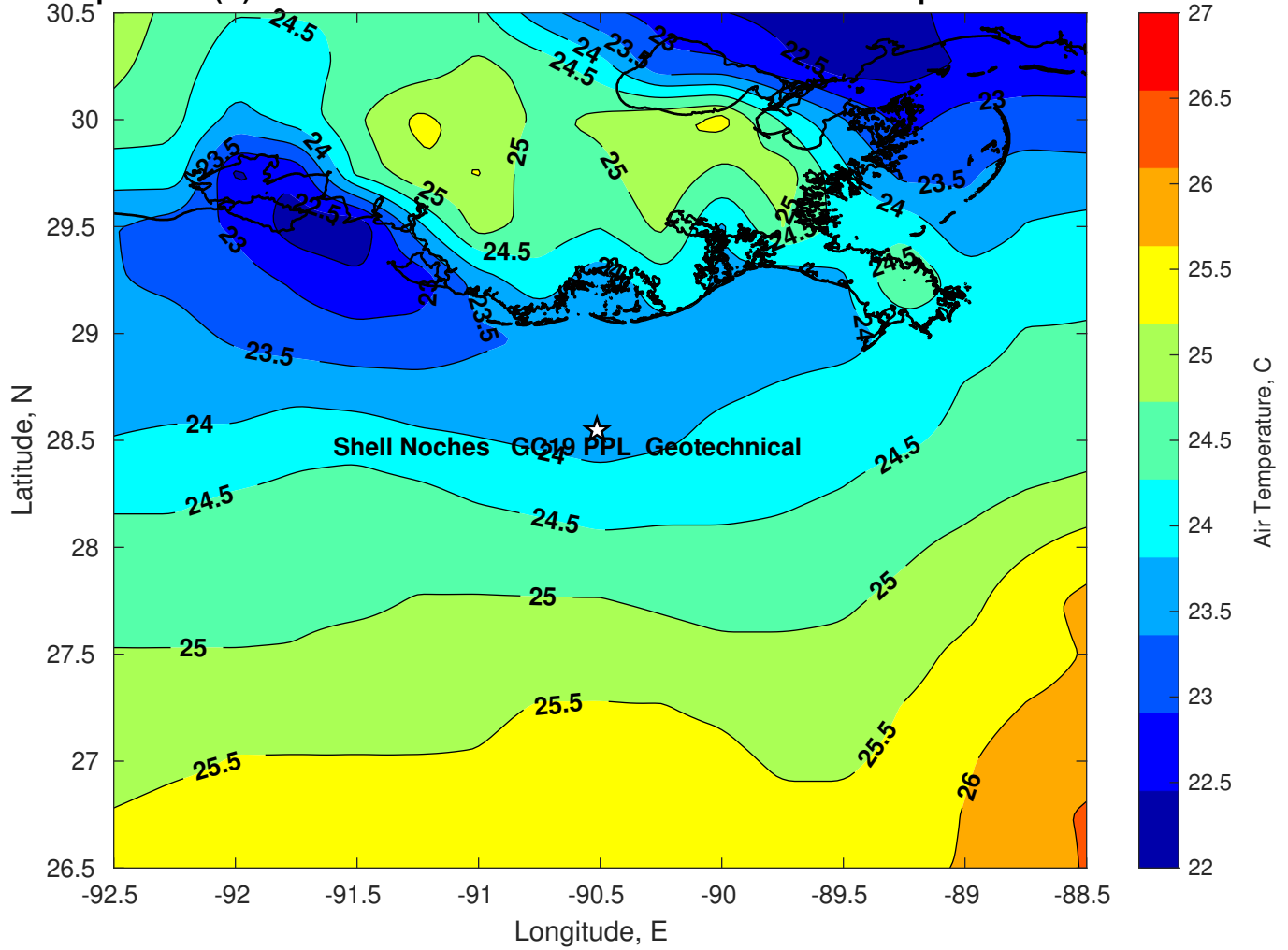
Surface Pressure (mb) for Shell Noches GC19 PPL Geotechnical at 03-Apr-2025 00:00:00



Air Temperature (C) for Shell Noches GC19 PPL Geotechnical at 01-Apr-2025



Air Temperature (C) for Shell Noches GC19 PPL Geotechnical at 01-Apr-2025



Air Temperature (C) for Shell Noches GC19 PPL Geotechnical at 01-Apr-2025

