
Marine Weather Forecast for CSA (ONHYM) PPL EBS - Cote d'Ivoire
Forecast valid as of 02-Apr-2025 0800 GMT

All times are local.

Today

Winds: N, 15-20 kts.
Waves: N, 5-6 feet, 15-16 sec.
No currents available.

Tonight

Winds: N, 10-15 kts.
Waves: N, 5-6 feet, 14-15 sec.
No currents available.

Thursday

Winds: N, 10-15 kts.
Waves: N, 4-5 feet, 14-15 sec.
No currents available.

Thursday Night

Winds: NW, 10-15 kts.
Waves: N, 3-4 feet, 13-14 sec.
No currents available.

Friday

Winds: N, 10-15 kts.
Waves: N, 3-4 feet, 13-14 sec.
No currents available.

Friday Night

Winds: NW, 15-20 kts.
Waves: N, 4-5 feet, 12-13 sec.
No currents available.

Saturday

Winds: NW, 10-15 kts.
Waves: N, 4-5 feet, 11-12 sec.
No currents available.

Saturday Night

Winds: N, 10-15 kts.
Waves: N, 4-5 feet, 9-10 sec.
No currents available.

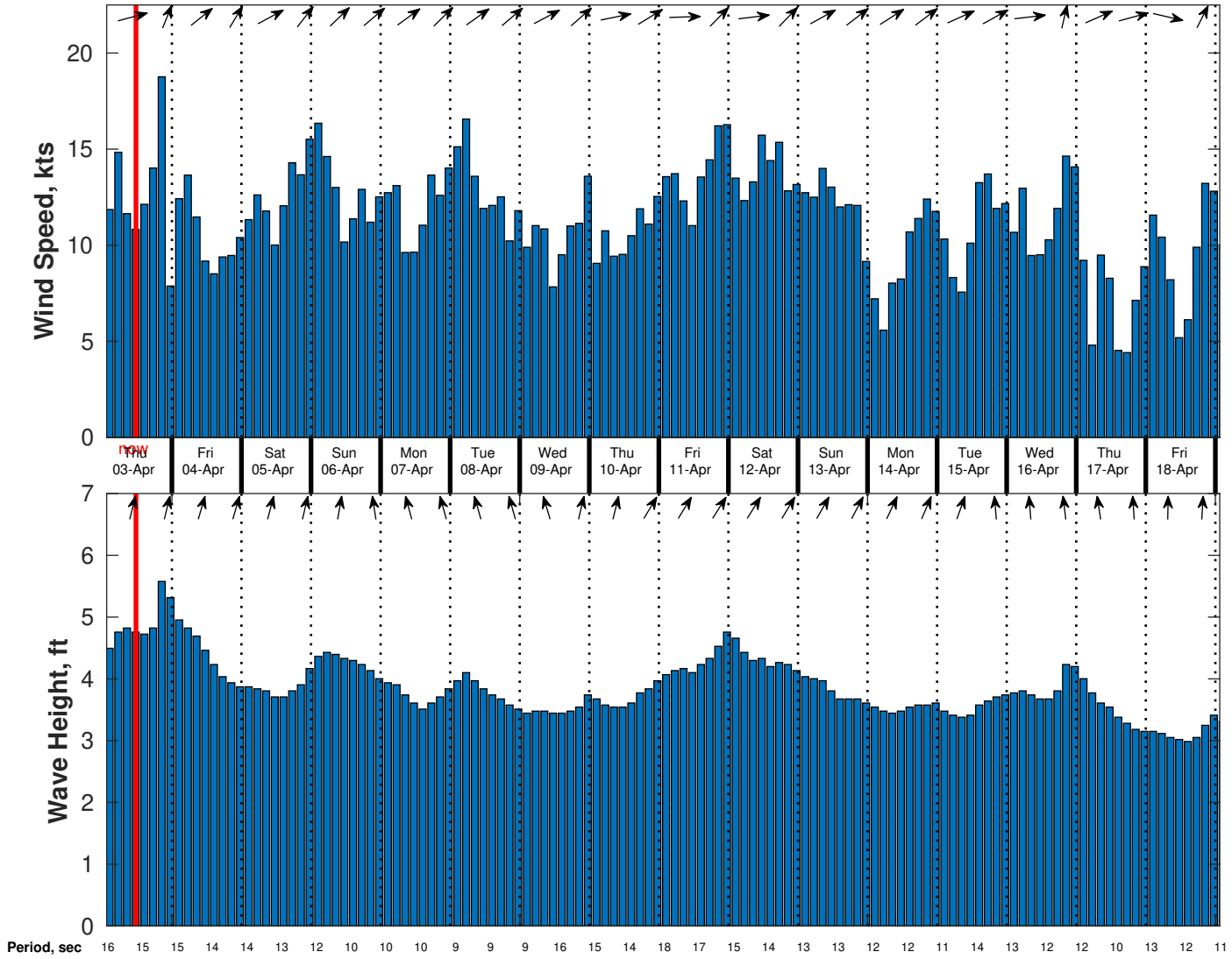
Sunday

Winds: NW, 10-15 kts.
Waves: N, 3-4 feet, 9-10 sec.
No currents available.

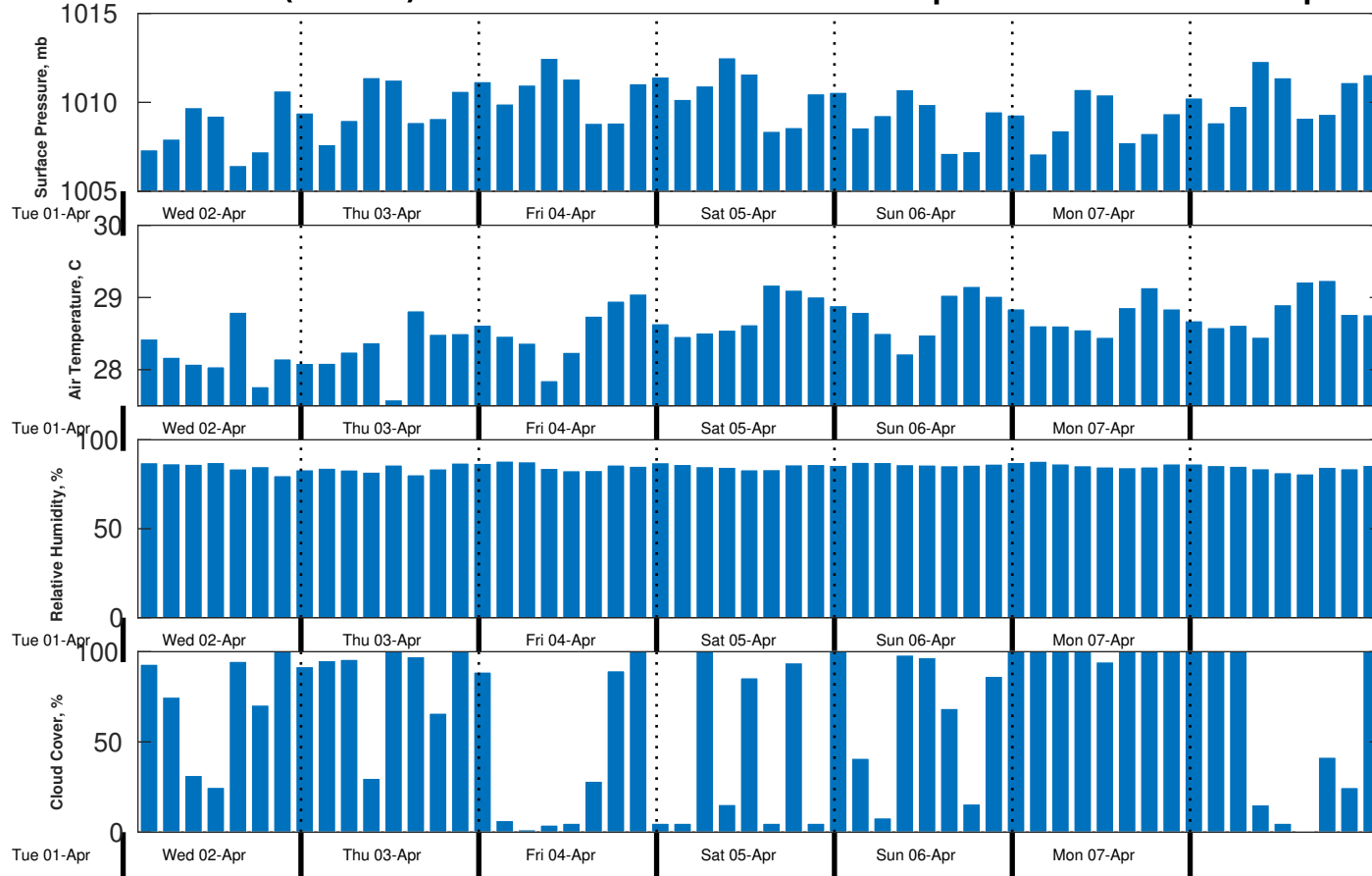
Sunday Night

Winds: NW, 15-20 kts.
Waves: N, 4-5 feet, 9-10 sec.
No currents available.

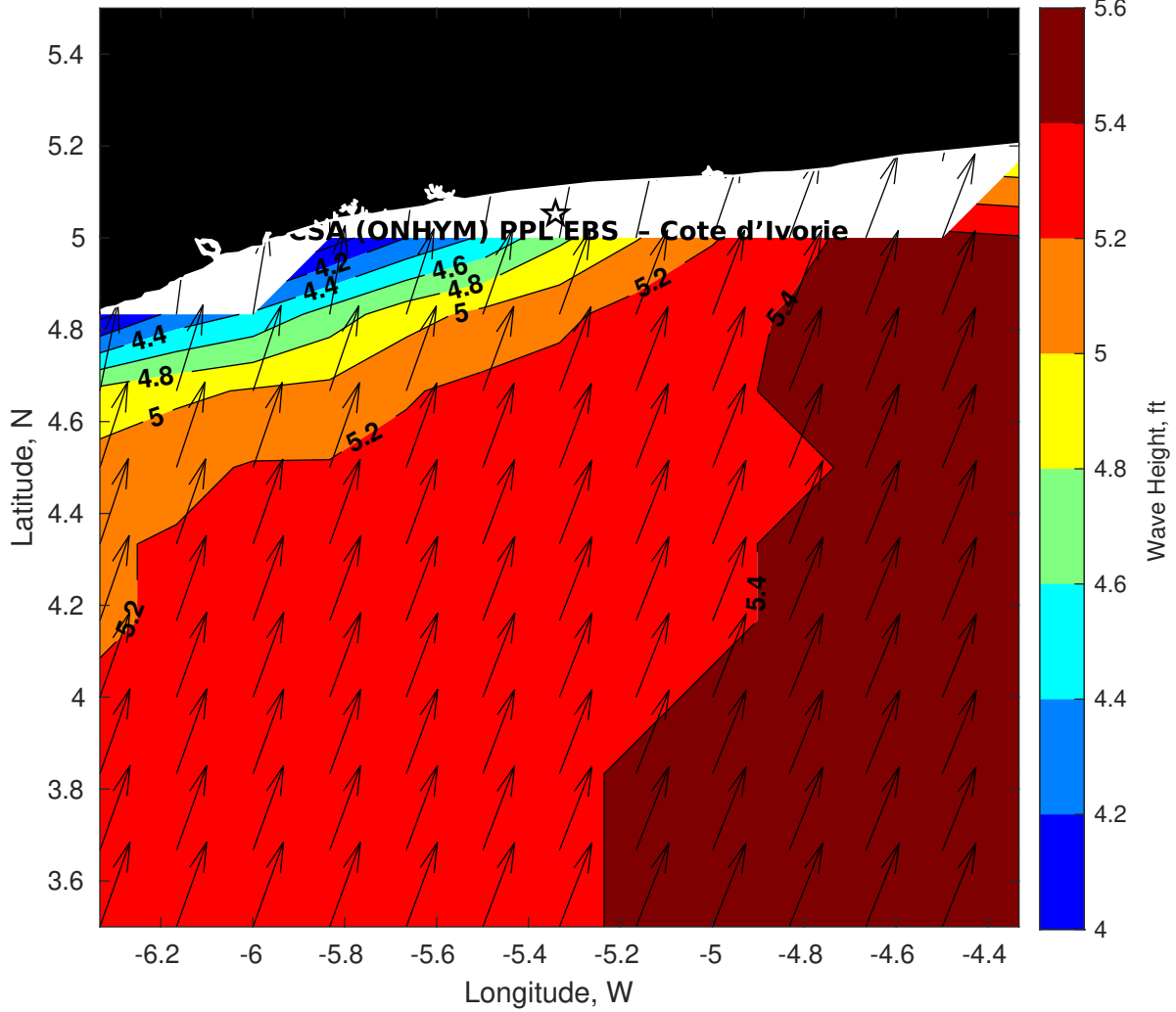
Wind & Wave Forecast for CSA (ONHYM) PPL EBS - Cote d'Ivoire from 02-Apr-2025 01:00:00 to 18-Apr-2025 01:00:00



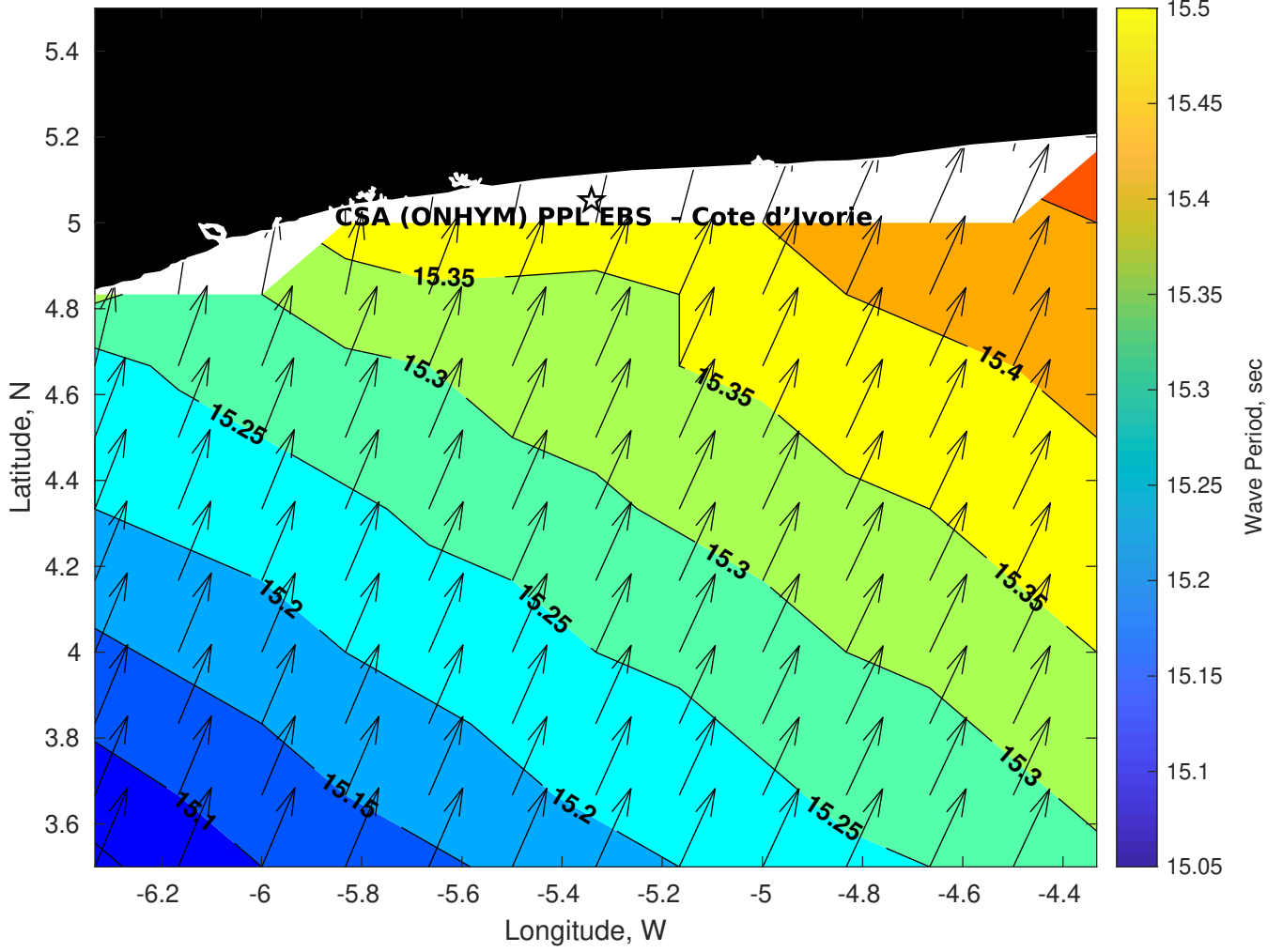
Met Forecast for CSA (ONHYM) PPL EBS - Cote d'Ivoire from 02-Apr-2025 00:00:00 to 09-Apr-2025 00:00:00



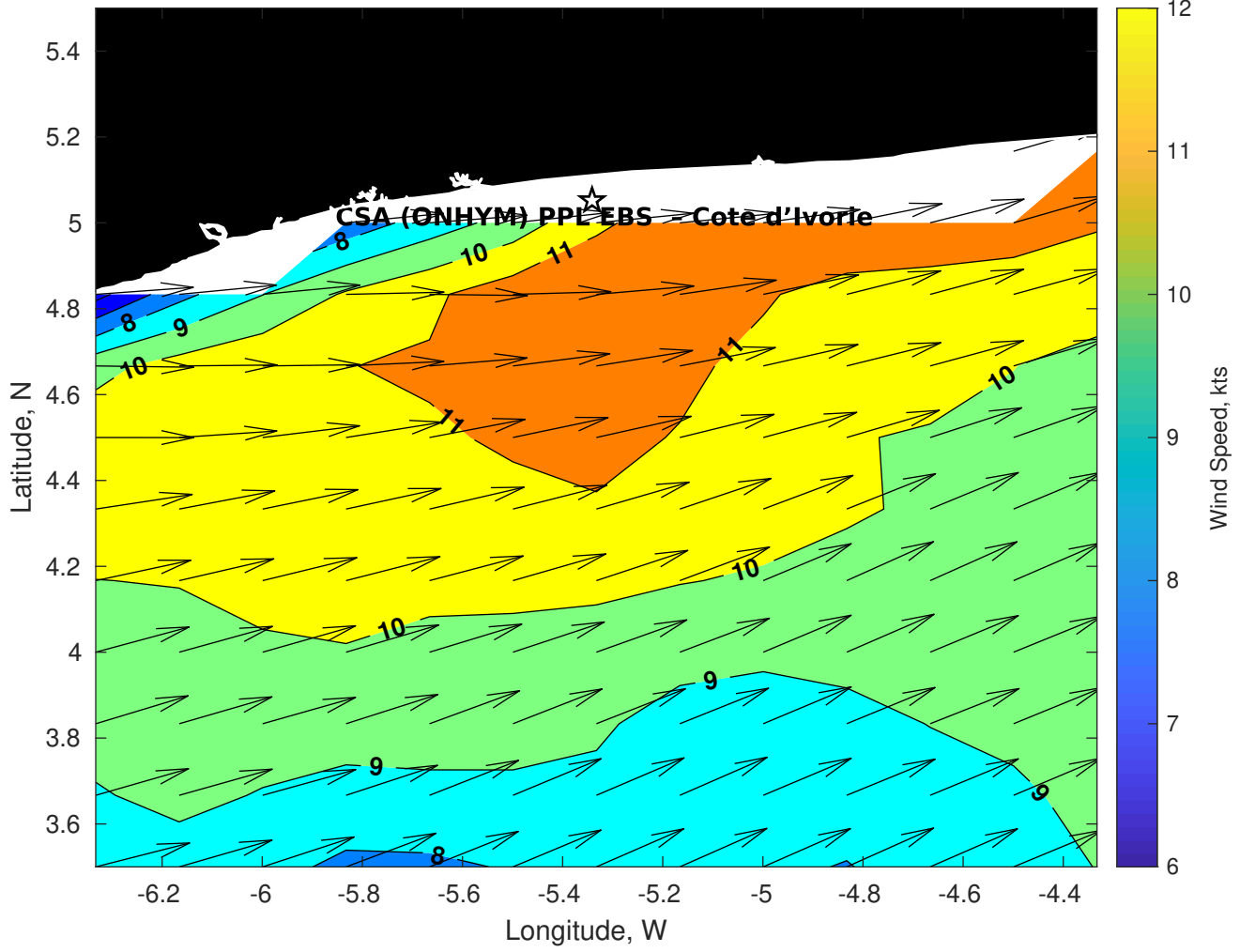
Wave Height (ft) for CSA (ONHYM) PPL EBS - Cote d'Ivoire at 02-Apr-2025 09:00:00



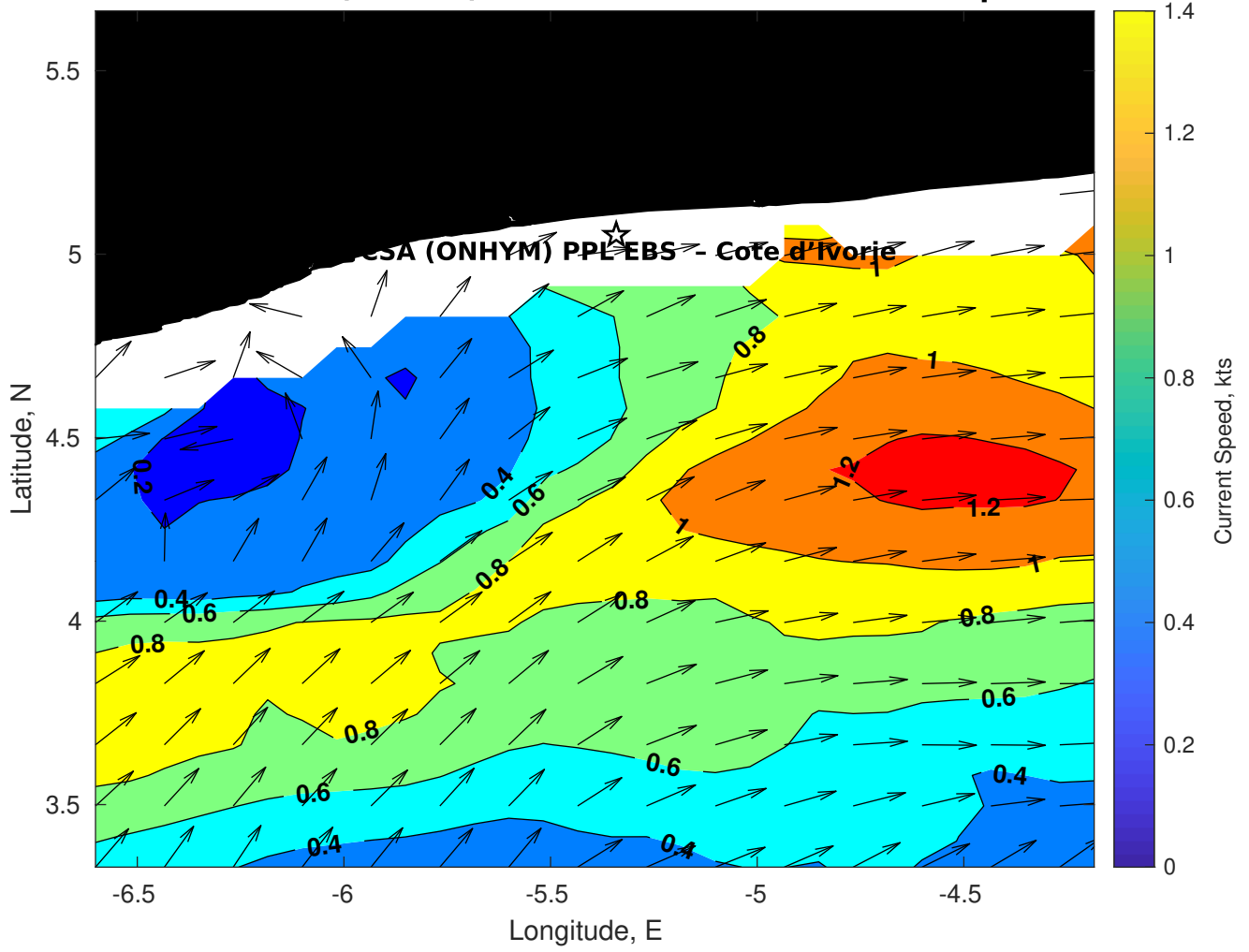
Wave Period (sec) for CSA (ONHYM) PPL EBS - Cote d'Ivoire at 02-Apr-2025 09:00:00



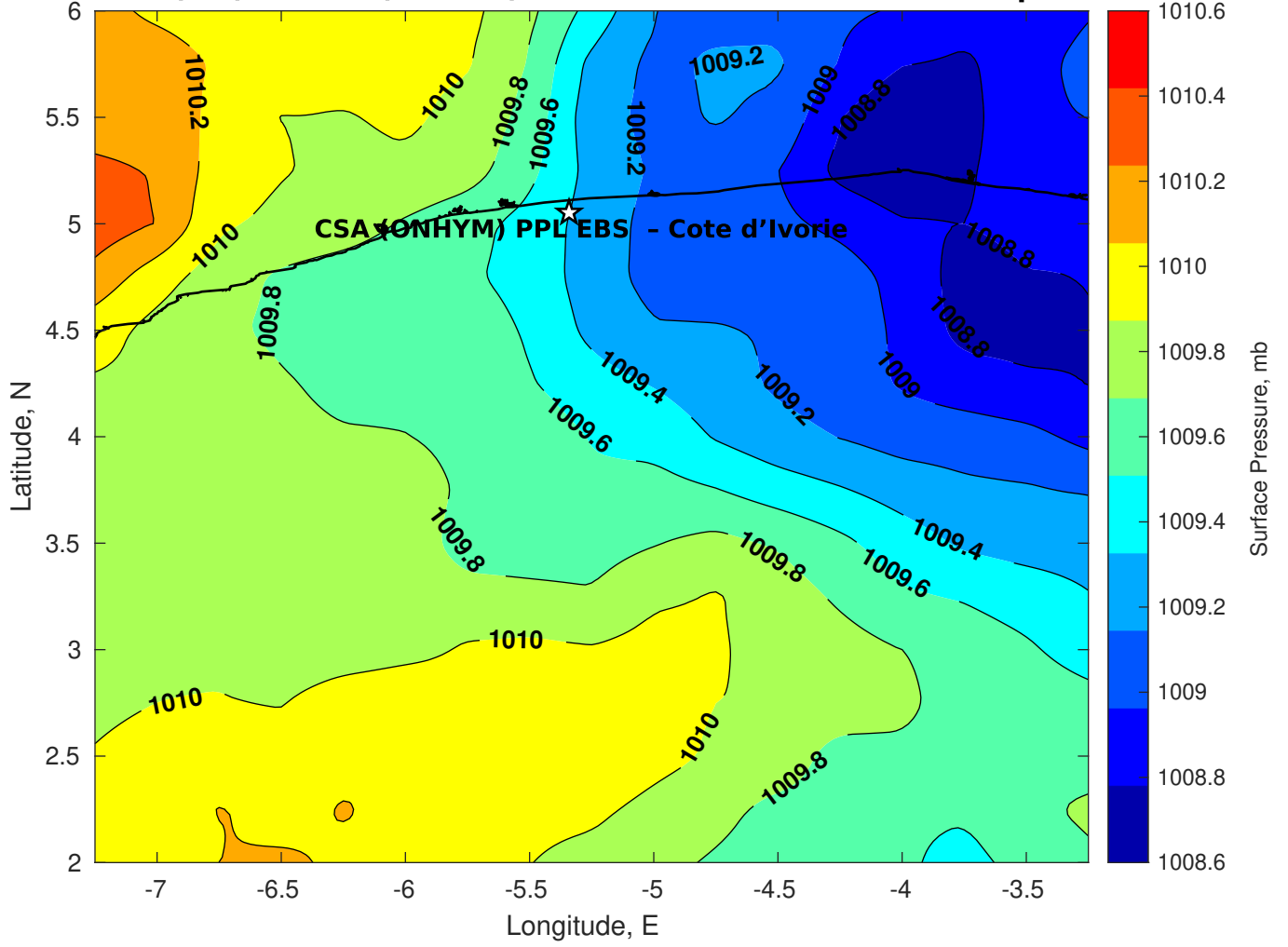
Winds (kts) for CSA (ONHYM) PPL EBS - Cote d'Ivoire at 02-Apr-2025 09:00:00



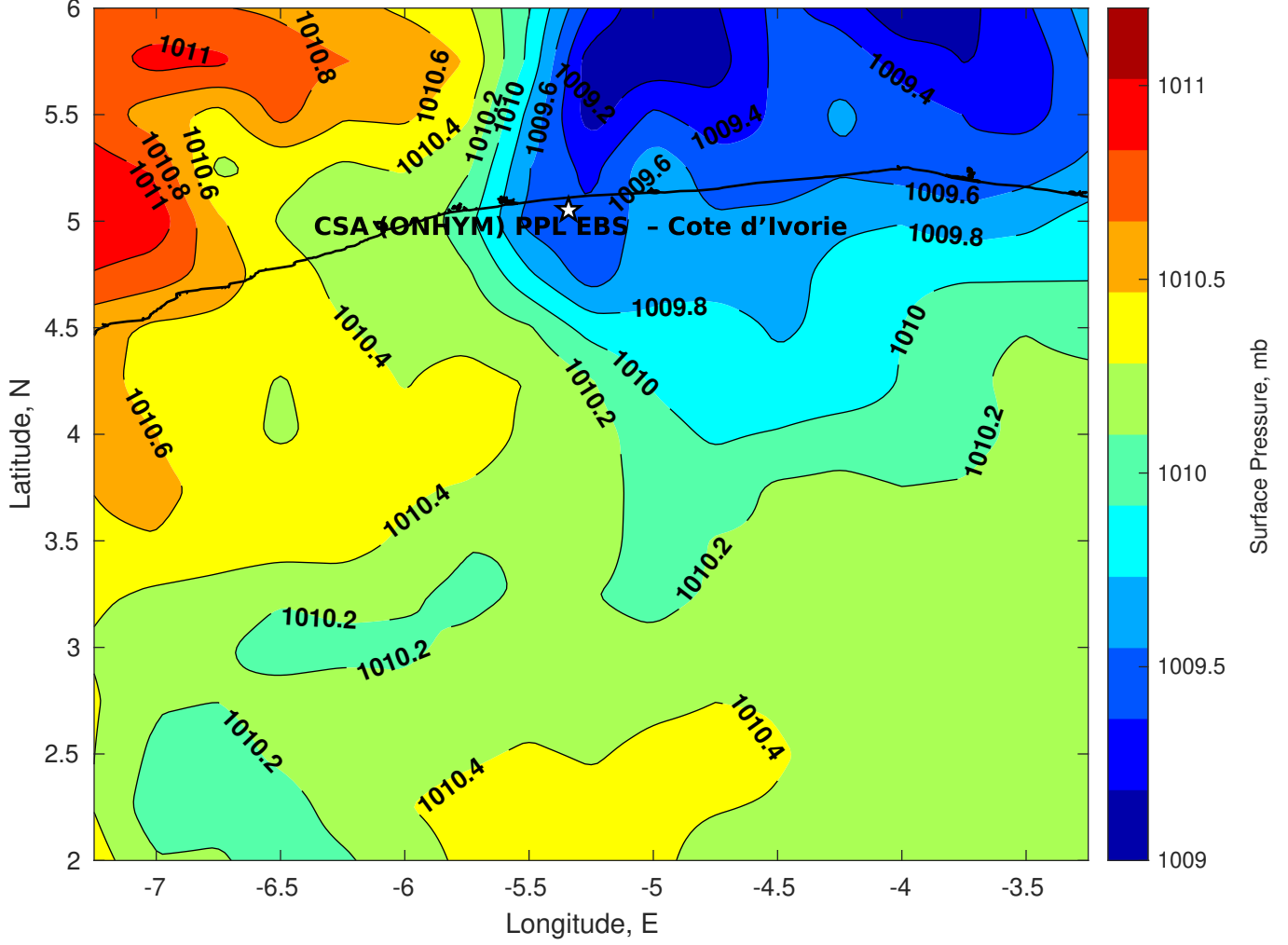
Surface Currents for CSA (ONHYM) PPL EBS - Cote d'Ivoire at 01-Apr-2025 00:00:00



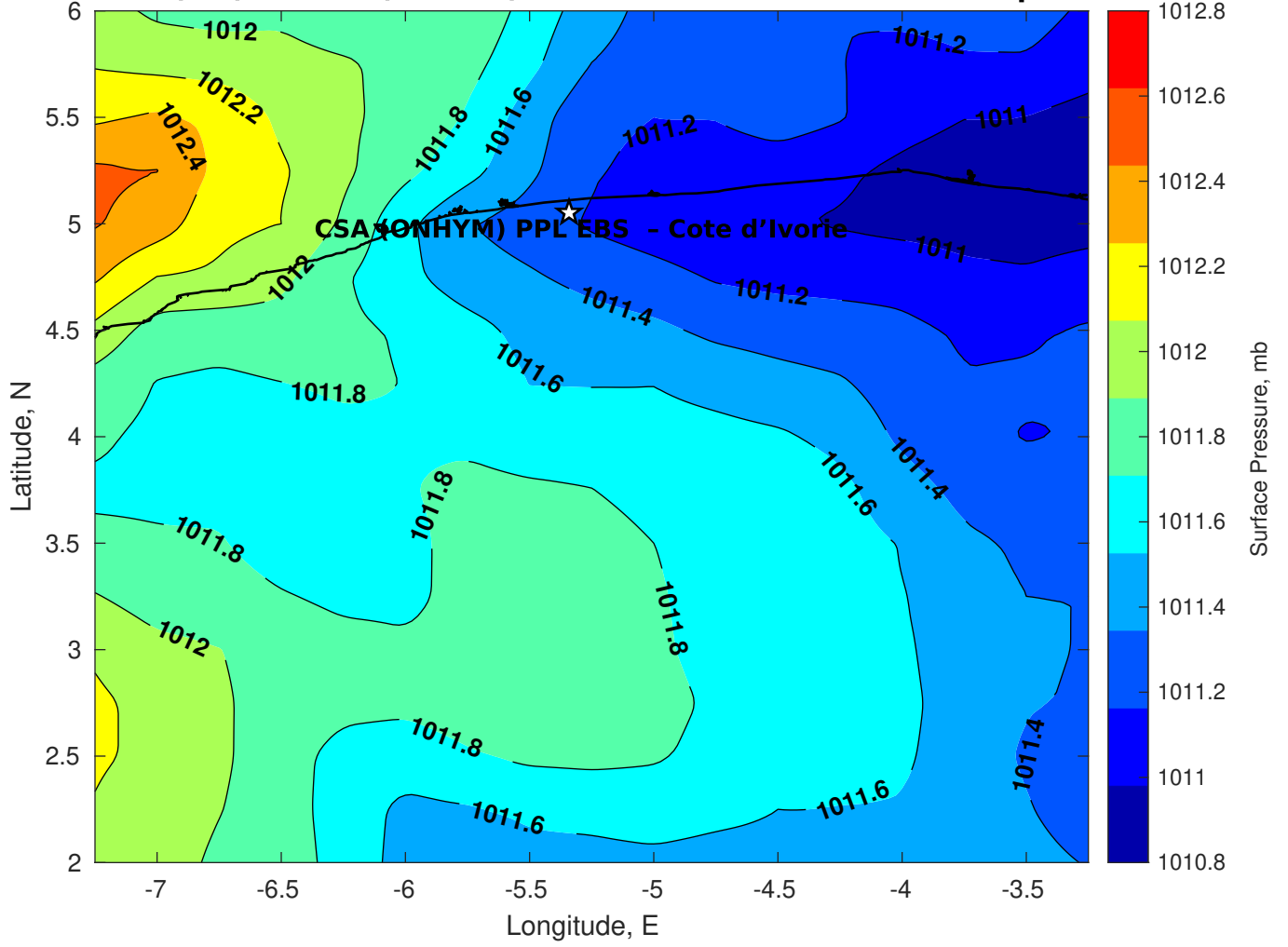
Surface Pressure (mb) for CSA (ONHYM) PPL EBS - Cote d'Ivoire at 02-Apr-2025 00:00:00



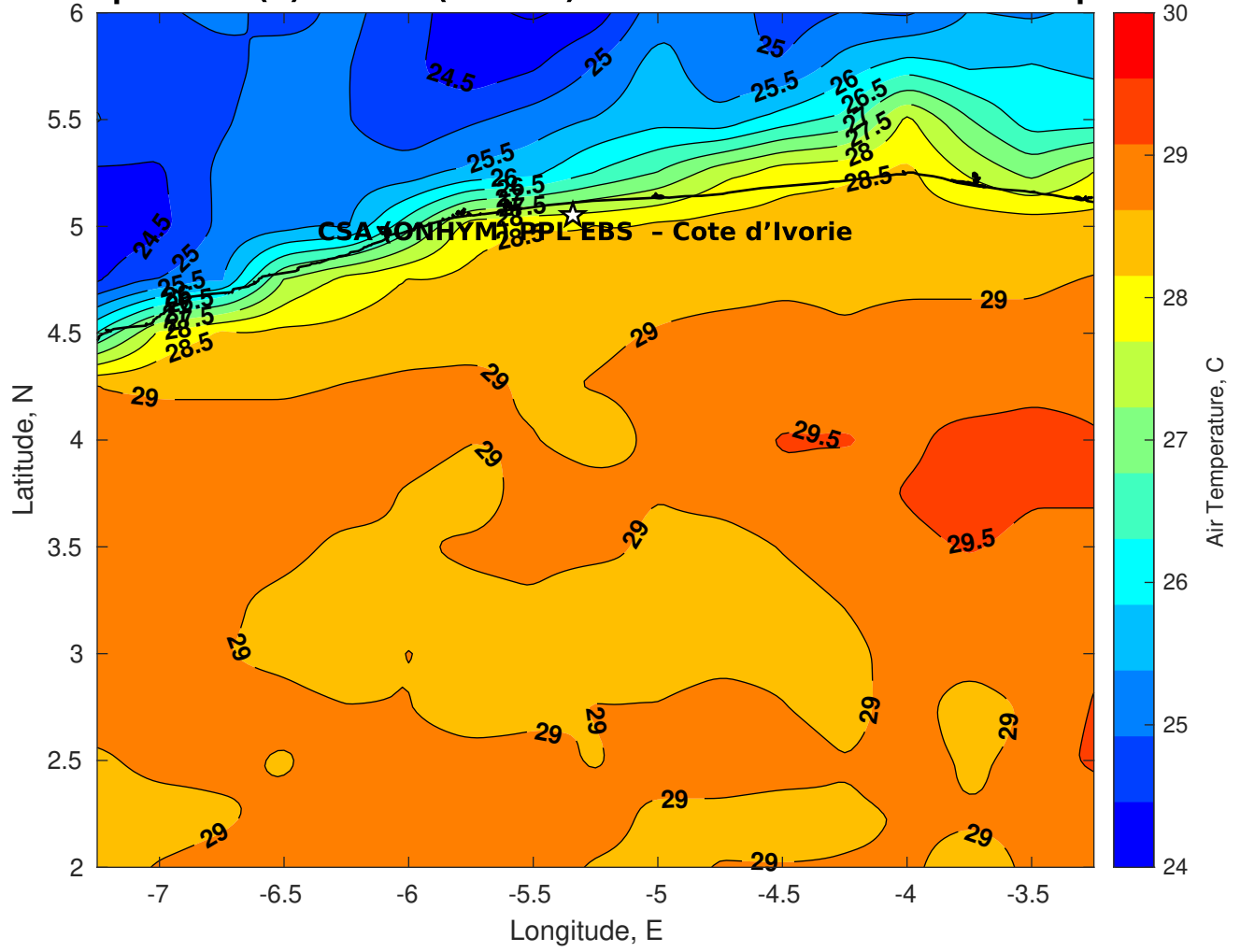
Surface Pressure (mb) for CSA (ONHYM) PPL EBS - Cote d'Ivoire at 03-Apr-2025 00:00:00



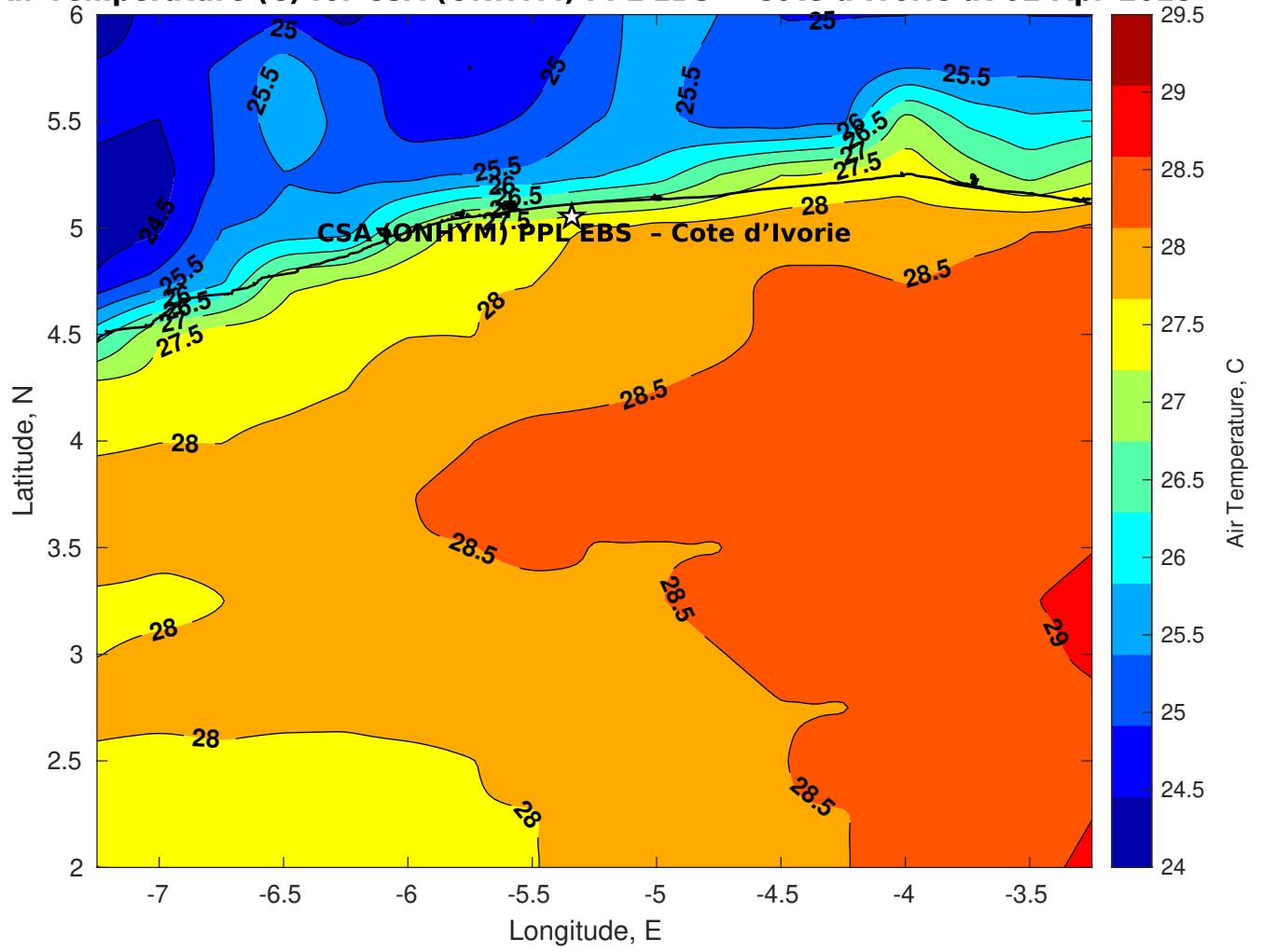
Surface Pressure (mb) for CSA (ONHYM) PPL EBS - Cote d'Ivoire at 04-Apr-2025 00:00:00



Air Temperature (C) for CSA (ONHYM) PPL EBS - Cote d'Ivoire at 02-Apr-2025



Air Temperature (C) for CSA (ONHYM) PPL EBS - Cote d'Ivoire at 02-Apr-2025



Air Temperature (C) for CSA (ONHYM) PPL EBS - Cote d'Ivoire at 02-Apr-2025

