

\*\*\*\*\*

Marine Weather Forecast for CSA (ONHYM) PPL EBS - Guinea

Forecast valid as of 02-Apr-2025 0800 GMT

\*\*\*\*\*

All times are local.

Today

Winds: NW, 5-10 kts.

Waves: NW, 1-2 feet, 15-16 sec.

No currents available.

Tonight

Winds: NW, 10-15 kts.

Waves: NW, 1-2 feet, 15-16 sec.

No currents available.

Thursday

Winds: NW, 10-15 kts.

Waves: NW, 1-2 feet, 14-15 sec.

No currents available.

Thursday Night

Winds: NW, 10-15 kts.

Waves: NW, 1-2 feet, 13-14 sec.

No currents available.

Friday

Winds: NW, 10-15 kts.

Waves: NW, 1-2 feet, 13-14 sec.

No currents available.

Friday Night

Winds: W, 5-10 kts.

Waves: NW, 1-2 feet, 12-13 sec.

No currents available.

Saturday

Winds: N, 10-15 kts.

Waves: NW, 1-2 feet, 12-13 sec.

No currents available.

Saturday Night

Winds: NW, 5-10 kts.

Waves: NW, 1-2 feet, 11-12 sec.

No currents available.

Sunday

Winds: N, 10-15 kts.

Waves: NW, 1-2 feet, 11-12 sec.

No currents available.

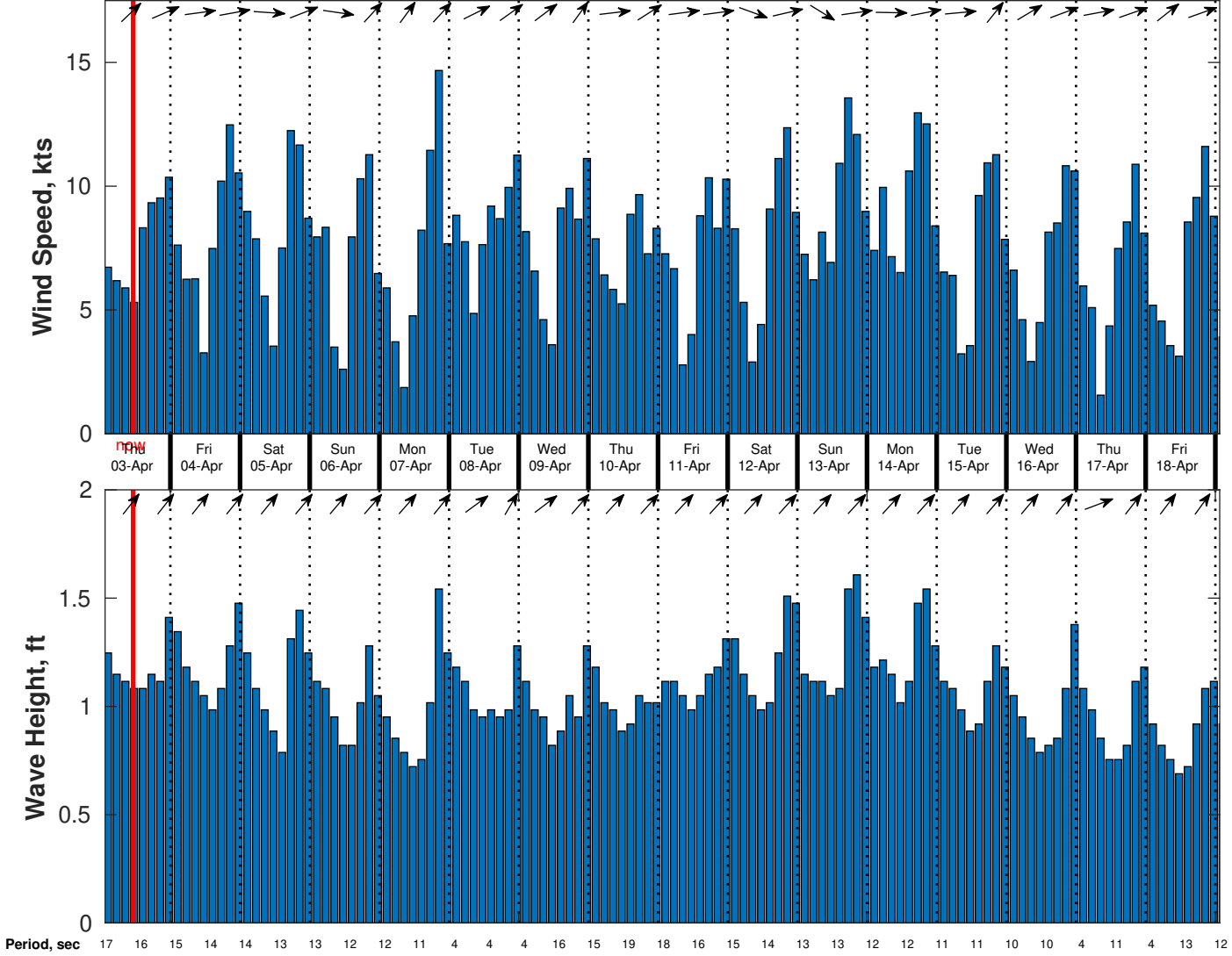
Sunday Night

Winds: NW, 5-10 kts.

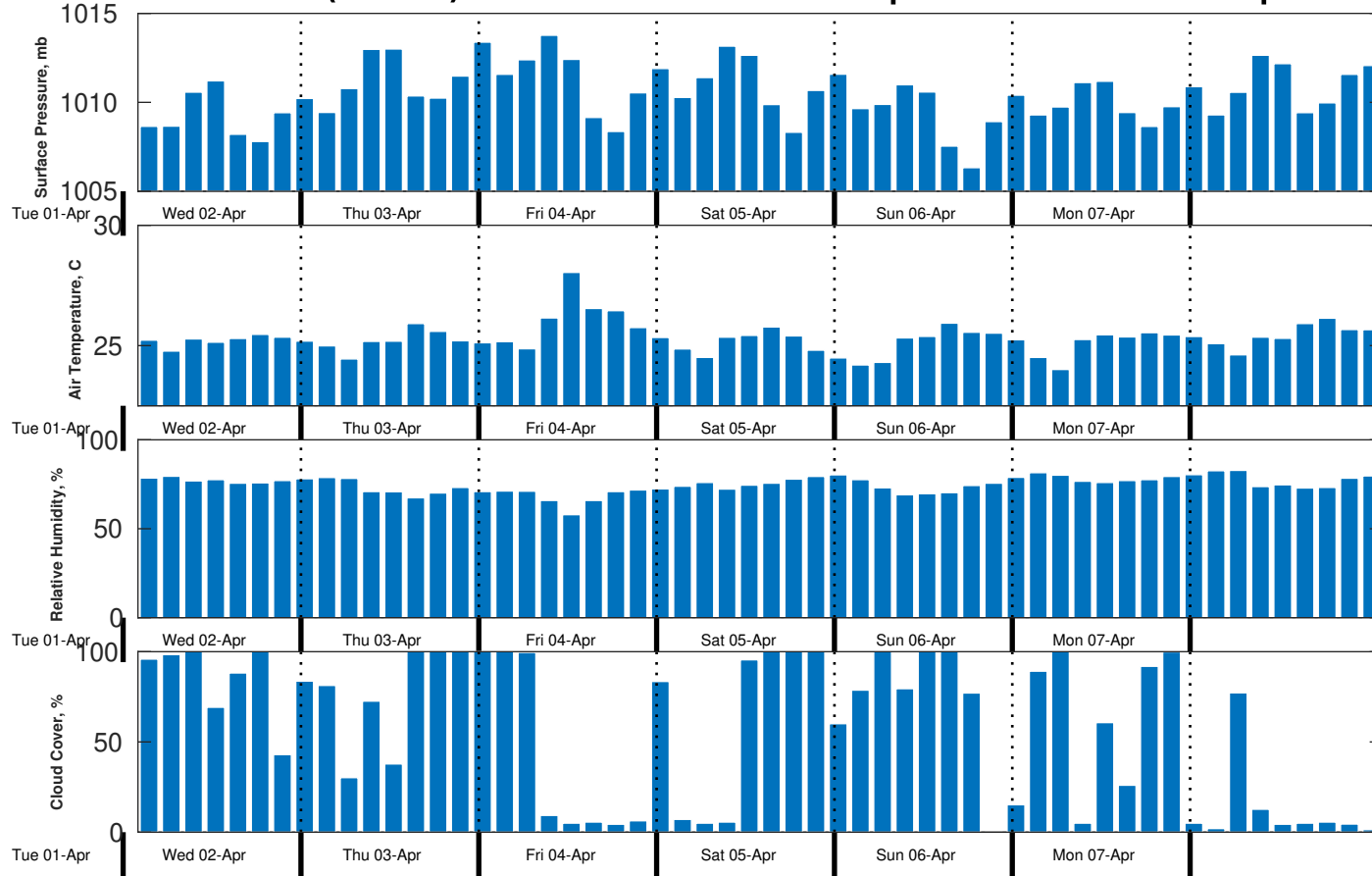
Waves: NW, 1-2 feet, 4-5 sec.

No currents available.

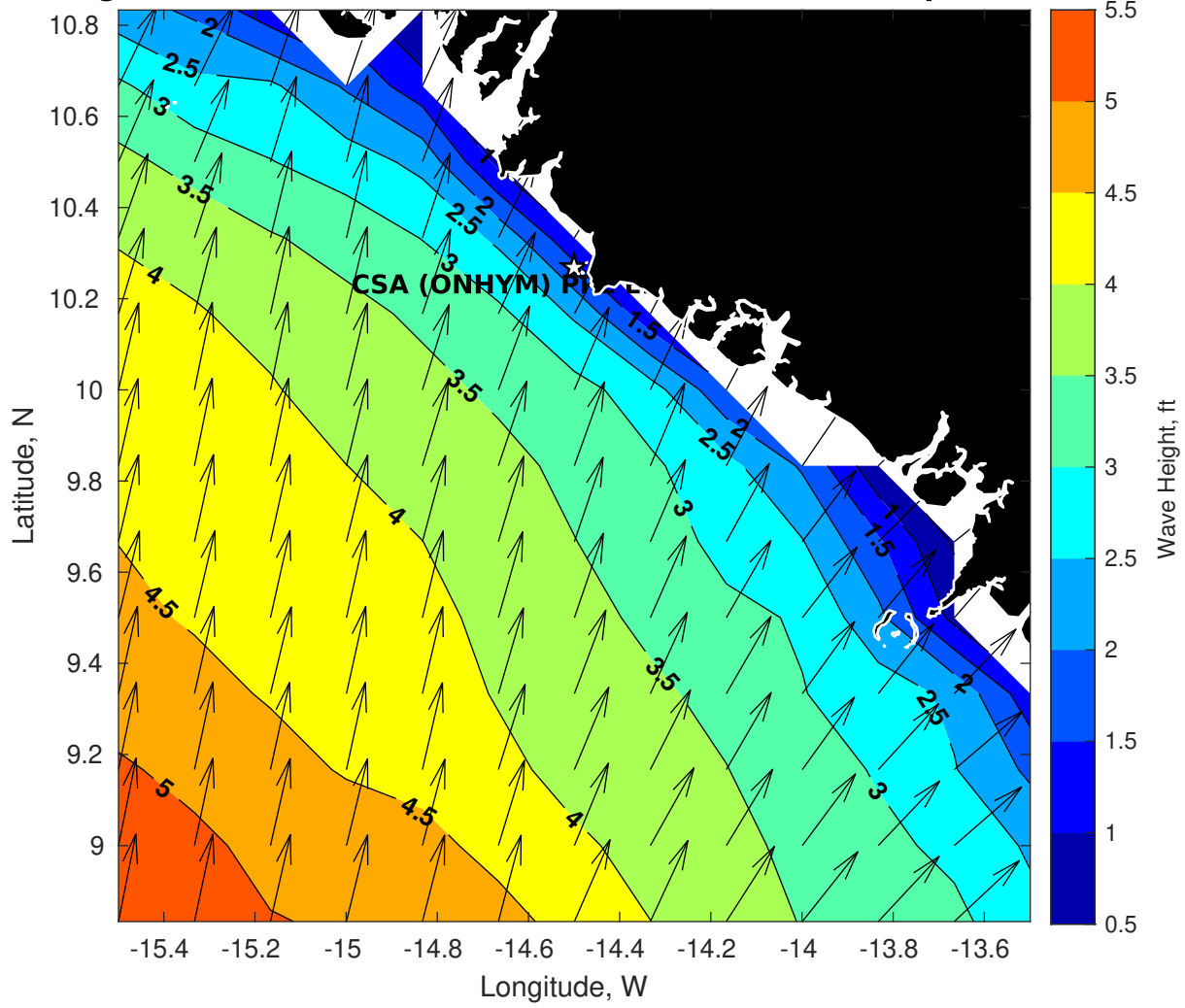
**Wind & Wave Forecast for CSA (ONHYM) PPL EBS - Guinea from 02-Apr-2025 01:00:00 to 18-Apr-2025 01:00:00**



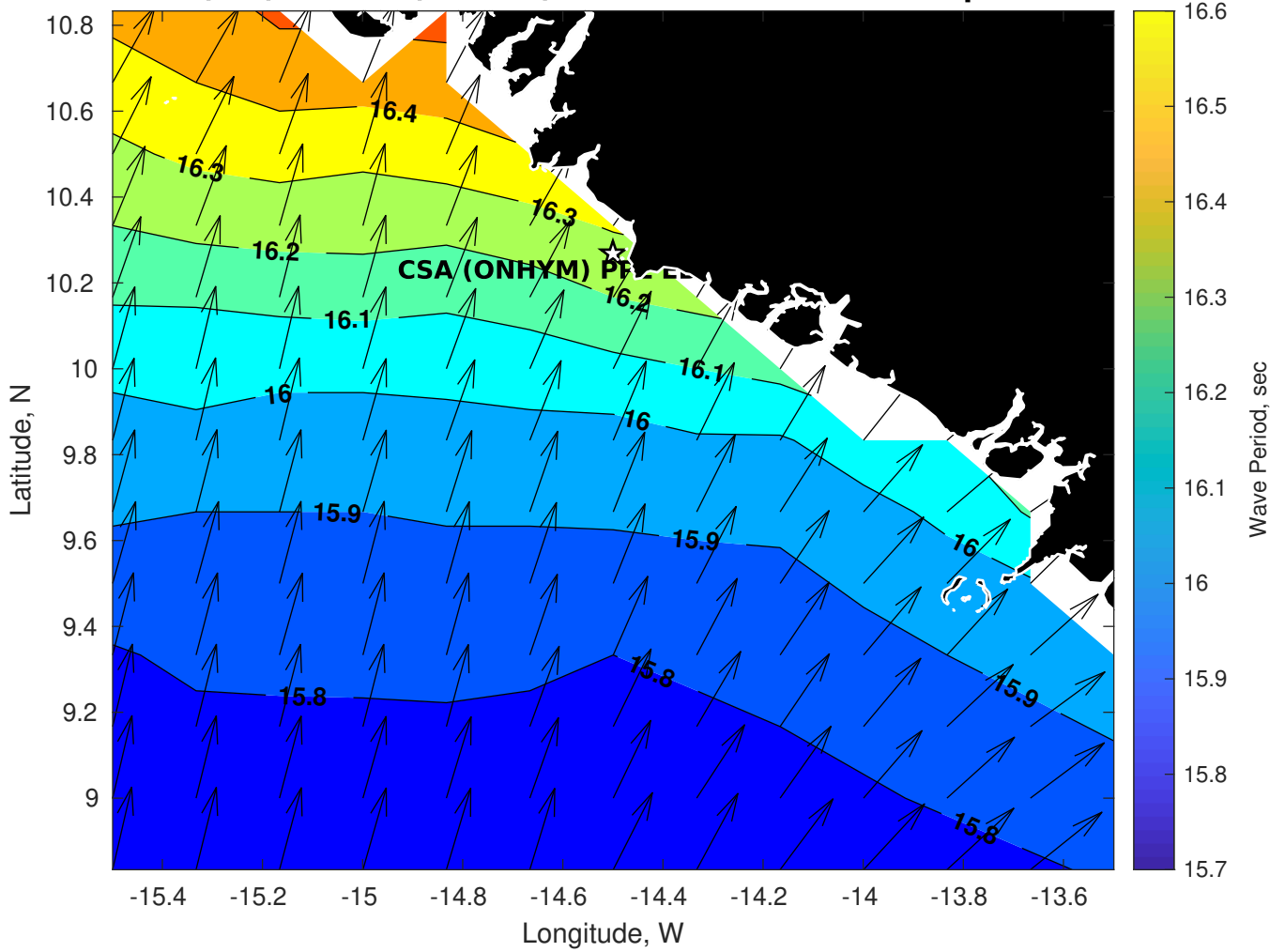
**Met Forecast for CSA (ONHYM) PPL EBS - Guinea from 02-Apr-2025 00:00:00 to 09-Apr-2025 00:00:00**



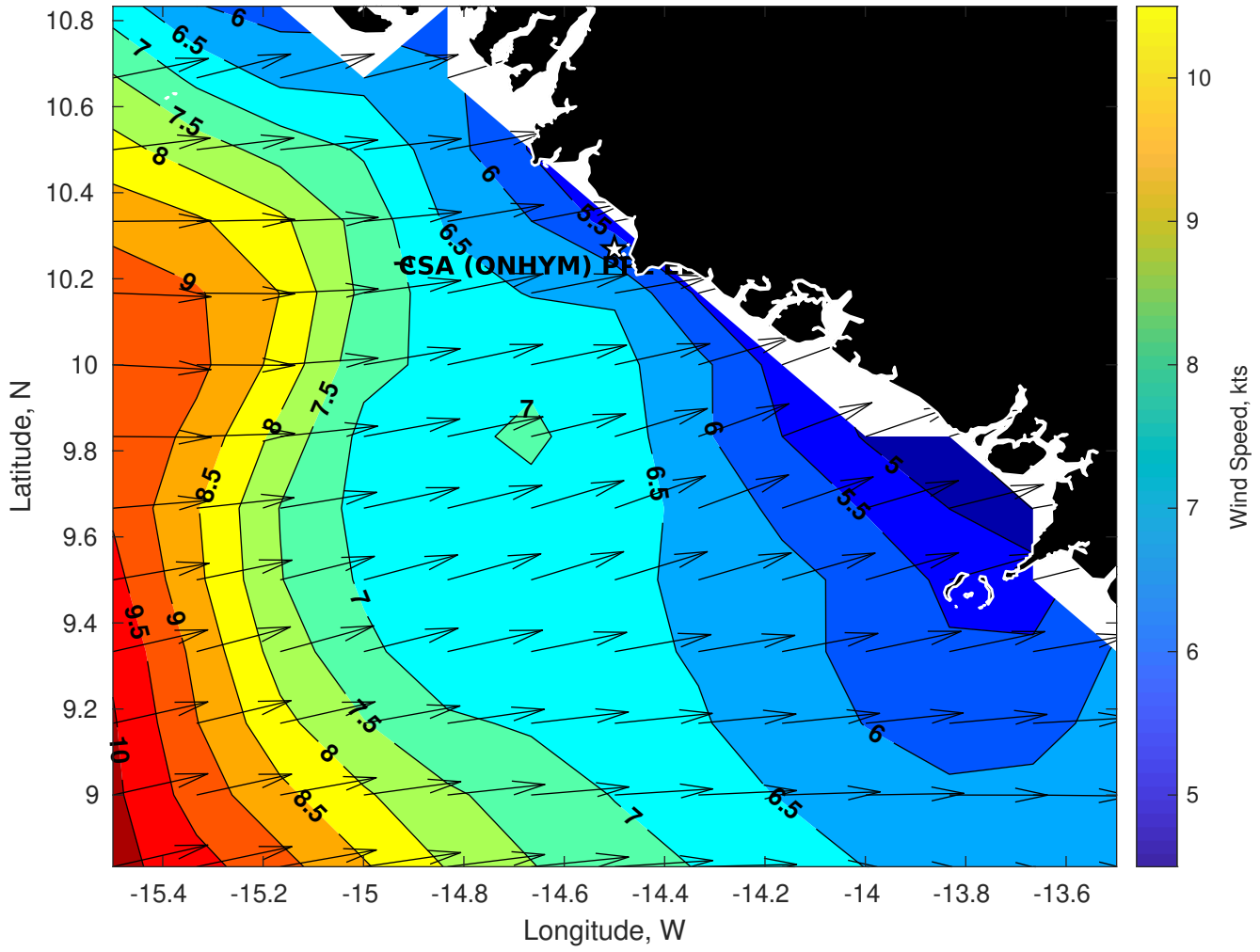
### Wave Height (ft) for CSA (ONHYM) PPL EBS - Guinea at 02-Apr-2025 09:00:00



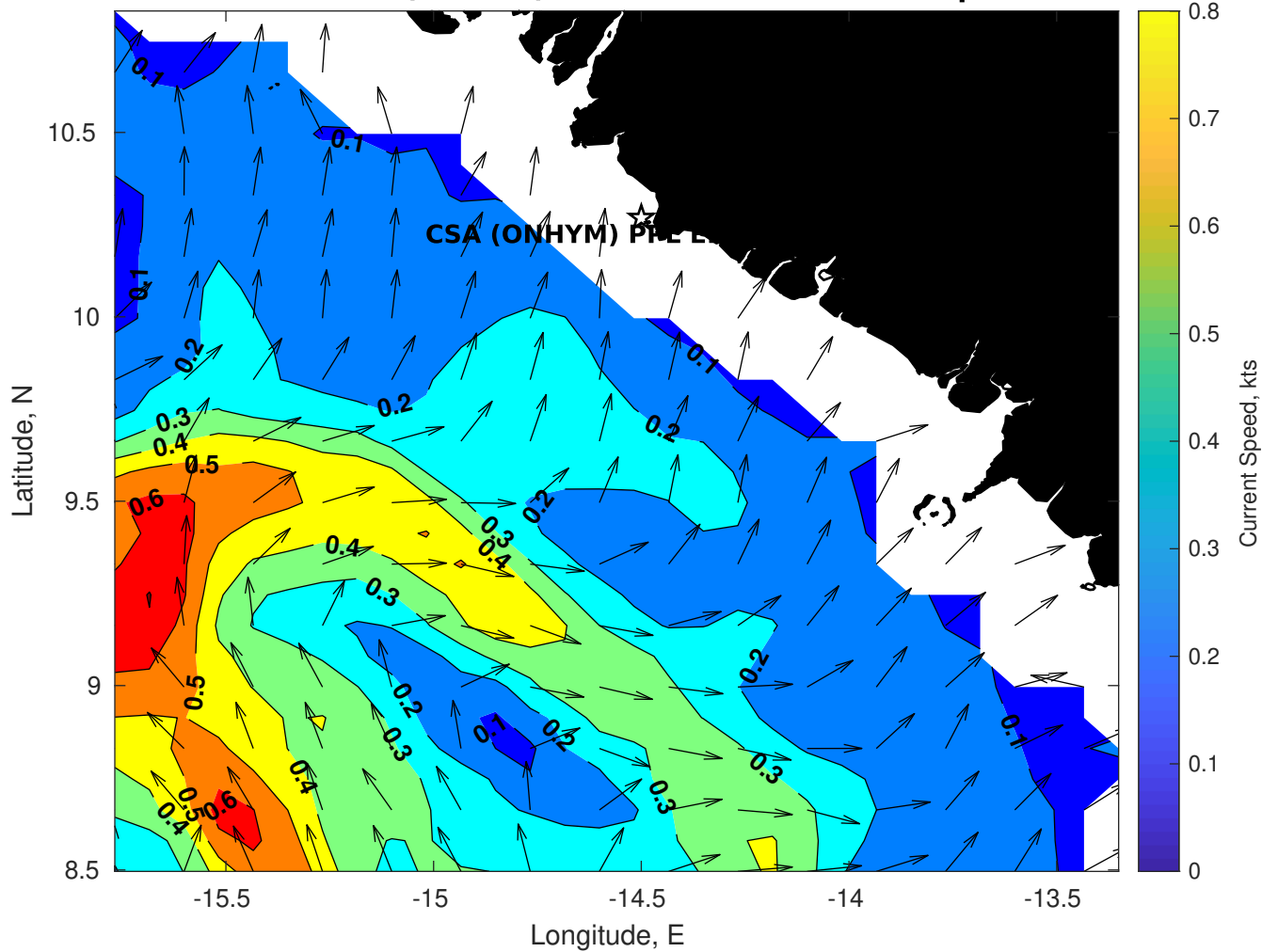
**Wave Period (sec) for CSA (ONHYM) PPL EBS - Guinea at 02-Apr-2025 09:00:00**



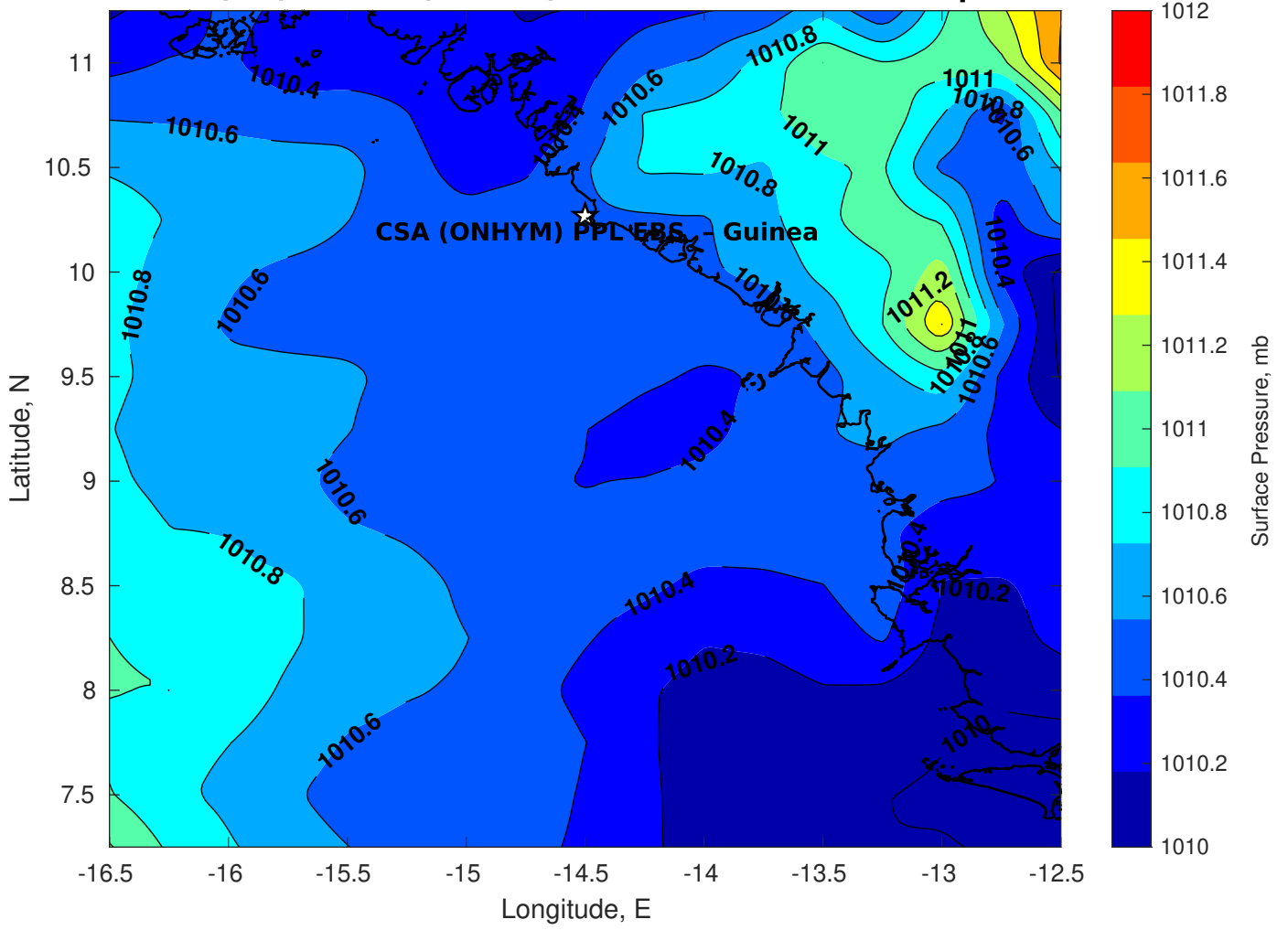
**Winds (kts) for CSA (ONHYM) PPL EBS - Guinea at 02-Apr-2025 09:00:00**



### Surface Currents for CSA (ONHYM) PPL EBS - Guinea at 01-Apr-2025 00:00:00

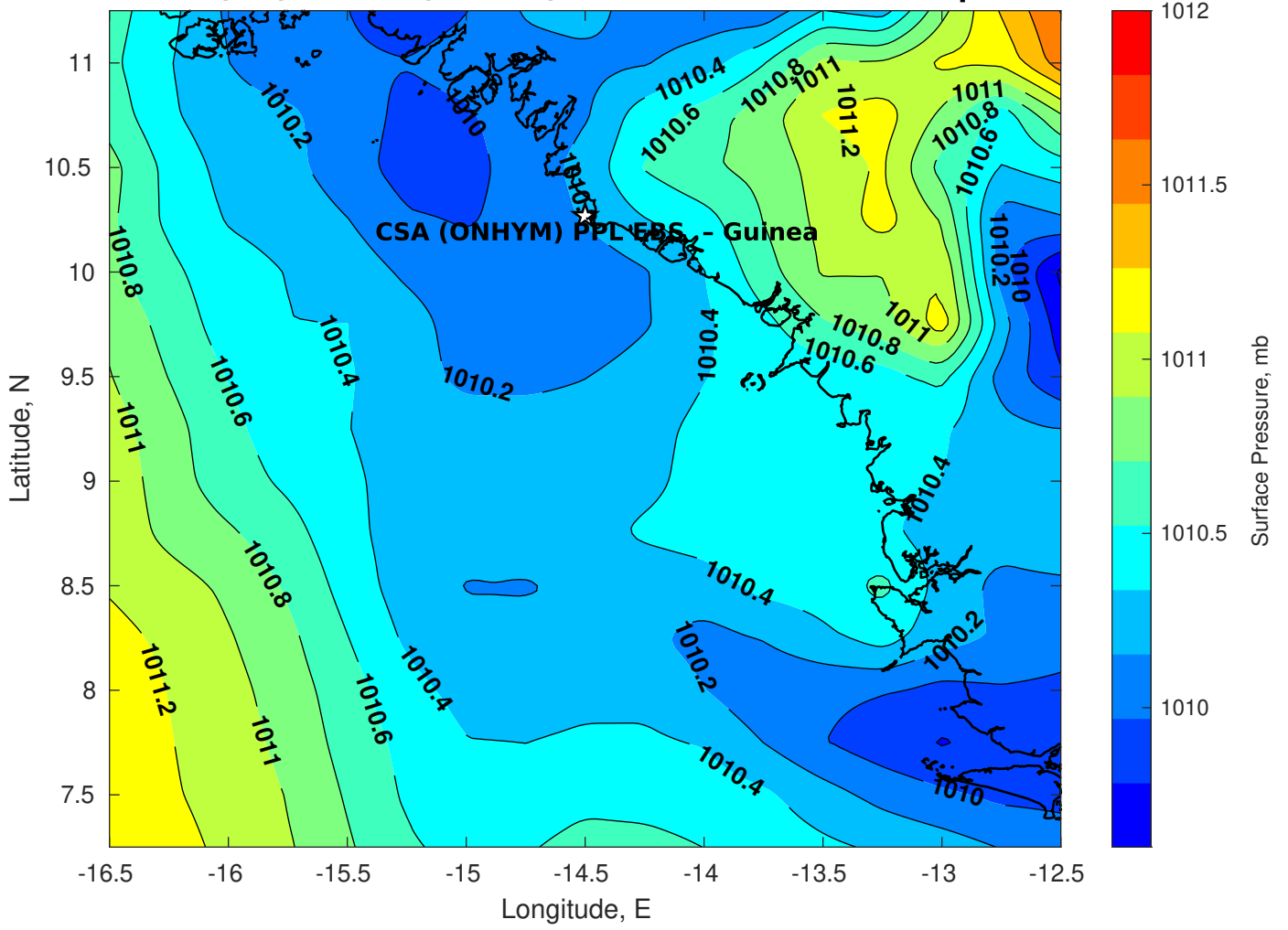


Surface Pressure (mb) for CSA (ONHYM) PPL EBS - Guinea at 02-Apr-2025 00:00:00

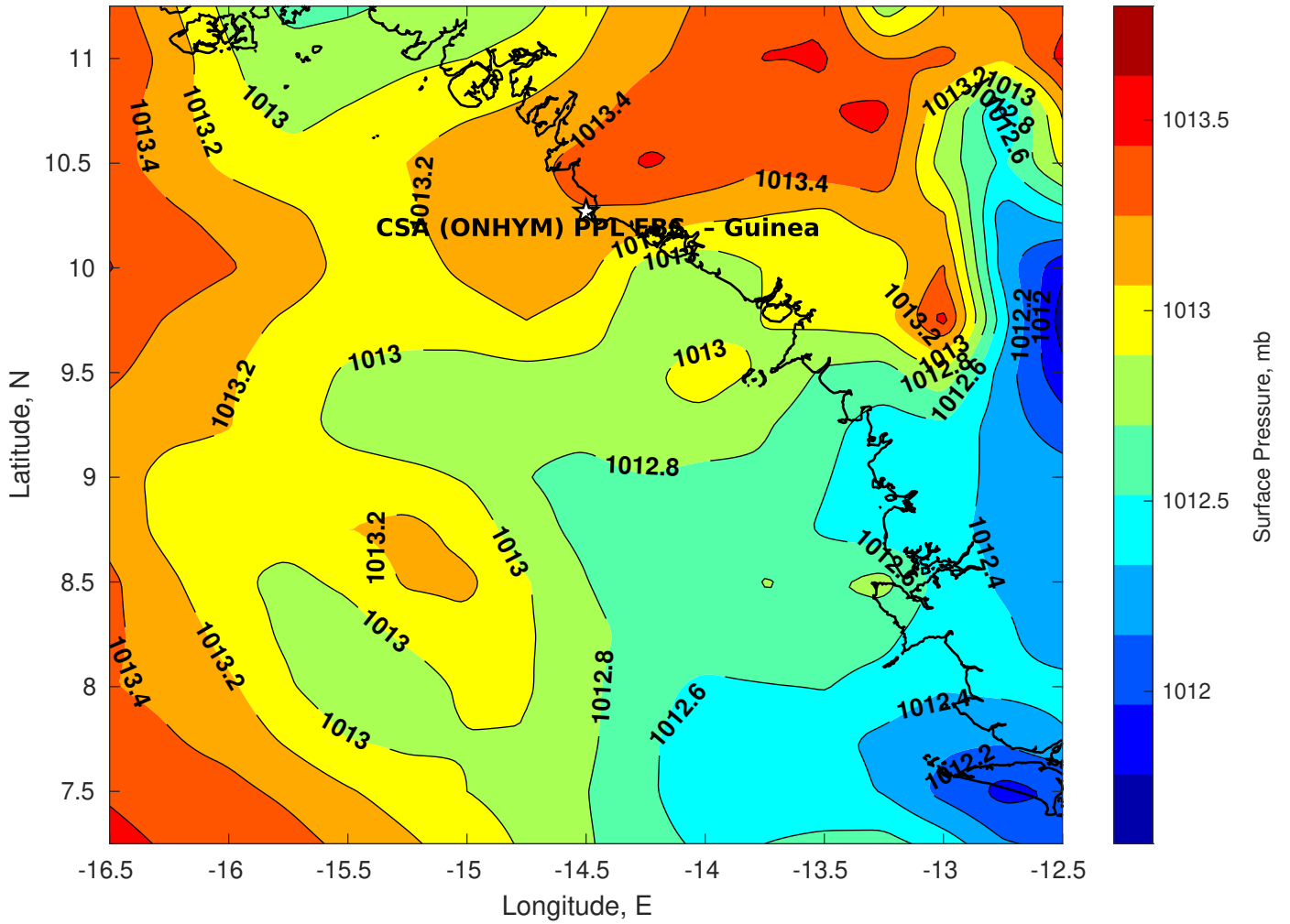




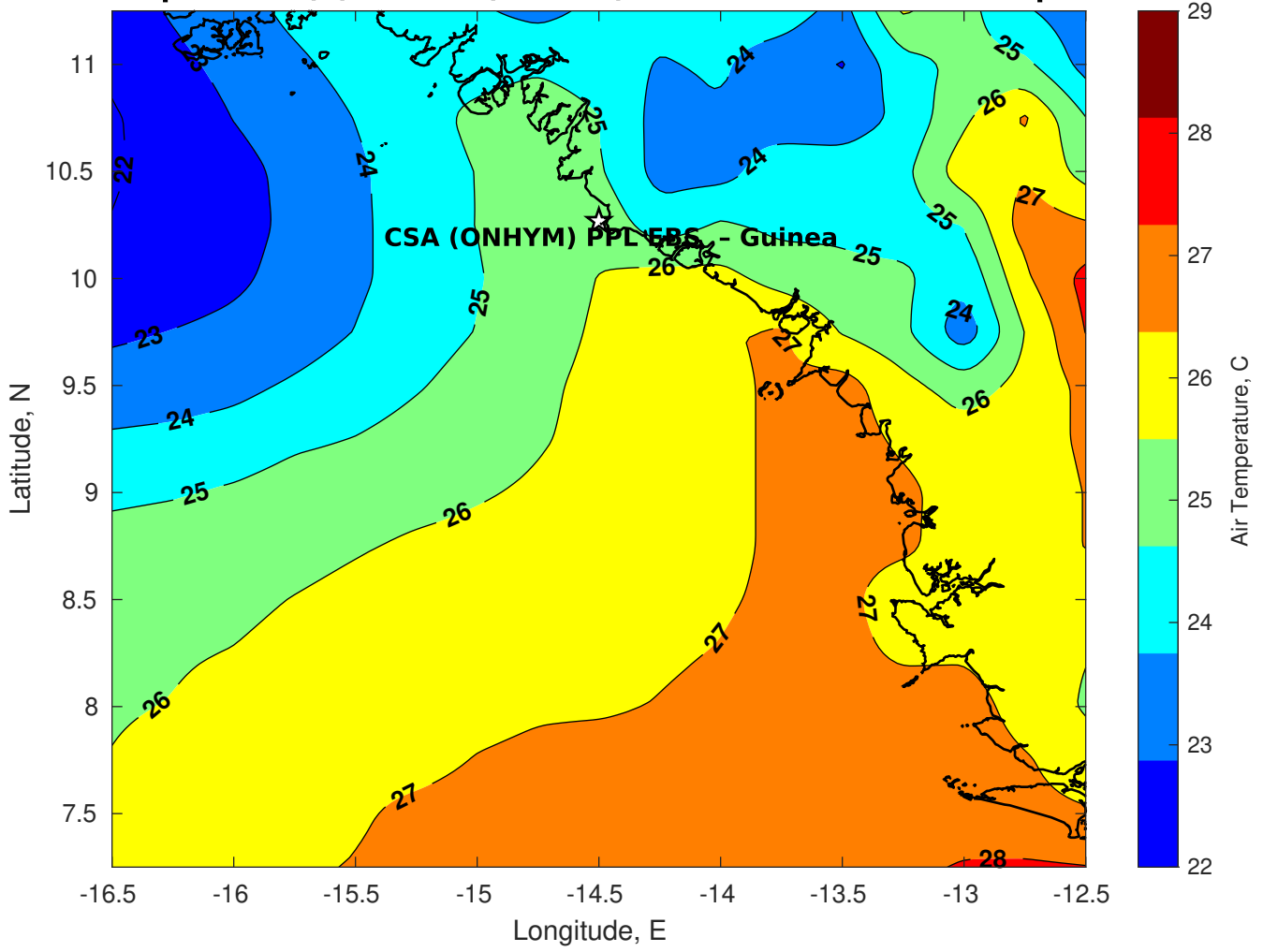
**Surface Pressure (mb) for CSA (ONHYM) PPL EBS - Guinea at 03-Apr-2025 00:00:00**



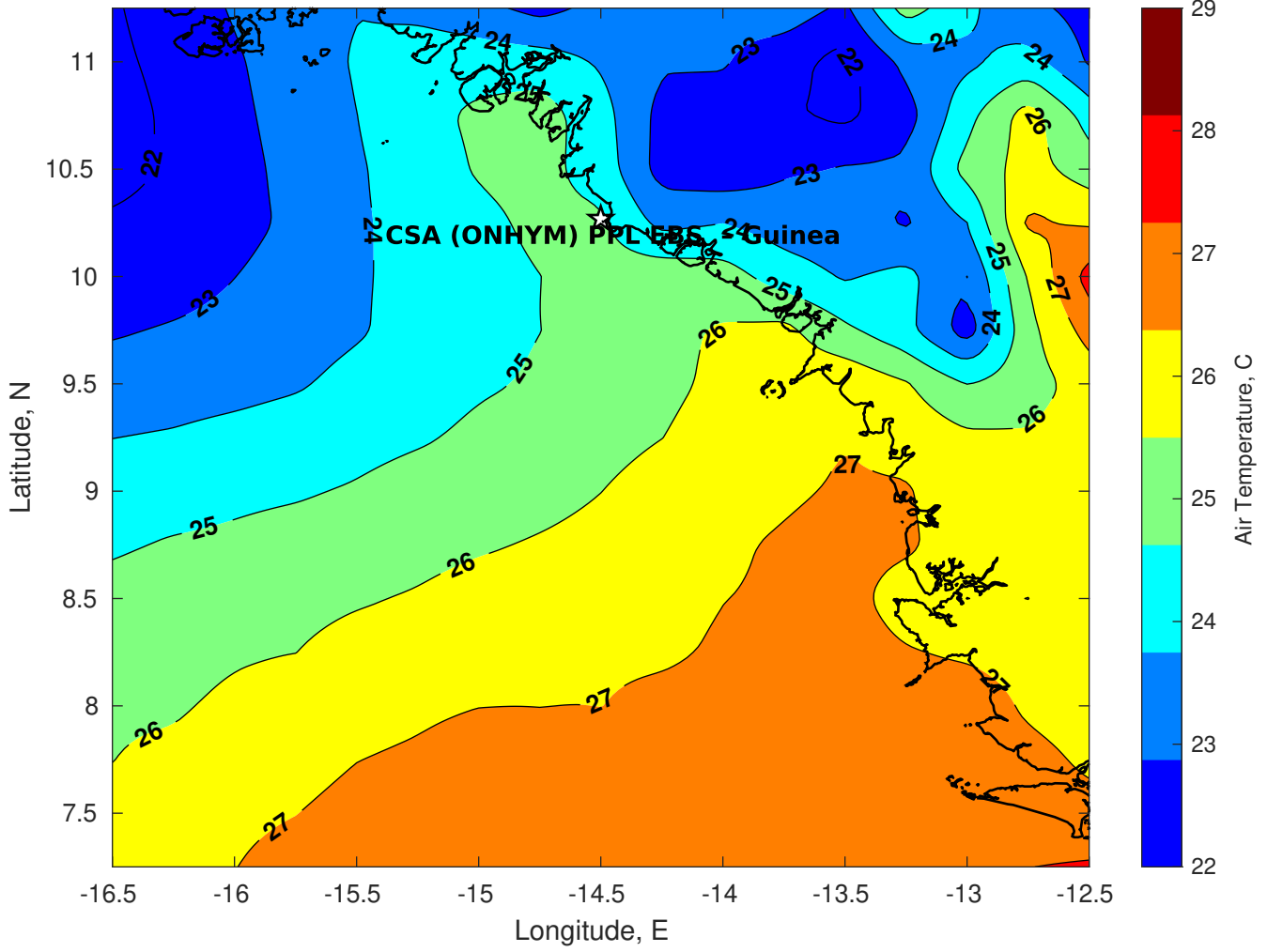
**Surface Pressure (mb) for CSA (ONHYM) PPL EBS - Guinea at 04-Apr-2025 00:00:00**



**Air Temperature (C) for CSA (ONHYM) PPL EBS - Guinea at 02-Apr-2025**



**Air Temperature (C) for CSA (ONHYM) PPL EBS - Guinea at 02-Apr-2025**



**Air Temperature (C) for CSA (ONHYM) PPL EBS - Guinea at 02-Apr-2025**

