
Marine Weather Forecast for Shell Noches GC19 PPL Geotechnical
Forecast valid as of 02-Apr-2025 0800 GMT

All times are local.

Today

Winds: NE, 20-25 kts.
Waves: N, 7-8 feet, 7-8 sec.
No currents available.

Tonight

Winds: NE, 20-25 kts.
Waves: N, 8-9 feet, 8-9 sec.
No currents available.

Thursday

Winds: NE, 20-25 kts.
Waves: N, 8-9 feet, 8-9 sec.
No currents available.

Thursday Night

Winds: NE, 15-20 kts.
Waves: NE, 7-8 feet, 8-9 sec.
No currents available.

Friday

Winds: NE, 15-20 kts.
Waves: NE, 7-8 feet, 8-9 sec.
No currents available.

Friday Night

Winds: NE, 20-25 kts.
Waves: NE, 8-9 feet, 8-9 sec.
No currents available.

Saturday

Winds: NE, 20-25 kts.
Waves: NE, 8-9 feet, 8-9 sec.
No currents available.

Saturday Night

Winds: N, 15-20 kts.
Waves: NE, 8-9 feet, 8-9 sec.
No currents available.

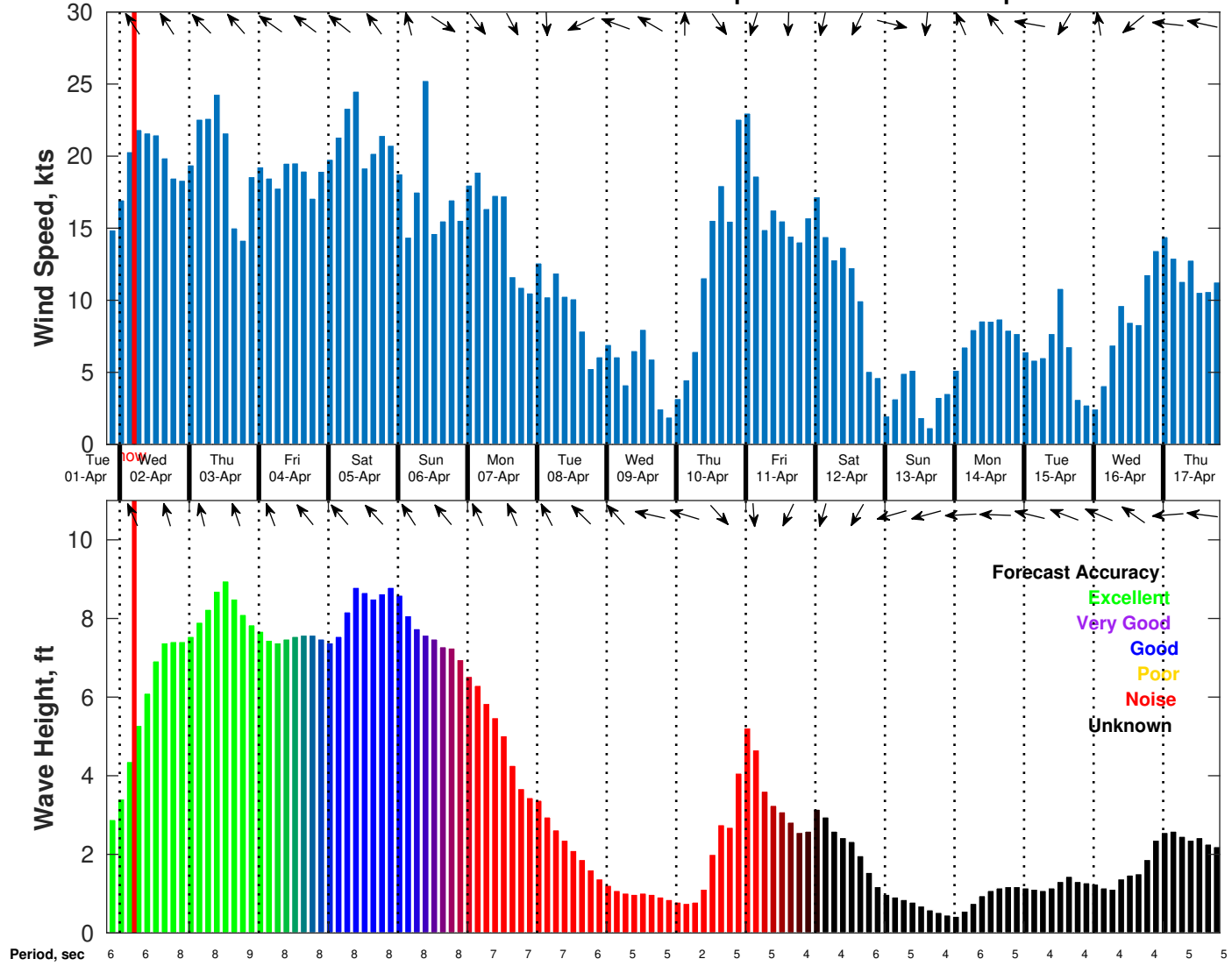
Sunday

Winds: NW, 25-30 kts.
Waves: NE, 7-8 feet, 8-9 sec.
No currents available.

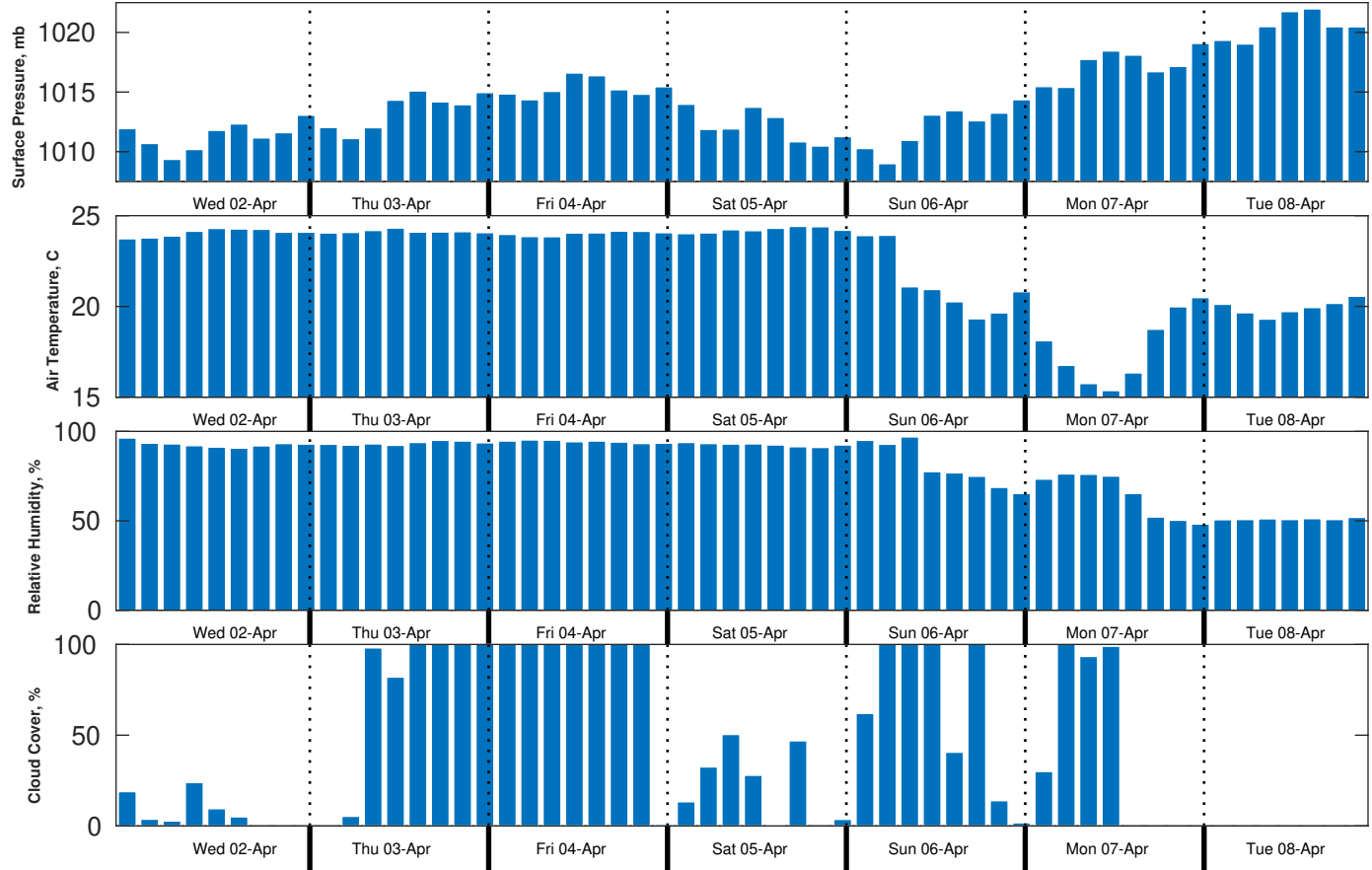
Sunday Night

Winds: N, 15-20 kts.
Waves: N, 6-7 feet, 8-9 sec.
No currents available.

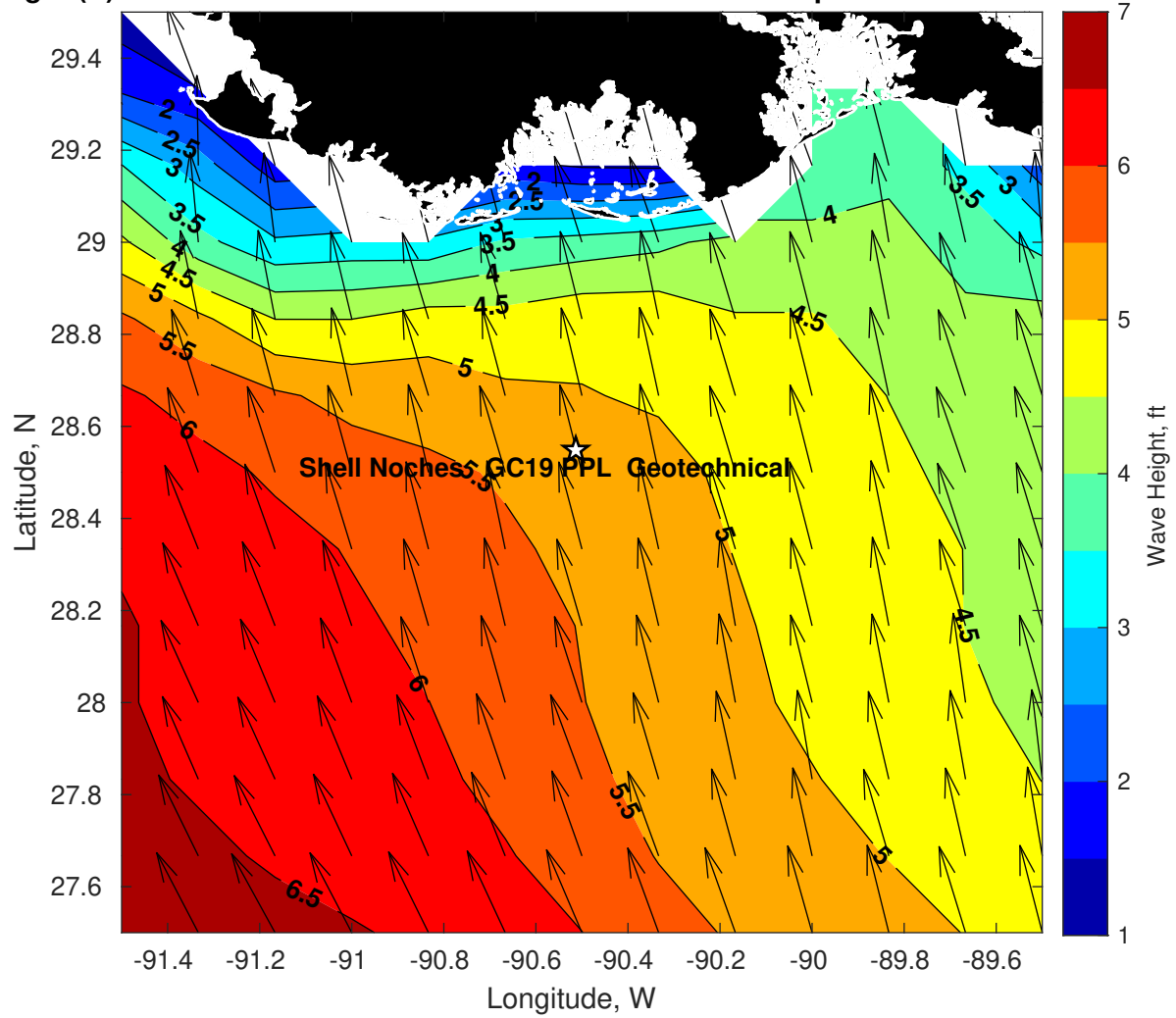
Wind & Wave Forecast for Shell Noches GC19 PPL Geotechnical from 01-Apr-2025 20:00:00 to 17-Apr-2025 20:00:00



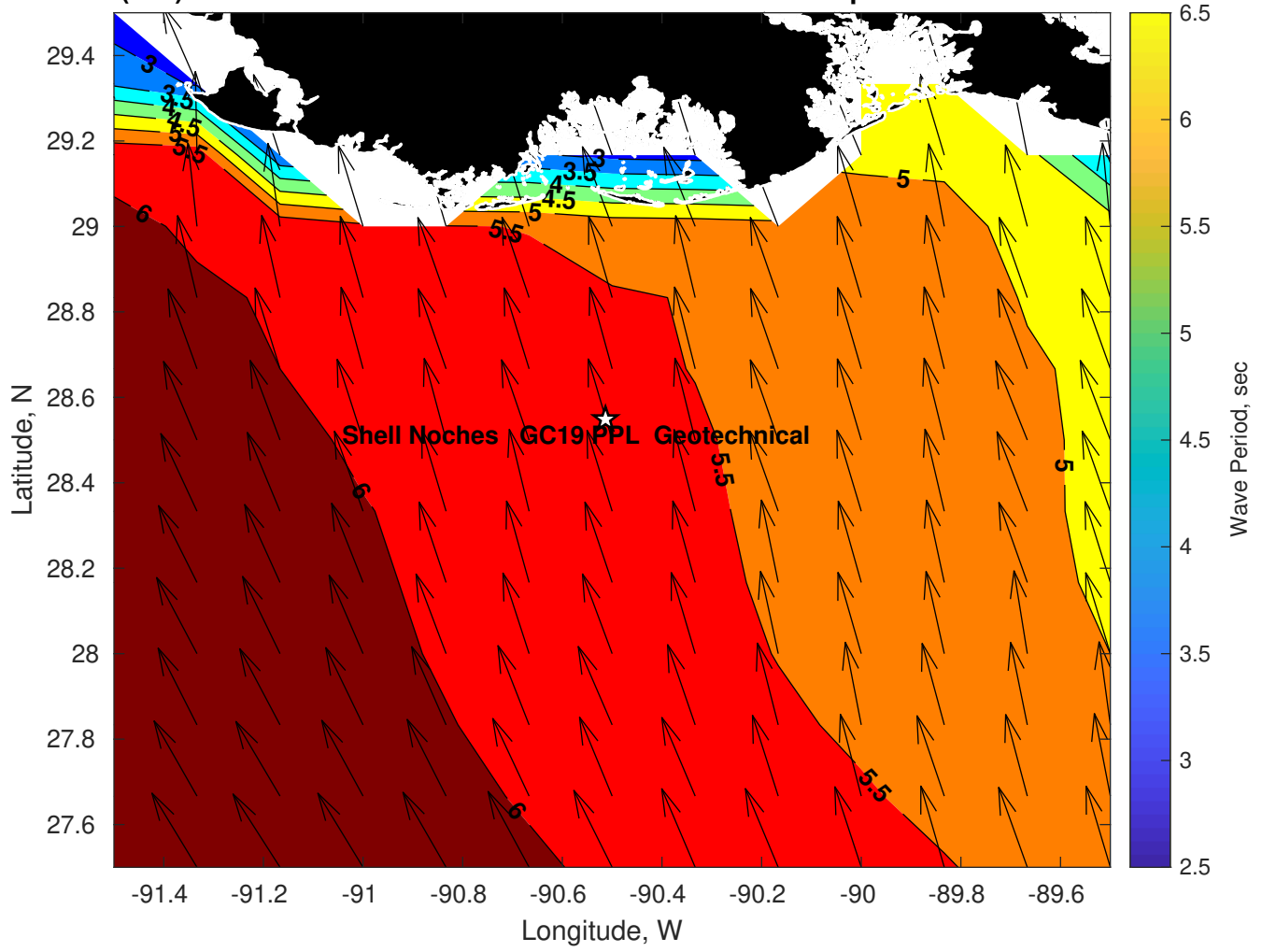
Met Forecast for Shell Noches GC19 PPL Geotechnical from 02-Apr-2025 00:00:00 to 09-Apr-2025 00:00:00



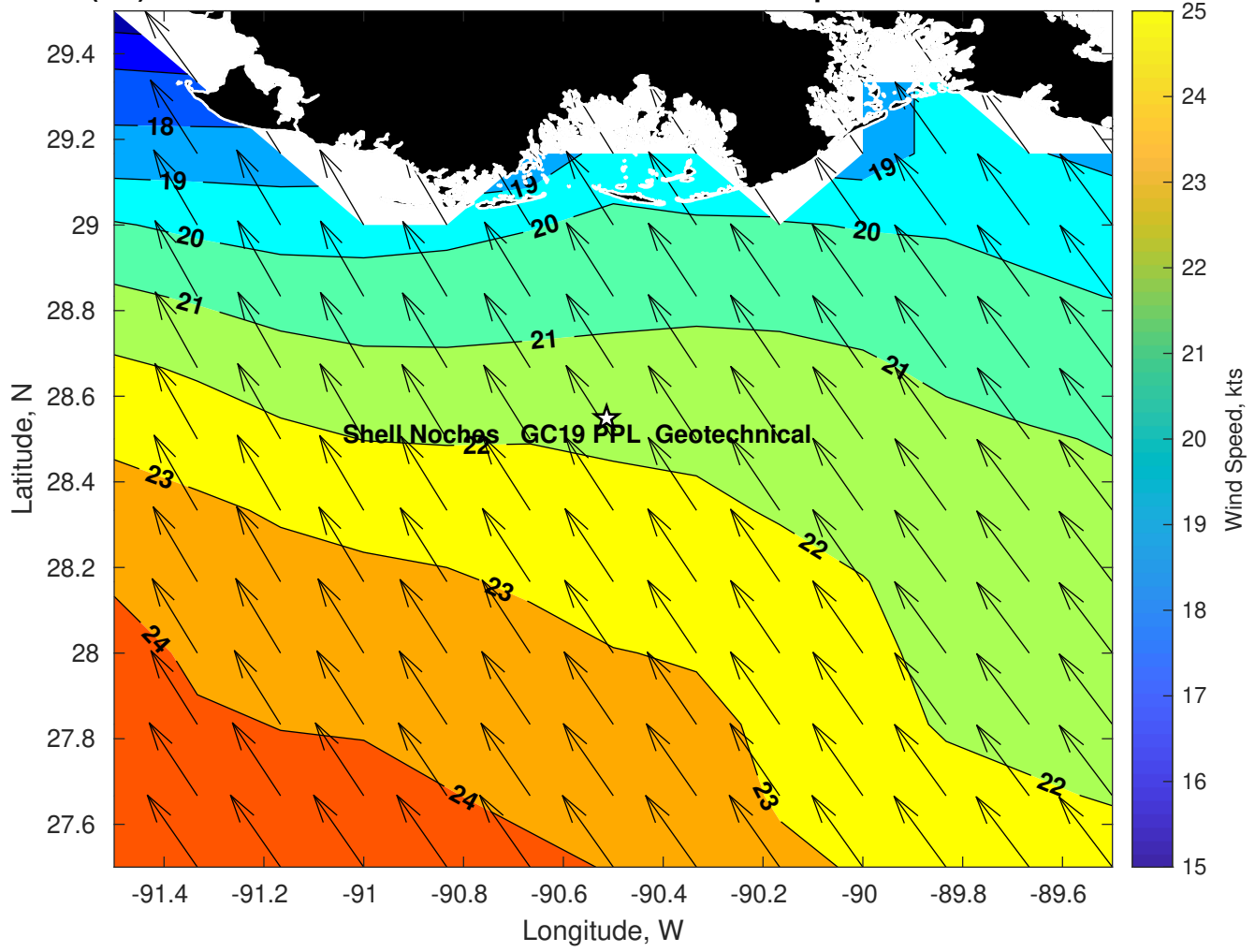
Wave Height (ft) for Shell Noches GC19 PPL Geotechnical at 02-Apr-2025 09:00:00



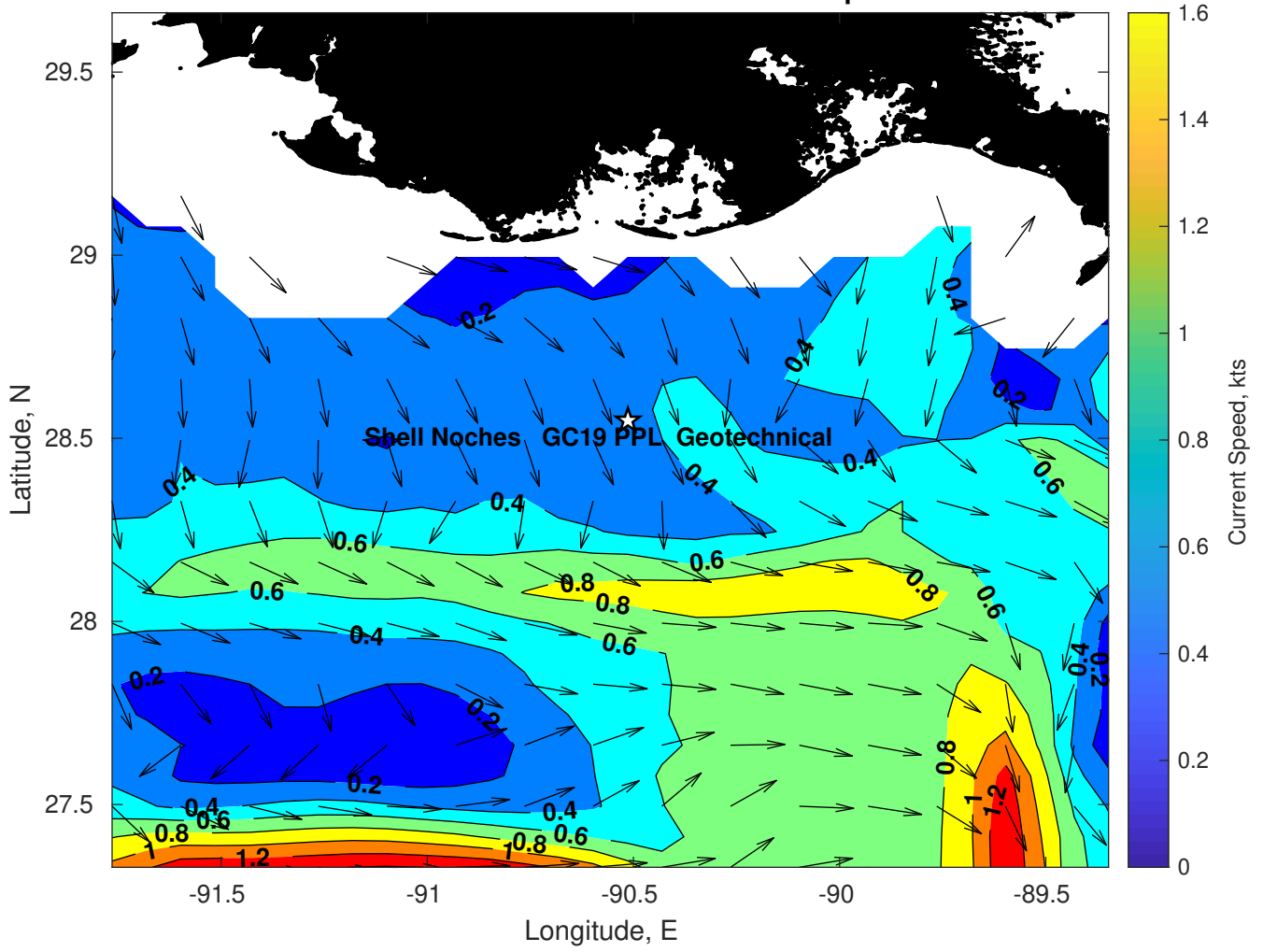
Wave Period (sec) for Shell Noches GC19 PPL Geotechnical at 02-Apr-2025 09:00:00



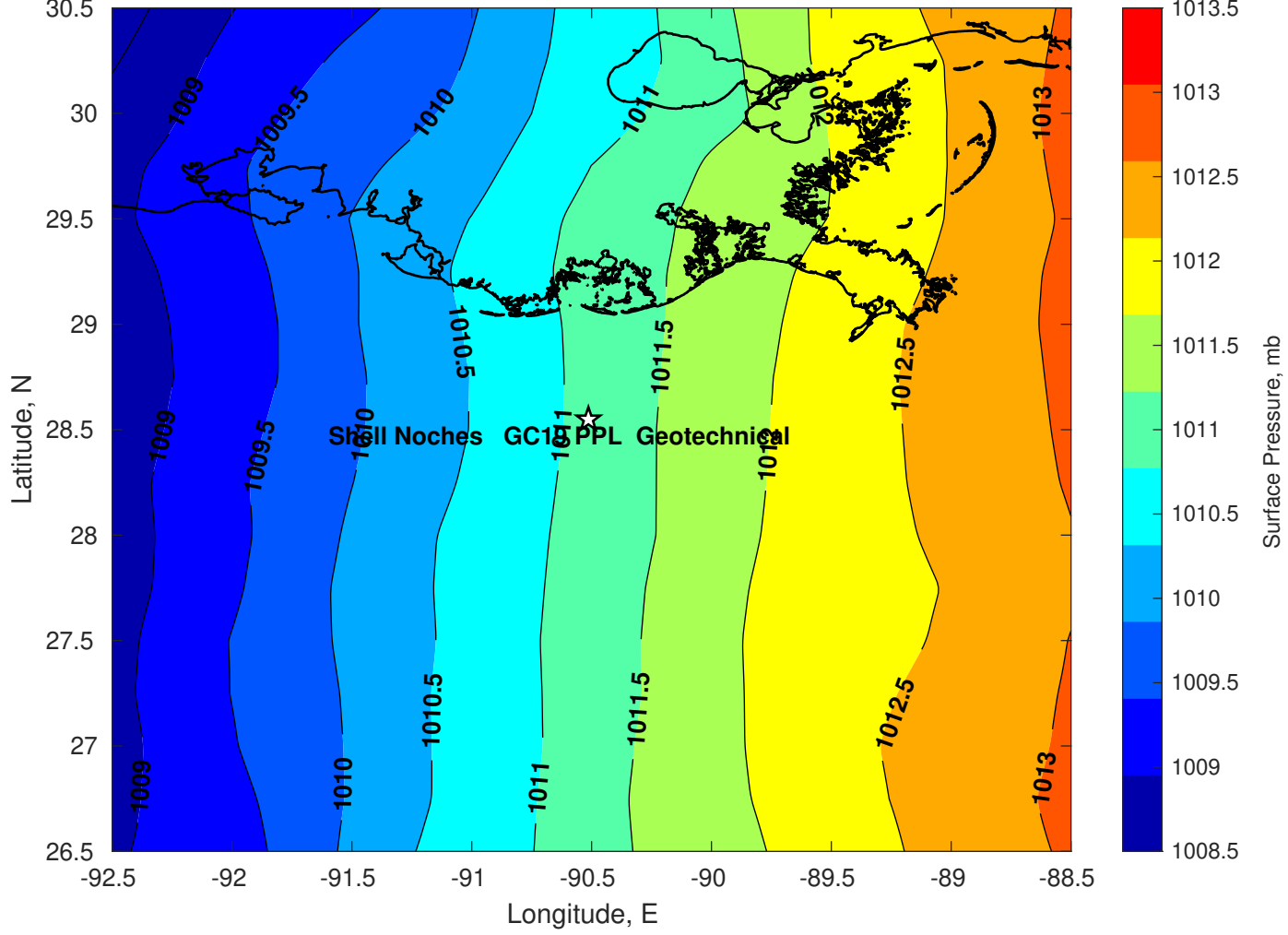
Winds (kts) for Shell Nochas GC19 PPL Geotechnical at 02-Apr-2025 09:00:00



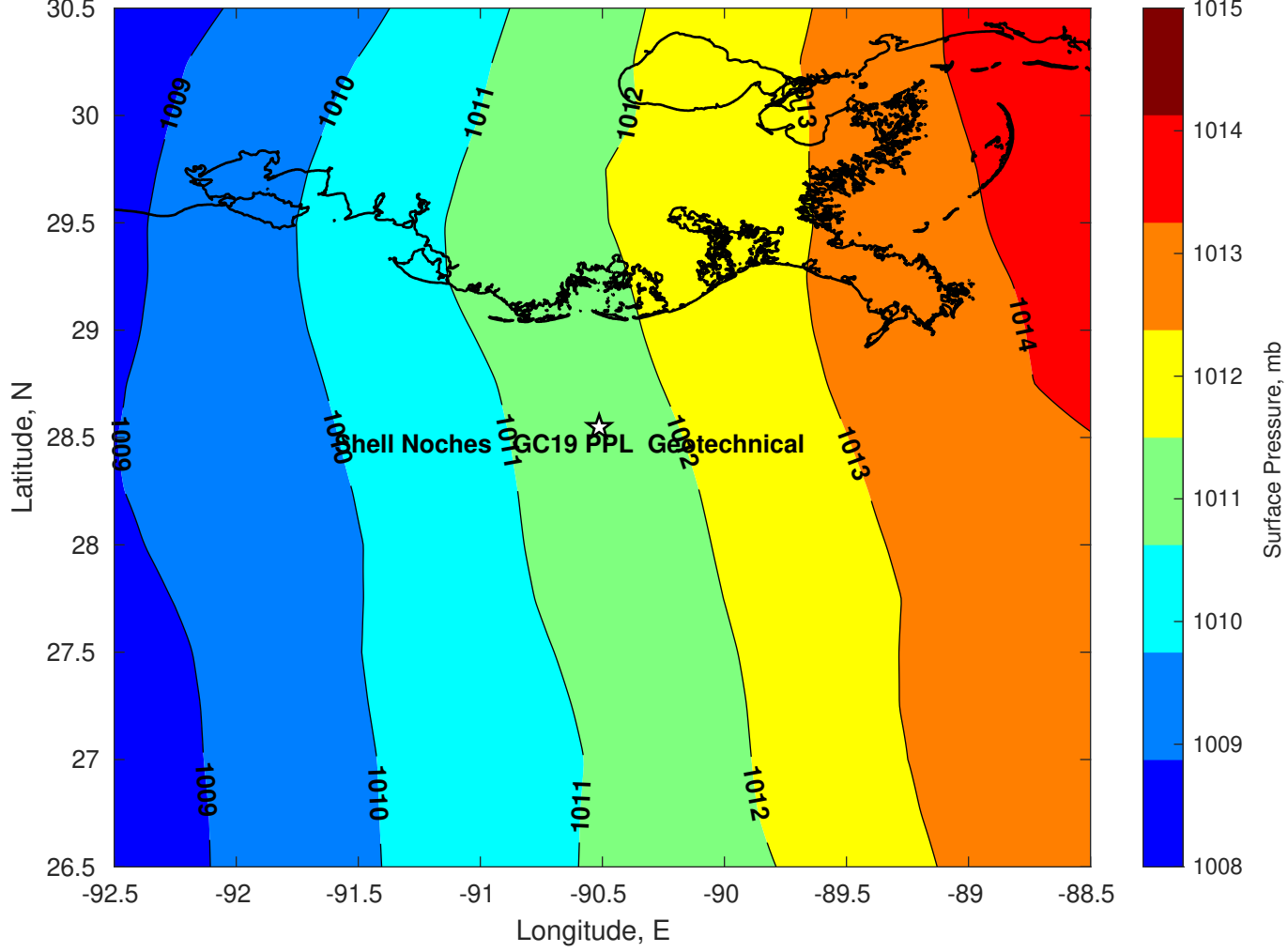
Surface Currents for Shell Noches GC19 PPL Geotechnical at 01-Apr-2025 00:00:00



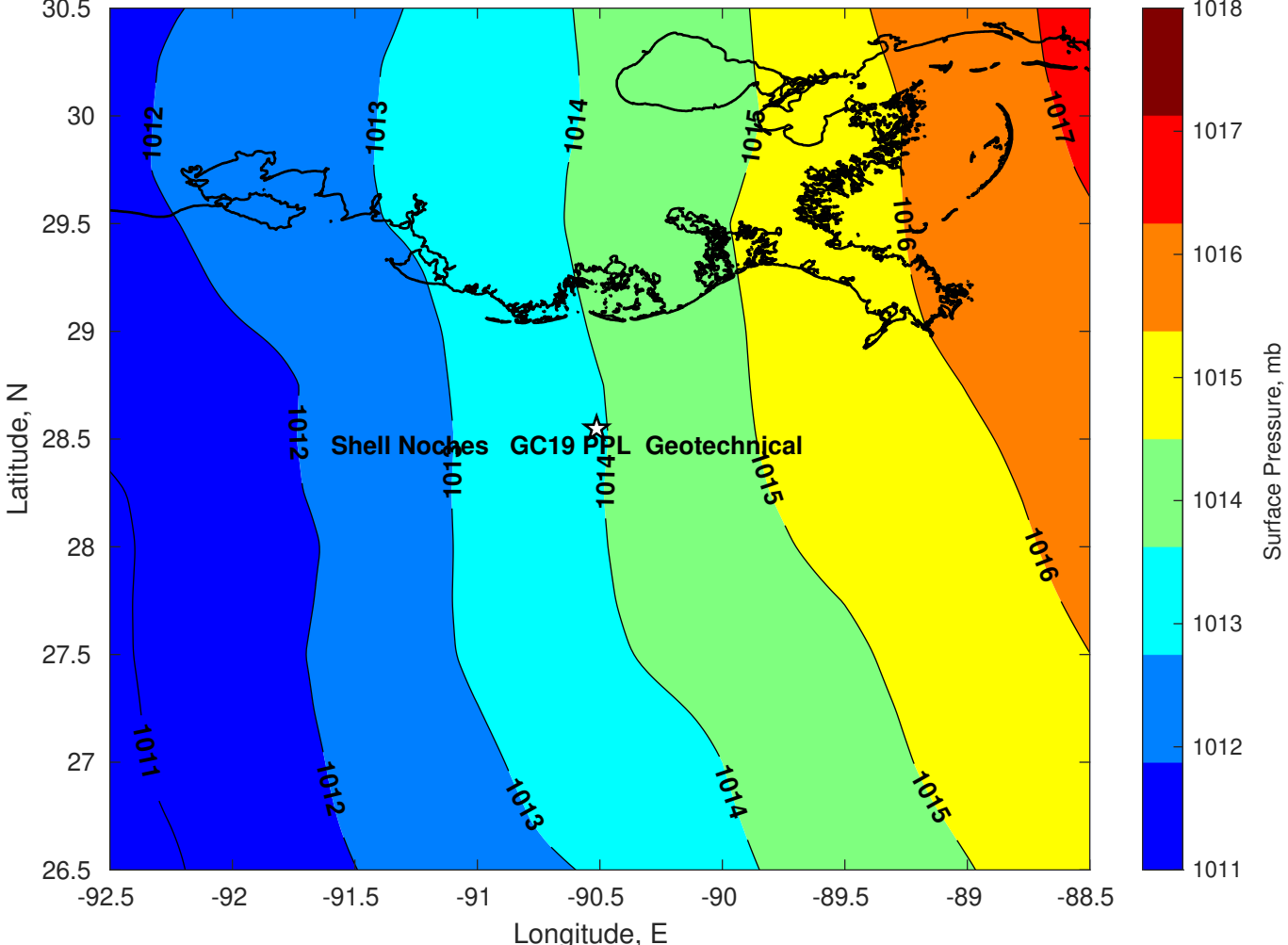
Surface Pressure (mb) for Shell Noches GC19 PPL Geotechnical at 02-Apr-2025 00:00:00



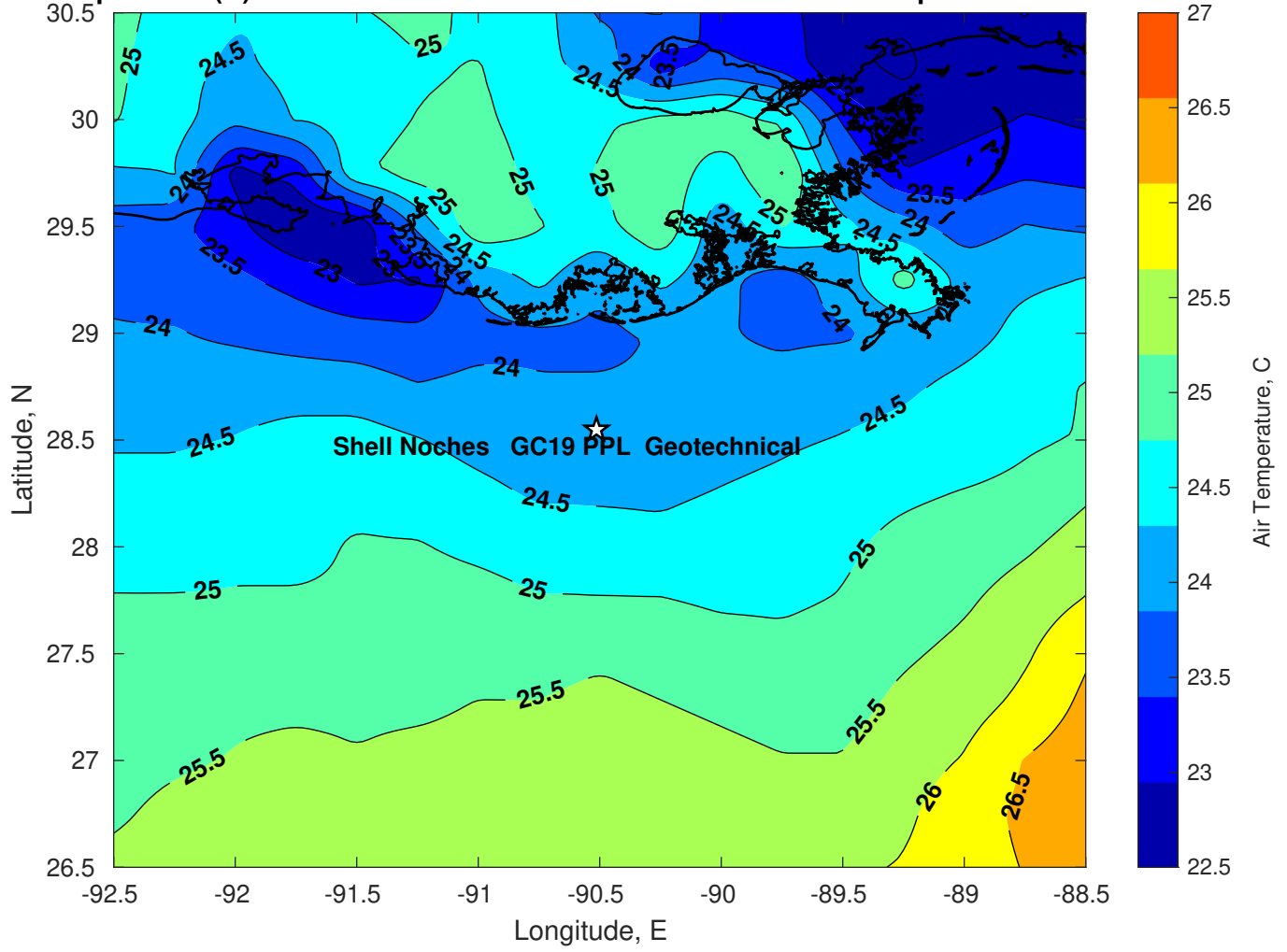
Surface Pressure (mb) for Shell Noches GC19 PPL Geotechnical at 03-Apr-2025 00:00:00



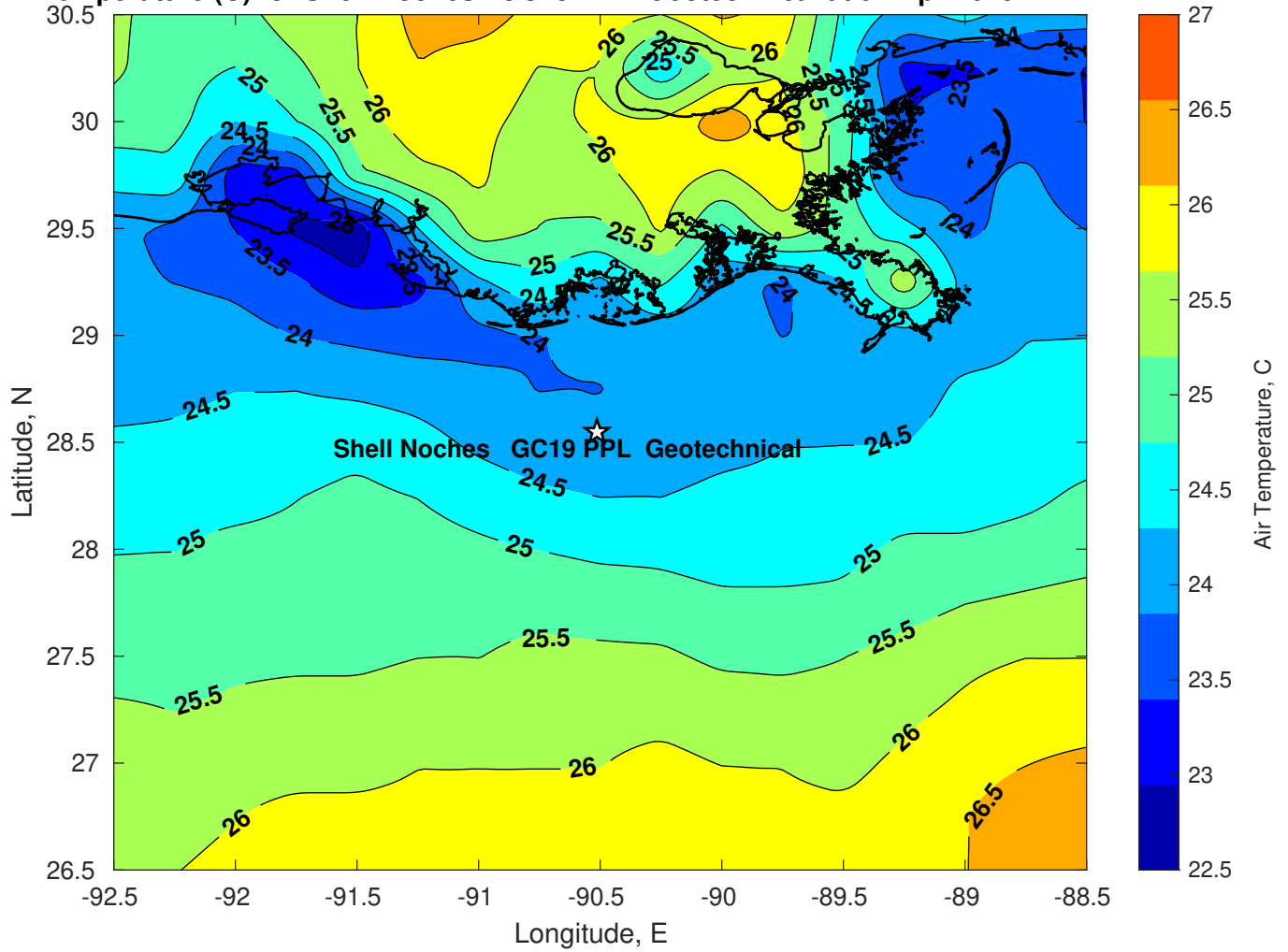
Surface Pressure (mb) for Shell Noches GC19 PPL Geotechnical at 04-Apr-2025 00:00:00



Air Temperature (C) for Shell Noches GC19 PPL Geotechnical at 02-Apr-2025



Air Temperature (C) for Shell Noches GC19 PPL Geotechnical at 02-Apr-2025



Air Temperature (C) for Shell Noches GC19 PPL Geotechnical at 02-Apr-2025

