
Marine Weather Forecast for CSA (ONHYM) PPL EBS - Senegal
Forecast valid as of 12-Apr-2025 0800 GMT

All times are local.

Today

Winds: N, 15-20 kts.
Waves: NW, 6-7 feet, 11-12 sec.
No currents available.

Tonight

Winds: N, 15-20 kts.
Waves: NW, 6-7 feet, 10-11 sec.
No currents available.

Sunday

Winds: N, 15-20 kts.
Waves: NW, 5-6 feet, 10-11 sec.
No currents available.

Sunday Night

Winds: N, 15-20 kts.
Waves: NW, 5-6 feet, 10-11 sec.
No currents available.

Monday

Winds: N, 10-15 kts.
Waves: NW, 5-6 feet, 9-10 sec.
No currents available.

Monday Night

Winds: N, 10-15 kts.
Waves: NW, 5-6 feet, 8-9 sec.
No currents available.

Tuesday

Winds: N, 10-15 kts.
Waves: NW, 5-6 feet, 8-9 sec.
No currents available.

Tuesday Night

Winds: N, 10-15 kts.
Waves: NW, 5-6 feet, 8-9 sec.
No currents available.

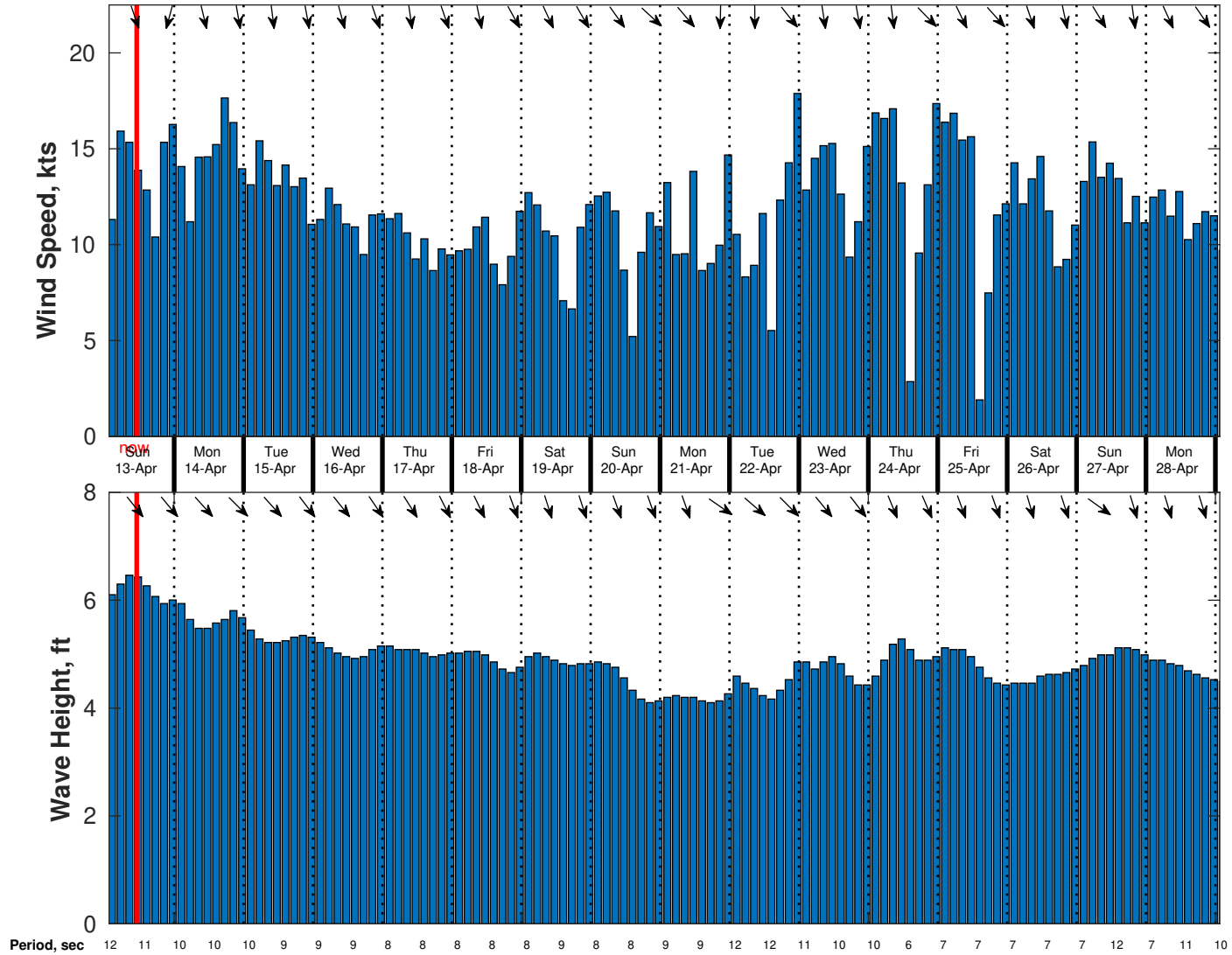
Wednesday

Winds: N, 10-15 kts.
Waves: N, 5-6 feet, 8-9 sec.
No currents available.

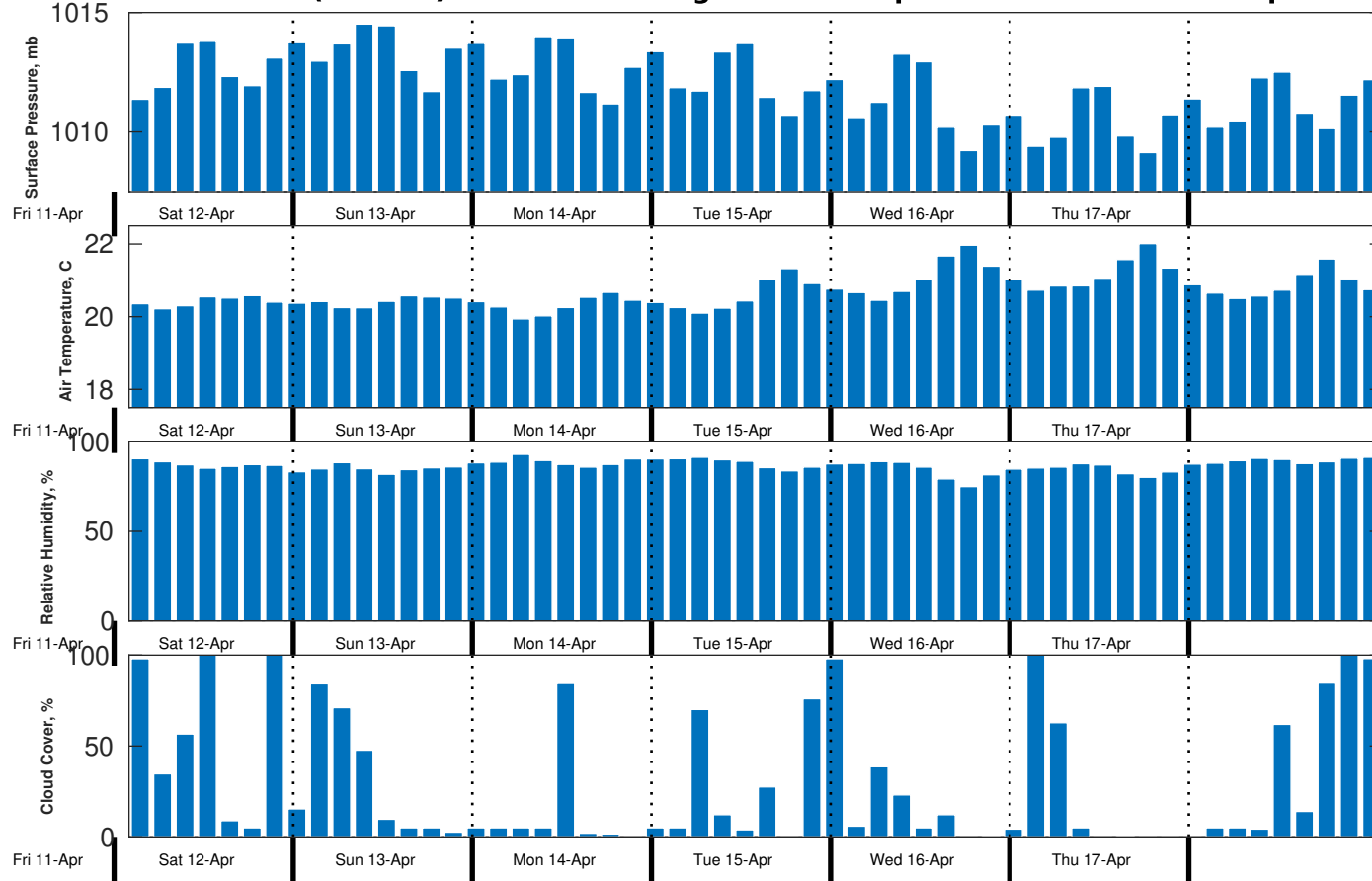
Wednesday Night

Winds: N, 5-10 kts.
Waves: N, 5-6 feet, 8-9 sec.
No currents available.

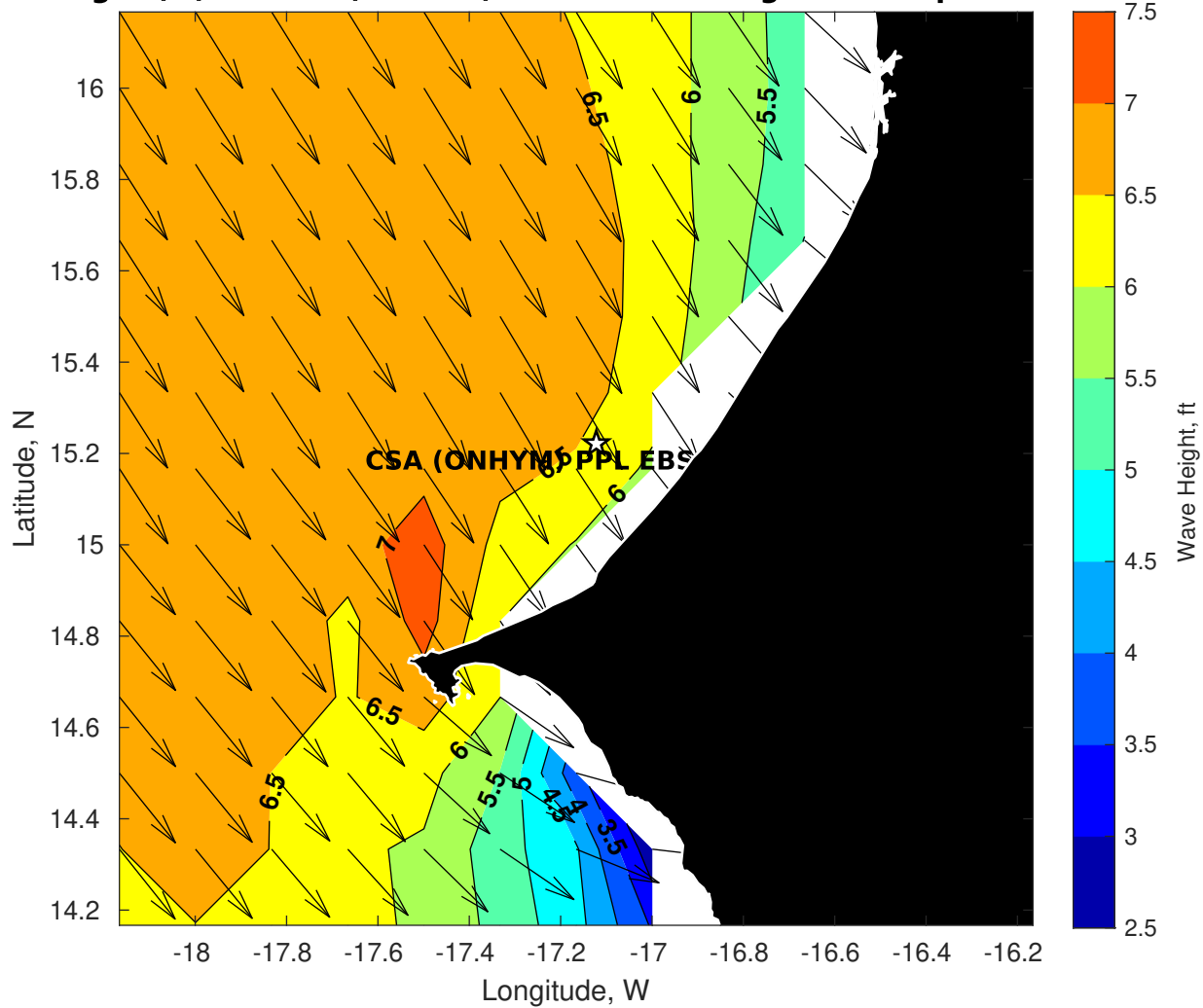
Wind & Wave Forecast for CSA (ONHYM) PPL EBS - Senegal from 12-Apr-2025 01:00:00 to 28-Apr-2025 01:00:00



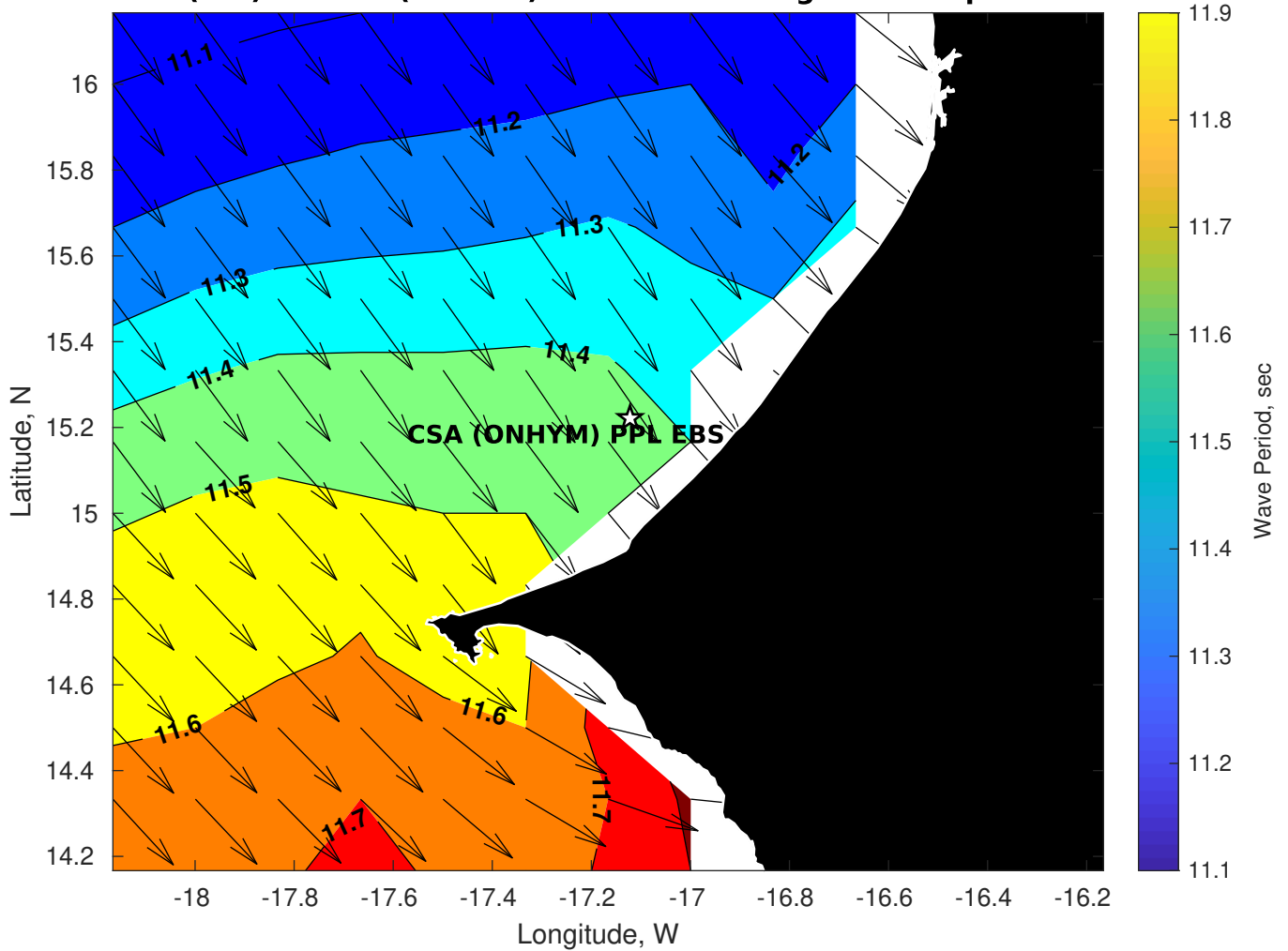
Met Forecast for CSA (ONHYM) PPL EBS - Senegal from 12-Apr-2025 00:00:00 to 19-Apr-2025 00:00:00



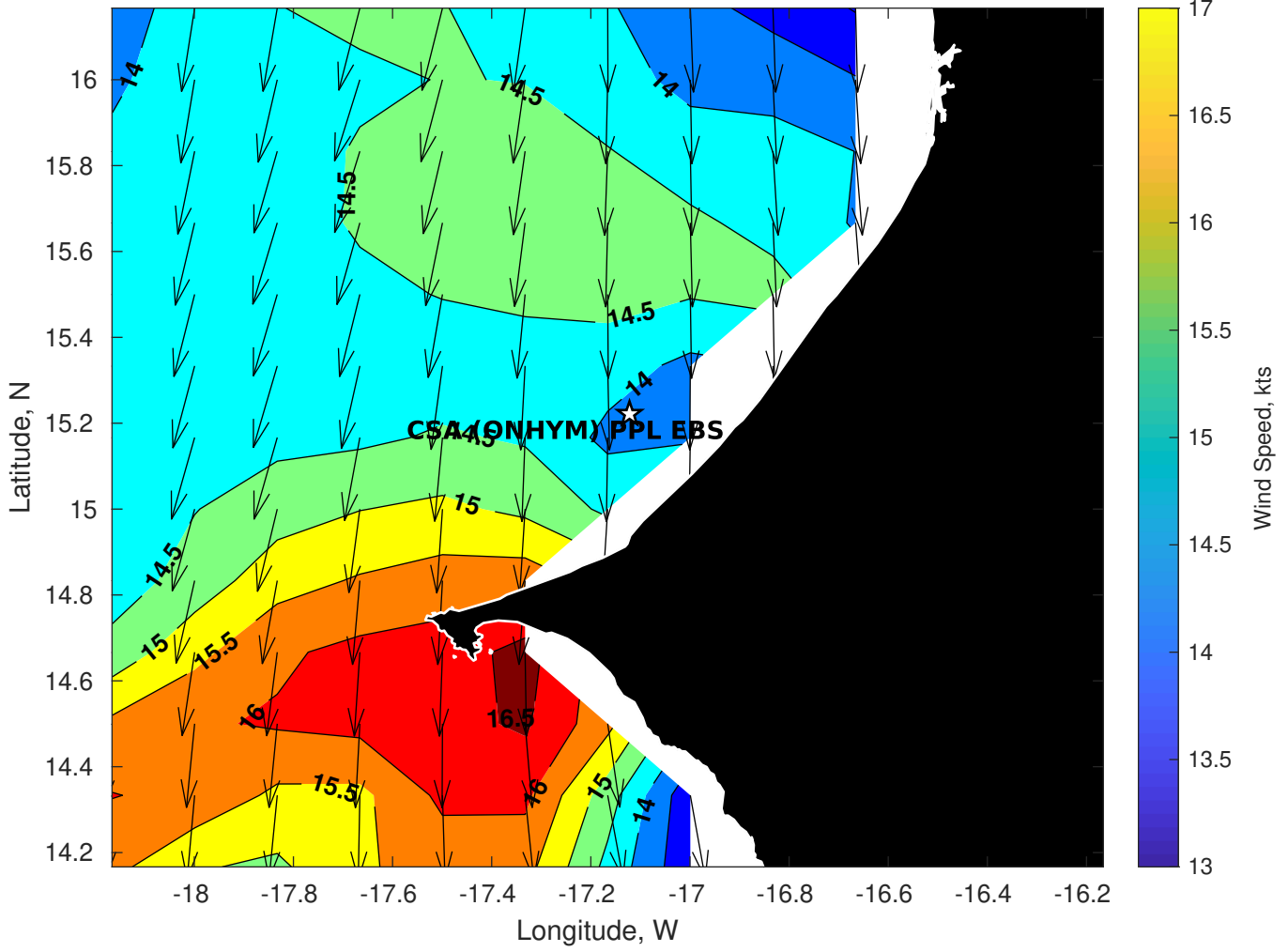
Wave Height (ft) for CSA (ONHYM) PPL EBS - Senegal at 12-Apr-2025 09:00:00



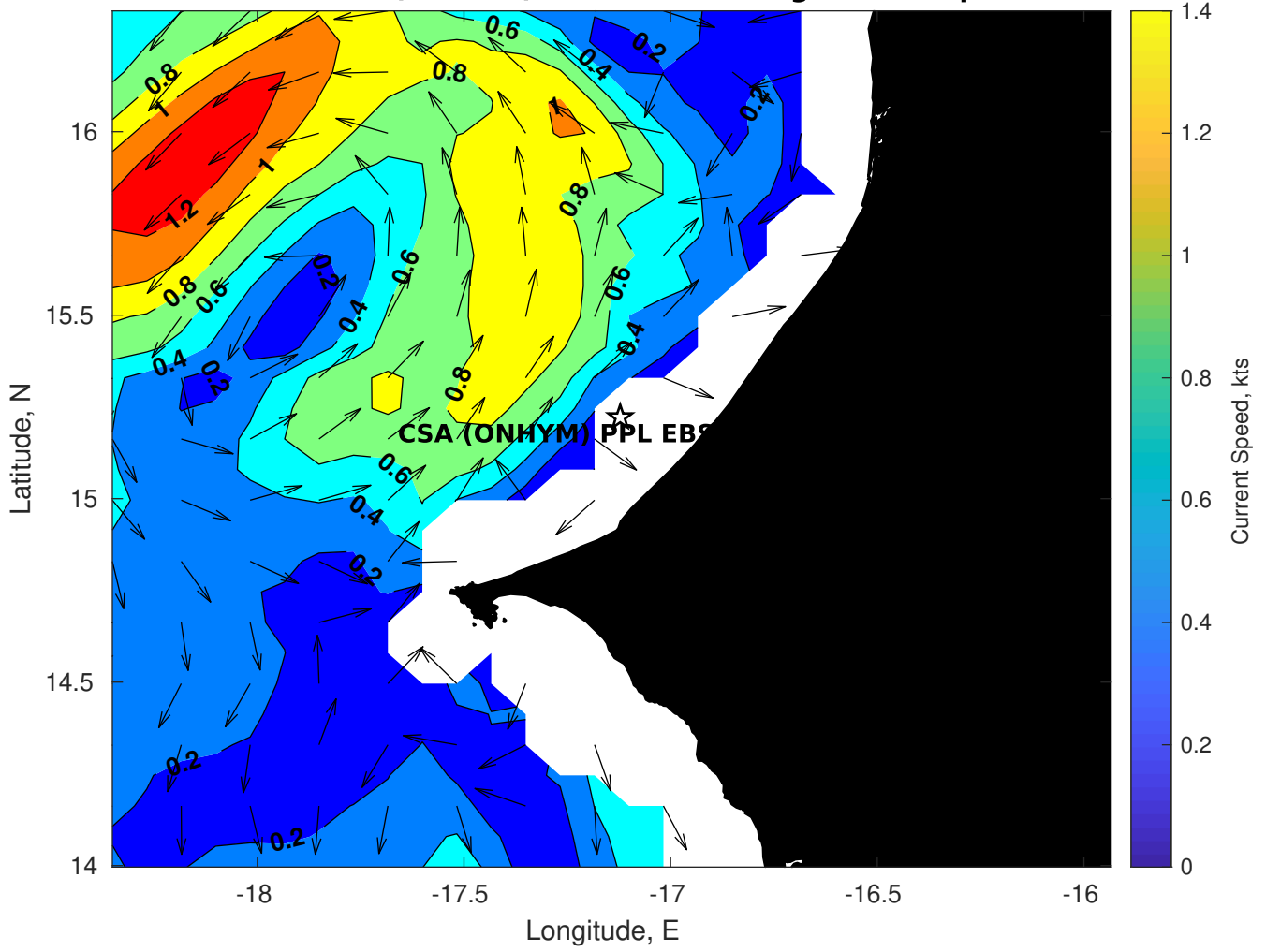
Wave Period (sec) for CSA (ONHYM) PPL EBS - Senegal at 12-Apr-2025 09:00:00



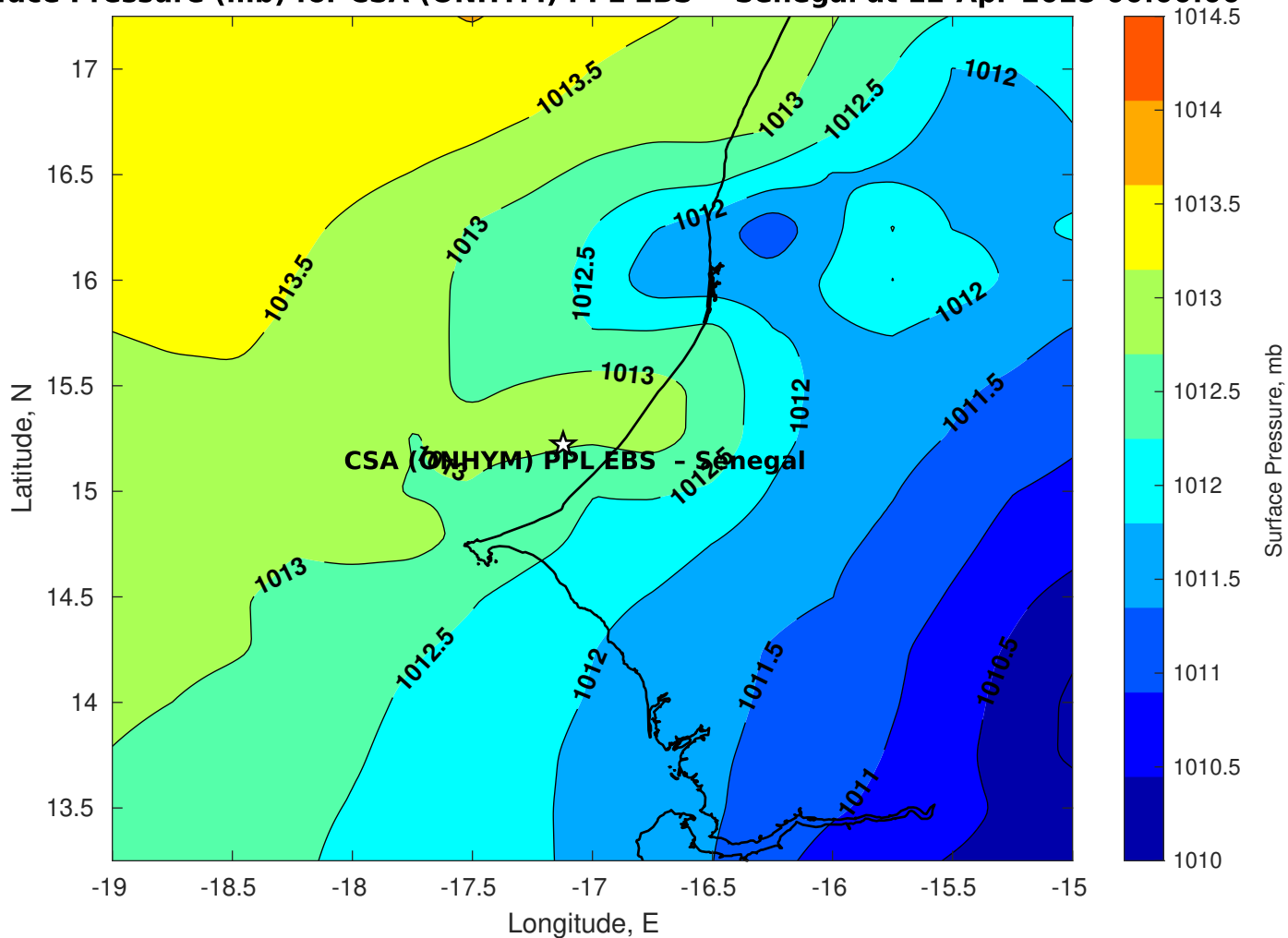
Winds (kts) for CSA (ONHYM) PPL EBS - Senegal at 12-Apr-2025 09:00:00



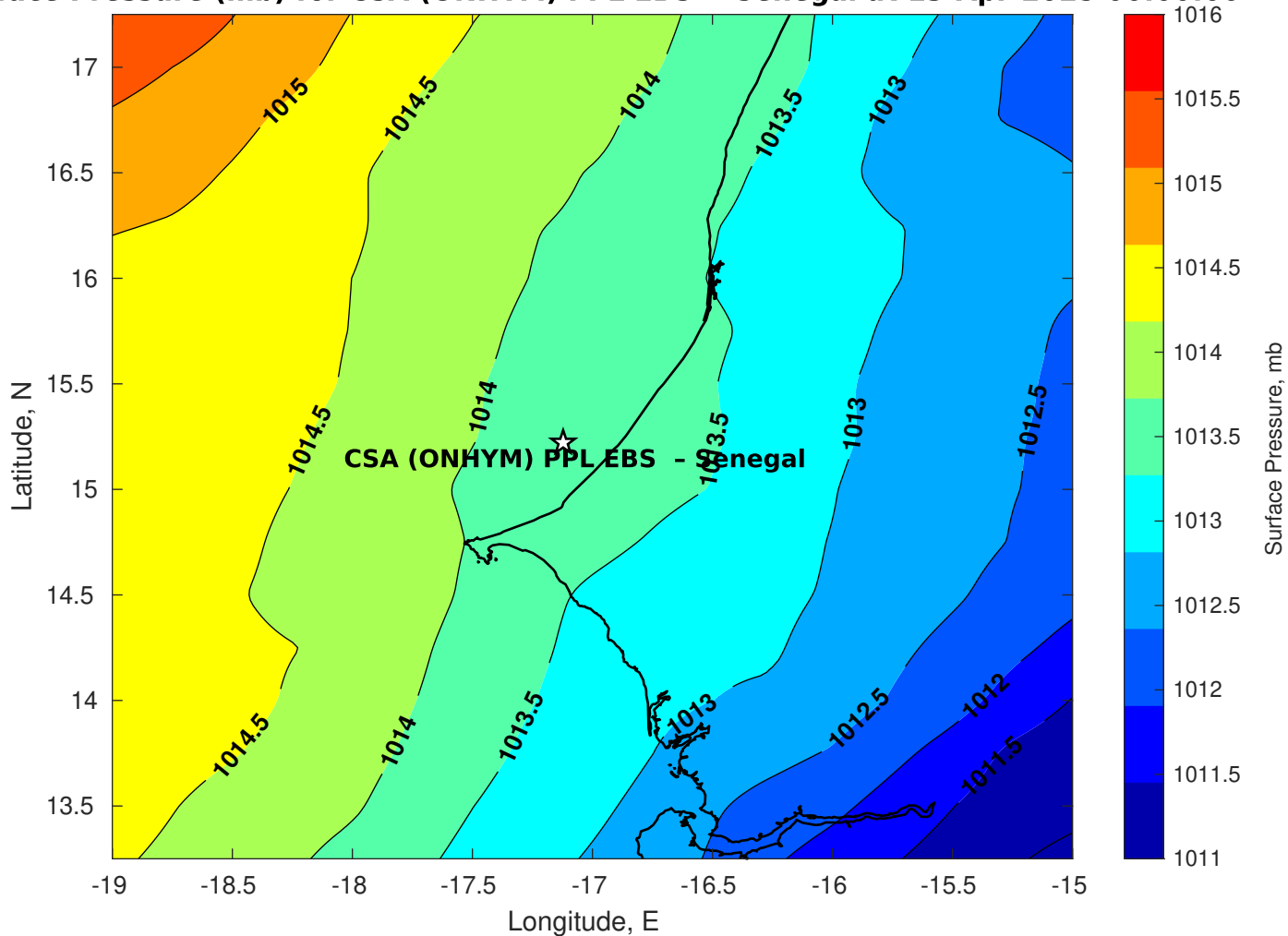
Surface Currents for CSA (ONHYM) PPL EBS - Senegal at 11-Apr-2025 00:00:00



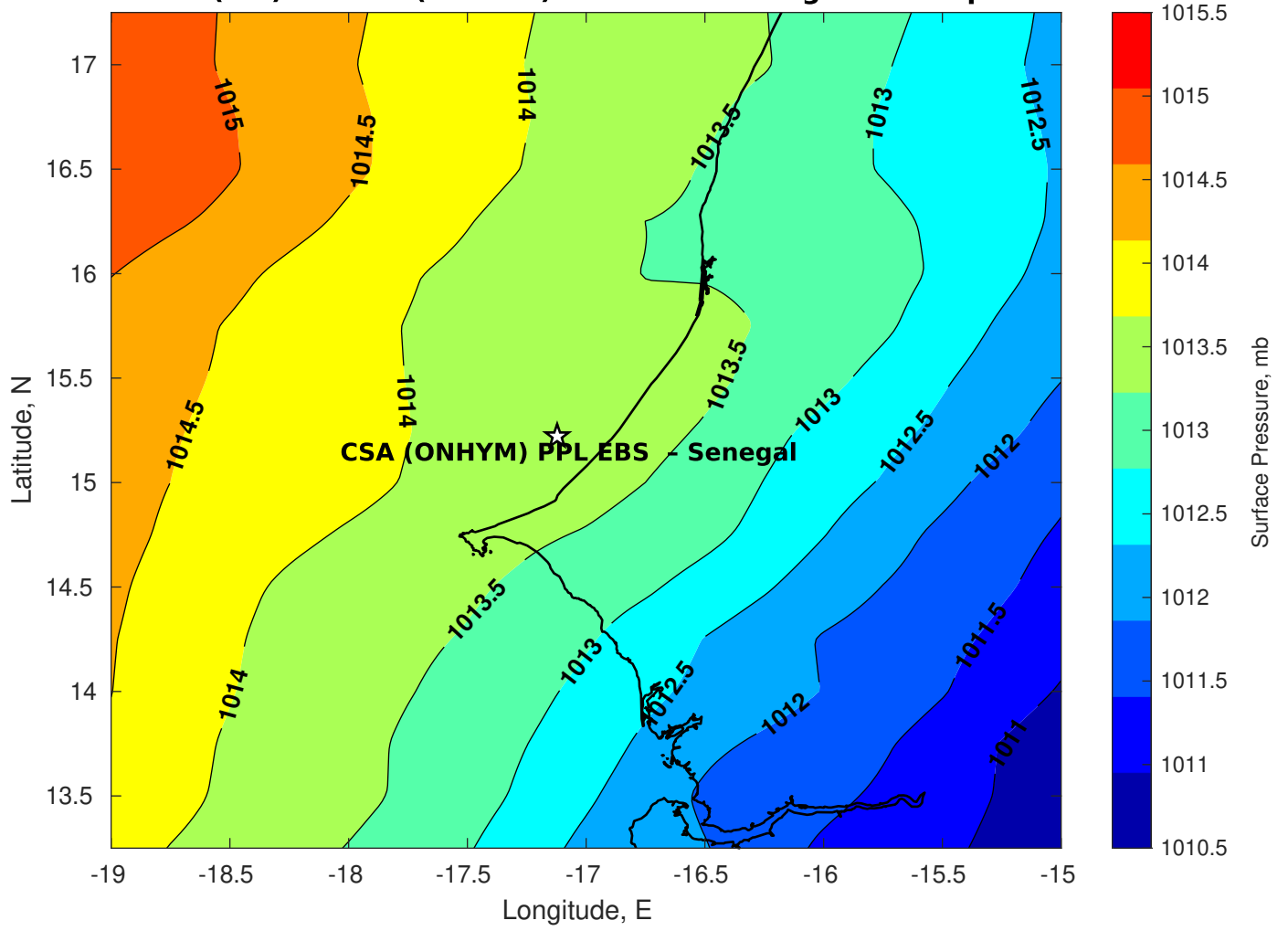
Surface Pressure (mb) for CSA (ONHYM) PPL EBS - Senegal at 12-Apr-2025 00:00:00



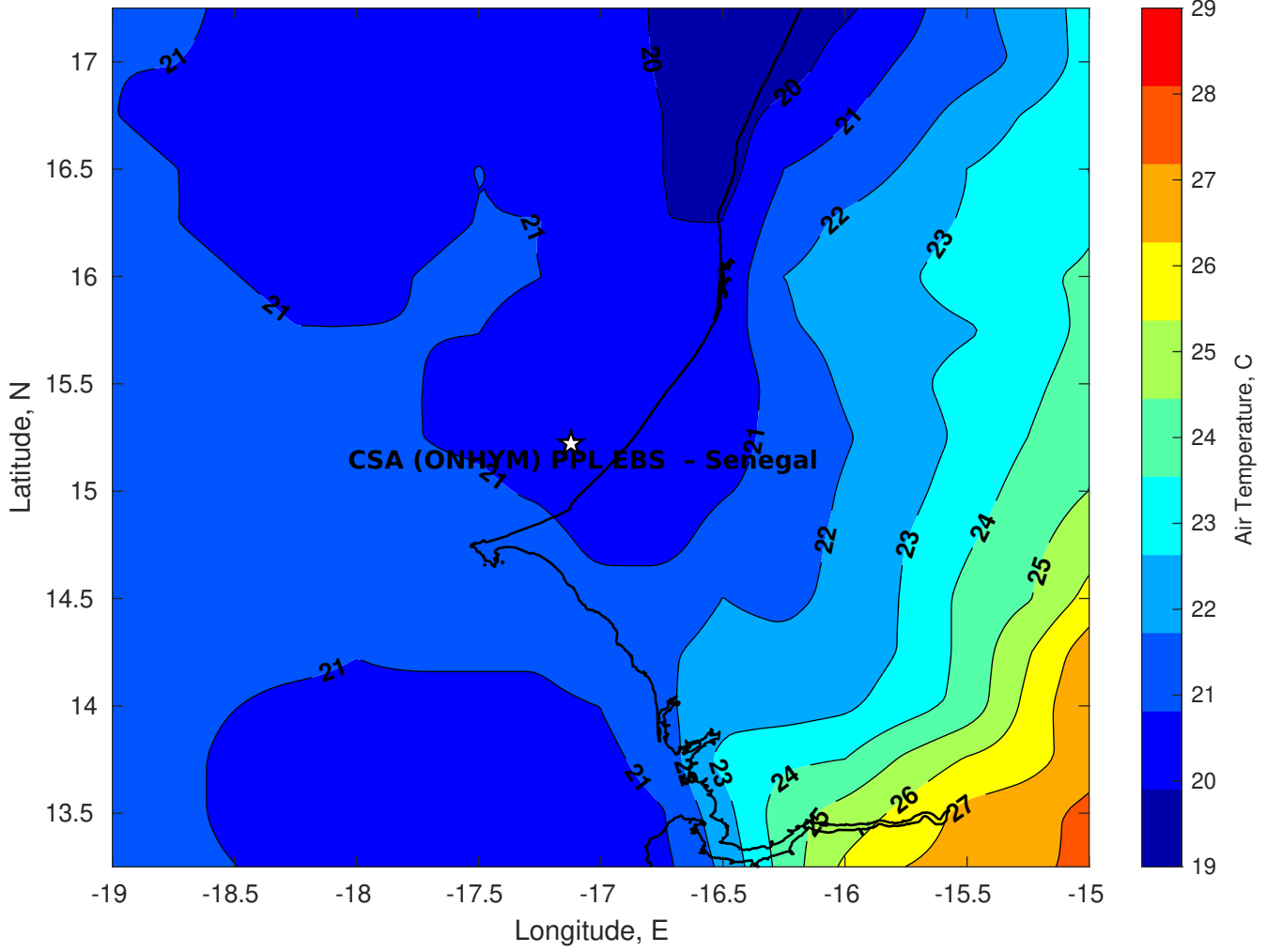
Surface Pressure (mb) for CSA (ONHYM) PPL EBS - Senegal at 13-Apr-2025 00:00:00



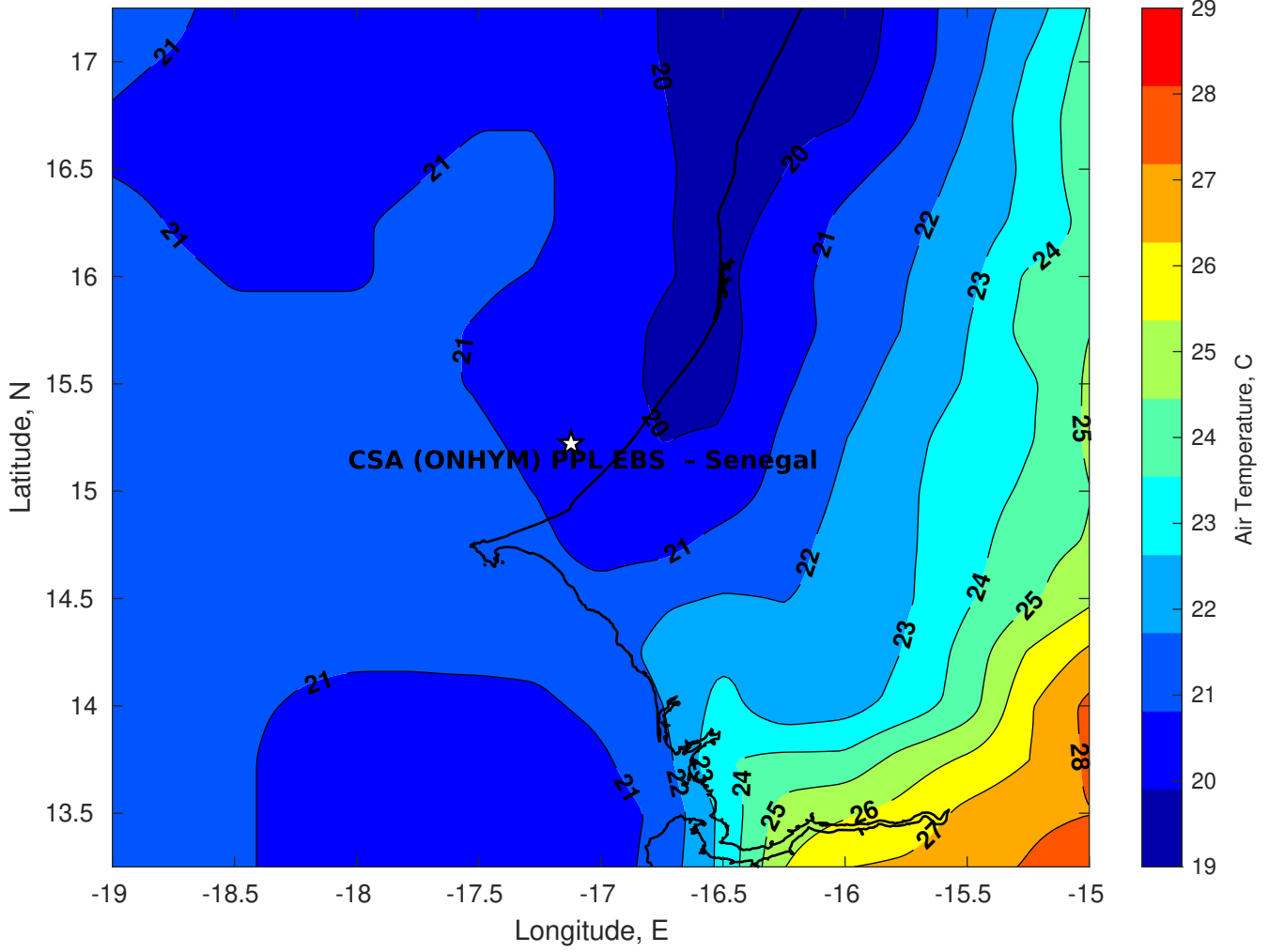
Surface Pressure (mb) for CSA (ONHYM) PPL EBS - Senegal at 14-Apr-2025 00:00:00



Air Temperature (C) for CSA (ONHYM) PPL EBS - Senegal at 12-Apr-2025



Air Temperature (C) for CSA (ONHYM) PPL EBS - Senegal at 12-Apr-2025



Air Temperature (C) for CSA (ONHYM) PPL EBS - Senegal at 12-Apr-2025

