

\*\*\*\*\*

Marine Weather Forecast for CSA (ONHYM) PPL EBS - Senegal

Forecast valid as of 13-Apr-2025 0800 GMT

\*\*\*\*\*

All times are local.

Today

Winds: N, 15-20 kts.

Waves: NW, 5-6 feet, 10-11 sec.

No currents available.

Tonight

Winds: N, 15-20 kts.

Waves: NW, 5-6 feet, 9-10 sec.

No currents available.

Monday

Winds: N, 15-20 kts.

Waves: NW, 5-6 feet, 9-10 sec.

No currents available.

Monday Night

Winds: N, 10-15 kts.

Waves: NW, 5-6 feet, 8-9 sec.

No currents available.

Tuesday

Winds: N, 10-15 kts.

Waves: NW, 5-6 feet, 8-9 sec.

No currents available.

Tuesday Night

Winds: NW, 10-15 kts.

Waves: NW, 4-5 feet, 8-9 sec.

No currents available.

Wednesday

Winds: N, 10-15 kts.

Waves: N, 4-5 feet, 8-9 sec.

No currents available.

Wednesday Night

Winds: N, 10-15 kts.

Waves: N, 4-5 feet, 8-9 sec.

No currents available.

Thursday

Winds: N, 10-15 kts.

Waves: N, 4-5 feet, 8-9 sec.

No currents available.

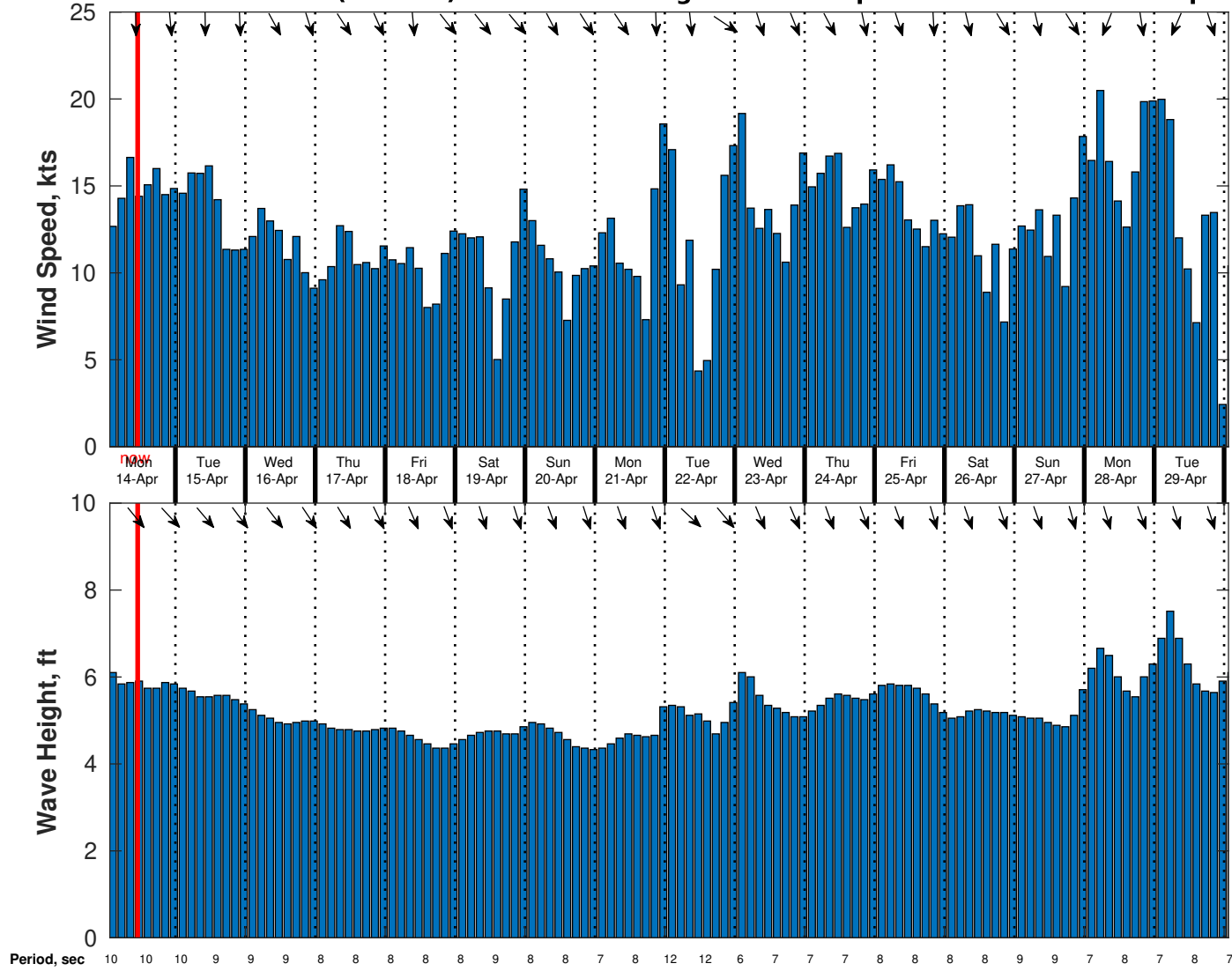
Thursday Night

Winds: NW, 10-15 kts.

Waves: N, 4-5 feet, 8-9 sec.

No currents available.

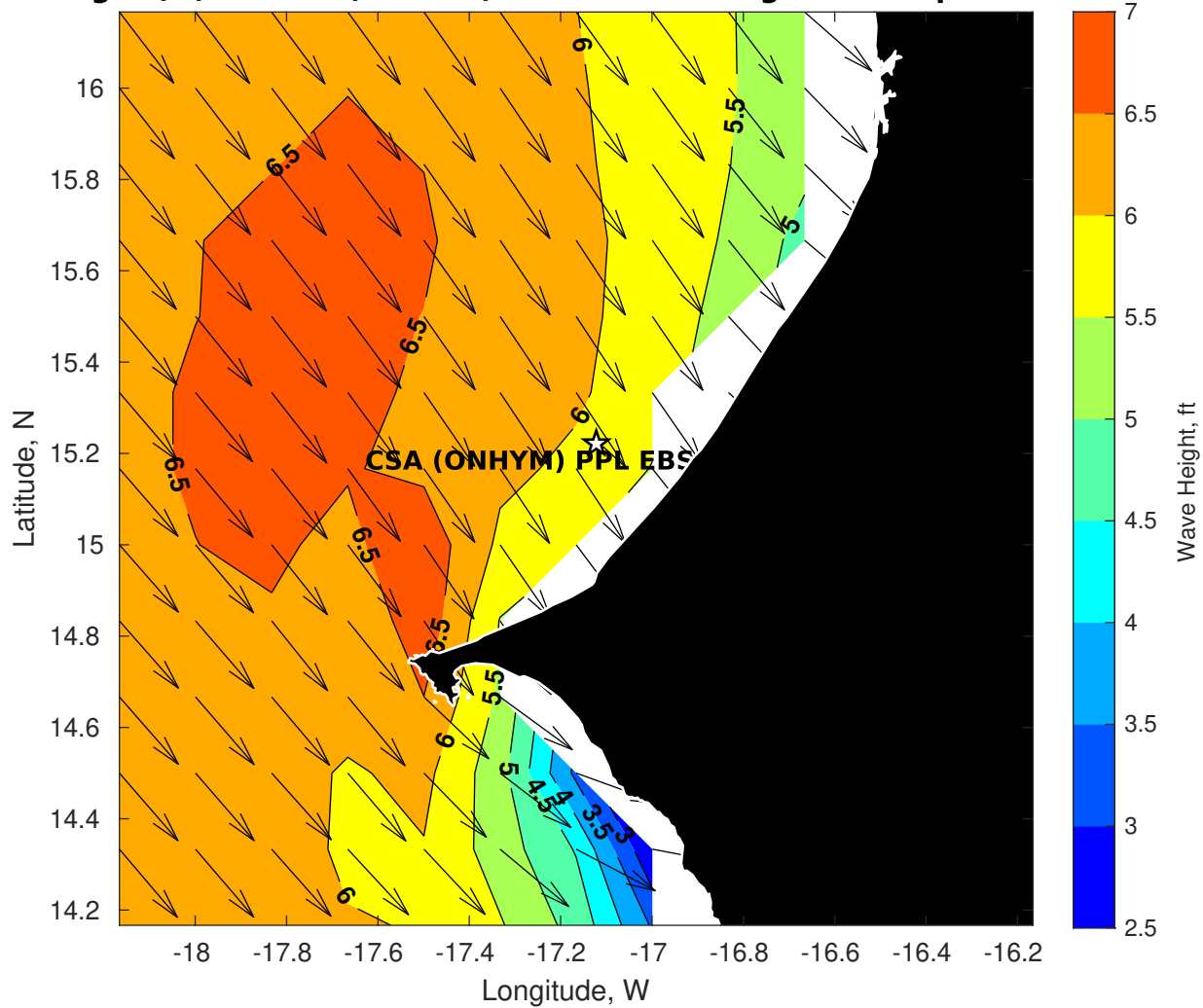
**Wind & Wave Forecast for CSA (ONHYM) PPL EBS - Senegal from 13-Apr-2025 01:00:00 to 29-Apr-2025 01:00:00**



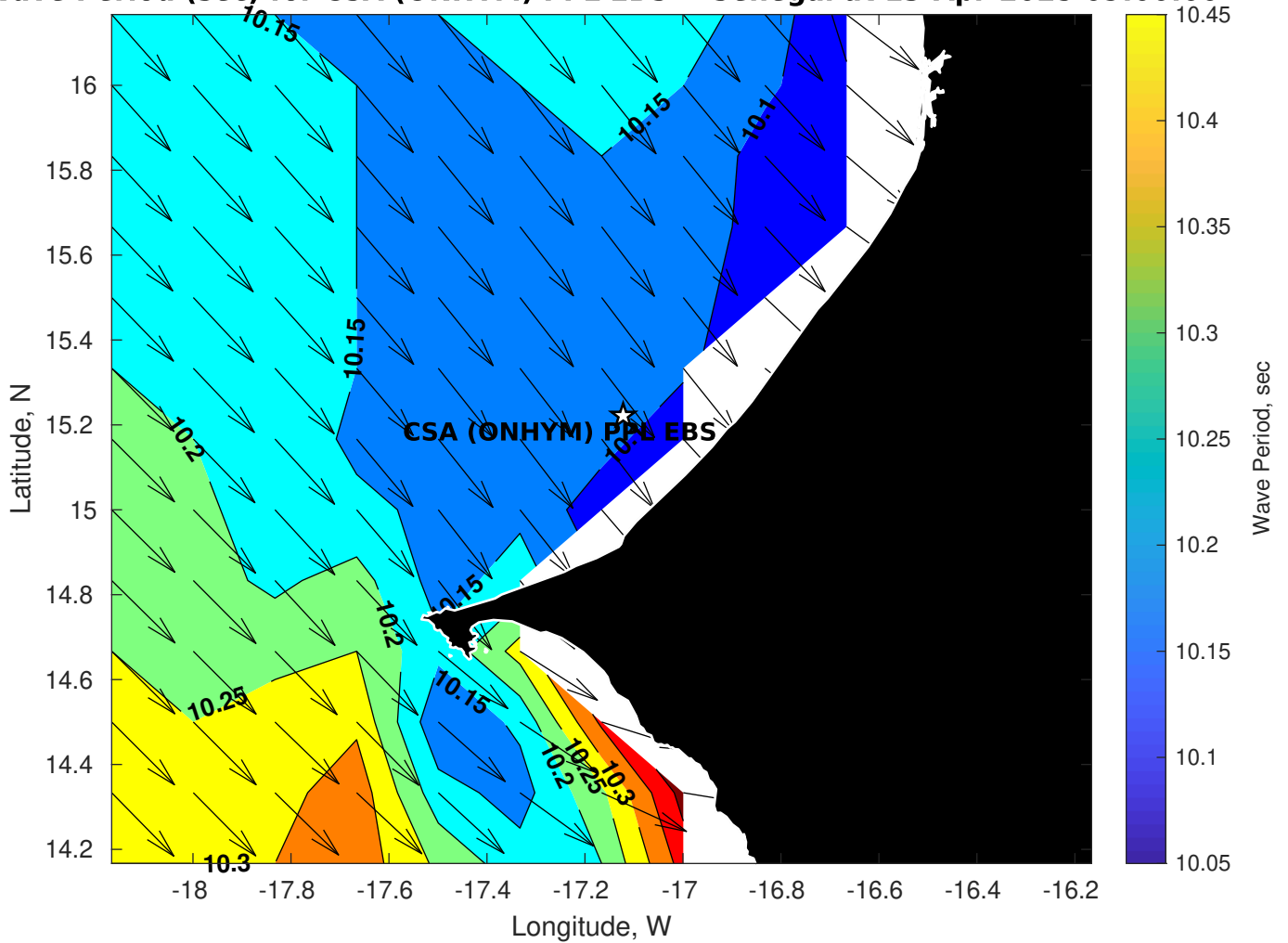
**Met Forecast for CSA (ONHYM) PPL EBS - Senegal from 13-Apr-2025 00:00:00 to 20-Apr-2025 00:00:00**



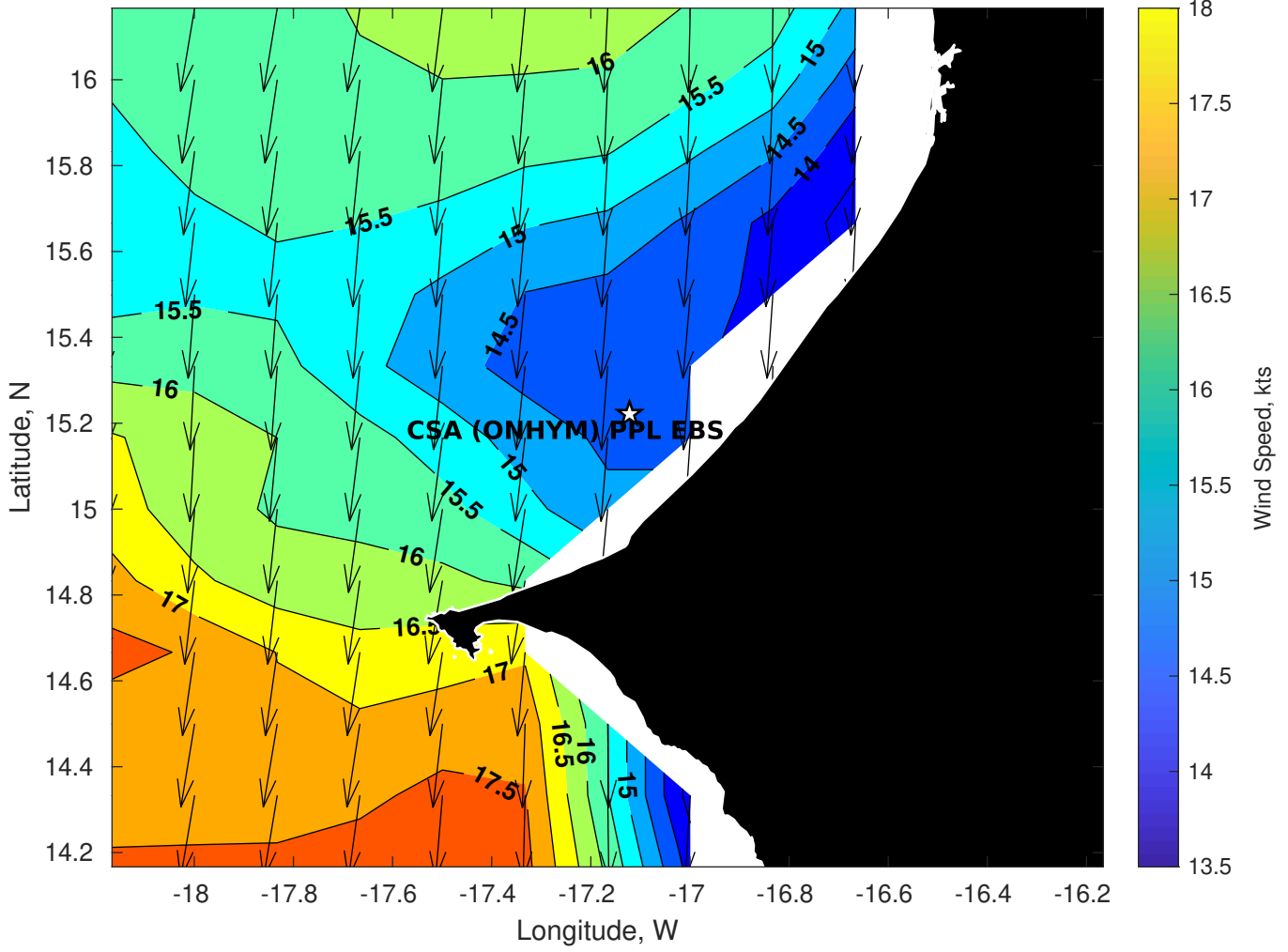
### Wave Height (ft) for CSA (ONHYM) PPL EBS - Senegal at 13-Apr-2025 09:00:00



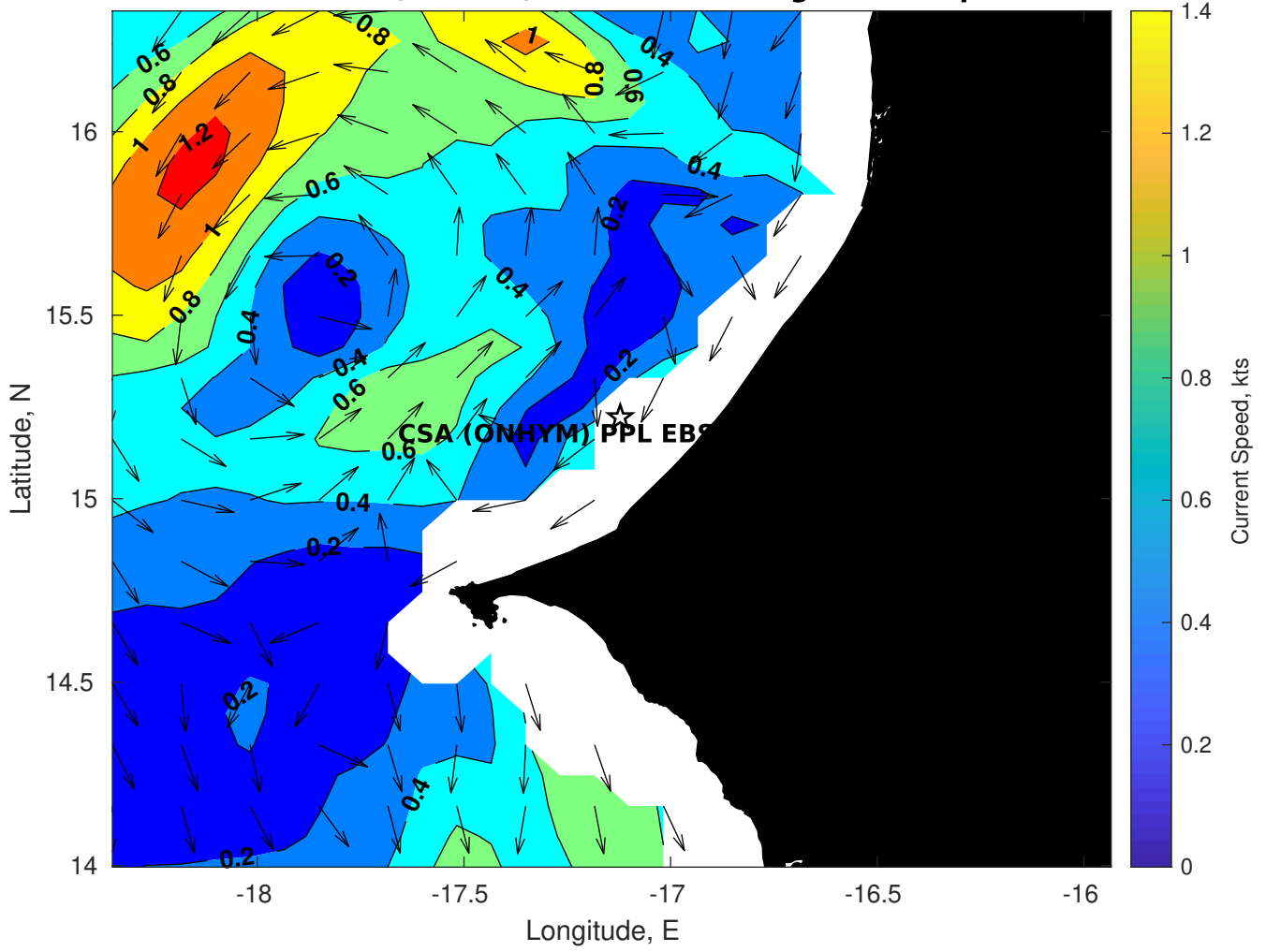
**Wave Period (sec) for CSA (ONHYM) PPL EBS - Senegal at 13-Apr-2025 09:00:00**



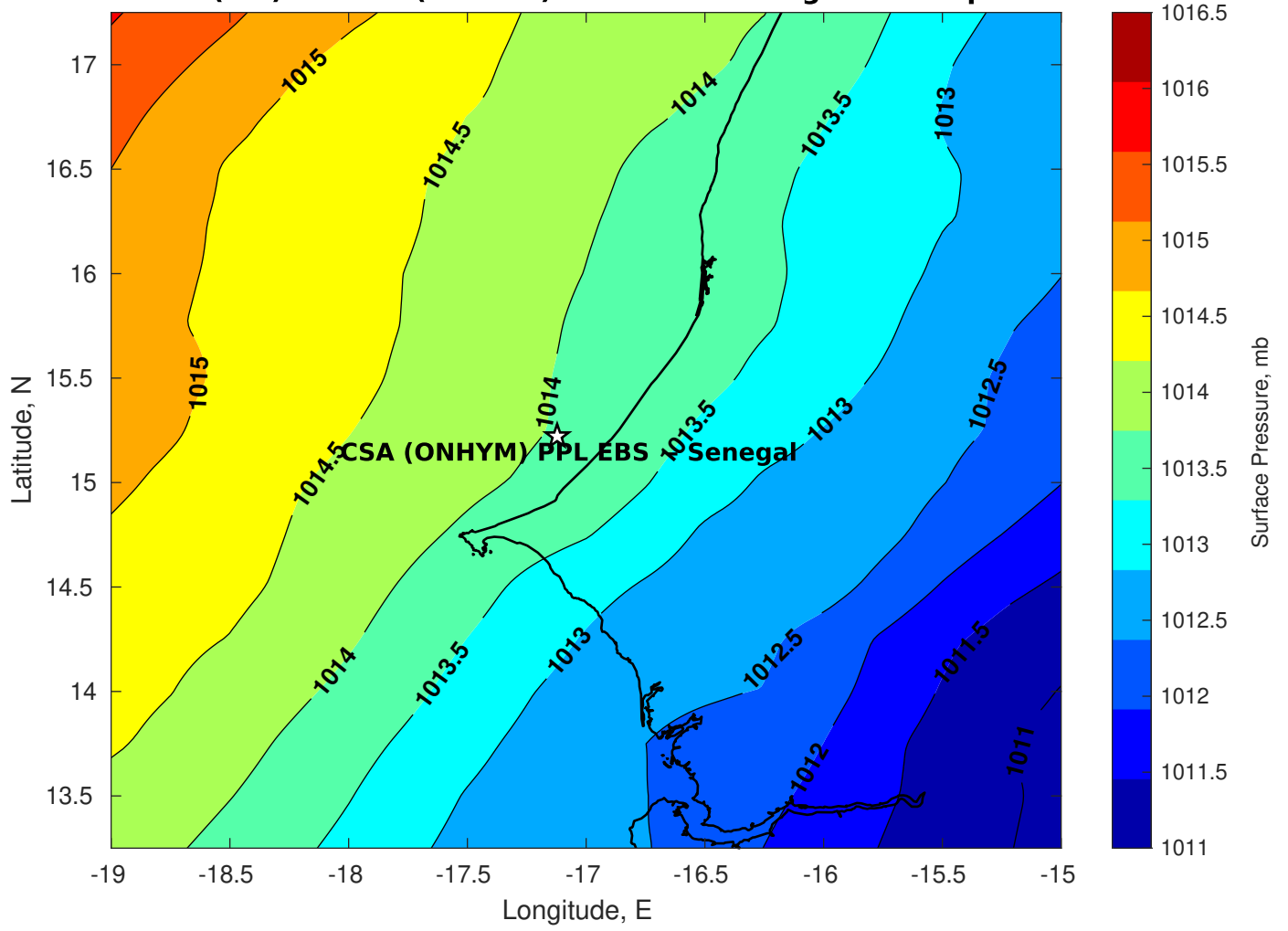
**Winds (kts) for CSA (ONHYM) PPL EBS - Senegal at 13-Apr-2025 09:00:00**



**Surface Currents for CSA (ONHYM) PPL EBS - Senegal at 12-Apr-2025 00:00:00**

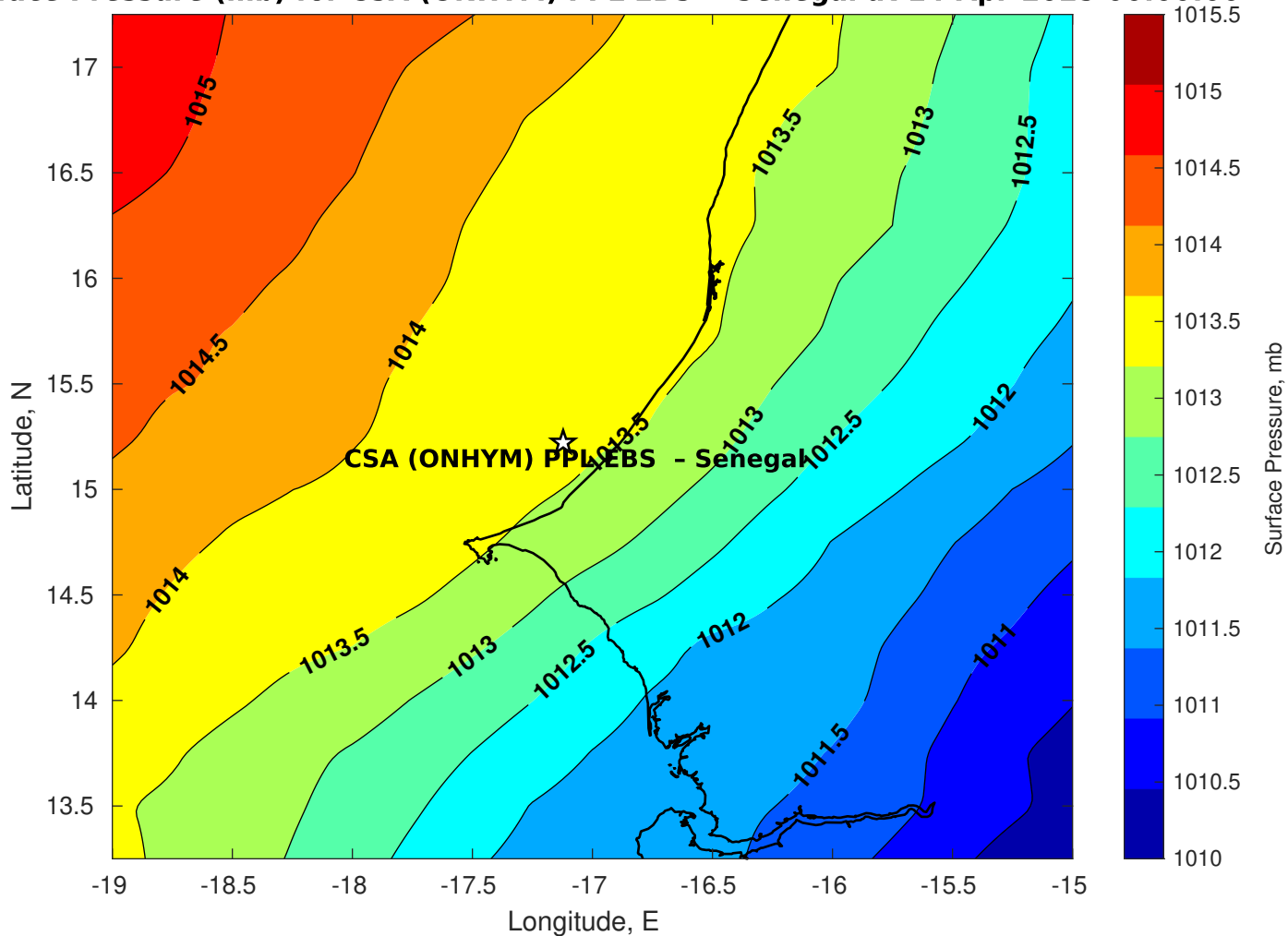


**Surface Pressure (mb) for CSA (ONHYM) PPL EBS - Senegal at 13-Apr-2025 00:00:00**

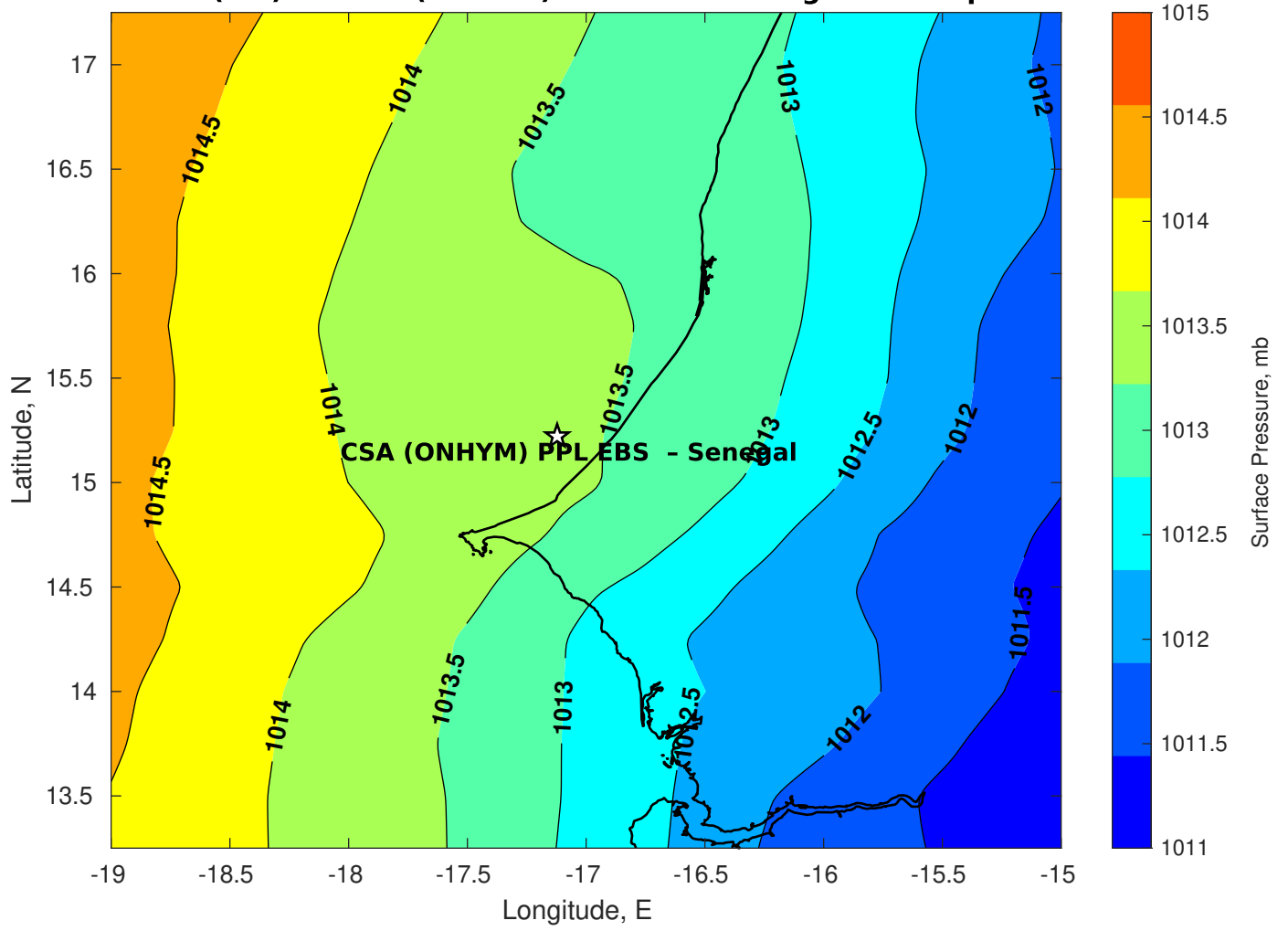




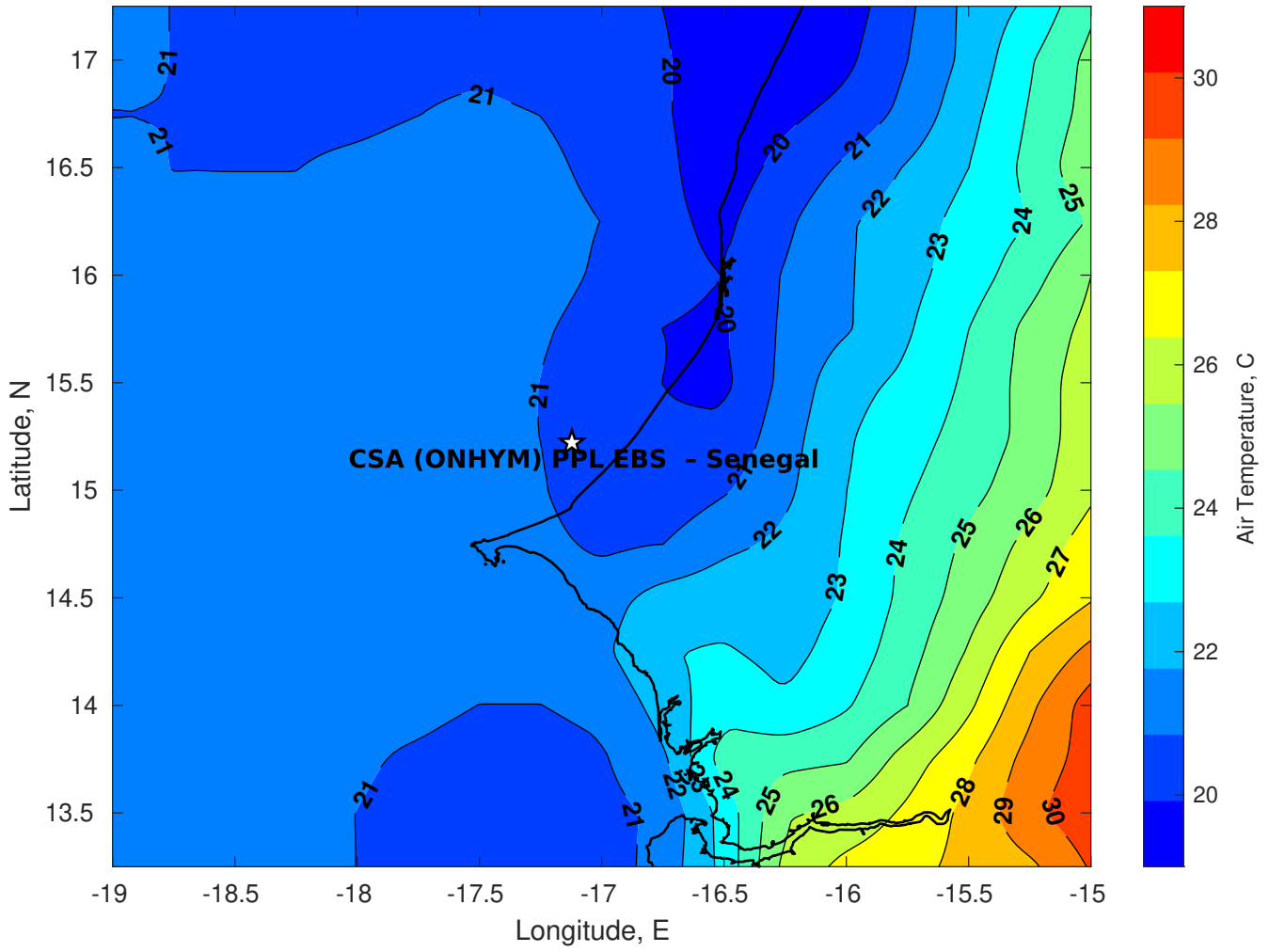
**Surface Pressure (mb) for CSA (ONHYM) PPL EBS - Senegal at 14-Apr-2025 00:00:00**



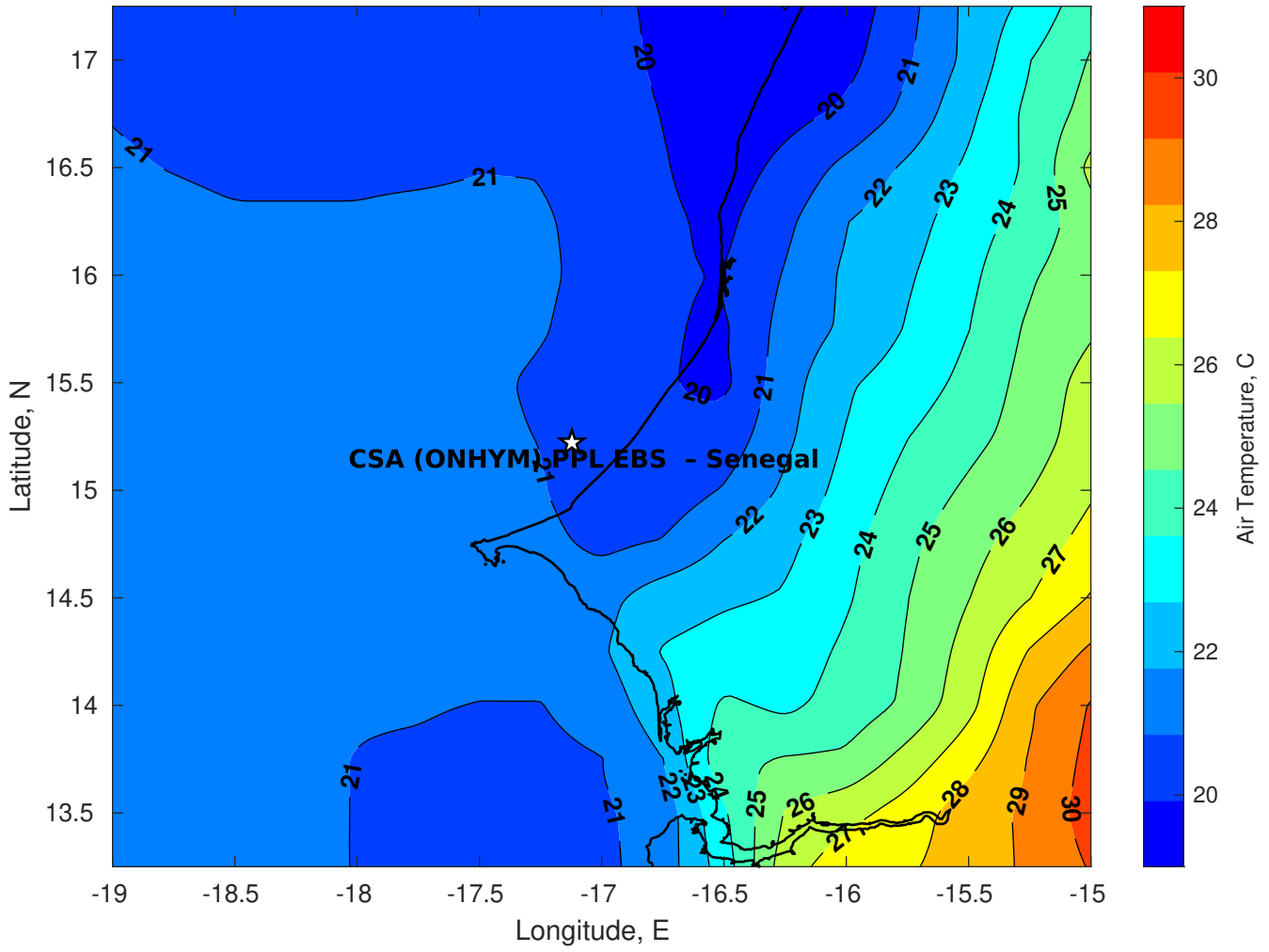
**Surface Pressure (mb) for CSA (ONHYM) PPL EBS - Senegal at 15-Apr-2025 00:00:00**



**Air Temperature (C) for CSA (ONHYM) PPL EBS - Senegal at 13-Apr-2025**



**Air Temperature (C) for CSA (ONHYM) PPL EBS - Senegal at 13-Apr-2025**



**Air Temperature (C) for CSA (ONHYM) PPL EBS - Senegal at 13-Apr-2025**

