

\*\*\*\*\*

Marine Weather Forecast for CSA (ONHYM) PPL EBS - Senegal

Forecast valid as of 25-Apr-2025 0800 GMT

\*\*\*\*\*

All times are local.

Today

Winds: N, 15-20 kts.

Waves: N, 5-6 feet, 7-8 sec.

No currents available.

Tonight

Winds: N, 10-15 kts.

Waves: N, 6-7 feet, 7-8 sec.

No currents available.

Saturday

Winds: NW, 10-15 kts.

Waves: NW, 6-7 feet, 14-15 sec.

No currents available.

Saturday Night

Winds: NW, 10-15 kts.

Waves: NW, 6-7 feet, 13-14 sec.

No currents available.

Sunday

Winds: NW, 10-15 kts.

Waves: NW, 6-7 feet, 12-13 sec.

No currents available.

Sunday Night

Winds: NW, 10-15 kts.

Waves: NW, 5-6 feet, 11-12 sec.

No currents available.

Monday

Winds: NW, 5-10 kts.

Waves: NW, 5-6 feet, 11-12 sec.

No currents available.

Monday Night

Winds: NW, 10-15 kts.

Waves: NW, 5-6 feet, 11-12 sec.

No currents available.

Tuesday

Winds: NW, 10-15 kts.

Waves: N, 5-6 feet, 11-12 sec.

No currents available.

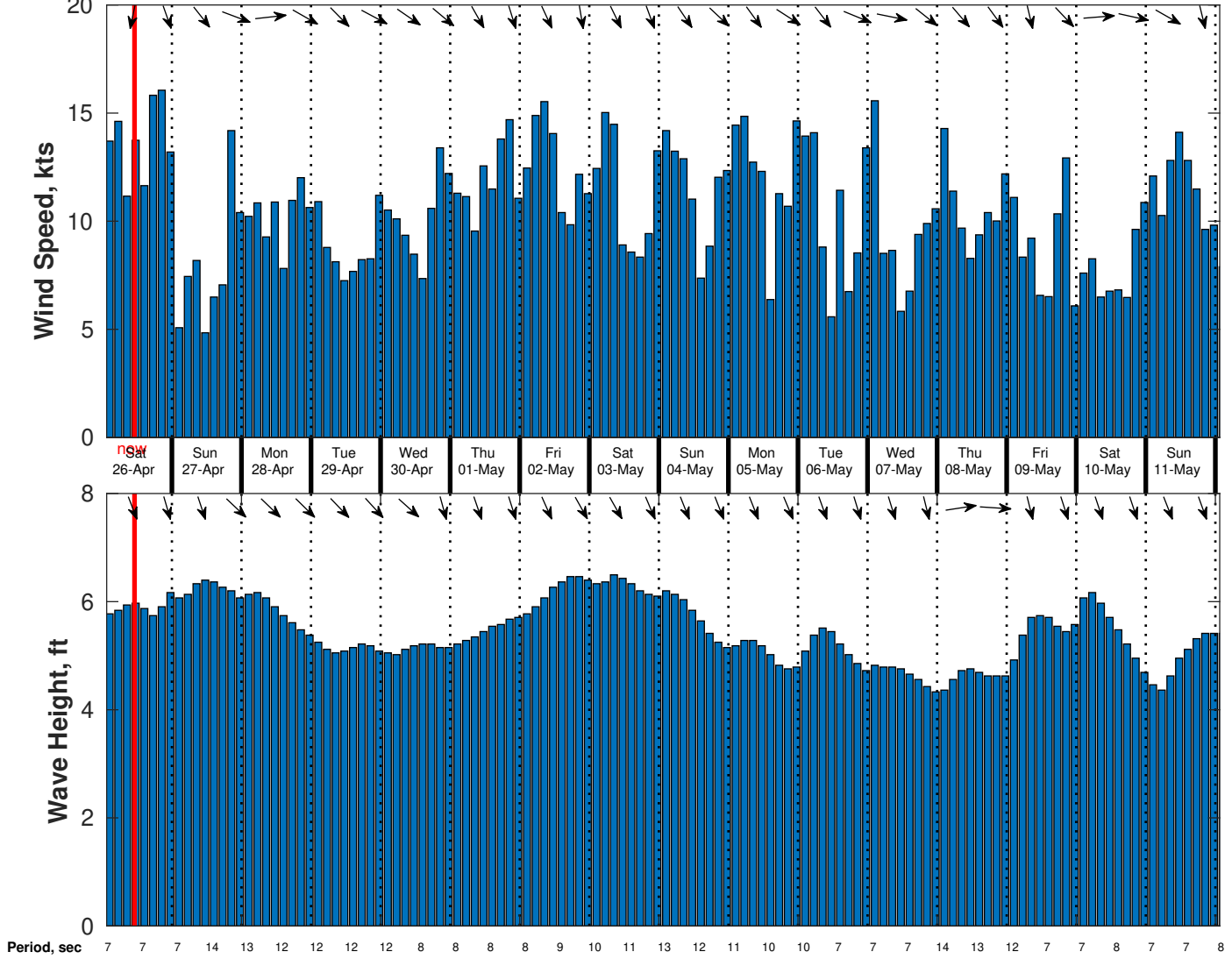
Tuesday Night

Winds: NW, 10-15 kts.

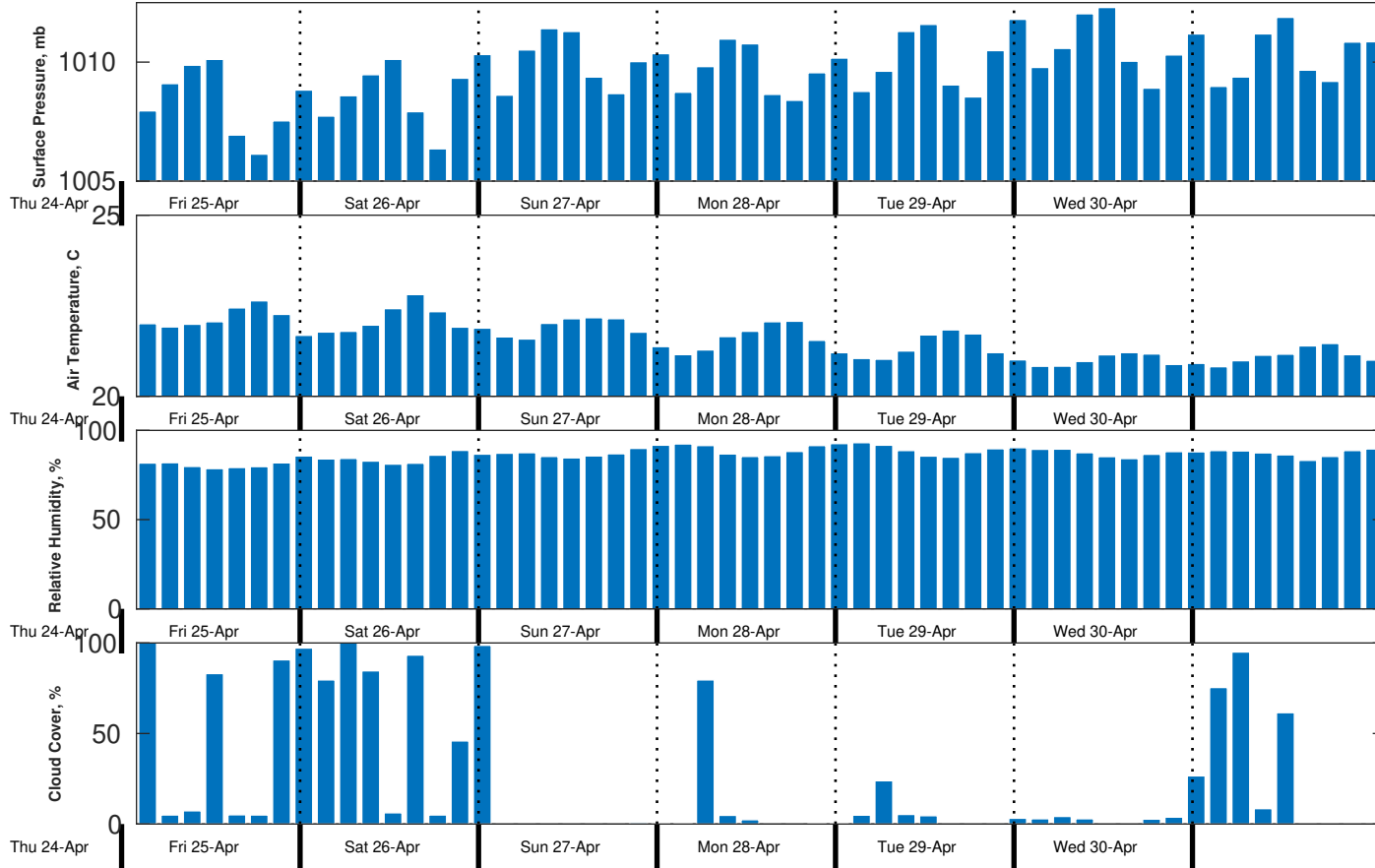
Waves: N, 5-6 feet, 7-8 sec.

No currents available.

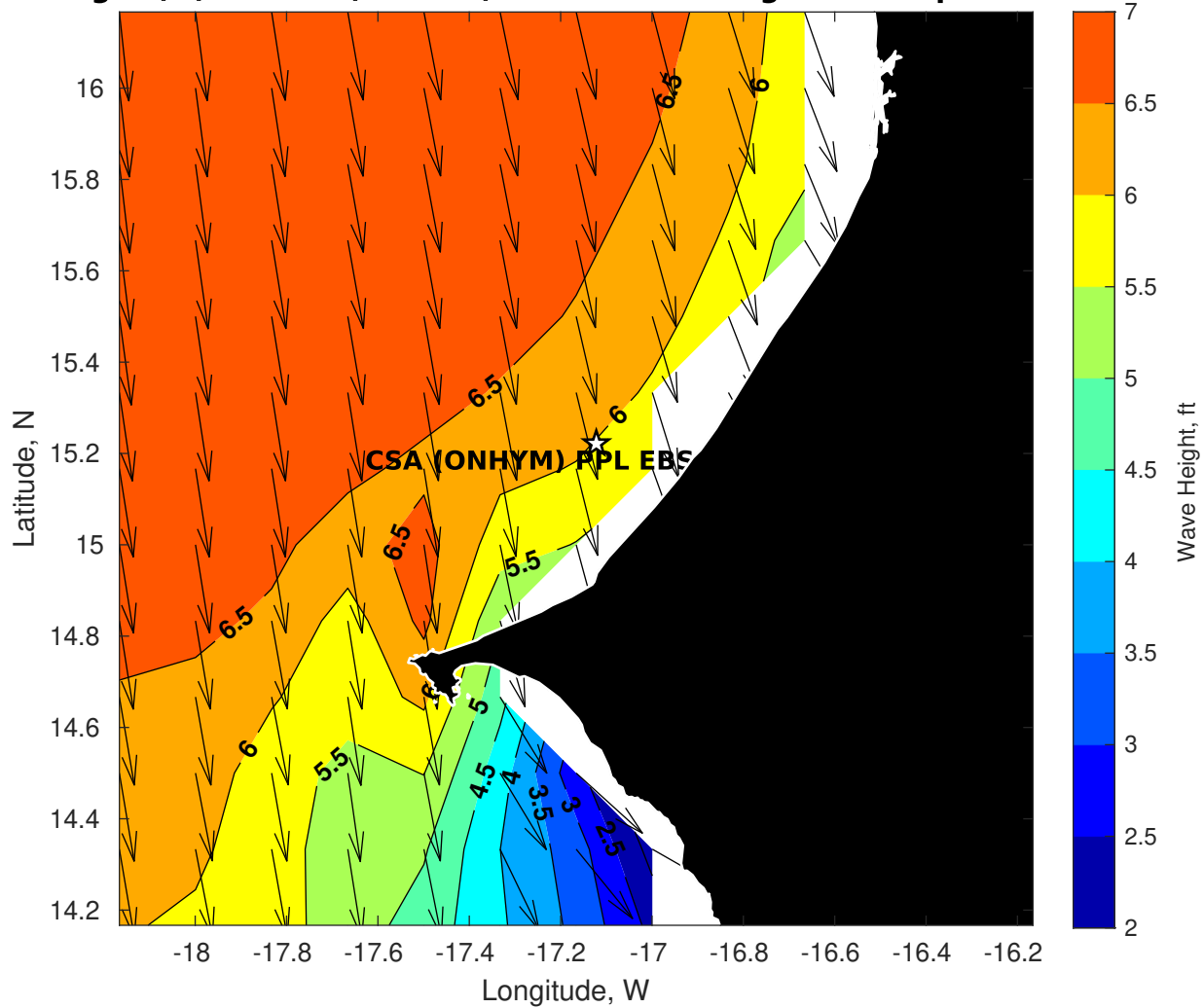
**Wind & Wave Forecast for CSA (ONHYM) PPL EBS - Senegal from 25-Apr-2025 01:00:00 to 11-May-2025 01:00:00**



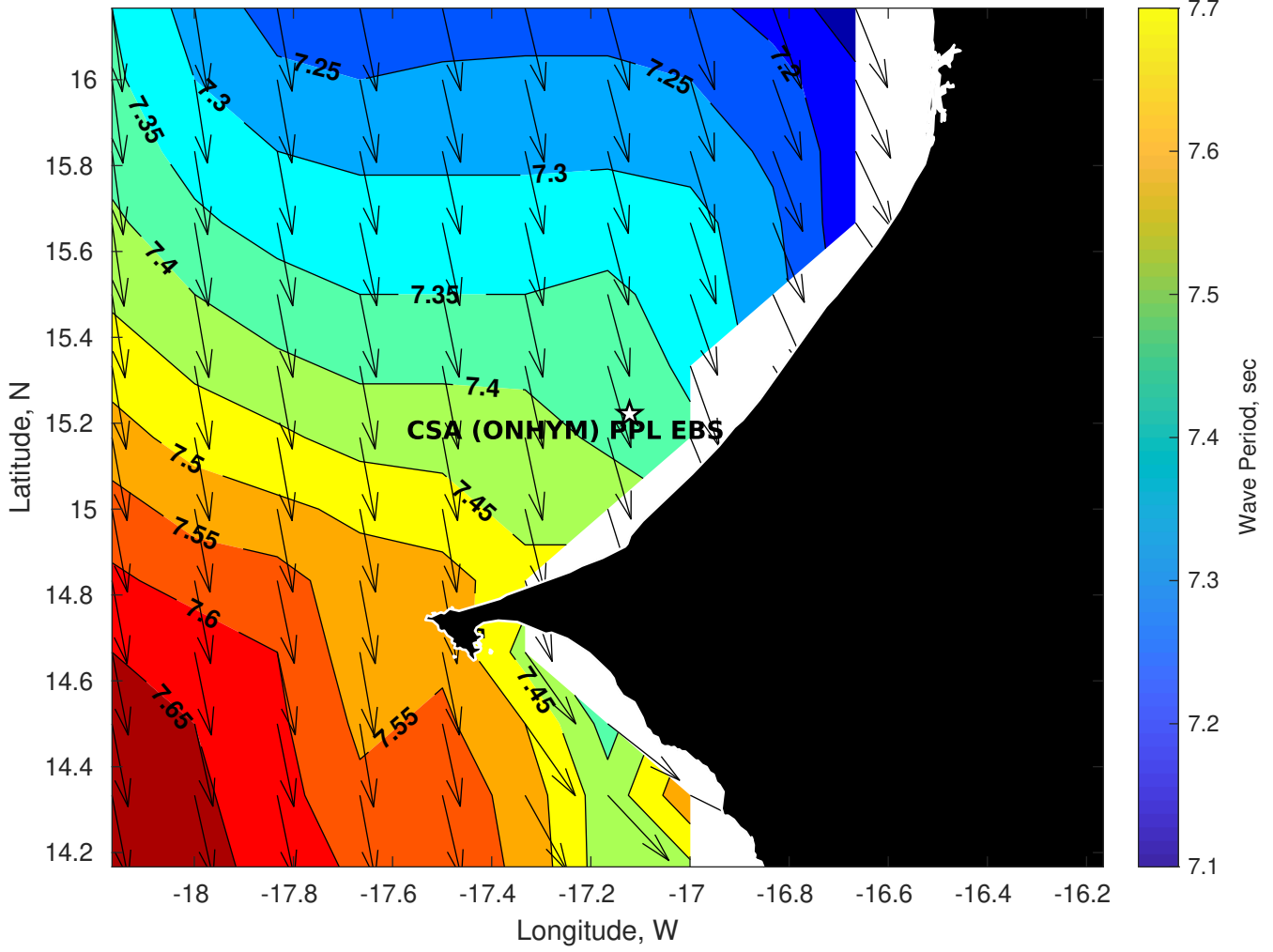
**Met Forecast for CSA (ONHYM) PPL EBS - Senegal from 25-Apr-2025 00:00:00 to 02-May-2025 00:00:00**



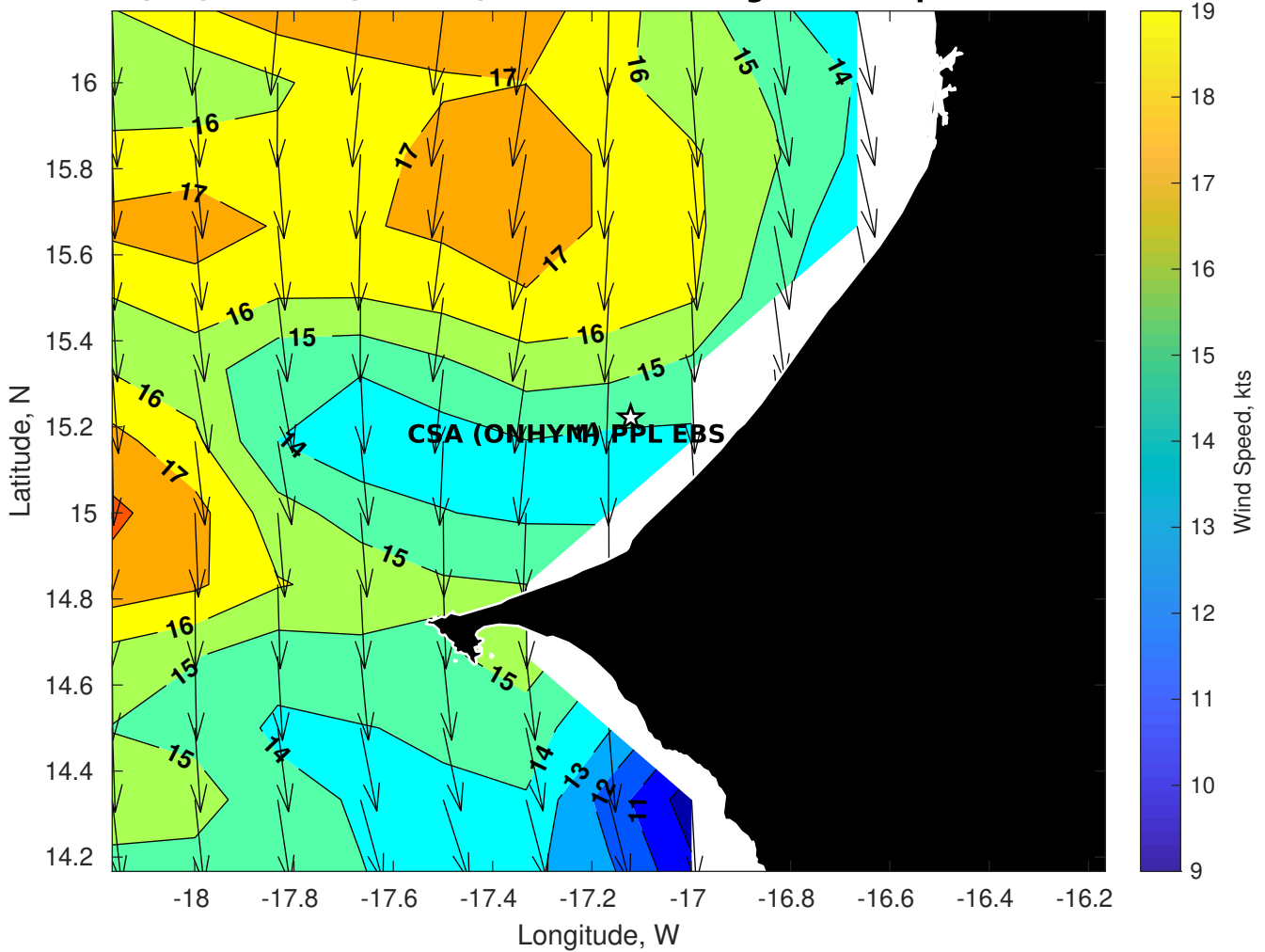
### Wave Height (ft) for CSA (ONHYM) PPL EBS - Senegal at 25-Apr-2025 09:00:00



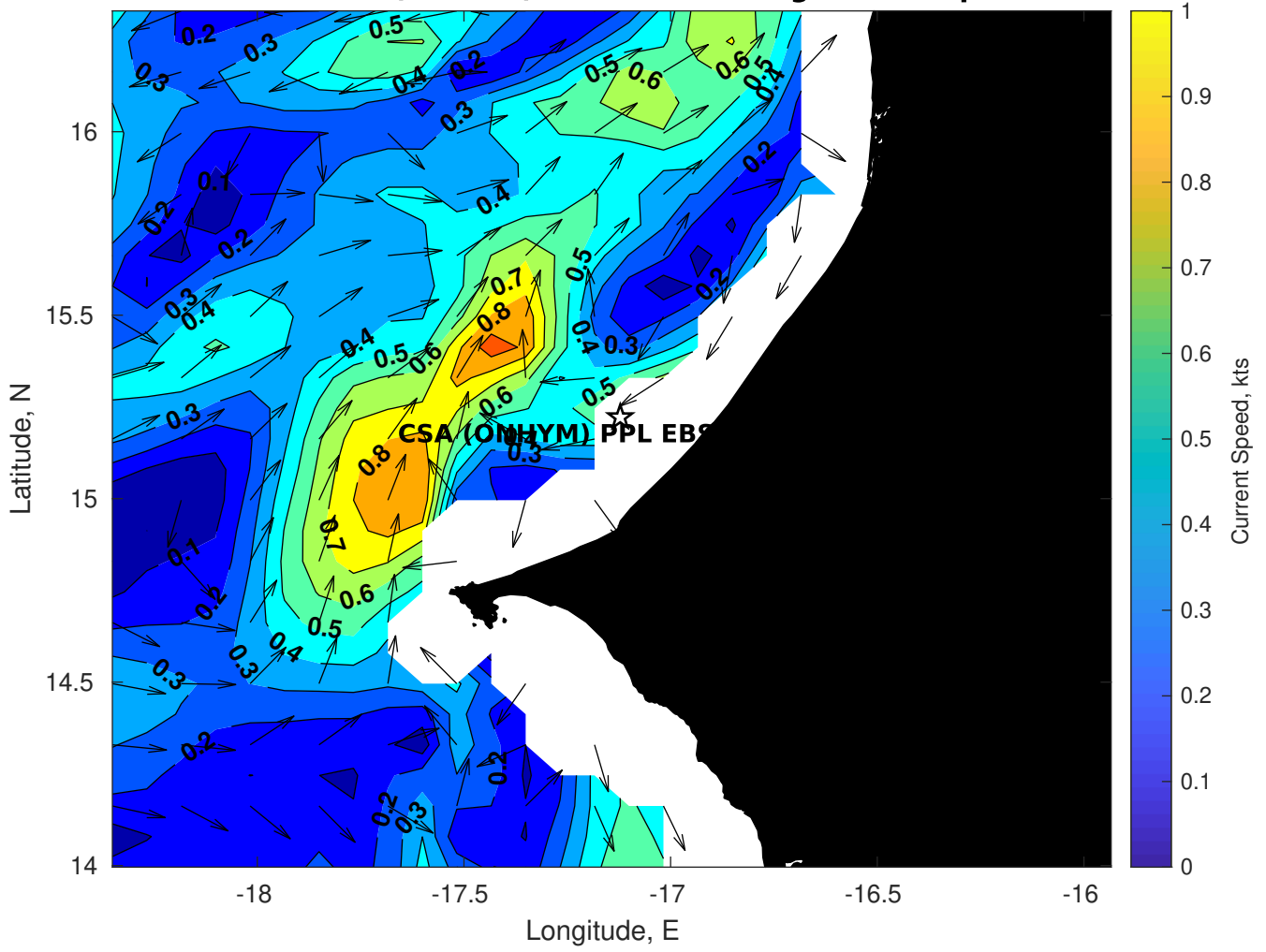
**Wave Period (sec) for CSA (ONHYM) PPL EBS - Senegal at 25-Apr-2025 09:00:00**



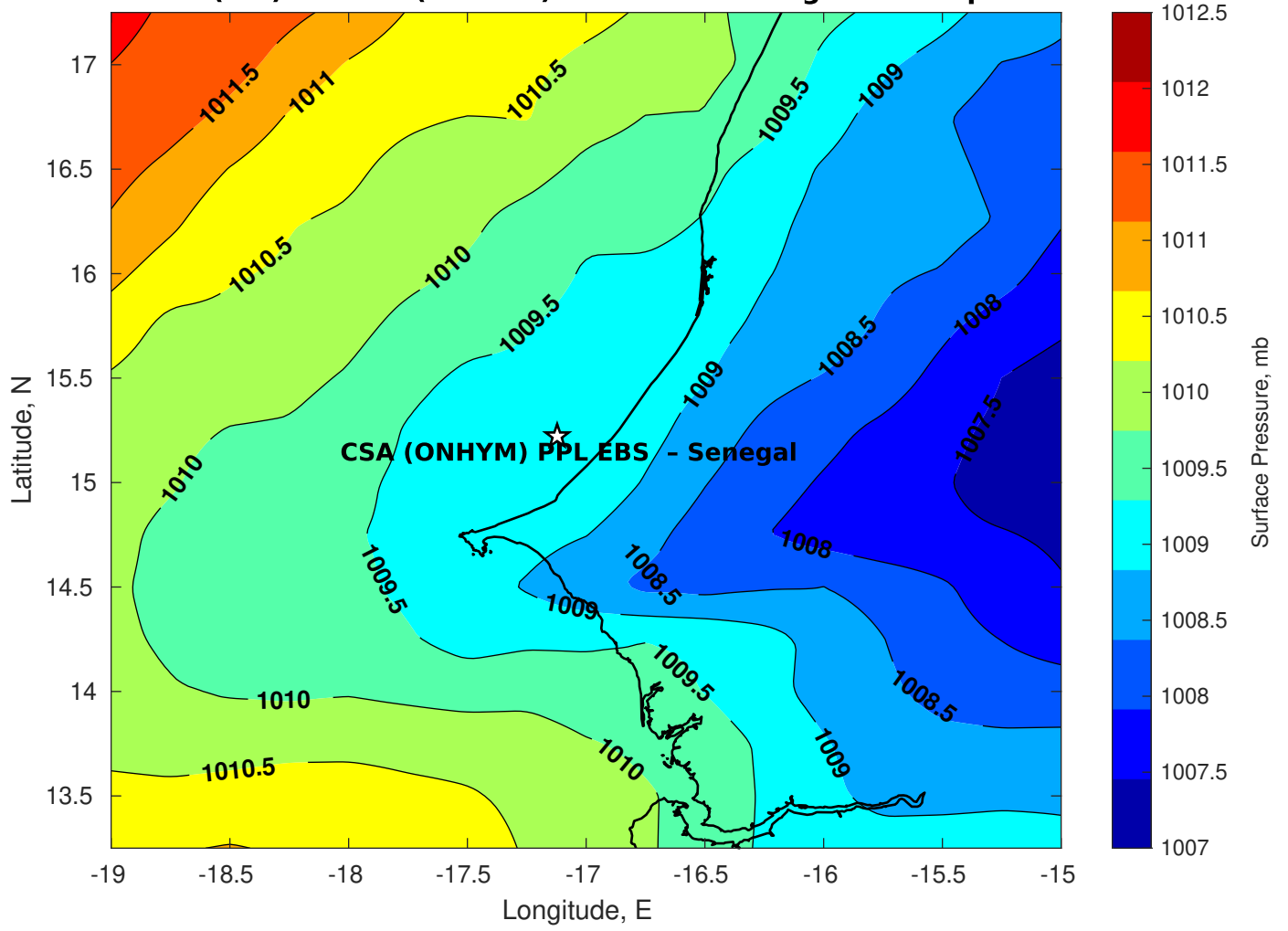
**Winds (kts) for CSA (ONHYM) PPL EBS - Senegal at 25-Apr-2025 09:00:00**



**Surface Currents for CSA (ONHYM) PPL EBS - Senegal at 24-Apr-2025 00:00:00**

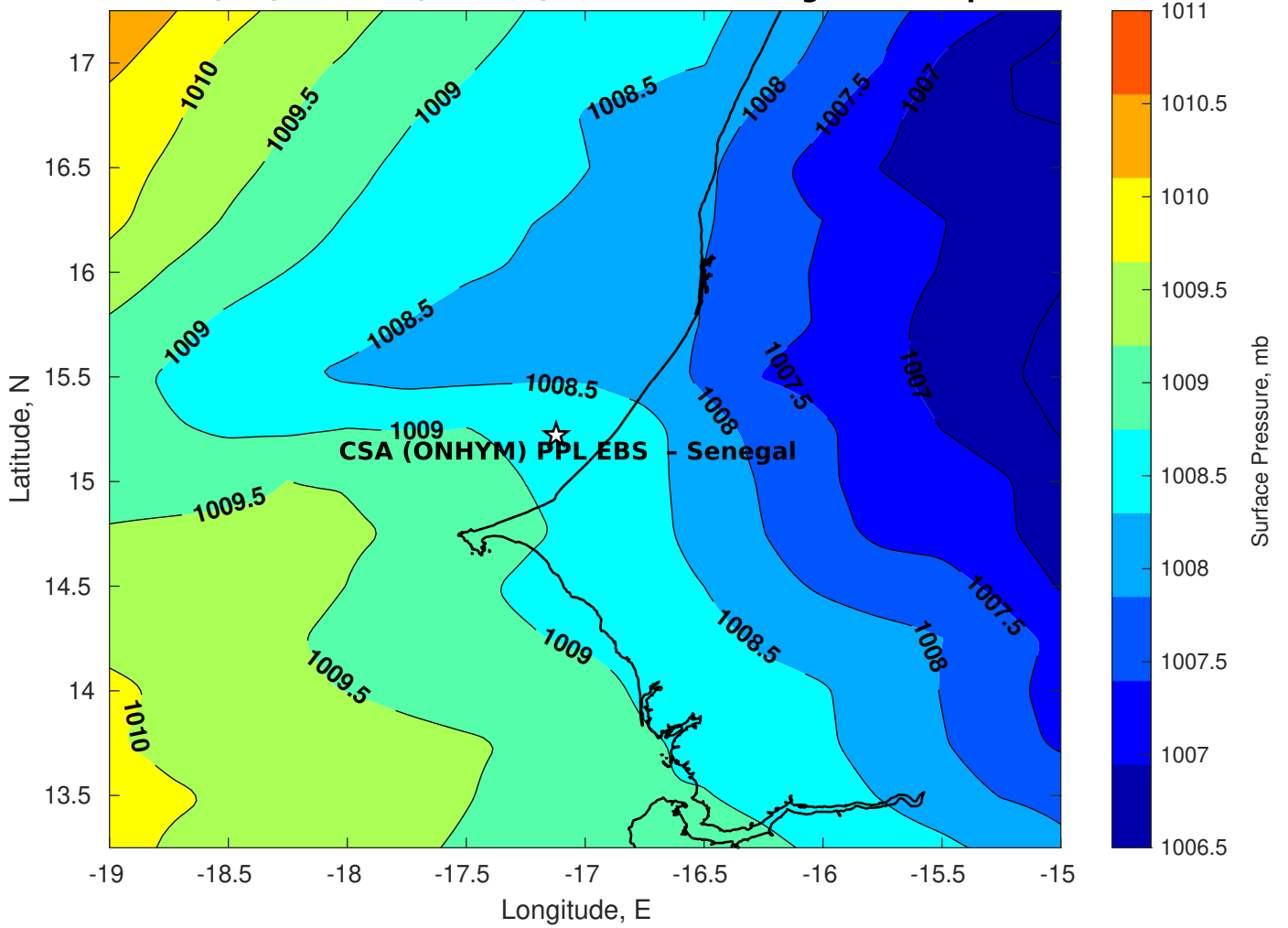


**Surface Pressure (mb) for CSA (ONHYM) PPL EBS - Senegal at 25-Apr-2025 00:00:00**

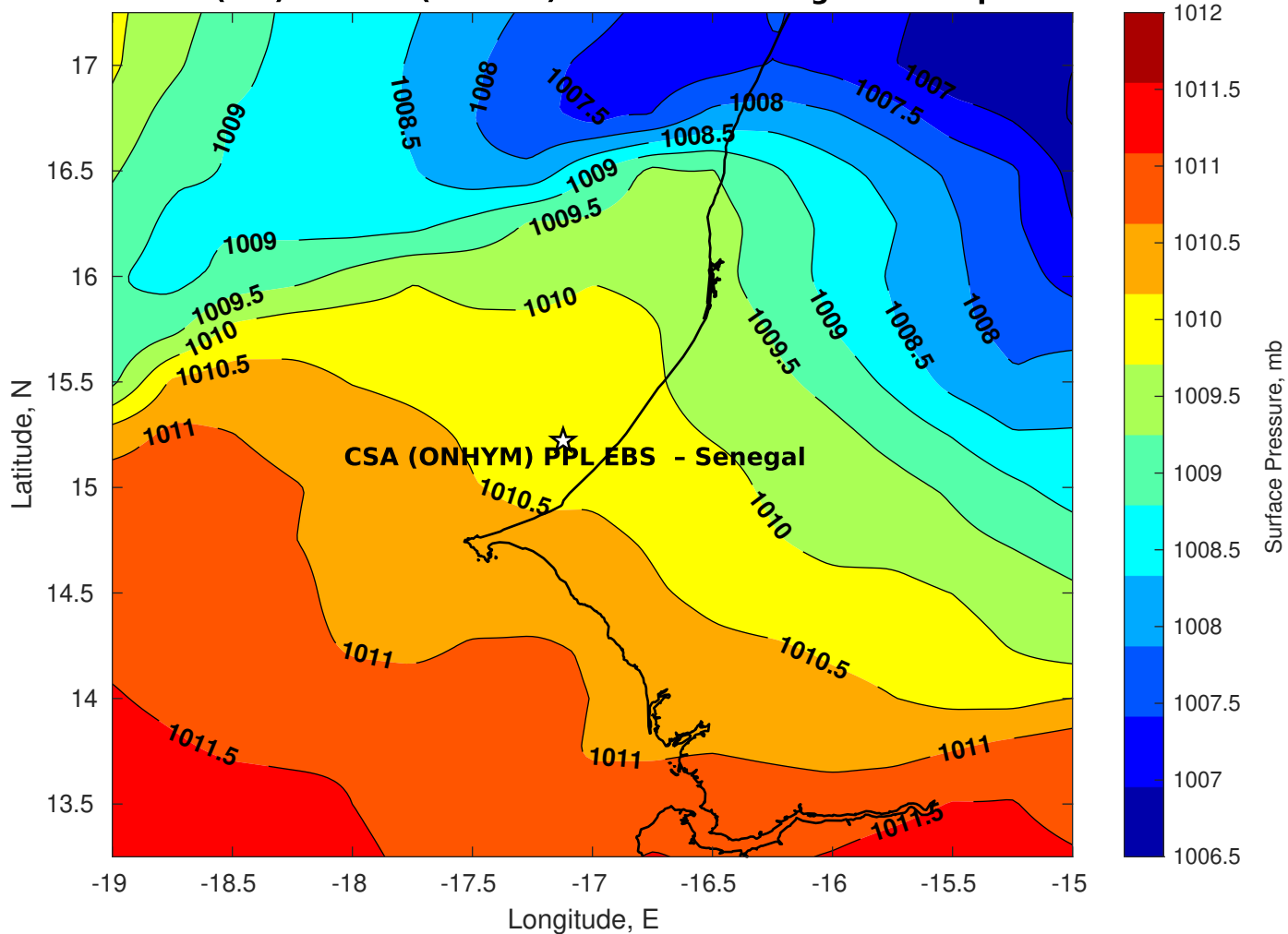




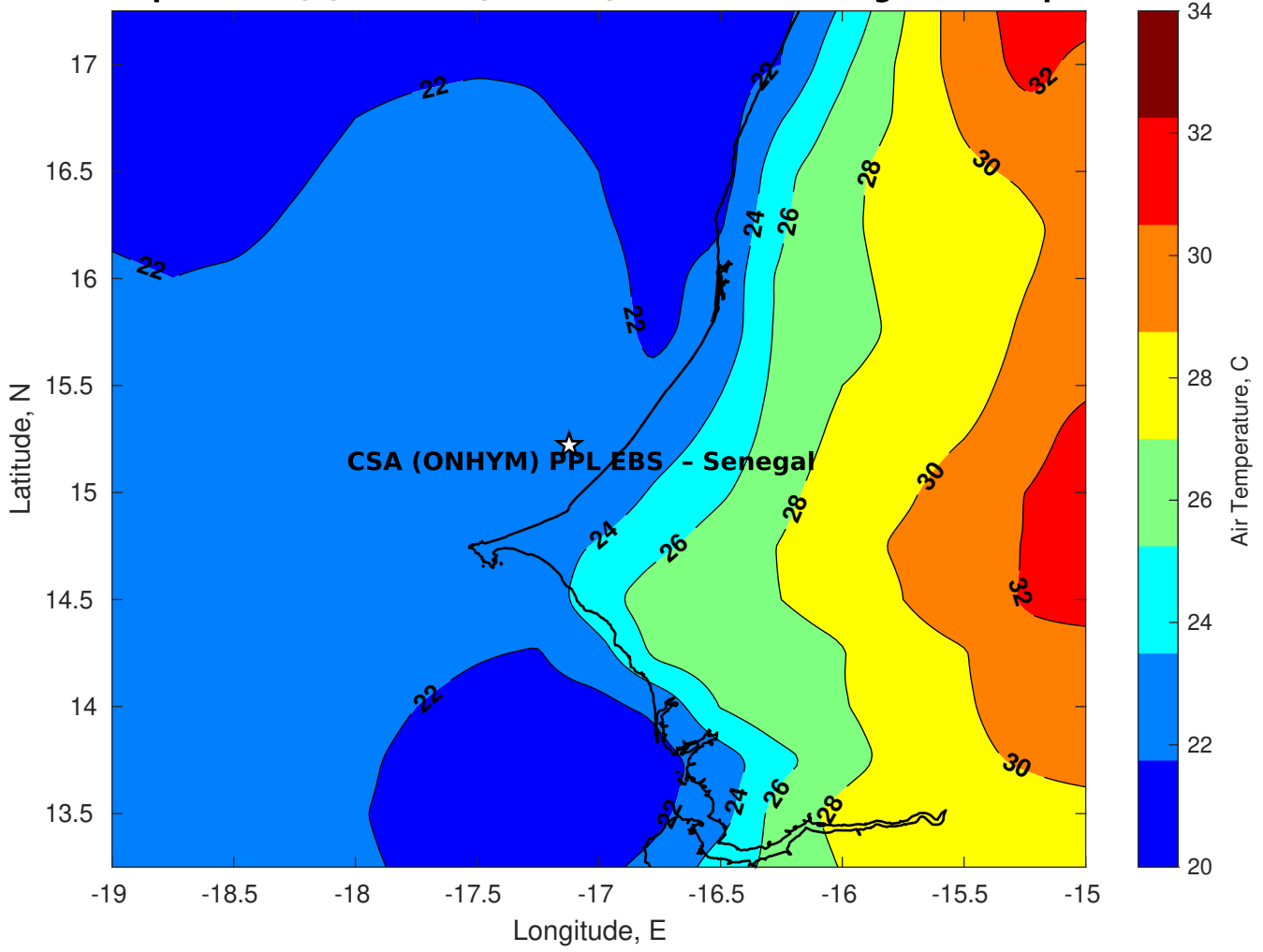
**Surface Pressure (mb) for CSA (ONHYM) PPL EBS - Senegal at 26-Apr-2025 00:00:00**



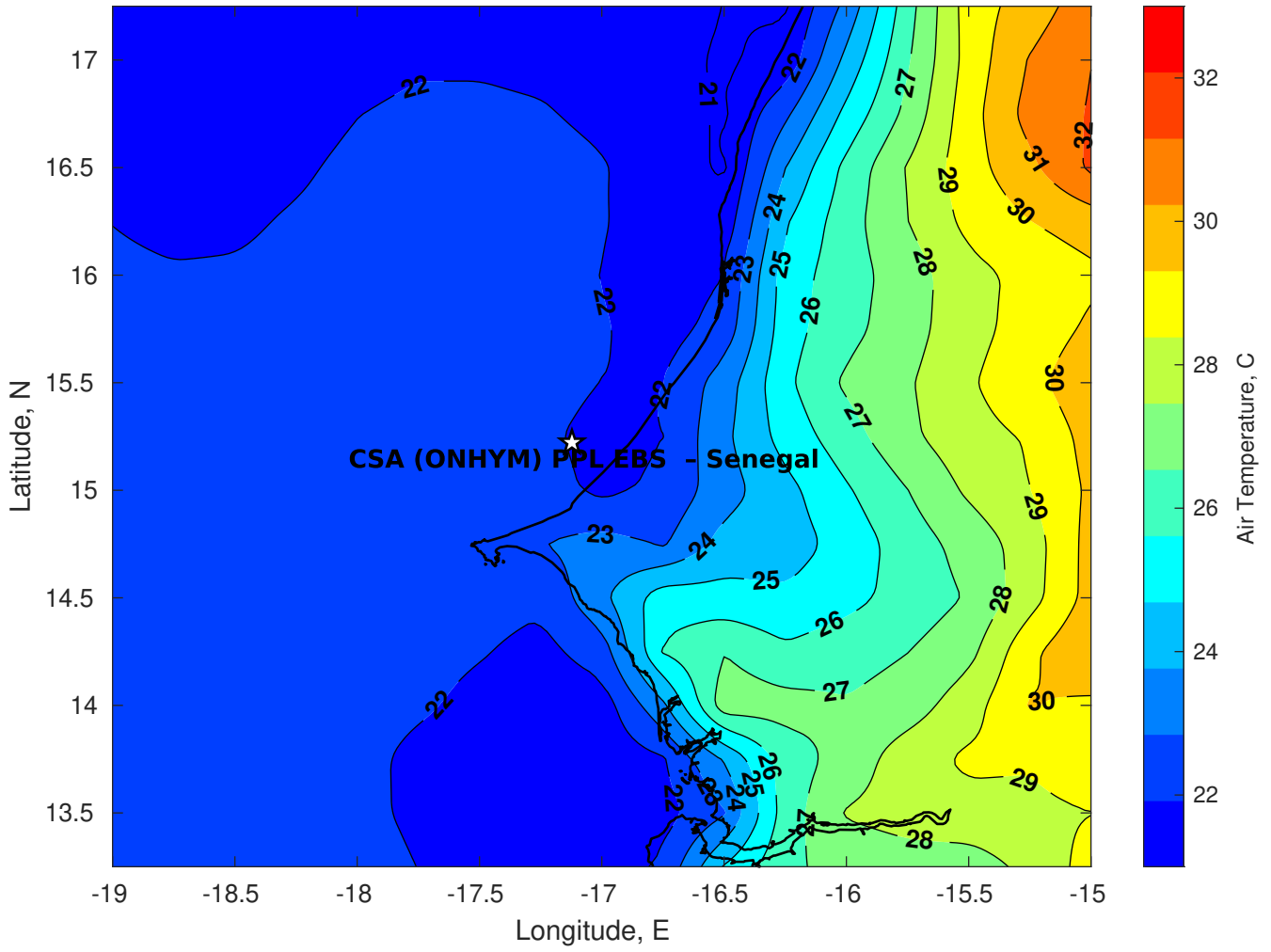
**Surface Pressure (mb) for CSA (ONHYM) PPL EBS - Senegal at 27-Apr-2025 00:00:00**



**Air Temperature (C) for CSA (ONHYM) PPL EBS - Senegal at 25-Apr-2025**



### Air Temperature (C) for CSA (ONHYM) PPL EBS - Senegal at 25-Apr-2025



**Air Temperature (C) for CSA (ONHYM) PPL EBS - Senegal at 25-Apr-2025**

