

\*\*\*\*\*

Marine Weather Forecast for CSA (ONHYM) PPL EBS - Senegal

Forecast valid as of 28-Oct-2025 0800 GMT

\*\*\*\*\*

All times are local.

Today

Winds: NE, 10-15 kts.

Waves: N, 3-4 feet, 10-11 sec.

No currents available.

Tonight

Winds: N, 5-10 kts.

Waves: N, 4-5 feet, 13-14 sec.

No currents available.

Wednesday

Winds: NW, 5-10 kts.

Waves: N, 5-6 feet, 12-13 sec.

No currents available.

Wednesday Night

Winds: NW, 10-15 kts.

Waves: N, 5-6 feet, 8-9 sec.

No currents available.

Thursday

Winds: NW, 10-15 kts.

Waves: N, 4-5 feet, 8-9 sec.

No currents available.

Thursday Night

Winds: NW, 10-15 kts.

Waves: N, 4-5 feet, 7-8 sec.

No currents available.

Friday

Winds: NW, 5-10 kts.

Waves: N, 4-5 feet, 9-10 sec.

No currents available.

Friday Night

Winds: NW, 10-15 kts.

Waves: N, 3-4 feet, 9-10 sec.

No currents available.

Saturday

Winds: NW, 10-15 kts.

Waves: N, 3-4 feet, 9-10 sec.

No currents available.

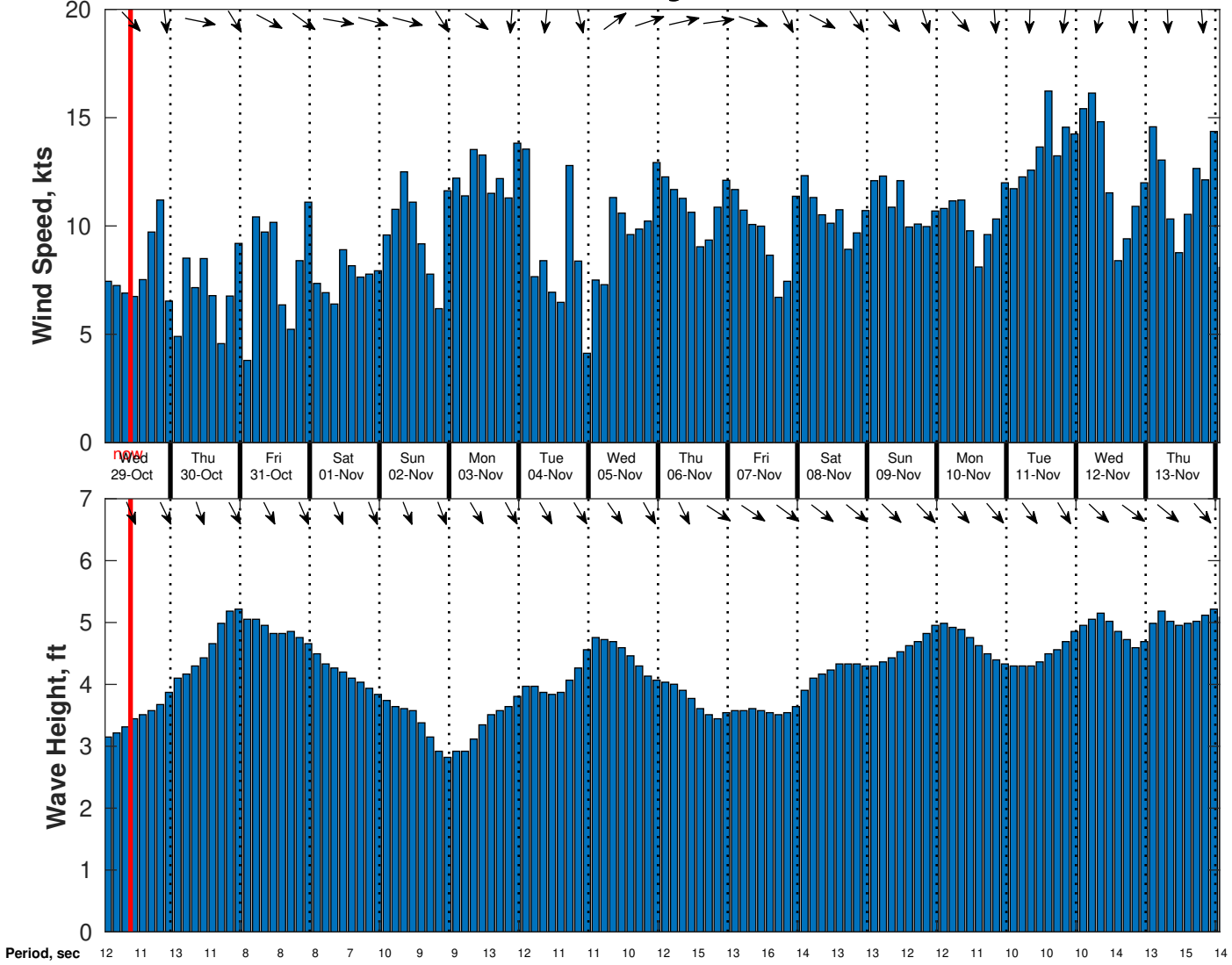
Saturday Night

Winds: NW, 10-15 kts.

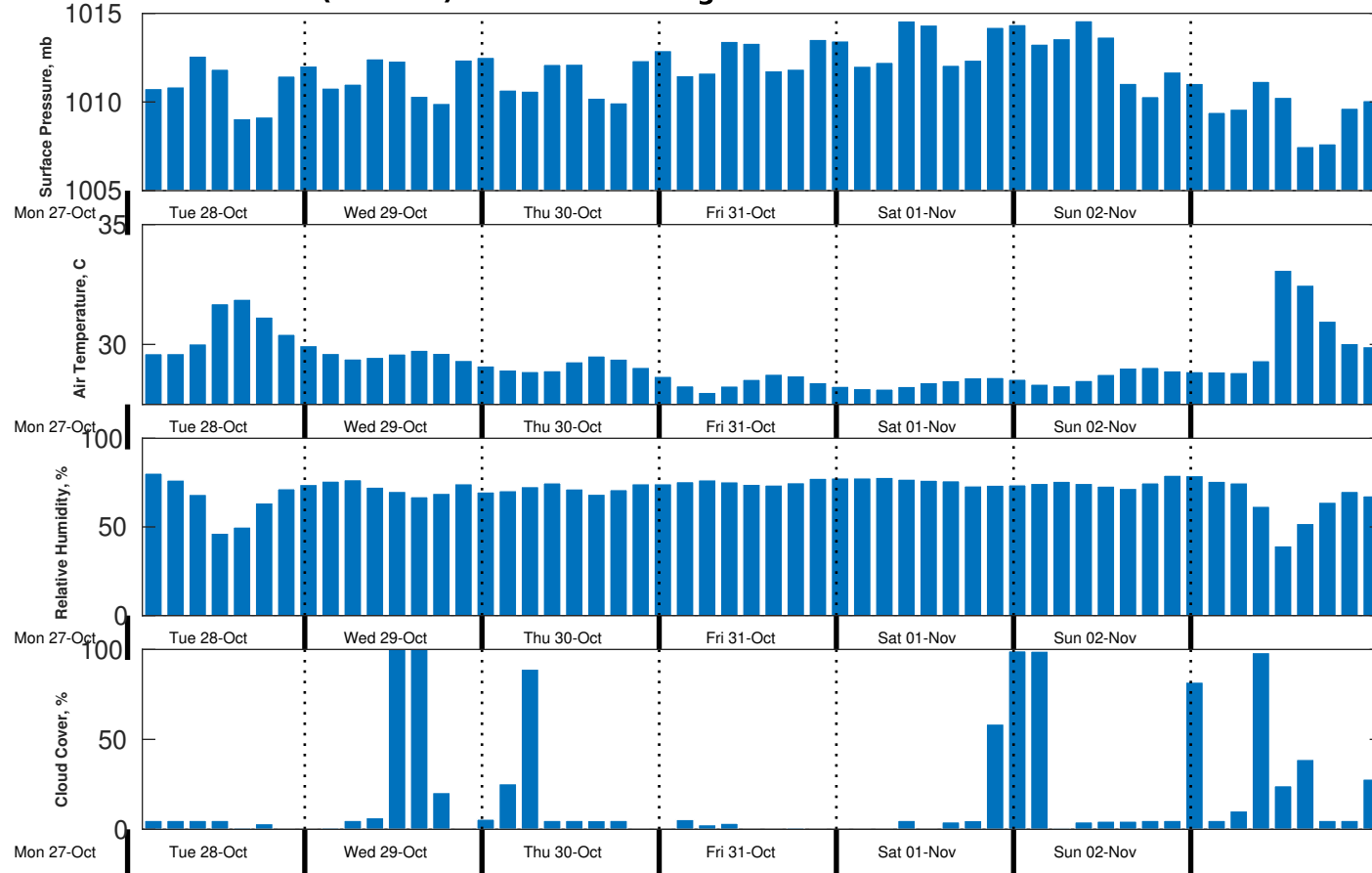
Waves: N, 2-3 feet, 14-15 sec.

No currents available.

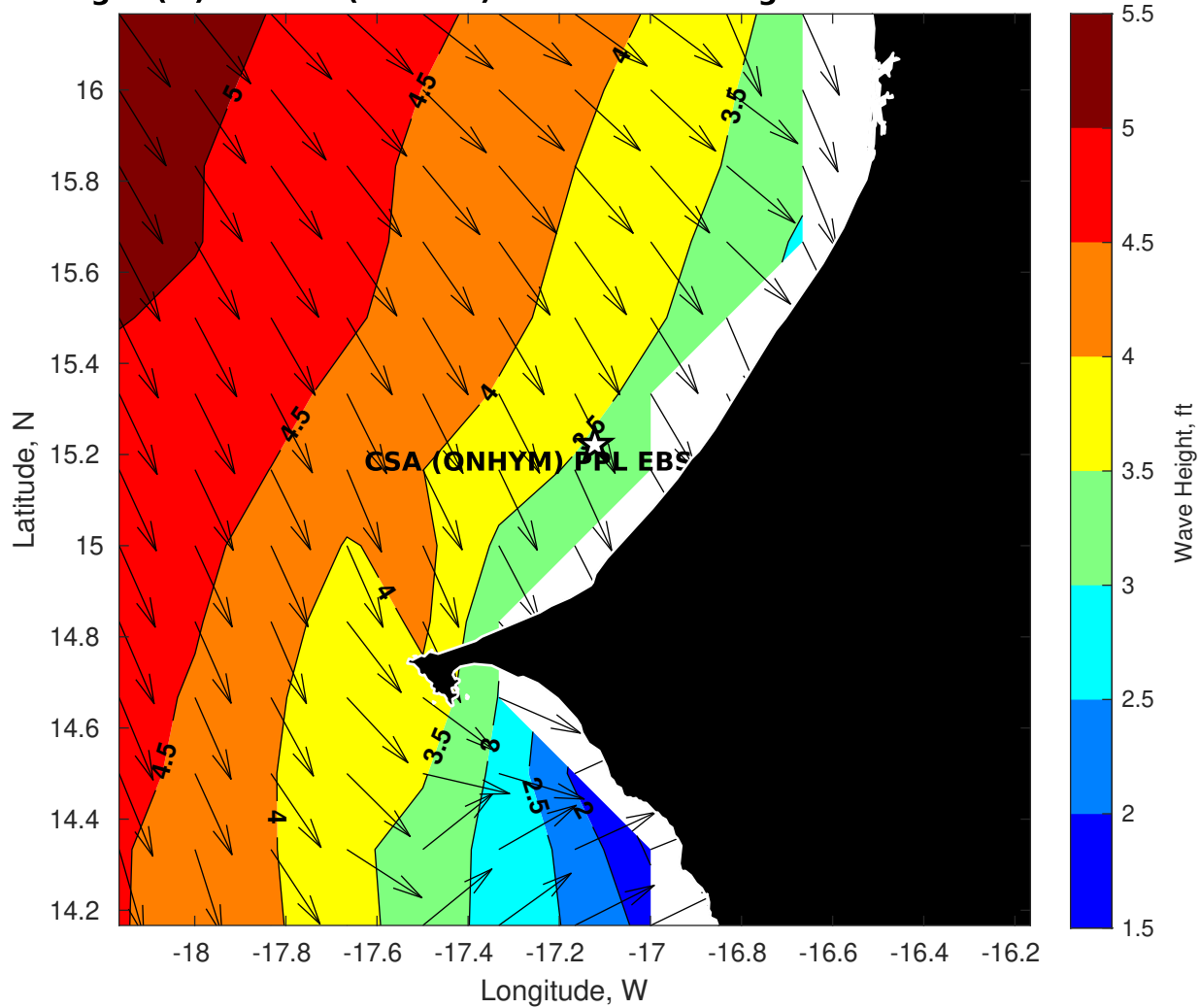
**Wind & Wave Forecast for CSA (ONHYM) PPL EBS - Senegal from 28-Oct-2025 01:00:00 to 13-Nov-2025 01:00:00**



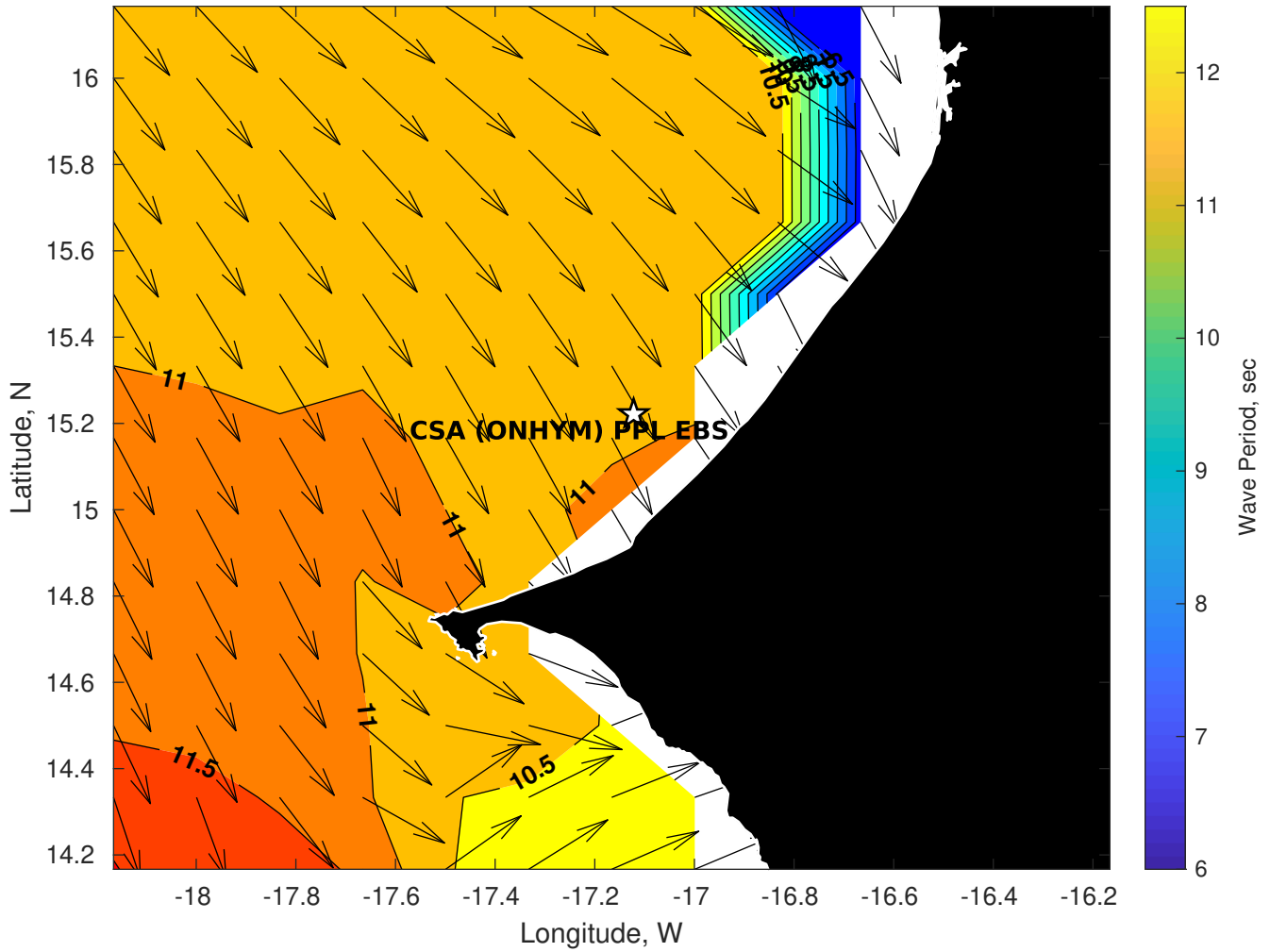
**Met Forecast for CSA (ONHYM) PPL EBS - Senegal from 28-Oct-2025 00:00:00 to 04-Nov-2025 00:00:00**



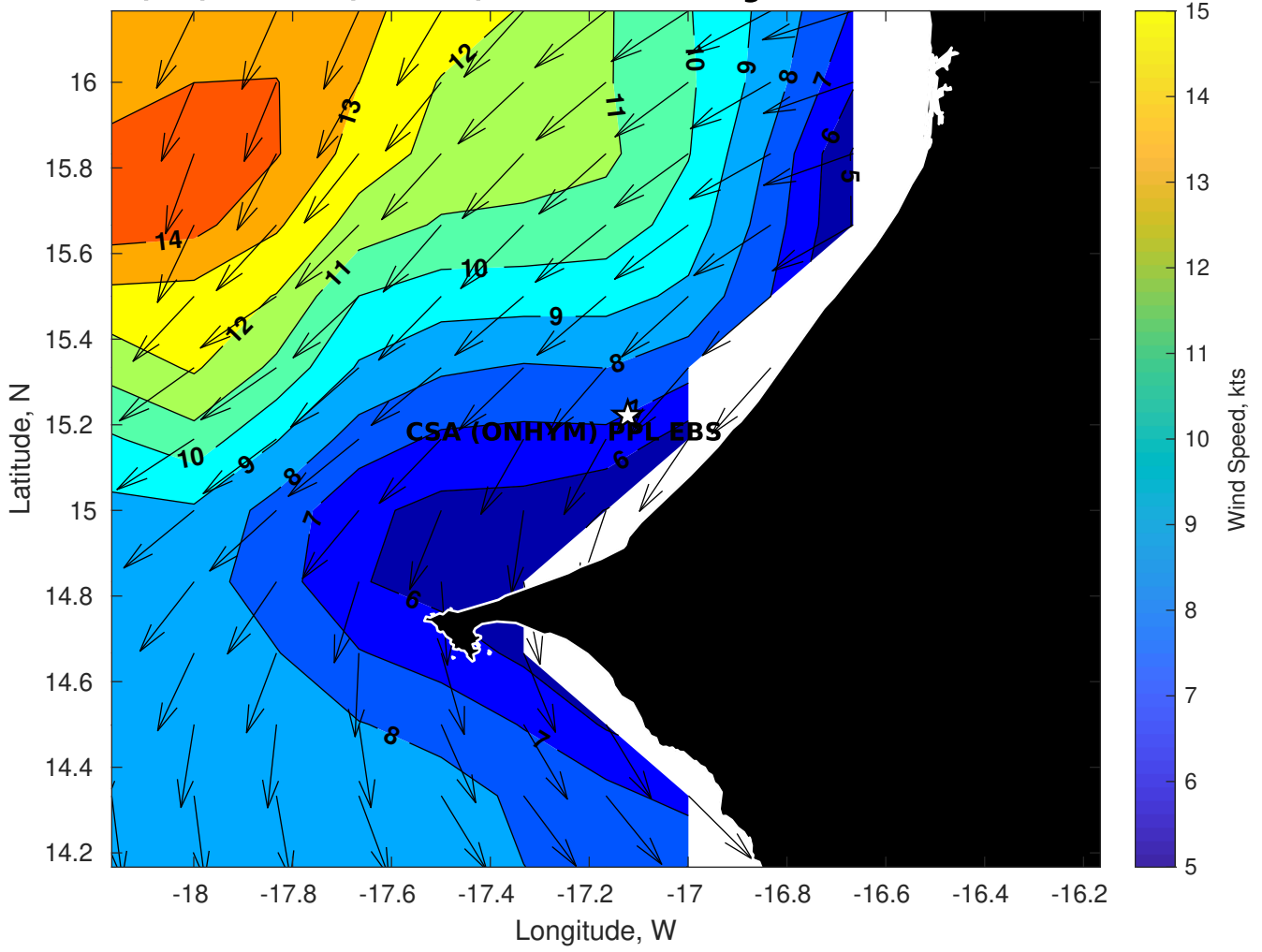
### Wave Height (ft) for CSA (ONHYM) PPL EBS - Senegal at 28-Oct-2025 09:00:00



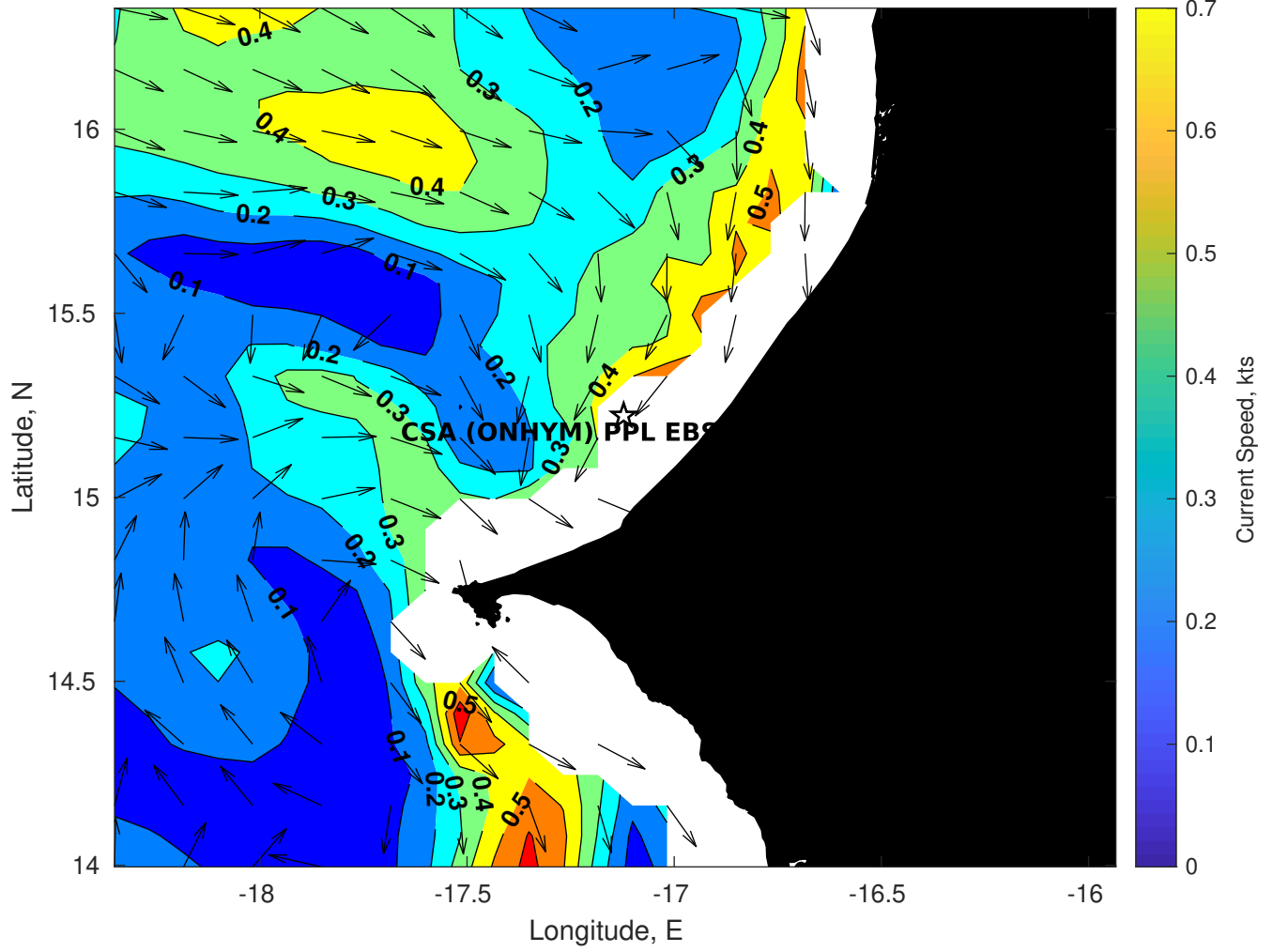
**Wave Period (sec) for CSA (ONHYM) PPL EBS - Senegal at 28-Oct-2025 09:00:00**



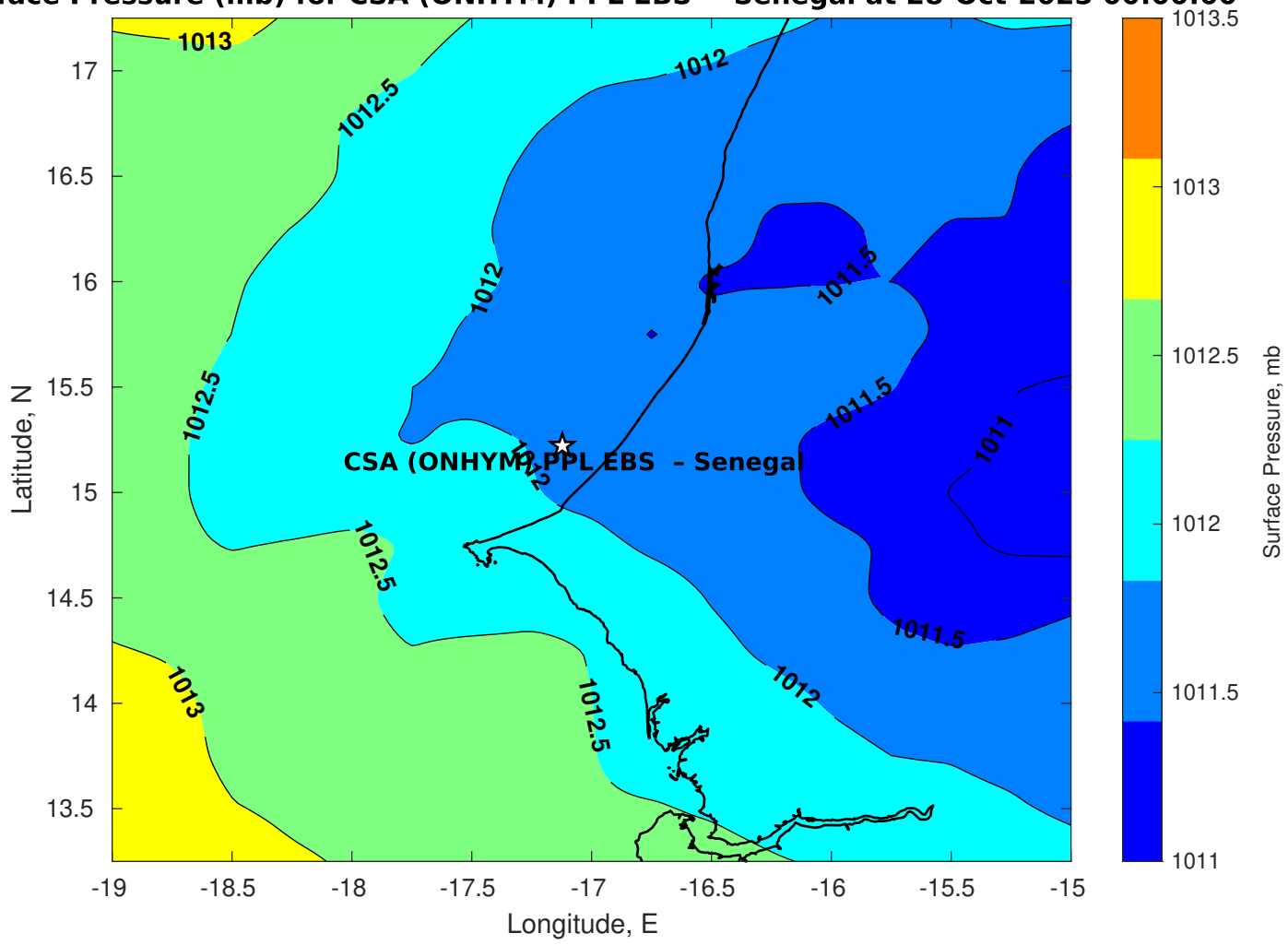
**Winds (kts) for CSA (ONHYM) PPL EBS - Senegal at 28-Oct-2025 09:00:00**



**Surface Currents for CSA (ONHYM) PPL EBS - Senegal at 27-Oct-2025 00:00:00**

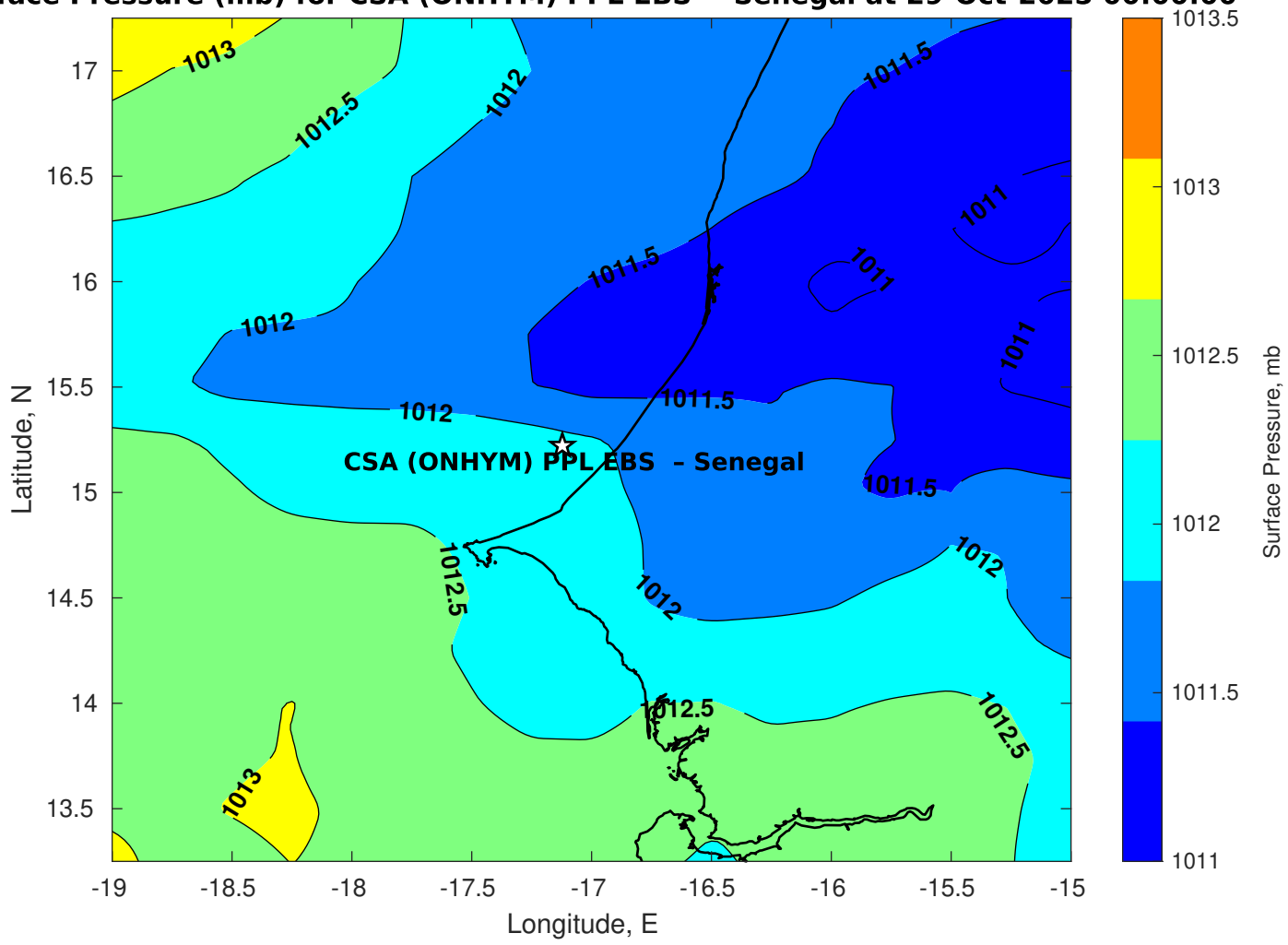


Surface Pressure (mb) for CSA (ONHYM) PPL EBS - Senegal at 28-Oct-2025 00:00:00

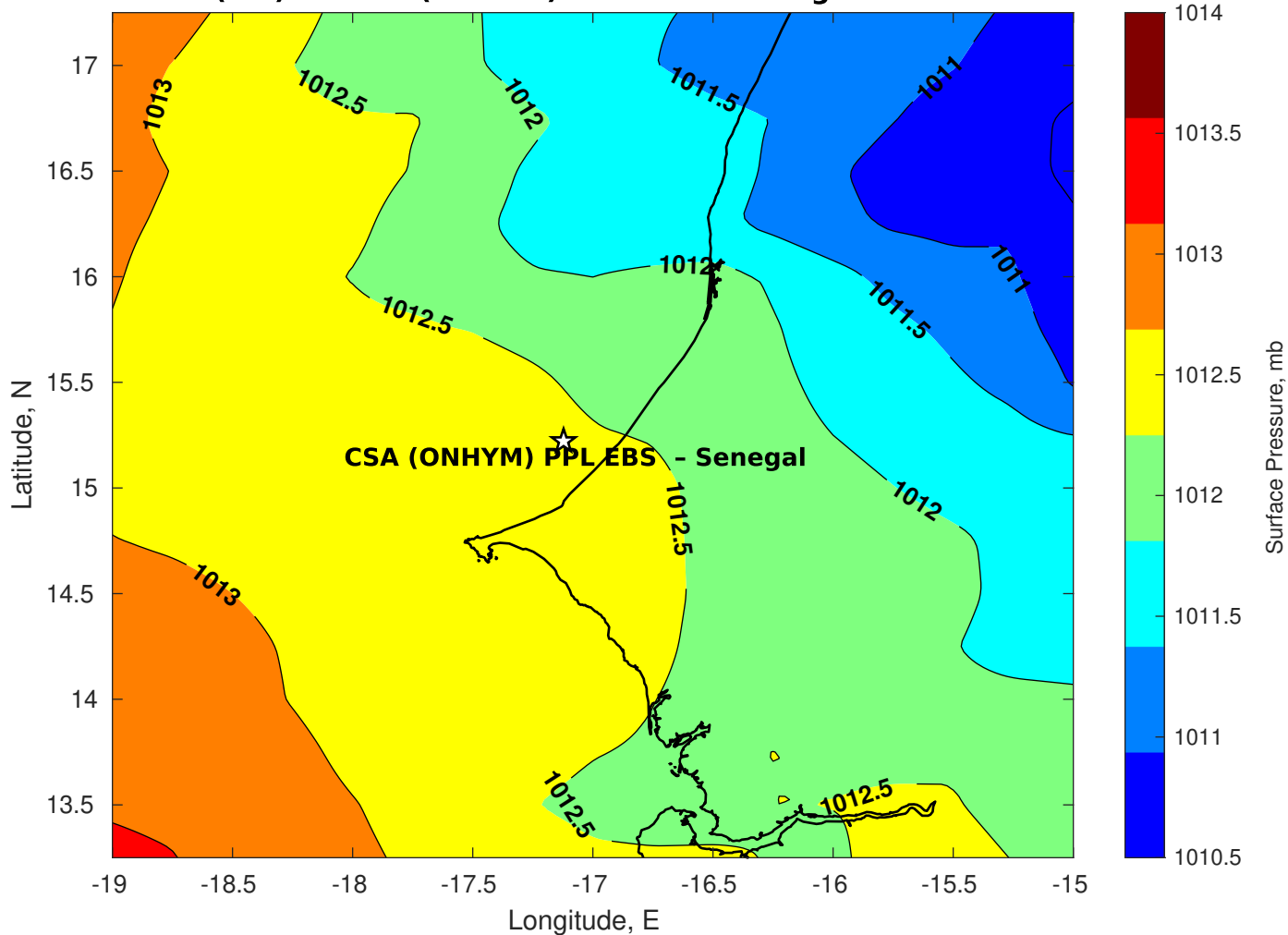




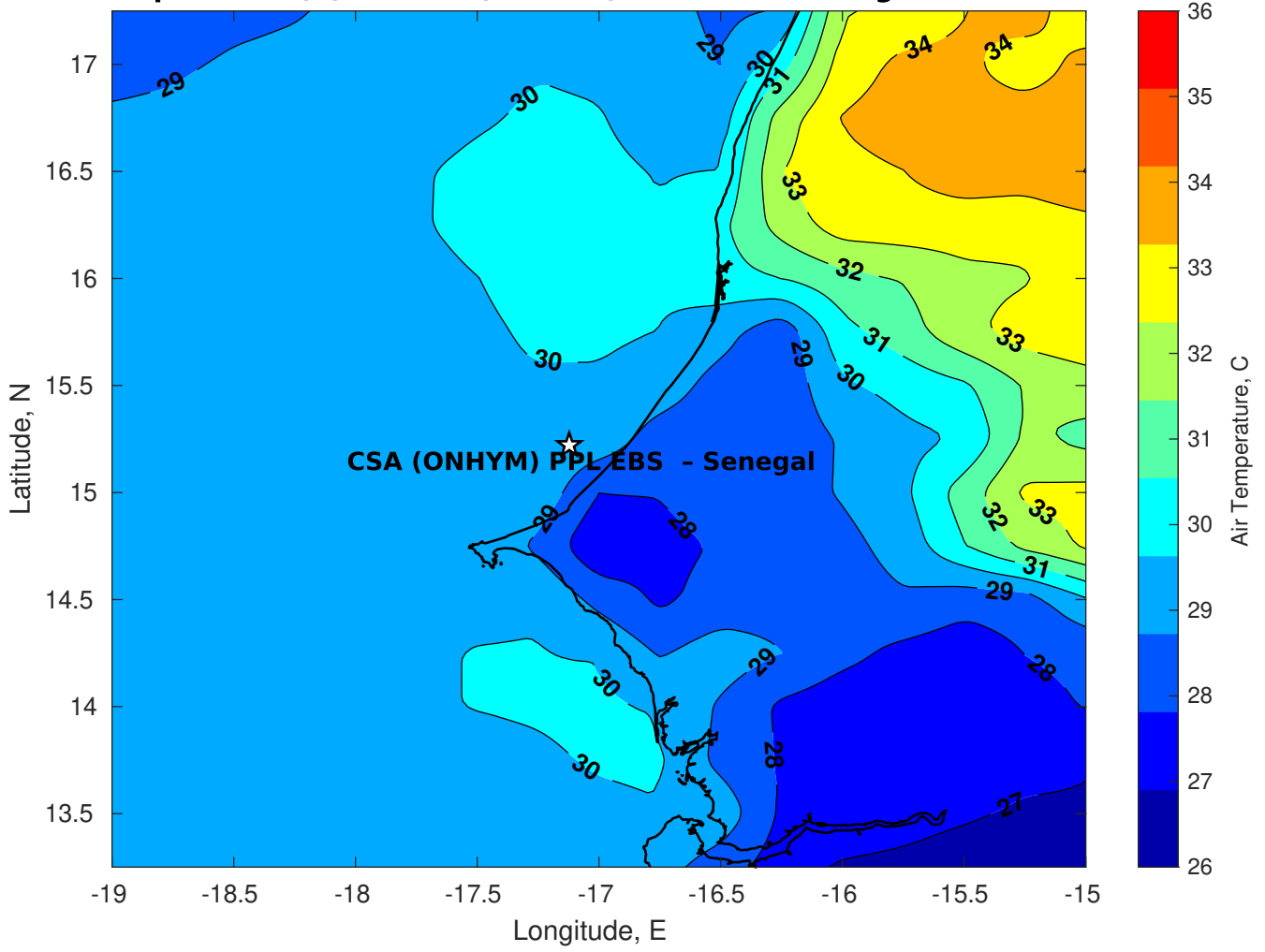
**Surface Pressure (mb) for CSA (ONHYM) PPL EBS - Senegal at 29-Oct-2025 00:00:00**



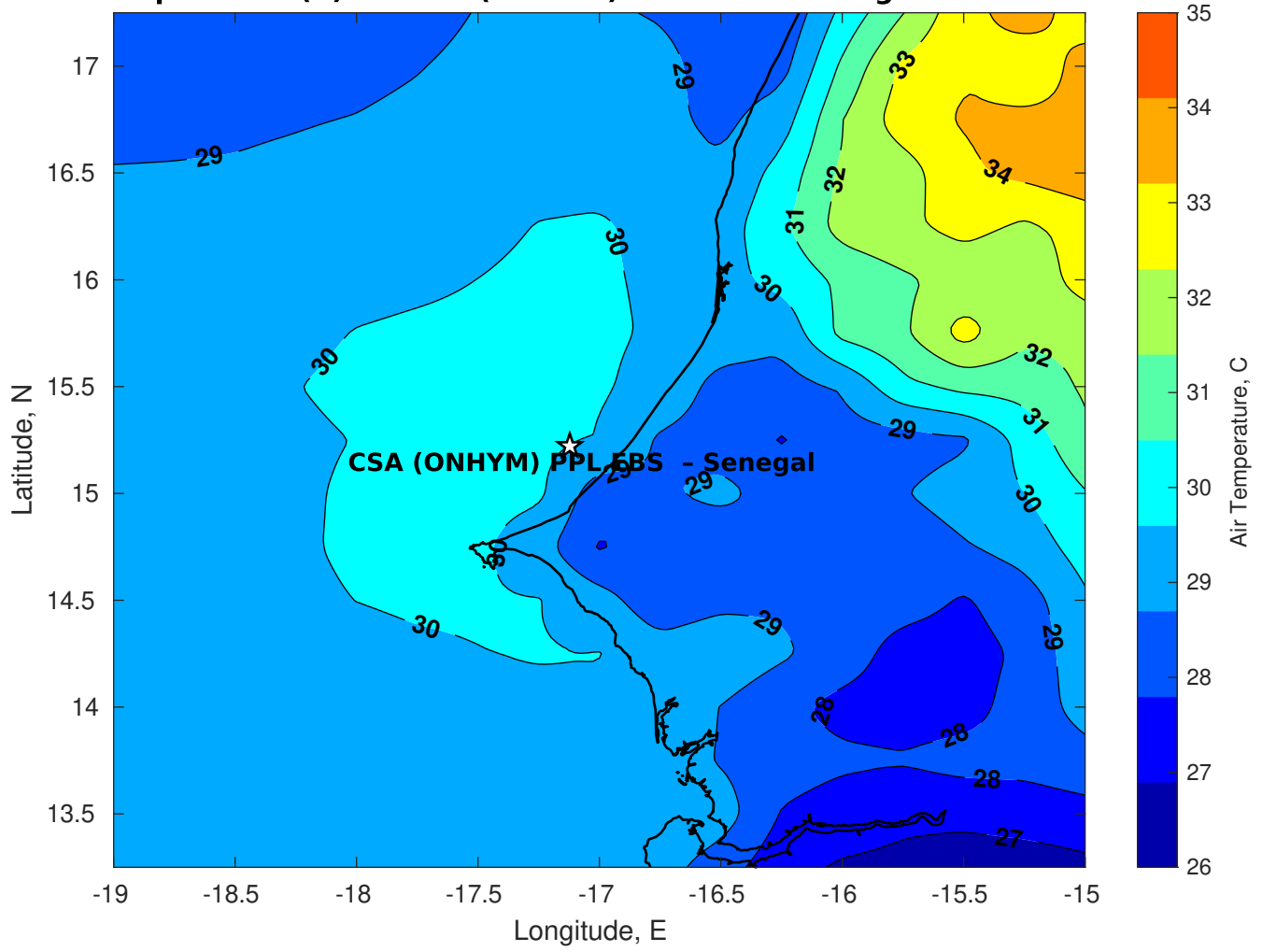
Surface Pressure (mb) for CSA (ONHYM) PPL EBS - Senegal at 30-Oct-2025 00:00:00



**Air Temperature (C) for CSA (ONHYM) PPL EBS - Senegal at 28-Oct-2025**



**Air Temperature (C) for CSA (ONHYM) PPL EBS - Senegal at 28-Oct-2025**



### Air Temperature (C) for CSA (ONHYM) PPL EBS - Senegal at 28-Oct-2025

