
Marine Weather Forecast for CSA (ONHYM) PPL EBS - Senegal

Forecast valid as of 30-Oct-2025 0800 GMT

All times are local.

Today

Winds: NW, 10-15 kts.

Waves: N, 4-5 feet, 7-8 sec.

No currents available.

Tonight

Winds: NW, 5-10 kts.

Waves: N, 4-5 feet, 7-8 sec.

No currents available.

Friday

Winds: NW, 10-15 kts.

Waves: N, 4-5 feet, 10-11 sec.

No currents available.

Friday Night

Winds: NW, 10-15 kts.

Waves: N, 4-5 feet, 9-10 sec.

No currents available.

Saturday

Winds: NW, 10-15 kts.

Waves: N, 3-4 feet, 9-10 sec.

No currents available.

Saturday Night

Winds: NW, 10-15 kts.

Waves: N, 3-4 feet, 14-15 sec.

No currents available.

Sunday

Winds: N, 10-15 kts.

Waves: NW, 3-4 feet, 14-15 sec.

No currents available.

Sunday Night

Winds: NW, 10-15 kts.

Waves: NW, 3-4 feet, 11-12 sec.

No currents available.

Monday

Winds: N, 10-15 kts.

Waves: N, 3-4 feet, 11-12 sec.

No currents available.

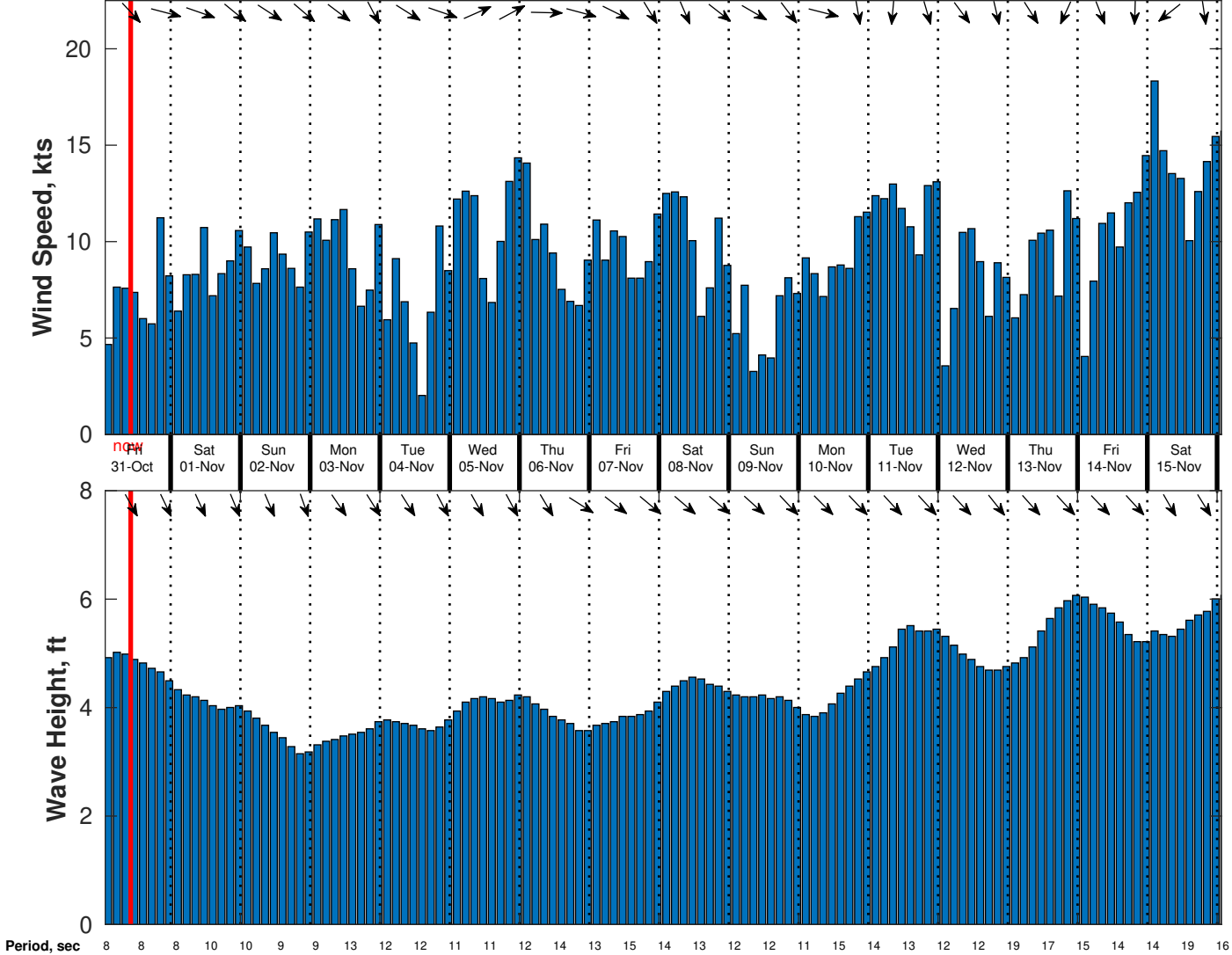
Monday Night

Winds: NW, 10-15 kts.

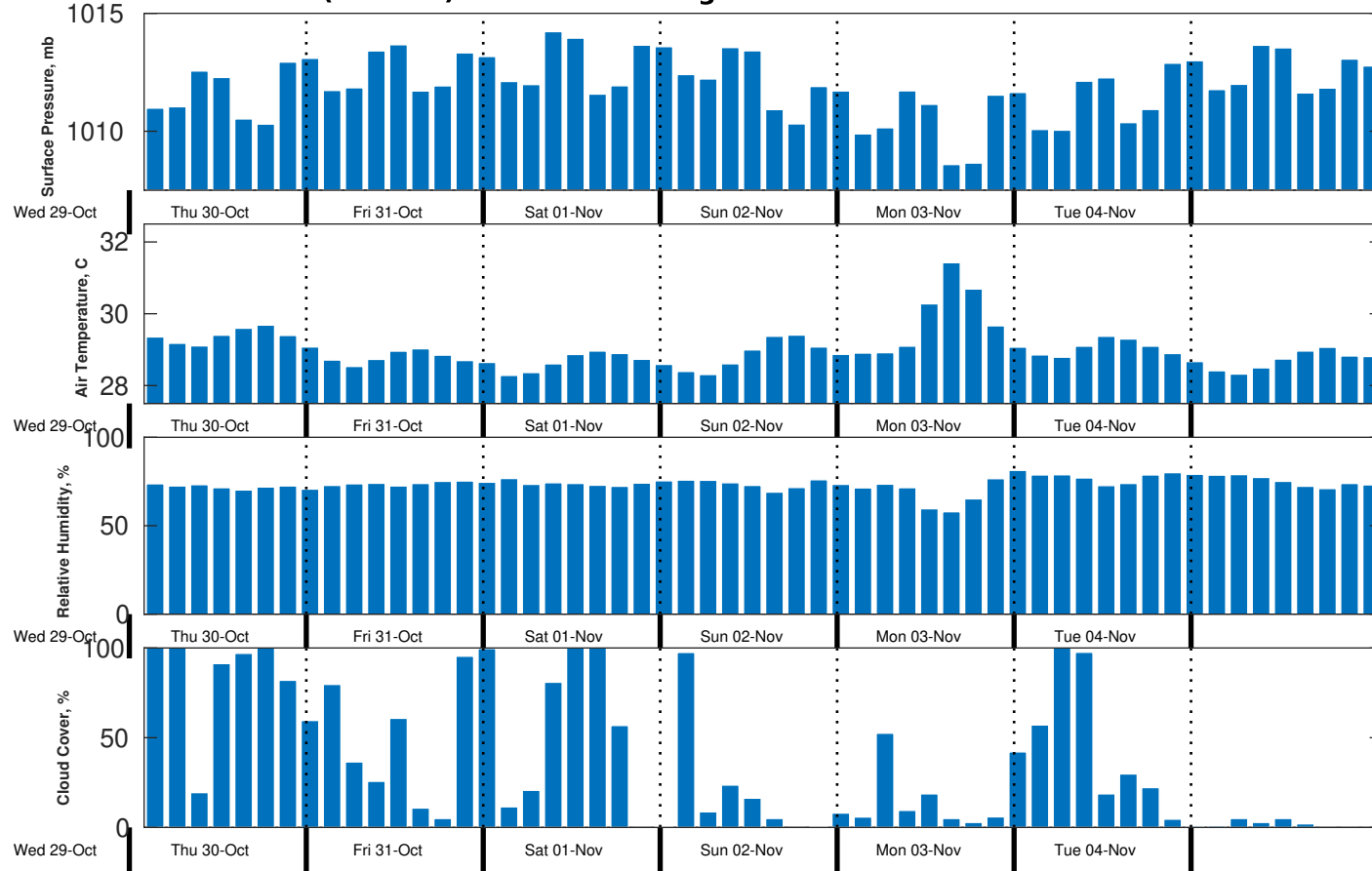
Waves: NW, 4-5 feet, 11-12 sec.

No currents available.

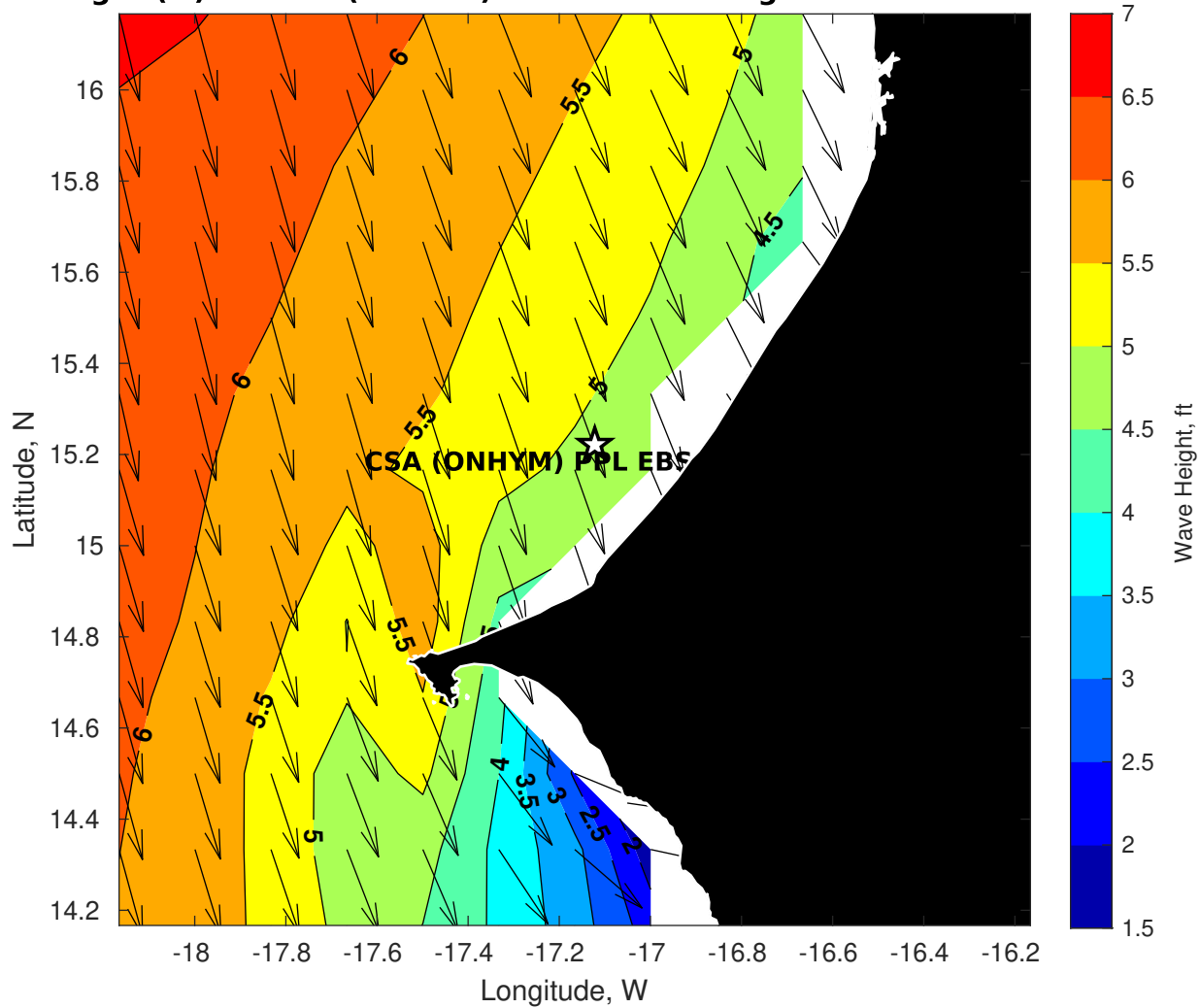
Wind & Wave Forecast for CSA (ONHYM) PPL EBS - Senegal from 30-Oct-2025 01:00:00 to 15-Nov-2025 01:00:00



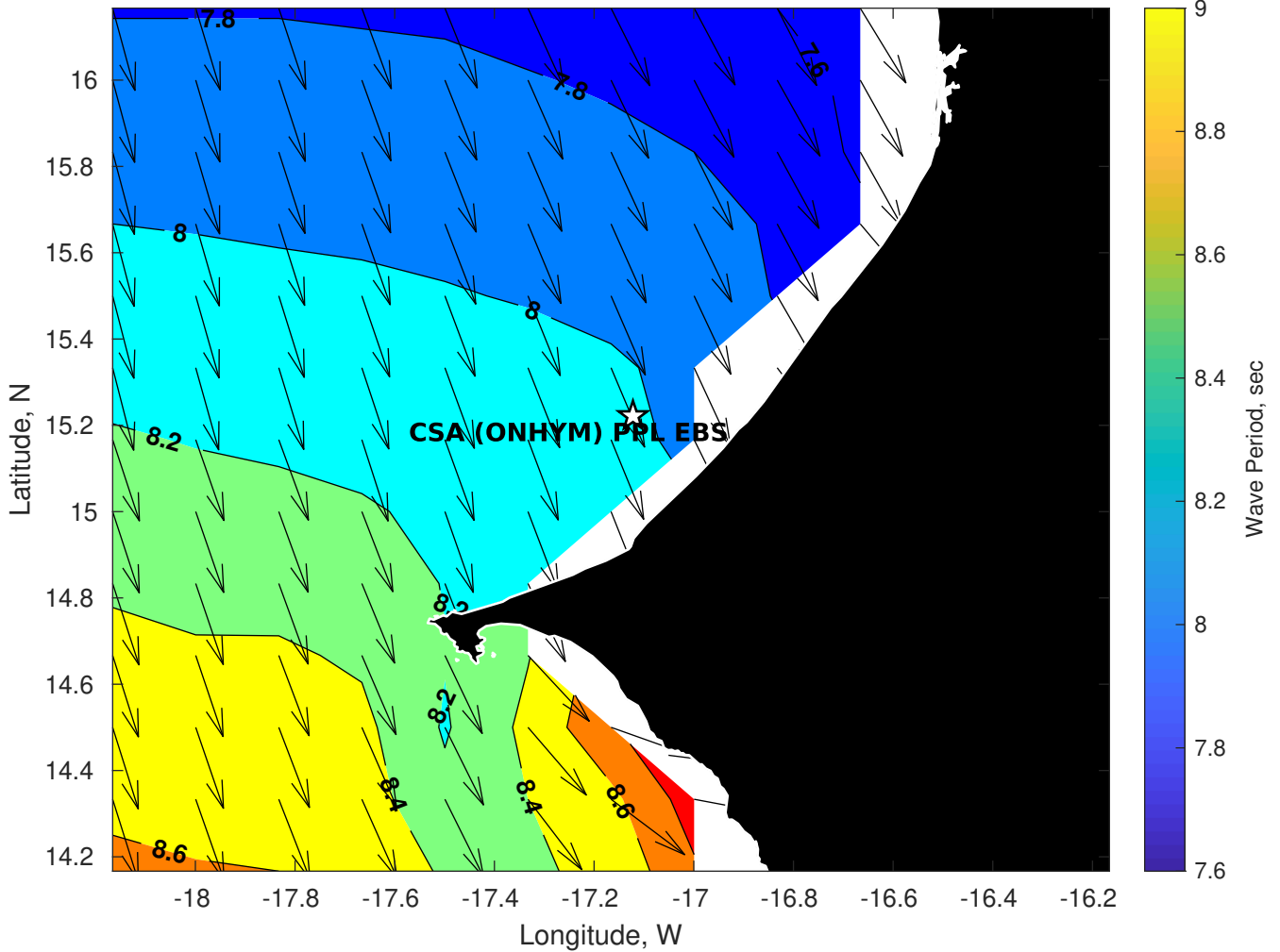
Met Forecast for CSA (ONHYM) PPL EBS - Senegal from 30-Oct-2025 00:00:00 to 06-Nov-2025 00:00:00



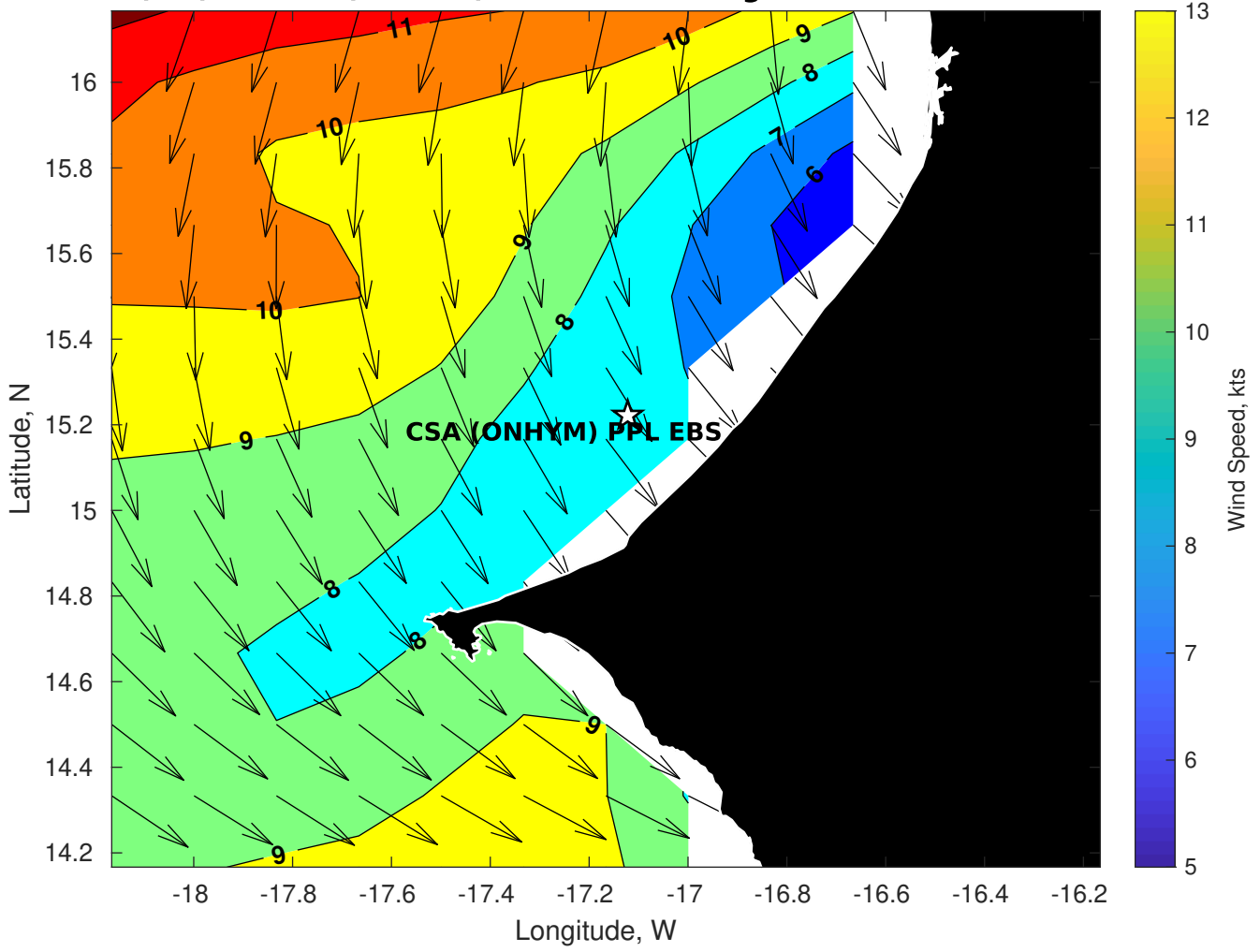
Wave Height (ft) for CSA (ONHYM) PPL EBS - Senegal at 30-Oct-2025 09:00:00



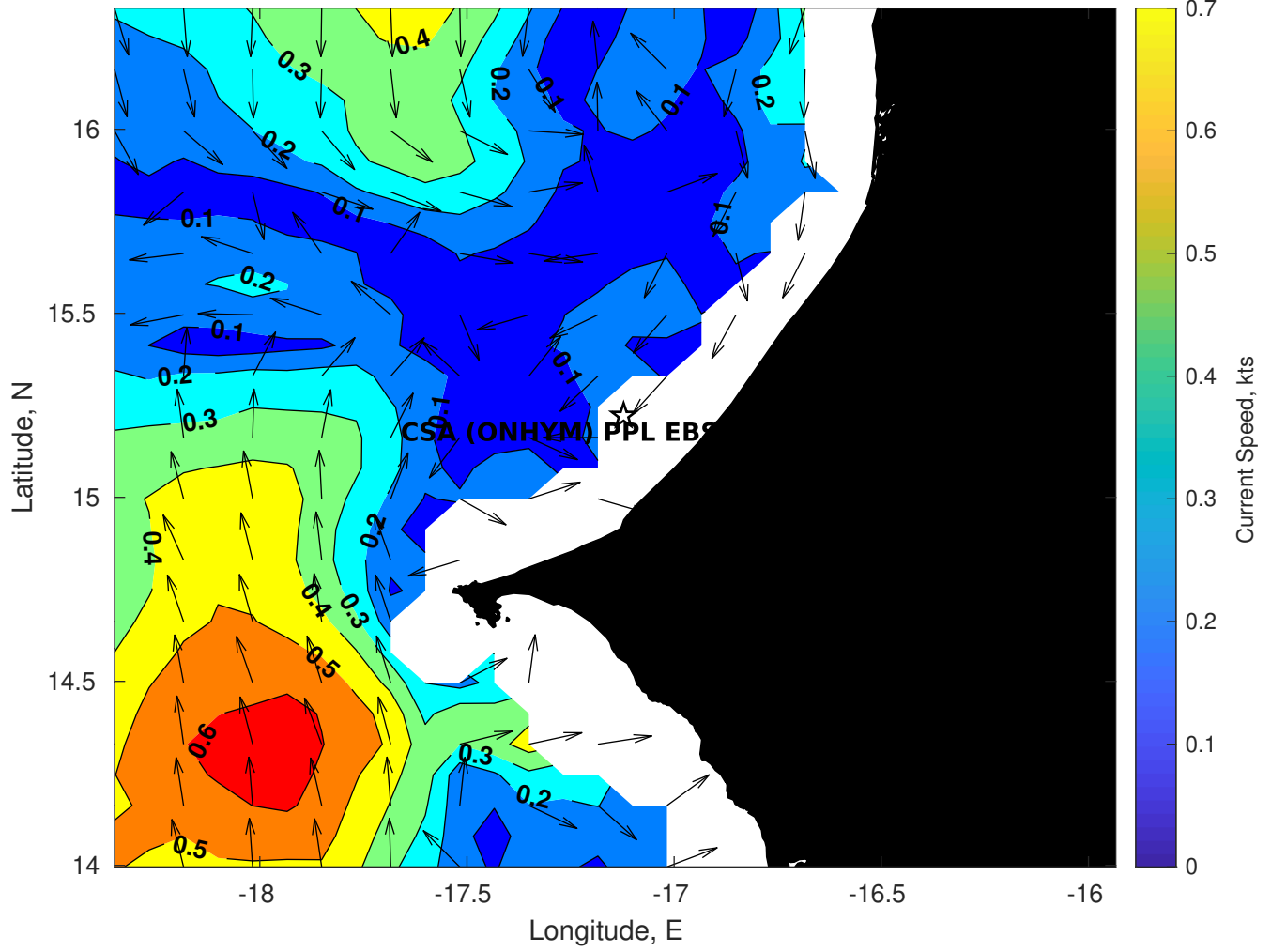
Wave Period (sec) for CSA (ONHYM) PPL EBS - Senegal at 30-Oct-2025 09:00:00



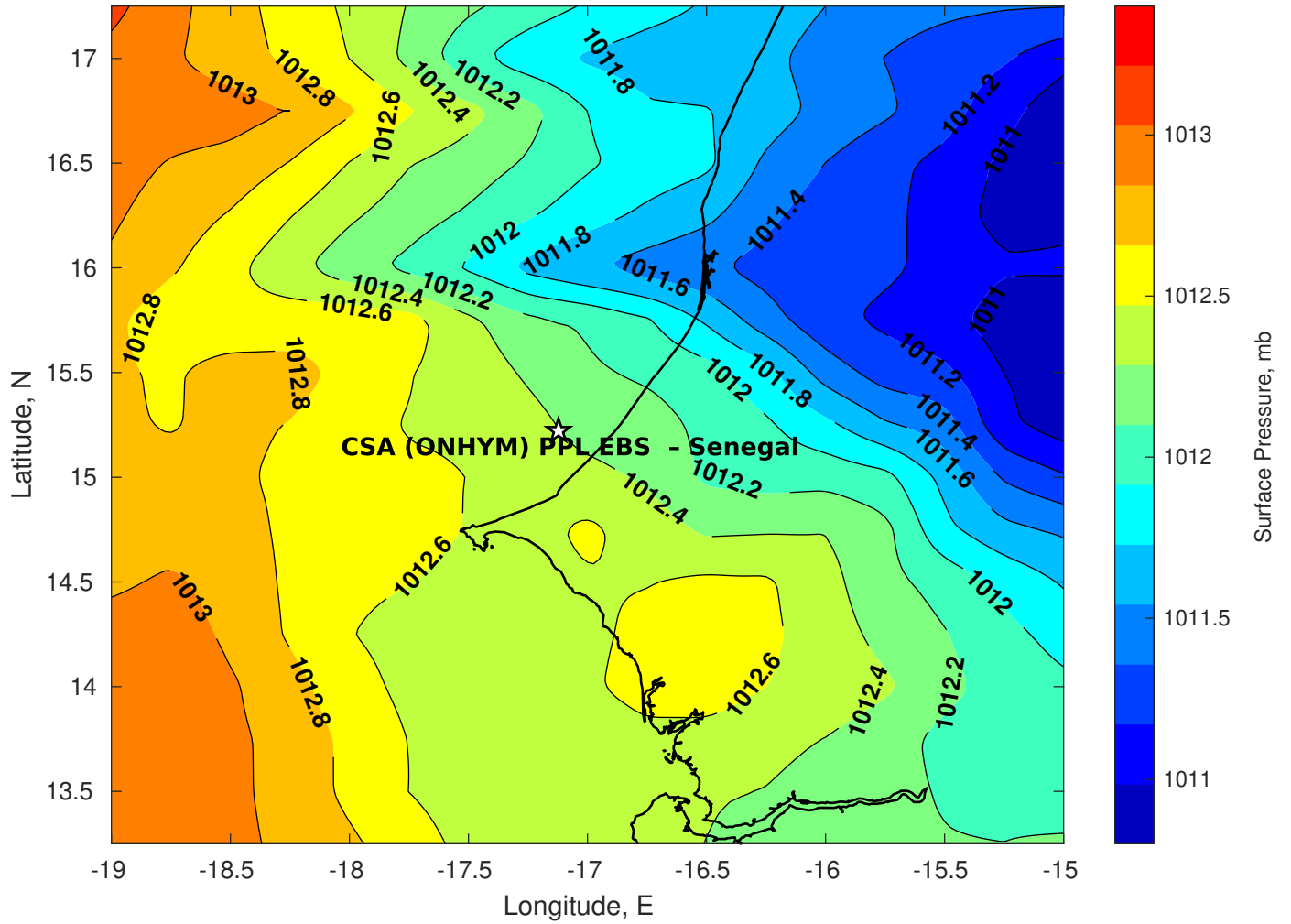
Winds (kts) for CSA (ONHYM) PPL EBS - Senegal at 30-Oct-2025 09:00:00



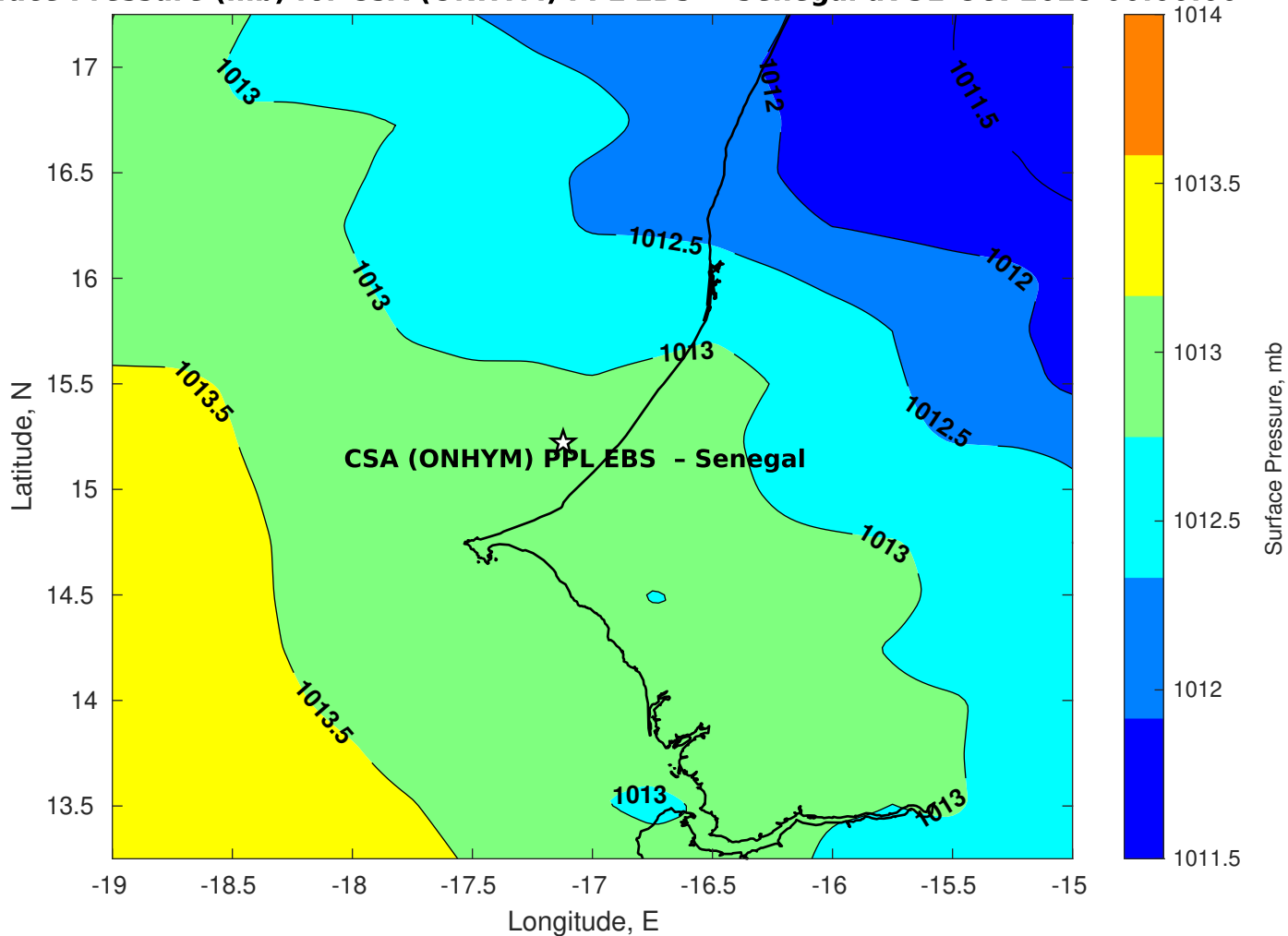
Surface Currents for CSA (ONHYM) PPL EBS - Senegal at 29-Oct-2025 00:00:00



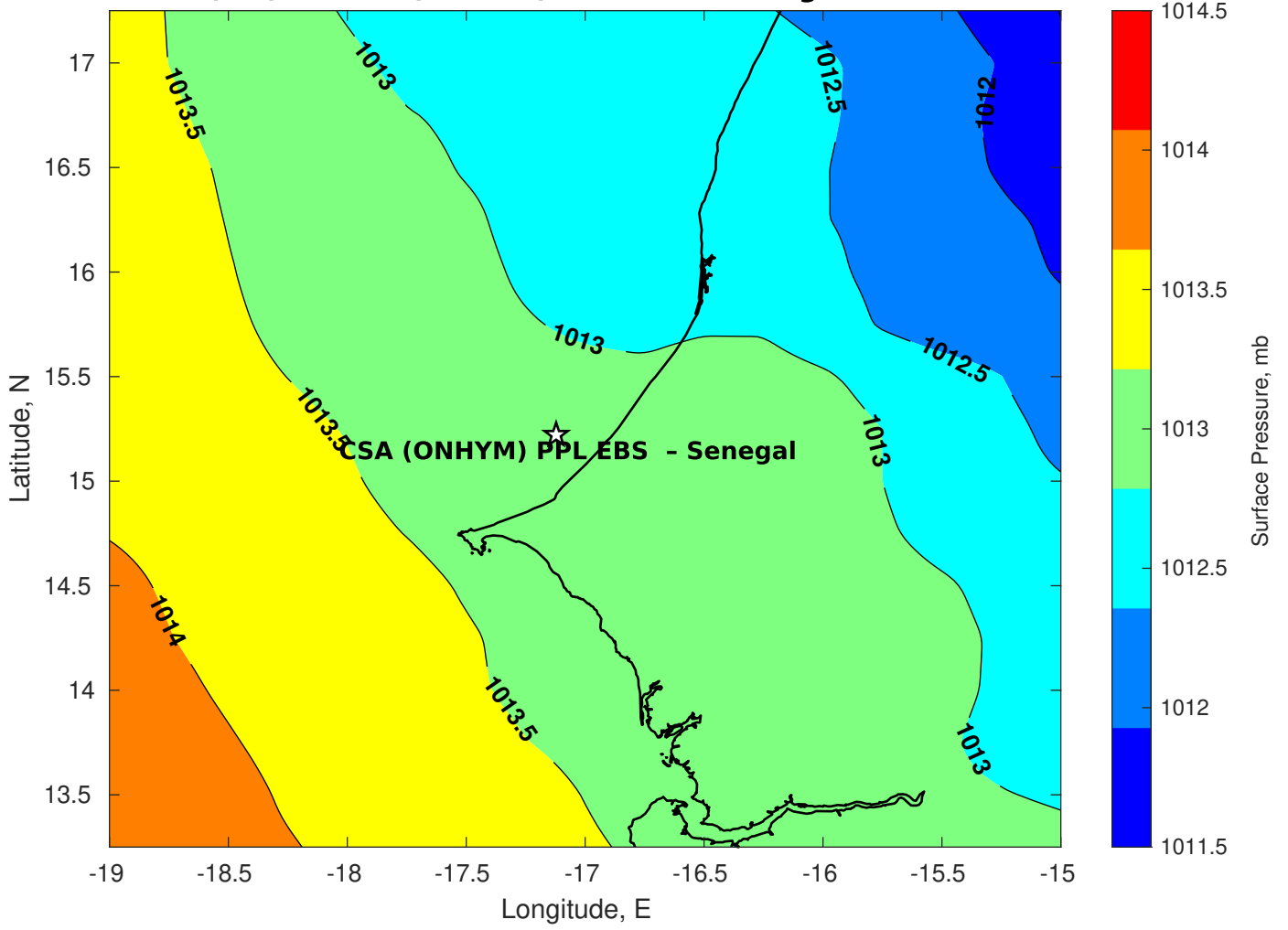
Surface Pressure (mb) for CSA (ONHYM) PPL EBS - Senegal at 30-Oct-2025 00:00:00



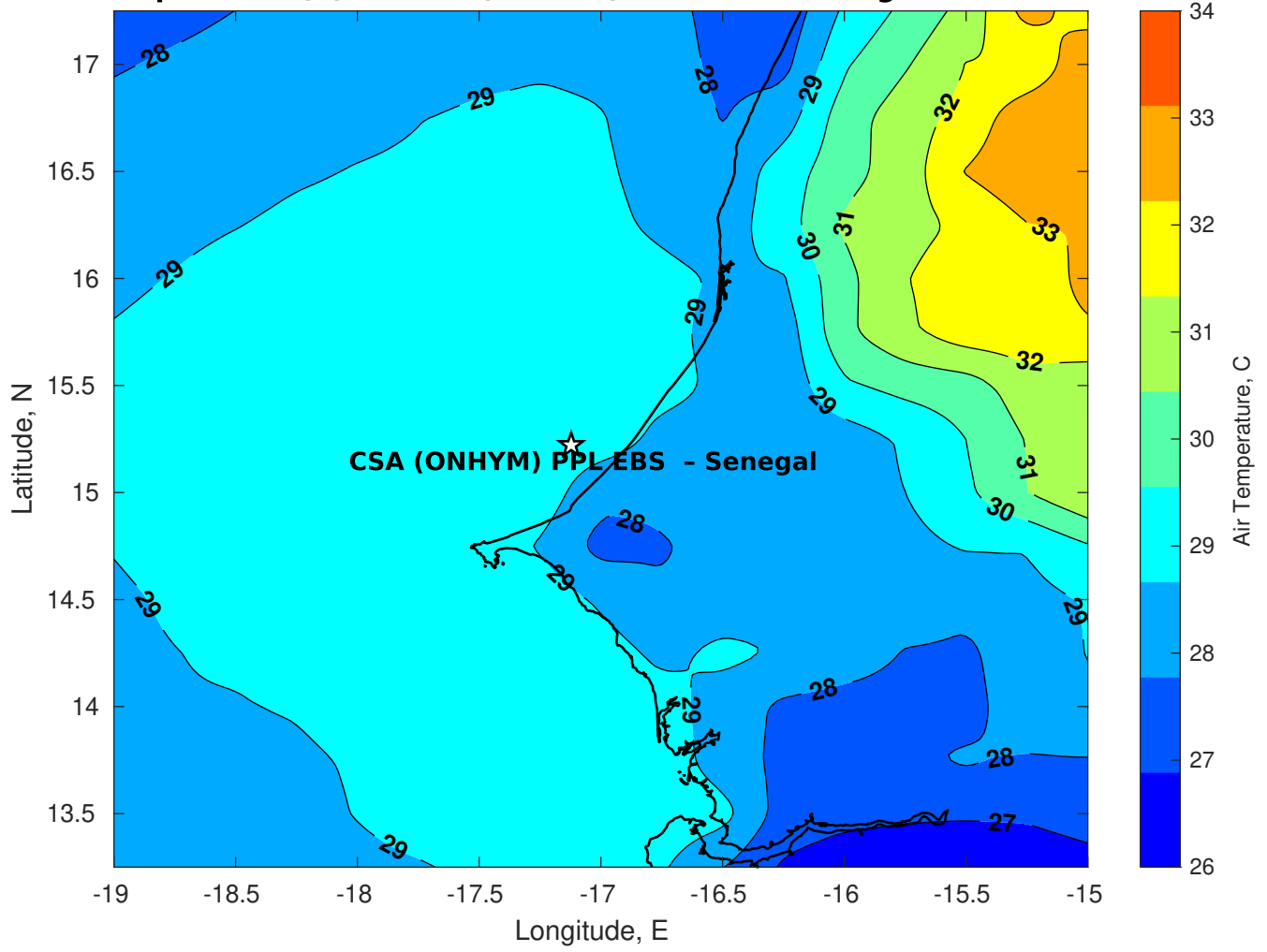
Surface Pressure (mb) for CSA (ONHYM) PPL EBS - Senegal at 31-Oct-2025 00:00:00



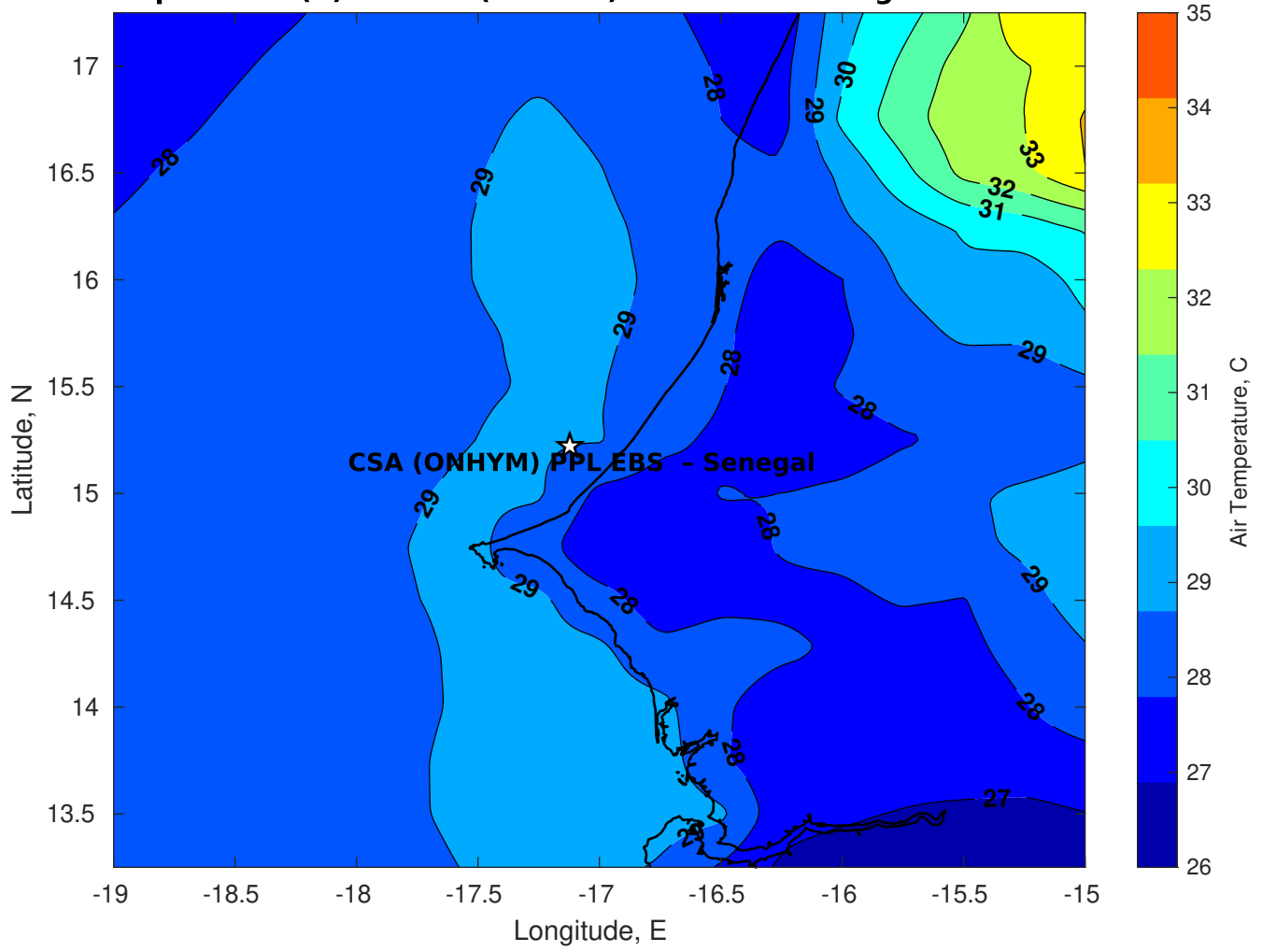
Surface Pressure (mb) for CSA (ONHYM) PPL EBS - Senegal at 01-Nov-2025 00:00:00



Air Temperature (C) for CSA (ONHYM) PPL EBS - Senegal at 30-Oct-2025



Air Temperature (C) for CSA (ONHYM) PPL EBS - Senegal at 30-Oct-2025



Air Temperature (C) for CSA (ONHYM) PPL EBS - Senegal at 30-Oct-2025

