
Marine Weather Forecast for CSA (ONHYM) PPL EBS - Senegal

Forecast valid as of 19-Nov-2025 0900 GMT

All times are local.

Today

Winds: NE, 15-20 kts.

Waves: NW, 4-5 feet, 11-12 sec.

No currents available.

Tonight

Winds: N, 15-20 kts.

Waves: NW, 5-6 feet, 11-12 sec.

No currents available.

Thursday

Winds: NE, 15-20 kts.

Waves: NW, 5-6 feet, 11-12 sec.

No currents available.

Thursday Night

Winds: N, 15-20 kts.

Waves: NW, 4-5 feet, 11-12 sec.

No currents available.

Friday

Winds: NE, 15-20 kts.

Waves: NW, 3-4 feet, 11-12 sec.

No currents available.

Friday Night

Winds: N, 15-20 kts.

Waves: NW, 3-4 feet, 15-16 sec.

No currents available.

Saturday

Winds: NE, 15-20 kts.

Waves: NW, 5-6 feet, 14-15 sec.

No currents available.

Saturday Night

Winds: N, 10-15 kts.

Waves: NW, 4-5 feet, 13-14 sec.

No currents available.

Sunday

Winds: NE, 20-25 kts.

Waves: NW, 6-7 feet, 12-13 sec.

No currents available.

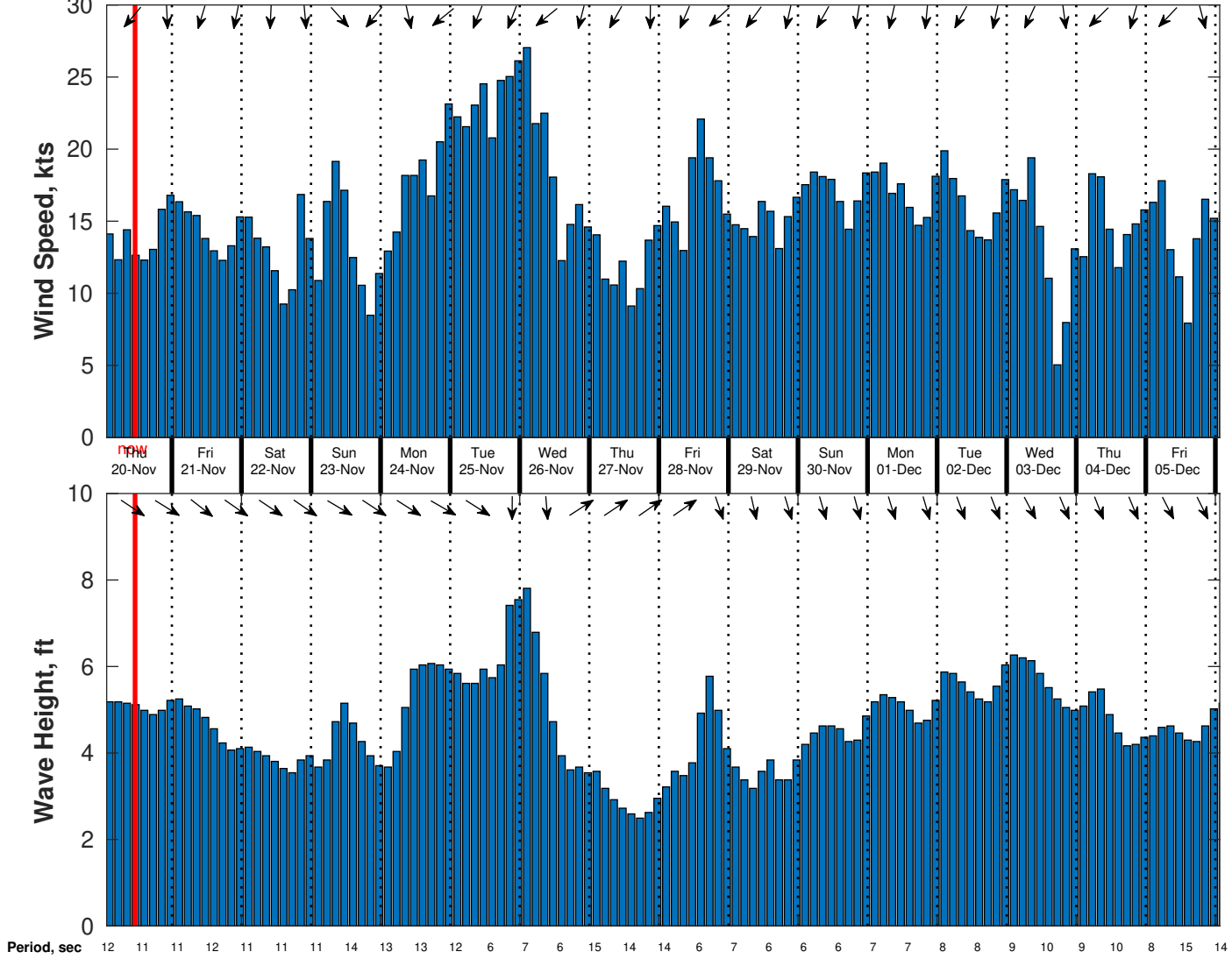
Sunday Night

Winds: NE, 20-25 kts.

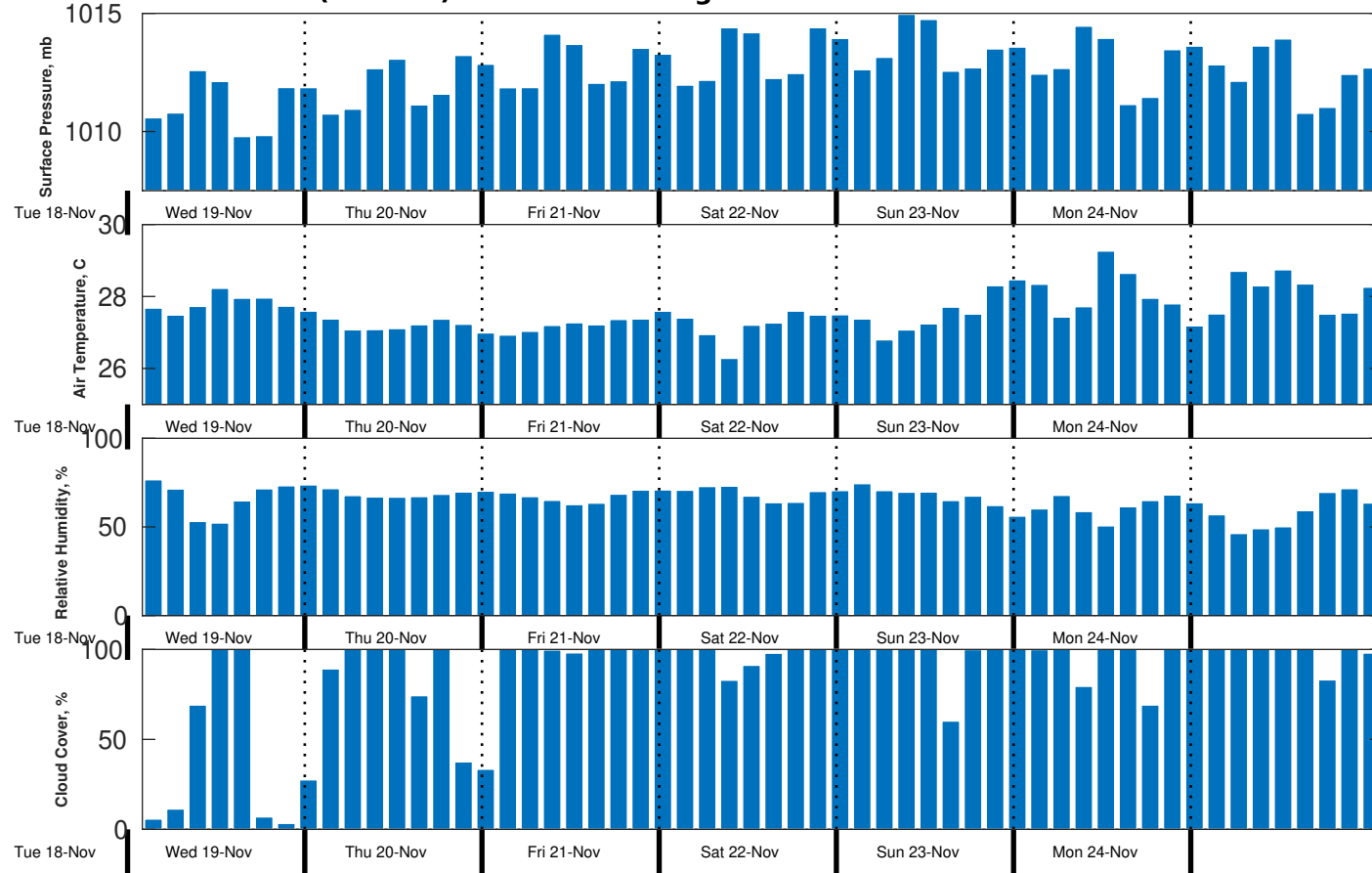
Waves: NW, 5-6 feet, 12-13 sec.

No currents available.

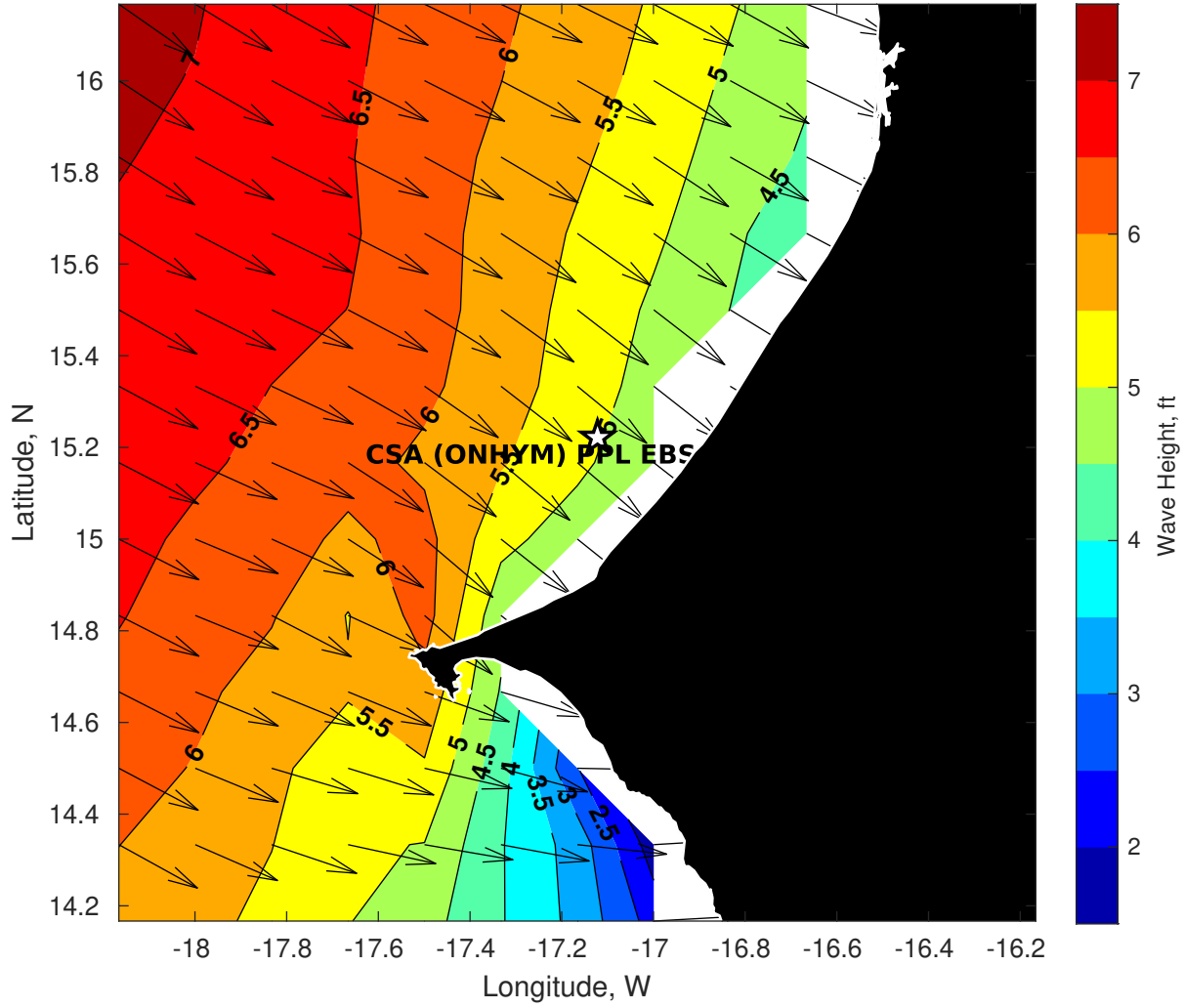
Wind & Wave Forecast for CSA (ONHYM) PPL EBS - Senegal from 19-Nov-2025 01:00:00 to 05-Dec-2025 01:00:00



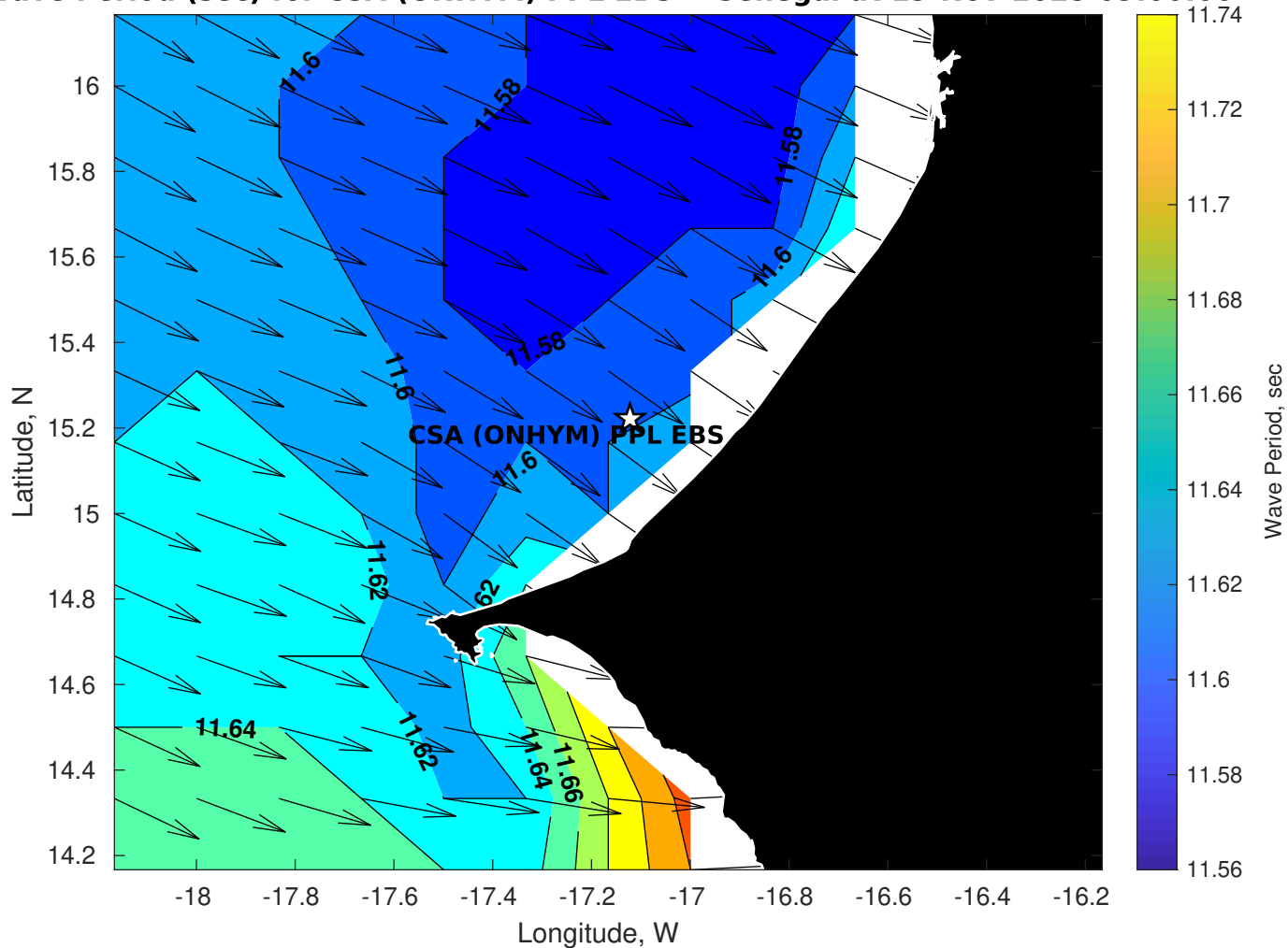
Met Forecast for CSA (ONHYM) PPL EBS - Senegal from 19-Nov-2025 00:00:00 to 26-Nov-2025 00:00:00



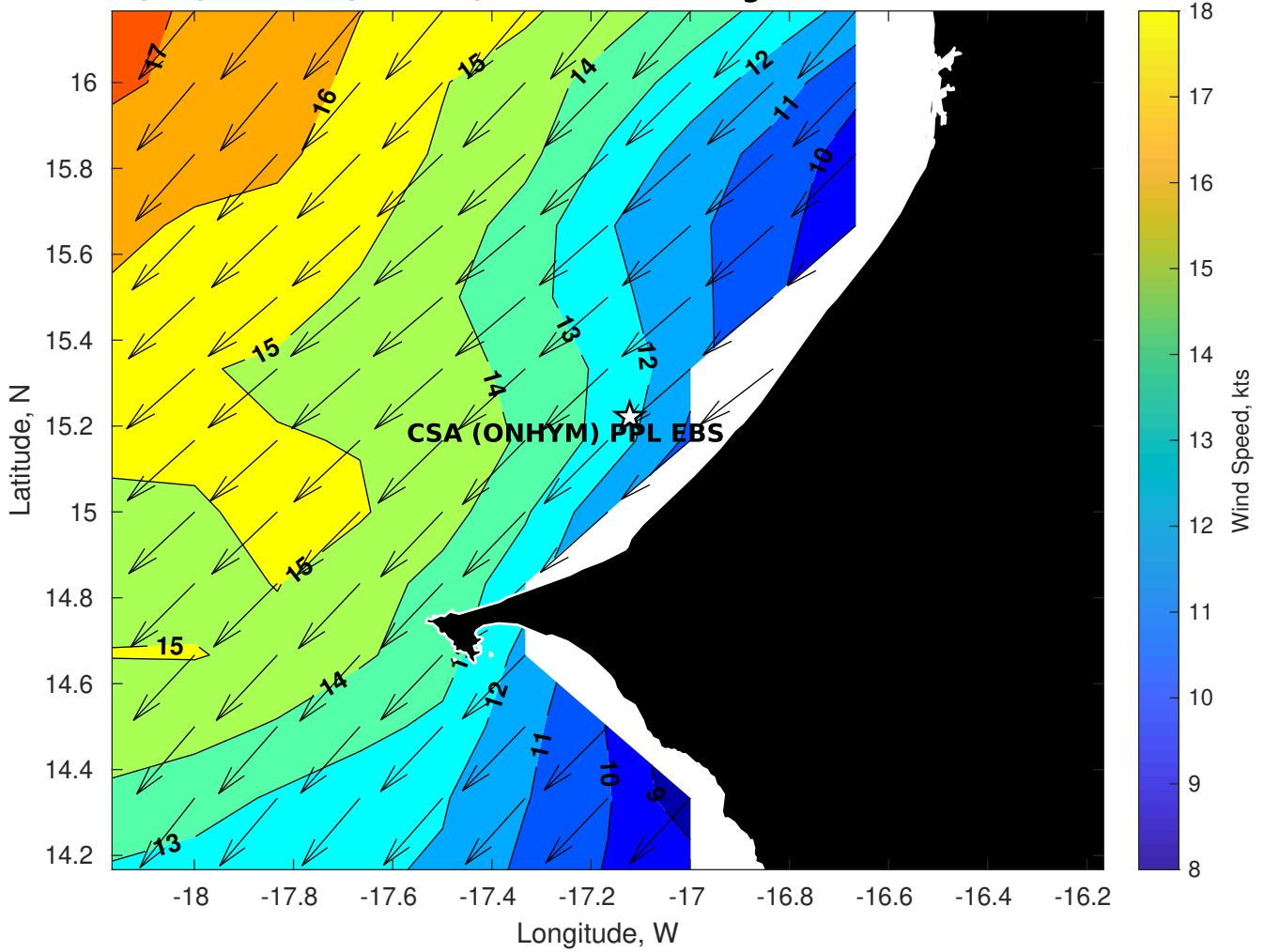
Wave Height (ft) for CSA (ONHYM) PPL EBS - Senegal at 19-Nov-2025 09:00:00



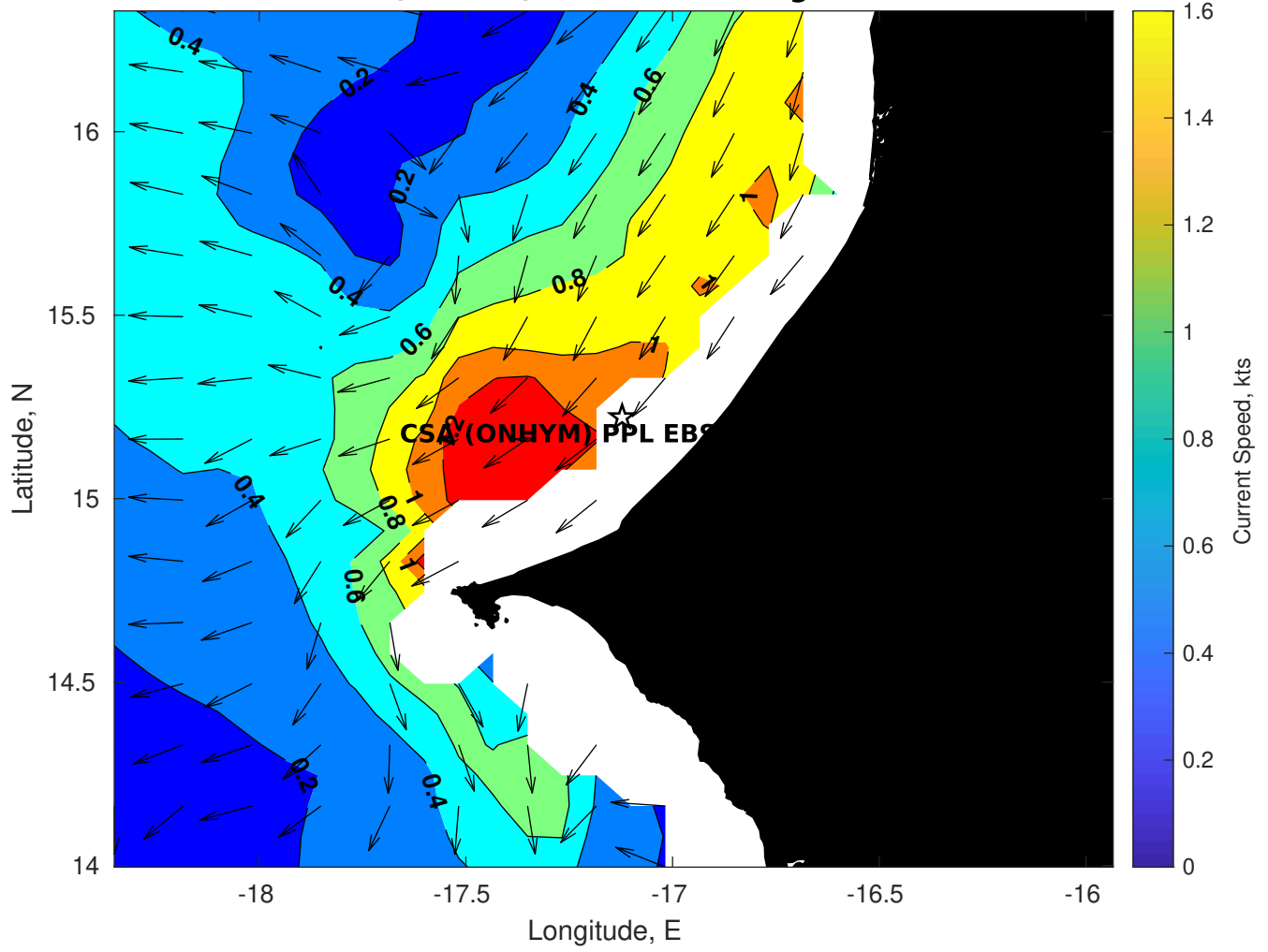
Wave Period (sec) for CSA (ONHYM) PPL EBS - Senegal at 19-Nov-2025 09:00:00



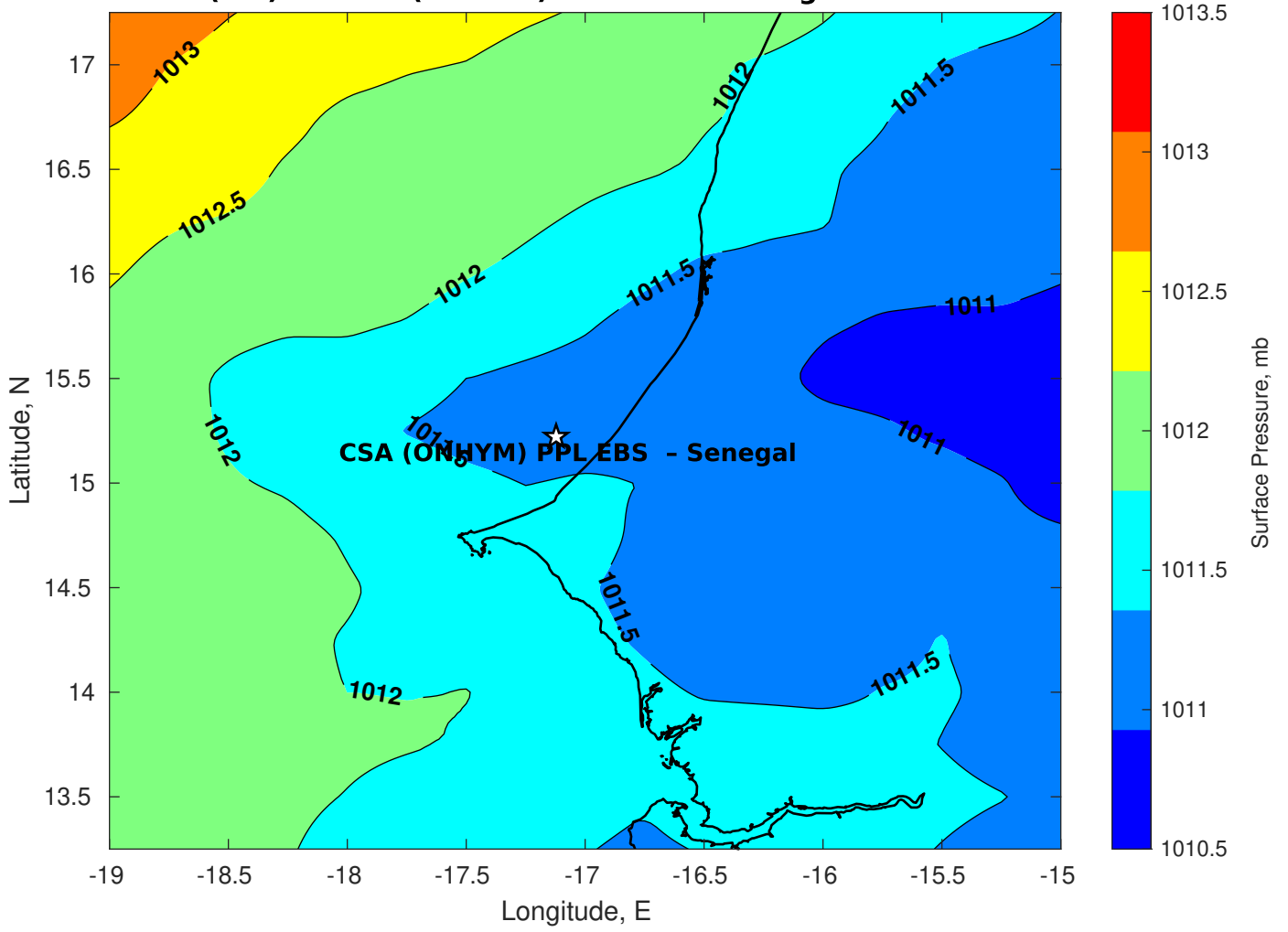
Winds (kts) for CSA (ONHYM) PPL EBS - Senegal at 19-Nov-2025 09:00:00



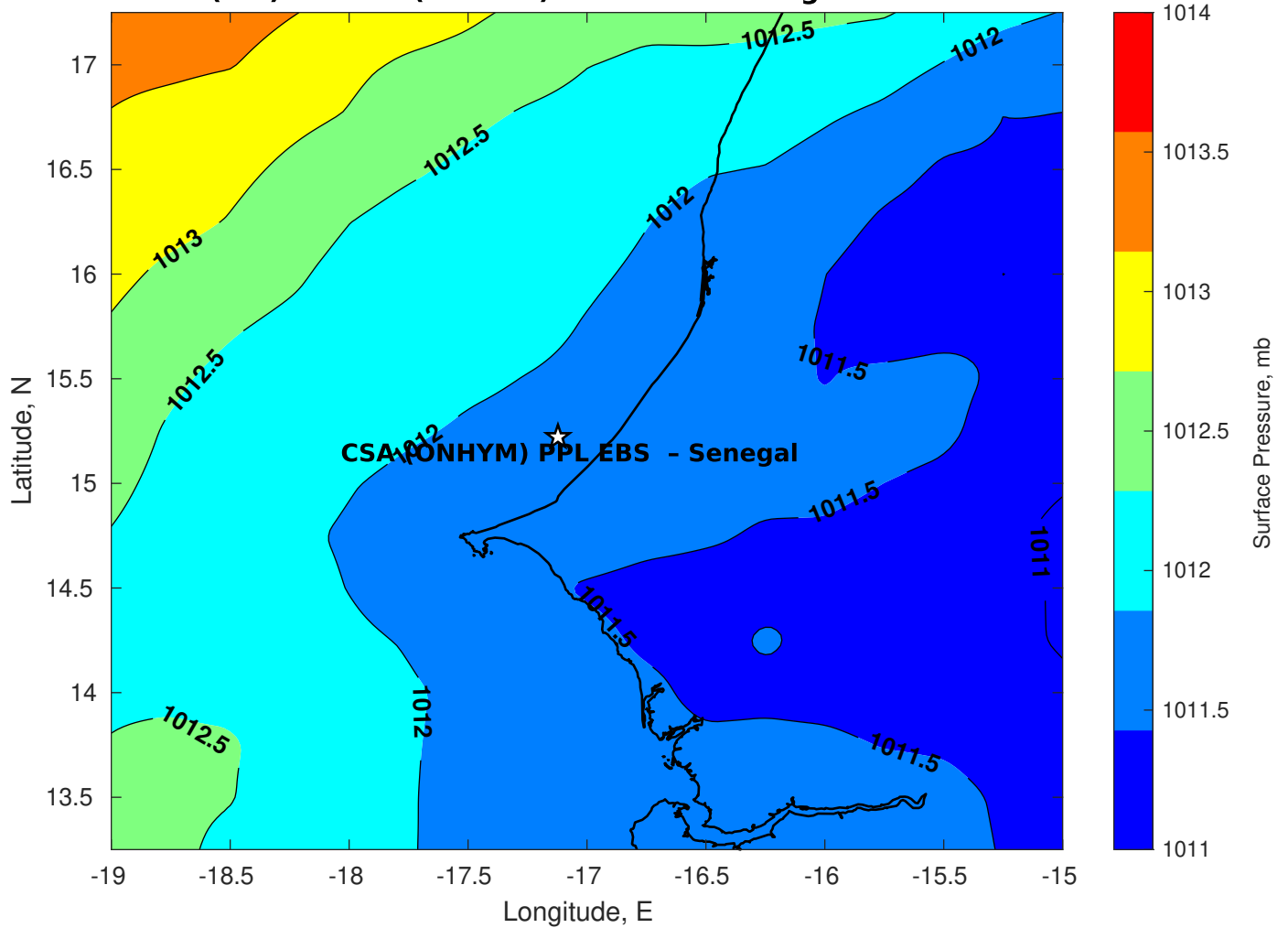
Surface Currents for CSA (ONHYM) PPL EBS - Senegal at 16-Nov-2025 00:00:00



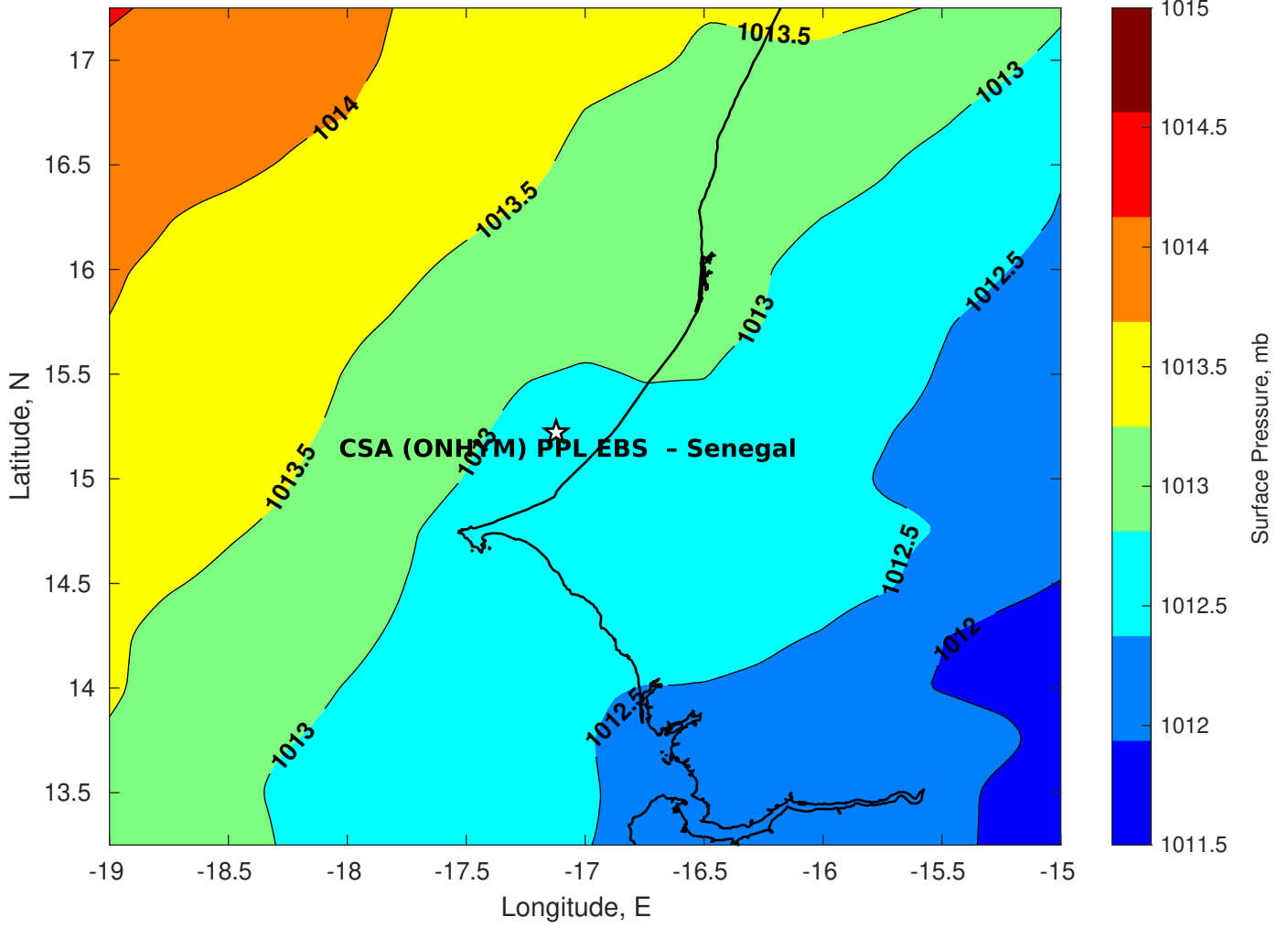
Surface Pressure (mb) for CSA (ONHYM) PPL EBS - Senegal at 19-Nov-2025 00:00:00



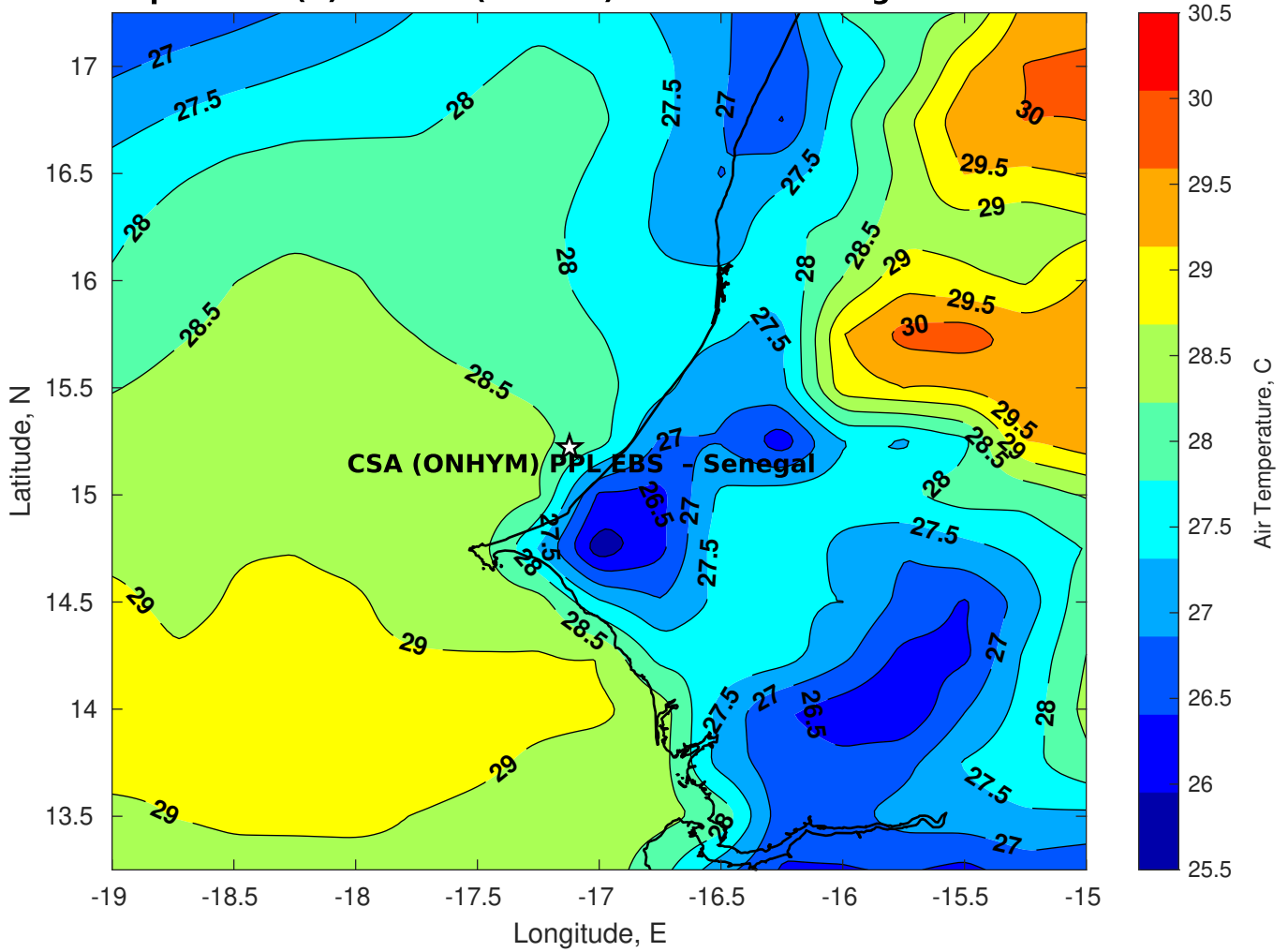
Surface Pressure (mb) for CSA (ONHYM) PPL EBS - Senegal at 20-Nov-2025 00:00:00



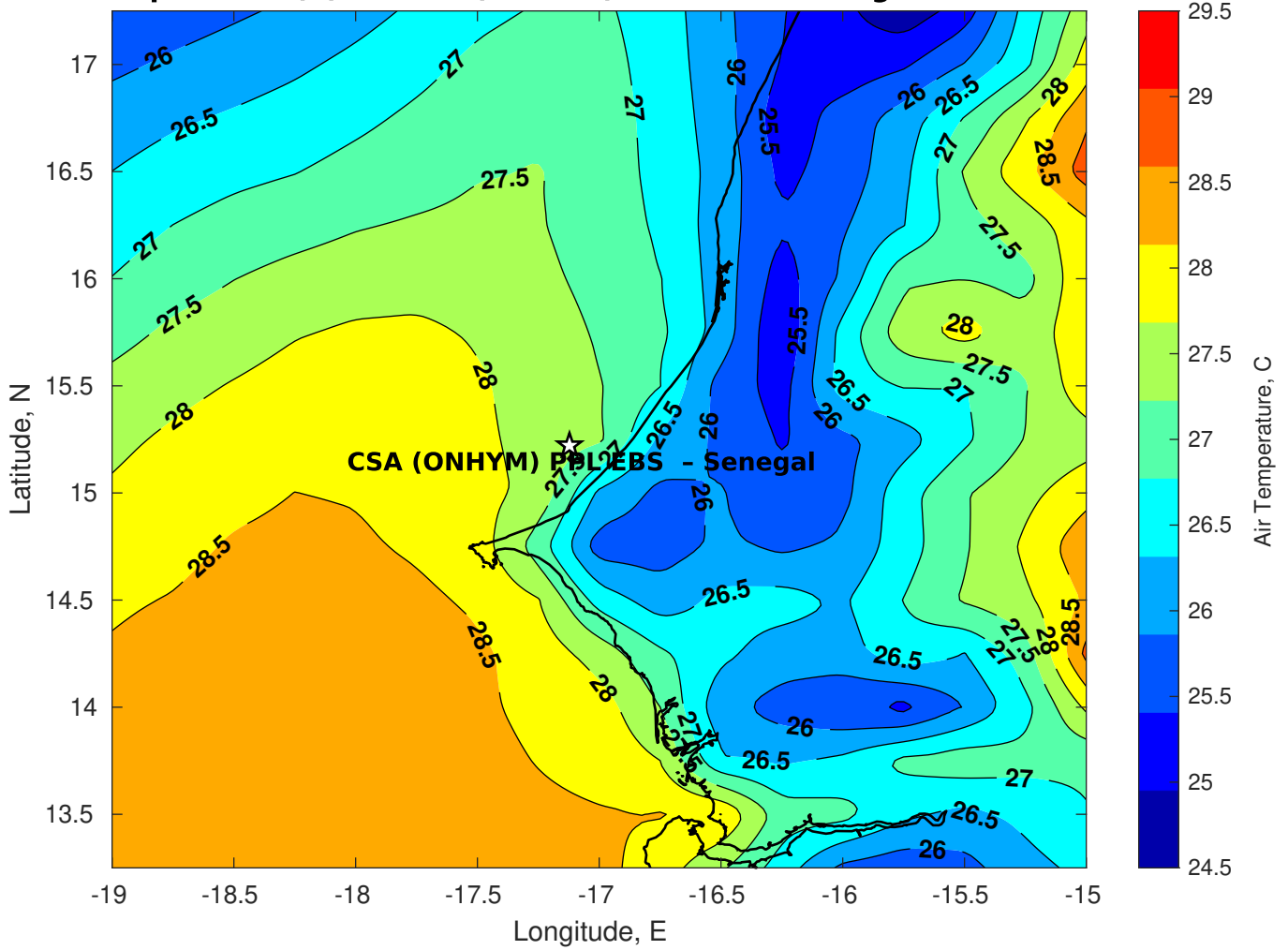
Surface Pressure (mb) for CSA (ONHYM) PPL EBS - Senegal at 21-Nov-2025 00:00:00



Air Temperature (C) for CSA (ONHYM) PPL EBS - Senegal at 19-Nov-2025



Air Temperature (C) for CSA (ONHYM) PPL EBS - Senegal at 19-Nov-2025



Air Temperature (C) for CSA (ONHYM) PPL EBS - Senegal at 19-Nov-2025

