

\*\*\*\*\*

Marine Weather Forecast for CSA (ONHYM) PPL EBS - Ghana

Forecast valid as of 25-Nov-2025 0900 GMT

\*\*\*\*\*

All times are local.

Today

Winds: N, 5-10 kts.

Waves: NW, 3-4 feet, 16-17 sec.

No currents available.

Tonight

Winds: N, 10-15 kts.

Waves: NW, 3-4 feet, 15-16 sec.

No currents available.

Wednesday

Winds: N, 5-10 kts.

Waves: NW, 3-4 feet, 14-15 sec.

No currents available.

Wednesday Night

Winds: N, 10-15 kts.

Waves: NW, 3-4 feet, 13-14 sec.

No currents available.

Thursday

Winds: NW, 10-15 kts.

Waves: NW, 3-4 feet, 13-14 sec.

No currents available.

Thursday Night

Winds: NW, 10-15 kts.

Waves: NW, 3-4 feet, 12-13 sec.

No currents available.

Friday

Winds: NW, 10-15 kts.

Waves: NW, 3-4 feet, 12-13 sec.

No currents available.

Friday Night

Winds: N, 10-15 kts.

Waves: NW, 3-4 feet, 11-12 sec.

No currents available.

Saturday

Winds: N, 10-15 kts.

Waves: N, 3-4 feet, 10-11 sec.

No currents available.

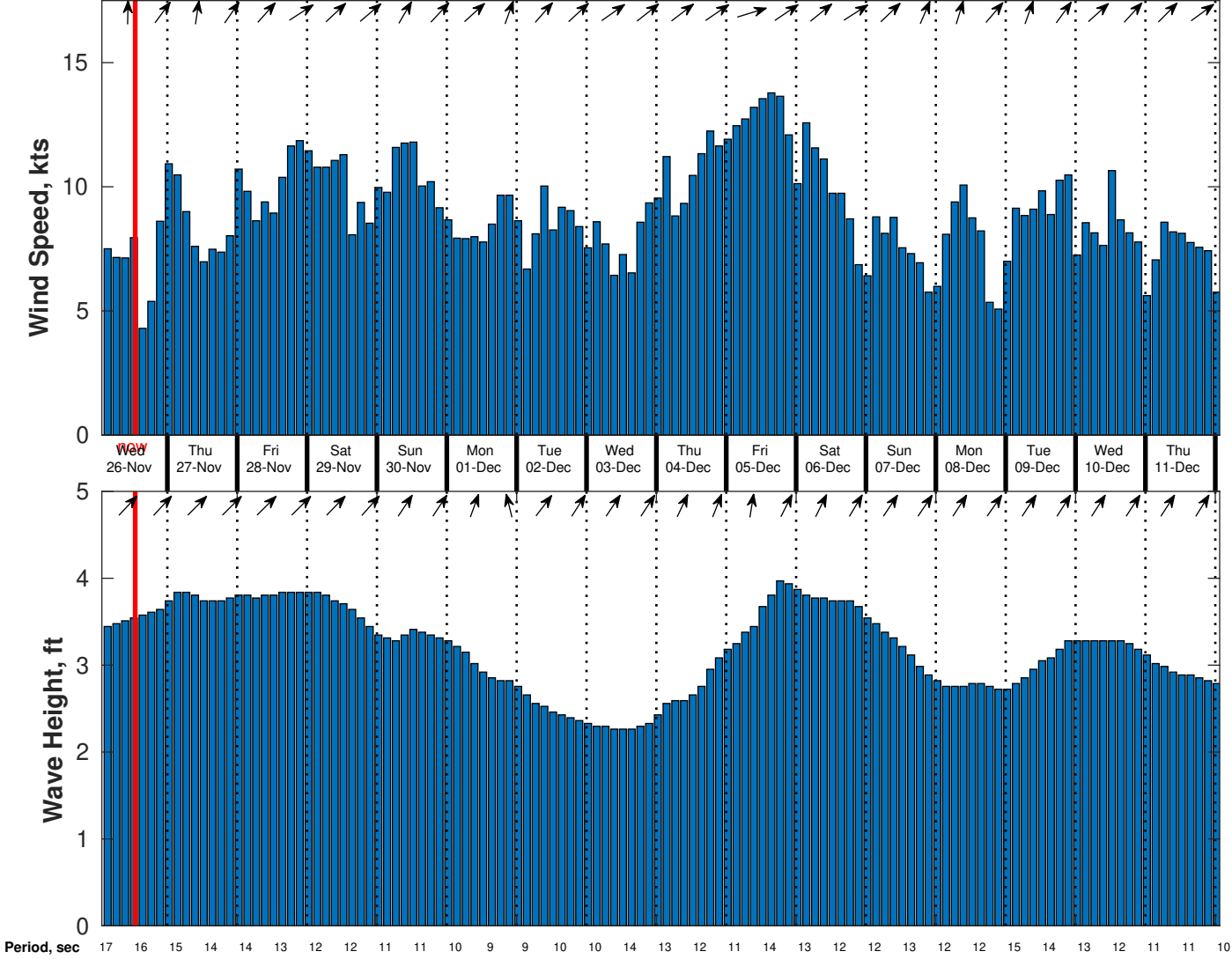
Saturday Night

Winds: NW, 5-10 kts.

Waves: N, 3-4 feet, 10-11 sec.

No currents available.

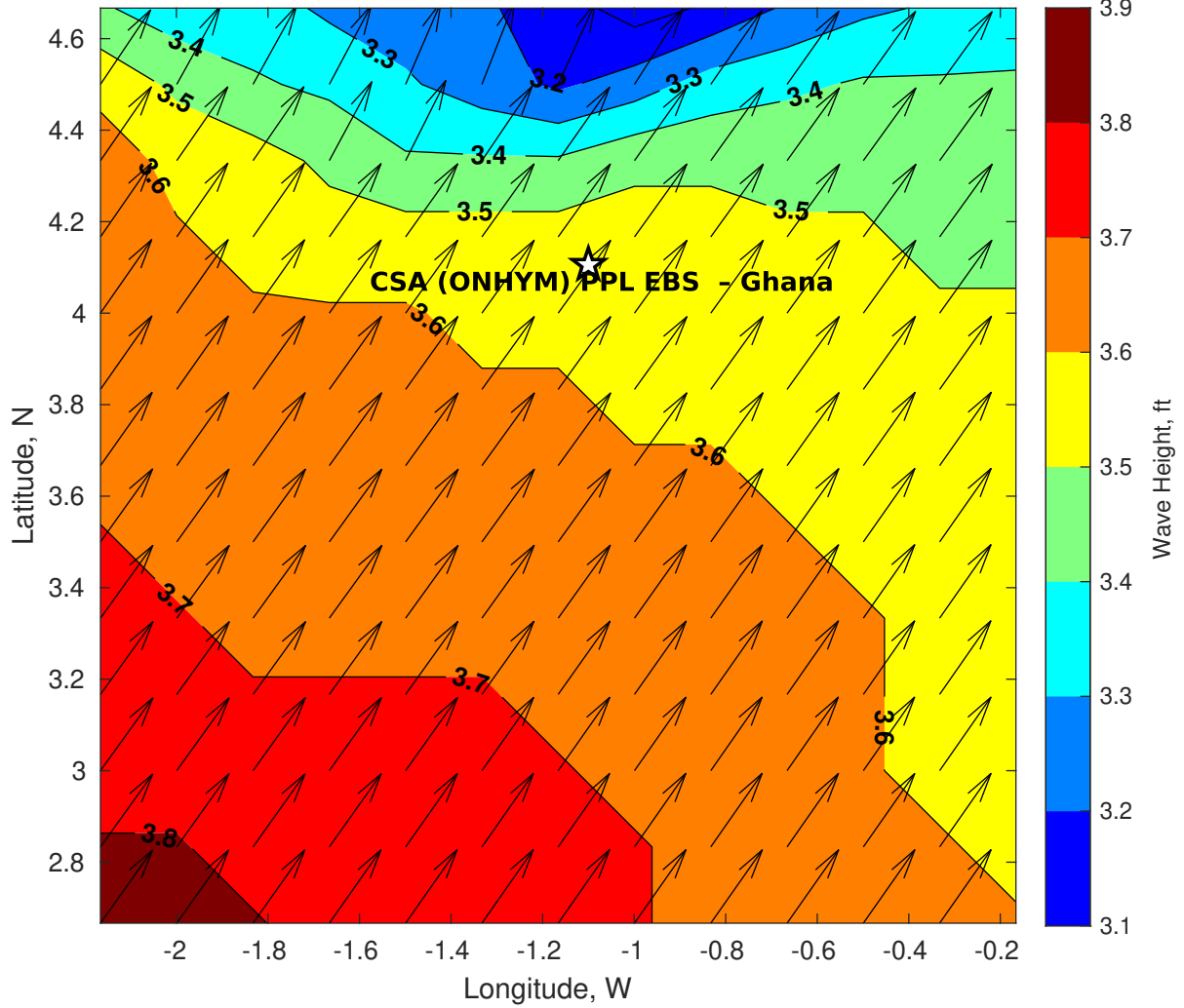
**Wind & Wave Forecast for CSA (ONHYM) PPL EBS - Ghana from 25-Nov-2025 02:00:00 to 11-Dec-2025 02:00:00**



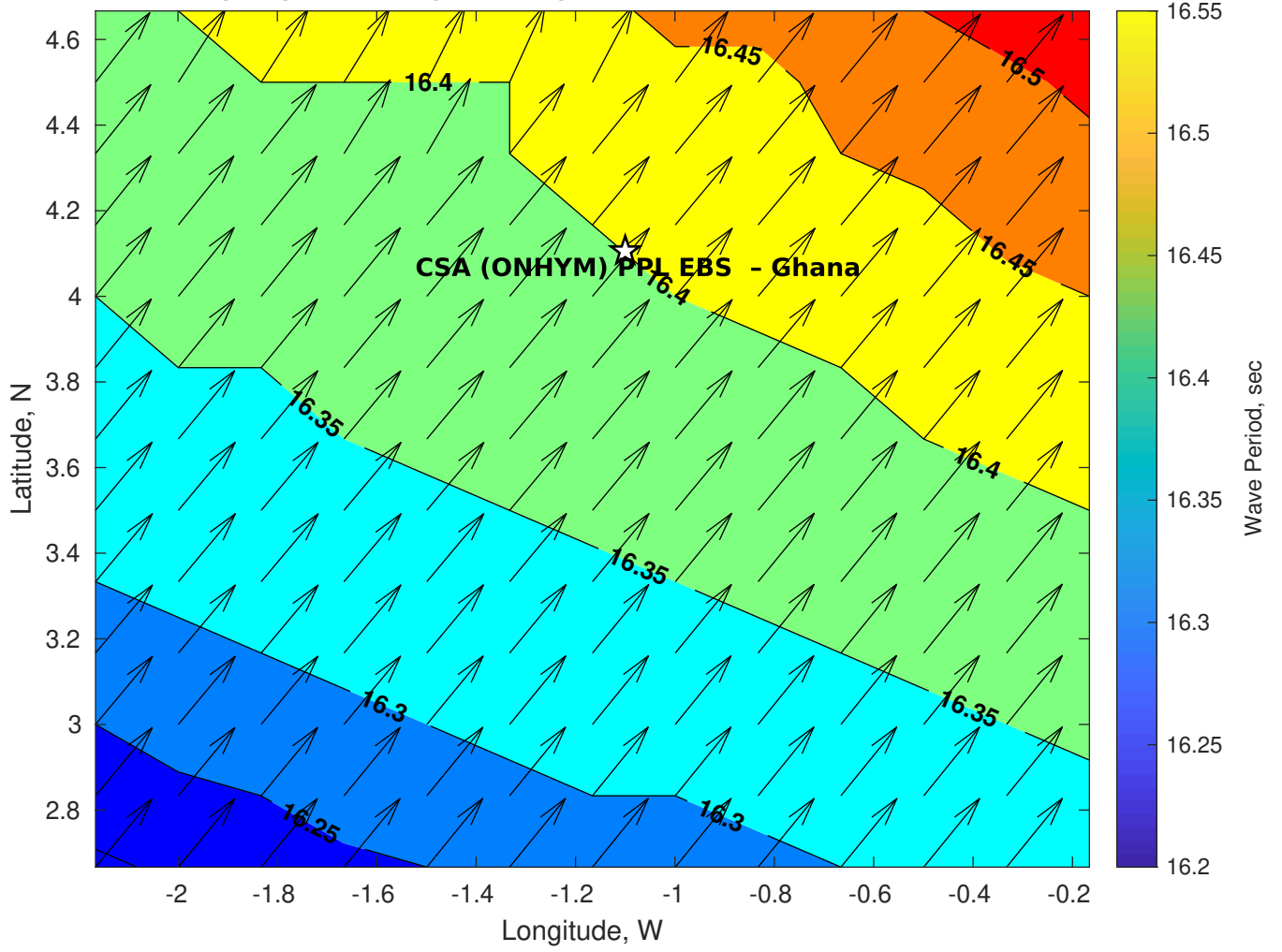
**Met Forecast for CSA (ONHYM) PPL EBS - Ghana for 25-Nov-2025 0900 GMT**

**No Atmospheric Data**

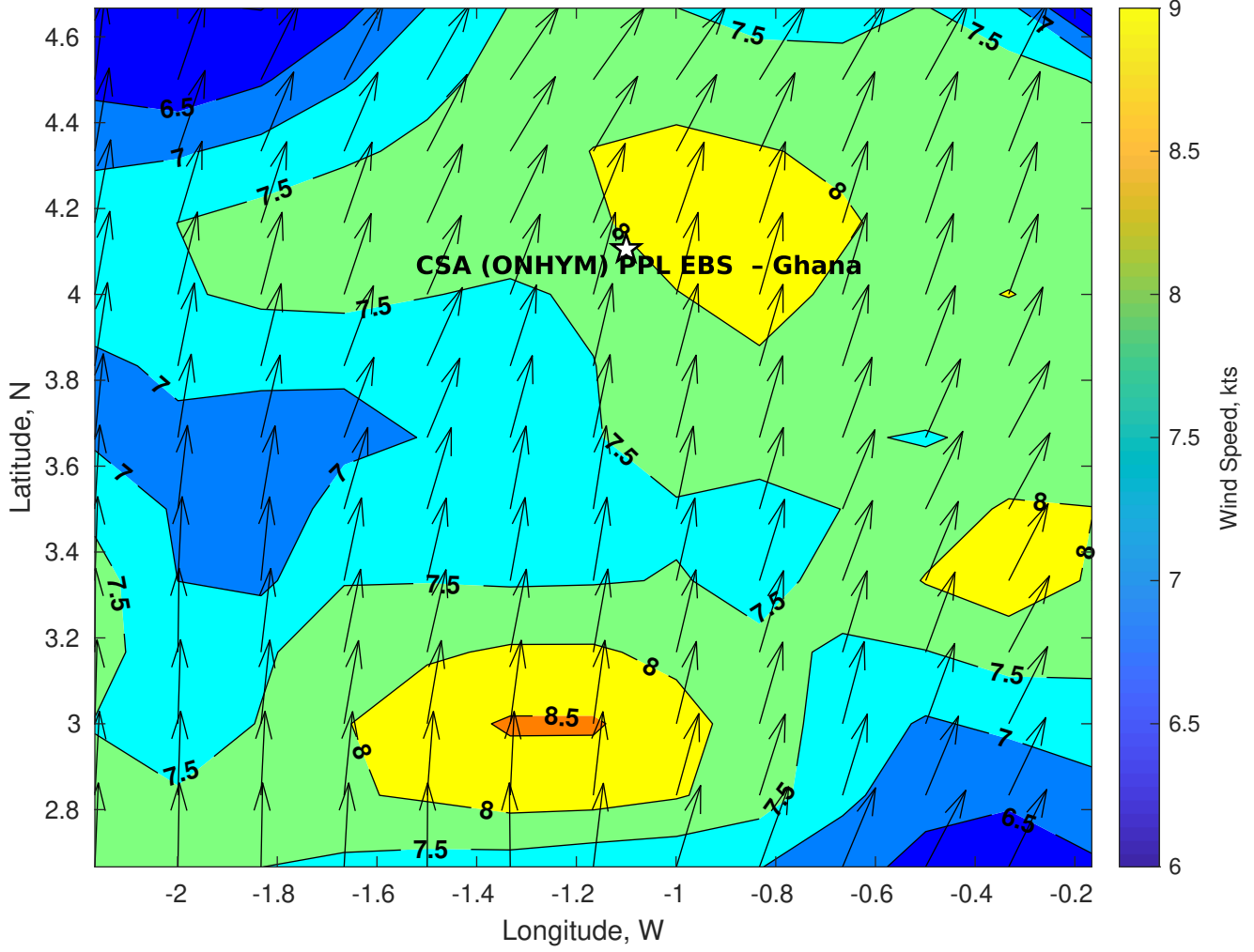
### GFS Wave Height (ft) for CSA (ONHYM) PPL EBS - Ghana at 25-Nov-2025 09:00:00



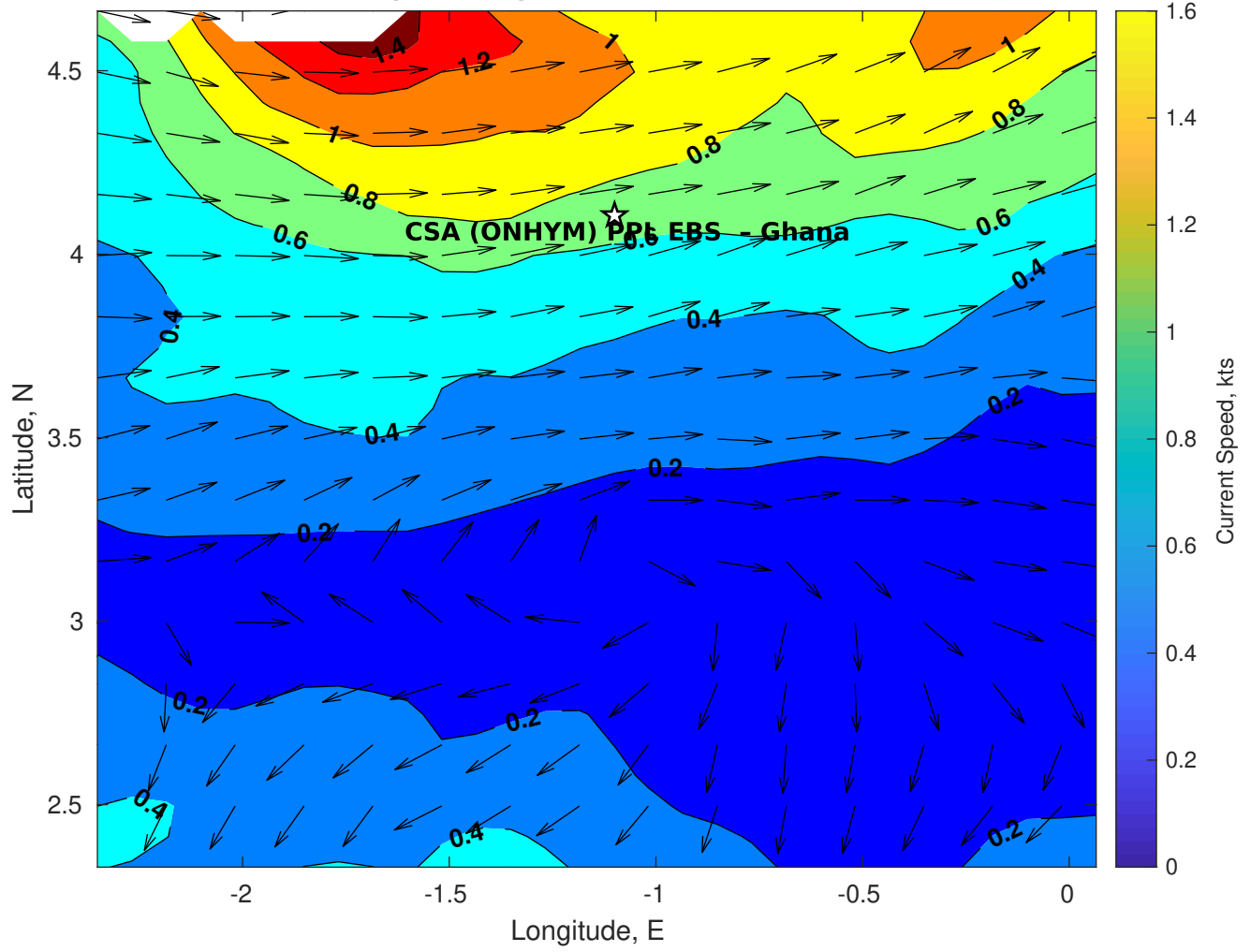
**GFS Wave Period (sec) for CSA (ONHYM) PPL EBS - Ghana at 25-Nov-2025 09:00:00**



**GFS Winds (kts) for CSA (ONHYM) PPL EBS - Ghana at 25-Nov-2025 09:00:00**



**Surface Currents for CSA (ONHYM) PPL EBS - Ghana at 24-Nov-2025 00:00:00**





**No Surface Pressure Data**





**No Surface Pressure Data**



**No Surface Pressure Data**



**No Surface Air Temperature Data**



**No Surface Air Temperature Data**



**No Surface Air Temperature Data**