
Marine Weather Forecast for CSA (ONHYM) PPL EBS - Senegal
Forecast valid as of 28-Nov-2025 0900 GMT

All times are local.

Today

Winds: NE, 15-20 kts.
Waves: N, 4-5 feet, 6-7 sec.
No currents available.

Tonight

Winds: N, 15-20 kts.
Waves: N, 3-4 feet, 6-7 sec.
No currents available.

Saturday

Winds: N, 15-20 kts.
Waves: N, 4-5 feet, 6-7 sec.
No currents available.

Saturday Night

Winds: N, 10-15 kts.
Waves: N, 3-4 feet, 6-7 sec.
No currents available.

Sunday

Winds: N, 10-15 kts.
Waves: NW, 3-4 feet, 13-14 sec.
No currents available.

Sunday Night

Winds: N, 10-15 kts.
Waves: NW, 3-4 feet, 11-12 sec.
No currents available.

Monday

Winds: NE, 25-30 kts.
Waves: N, 6-7 feet, 11-12 sec.
No currents available.

Monday Night

Winds: NE, 20-25 kts.
Waves: N, 7-8 feet, 10-11 sec.
No currents available.

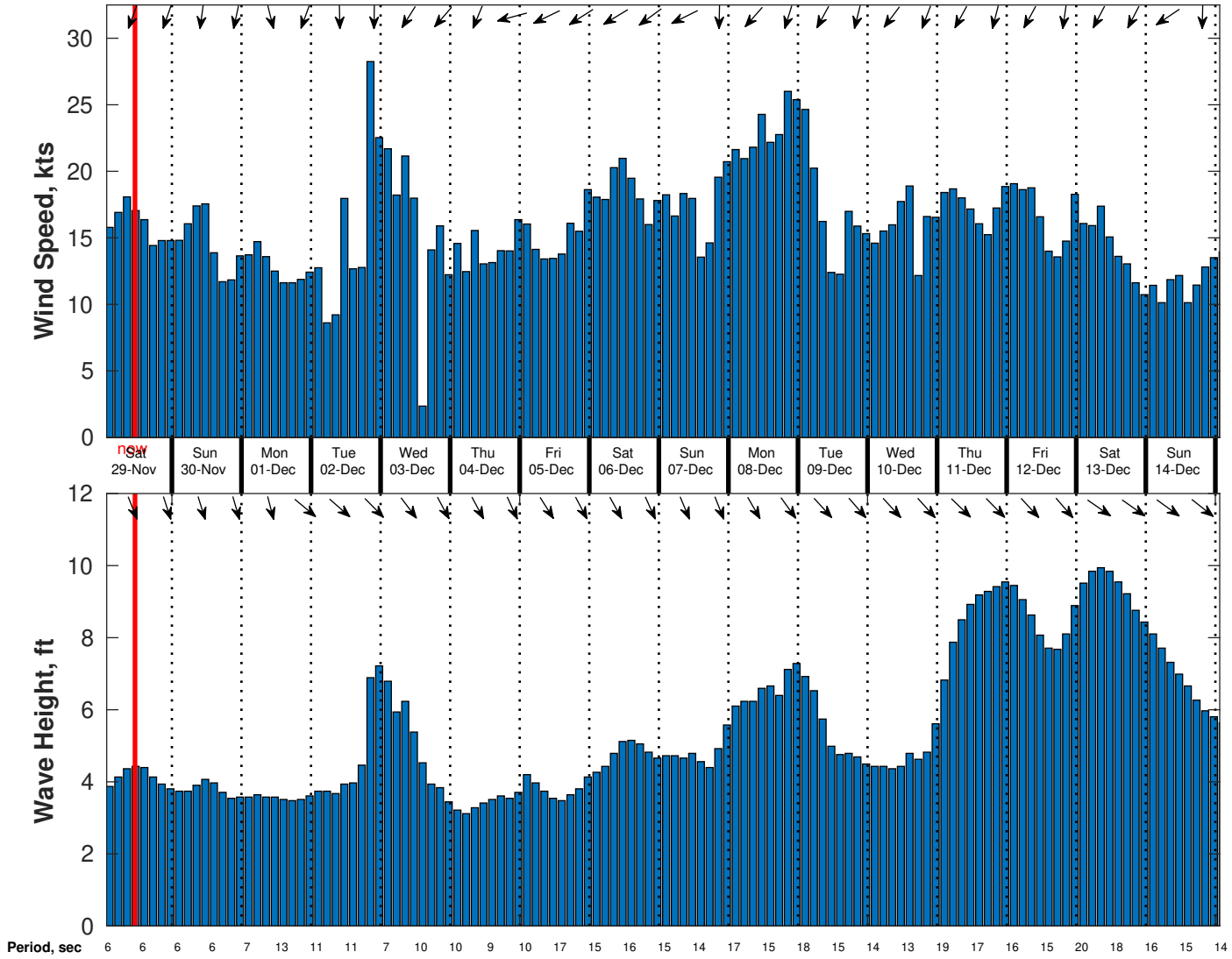
Tuesday

Winds: NE, 20-25 kts.
Waves: N, 6-7 feet, 10-11 sec.
No currents available.

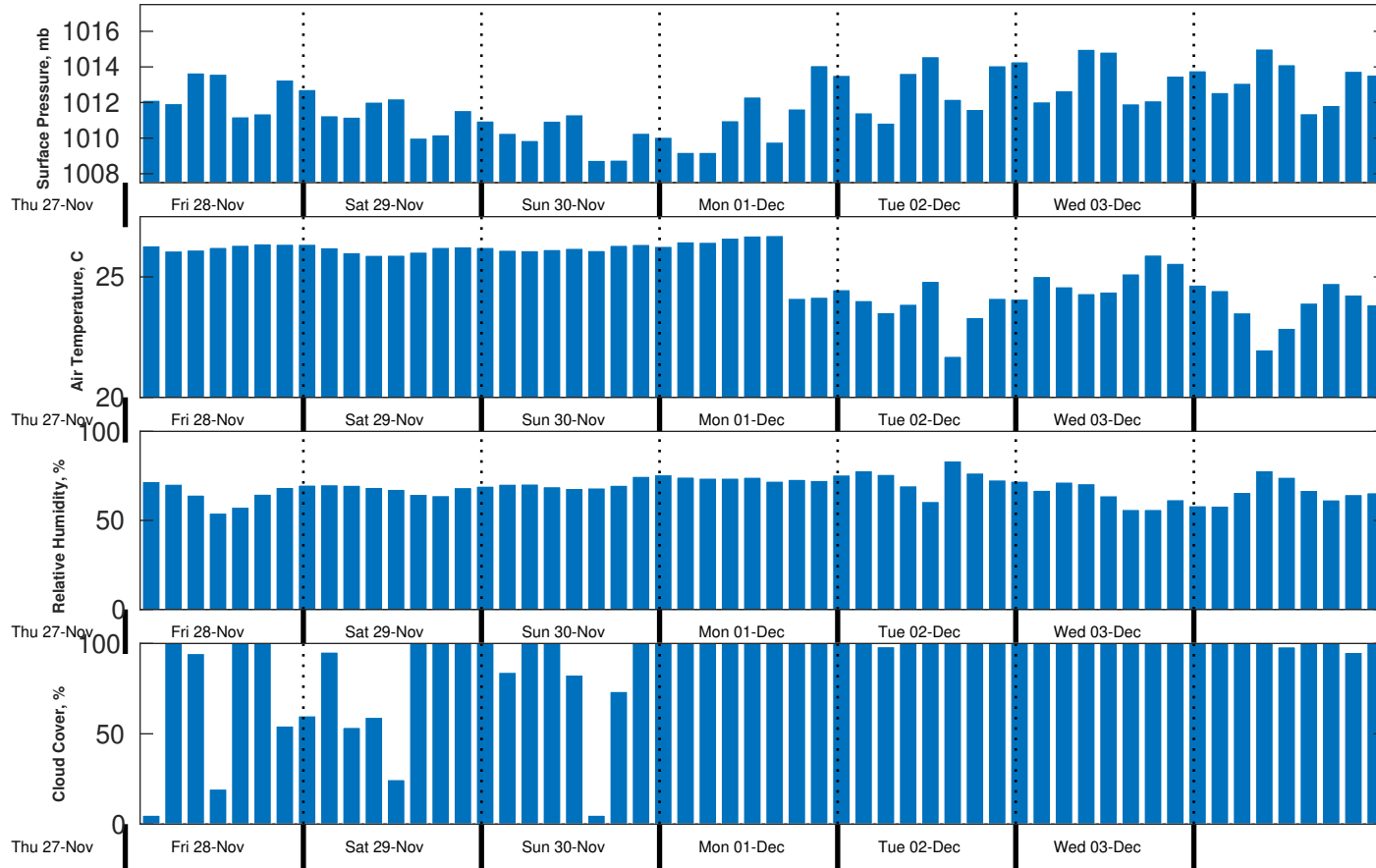
Tuesday Night

Winds: NE, 10-15 kts.
Waves: N, 3-4 feet, 9-10 sec.
No currents available.

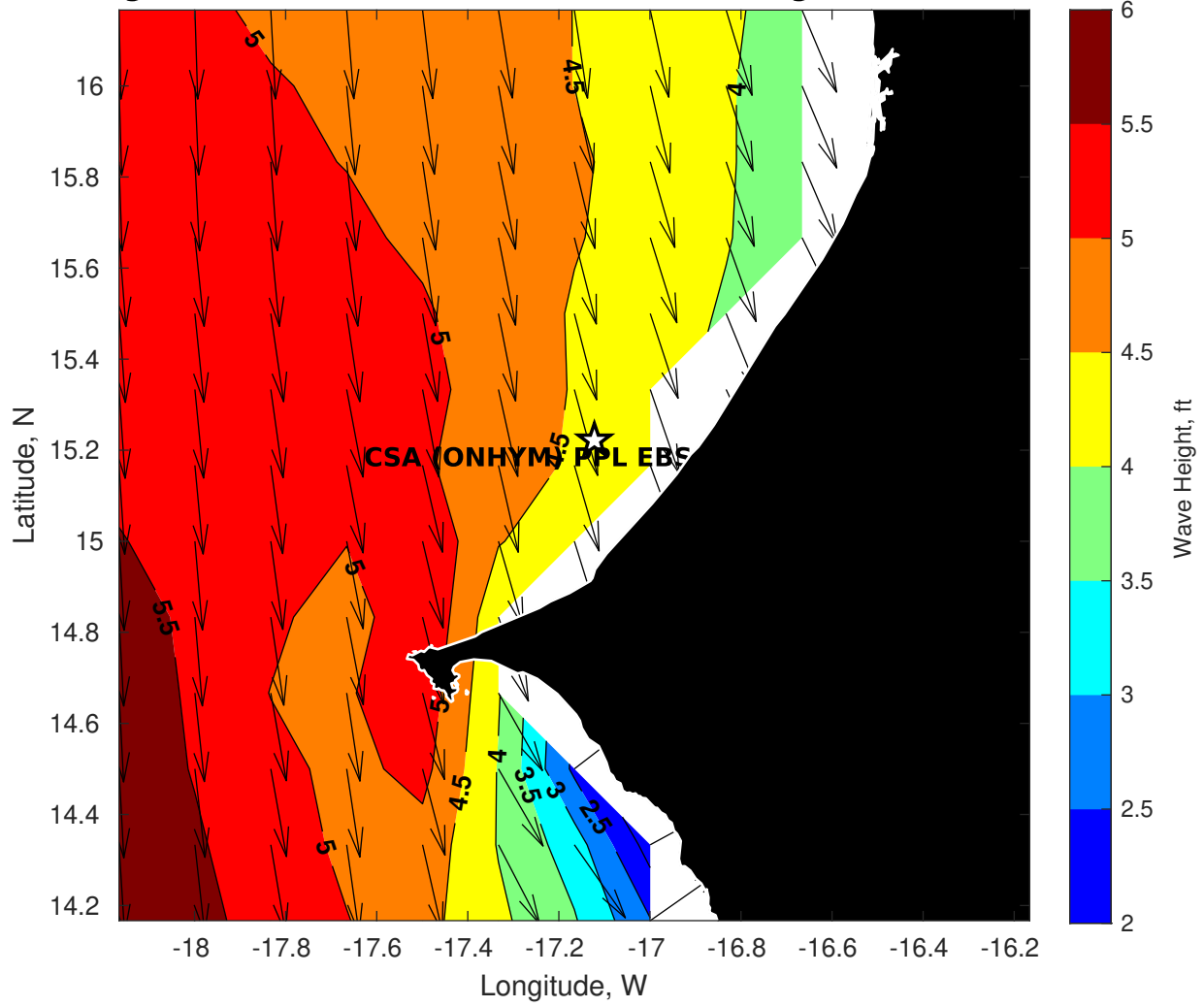
Wind & Wave Forecast for CSA (ONHYM) PPL EBS - Senegal from 28-Nov-2025 01:00:00 to 14-Dec-2025 01:00:00



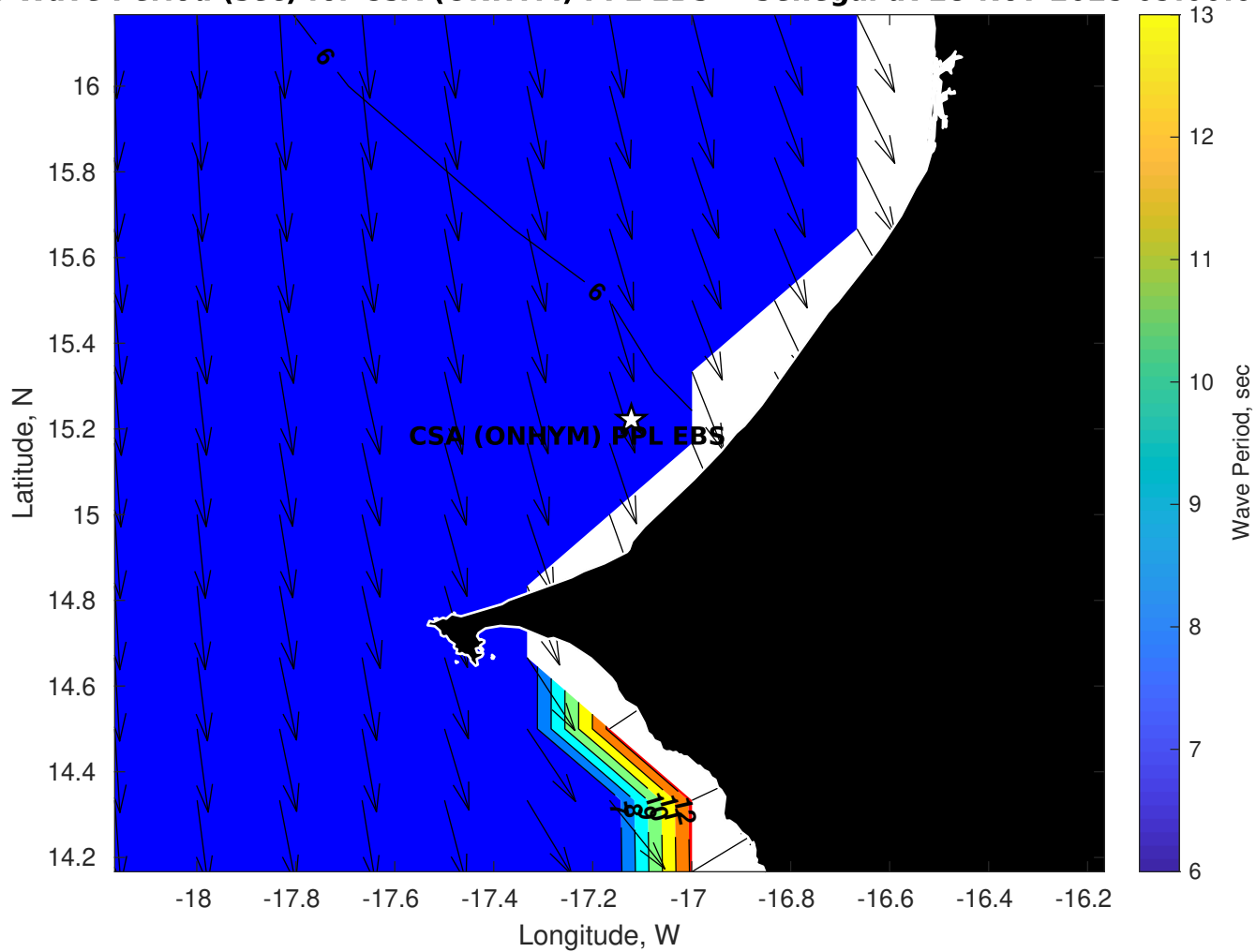
Met Forecast for CSA (ONHYM) PPL EBS - Senegal from 28-Nov-2025 00:00:00 to 05-Dec-2025 00:00:00



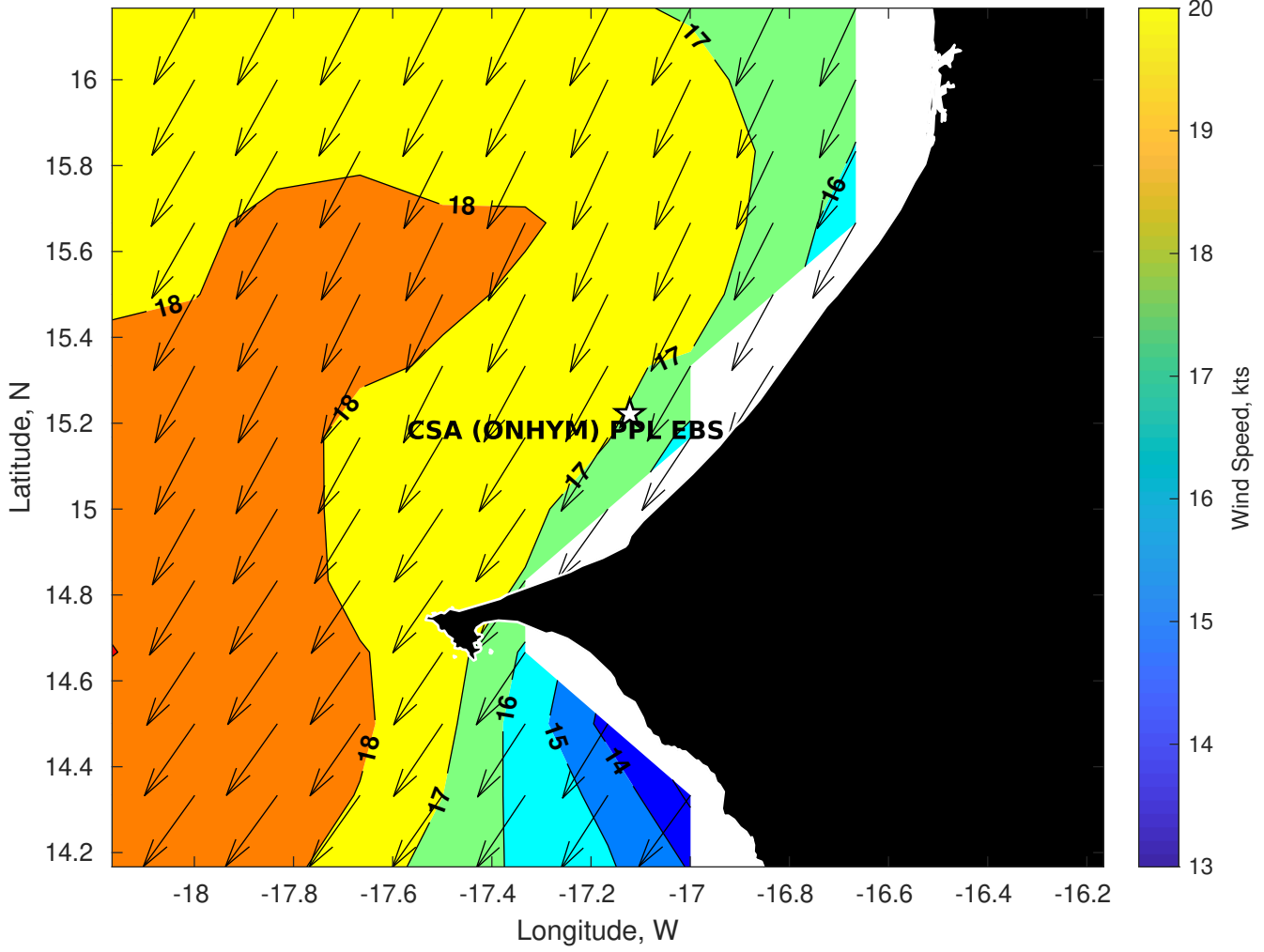
GFS Wave Height (ft) for CSA (ONHYM) PPL EBS - Senegal at 28-Nov-2025 09:00:00



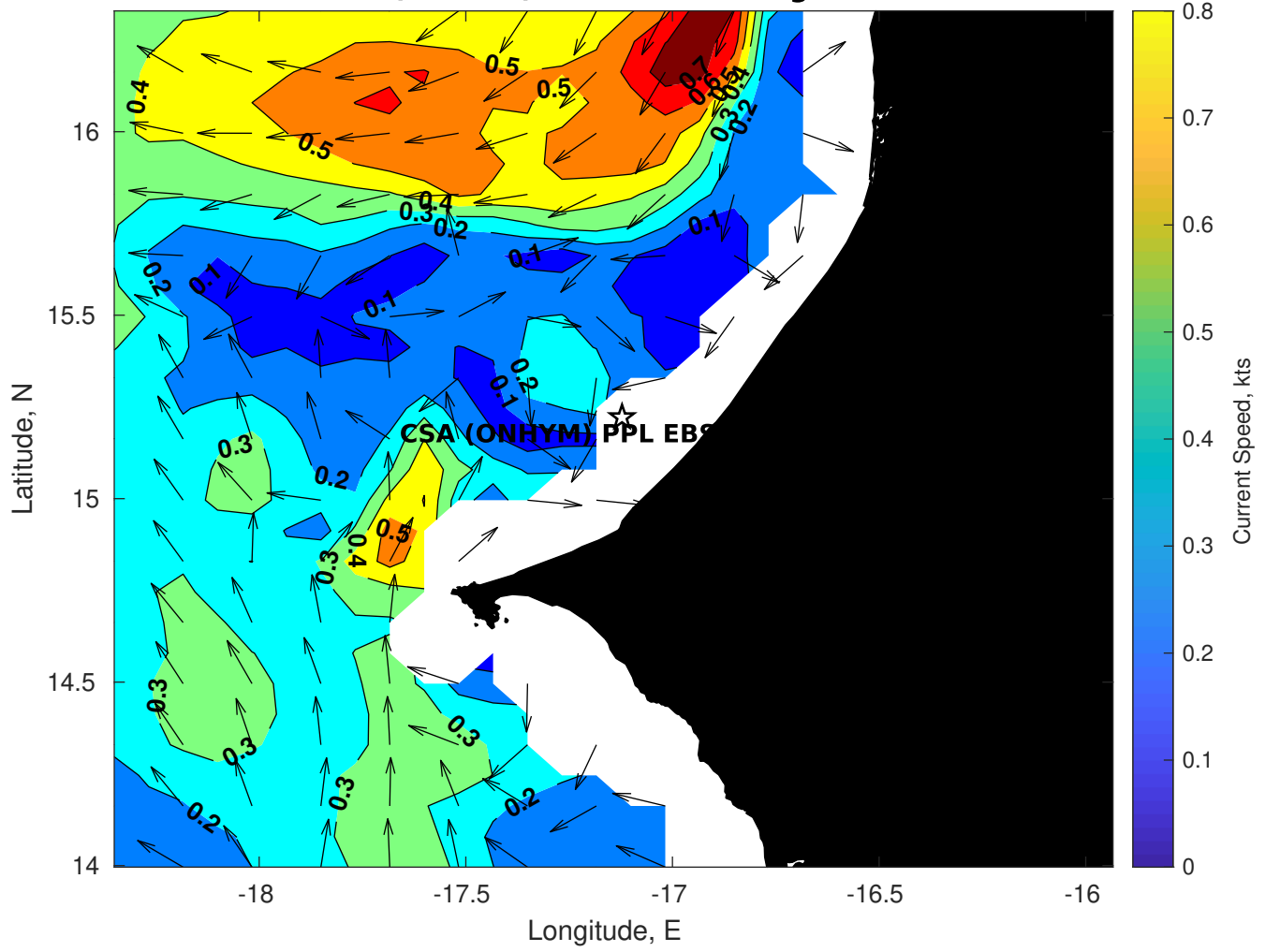
GFS Wave Period (sec) for CSA (ONHYM) PPL EBS - Senegal at 28-Nov-2025 09:00:00



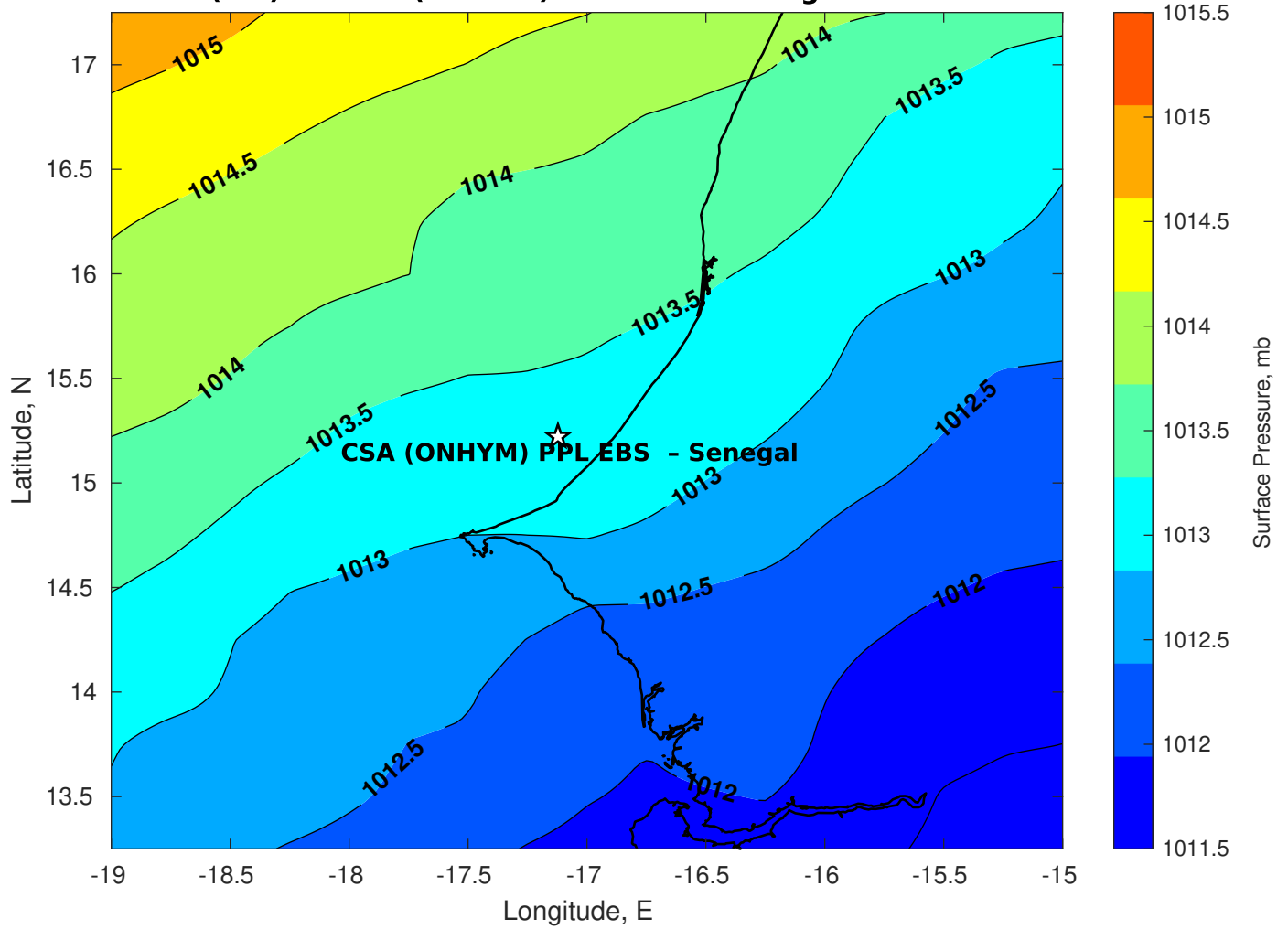
GFS Winds (kts) for CSA (ONHYM) PPL EBS - Senegal at 28-Nov-2025 09:00:00



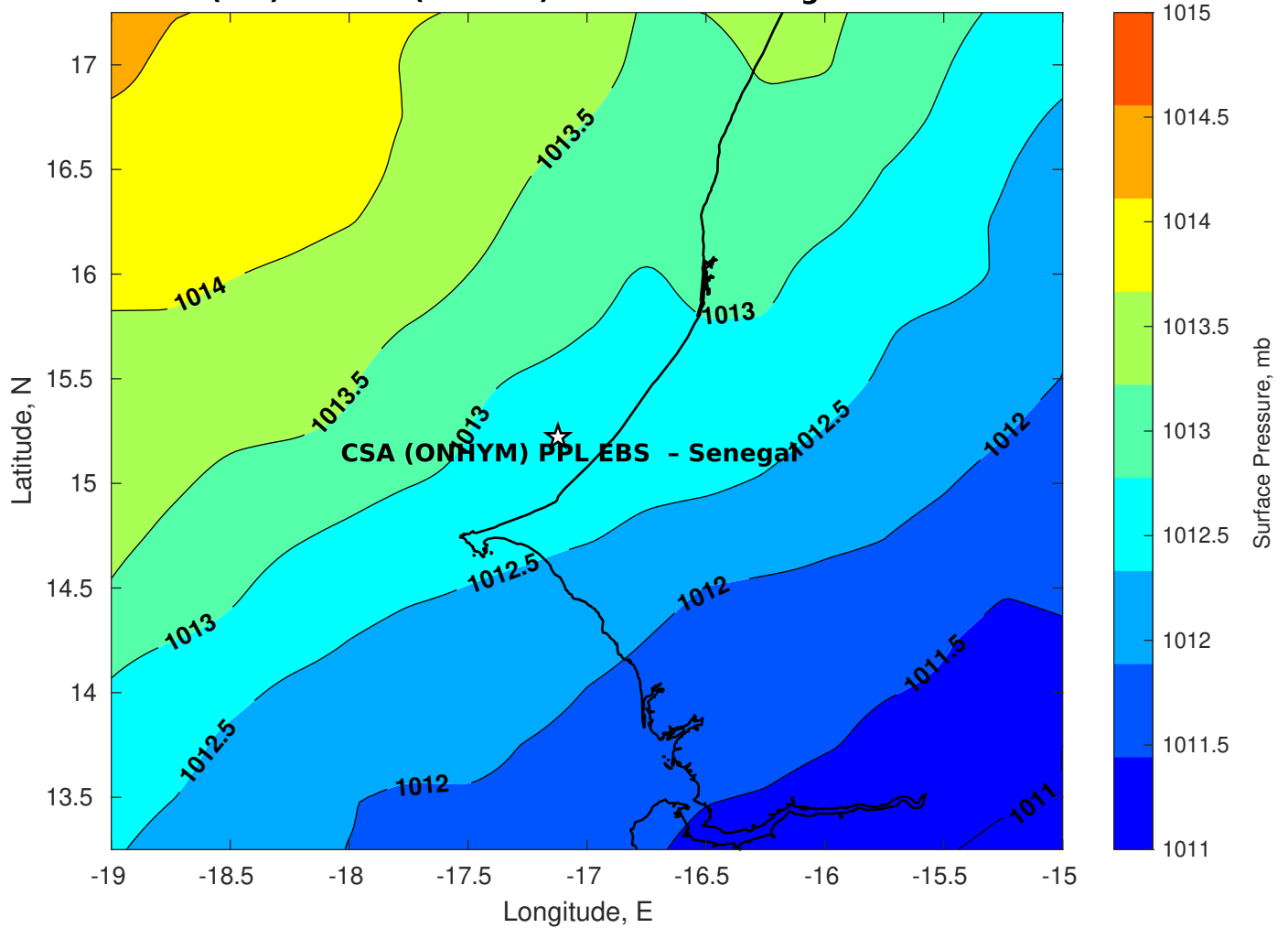
Surface Currents for CSA (ONHYM) PPL EBS - Senegal at 27-Nov-2025 00:00:00



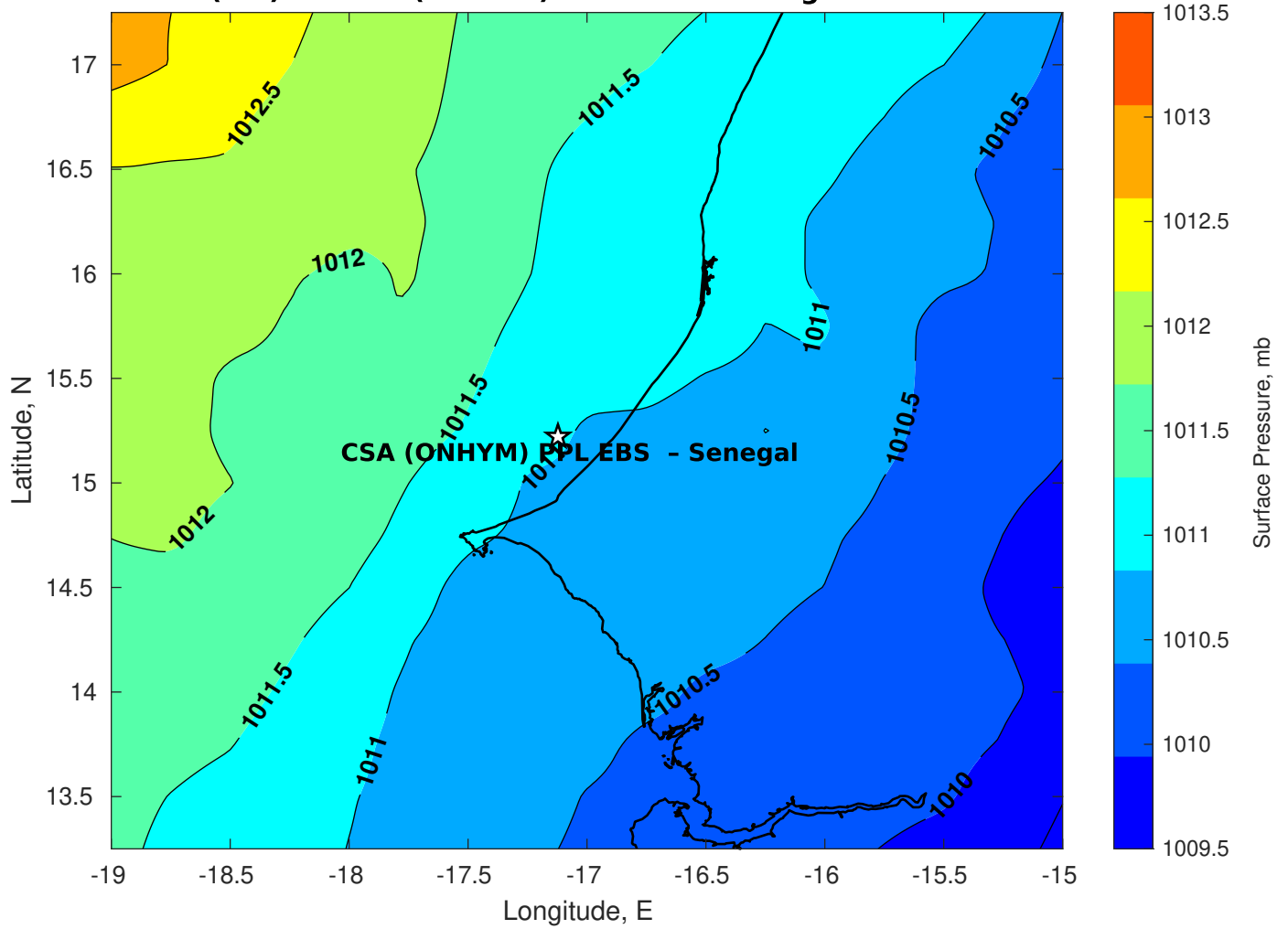
Surface Pressure (mb) for CSA (ONHYM) PPL EBS - Senegal at 28-Nov-2025 00:00:00



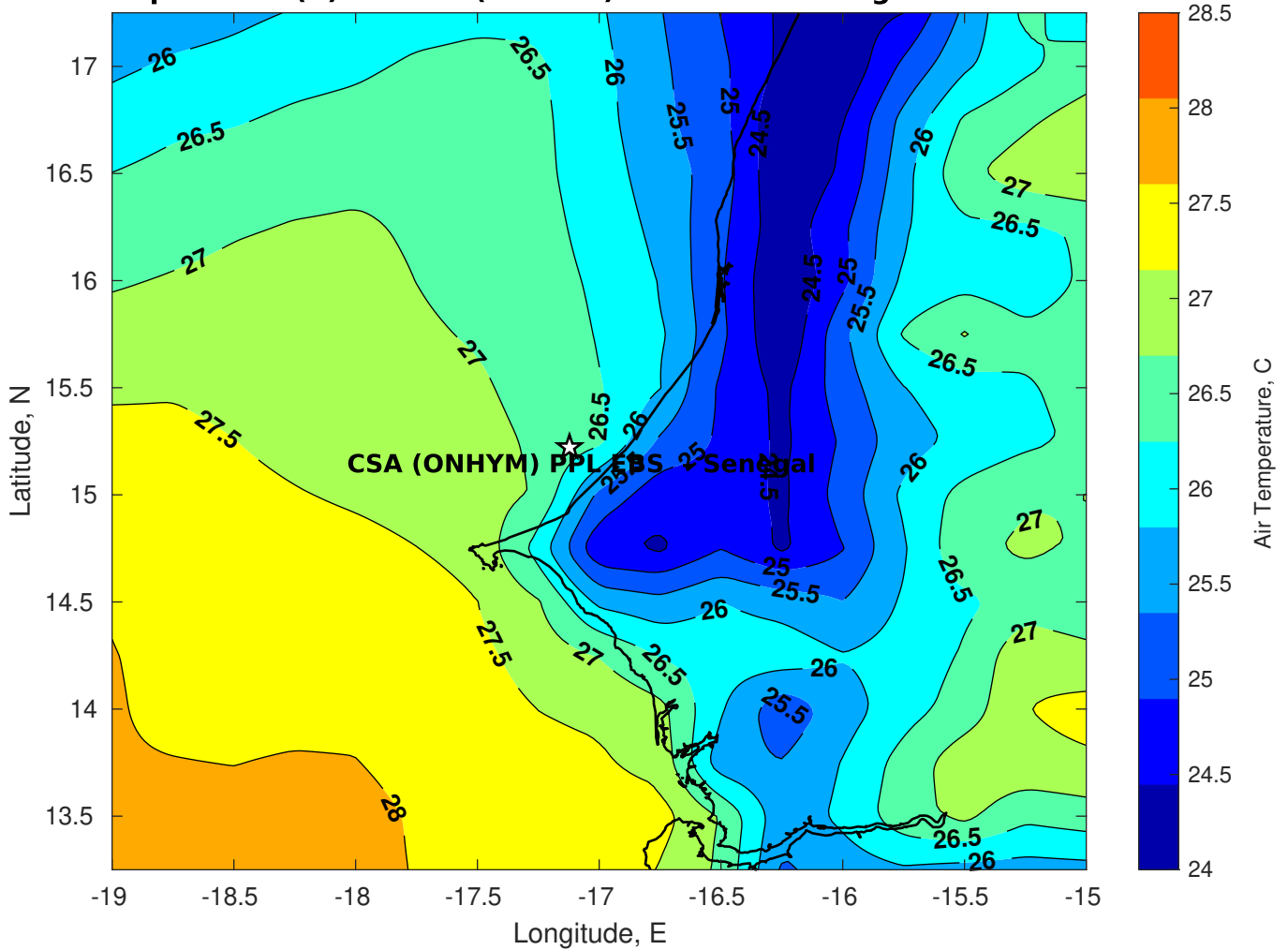
Surface Pressure (mb) for CSA (ONHYM) PPL EBS - Senegal at 29-Nov-2025 00:00:00



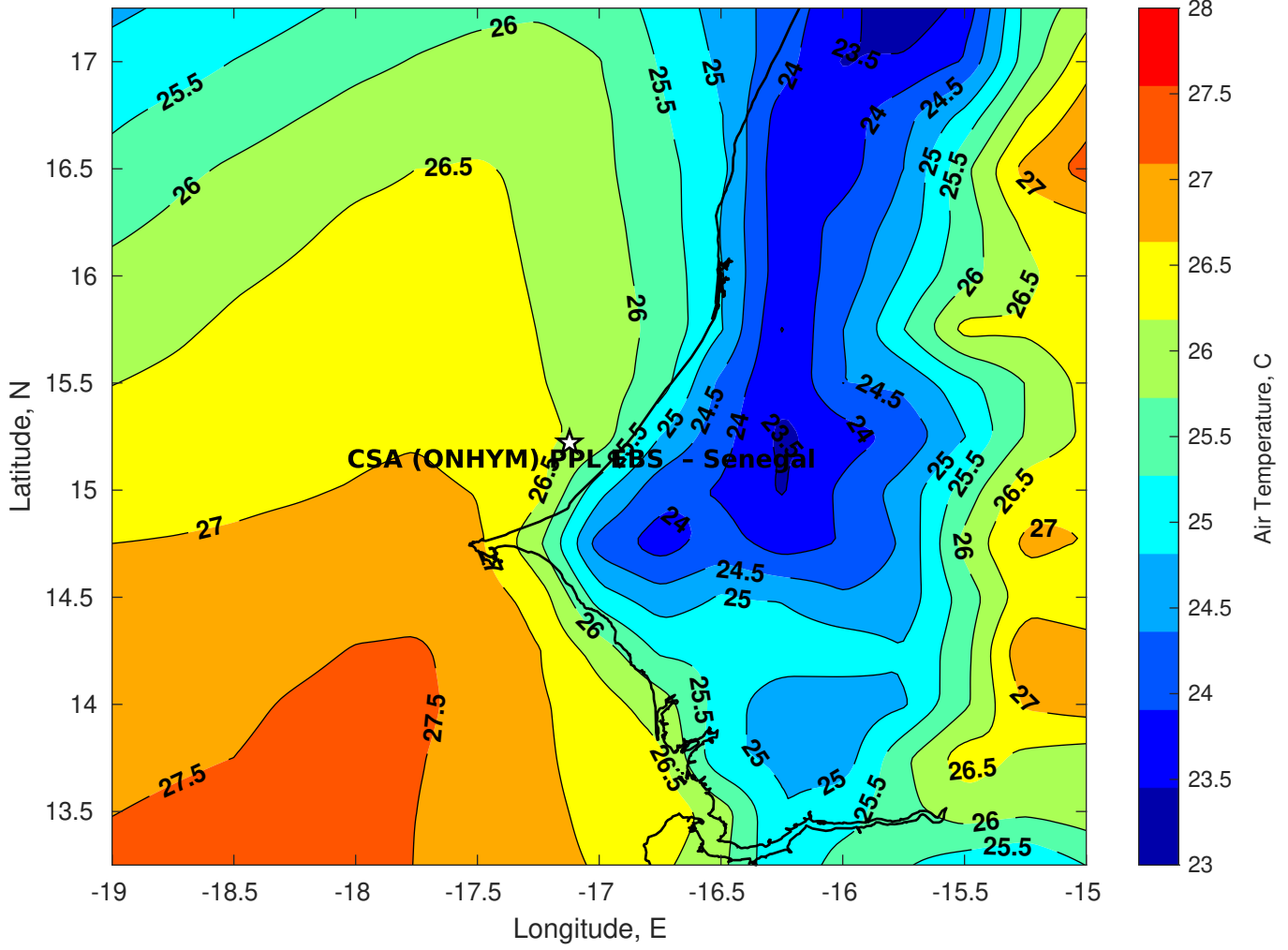
Surface Pressure (mb) for CSA (ONHYM) PPL EBS - Senegal at 30-Nov-2025 00:00:00



Air Temperature (C) for CSA (ONHYM) PPL EBS - Senegal at 28-Nov-2025



Air Temperature (C) for CSA (ONHYM) PPL EBS - Senegal at 28-Nov-2025



Air Temperature (C) for CSA (ONHYM) PPL EBS - Senegal at 28-Nov-2025

