

\*\*\*\*\*

Marine Weather Forecast for CSA (ONHYM) PPL EBS - Sierra Leone

Forecast valid as of 28-Nov-2025 0900 GMT

\*\*\*\*\*

All times are local.

Today

Winds: NW, 5-10 kts.

Waves: N, 1-2 feet, 11-12 sec.

No currents available.

Tonight

Winds: W, 10-15 kts.

Waves: N, 1-2 feet, 11-12 sec.

No currents available.

Saturday

Winds: NW, 10-15 kts.

Waves: N, 1-2 feet, 10-11 sec.

No currents available.

Saturday Night

Winds: W, 5-10 kts.

Waves: N, 1-2 feet, 10-11 sec.

No currents available.

Sunday

Winds: W, 5-10 kts.

Waves: N, 1-2 feet, 10-11 sec.

No currents available.

Sunday Night

Winds: NW, 5-10 kts.

Waves: N, 1-2 feet, 10-11 sec.

No currents available.

Monday

Winds: NW, 5-10 kts.

Waves: N, 1-2 feet, 9-10 sec.

No currents available.

Monday Night

Winds: NW, 10-15 kts.

Waves: N, 1-2 feet, 9-10 sec.

No currents available.

Tuesday

Winds: E, 5-10 kts.

Waves: N, 1-2 feet, 11-12 sec.

No currents available.

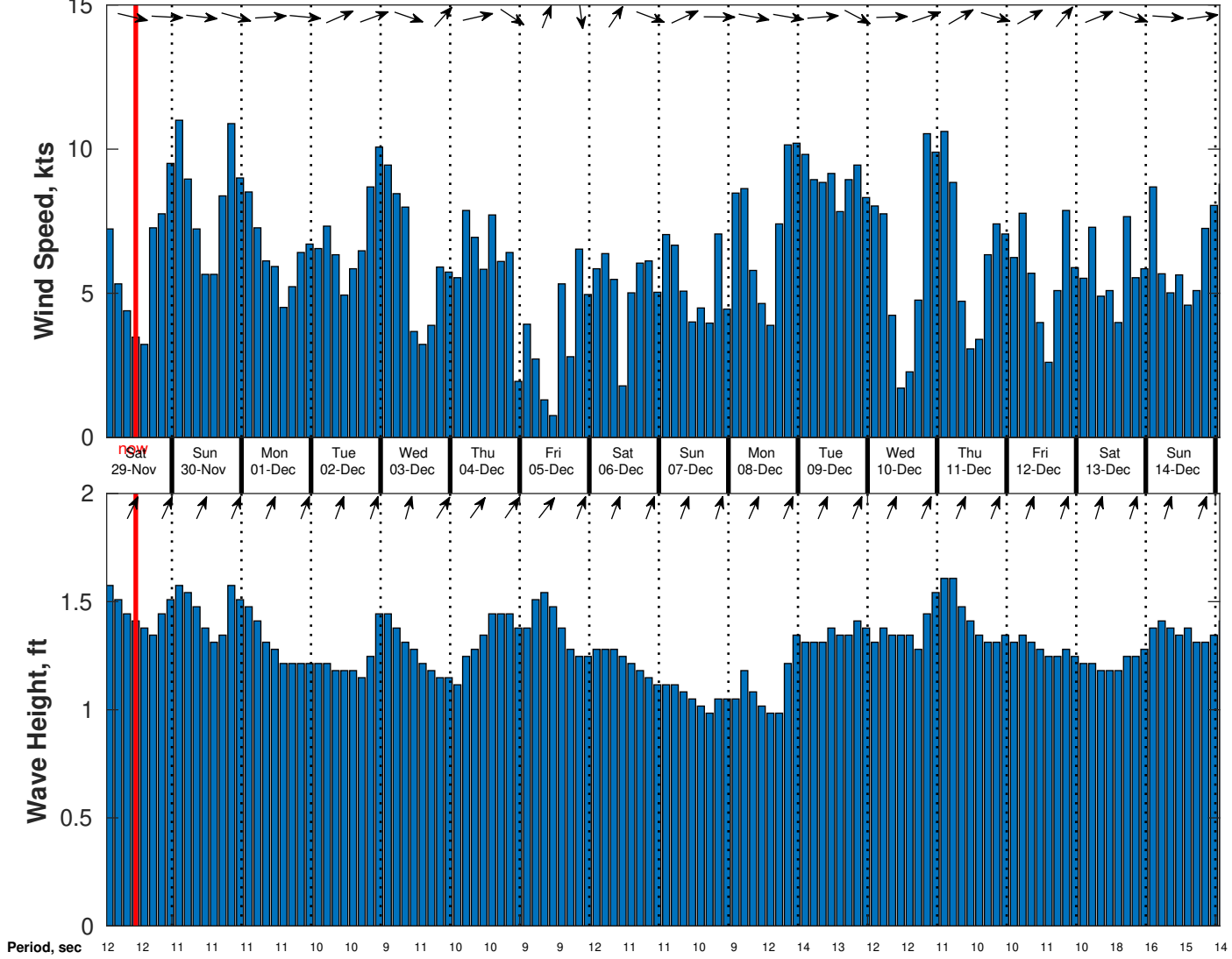
Tuesday Night

Winds: W, 5-10 kts.

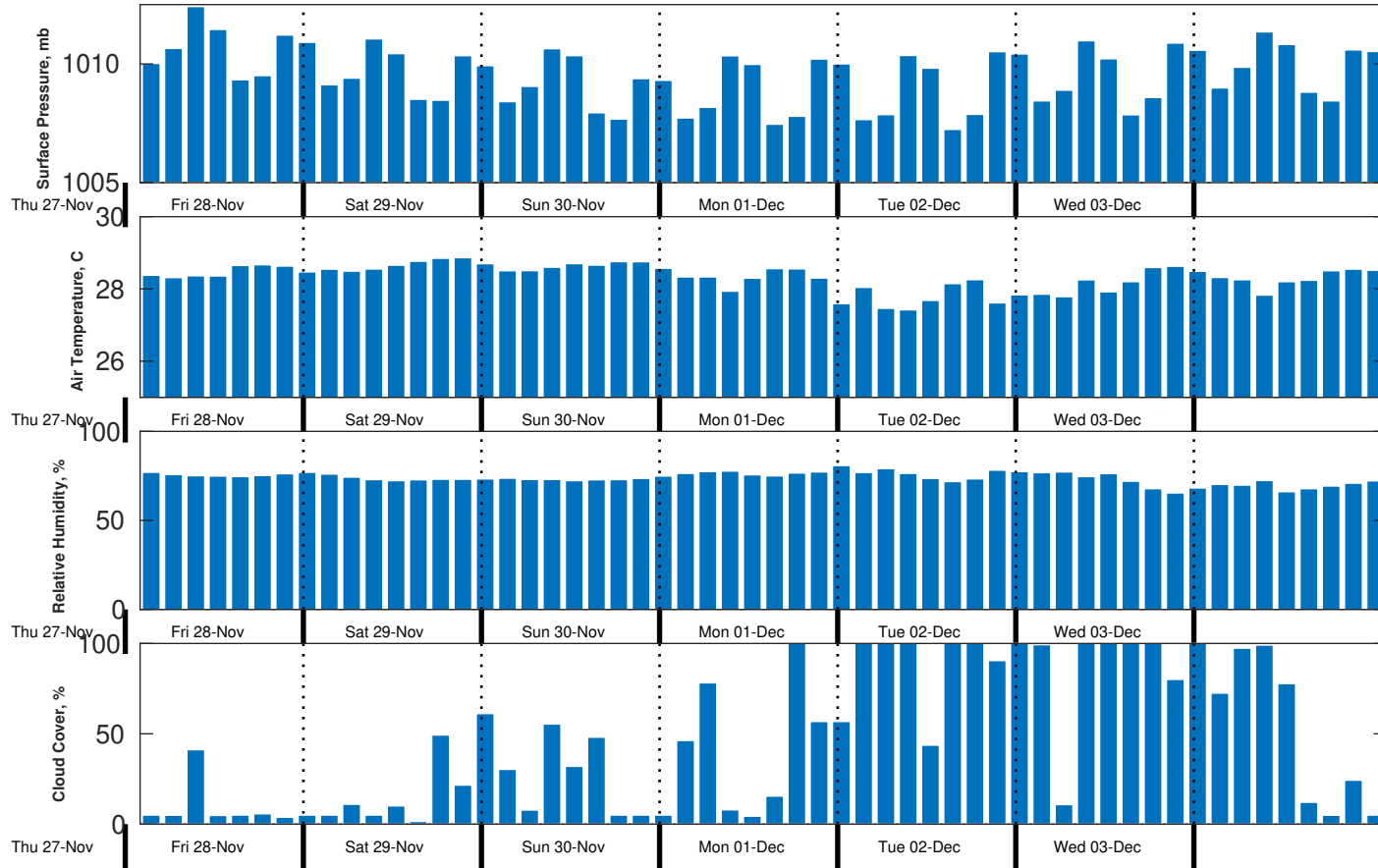
Waves: NW, 1-2 feet, 10-11 sec.

No currents available.

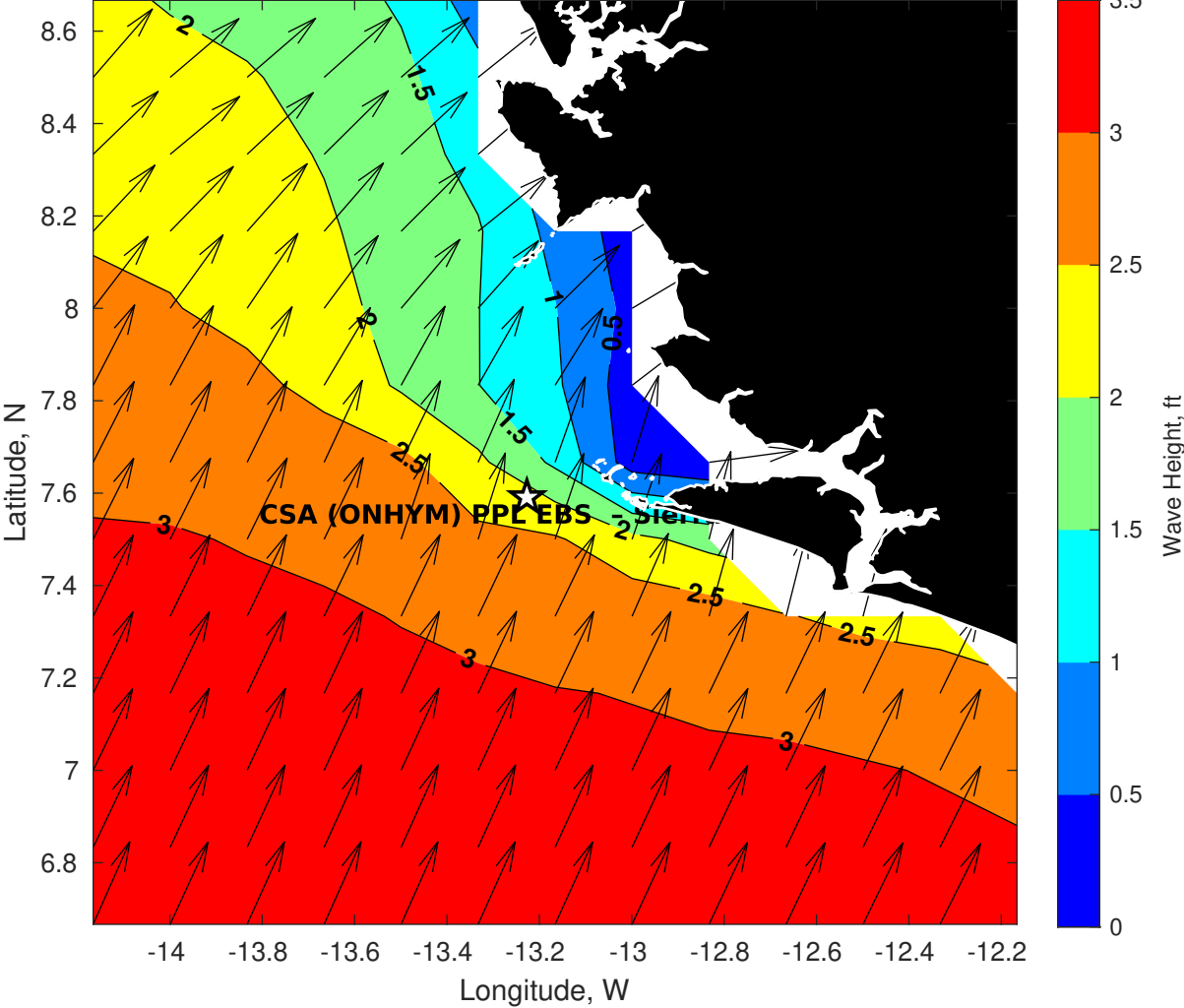
**Wind & Wave Forecast for CSA (ONHYM) PPL EBS - Sierra Leone from 28-Nov-2025 01:00:00 to 14-Dec-2025 01:00:00**



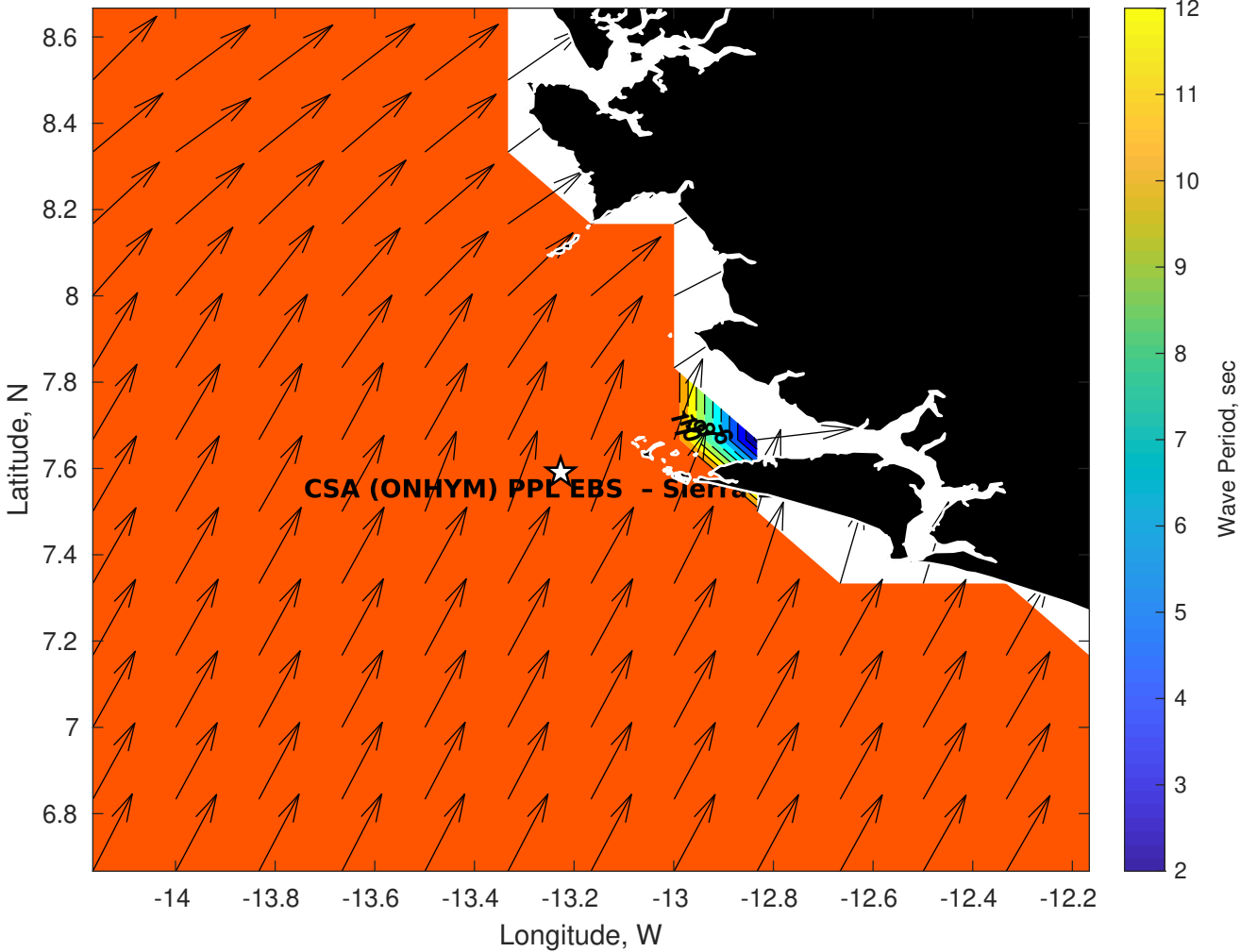
**Met Forecast for CSA (ONHYM) PPL EBS - Sierra Leone from 28-Nov-2025 00:00:00 to 05-Dec-2025 00:00:00**



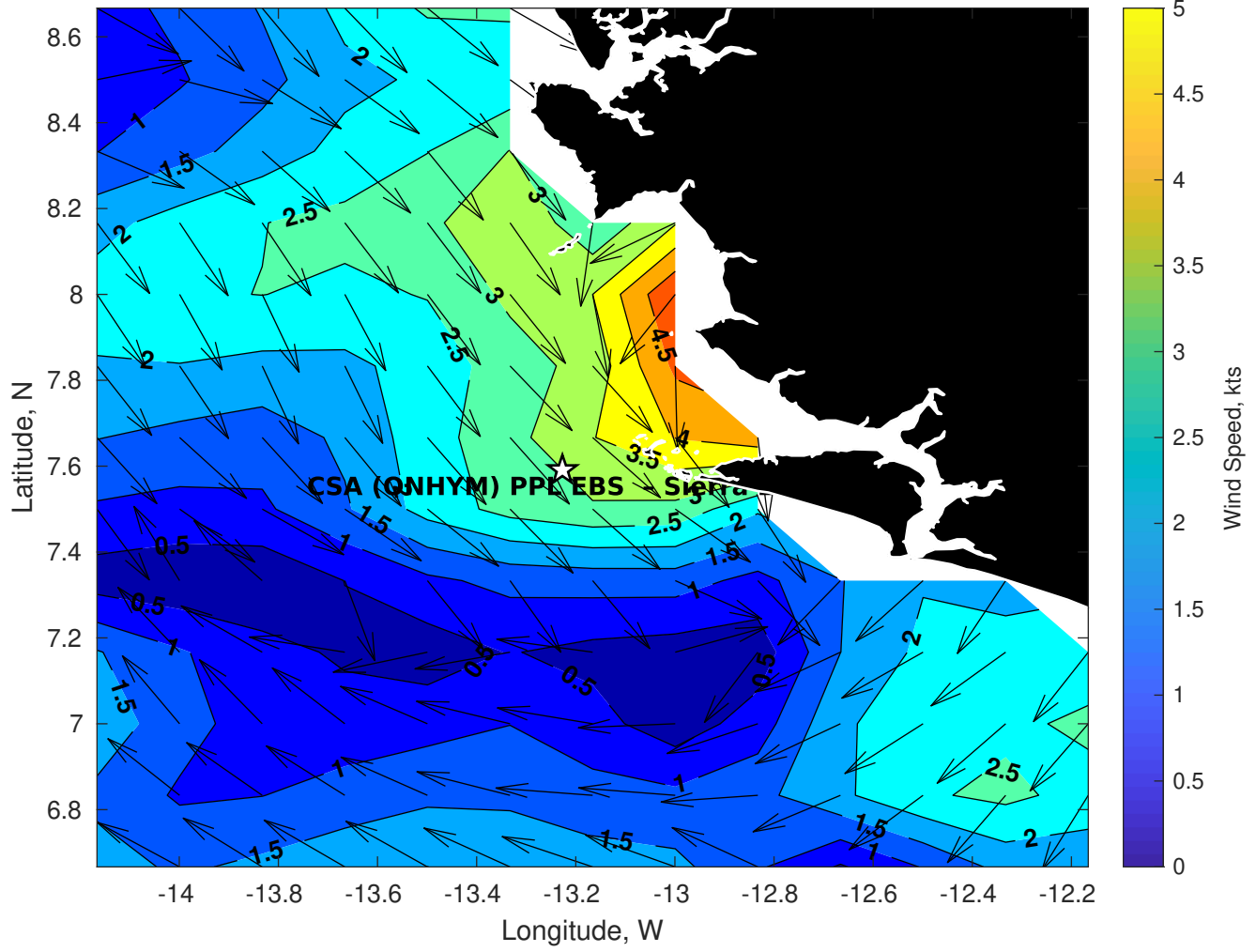
GFS Wave Height (ft) for CSA (ONHYM) PPL EBS - Sierra Leone at 28-Nov-2025 09:00:00



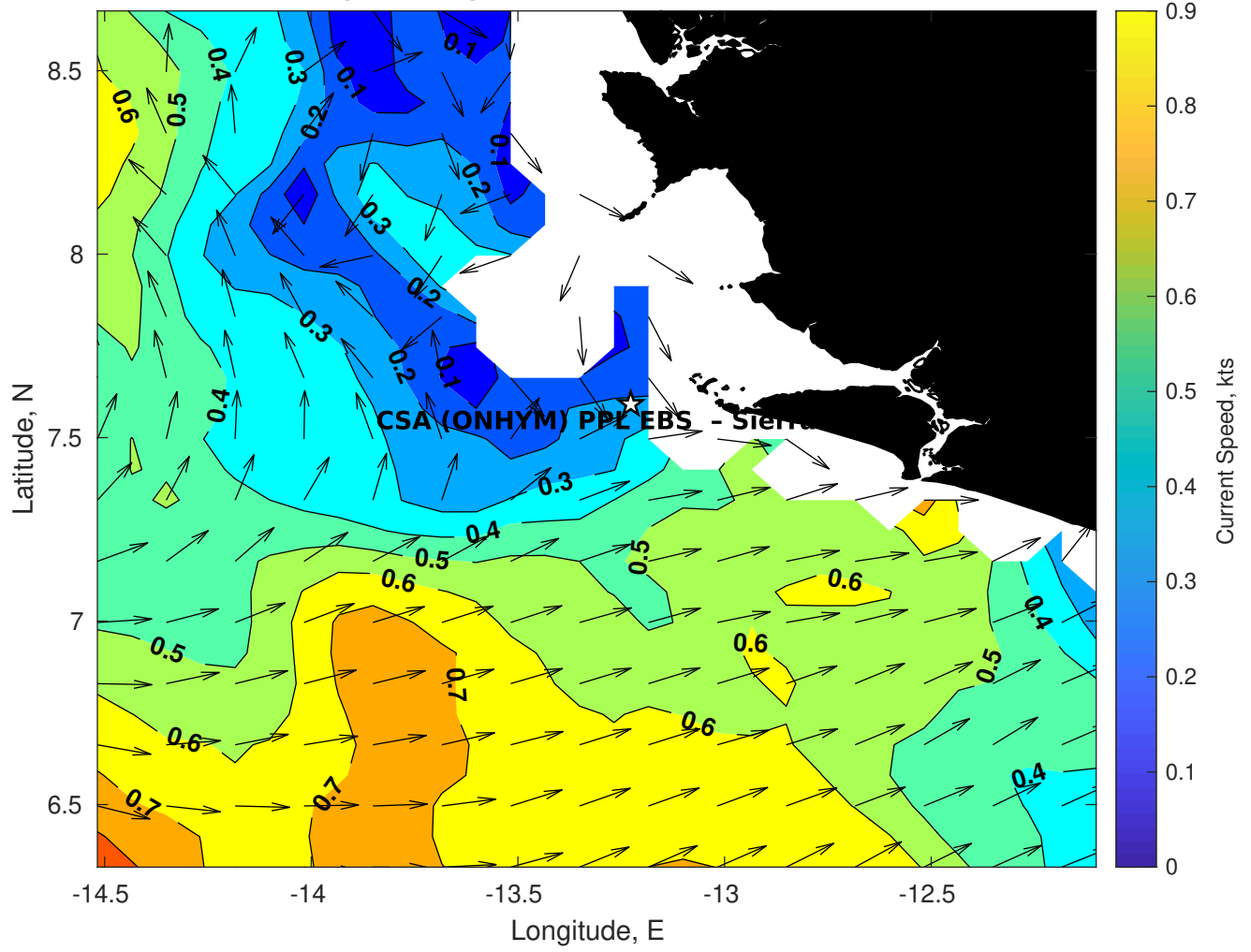
**GFS Wave Period (sec) for CSA (ONHYM) PPL EBS - Sierra Leone at 28-Nov-2025 09:00:00**



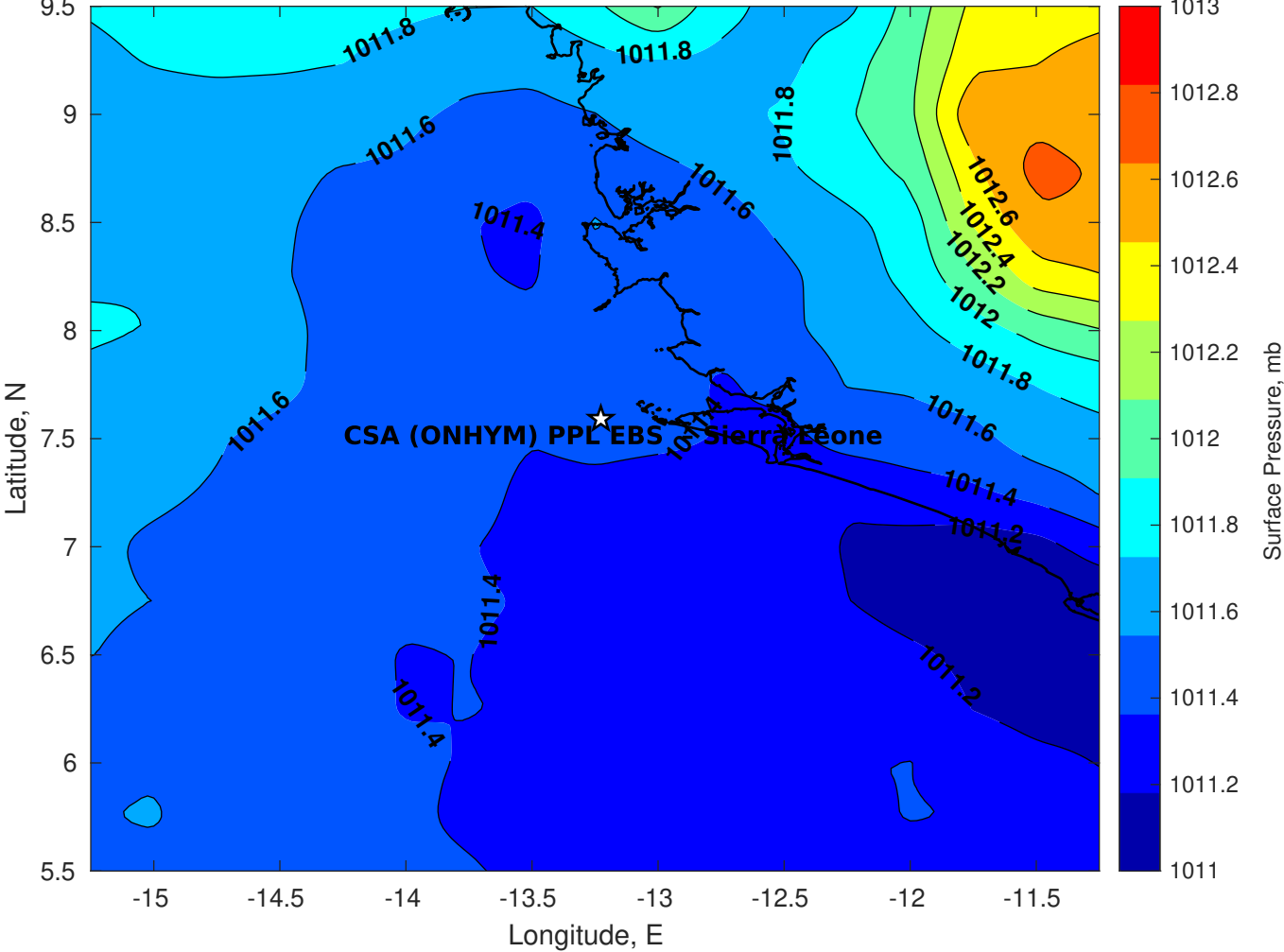
**GFS Winds (kts) for CSA (ONHYM) PPL EBS - Sierra Leone at 28-Nov-2025 09:00:00**



### Surface Currents for CSA (ONHYM) PPL EBS - Sierra Leone at 27-Nov-2025 00:00:00

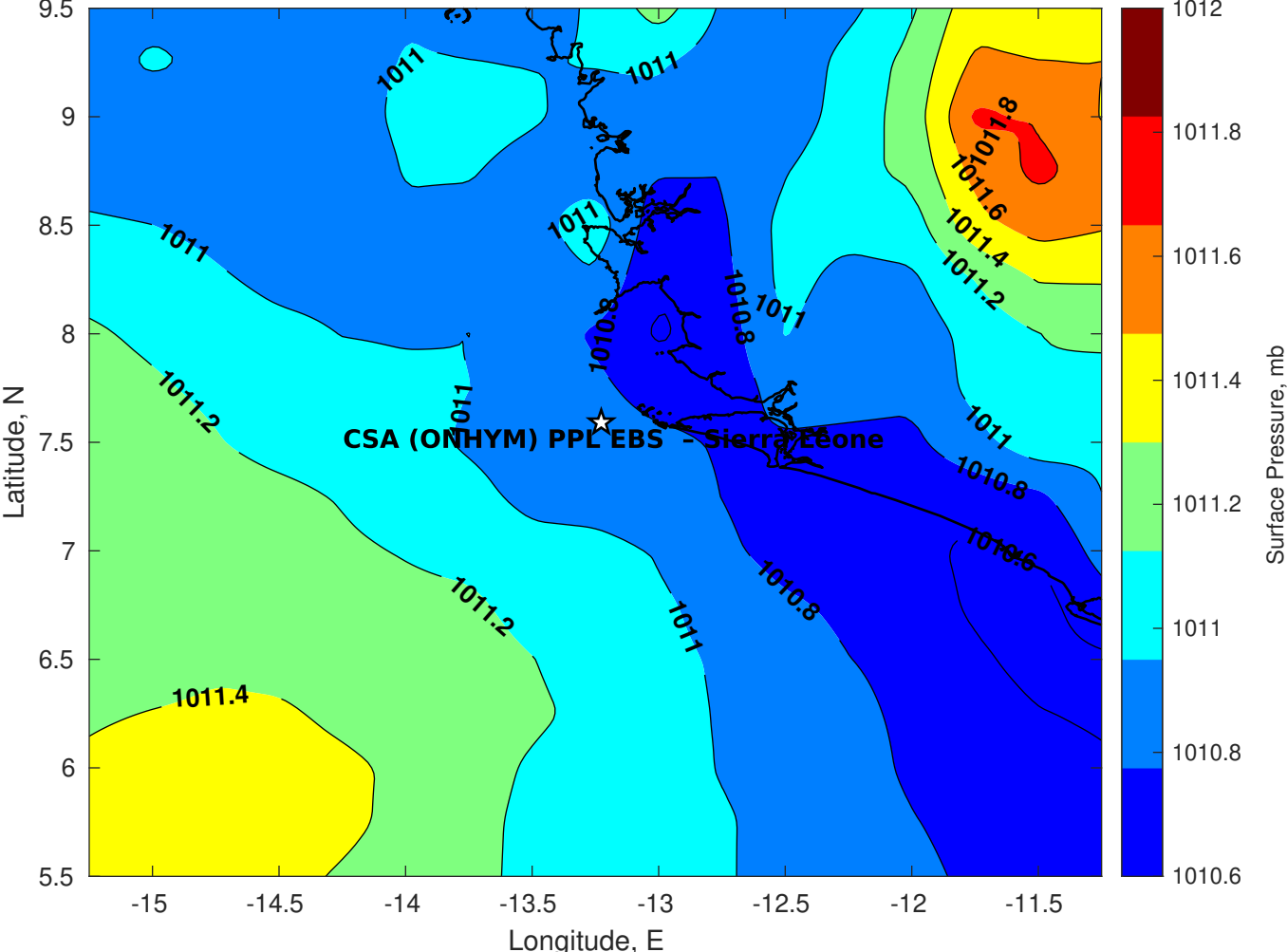


Surface Pressure (mb) for CSA (ONHYM) PPL EBS - Sierra Leone at 28-Nov-2025 00:00:00

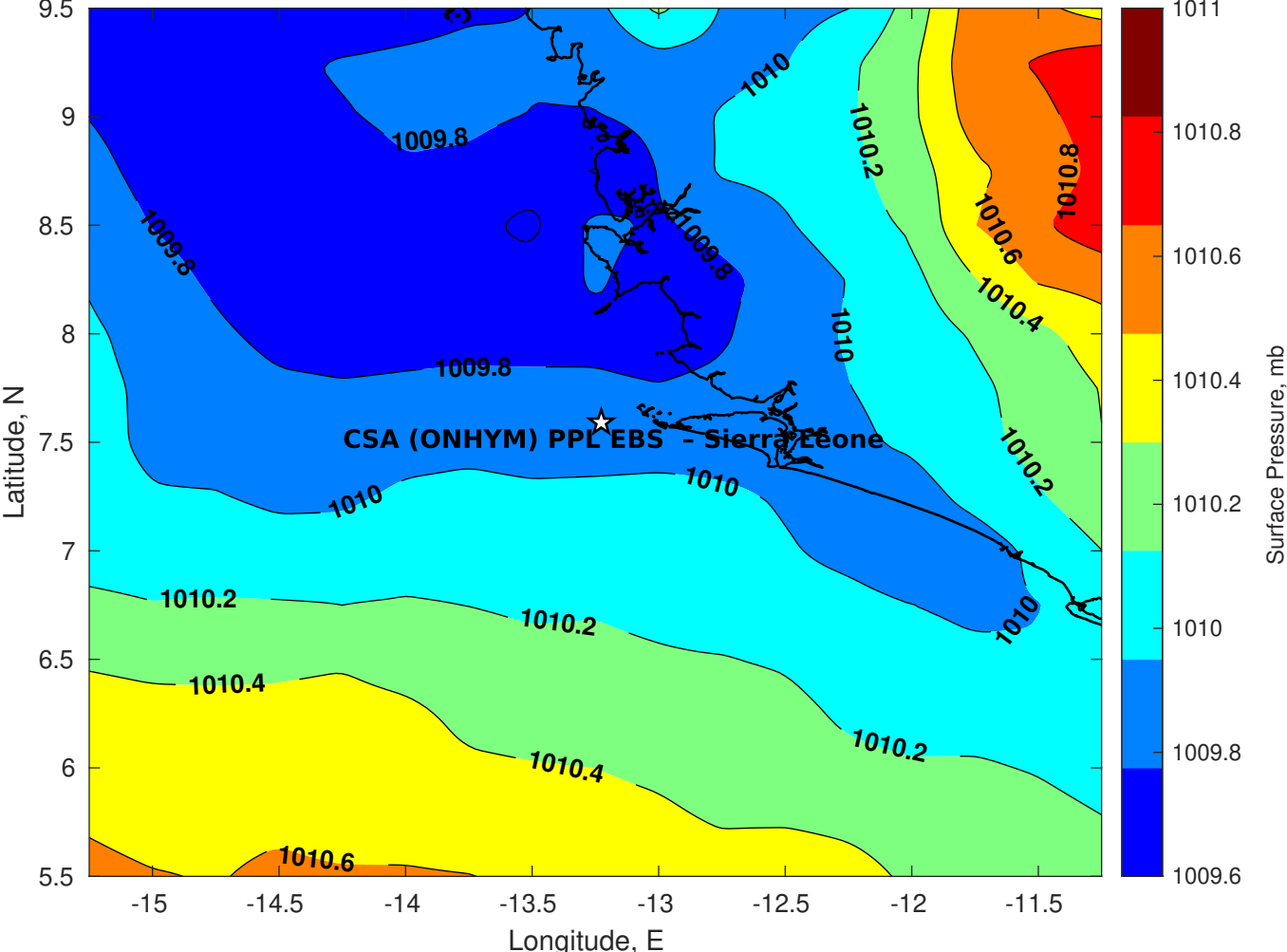




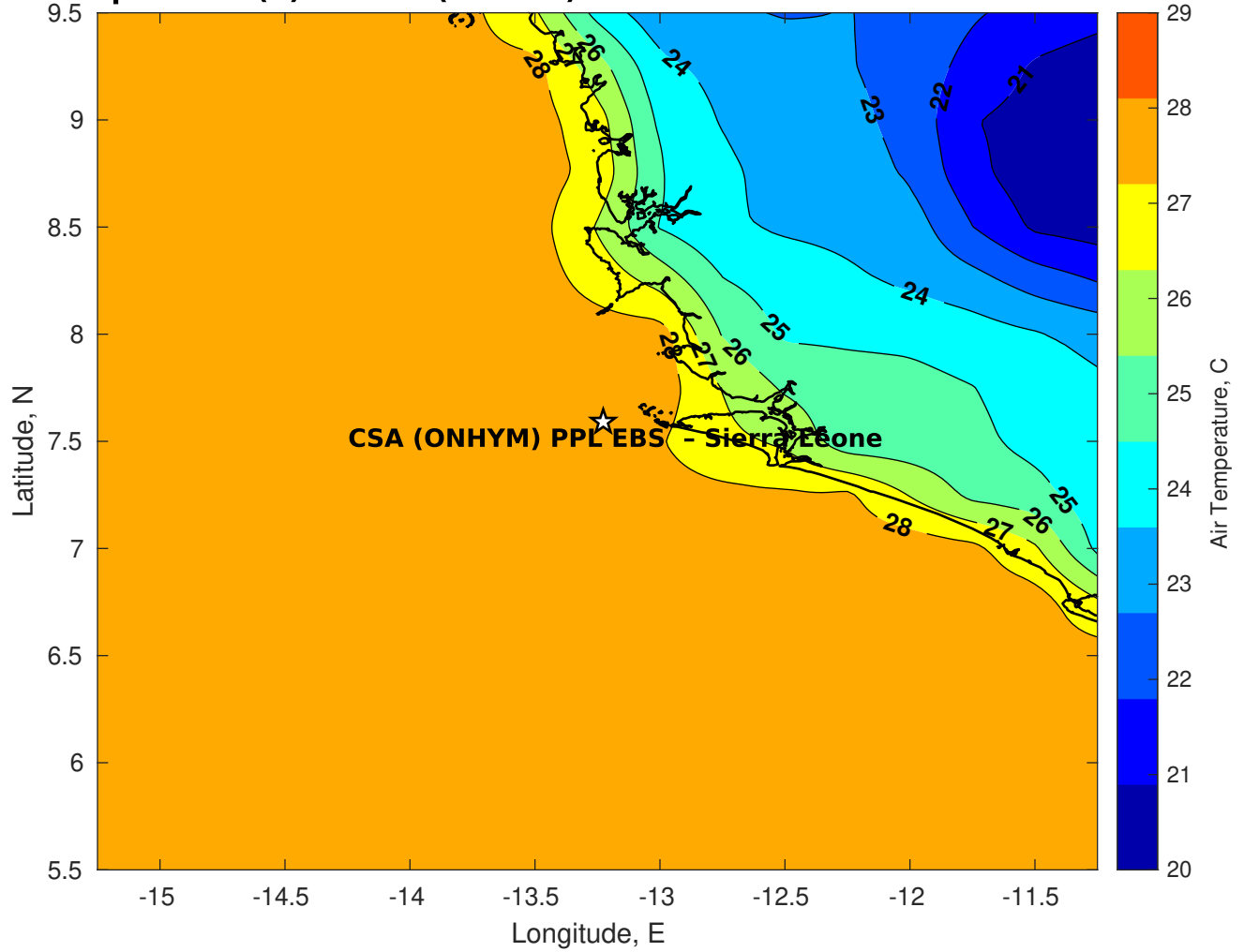
Surface Pressure (mb) for CSA (ONHYM) PPL EBS - Sierra Leone at 29-Nov-2025 00:00:00



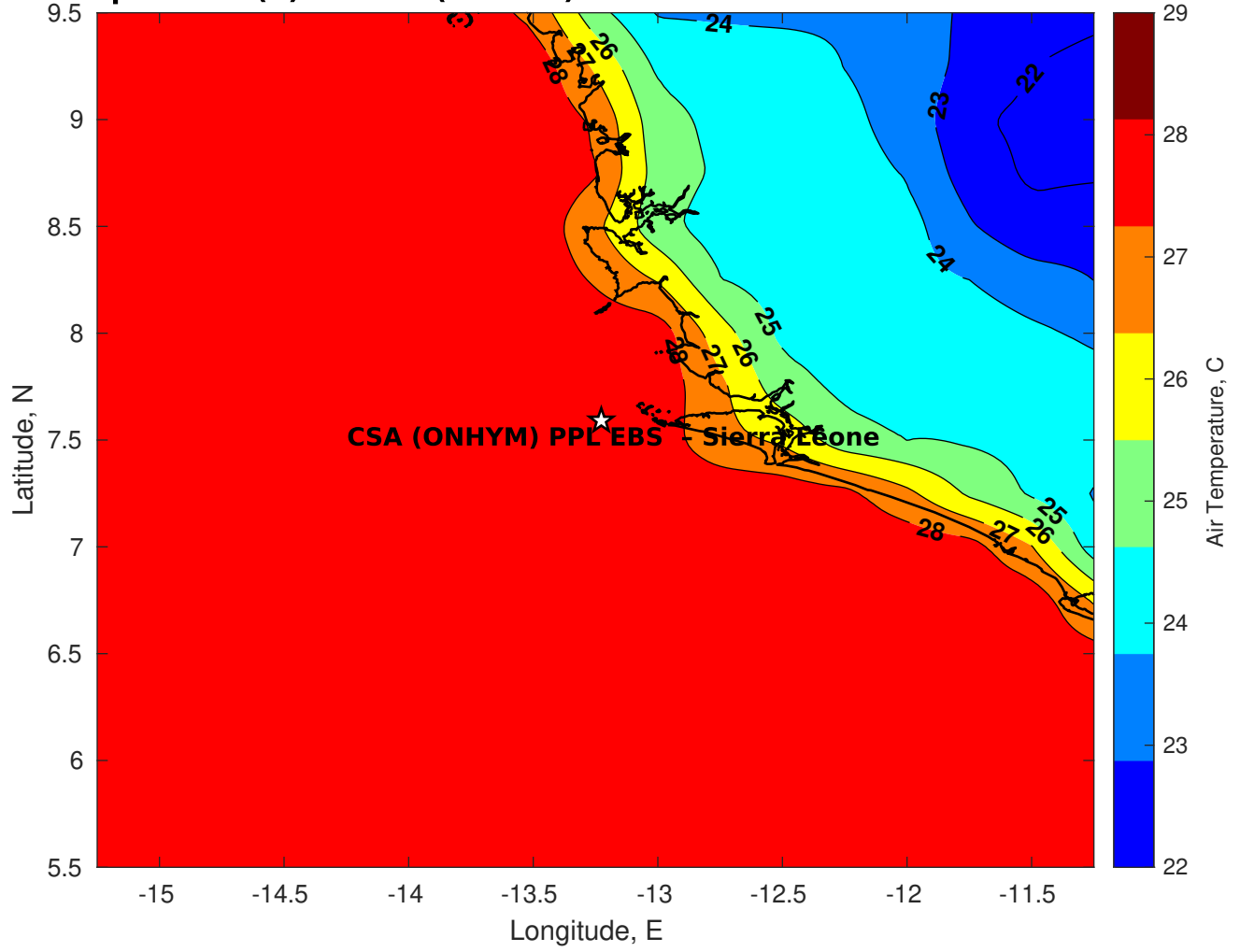
Surface Pressure (mb) for CSA (ONHYM) PPL EBS - Sierra Leone at 30-Nov-2025 00:00:00



**Air Temperature (C) for CSA (ONHYM) PPL EBS - Sierra Leone at 28-Nov-2025**



**Air Temperature (C) for CSA (ONHYM) PPL EBS - Sierra Leone at 28-Nov-2025**



**Air Temperature (C) for CSA (ONHYM) PPL EBS - Sierra Leone at 28-Nov-2025**

