
Marine Weather Forecast for CSA (ONHYM) PPL EBS - Guinea

Forecast valid as of 29-Nov-2025 0900 GMT

All times are local.

Today

Winds: NW, 5-10 kts.

Waves: NW, 0-1 feet, 10-11 sec.

No currents available.

Tonight

Winds: NE, less than 5 kts.

Waves: NW, 0-1 feet, 10-11 sec.

No currents available.

Sunday

Winds: NE, 5-10 kts.

Waves: NW, 0-1 feet, 10-11 sec.

No currents available.

Sunday Night

Winds: N, 5-10 kts.

Waves: NW, 0-1 feet, 10-11 sec.

No currents available.

Monday

Winds: NW, 5-10 kts.

Waves: NW, 0-1 feet, 10-11 sec.

No currents available.

Monday Night

Winds: N, 5-10 kts.

Waves: NW, 0-1 feet, 9-10 sec.

No currents available.

Tuesday

Winds: NE, 10-15 kts.

Waves: NE, 1-2 feet, 10-11 sec.

No currents available.

Tuesday Night

Winds: N, 10-15 kts.

Waves: N, 0-1 feet, 10-11 sec.

No currents available.

Wednesday

Winds: NE, 10-15 kts.

Waves: N, 0-1 feet, 9-10 sec.

No currents available.

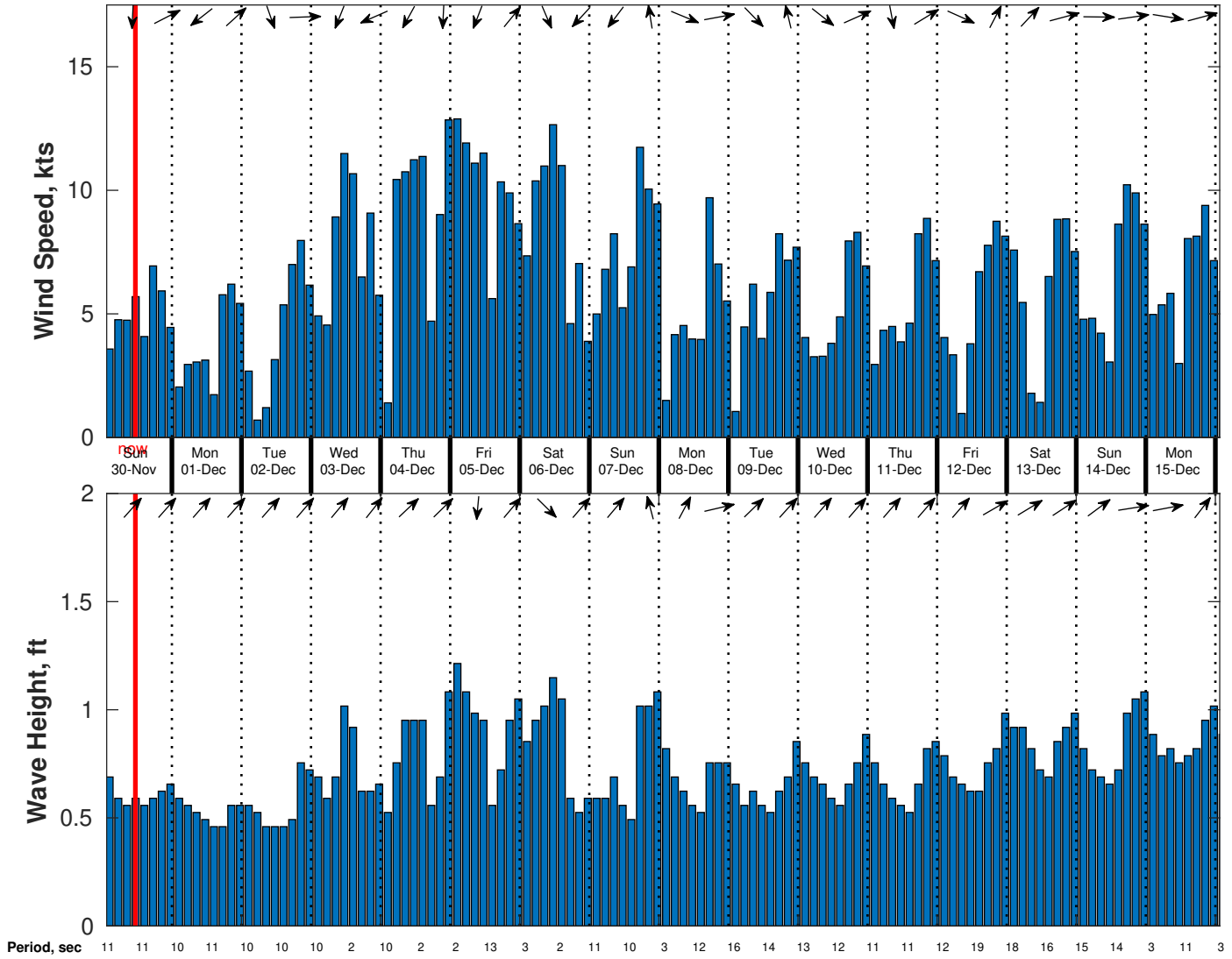
Wednesday Night

Winds: N, 10-15 kts.

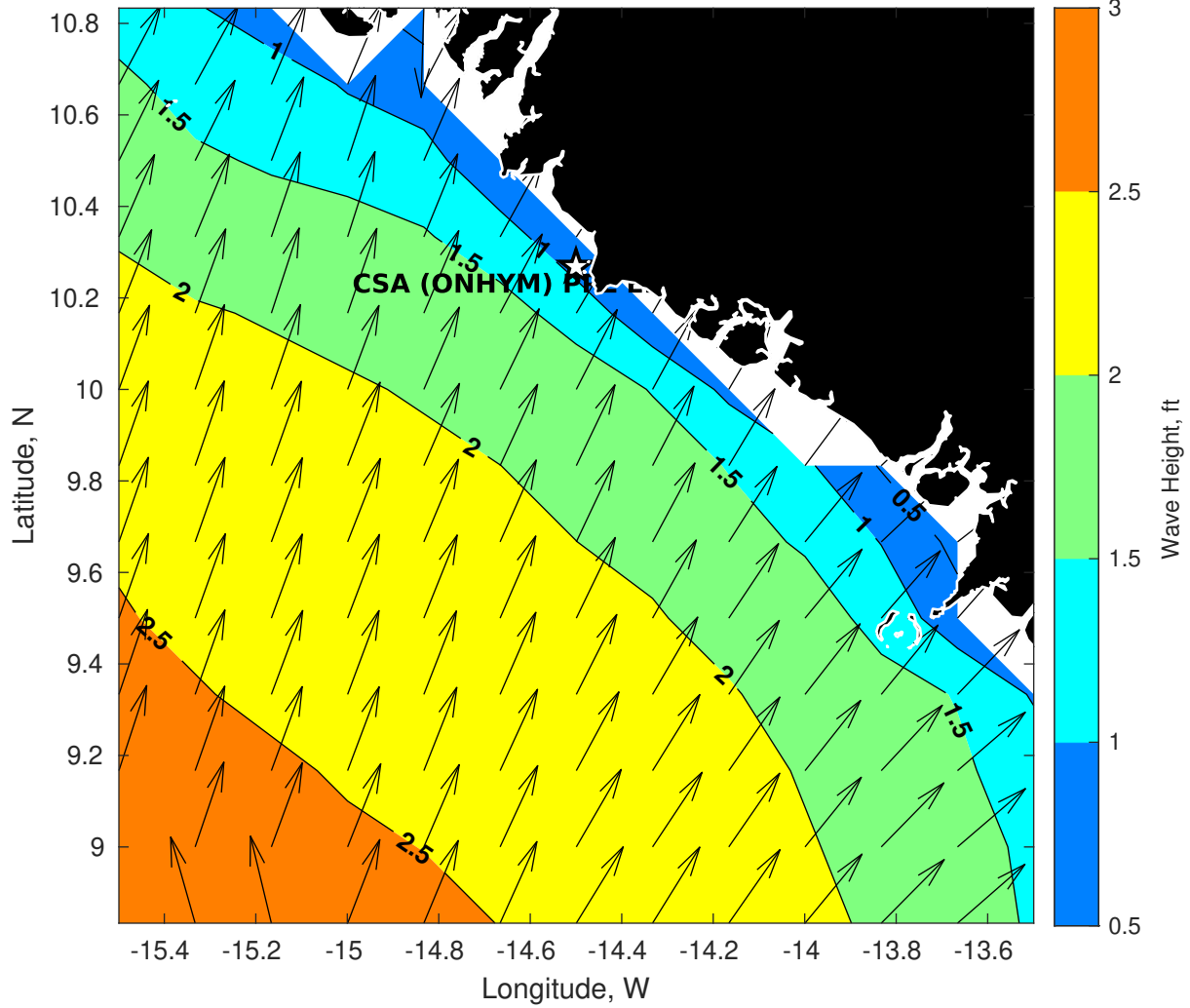
Waves: N, 1-2 feet, 2-3 sec.

No currents available.

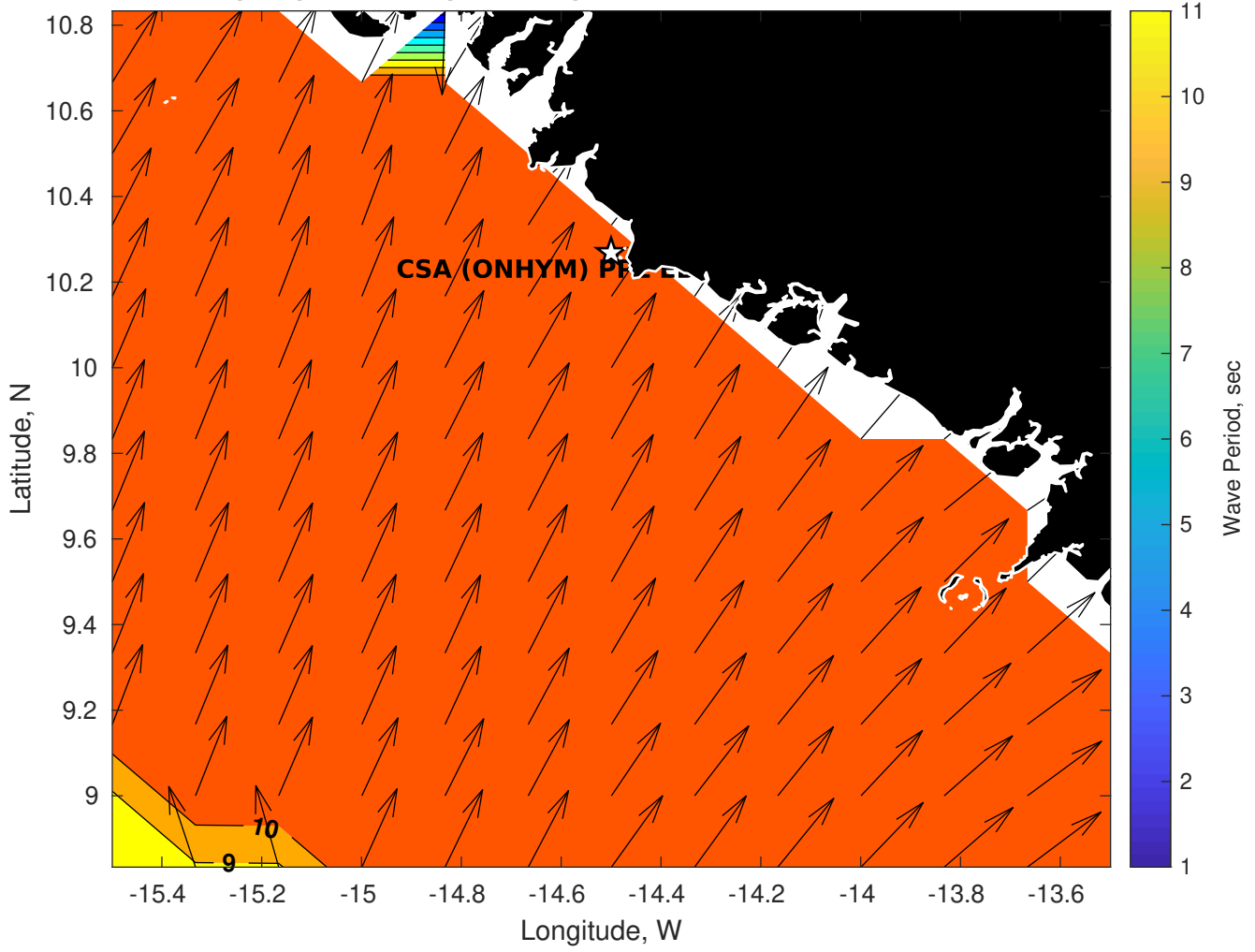
Wind & Wave Forecast for CSA (ONHYM) PPL EBS - Guinea from 29-Nov-2025 01:00:00 to 15-Dec-2025 01:00:00



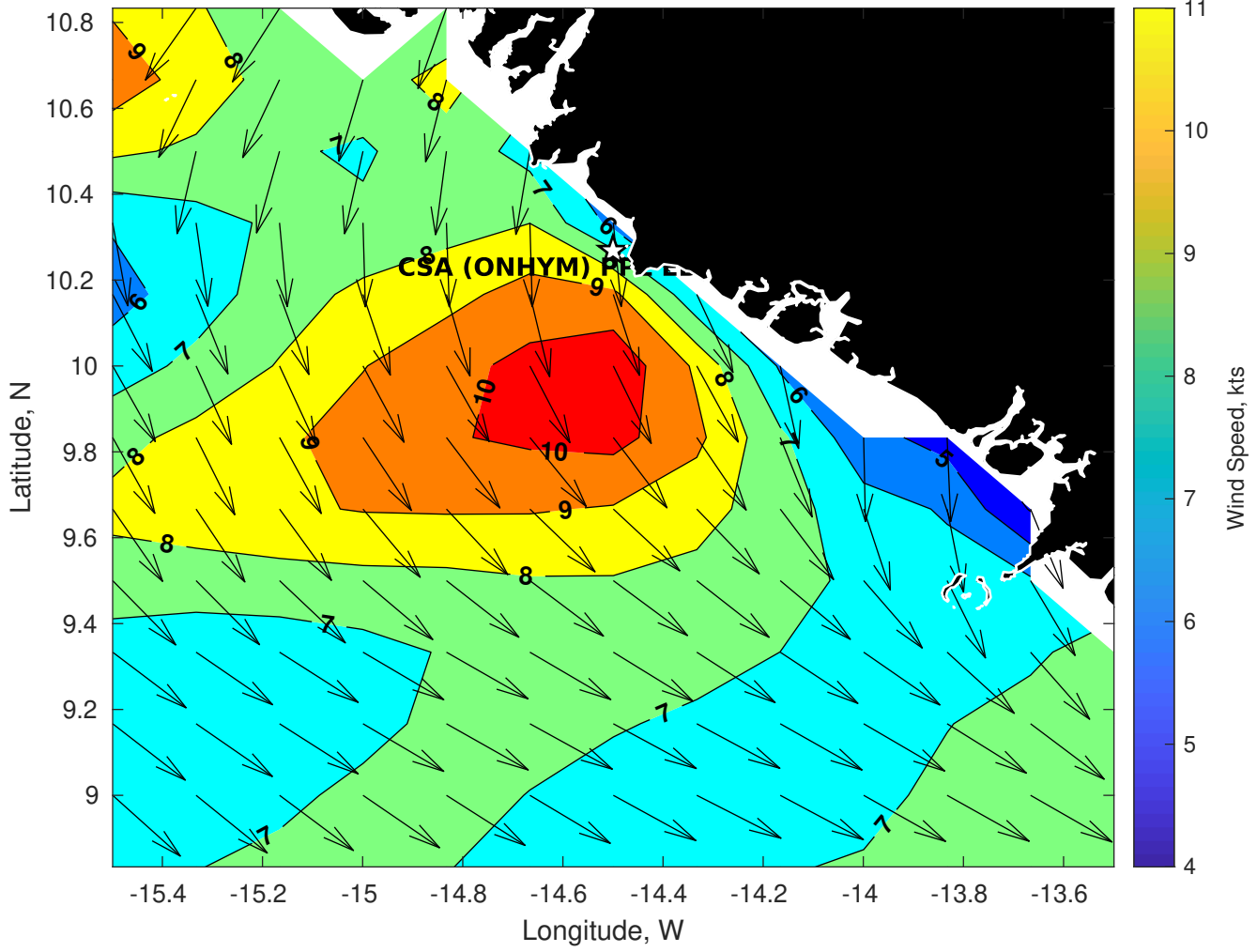
GFS Wave Height (ft) for CSA (ONHYM) PPL EBS - Guinea at 29-Nov-2025 09:00:00



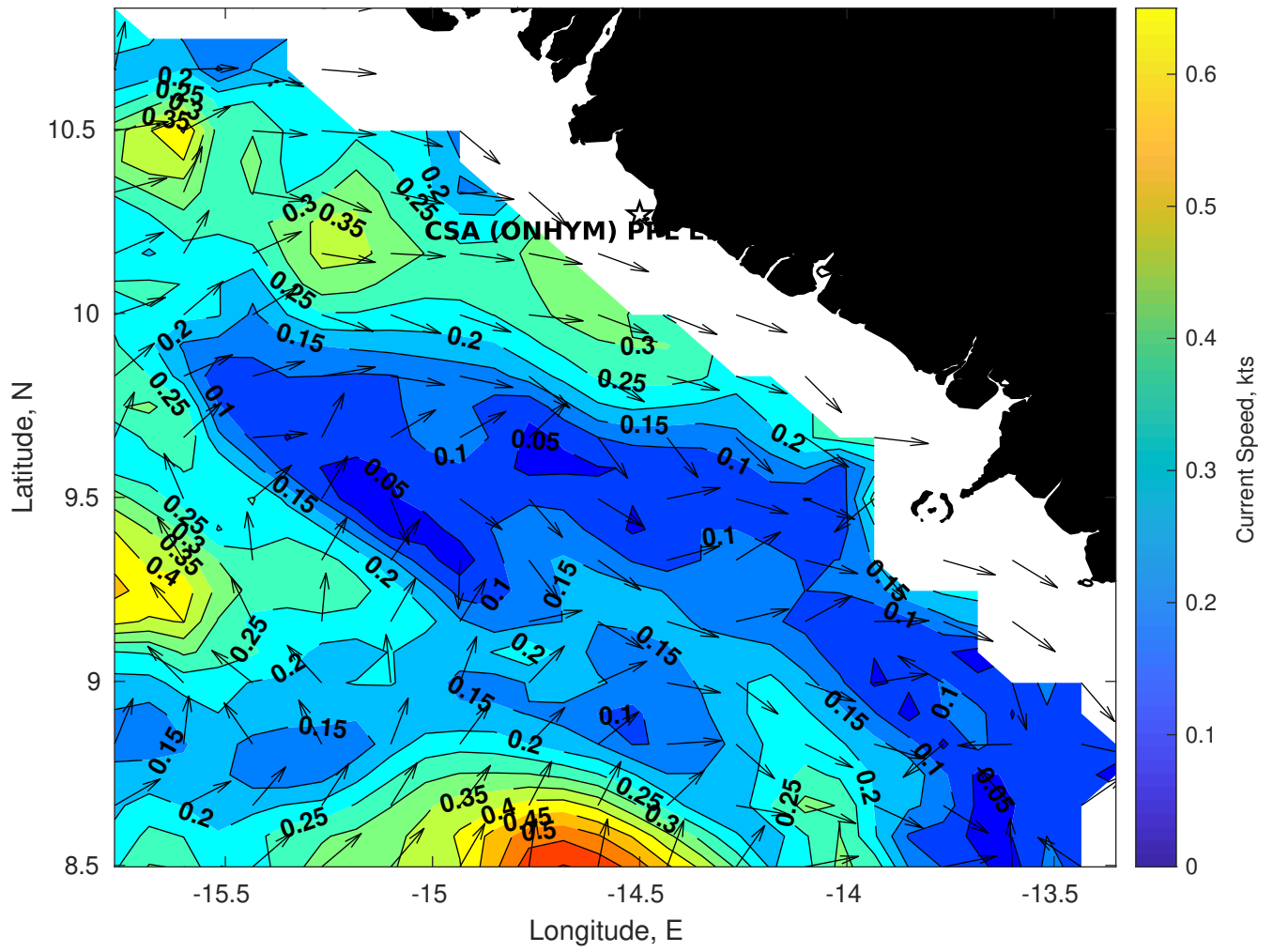
GFS Wave Period (sec) for CSA (ONHYM) PPL EBS - Guinea at 29-Nov-2025 09:00:00



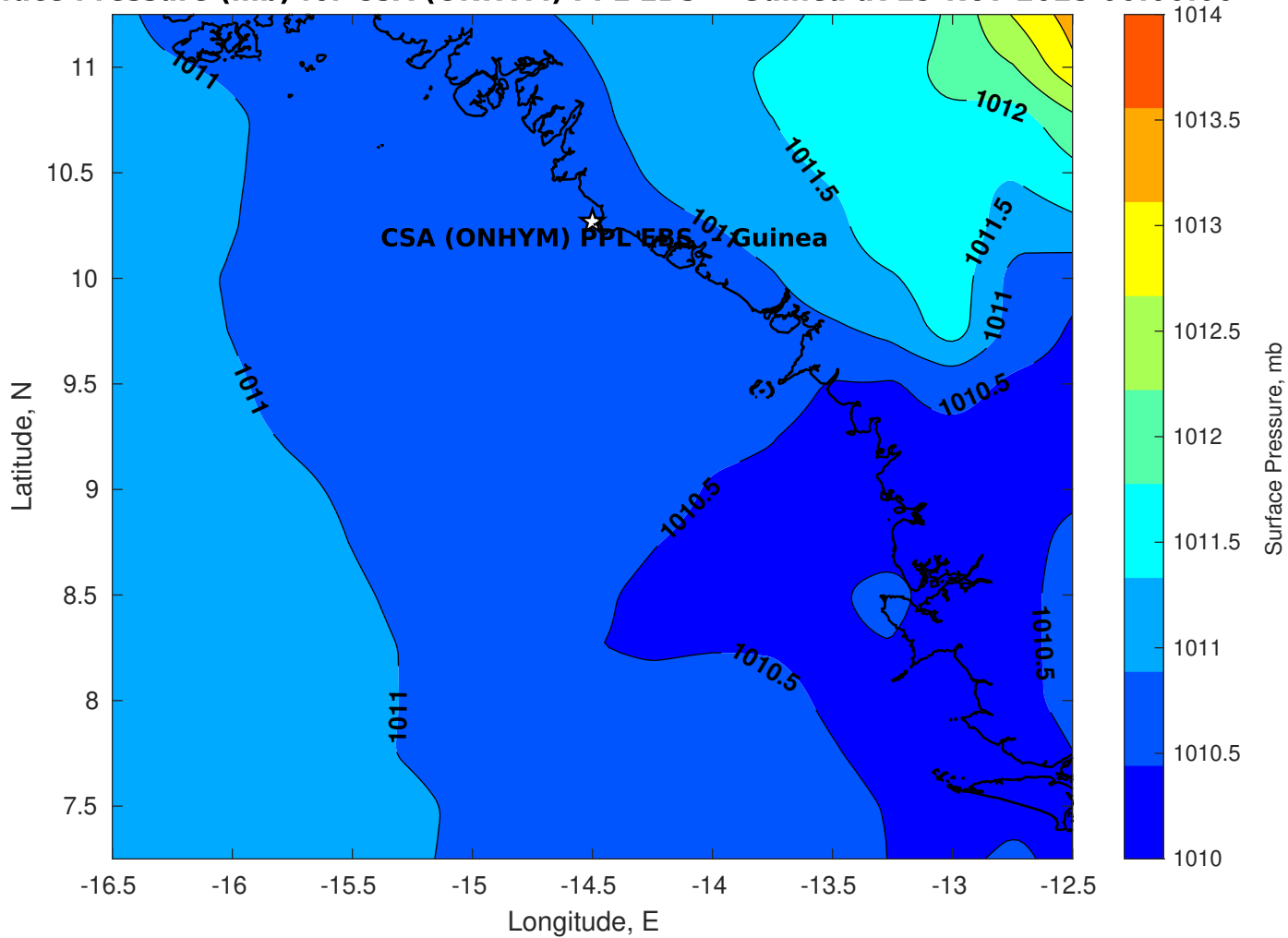
GFS Winds (kts) for CSA (ONHYM) PPL EBS - Guinea at 29-Nov-2025 09:00:00



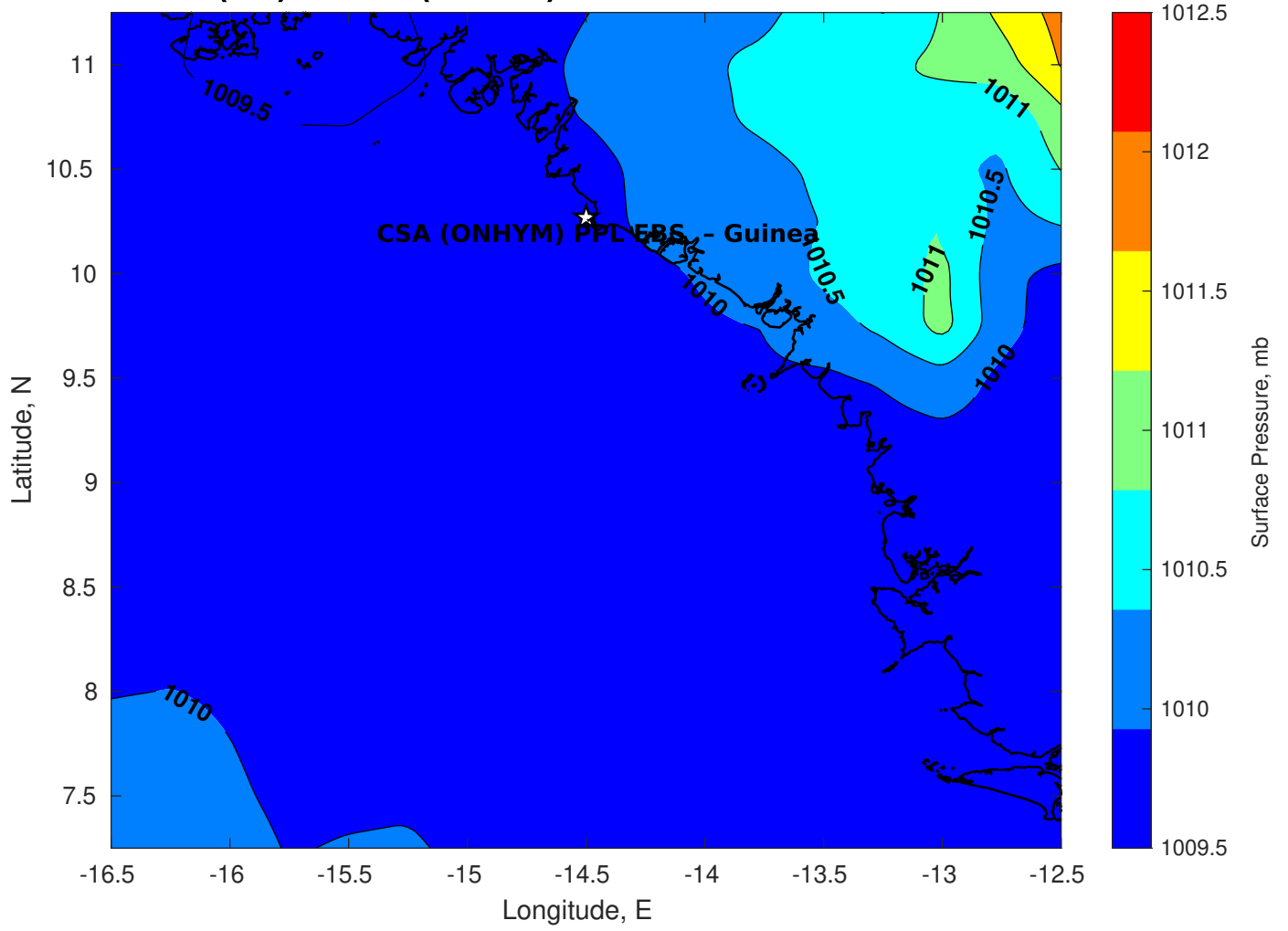
Surface Currents for CSA (ONHYM) PPL EBS - Guinea at 28-Nov-2025 00:00:00



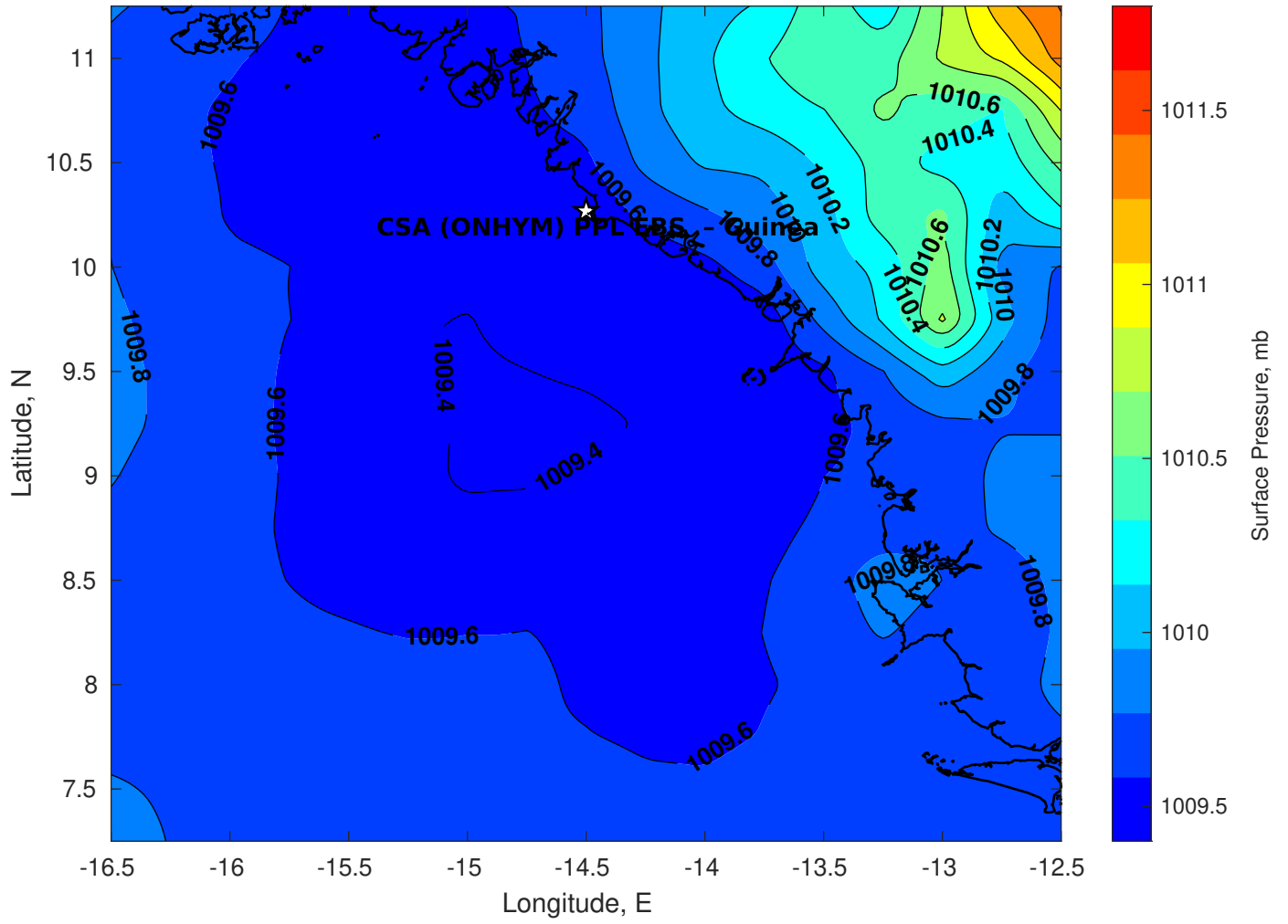
Surface Pressure (mb) for CSA (ONHYM) PPL EBS - Guinea at 29-Nov-2025 00:00:00



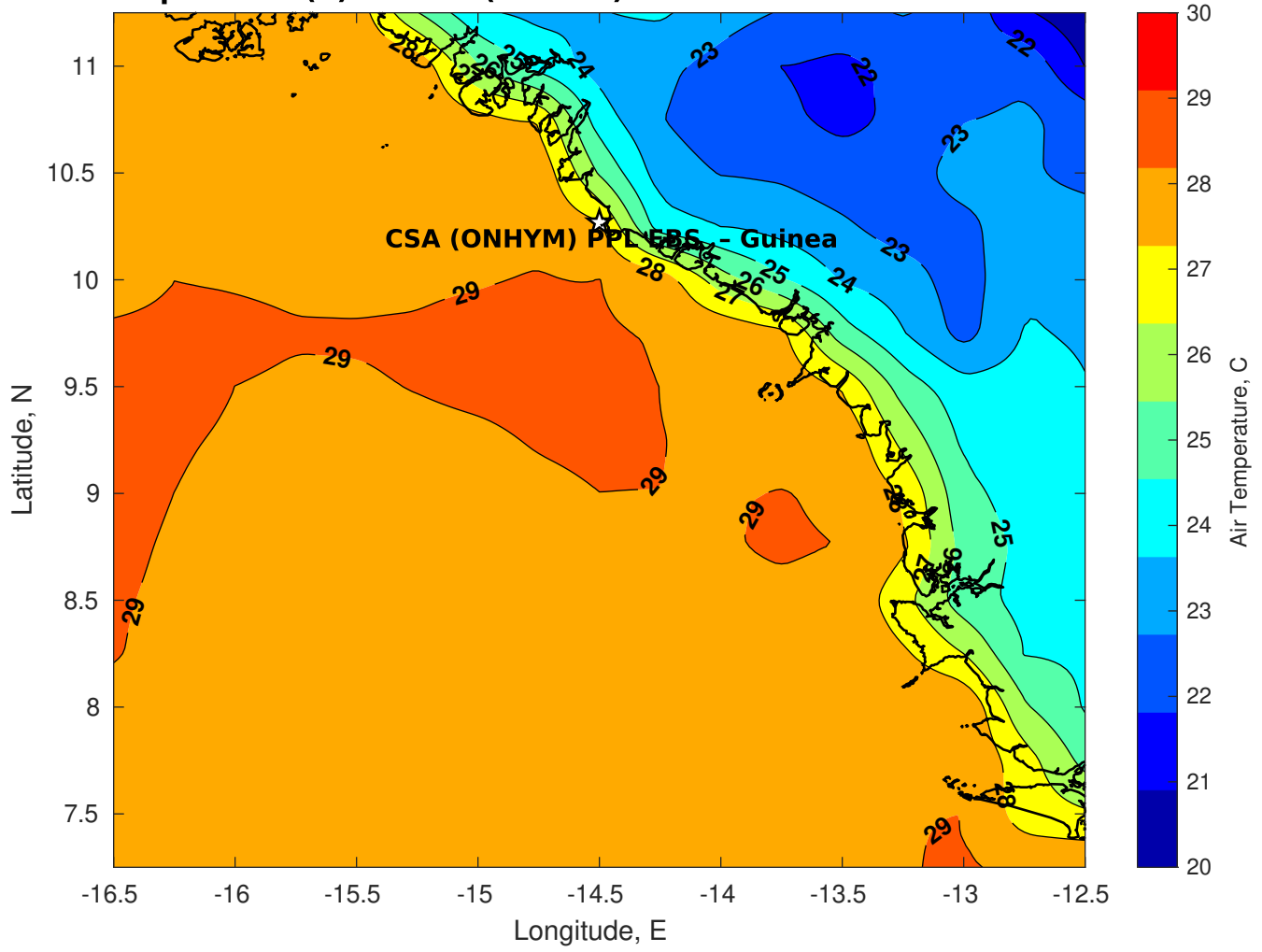
Surface Pressure (mb) for CSA (ONHYM) PPL EBS - Guinea at 30-Nov-2025 00:00:00



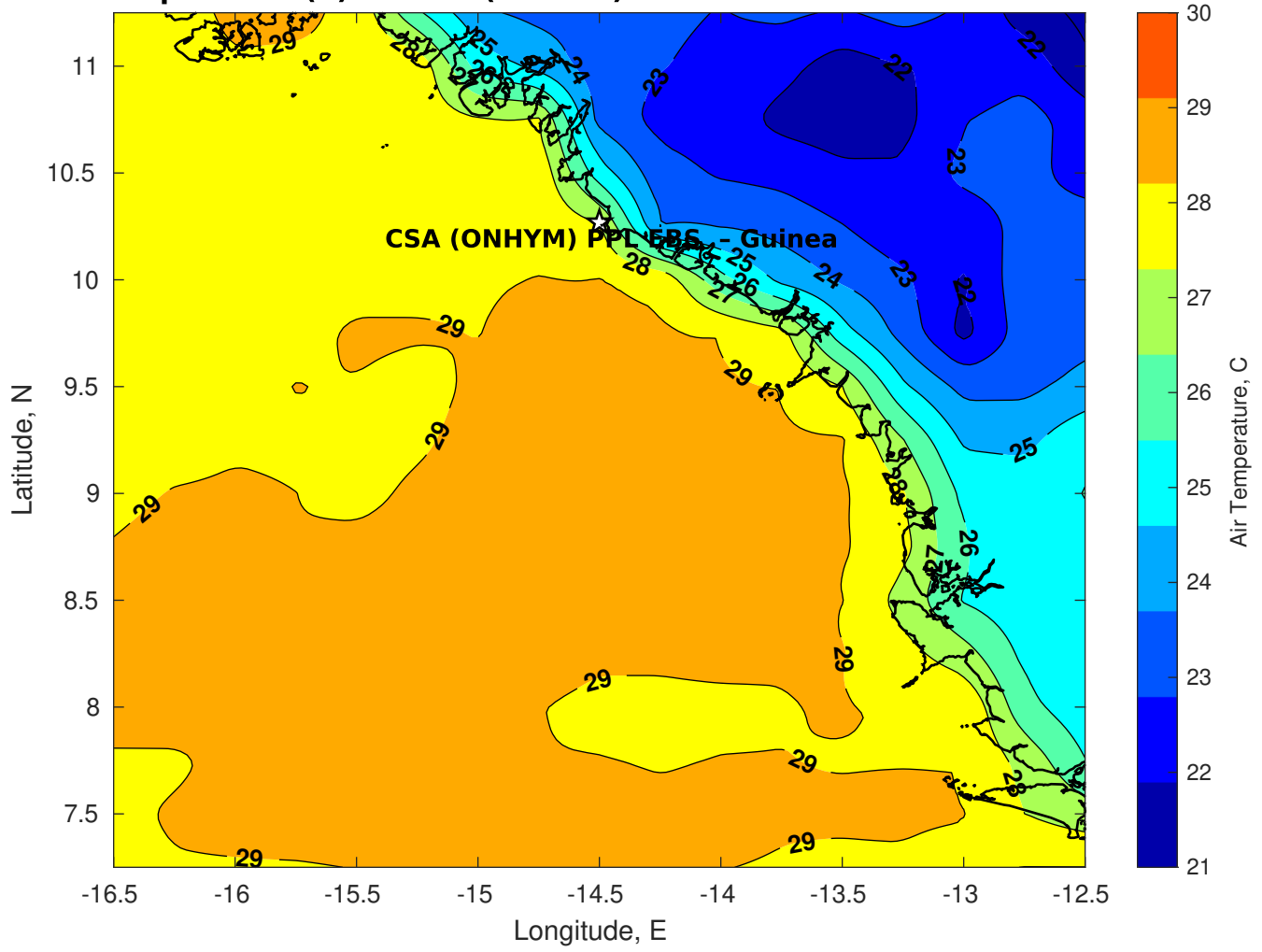
Surface Pressure (mb) for CSA (ONHYM) PPL EBS - Guinea at 01-Dec-2025 00:00:00



Air Temperature (C) for CSA (ONHYM) PPL EBS - Guinea at 29-Nov-2025



Air Temperature (C) for CSA (ONHYM) PPL EBS - Guinea at 29-Nov-2025



Air Temperature (C) for CSA (ONHYM) PPL EBS - Guinea at 29-Nov-2025

