
Marine Weather Forecast for Shell Noches GC19 PPL Geotechnical
Forecast valid as of 08-Aug-2025 0800 GMT

All times are local.

Today

Winds: E, 5-10 kts.
Waves: E, 0-1 feet, 4-5 sec.
No currents available.

Tonight

Winds: E, 10-15 kts.
Waves: E, 1-2 feet, 2-3 sec.
No currents available.

Saturday

Winds: E, 5-10 kts.
Waves: E, 1-2 feet, 4-5 sec.
No currents available.

Saturday Night

Winds: E, 5-10 kts.
Waves: E, 1-2 feet, 4-5 sec.
No currents available.

Sunday

Winds: E, less than 5 kts.
Waves: E, 0-1 feet, 4-5 sec.
No currents available.

Sunday Night

Winds: NE, 5-10 kts.
Waves: E, 0-1 feet, 4-5 sec.
No currents available.

Monday

Winds: E, 5-10 kts.
Waves: E, 0-1 feet, 5-6 sec.
No currents available.

Monday Night

Winds: NE, 5-10 kts.
Waves: E, 0-1 feet, 5-6 sec.
No currents available.

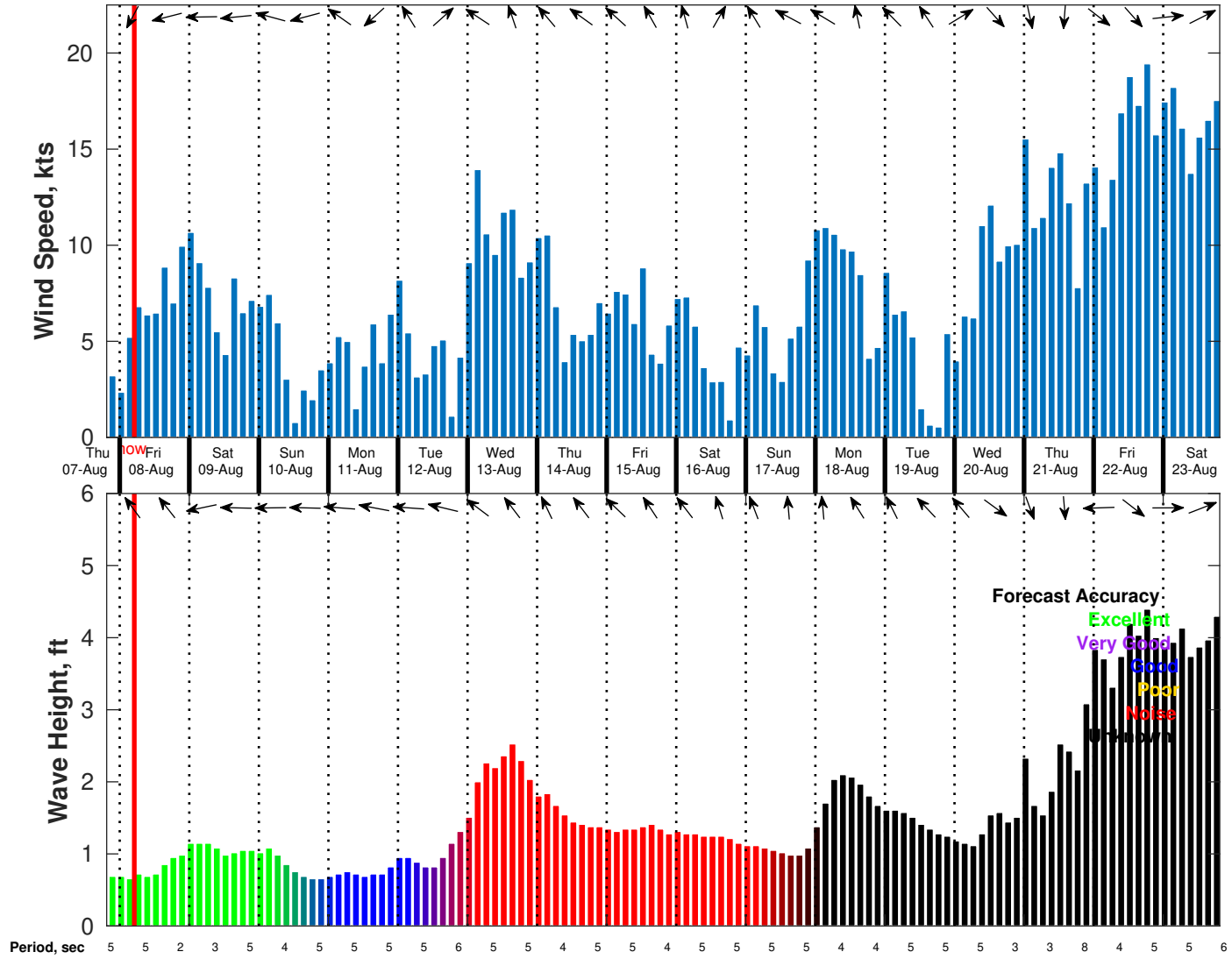
Tuesday

Winds: E, 5-10 kts.
Waves: E, 1-2 feet, 5-6 sec.
No currents available.

Tuesday Night

Winds: NE, 10-15 kts.
Waves: NE, 2-3 feet, 5-6 sec.
No currents available.

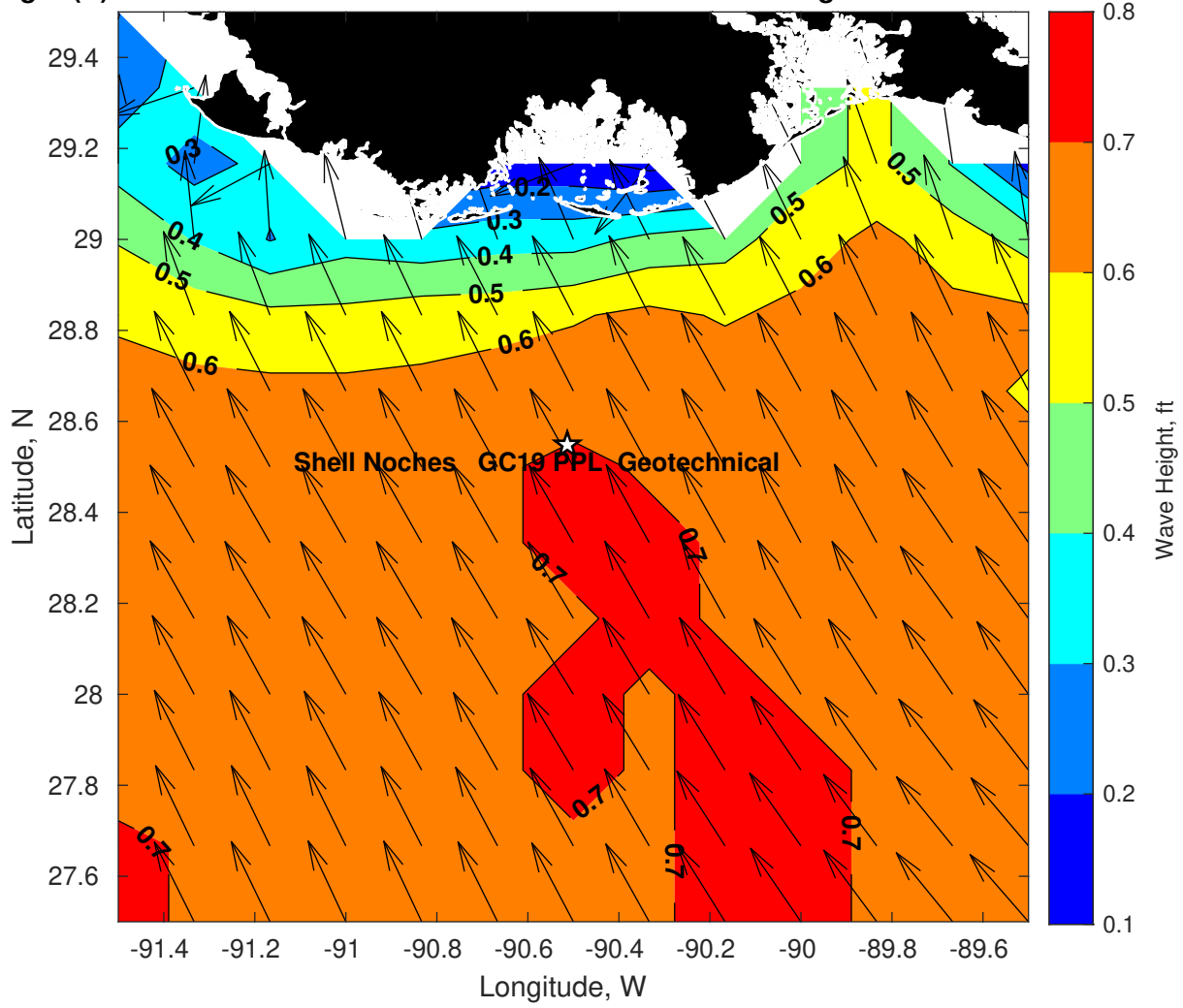
Wind & Wave Forecast for Shell Noches GC19 PPL Geotechnical from 07-Aug-2025 20:00:00 to 23-Aug-2025 20:00:00



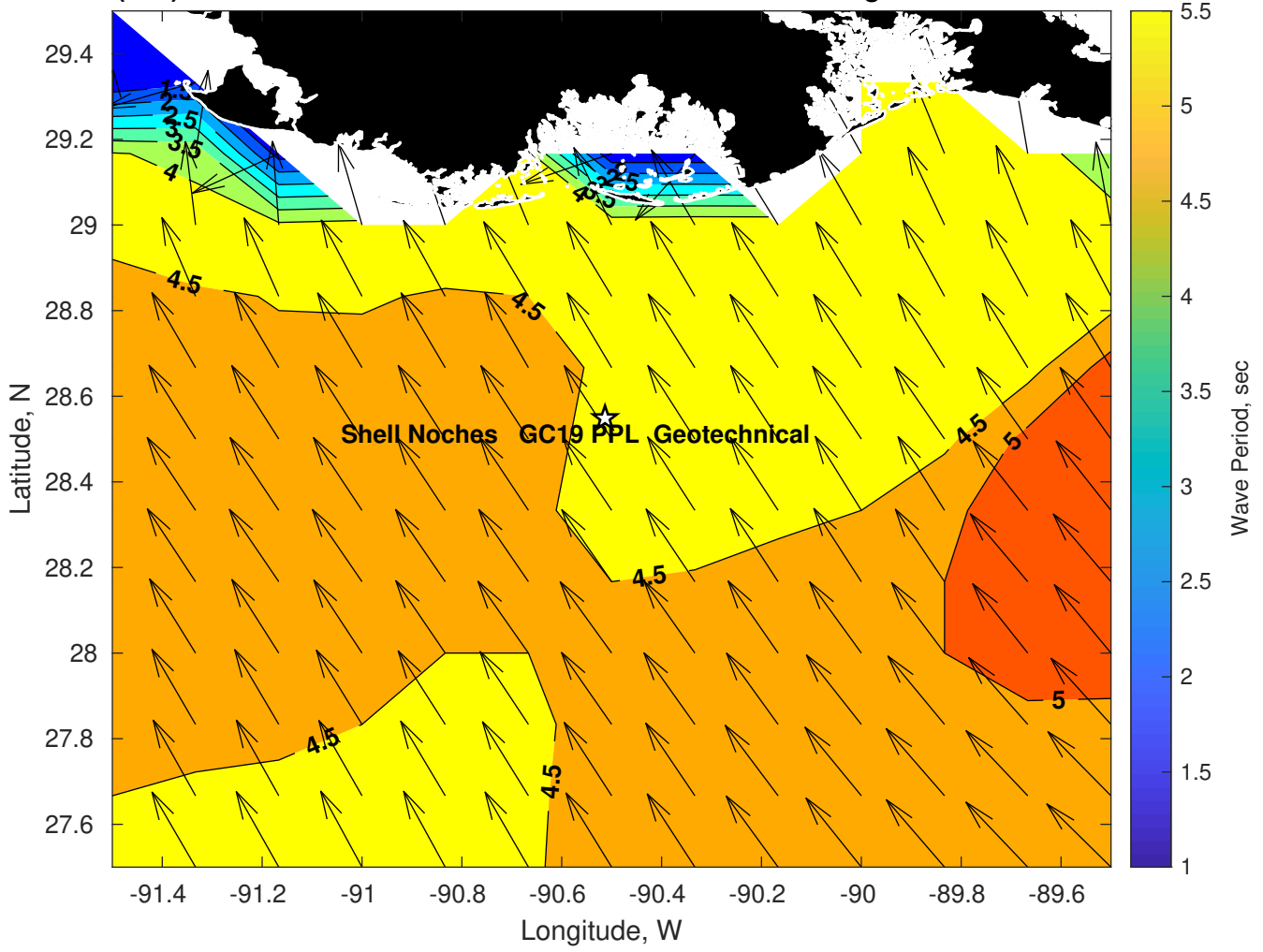
Met Forecast for Shell Noches GC19 PPL Geotechnical from 08-Aug-2025 00:00:00 to 15-Aug-2025 00:00:00



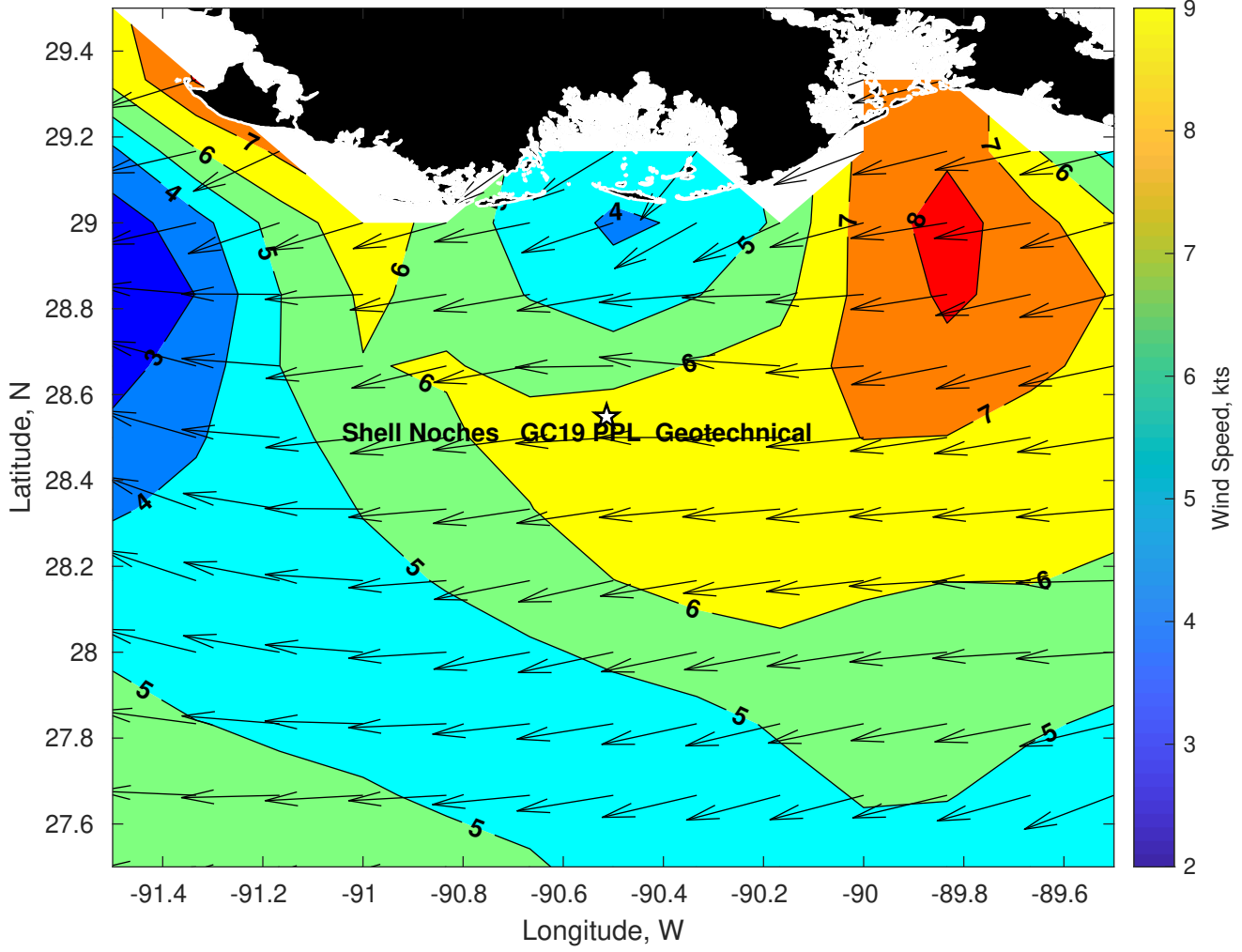
Wave Height (ft) for Shell Noches GC19 PPL Geotechnical at 08-Aug-2025 09:00:00



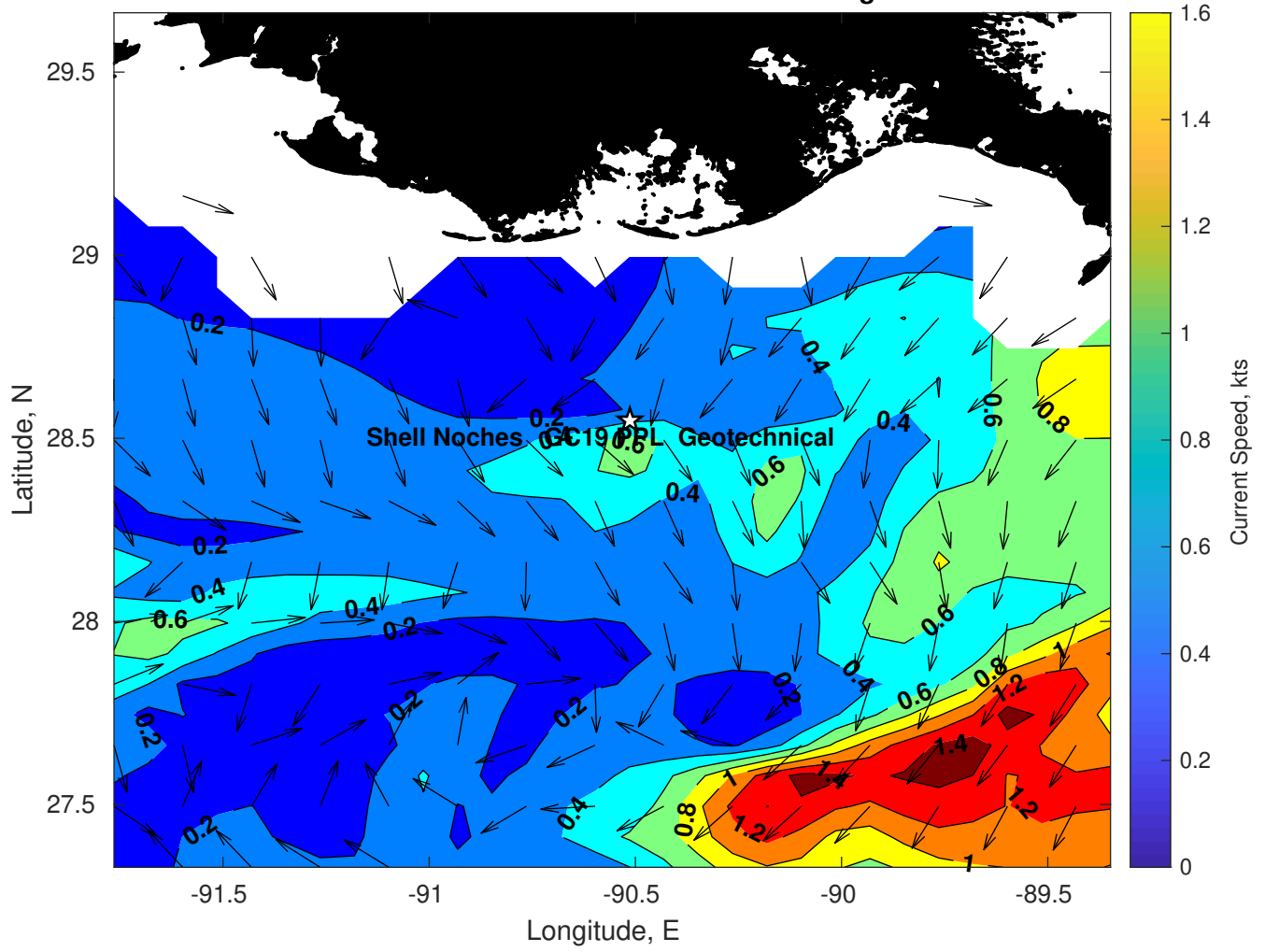
Wave Period (sec) for Shell Noches GC19 PPL Geotechnical at 08-Aug-2025 09:00:00



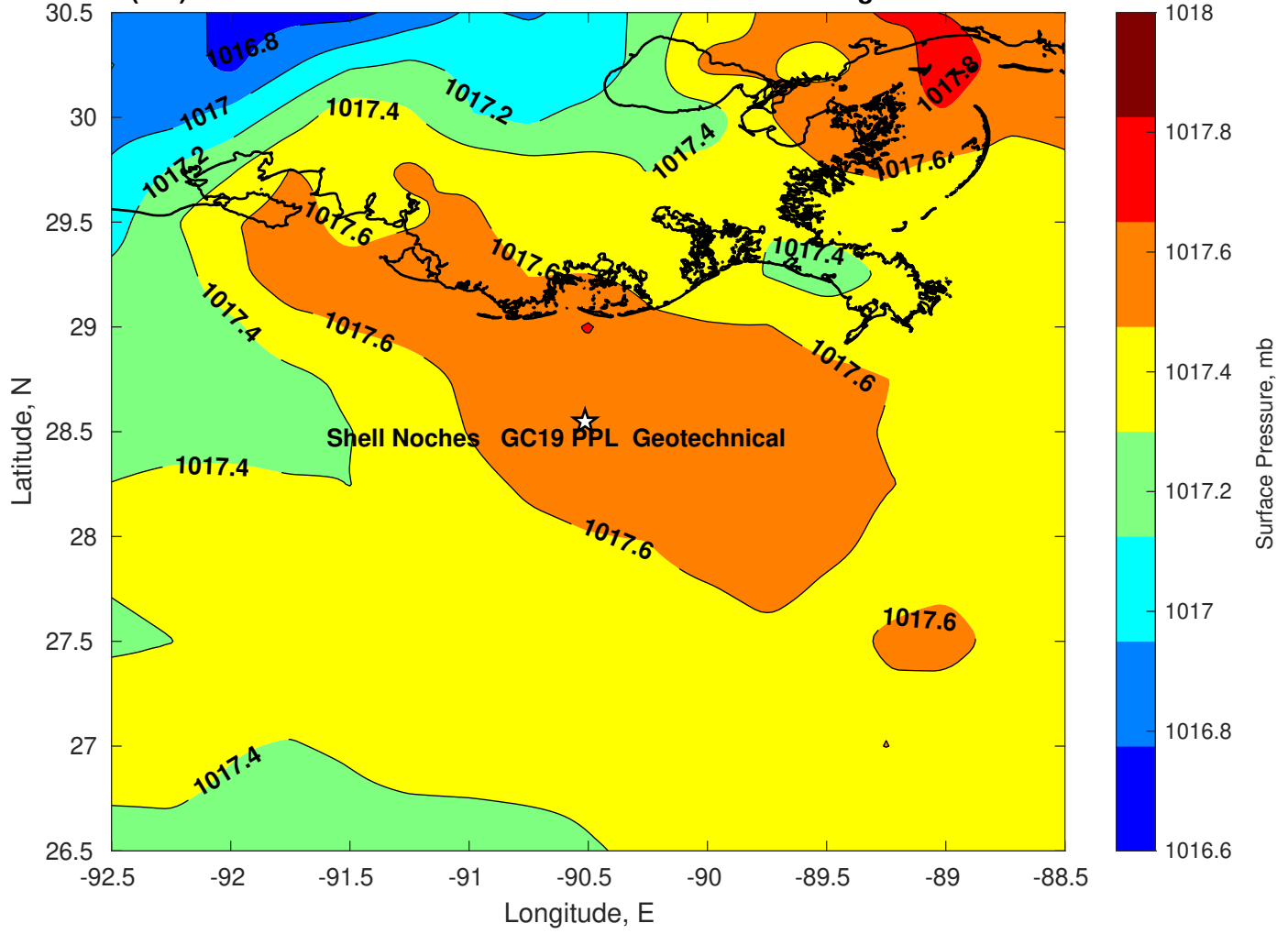
Winds (kts) for Shell Noches GC19 PPL Geotechnical at 08-Aug-2025 09:00:00



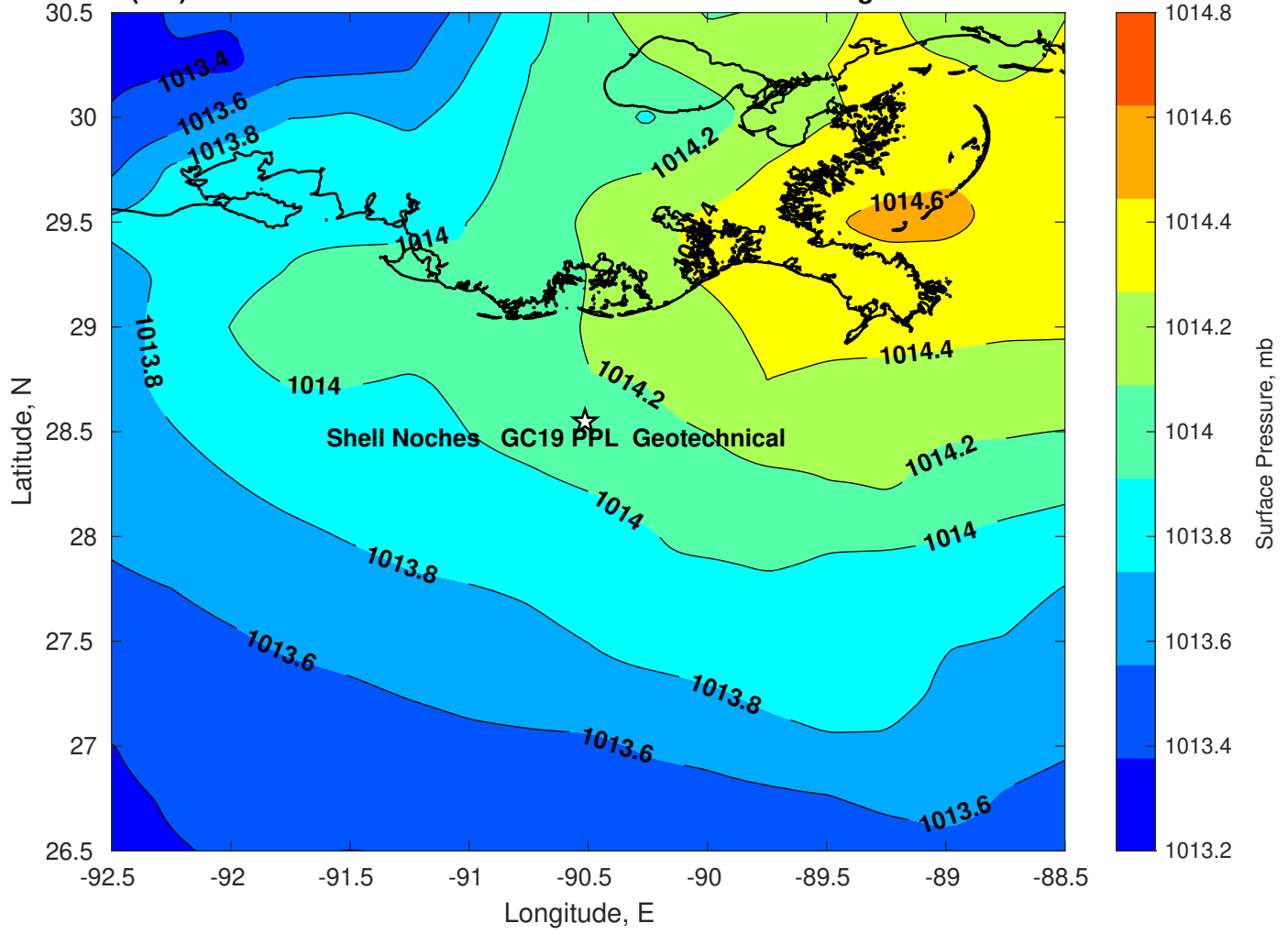
Surface Currents for Shell Noches GC19 PPL Geotechnical at 07-Aug-2025 00:00:00



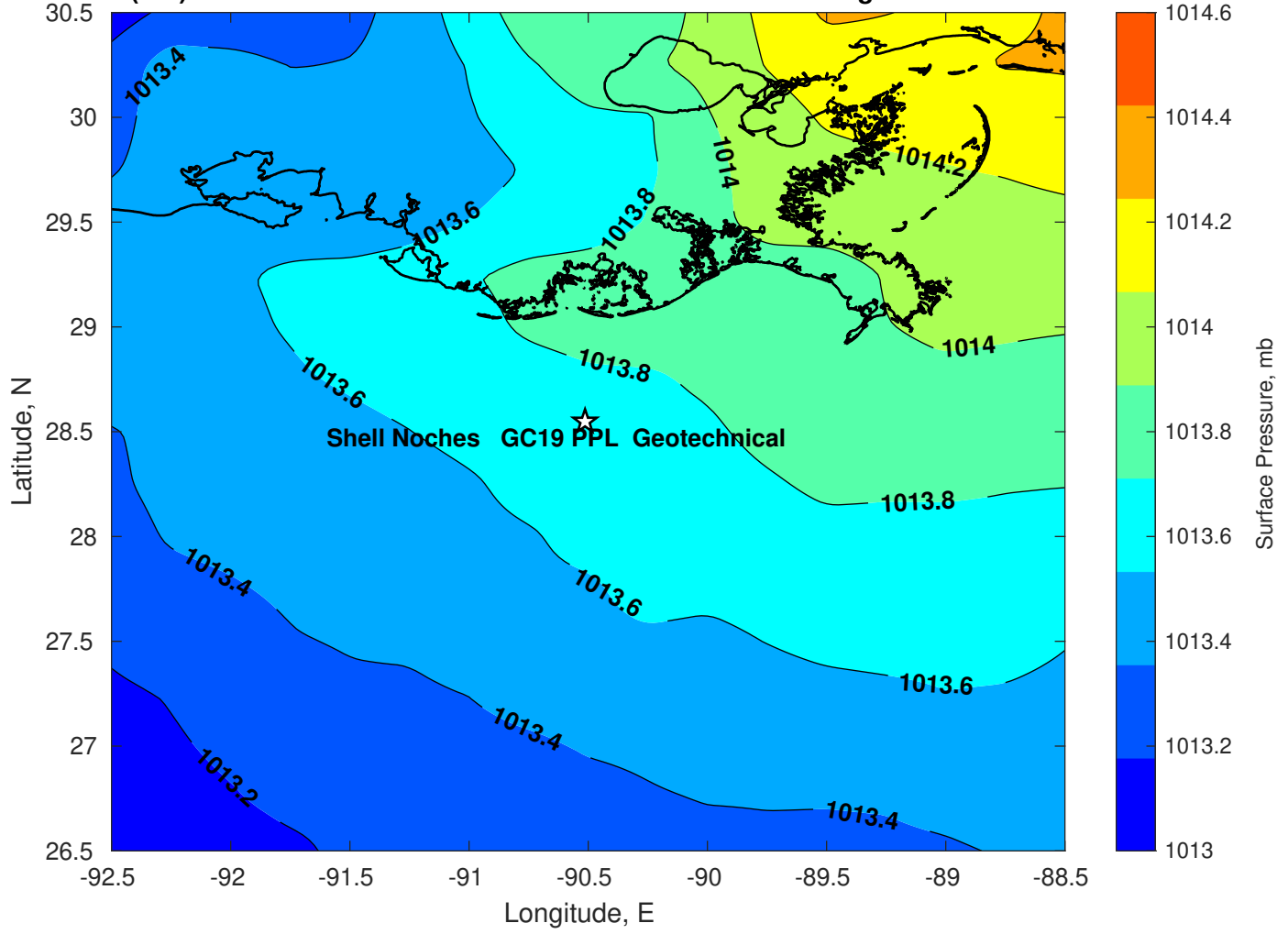
Surface Pressure (mb) for Shell Noches GC19 PPL Geotechnical at 08-Aug-2025 00:00:00



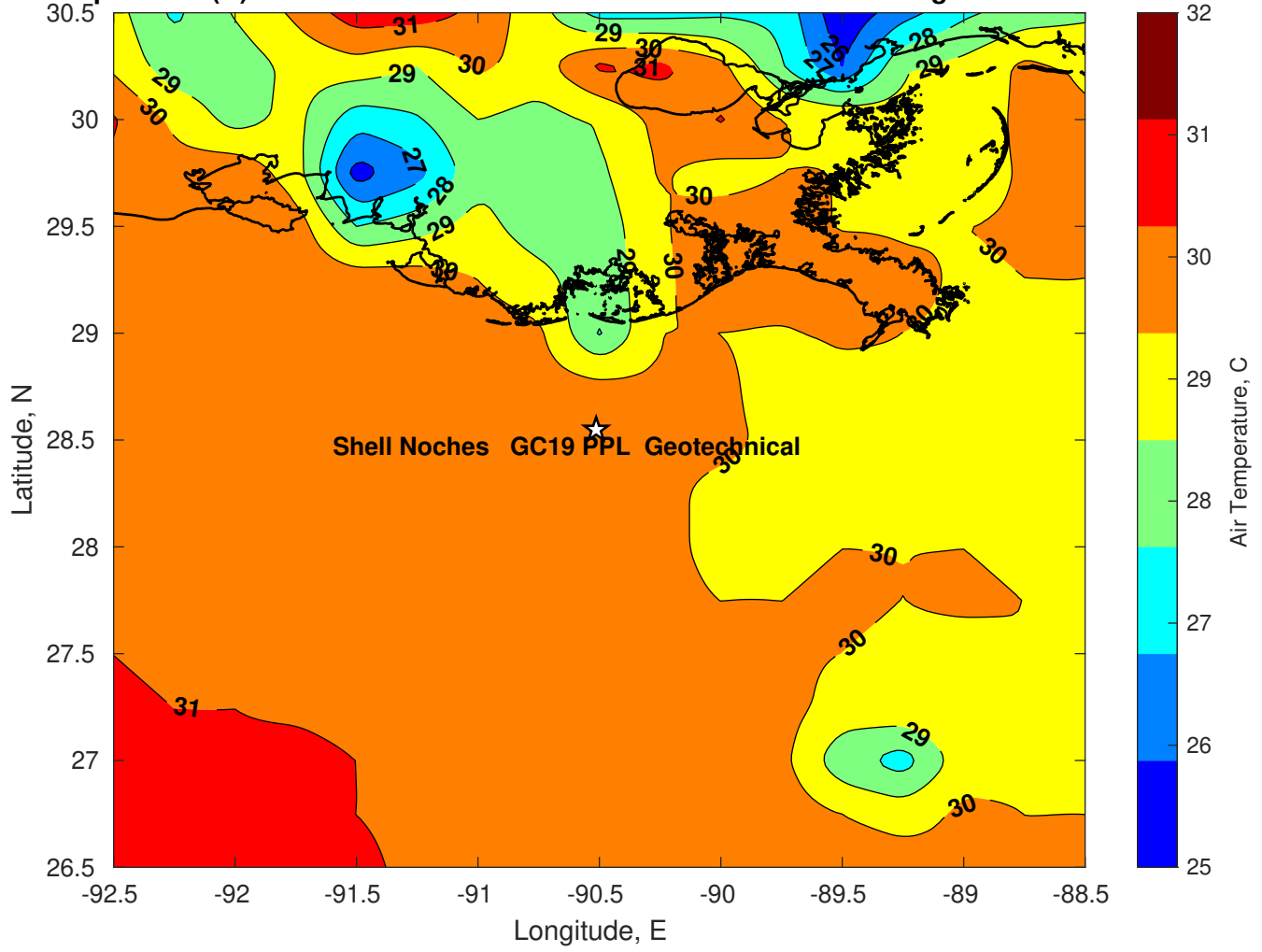
Surface Pressure (mb) for Shell Noches GC19 PPL Geotechnical at 09-Aug-2025 00:00:00



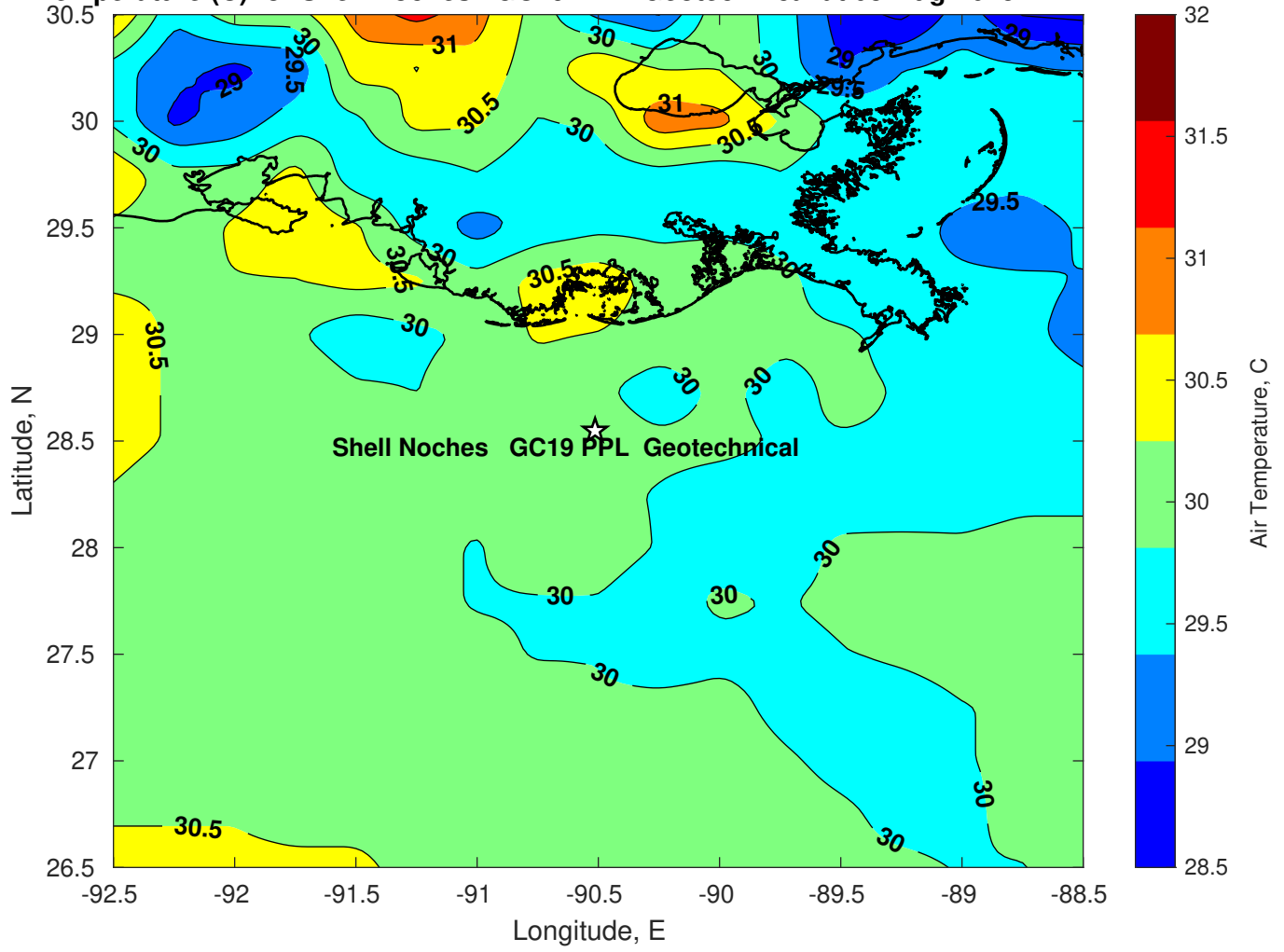
Surface Pressure (mb) for Shell Noches GC19 PPL Geotechnical at 10-Aug-2025 00:00:00



Air Temperature (C) for Shell Noches GC19 PPL Geotechnical at 08-Aug-2025



Air Temperature (C) for Shell Noches GC19 PPL Geotechnical at 08-Aug-2025



Air Temperature (C) for Shell Noches GC19 PPL Geotechnical at 08-Aug-2025

