

\*\*\*\*\*

Marine Weather Forecast for CSA (ONHYM) PPL EBS - Ghana

Forecast valid as of 18-Dec-2025 0900 GMT

\*\*\*\*\*

All times are local.

Today

Winds: N, 5-10 kts.

Waves: NW, 3-4 feet, 12-13 sec.

Currents: NE, 0.5-1 kts.

Tonight

Winds: N, 5-10 kts.

Waves: NW, 3-4 feet, 12-13 sec.

Currents: E, 0.5-1 kts.

Friday

Winds: N, 5-10 kts.

Waves: NW, 3-4 feet, 11-12 sec.

Currents: E, 1-1.5 kts.

Friday Night

Winds: N, 5-10 kts.

Waves: NW, 2-3 feet, 10-11 sec.

Currents: E, 0.5-1 kts.

Saturday

Winds: N, 5-10 kts.

Waves: N, 2-3 feet, 12-13 sec.

Currents: E, 0.5-1 kts.

Saturday Night

Winds: N, 10-15 kts.

Waves: N, 2-3 feet, 12-13 sec.

Currents: E, 0.5-1 kts.

Sunday

Winds: NW, 5-10 kts.

Waves: N, 2-3 feet, 11-12 sec.

Currents: E, 1-1.5 kts.

Sunday Night

Winds: N, 10-15 kts.

Waves: N, 2-3 feet, 10-11 sec.

Currents: NE, 1-1.5 kts.

Monday

Winds: N, 5-10 kts.

Waves: N, 2-3 feet, 10-11 sec.

Currents: NE, 0.5-1 kts.

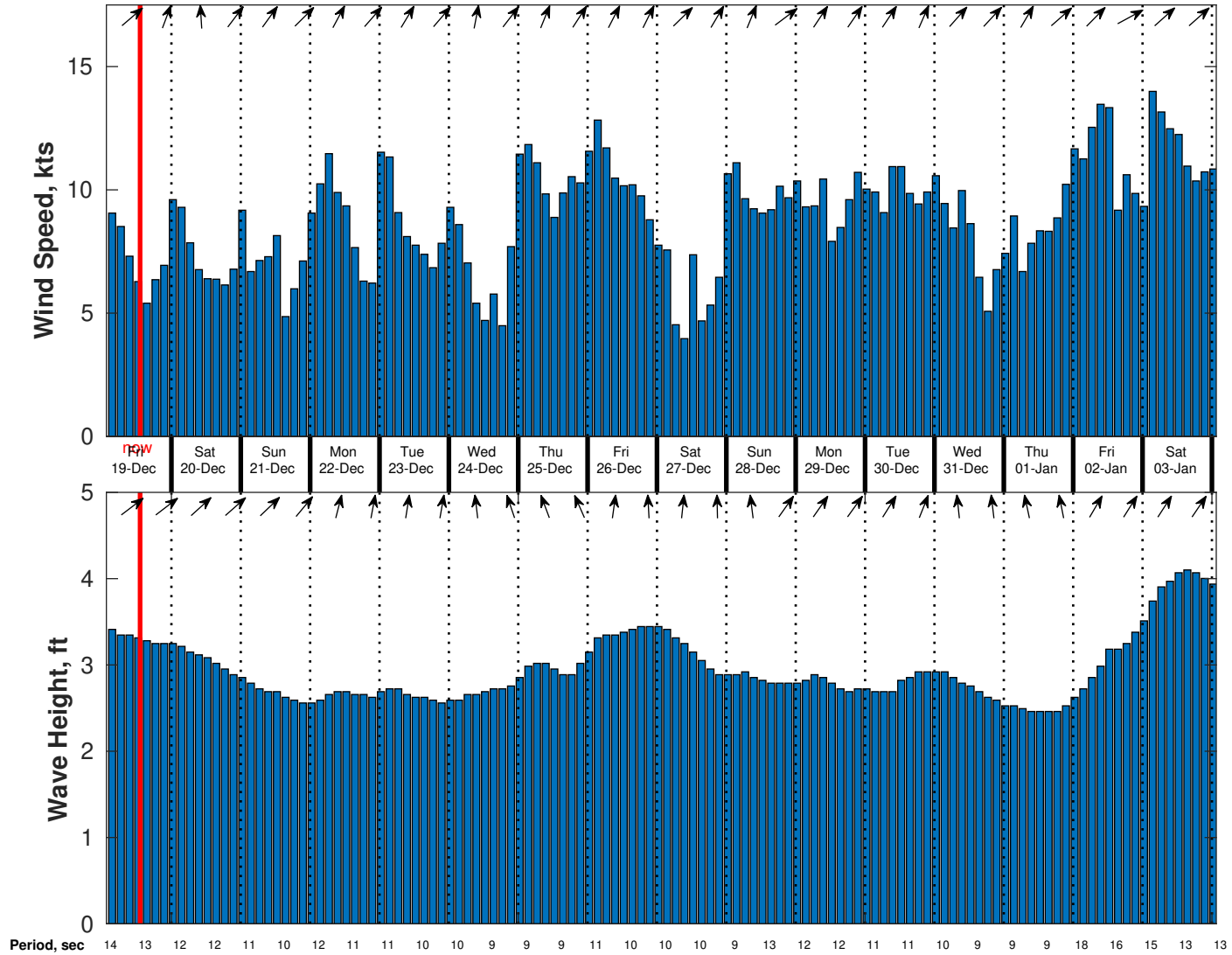
Monday Night

Winds: N, 5-10 kts.

Waves: N, 2-3 feet, 9-10 sec.

Currents: NE, 0.5-1 kts.

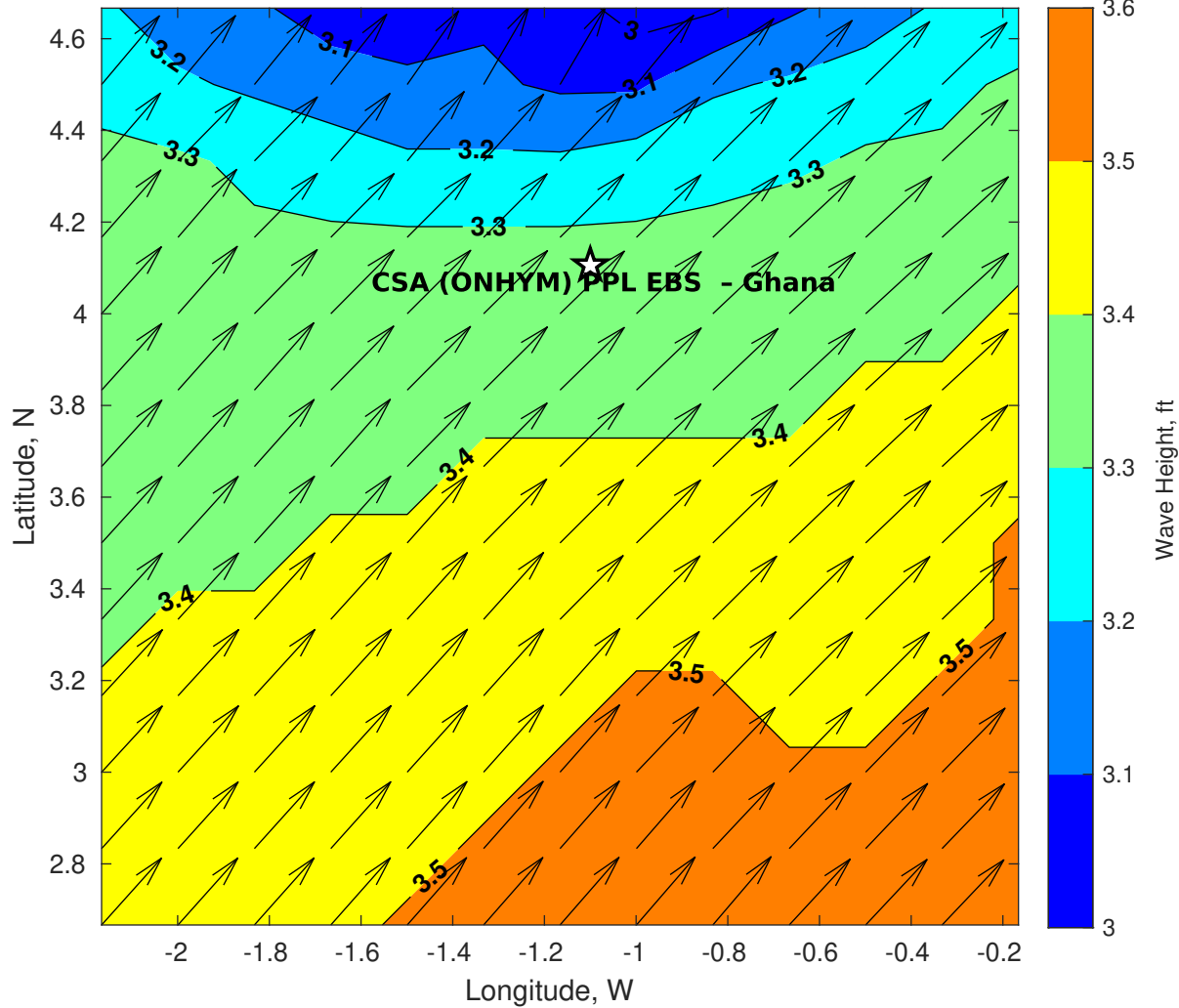
**Wind & Wave Forecast for CSA (ONHYM) PPL EBS - Ghana from 18-Dec-2025 02:00:00 to 03-Jan-2026 02:00:00**



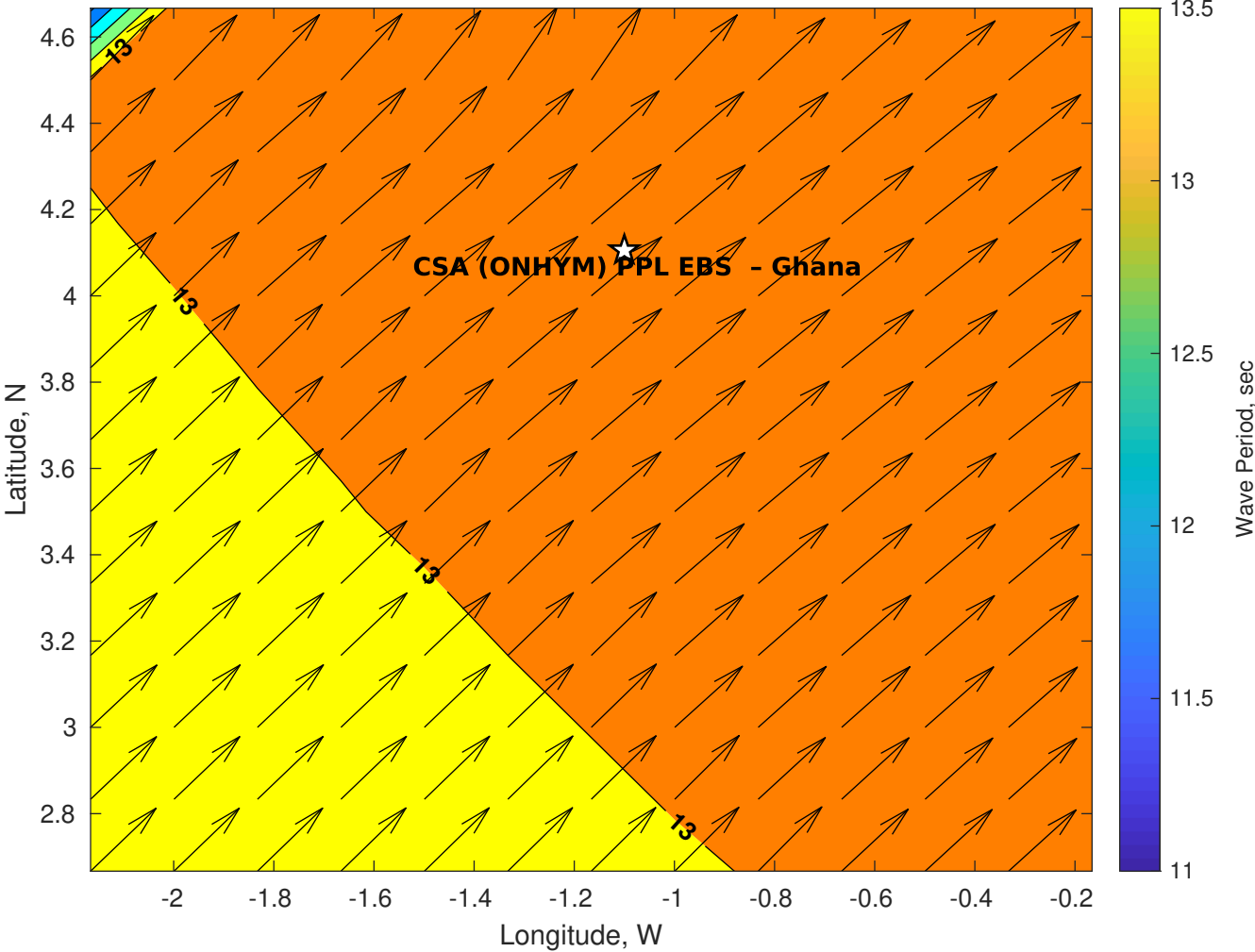
**Met Forecast for CSA (ONHYM) PPL EBS - Ghana for 18-Dec-2025 0900 GMT**

**No Atmospheric Data**

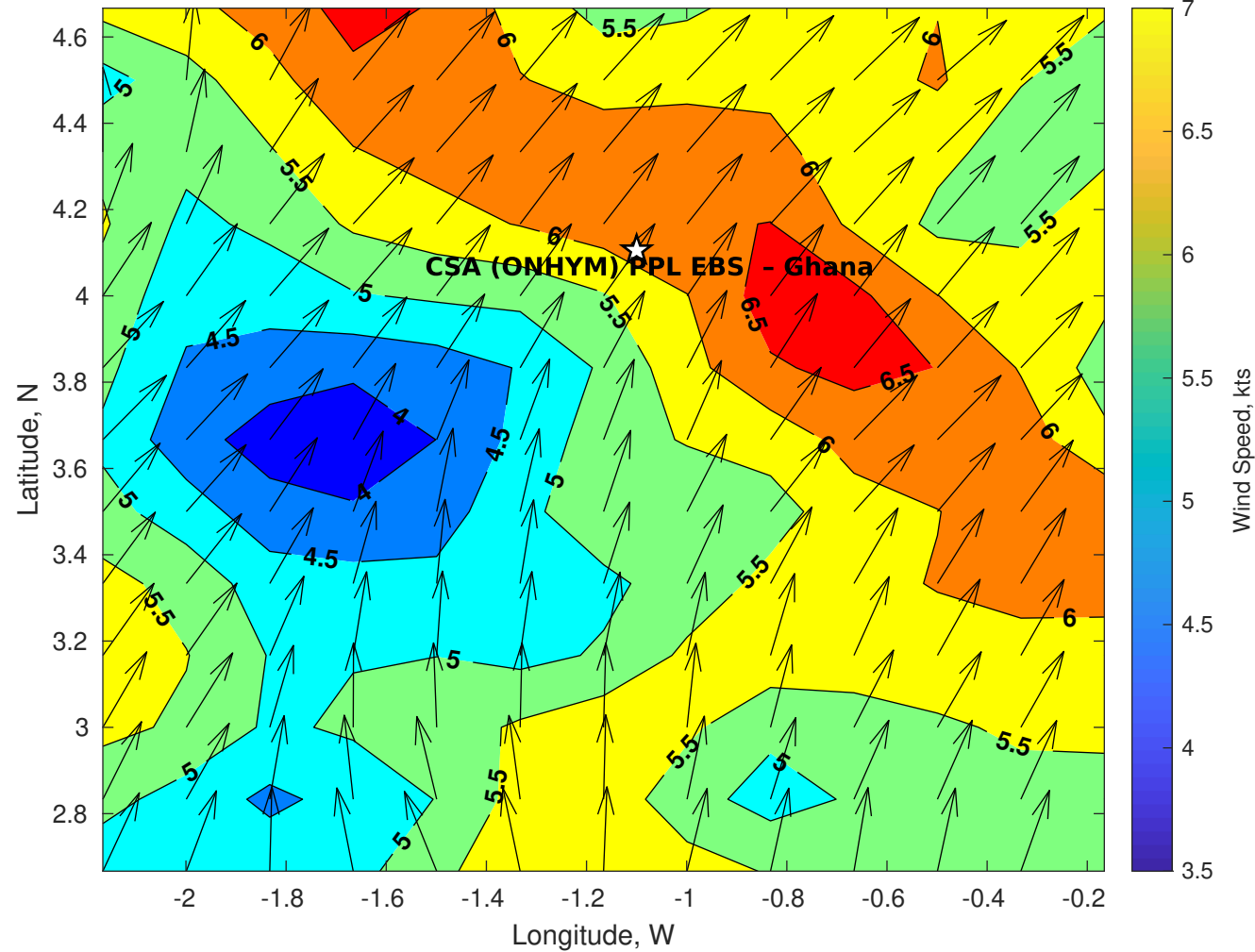
GFS Wave Height (ft) for CSA (ONHYM) PPL EBS - Ghana at 18-Dec-2025 09:00:00



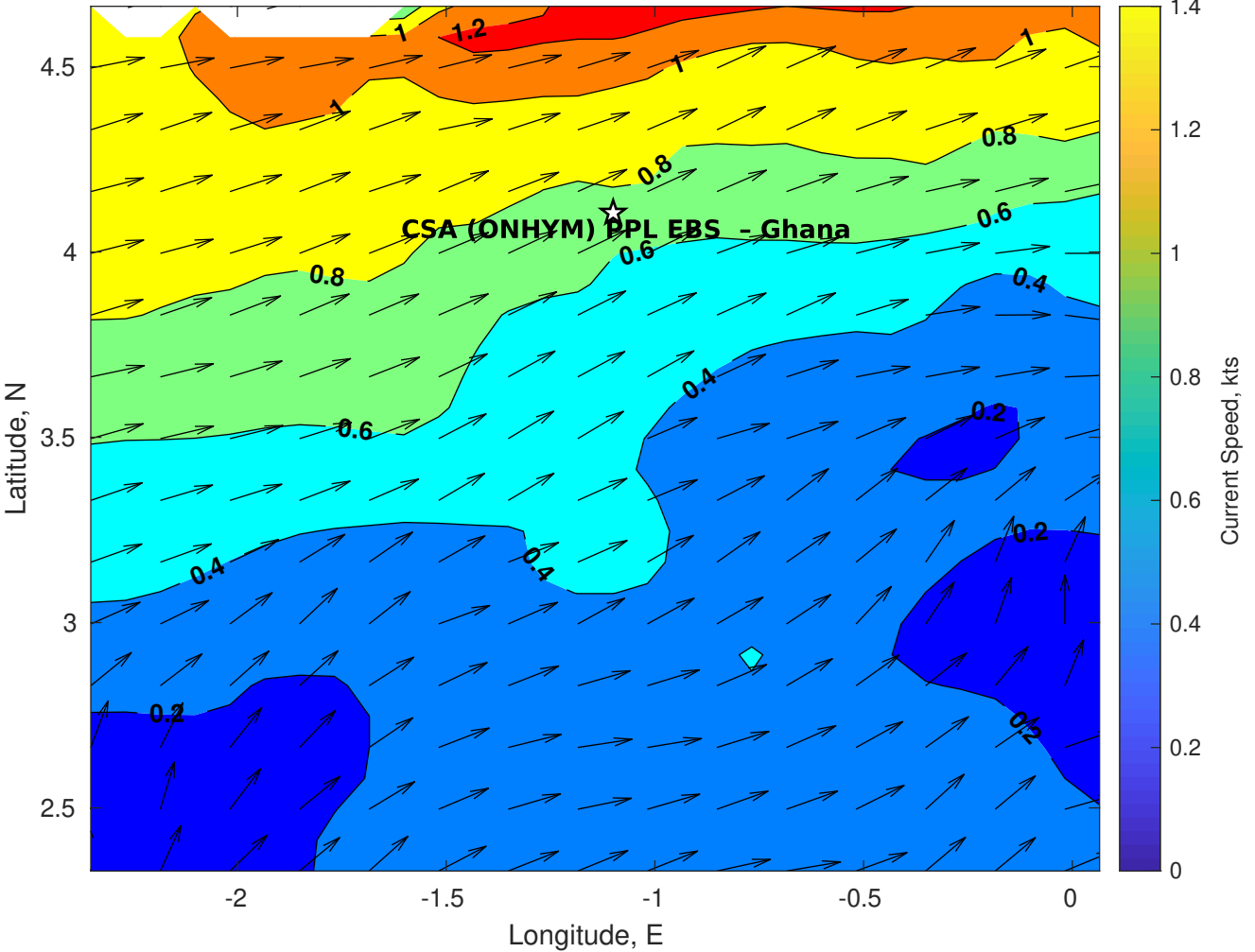
GFS Wave Period (sec) for CSA (ONHYM) PPL EBS - Ghana at 18-Dec-2025 09:00:00



GFS Winds (kts) for CSA (ONHYM) PPL EBS - Ghana at 18-Dec-2025 09:00:00



Surface Currents for CSA (ONHYM) PPL EBS - Ghana at 17-Dec-2025 00:00:00





**No Surface Pressure Data**



**No Surface Pressure Data**



**No Surface Pressure Data**



**No Surface Air Temperature Data**



**No Surface Air Temperature Data**



**No Surface Air Temperature Data**