

\*\*\*\*\*

Marine Weather Forecast for CSA (ONHYM) PPL EBS - Ghana

Forecast valid as of 31-Dec-2025 0900 GMT

\*\*\*\*\*

All times are local.

Today

Winds: N, 5-10 kts.  
Waves: N, 2-3 feet, 8-9 sec.  
Currents: E, 0.5-1 kts.

Tonight

Winds: N, 10-15 kts.  
Waves: N, 2-3 feet, 8-9 sec.  
Currents: E, 0.5-1 kts.

Thursday

Winds: N, 10-15 kts.  
Waves: N, 2-3 feet, 8-9 sec.  
Currents: E, 0.5-1 kts.

Thursday Night

Winds: NW, 10-15 kts.  
Waves: N, 3-4 feet, 5-6 sec.  
Currents: NE, 0.5-1 kts.

Friday

Winds: NW, 10-15 kts.  
Waves: N, 3-4 feet, 5-6 sec.  
Currents: NE, 0.5-1 kts.

Friday Night

Winds: N, 10-15 kts.  
Waves: N, 2-3 feet, 5-6 sec.  
Currents: NE, 1-1.5 kts.

Saturday

Winds: N, 5-10 kts.  
Waves: N, 2-3 feet, 19-20 sec.  
Currents: NE, 1-1.5 kts.

Saturday Night

Winds: N, 5-10 kts.  
Waves: NW, 2-3 feet, 19-20 sec.  
Currents: E, 1-1.5 kts.

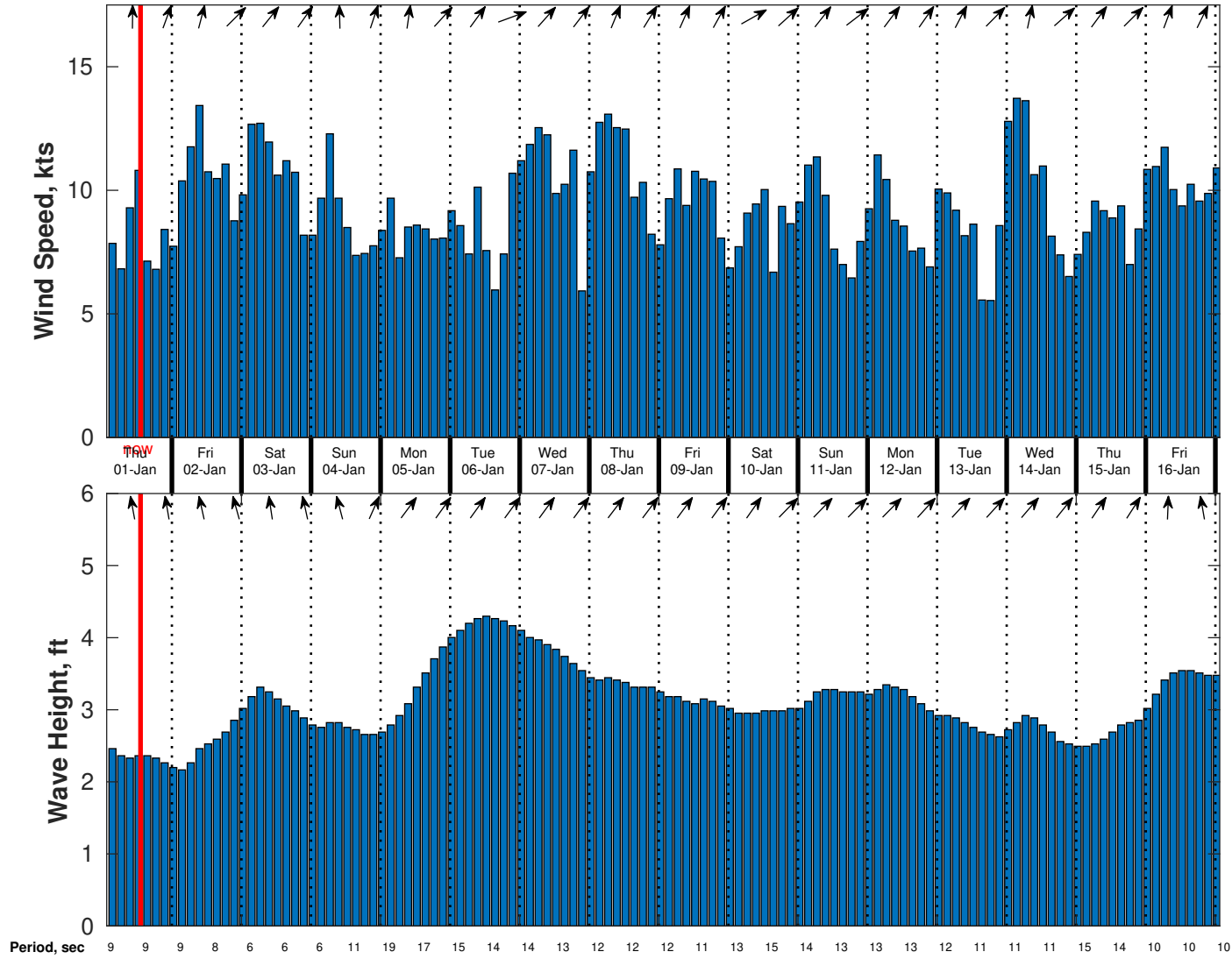
Sunday

Winds: N, 5-10 kts.  
Waves: NW, 3-4 feet, 17-18 sec.  
Currents: E, 1-1.5 kts.

Sunday Night

Winds: N, 5-10 kts.  
Waves: NW, 4-5 feet, 15-16 sec.  
Currents: E, 1-1.5 kts.

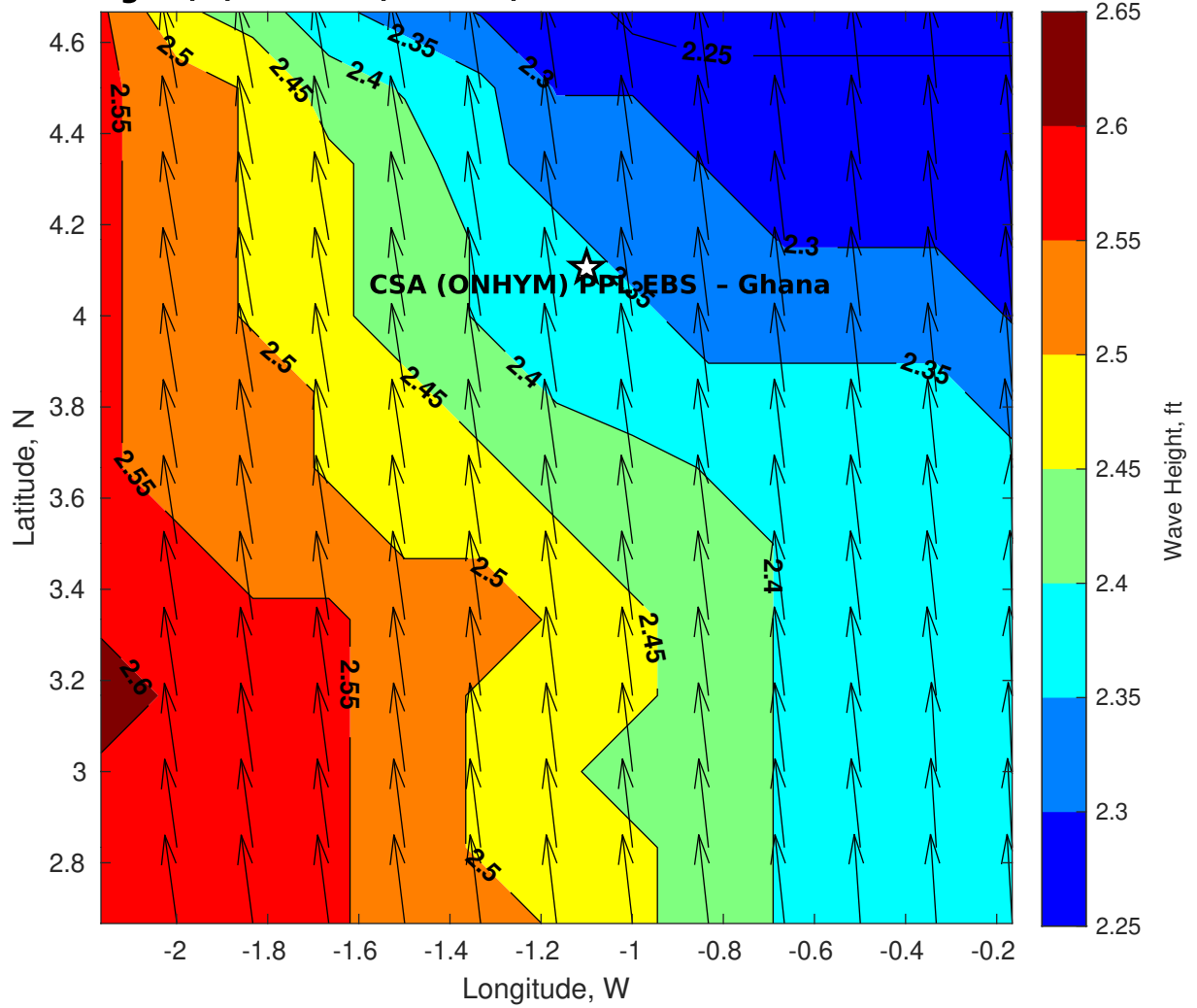
**Wind & Wave Forecast for CSA (ONHYM) PPL EBS - Ghana from 31-Dec-2025 02:00:00 to 16-Jan-2026 02:00:00**



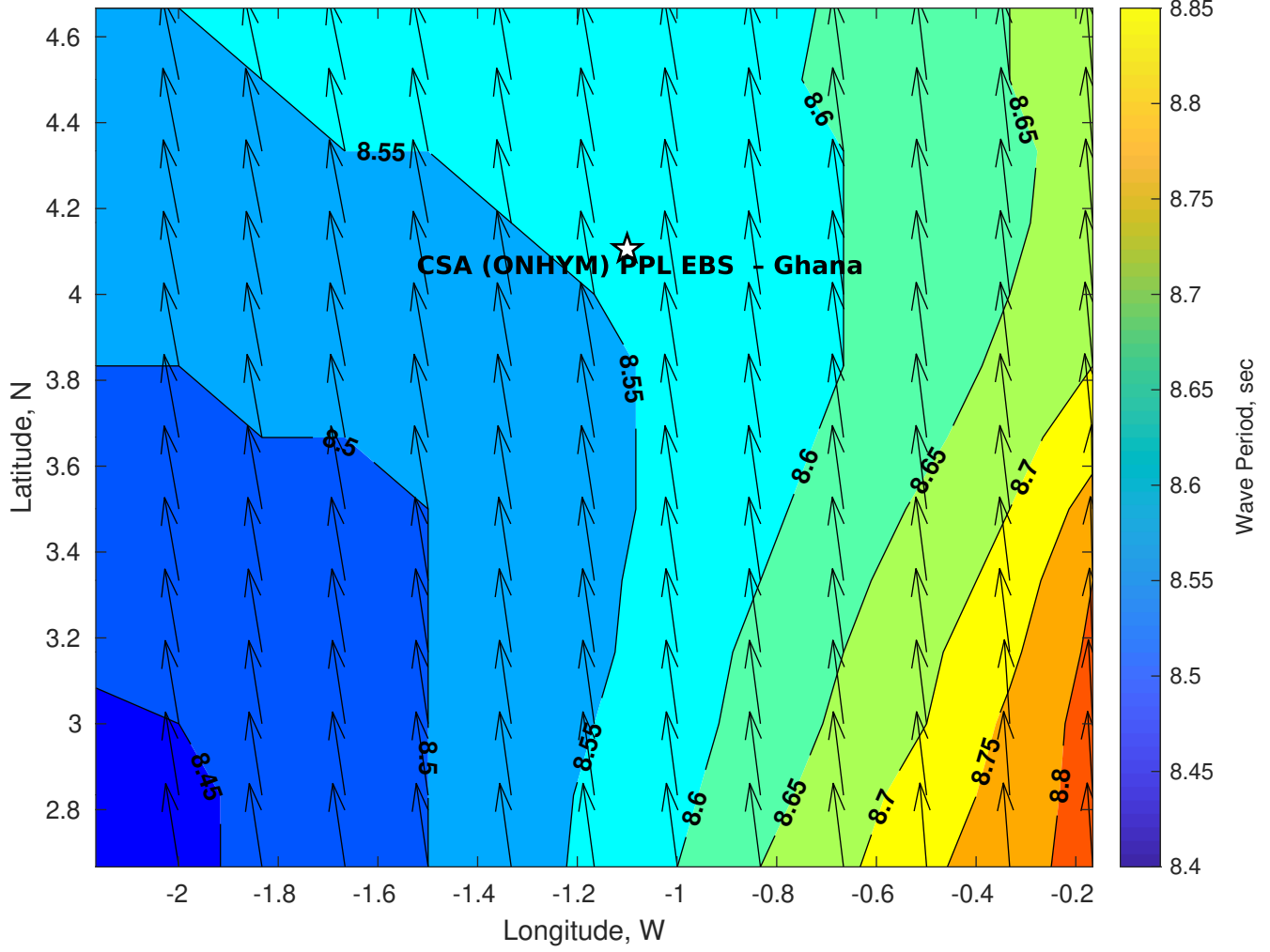
**Met Forecast for CSA (ONHYM) PPL EBS - Ghana for 31-Dec-2025 0900 GMT**

**No Atmospheric Data**

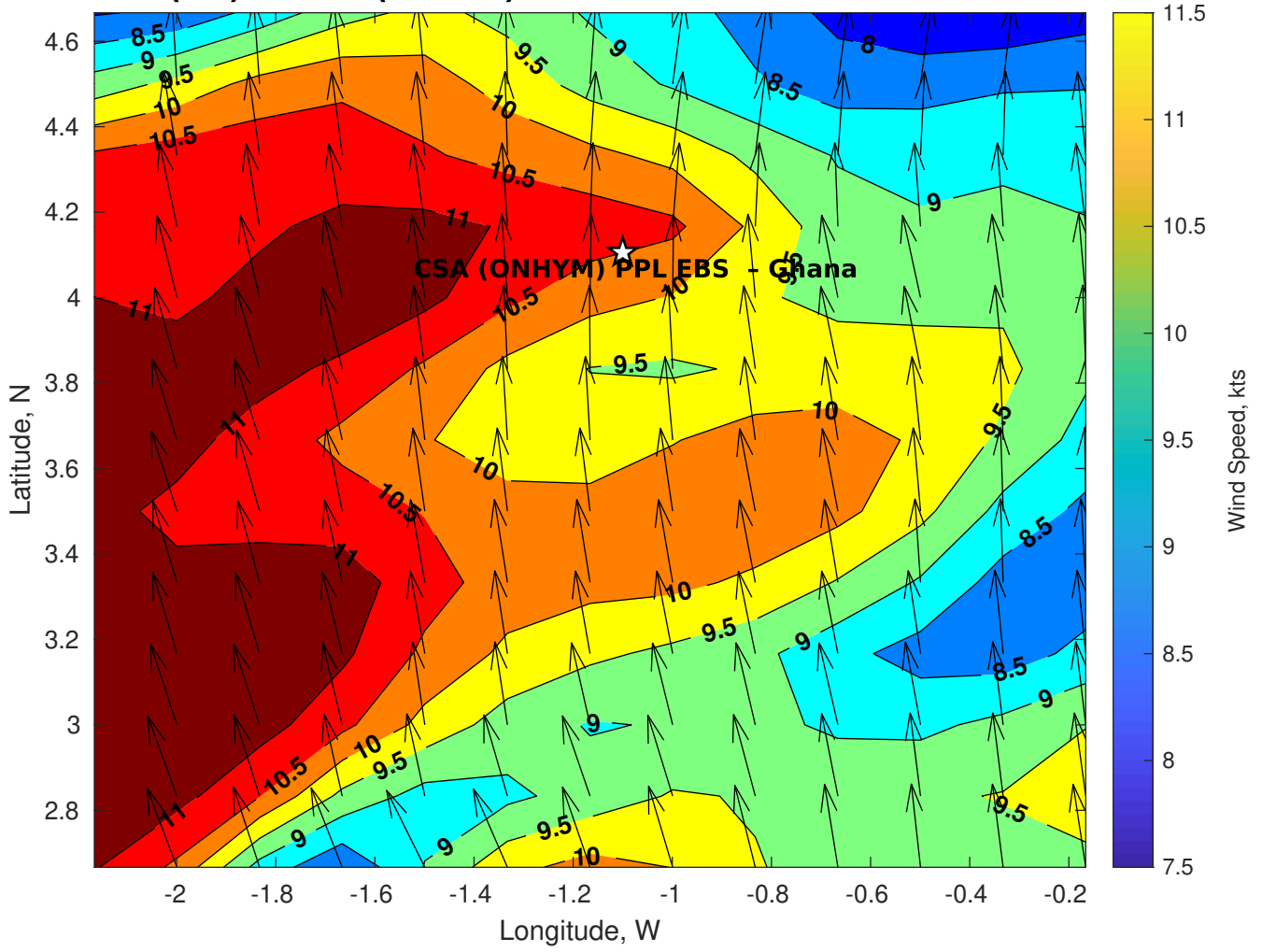
**GFS Wave Height (ft) for CSA (ONHYM) PPL EBS - Ghana at 31-Dec-2025 09:00:00**



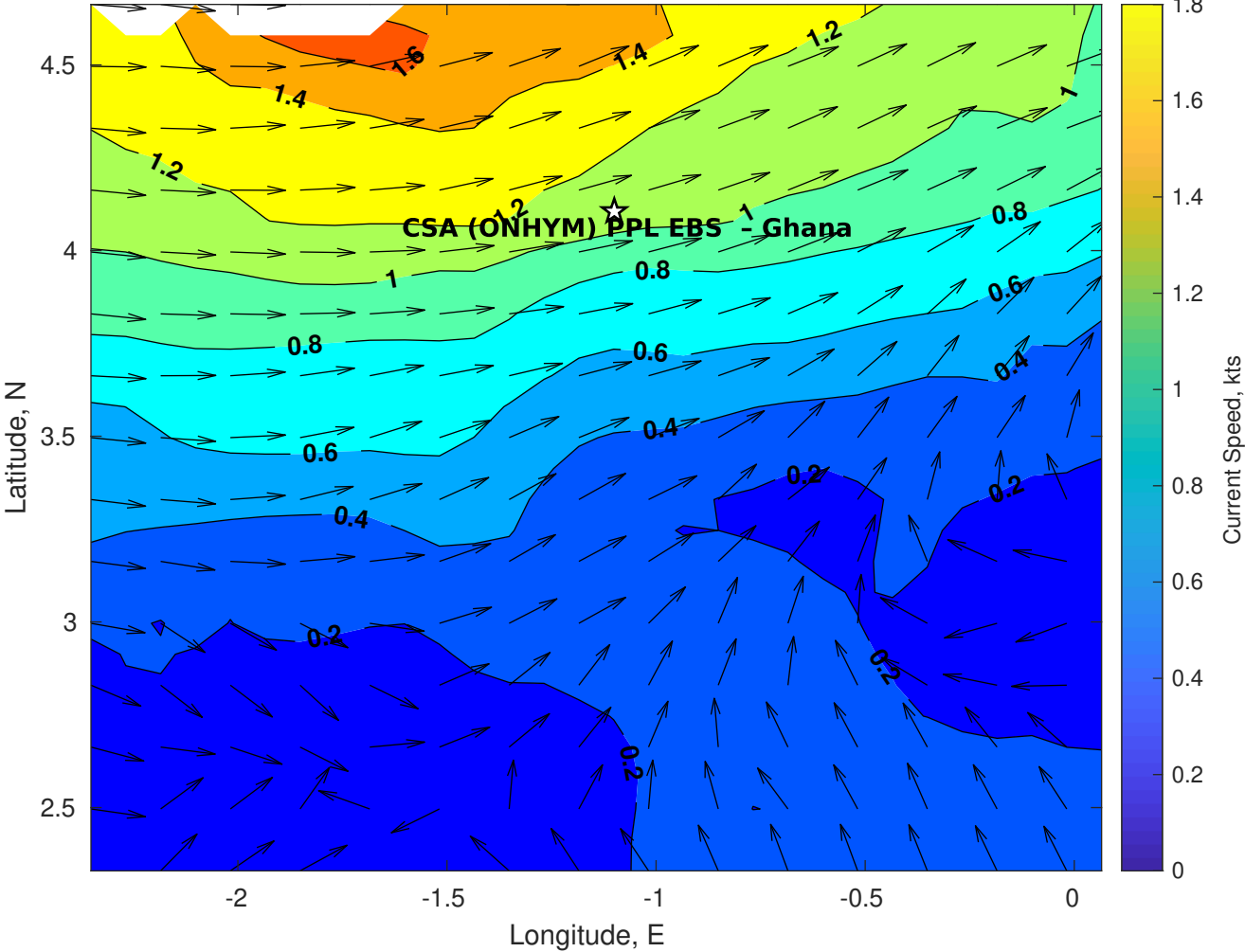
**GFS Wave Period (sec) for CSA (ONHYM) PPL EBS - Ghana at 31-Dec-2025 09:00:00**



**GFS Winds (kts) for CSA (ONHYM) PPL EBS - Ghana at 31-Dec-2025 09:00:00**



Surface Currents for CSA (ONHYM) PPL EBS - Ghana at 30-Dec-2025 00:00:00





**No Surface Pressure Data**





**No Surface Pressure Data**



**No Surface Pressure Data**



**No Surface Air Temperature Data**



**No Surface Air Temperature Data**



**No Surface Air Temperature Data**