
Marine Weather Forecast for CSA (ONHYM) PPL EBS - Western Sahara
Forecast valid as of 01-Jan-2026 0900 GMT

All times are local.

Today

Winds: NW, 5-10 kts.
Waves: NW, 3-4 feet, 14-15 sec.
Currents: SW, less than 0.5 knot.

Tonight

Winds: NW, 5-10 kts.
Waves: NW, 4-5 feet, 12-13 sec.
Currents: S, less than 0.5 knot.

Friday

Winds: NW, 10-15 kts.
Waves: NW, 6-7 feet, 12-13 sec.
Currents: S, less than 0.5 knot.

Friday Night

Winds: NW, 10-15 kts.
Waves: NW, 6-7 feet, 12-13 sec.
Currents: E, less than 0.5 knot.

Saturday

Winds: NW, 10-15 kts.
Waves: NW, 7-8 feet, 11-12 sec.
Currents: E, less than 0.5 knot.

Saturday Night

Winds: W, 10-15 kts.
Waves: NW, 7-8 feet, 11-12 sec.
Currents: E, less than 0.5 knot.

Sunday

Winds: NW, 10-15 kts.
Waves: NW, 7-8 feet, 12-13 sec.
Currents: E, less than 0.5 knot.

Sunday Night

Winds: NW, 5-10 kts.
Waves: NW, 6-7 feet, 11-12 sec.
Currents: SE, less than 0.5 knot.

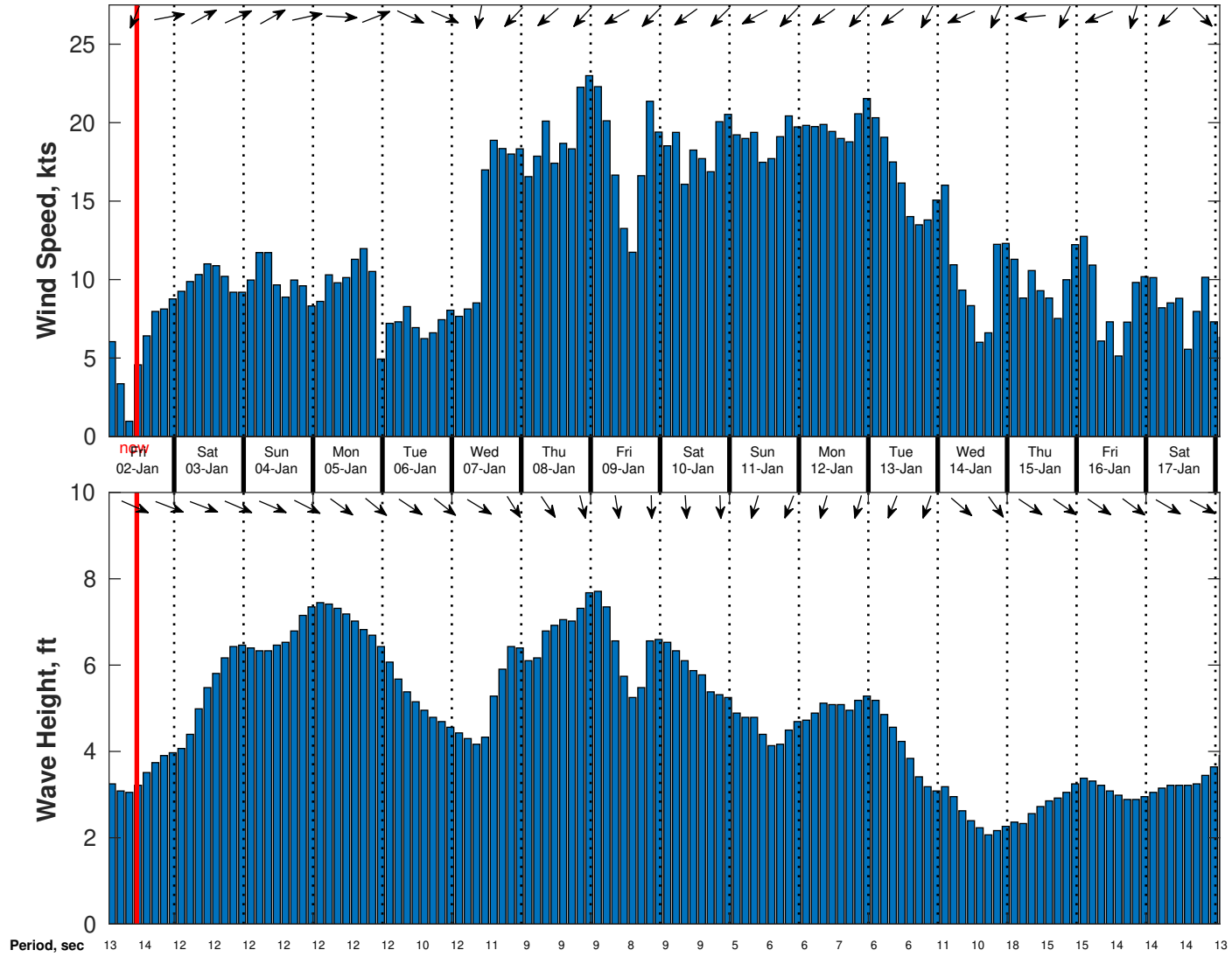
Monday

Winds: NW, 5-10 kts.
Waves: NW, 5-6 feet, 11-12 sec.
Currents: E, less than 0.5 knot.

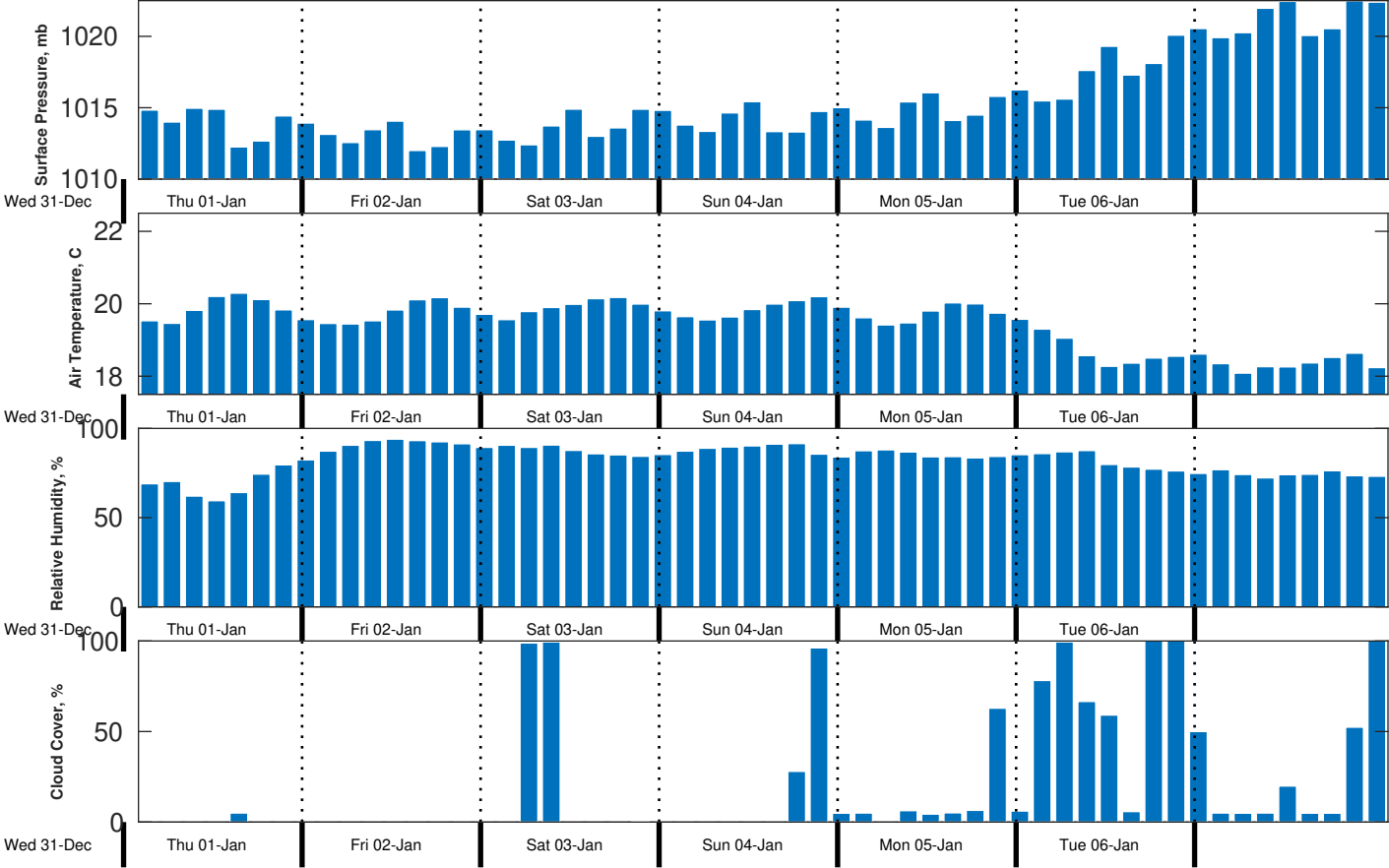
Monday Night

Winds: N, 5-10 kts.
Waves: NW, 4-5 feet, 11-12 sec.
Currents: SE, less than 0.5 knot.

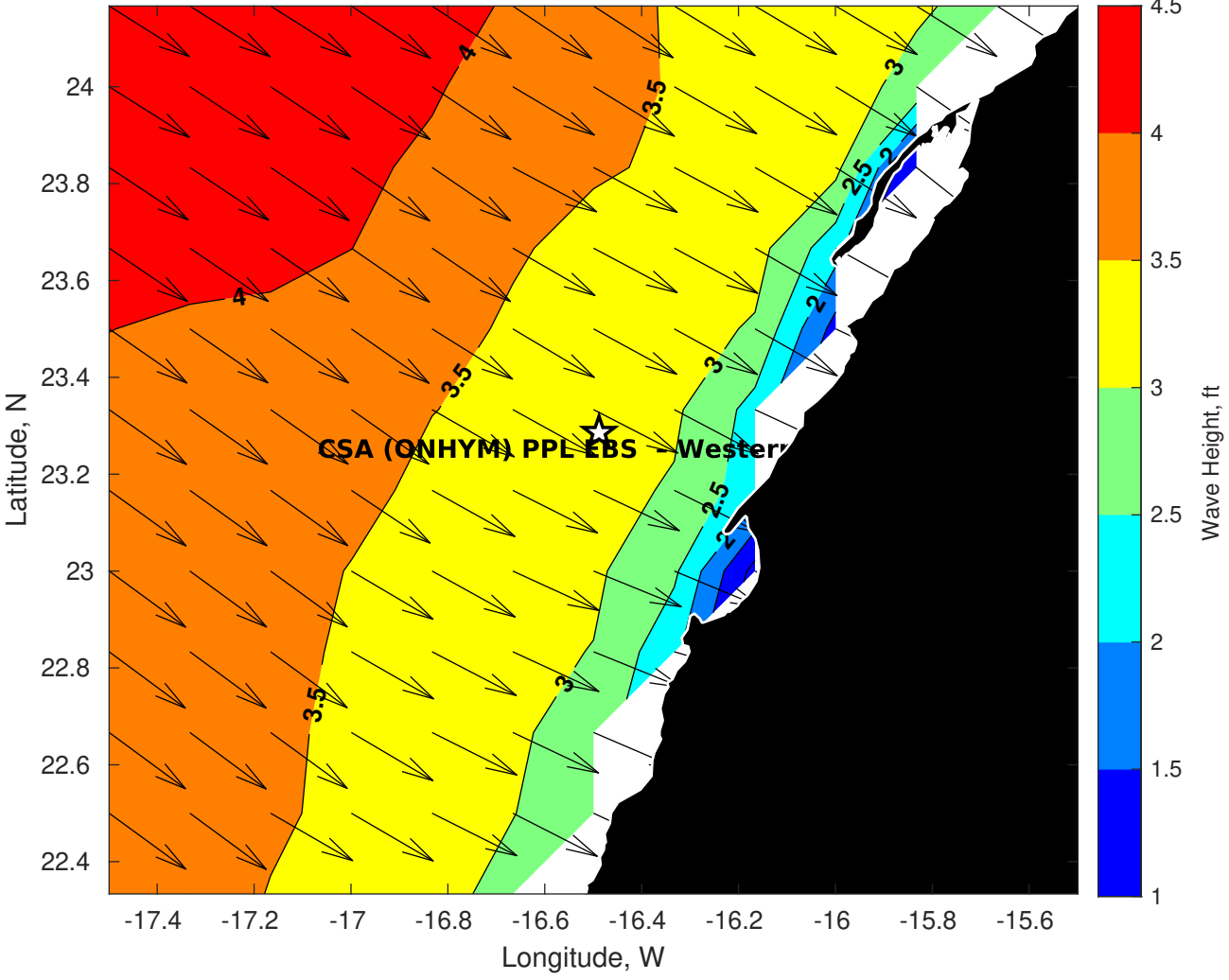
Wind & Wave Forecast for CSA (ONHYM) PPL EBS - Western Sahara from 01-Jan-2026 01:00:00 to 17-Jan-2026 01:00:00



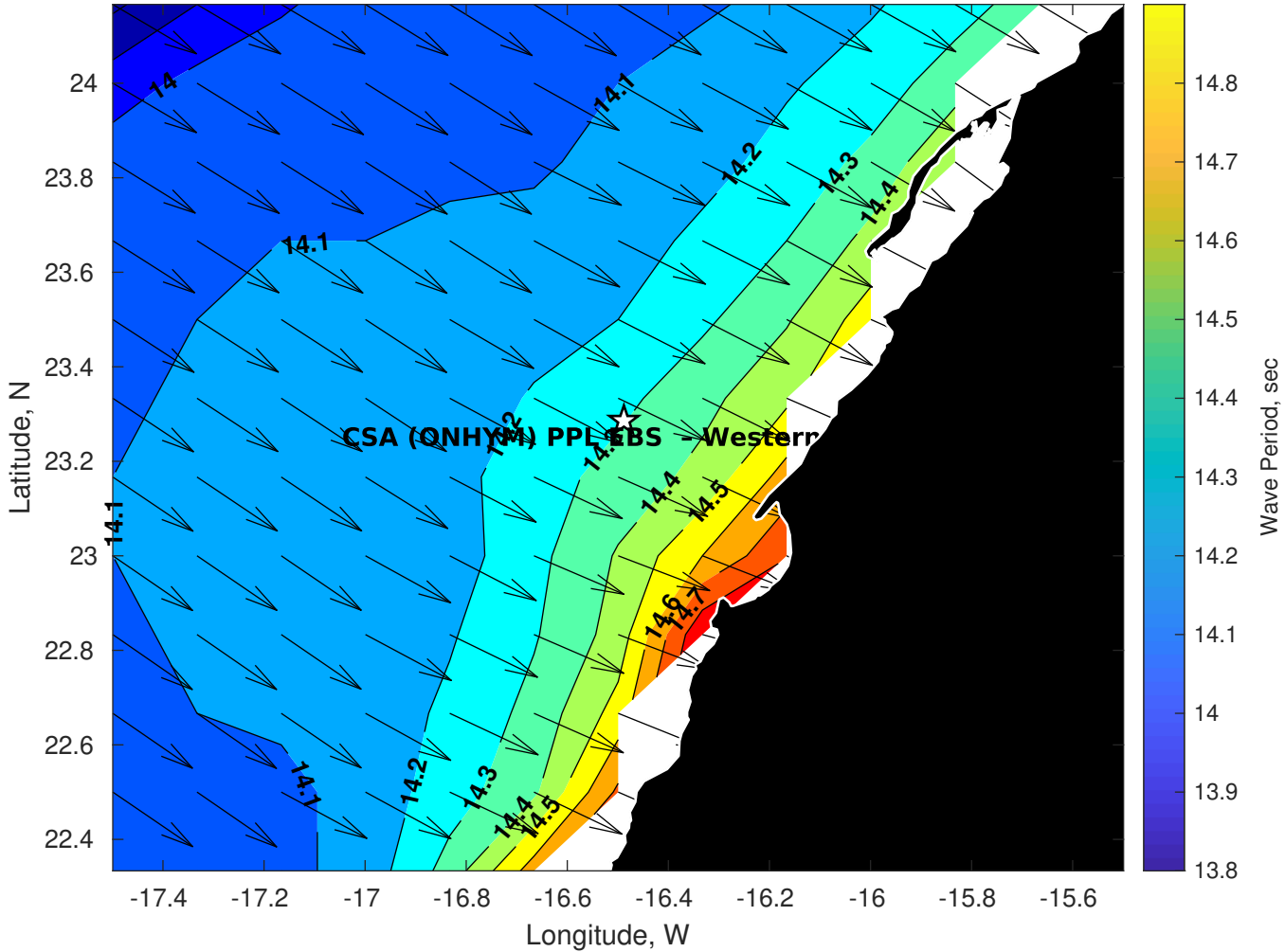
Met Forecast for CSA (ONHYM) PPL EBS - Western Sahara from 01-Jan-2026 00:00:00 to 08-Jan-2026 00:00:00



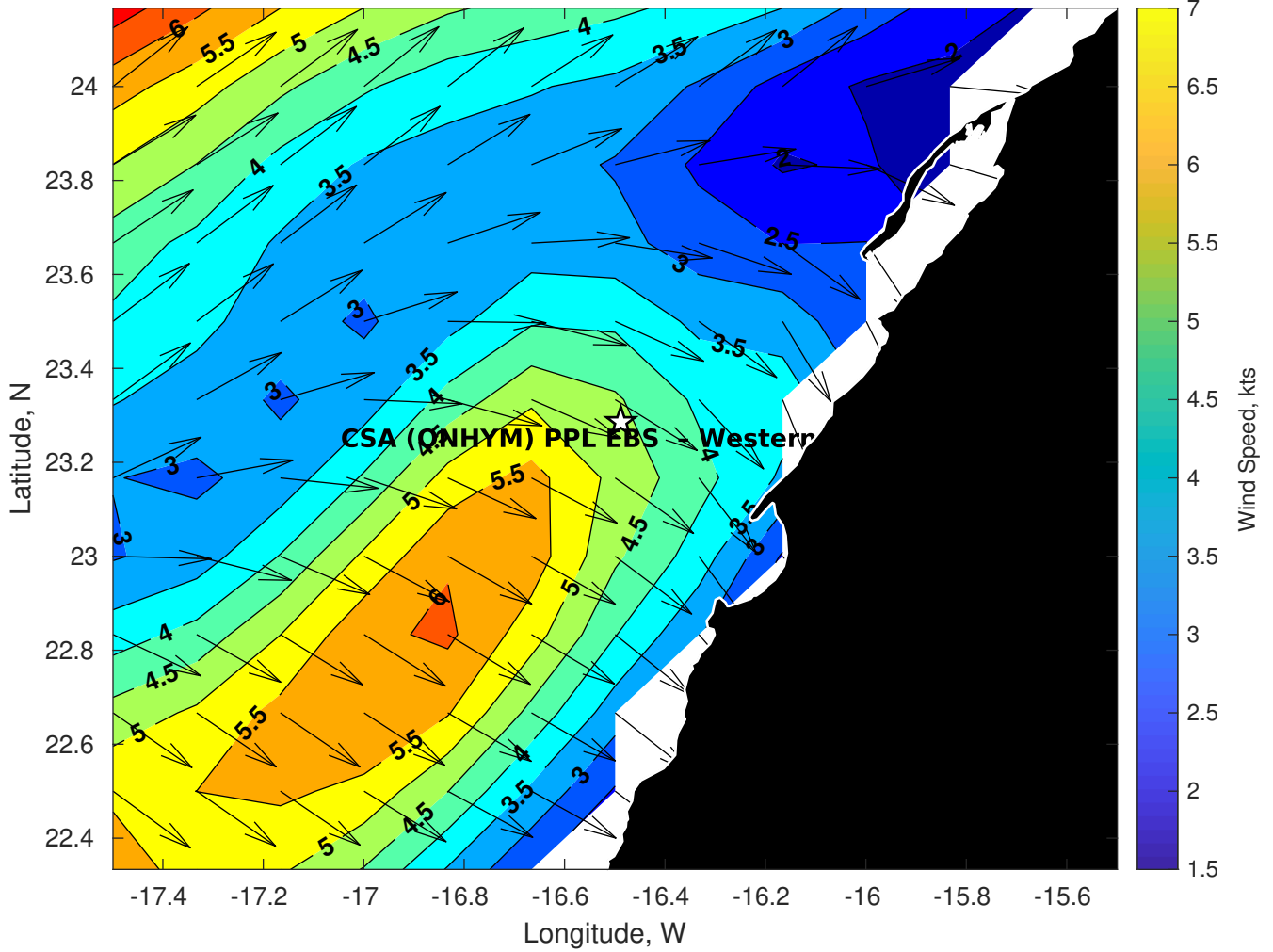
GFS Wave Height (ft) for CSA (ONHYM) PPL EBS - Western Sahara at 01-Jan-2026 09:00:00



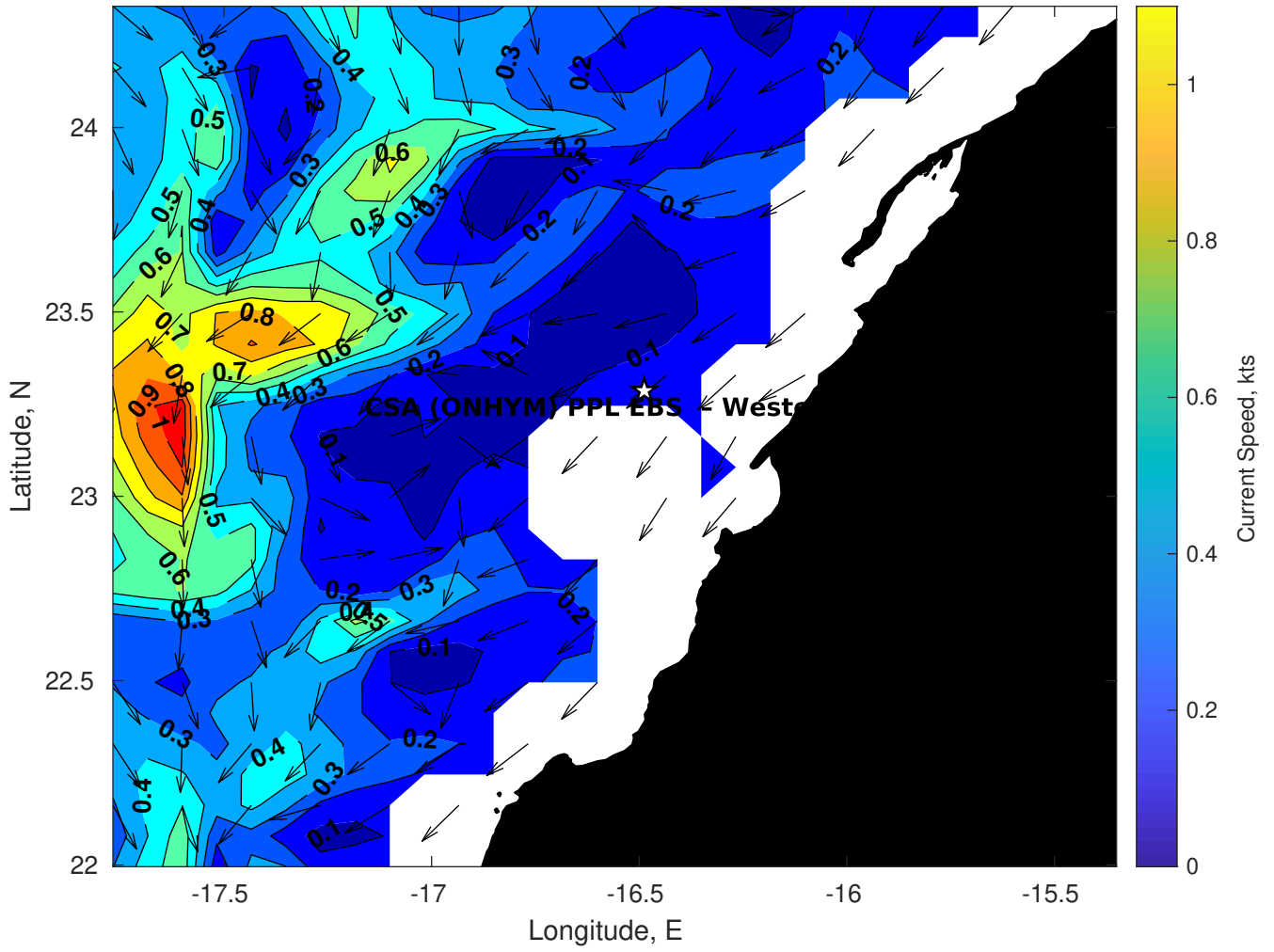
GFS Wave Period (sec) for CSA (ONHYM) PPL EBS - Western Sahara at 01-Jan-2026 09:00:00



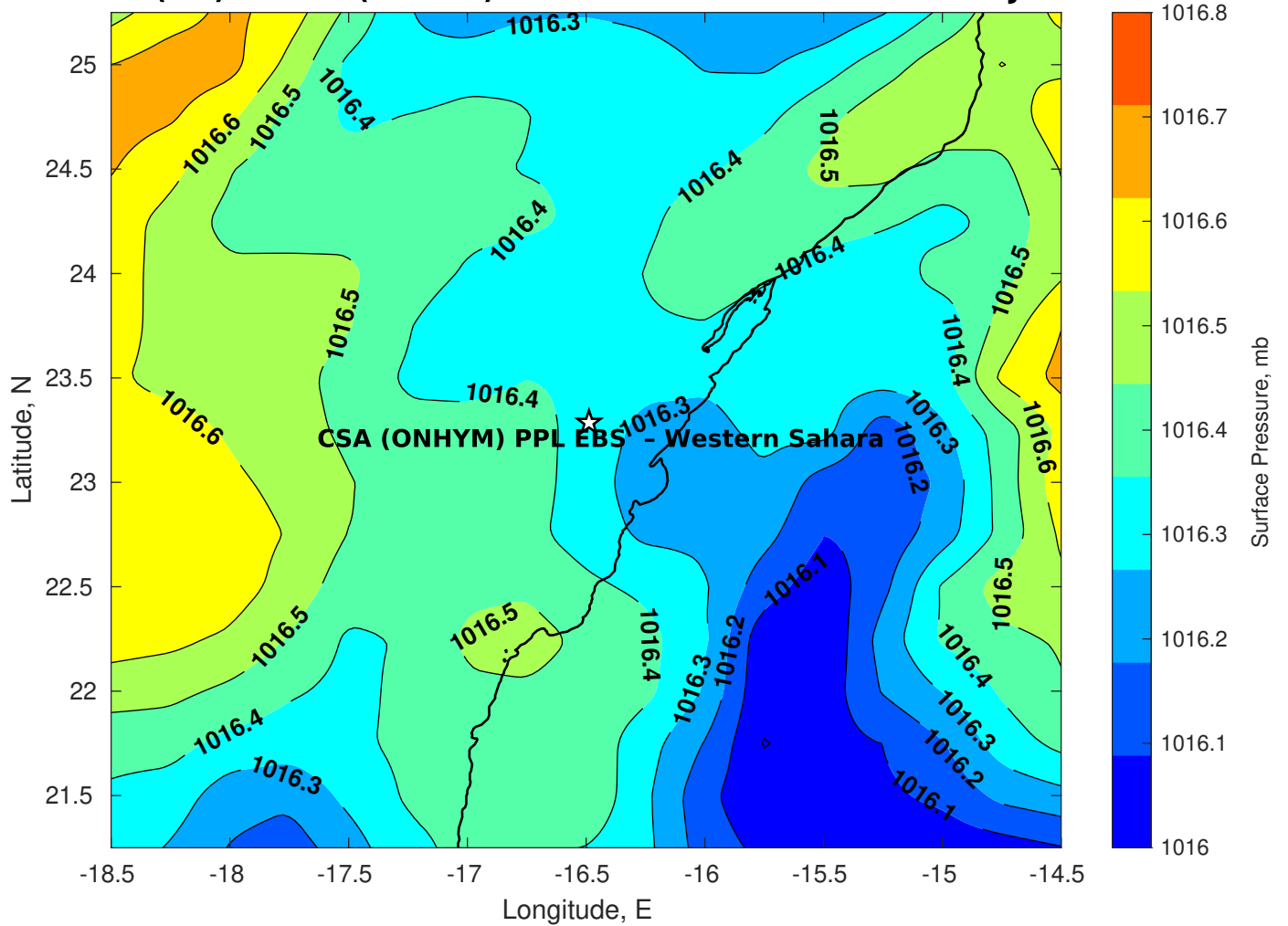
GFS Winds (kts) for CSA (ONHYM) PPL EBS - Western Sahara at 01-Jan-2026 09:00:00



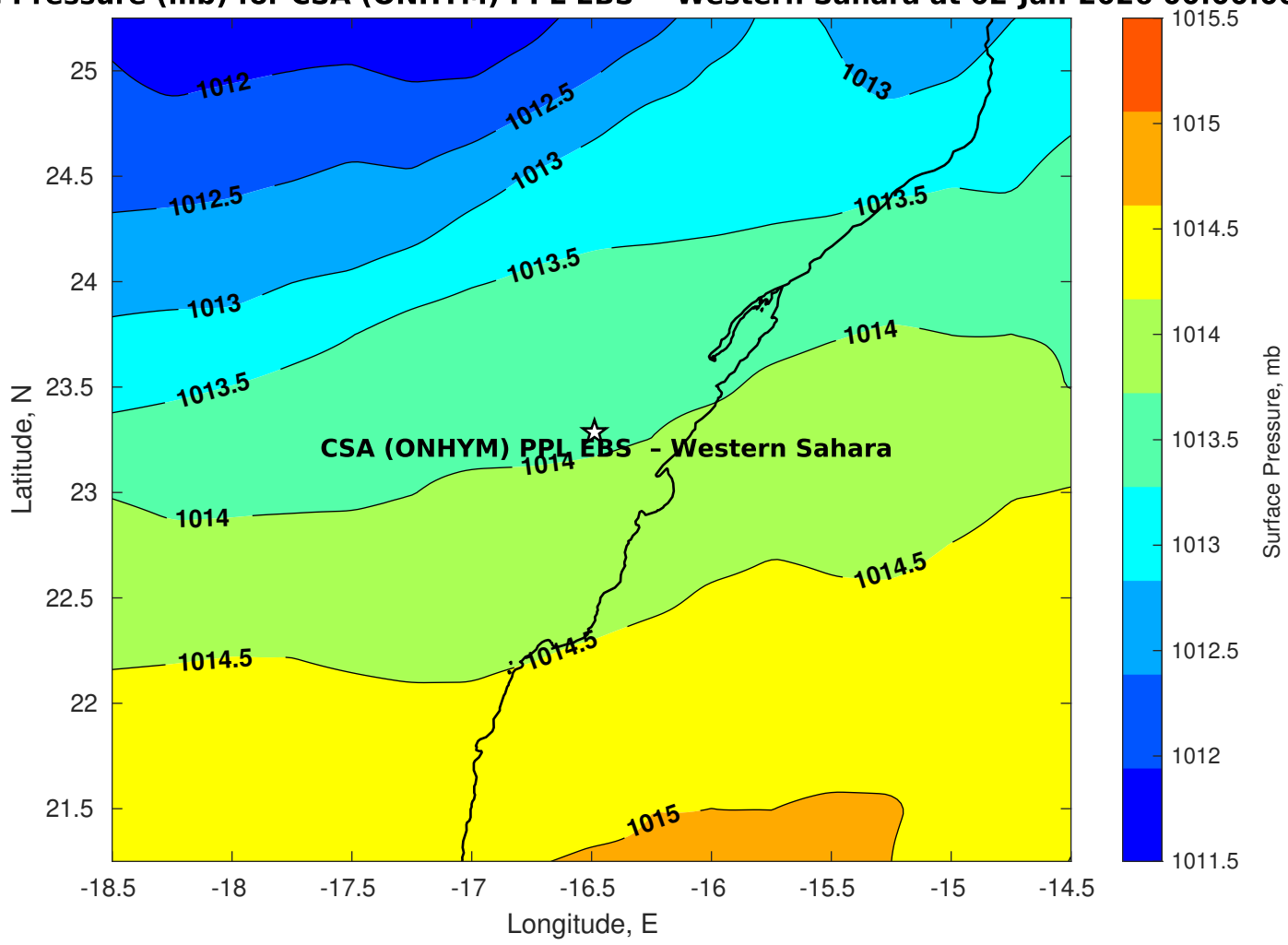
Surface Currents for CSA (ONHYM) PPL EBS - Western Sahara at 31-Dec-2025 00:00:00



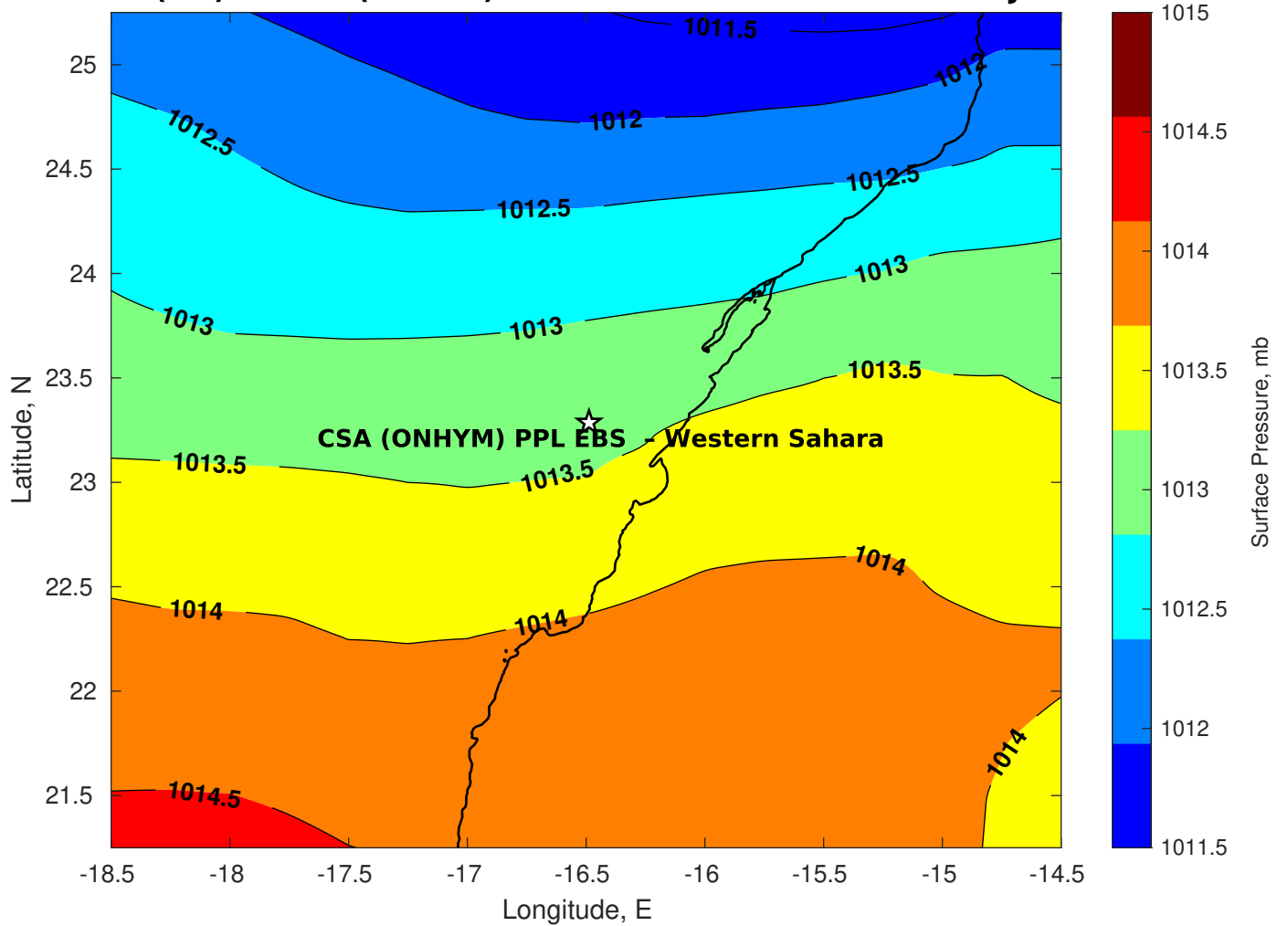
Surface Pressure (mb) for CSA (ONHYM) PPL EBS - Western Sahara at 01-Jan-2026 00:00:00



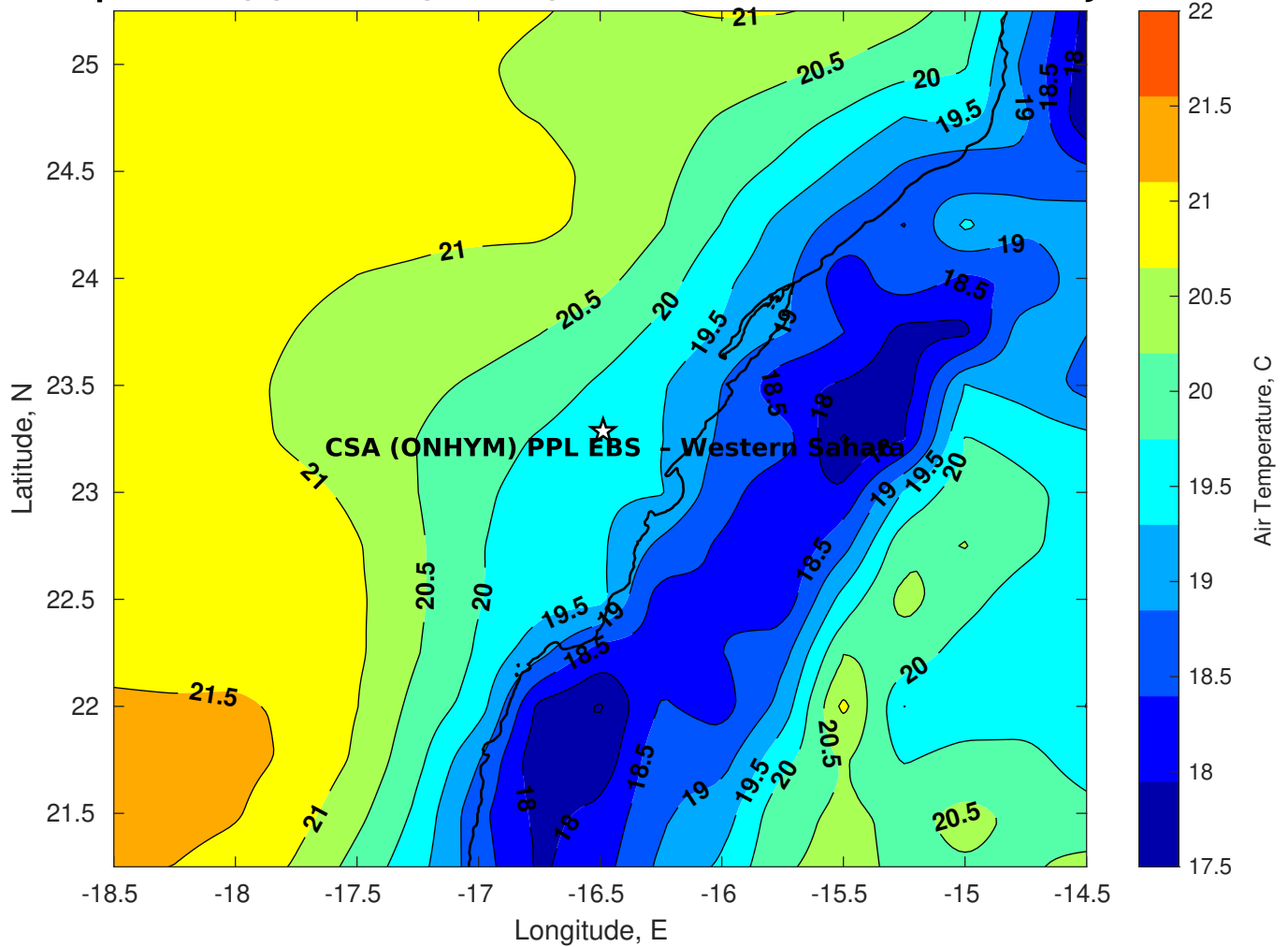
Surface Pressure (mb) for CSA (ONHYM) PPL EBS - Western Sahara at 02-Jan-2026 00:00:00



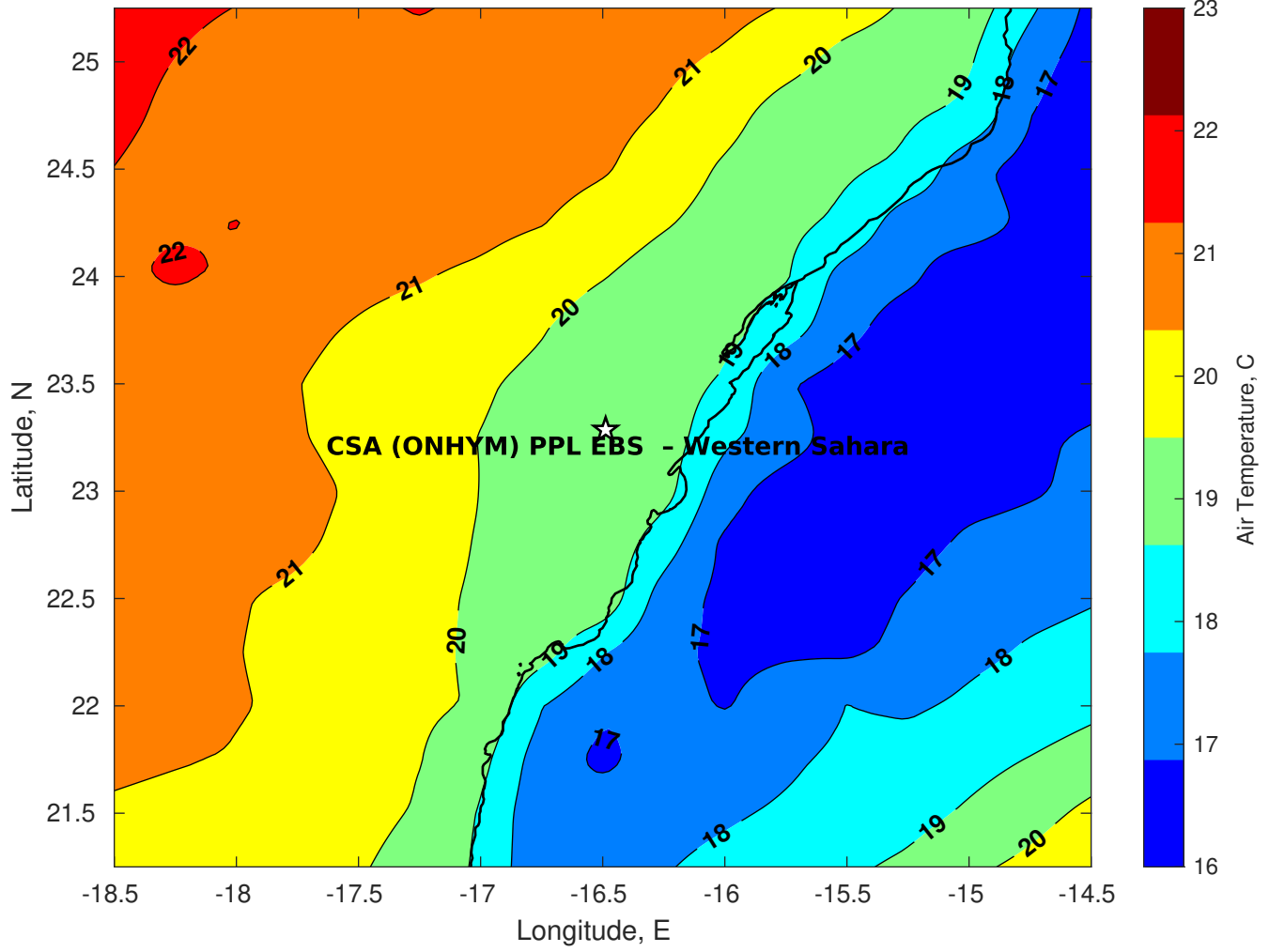
Surface Pressure (mb) for CSA (ONHYM) PPL EBS - Western Sahara at 03-Jan-2026 00:00:00



Air Temperature (C) for CSA (ONHYM) PPL EBS - Western Sahara at 01-Jan-2026



Air Temperature (C) for CSA (ONHYM) PPL EBS - Western Sahara at 01-Jan-2026



Air Temperature (C) for CSA (ONHYM) PPL EBS - Western Sahara at 01-Jan-2026

