
Marine Weather Forecast for CSA (ONHYM) PPL EBS - Western Sahara
Forecast valid as of 02-Jan-2026 2100 GMT

All times are local.

Today

Winds: NW, 10-15 kts.
Waves: NW, 6-7 feet, 11-12 sec.
Currents: E, less than 0.5 knot.

Tonight

Winds: W, 10-15 kts.
Waves: NW, 7-8 feet, 11-12 sec.
Currents: E, less than 0.5 knot.

Saturday

Winds: NW, 10-15 kts.
Waves: NW, 7-8 feet, 11-12 sec.
Currents: E, less than 0.5 knot.

Sunday Night

Winds: NW, 5-10 kts.
Waves: NW, 6-7 feet, 11-12 sec.
Currents: E, less than 0.5 knot.

Sunday

Winds: W, 10-15 kts.
Waves: NW, 7-8 feet, 12-13 sec.
Currents: E, less than 0.5 knot.

Monday Night

Winds: NE, 10-15 kts.
Waves: NW, 4-5 feet, 11-12 sec.
Currents: S, less than 0.5 knot.

Monday

Winds: N, 5-10 kts.
Waves: NW, 5-6 feet, 11-12 sec.
Currents: S, less than 0.5 knot.

Tuesday Night

Winds: NE, 20-25 kts.
Waves: N, 6-7 feet, 7-8 sec.
Currents: SW, less than 0.5 knot.

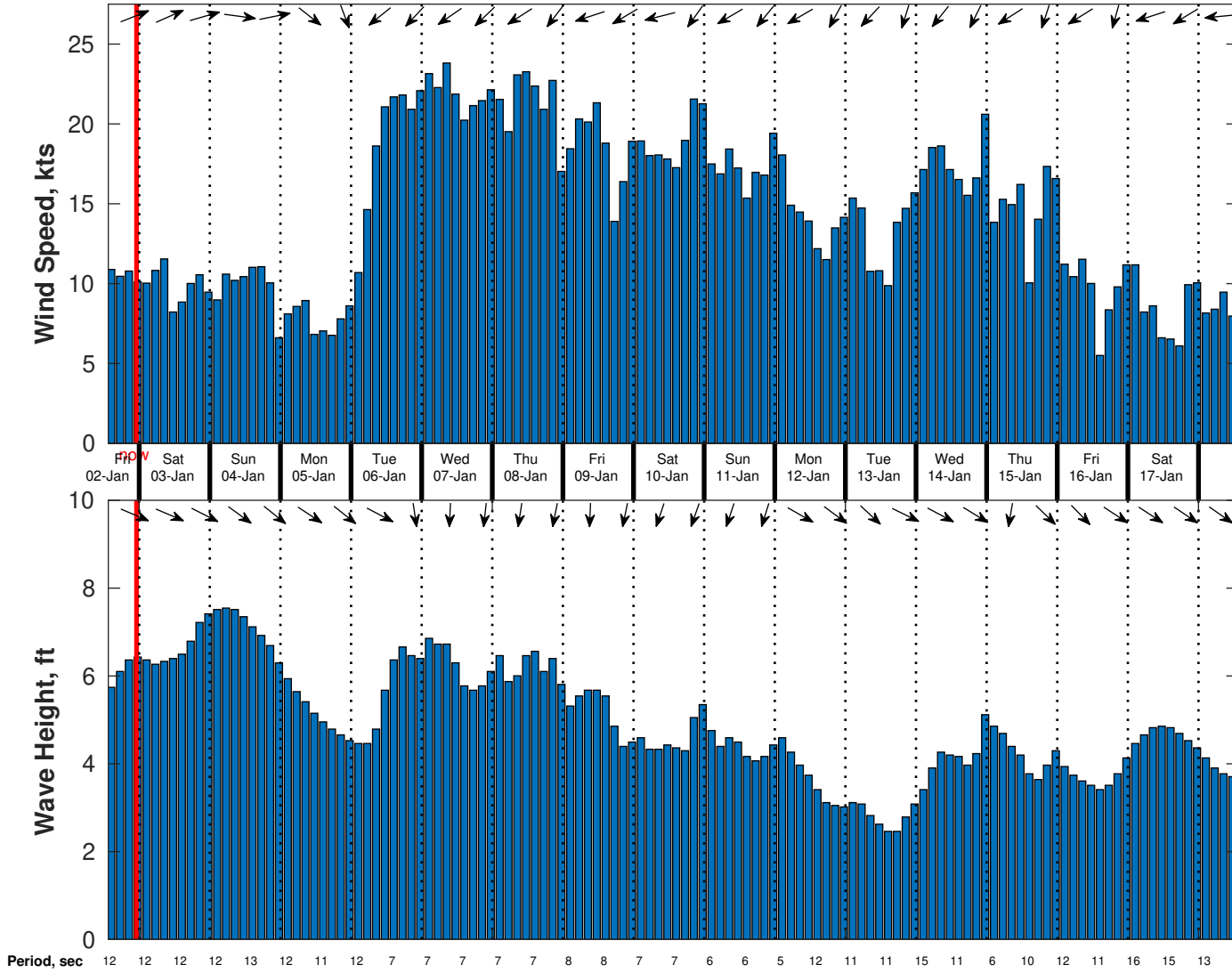
Tuesday

Winds: NE, 20-25 kts.
Waves: N, 6-7 feet, 11-12 sec.
Currents: SW, less than 0.5 knot.

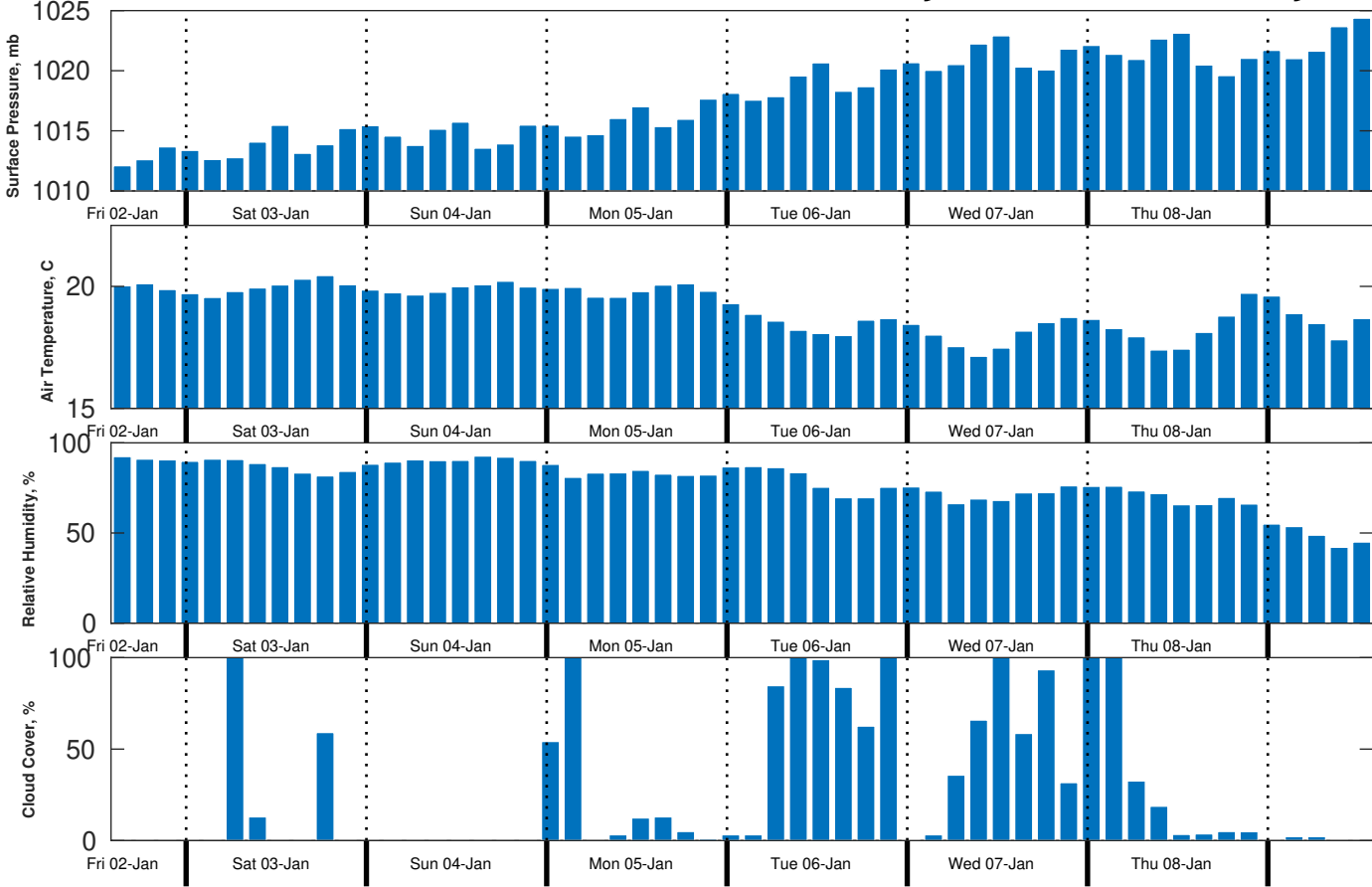
Wednesday Night

Winds: NE, 20-25 kts.
Waves: N, 6-7 feet, 7-8 sec.
Currents: SW, 0.5-1 kts.

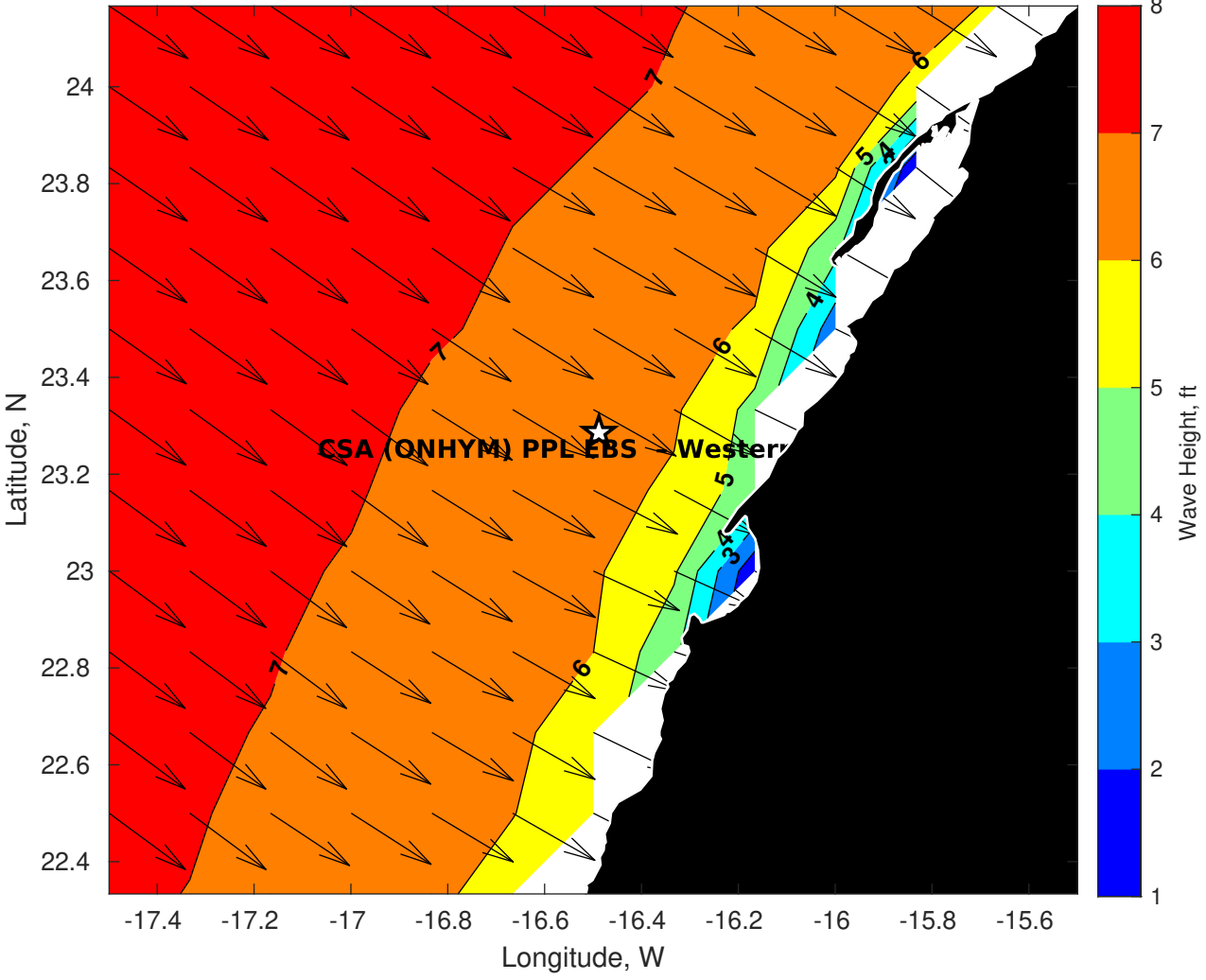
Wind & Wave Forecast for CSA (ONHYM) PPL EBS - Western Sahara from 02-Jan-2026 13:00:00 to 18-Jan-2026 13:00:00



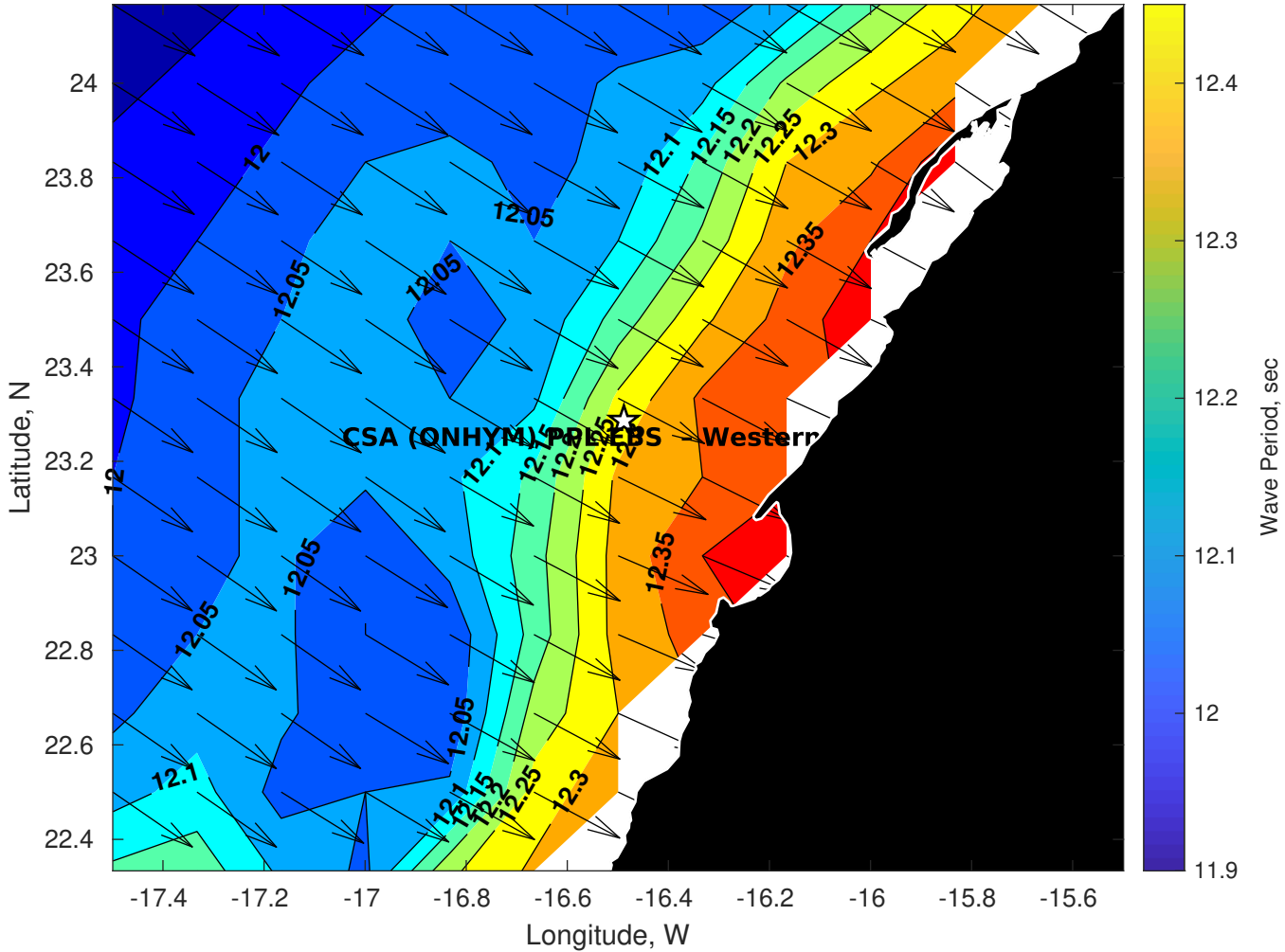
Met Forecast for CSA (ONHYM) PPL EBS - Western Sahara from 02-Jan-2026 12:00:00 to 09-Jan-2026 12:00:00



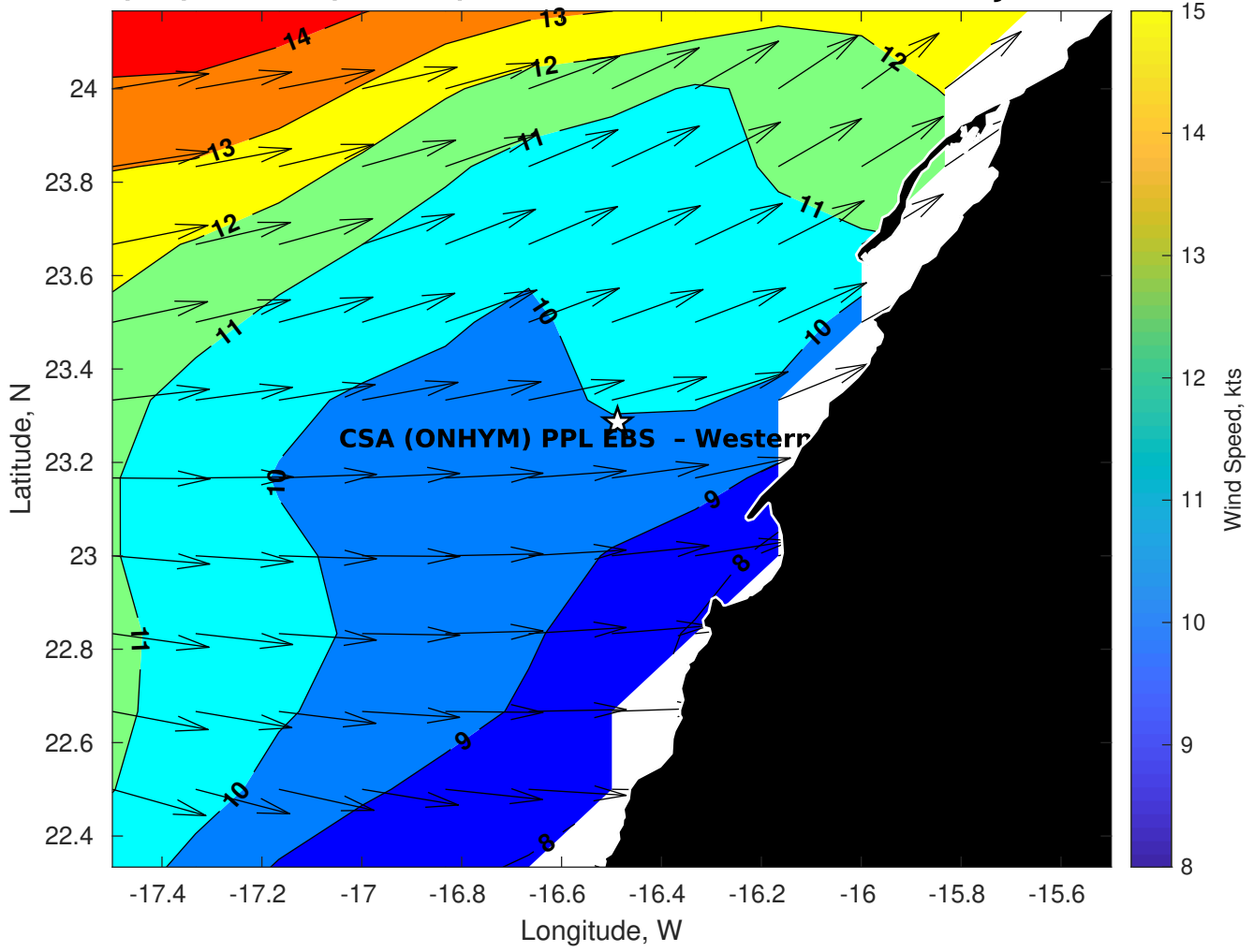
GFS Wave Height (ft) for CSA (ONHYM) PPL EBS - Western Sahara at 02-Jan-2026 21:00:00



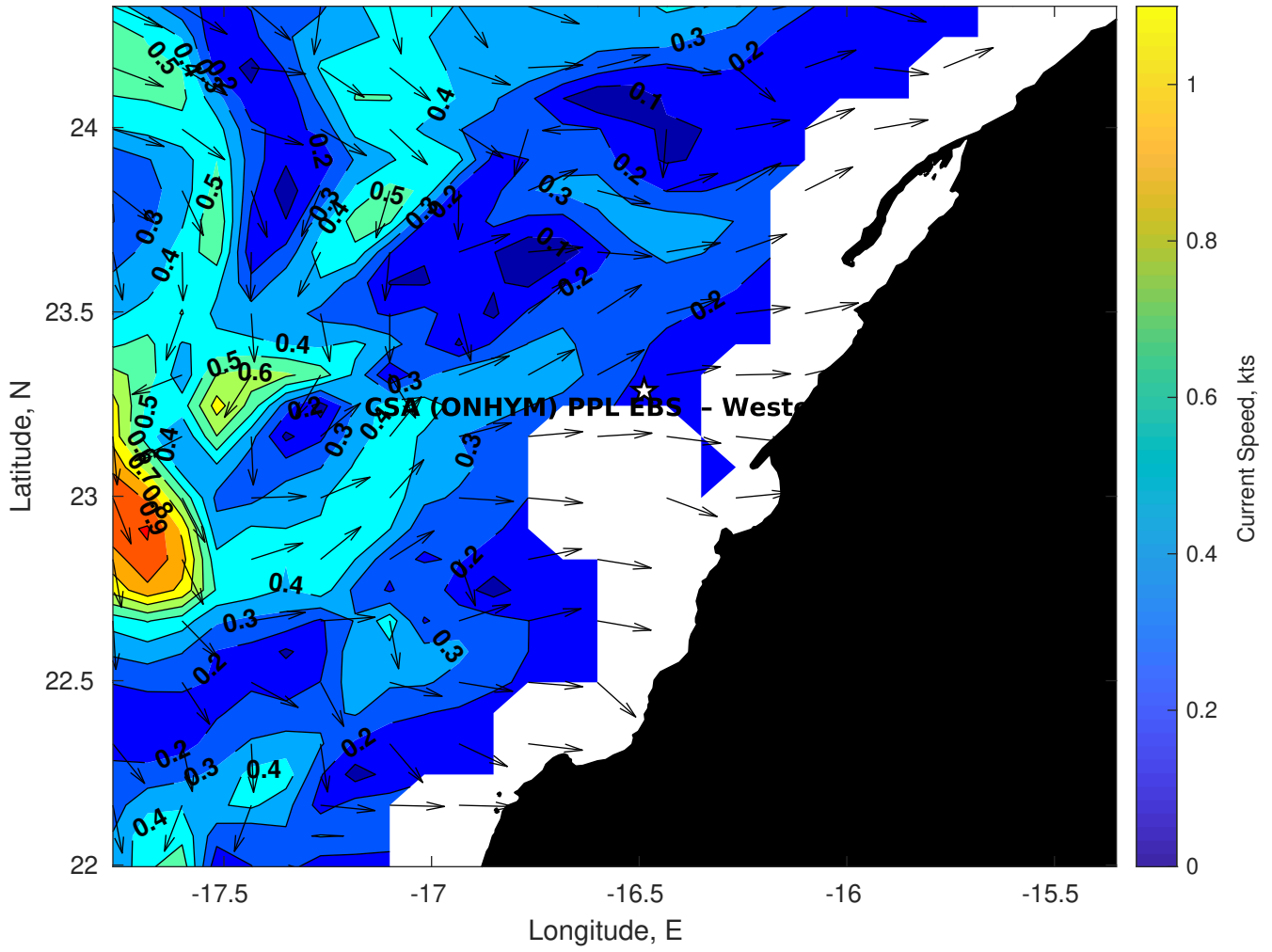
GFS Wave Period (sec) for CSA (ONHYM) PPL EBS - Western Sahara at 02-Jan-2026 21:00:00



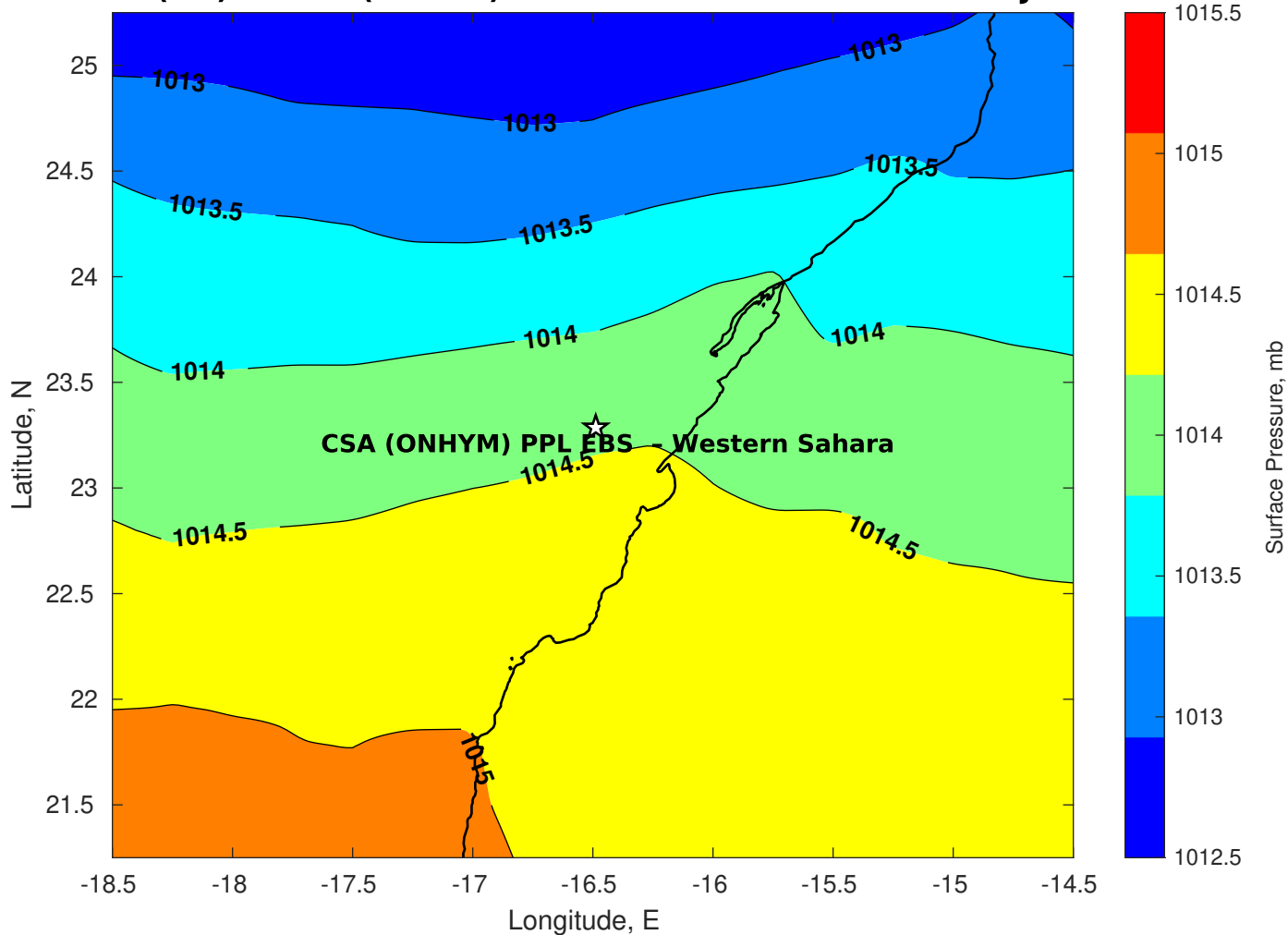
GFS Winds (kts) for CSA (ONHYM) PPL EBS - Western Sahara at 02-Jan-2026 21:00:00



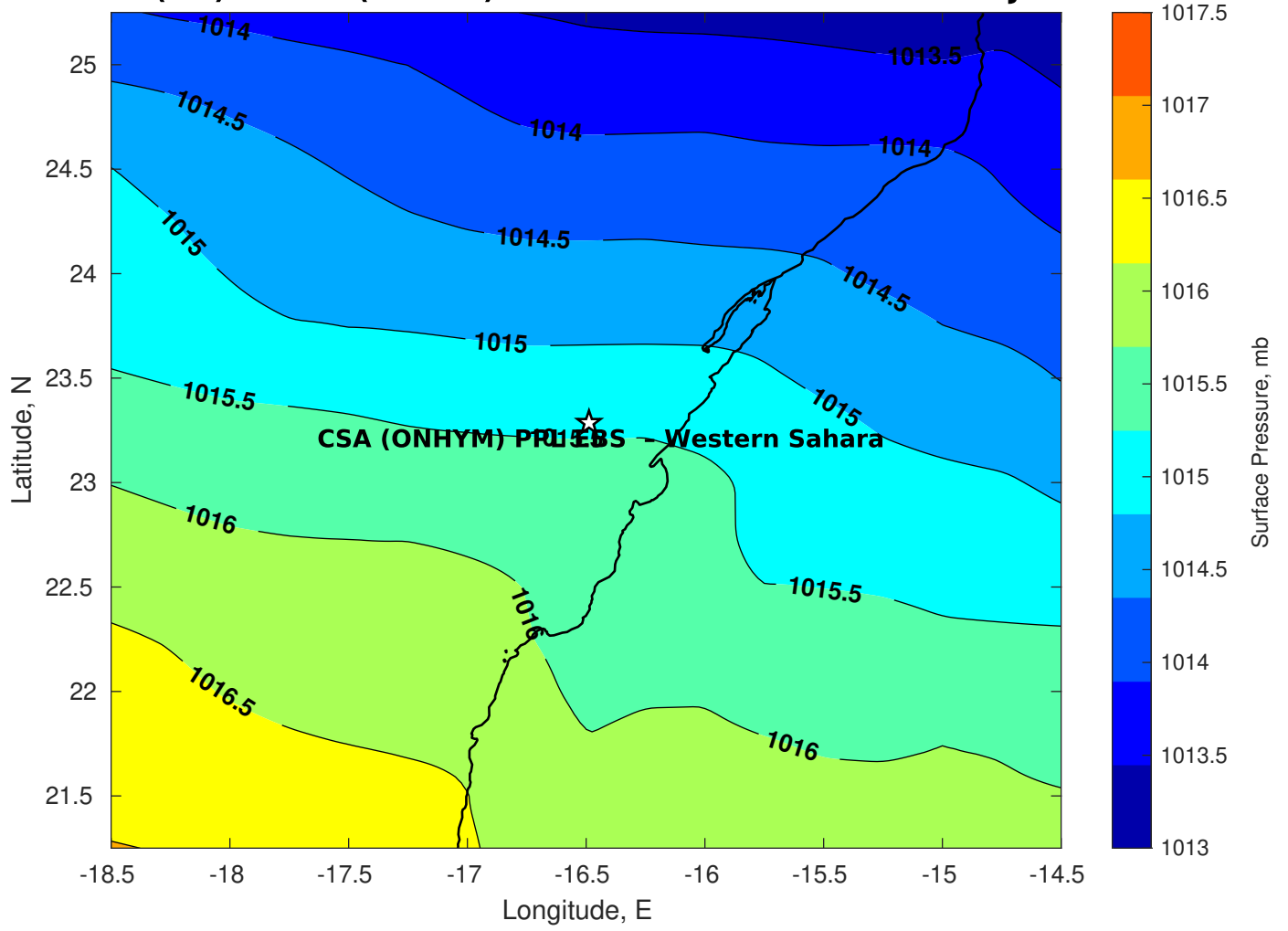
Surface Currents for CSA (ONHYM) PPL EBS - Western Sahara at 02-Jan-2026 00:00:00



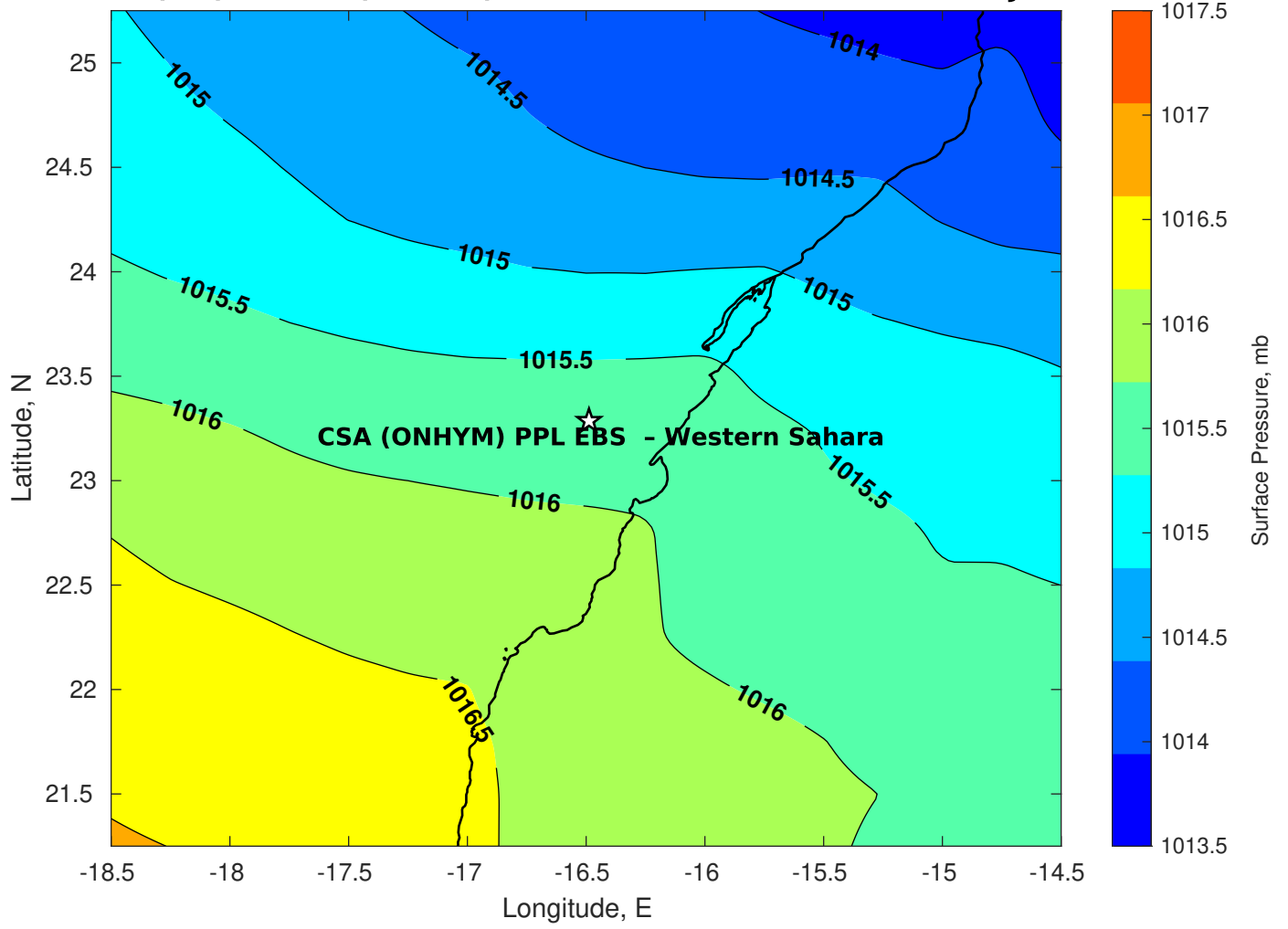
Surface Pressure (mb) for CSA (ONHYM) PPL EBS - Western Sahara at 02-Jan-2026 12:00:00



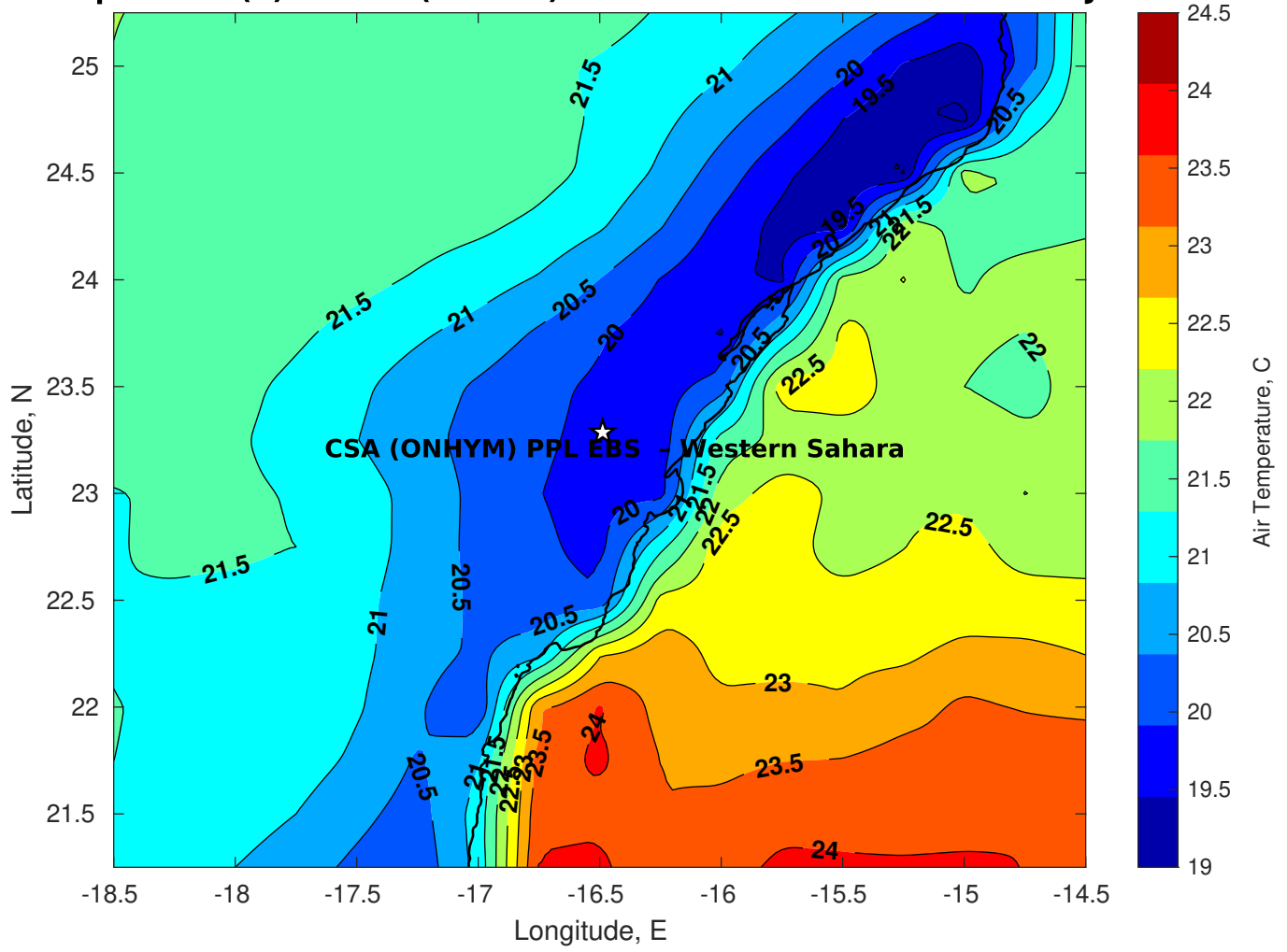
Surface Pressure (mb) for CSA (ONHYM) PPL EBS - Western Sahara at 03-Jan-2026 12:00:00



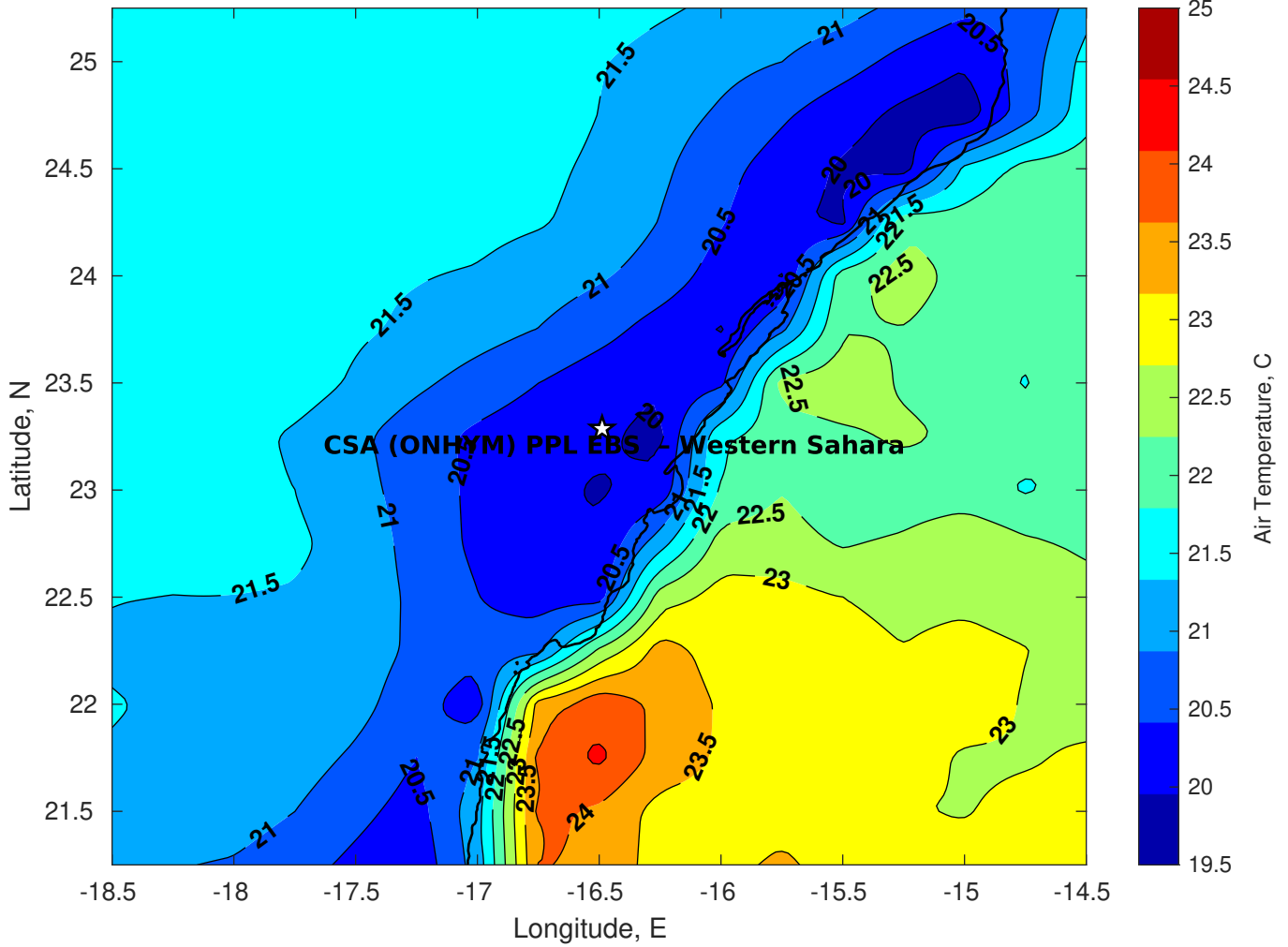
Surface Pressure (mb) for CSA (ONHYM) PPL EBS - Western Sahara at 04-Jan-2026 12:00:00



Air Temperature (C) for CSA (ONHYM) PPL EBS - Western Sahara at 02-Jan-2026



Air Temperature (C) for CSA (ONHYM) PPL EBS - Western Sahara at 02-Jan-2026



Air Temperature (C) for CSA (ONHYM) PPL EBS - Western Sahara at 02-Jan-2026

