
Marine Weather Forecast for CSA (ONHYM) PPL EBS - Ghana

Forecast valid as of 04-Jan-2026 0900 GMT

All times are local.

Today

Winds: N, 5-10 kts.
Waves: NW, 3-4 feet, 16-17 sec.
Currents: E, 1-1.5 kts.

Tonight

Winds: N, 5-10 kts.
Waves: NW, 4-5 feet, 15-16 sec.
Currents: E, 1-1.5 kts.

Monday

Winds: NW, 5-10 kts.
Waves: NW, 4-5 feet, 14-15 sec.
Currents: E, 0.5-1 kts.

Monday Night

Winds: NW, 10-15 kts.
Waves: NW, 4-5 feet, 13-14 sec.
Currents: E, 0.5-1 kts.

Tuesday

Winds: NW, 10-15 kts.
Waves: NW, 4-5 feet, 13-14 sec.
Currents: E, 0.5-1 kts.

Tuesday Night

Winds: NW, 10-15 kts.
Waves: NW, 3-4 feet, 12-13 sec.
Currents: E, 0.5-1 kts.

Wednesday

Winds: NW, 10-15 kts.
Waves: NW, 3-4 feet, 12-13 sec.
Currents: E, 1-1.5 kts.

Wednesday Night

Winds: N, 10-15 kts.
Waves: NW, 3-4 feet, 11-12 sec.
Currents: E, 1-1.5 kts.

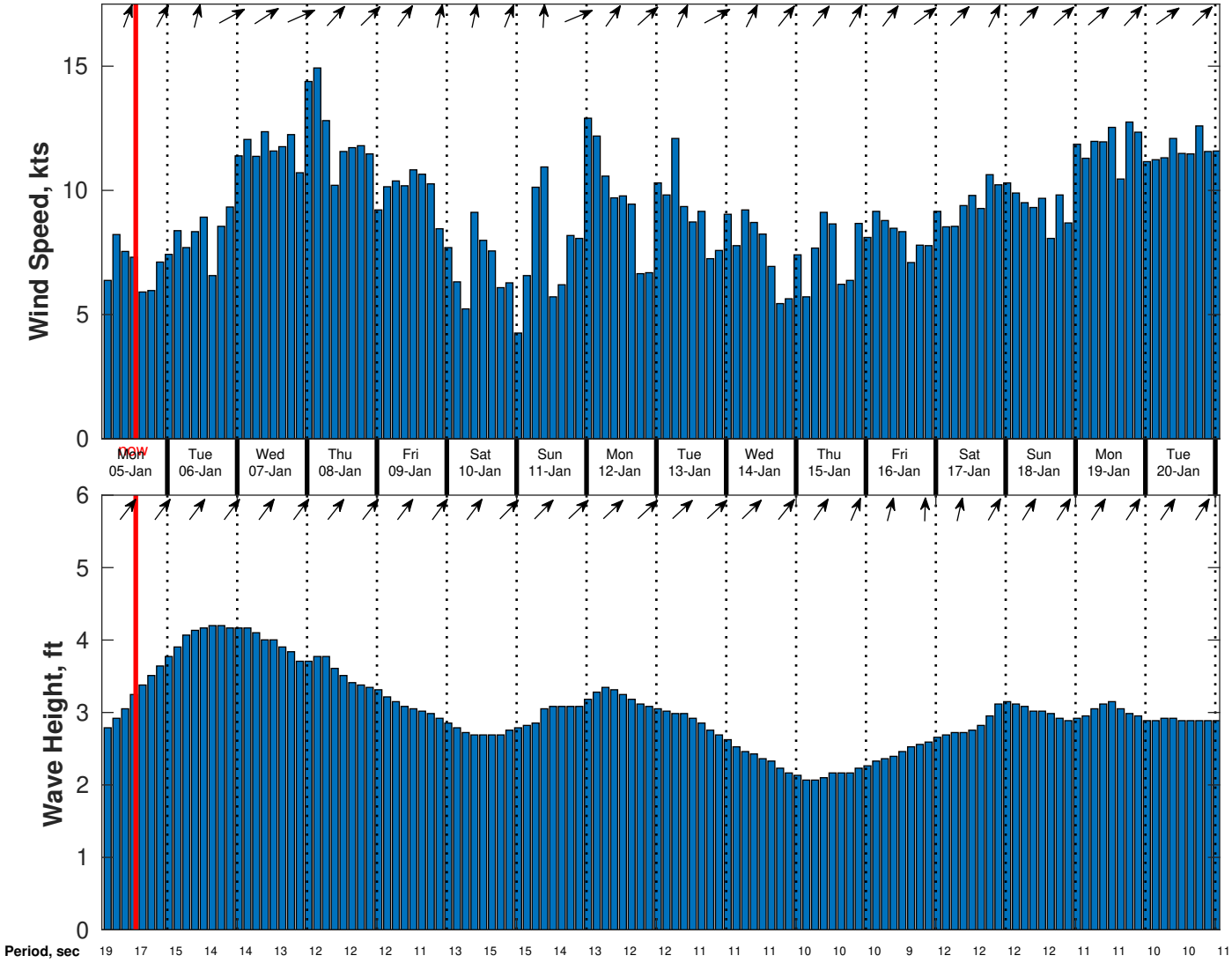
Thursday

Winds: N, 10-15 kts.
Waves: NW, 3-4 feet, 11-12 sec.
Currents: E, 1-1.5 kts.

Thursday Night

Winds: N, 5-10 kts.
Waves: NW, 2-3 feet, 12-13 sec.
Currents: E, 0.5-1 kts.

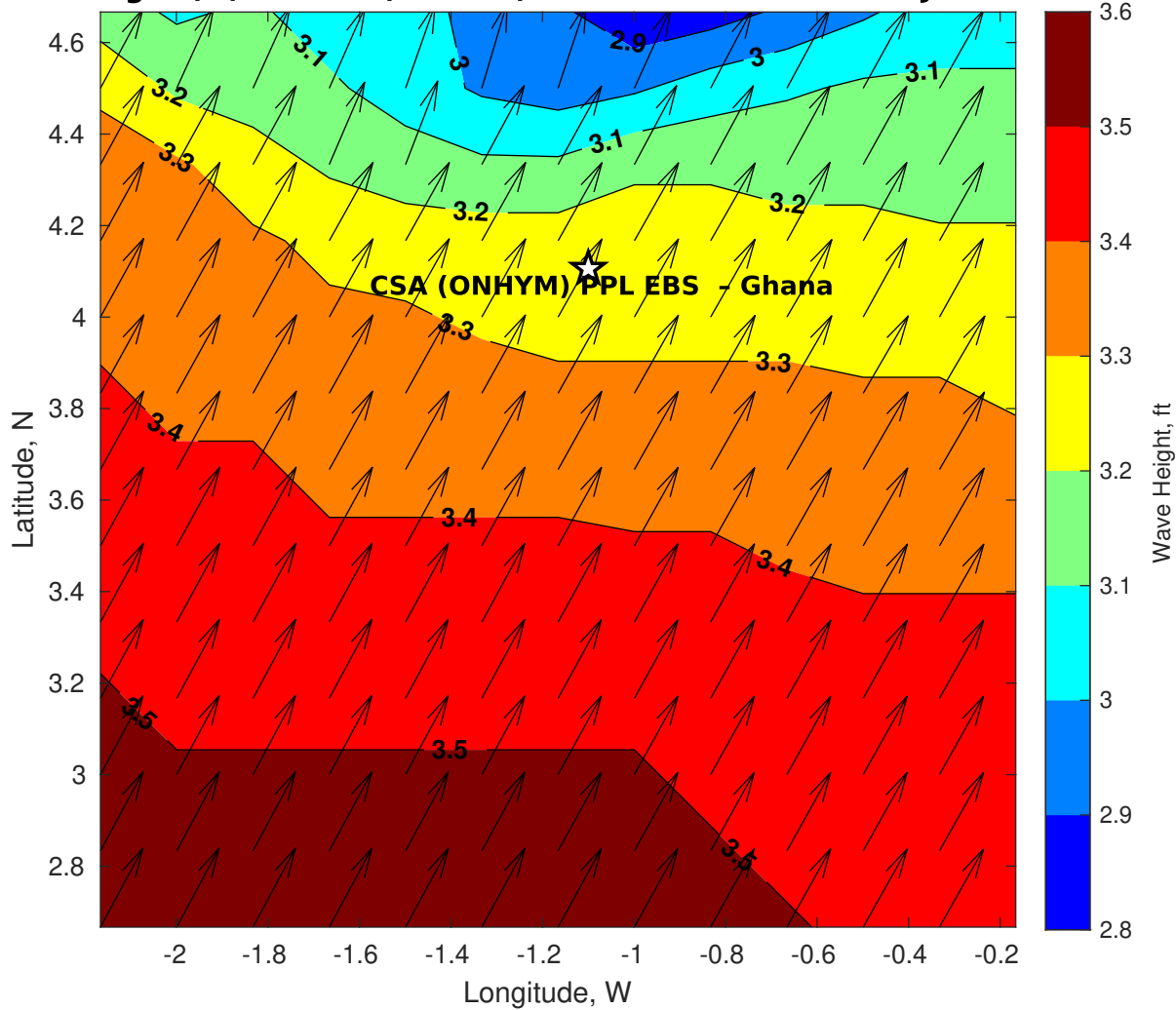
Wind & Wave Forecast for CSA (ONHYM) PPL EBS - Ghana from 04-Jan-2026 02:00:00 to 20-Jan-2026 02:00:00



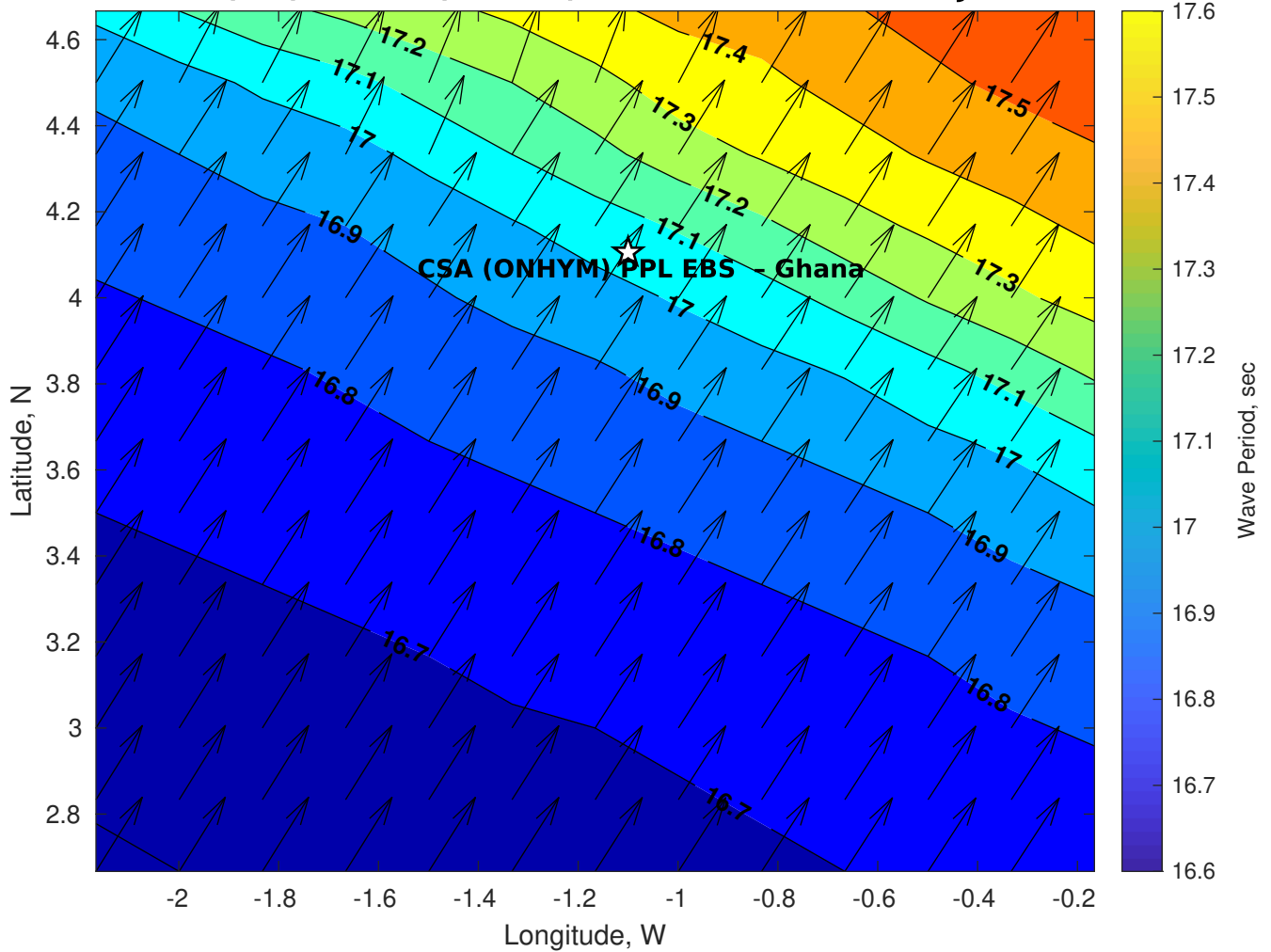
Met Forecast for CSA (ONHYM) PPL EBS - Ghana for 04-Jan-2026 0900 GMT

No Atmospheric Data

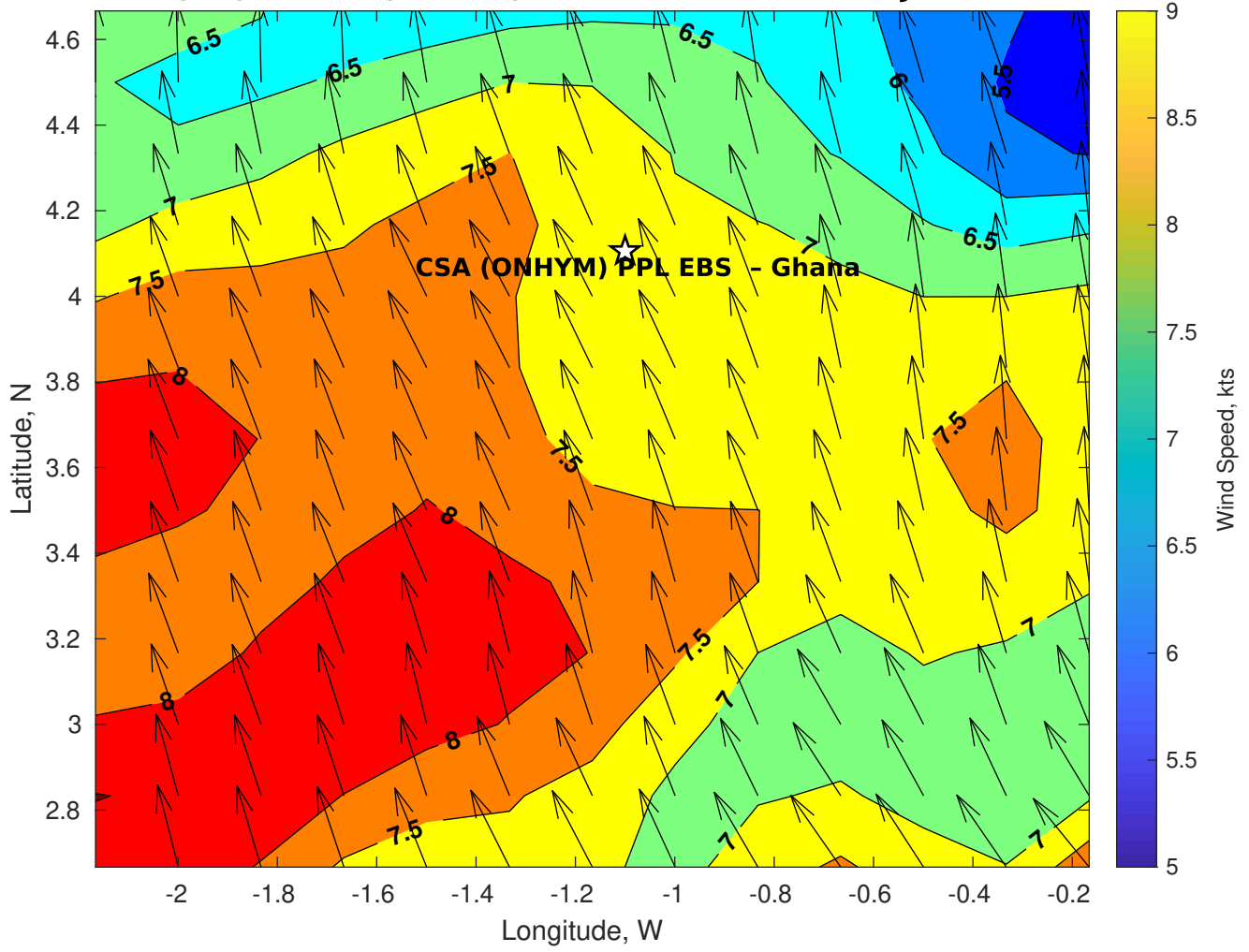
GFS Wave Height (ft) for CSA (ONHYM) PPL EBS - Ghana at 04-Jan-2026 09:00:00



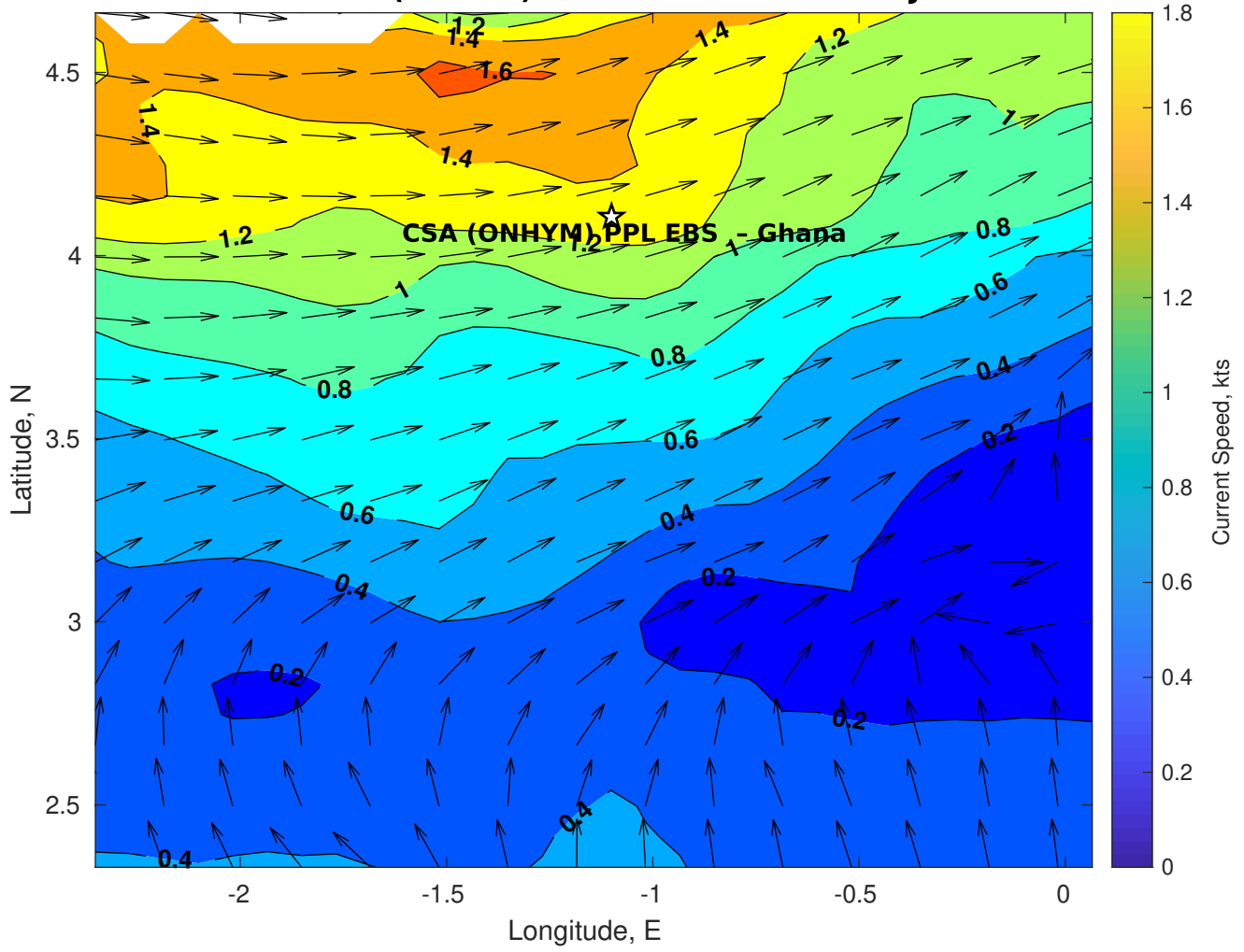
GFS Wave Period (sec) for CSA (ONHYM) PPL EBS - Ghana at 04-Jan-2026 09:00:00



GFS Winds (kts) for CSA (ONHYM) PPL EBS - Ghana at 04-Jan-2026 09:00:00



Surface Currents for CSA (ONHYM) PPL EBS - Ghana at 03-Jan-2026 00:00:00





No Surface Pressure Data



No Surface Pressure Data



No Surface Pressure Data



No Surface Air Temperature Data



No Surface Air Temperature Data



No Surface Air Temperature Data