

GeoPartners Suriname Multibeam Survey - July

Latitude: 8.00 N Longitude: 54.50 W

Weather Days

Wave Height > 6.0 ft Mean: 5.0 days Range: 1.2 - 8.8 days p50:5 days p75:2.5 days p90:1.5 days

Wave Height > 7.0 ft Mean: 1.1 days Range: 0.0 - 2.4 days p50:2.5 days p75:1 days p90:0.5 days

Wave Height > 8.0 ft Mean: 0.2 days Range: 0.0 - 0.8 days p50:30 days p75:30 days p90:1.5 days

Wind Speed > 10.0 knots Mean: 16.6 days Range: 13.2 - 19.9 days p50:16.5 days p75:14.5 days p90:11.5 days

Wind Speed > 15.0 knots Mean: 2.2 days Range: 0.8 - 3.7 days p50:2 days p75:1.5 days p90:1 days

Wind Speed > 20.0 knots Mean: 0.1 days Range: 0.0 - 0.3 days p50:0.5 days p75:0.5 days p90:0.5 days

Working Window

Wave Height < 6.0 ft
A 1 day or longer window will statistically occur 3.2 times per month
A 2 day or longer window will statistically occur 2.7 times per month
A 3 day or longer window will statistically occur 2.4 times per month

Wave Height < 7.0 ft
A 1 day or longer window will statistically occur 2.2 times per month
A 2 day or longer window will statistically occur 1.9 times per month
A 3 day or longer window will statistically occur 1.8 times per month

Wave Height < 8.0 ft
A 1 day or longer window will statistically occur 1.3 times per month
A 2 day or longer window will statistically occur 1.3 times per month
A 3 day or longer window will statistically occur 1.3 times per month

Waves

Mean Height: 4 - 6 ft

The wave heights will occasionally reach 8 - 10 ft, but rarely higher.

Mean Period: 6 - 8 sec

The wave periods will occasionally reach 10 - 12 sec, but rarely longer.

Principle Direction, from: ENE

WindSea/Swell: 2% / 98%

Winds

Mean Speed: 10 - 15 kts

The winds will occasionally reach 15 - 20 kts, but rarely greater.

Principle Direction, from: E

Currents

Mean Speed: 0.75-1.00 kts

The currents will occasionally reach 2.25-2.50 kts, but rarely greater.

Principle Direction, to: NW

Weather Days

Current Speed > 1.0 knots Mean: 15.5 days Range: 8.4 - 22.6 days p50:16 days p75:10 days p90:6 days

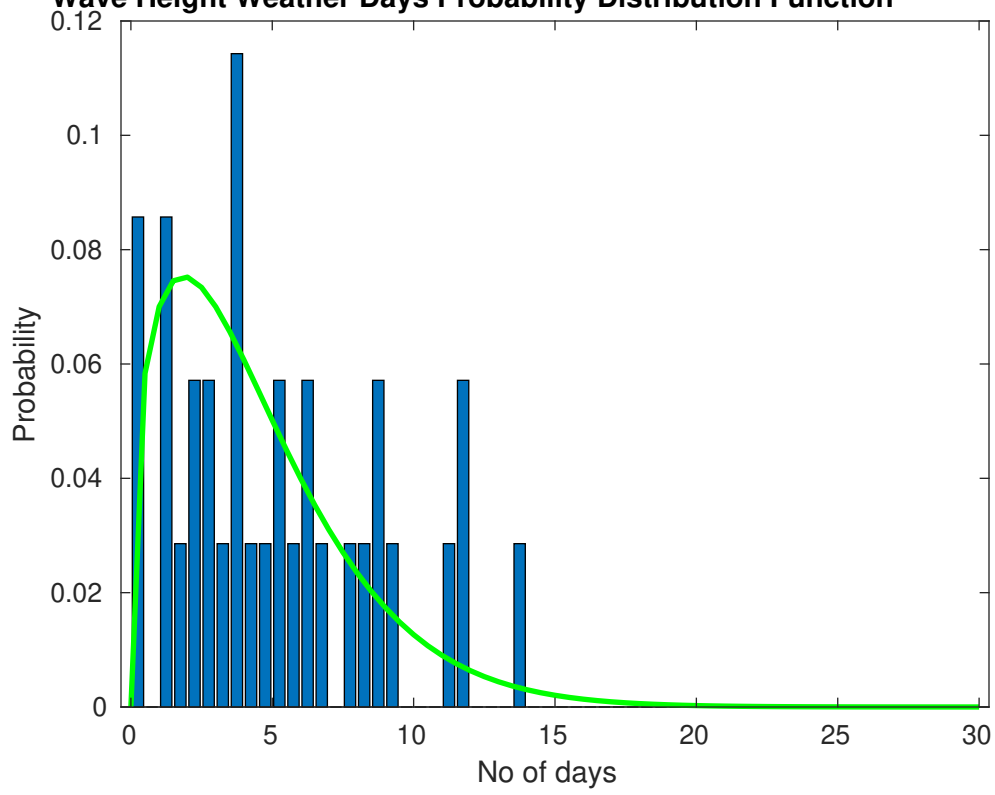
Current Speed > 1.5 knots Mean: 8.2 days Range: 0.7 - 15.8 days p50:7 days p75:3 days p90:2 days

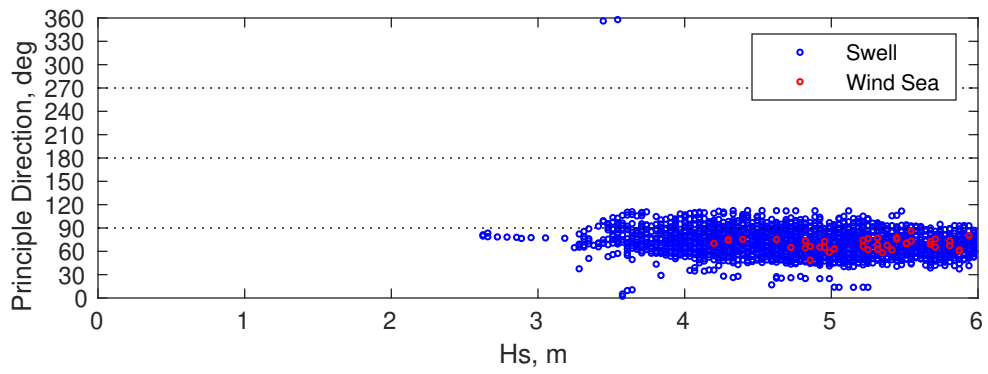
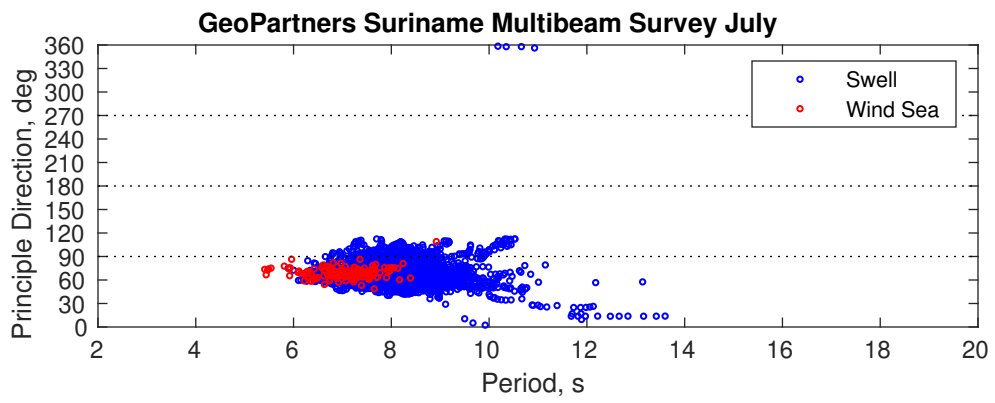
Current Speed > 2.0 knots Mean: 3.9 days Range: 0.0 - 9.4 days p50:2 days p75:1 days p90:1 days

Severe Storms

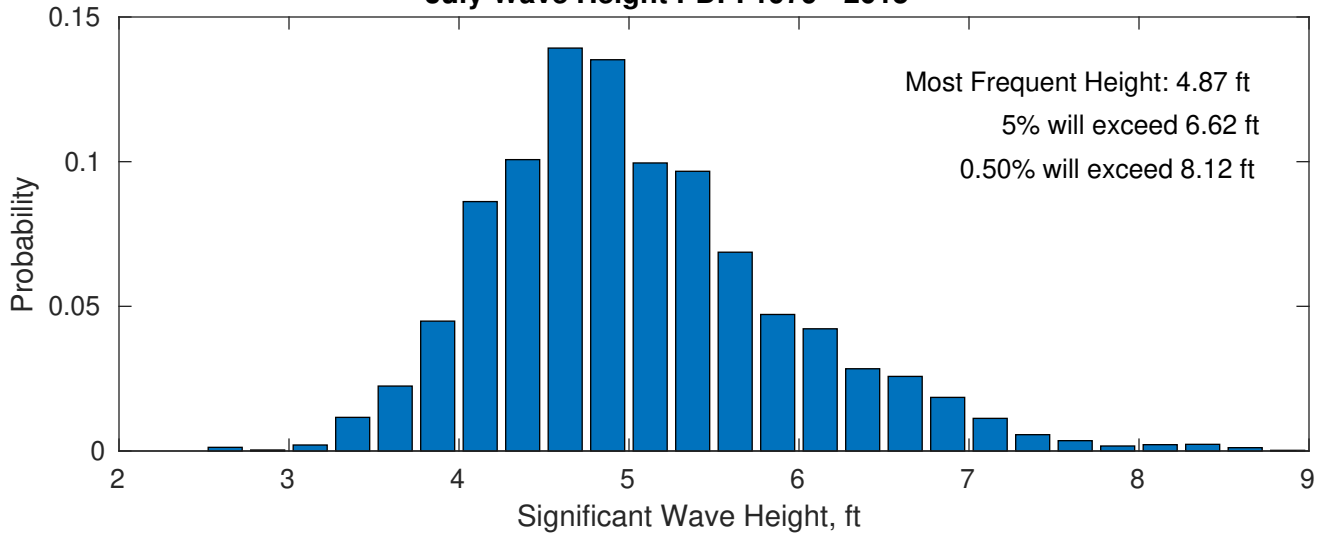
Severe storms with gale force winds and extreme waves are not expected during this month.

Wave Height Weather Days Probability Distribution Function

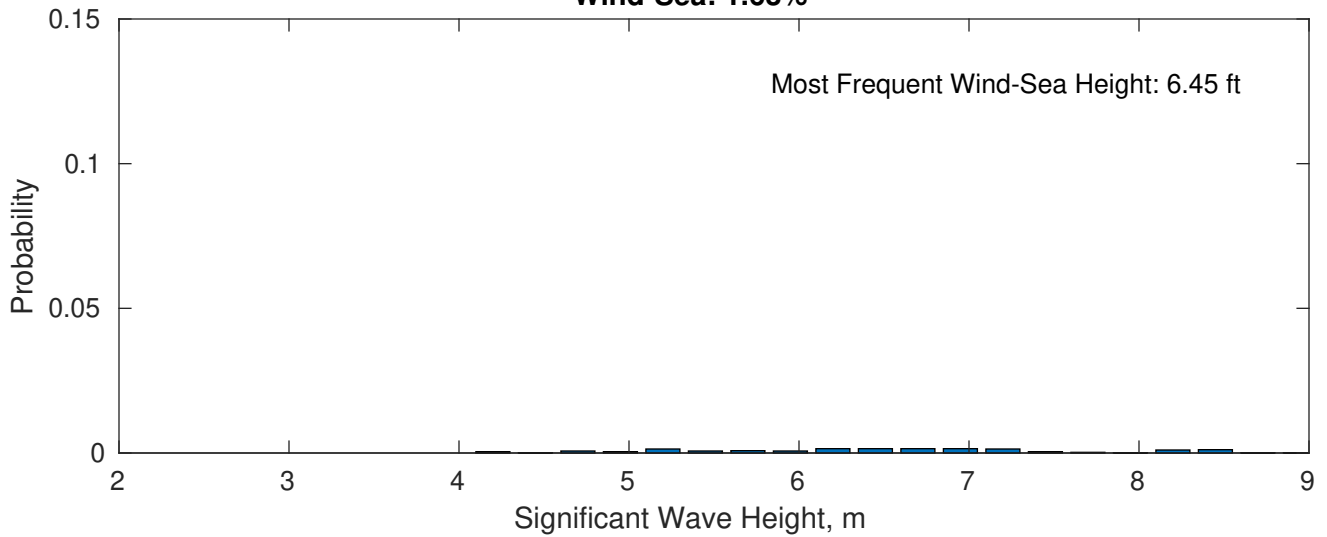




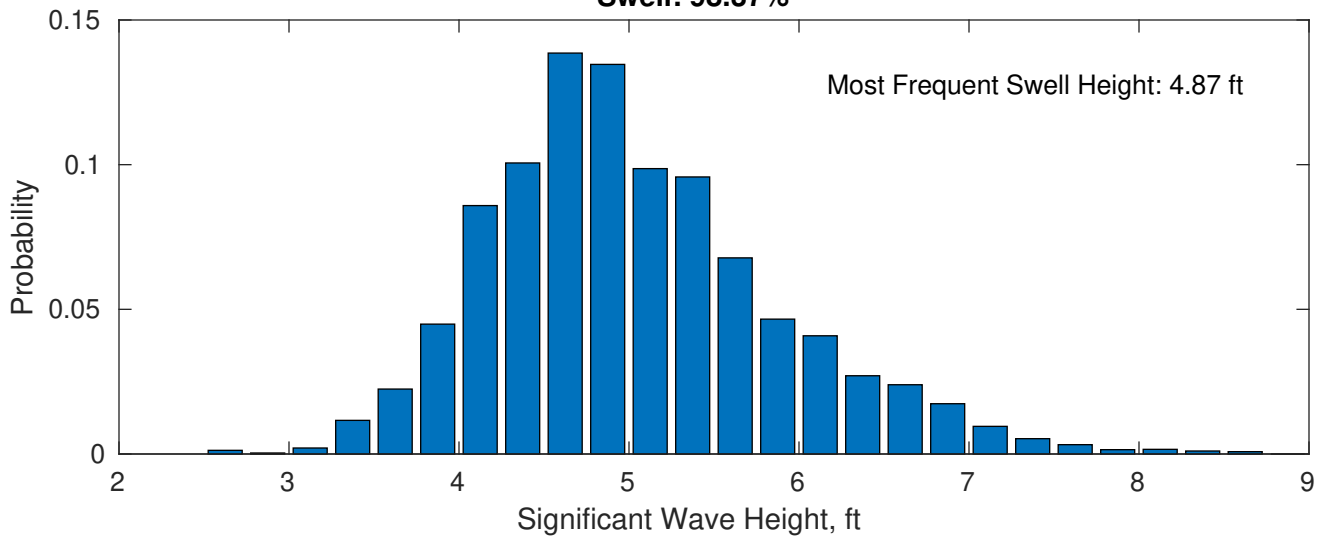
July Wave Height PDF: 1979 - 2015



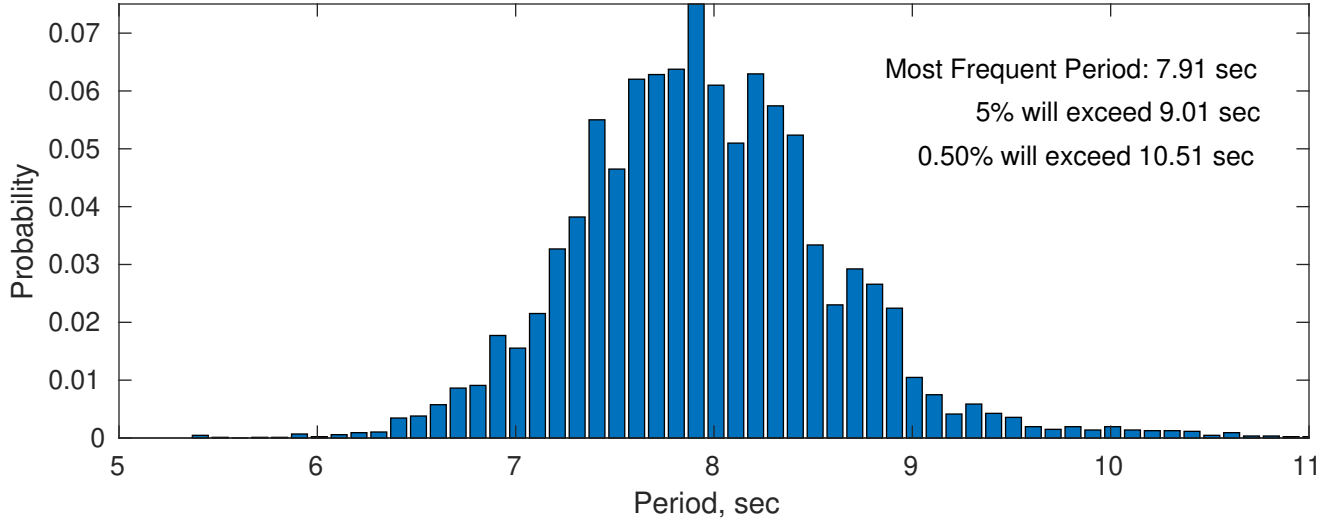
Wind-Sea: 1.63%



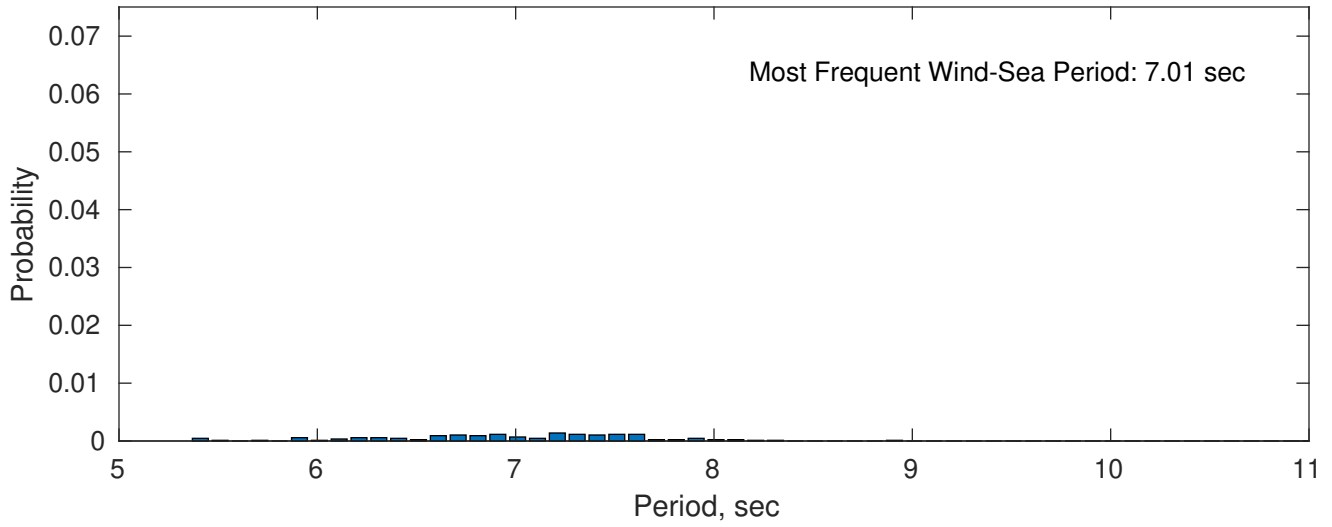
Swell: 98.37%



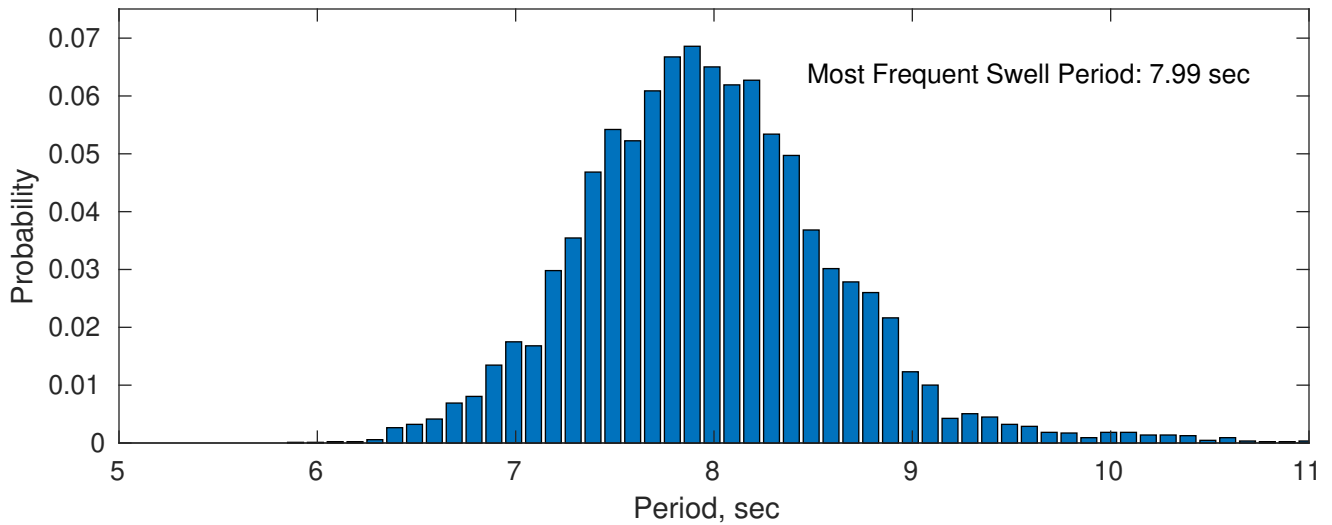
July Peak Wave Period PDF: 1979 - 2015



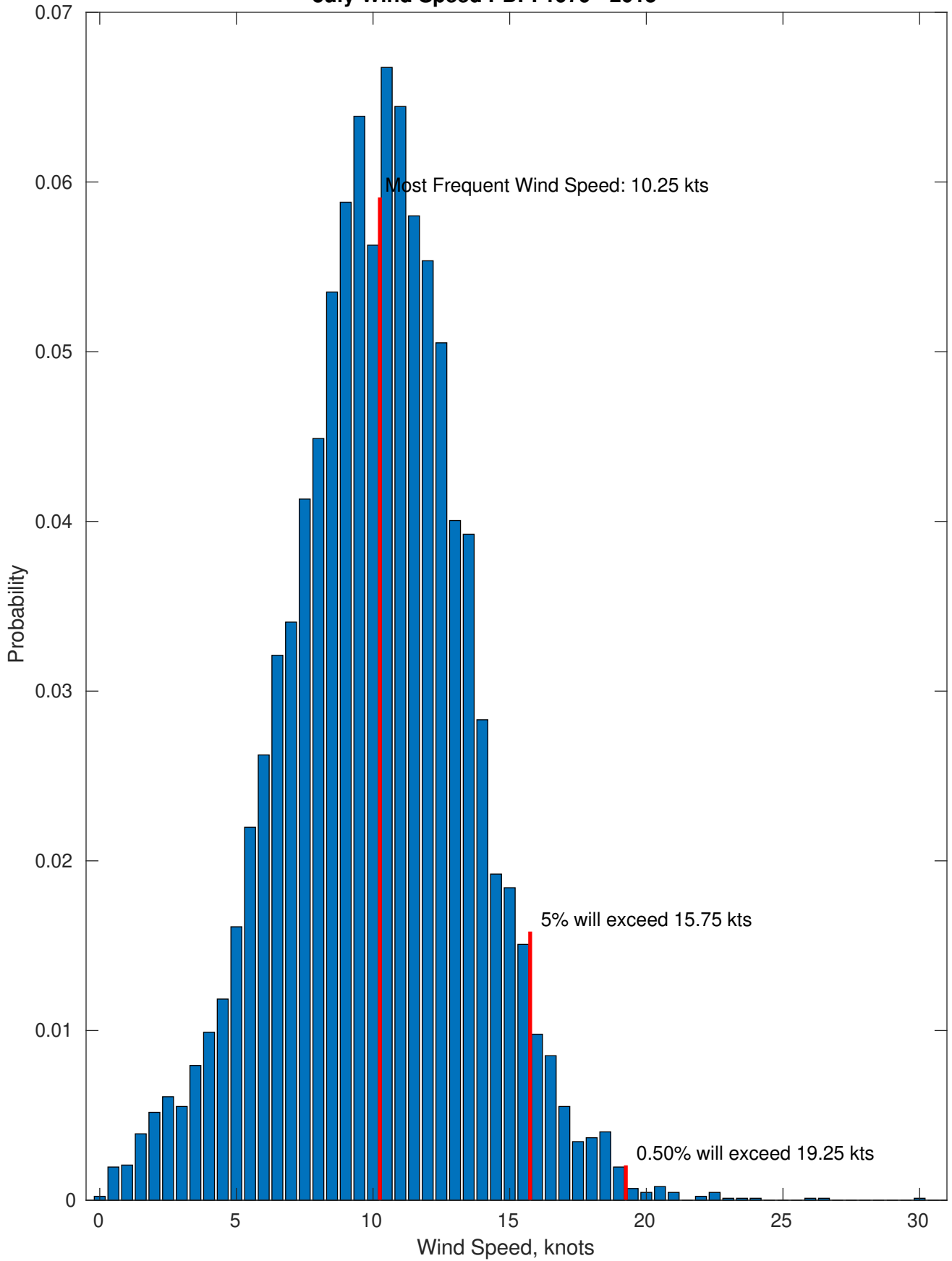
Wind-Sea: 1.63%



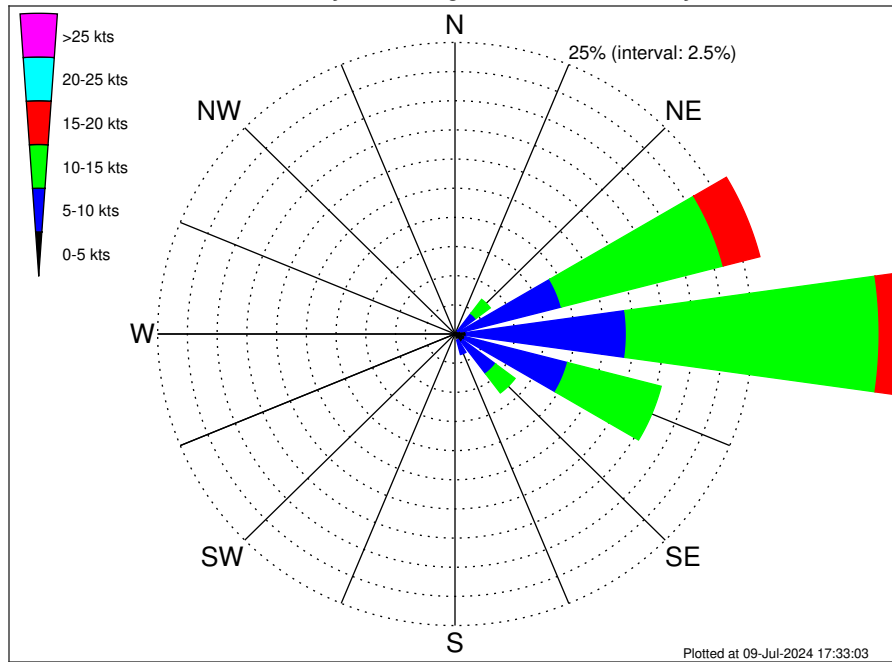
Swell: 98.37%



July Wind Speed PDF: 1979 - 2015



GeoPartners Suriname Multibeam Survey Climatological Wind Rose for July: 1979 - 2015



Joint Frequency Distribution Table

	N	NNE	NE	ENE	E	ESE	SE	SSE	S	SSW	SW	WSW	W	WNW	NW	NNW	Total
calm	0.02	•	0.01	0.01	0.05	0.02	0.01	0.01	0.02	•	0.01	0.01	•	0.01	0.02	•	0.22
0 - 5 kts	0.15	0.30	0.33	0.54	0.91	0.86	0.83	0.54	0.23	0.14	0.09	0.03	0.06	0.06	0.07	0.10	5.25
5 - 10 kts	0.18	0.39	1.86	8.69	13.47	8.90	3.43	1.27	0.54	0.22	0.12	0.07	•	0.05	0.02	0.09	39.29
10 - 15 kts	0.02	0.08	1.51	14.05	21.25	8.13	2.06	0.48	0.09	0.08	•	0.03	•	•	0.02	0.01	47.82
15 - 20 kts	•	0.01	0.09	3.19	3.10	0.48	0.18	0.05	0.01	•	•	•	•	•	•	•	7.11
20 - 25 kts	•	•	•	0.17	0.10	•	•	•	•	•	•	•	•	•	•	•	0.28
25 - 30 kts	•	•	•	0.01	0.01	•	•	•	•	•	•	•	•	•	•	•	0.02
30 - 35 kts	•	•	•	•	0.01	•	•	•	•	•	•	•	•	•	•	•	0.01
35 - 40 kts	•	•	•	•	•	•	•	•	•	•	•	•	•	•	•	•	•
40 - 45 kts	•	•	•	•	•	•	•	•	•	•	•	•	•	•	•	•	•
45 - 50 kts	•	•	•	•	•	•	•	•	•	•	•	•	•	•	•	•	•
Total	0.38	0.78	3.81	26.67	38.89	18.39	6.51	2.35	0.90	0.44	0.22	0.15	0.06	0.12	0.14	0.21	100.00