

Long Island Wind - August

Latitude: 40.90 N Longitude: 71.00 W

Weather Days

Wave Height > 6.0 ft Mean: 2.7 days Range: 0.7 - 4.7 days p50:3 days p75:1.5 days p90:0.5 days
Wave Height > 7.0 ft Mean: 1.4 days Range: 0.0 - 3.0 days p50:1.5 days p75:0.5 days p90:0.5 days
Wave Height > 8.0 ft Mean: 0.7 days Range: 0.0 - 1.9 days p50:30 days p75:1 days p90:0.5 days
Wind Speed > 15.0 knots Mean: 7.8 days Range: 5.9 - 9.7 days p50:8 days p75:7.5 days p90:5.5 days
Wind Speed > 20.0 knots Mean: 2.2 days Range: 1.0 - 3.4 days p50:3 days p75:1.5 days p90:1 days
Wind Speed > 25.0 knots Mean: 0.5 days Range: 0.0 - 1.0 days p50:0.5 days p75:0.5 days p90:0.5 days

Working Window

Wave Height < 6.0 ft	A 1 day or longer window will statistically occur 2.9 times per month A 2 day or longer window will statistically occur 2.5 times per month A 3 day or longer window will statistically occur 2.2 times per month
Wave Height < 7.0 ft	A 1 day or longer window will statistically occur 2.3 times per month A 2 day or longer window will statistically occur 2.1 times per month A 3 day or longer window will statistically occur 1.9 times per month
Wave Height < 8.0 ft	A 1 day or longer window will statistically occur 1.5 times per month A 2 day or longer window will statistically occur 1.4 times per month A 3 day or longer window will statistically occur 1.4 times per month

Waves

Mean Height: 2 - 4 ft
The wave heights will occasionally reach 10 - 12 ft, but rarely higher.
Mean Period: 6 - 8 sec
The wave periods will occasionally reach 14 - 16 sec, but rarely longer.
Principle Direction, from: SE
WindSea/Swell: 21% / 79%

Winds

Mean Speed: 10 - 15 kts
The winds will occasionally reach 25 - 30 kts, but rarely greater.
Principle Direction, from: SW

Currents

Mean Speed: 0.25-0.50 kts
The currents will occasionally reach 0.75-1.00 kts, but rarely greater.
Principle Direction, to: E

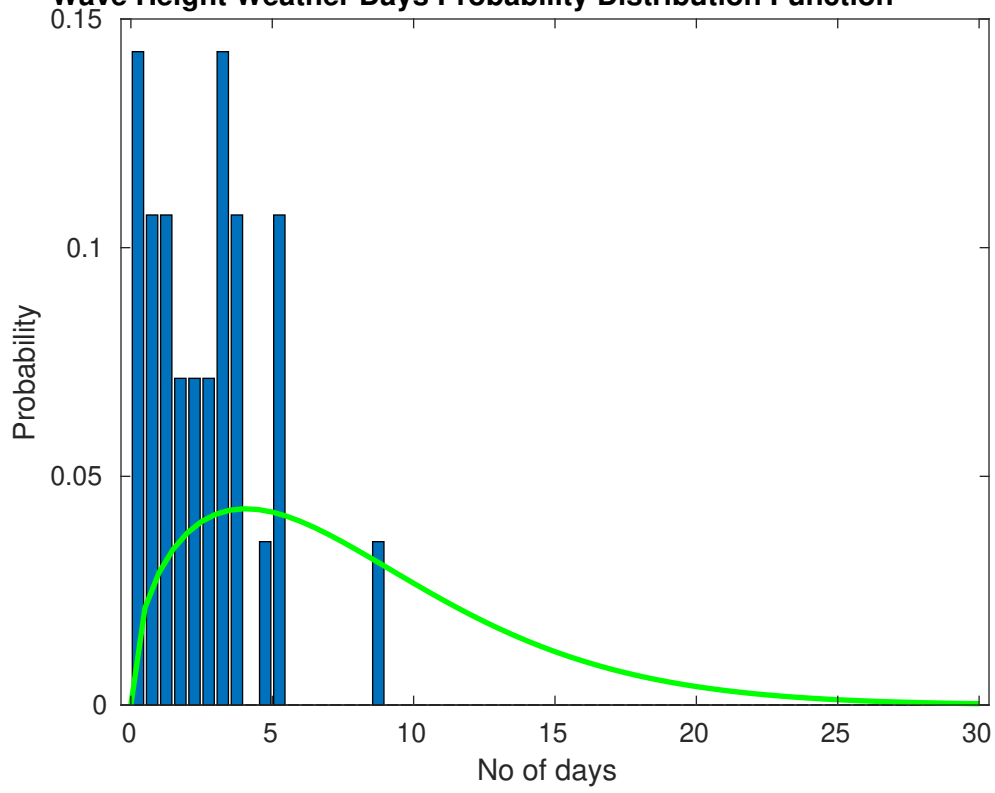
Weather Days

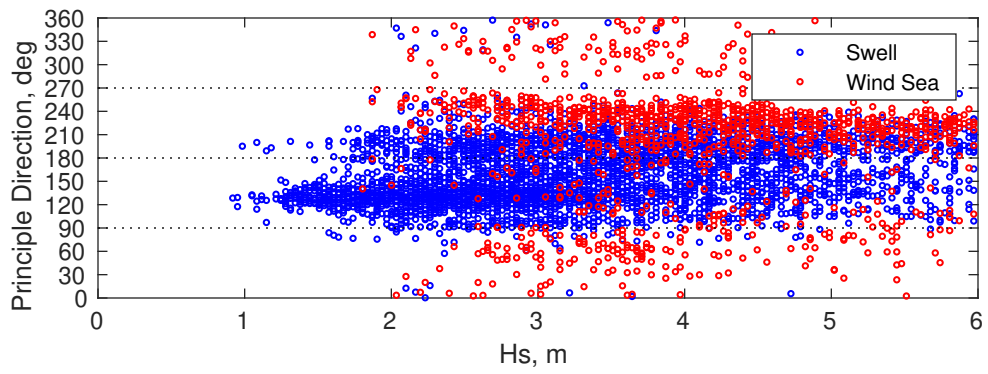
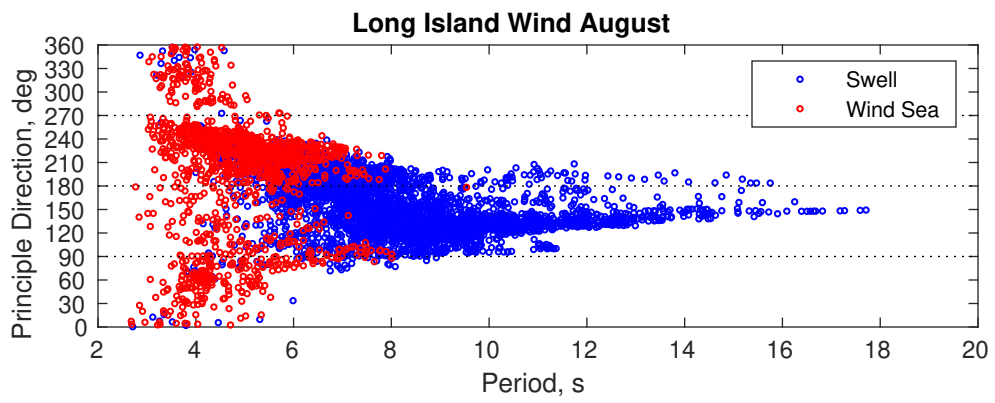
Current Speed > 1.0 knots Mean: 0.1 days Range: 0.0 - 0.4 days p50:1 days p75:1 days p90:1 days
Current Speed > 1.5 knots Mean: 0.1 days Range: 0.0 - 0.3 days p50:1 days p75:1 days p90:1 days
Current Speed > 2.0 knots Mean: 0.0 days Range: 0.0 - 0.0 days p50:1 days p75:1 days p90:1 days

Severe Storms

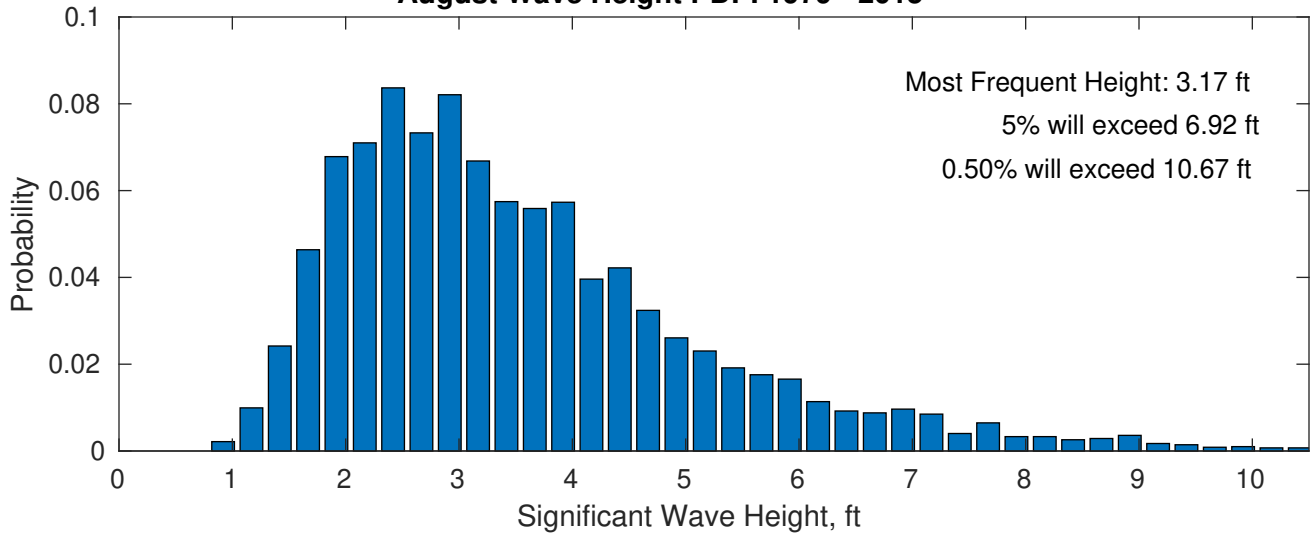
Severe storms with gale force winds and extreme waves are not expected during this month.

Wave Height Weather Days Probability Distribution Function

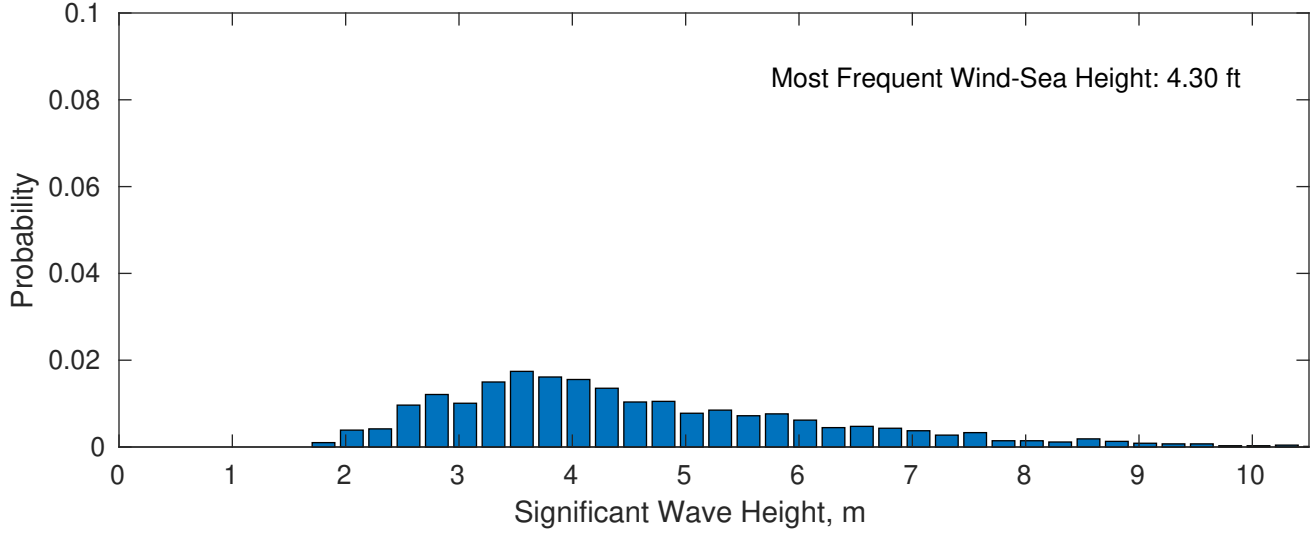




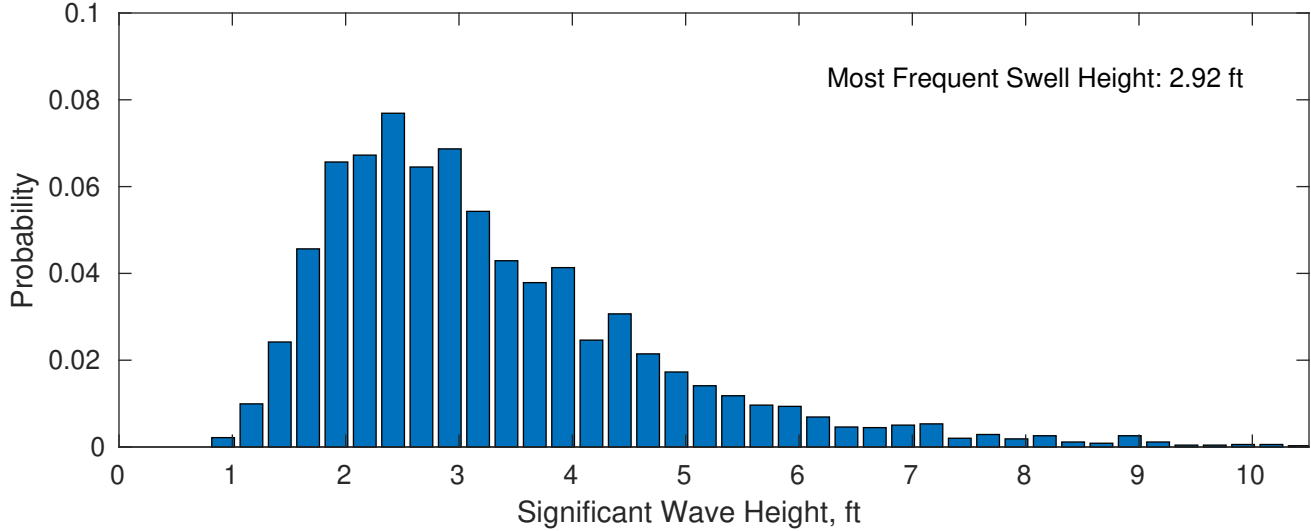
August Wave Height PDF: 1979 - 2015



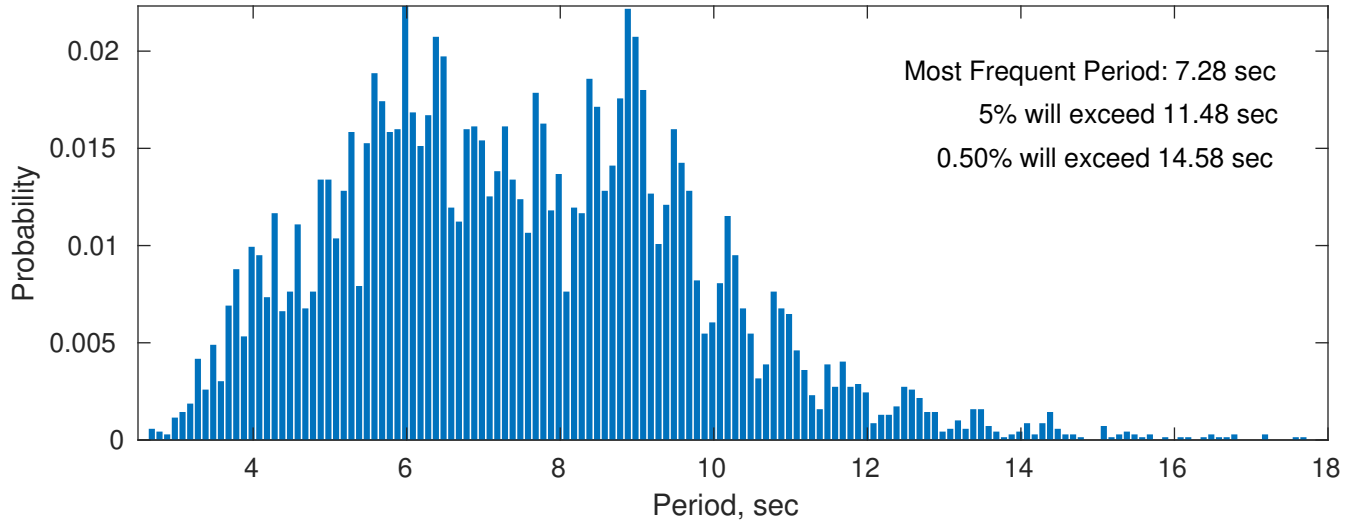
Wind-Sea: 21.11%



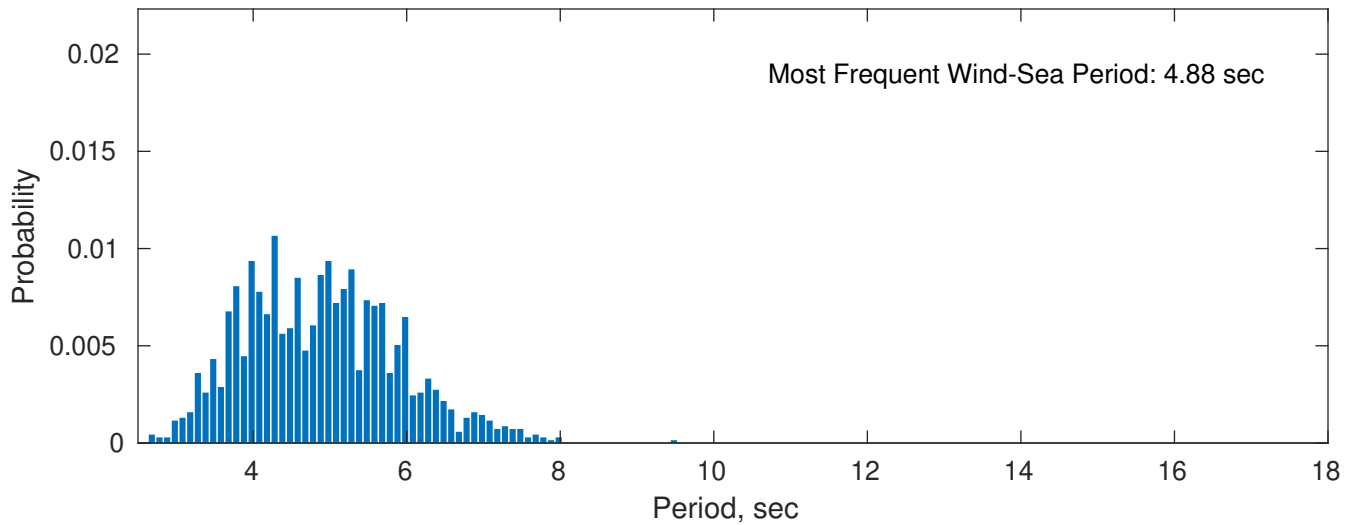
Swell: 78.89%



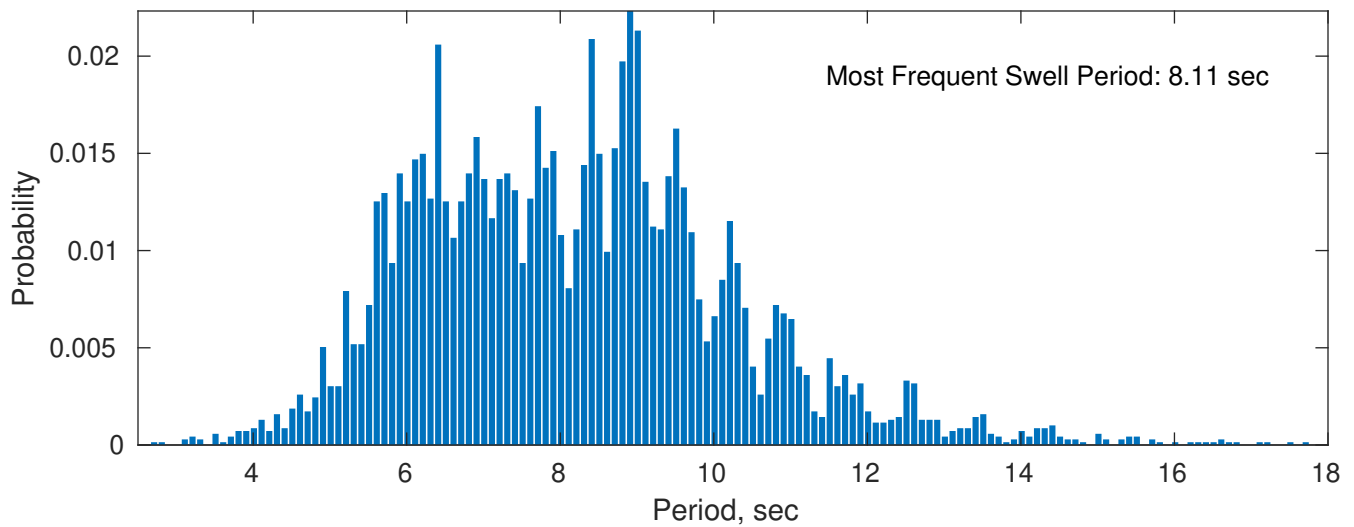
August Peak Wave Period PDF: 1979 - 2015



Wind-Sea: 21.11%

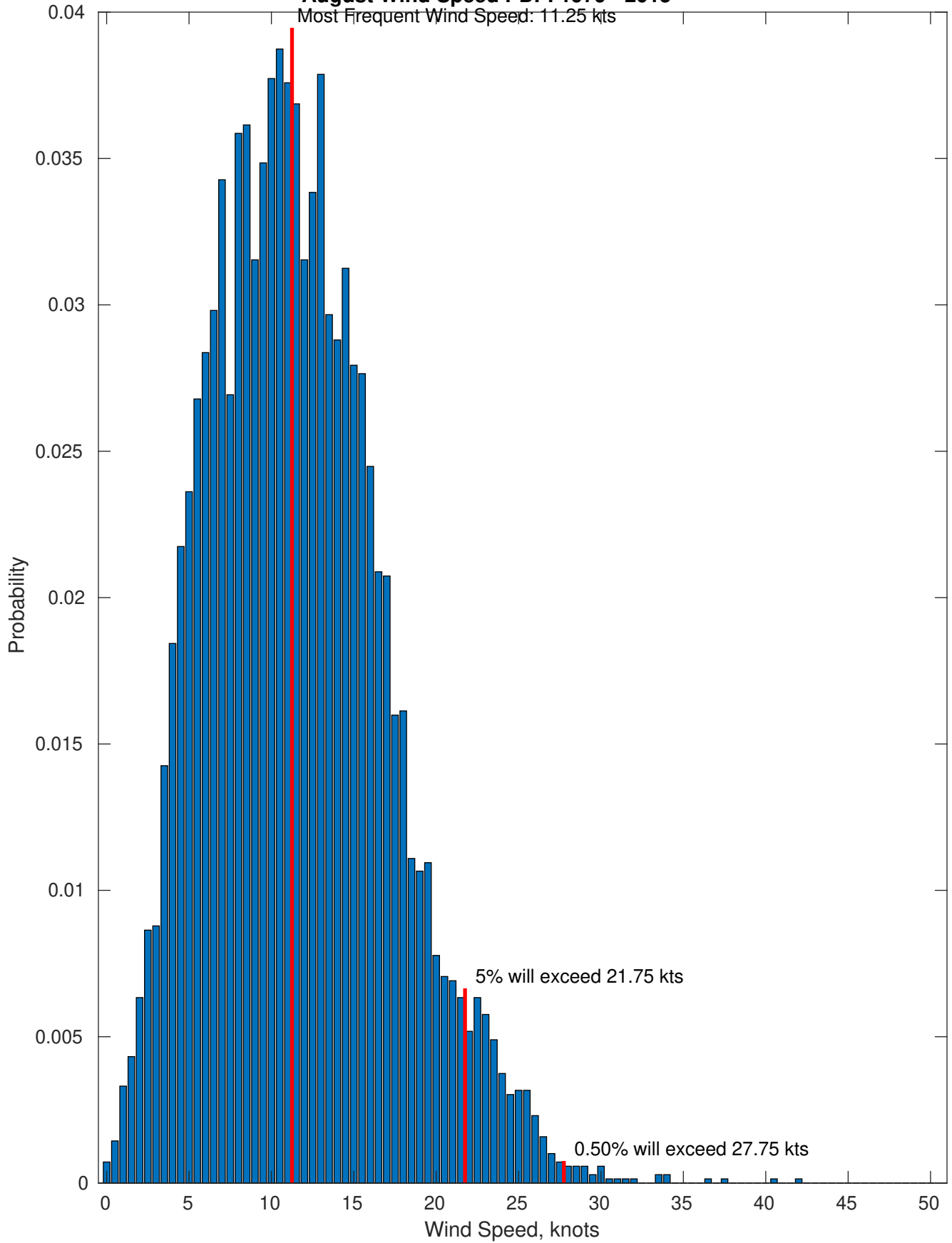


Swell: 78.89%

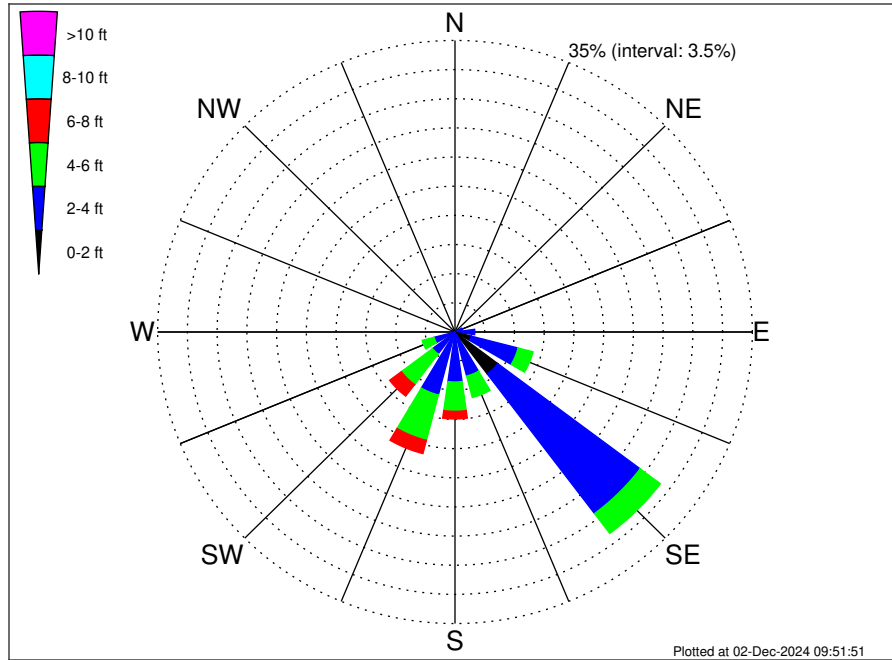


August Wind Speed PDF: 1979 - 2015

Most Frequent Wind Speed: 11.25 kts



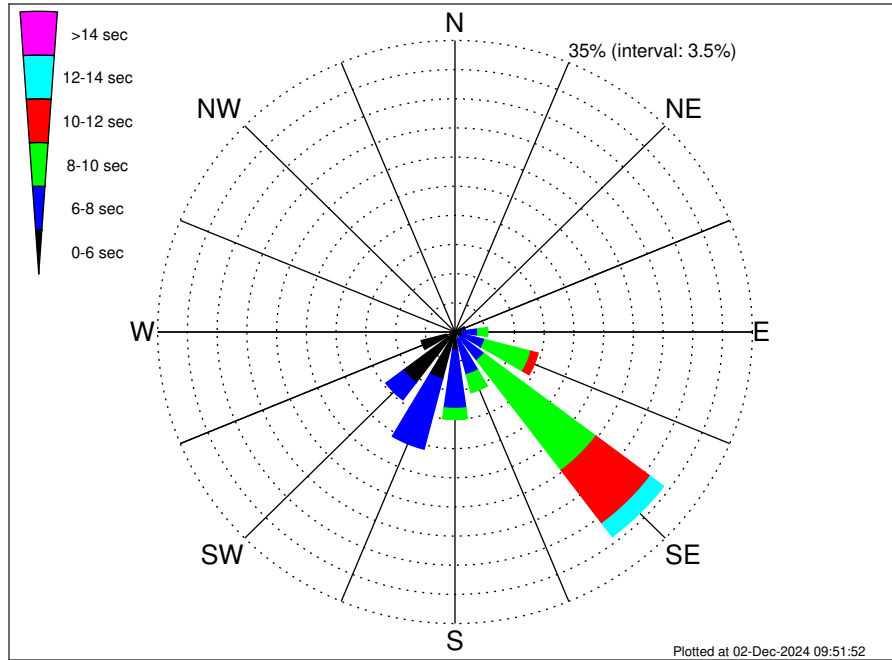
Long Island Wind Climatological WaveHeight Rose for August: 1979 - 2015



Joint Frequency Distribution Table

	N	NNE	NE	ENE	E	ESE	SE	SSE	S	SSW	SW	WSW	W	WNW	NW	NNW	Total
calm	•	•	•	•	•	0.01	0.03	•	•	0.01	•	•	•	•	•	•	0.06
1 - 2 ft	•	•	•	0.04	0.10	1.97	6.28	0.42	0.36	0.49	0.06	0.03	0.01	•	•	0.01	9.78
2 - 4 ft	0.42	0.23	0.42	0.88	2.23	5.69	20.98	5.04	5.65	7.30	3.25	2.52	0.19	0.20	0.50	0.35	55.85
4 - 6 ft	0.06	0.09	0.17	0.30	0.82	1.81	2.98	2.66	3.51	5.63	4.59	1.44	0.10	0.22	0.07	0.12	24.58
6 - 8 ft	0.04	0.04	0.13	0.14	0.58	0.45	0.66	0.48	0.92	1.64	1.73	0.19	0.07	0.01	•	•	7.09
8 - 10 ft	•	0.01	•	•	0.30	0.17	0.06	0.26	0.37	0.17	0.52	0.03	•	•	•	•	1.90
10 - 12 ft	•	•	•	•	0.04	•	0.03	0.13	0.16	0.14	0.04	•	•	•	•	•	0.55
12 - 14 ft	•	•	•	•	•	•	•	0.04	0.07	0.04	•	•	•	•	•	•	0.16
14 - 16 ft	•	•	•	•	•	•	•	•	•	•	•	•	•	•	•	•	•
16 - 18 ft	•	•	•	•	•	•	•	•	0.01	•	•	•	•	•	•	•	0.01
> 18 ft	•	•	•	•	•	•	•	•	0.03	•	•	•	•	•	•	•	0.03
Total	0.52	0.37	0.72	1.37	4.08	10.11	31.02	9.03	11.09	15.44	10.20	4.21	0.37	0.43	0.58	0.48	100.00

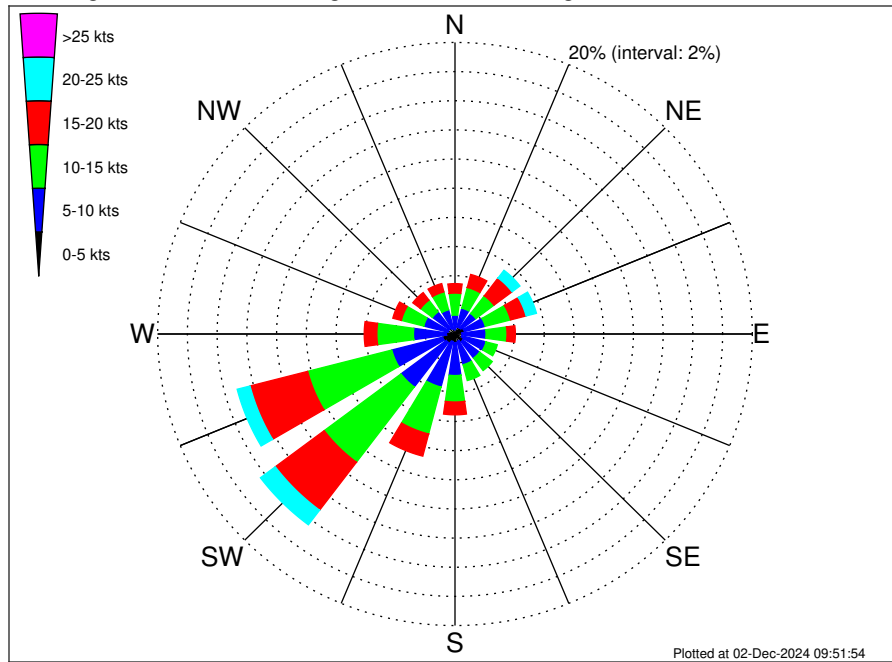
Long Island Wind Climatological WavePeriod Rose for August: 1979 - 2015



Joint Frequency Distribution Table

	N	NNE	NE	ENE	E	ESE	SE	SSE	S	SSW	SW	WSW	W	WNW	NW	NNW	Total
calm	•	•	•	•	•	•	•	•	•	•	•	•	•	•	•	•	•
1 - 2 sec	•	•	•	•	•	•	•	•	•	•	•	•	•	•	•	•	•
2 - 4 sec	0.39	0.24	0.26	0.30	0.10	0.06	0.12	0.16	0.12	0.19	0.46	1.07	0.14	0.10	0.43	0.32	4.45
4 - 6 sec	0.13	0.13	0.46	0.94	0.86	0.95	0.63	0.78	2.10	5.63	7.17	3.05	0.23	0.33	0.14	0.16	23.70
6 - 8 sec	•	•	•	0.12	1.73	2.61	3.51	4.35	6.97	8.71	2.56	0.09	•	•	•	•	30.65
8 - 10 sec	•	•	•	0.01	1.17	5.62	16.52	2.23	1.32	0.56	•	•	•	•	•	•	27.43
10 - 12 sec	•	•	•	•	0.22	0.88	8.01	0.62	0.39	0.27	•	•	•	•	•	•	10.38
12 - 14 sec	•	•	•	•	•	•	1.96	0.35	0.09	0.06	•	•	•	•	•	•	2.45
14 - 16 sec	•	•	•	•	•	•	0.27	0.36	0.10	0.01	•	•	•	•	•	•	0.75
18 - 20 sec	•	•	•	•	•	•	•	0.19	•	•	•	•	•	•	•	•	0.19
22 - 24 sec	•	•	•	•	•	•	•	•	•	•	•	•	•	•	•	•	•
Total	0.52	0.37	0.72	1.37	4.08	10.11	31.02	9.03	11.09	15.44	10.20	4.21	0.37	0.43	0.58	0.48	100.00

Long Island Wind Climatological Wind Rose for August: 1979 - 2015



Joint Frequency Distribution Table

	N	NNE	NE	ENE	E	ESE	SE	SSE	S	SSW	SW	WSW	W	WNW	NW	NNW	Total
calm	0.03	0.01	0.01	0.03	0.01	0.03	•	0.03	•	•	•	•	0.03	0.01	0.01	•	0.22
0 - 5 kts	0.27	0.49	0.50	0.62	0.46	0.46	0.66	0.49	0.59	0.53	0.73	0.85	0.55	0.49	0.48	0.40	8.58
5 - 10 kts	0.99	1.32	1.24	1.45	1.61	1.67	1.41	1.66	2.26	3.23	3.82	3.54	2.22	1.67	1.41	1.31	30.82
10 - 15 kts	1.51	1.47	1.53	1.76	1.41	0.78	1.07	1.12	1.81	3.33	6.47	5.85	2.46	1.56	1.01	1.27	34.39
15 - 20 kts	0.65	0.92	1.53	1.08	0.56	0.20	0.24	0.22	0.88	1.57	4.12	4.00	0.85	0.59	0.65	0.59	18.65
20 - 25 kts	0.12	0.37	0.66	0.72	0.14	0.09	0.06	0.16	0.24	0.46	1.25	0.89	0.06	0.07	0.16	0.24	5.70
25 - 30 kts	0.07	0.14	0.39	0.14	0.12	0.03	0.03	•	0.04	0.03	0.20	0.04	0.03	0.07	0.03	0.03	1.40
30 - 35 kts	•	0.01	0.07	0.01	•	0.04	•	•	0.01	•	•	•	•	0.01	•	•	0.17
35 - 40 kts	0.01	0.01	•	•	•	•	•	•	•	•	•	•	•	•	•	•	0.03
40 - 45 kts	•	•	•	•	•	0.01	•	•	0.01	•	•	•	•	•	•	•	0.03
45 - 50 kts	•	•	•	•	•	•	•	•	•	•	•	•	0.01	•	•	•	0.01
Total	3.66	4.77	5.93	5.82	4.32	3.31	3.47	3.67	5.86	9.14	16.59	15.18	6.21	4.48	3.74	3.85	100.00