

## Long Island Wind - June

Latitude: 40.90 N Longitude: 71.00 W

### Weather Days

Wave Height > 6.0 ft Mean: 3.6 days Range: 1.0 - 6.1 days p50:3 days p75:1.5 days p90:1 days

Wave Height > 7.0 ft Mean: 1.8 days Range: 0.2 - 3.3 days p50:2 days p75:1 days p90:0.5 days

Wave Height > 8.0 ft Mean: 0.8 days Range: 0.0 - 1.5 days p50:1 days p75:0.5 days p90:0.5 days

Wind Speed > 15.0 knots Mean: 9.9 days Range: 7.4 - 12.4 days p50:10.5 days p75:8.5 days p90:6 days

Wind Speed > 20.0 knots Mean: 3.1 days Range: 1.5 - 4.7 days p50:3.5 days p75:2 days p90:1.5 days

Wind Speed > 25.0 knots Mean: 0.4 days Range: 0.1 - 0.8 days p50:0.5 days p75:0.5 days p90:0.5 days

### Working Window

Wave Height < 6.0 ft  
A 1 day or longer window will statistically occur 3.2 times per month  
A 2 day or longer window will statistically occur 2.7 times per month  
A 3 day or longer window will statistically occur 2.1 times per month

Wave Height < 7.0 ft  
A 1 day or longer window will statistically occur 2.2 times per month  
A 2 day or longer window will statistically occur 2.0 times per month  
A 3 day or longer window will statistically occur 1.6 times per month

Wave Height < 8.0 ft  
A 1 day or longer window will statistically occur 1.7 times per month  
A 2 day or longer window will statistically occur 1.6 times per month  
A 3 day or longer window will statistically occur 1.4 times per month

### Waves

Mean Height: 2 - 4 ft

The wave heights will occasionally reach 8 - 10 ft, but rarely higher.

Mean Period: 6 - 8 sec

The wave periods will occasionally reach 14 - 16 sec, but rarely longer.

Principle Direction, from: SSW

WindSea/Swell: 26% / 74%

### Winds

Mean Speed: 10 - 15 kts

The winds will occasionally reach 25 - 30 kts, but rarely greater.

Principle Direction, from: SW

### Currents

Mean Speed: 0.25-0.50 kts

The currents will occasionally reach 0.75-1.00 kts, but rarely greater.

Principle Direction, to: ESE

### Weather Days

Current Speed > 1.0 knots Mean: 0.1 days Range: 0.0 - 0.5 days p50:1 days p75:1 days p90:1 days

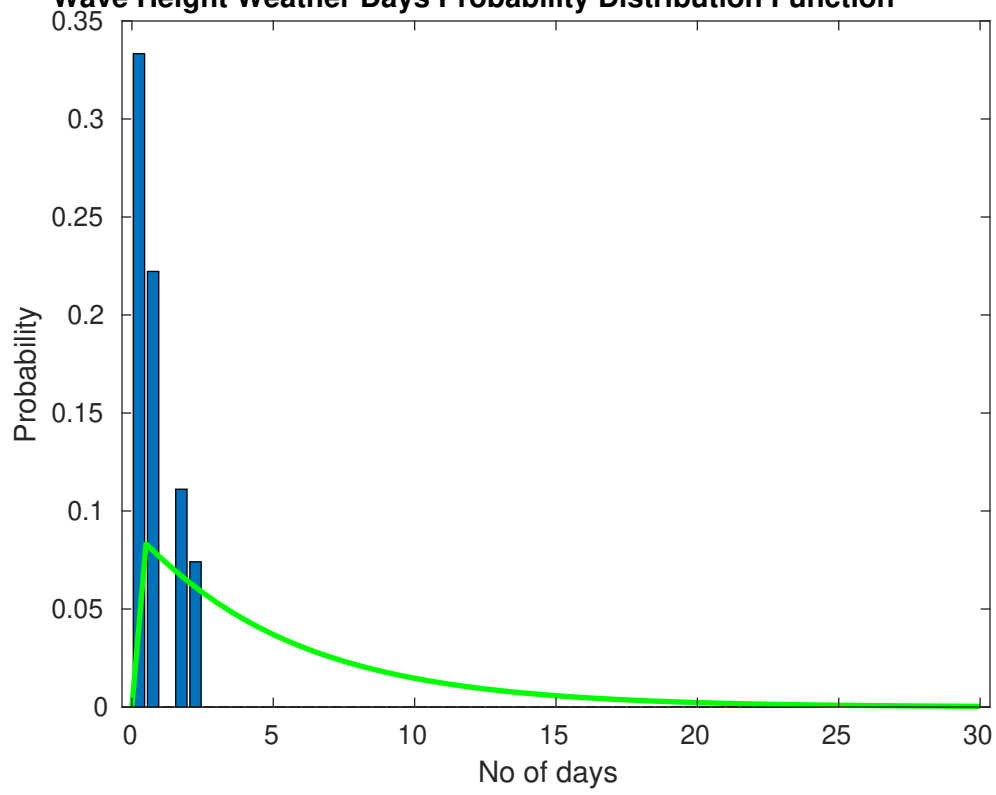
Current Speed > 1.5 knots Mean: 0.0 days Range: 0.0 - 0.0 days p50:1 days p75:1 days p90:1 days

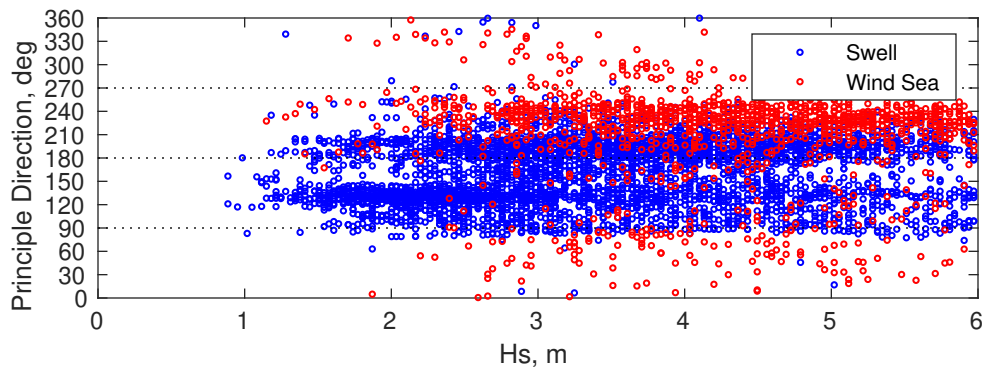
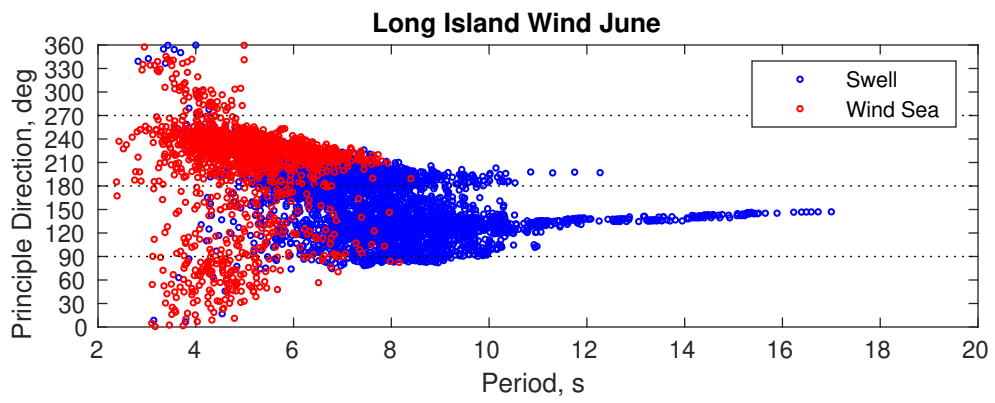
Current Speed > 2.0 knots Mean: 0.0 days Range: 0.0 - 0.0 days p50:1 days p75:1 days p90:1 days

### Severe Storms

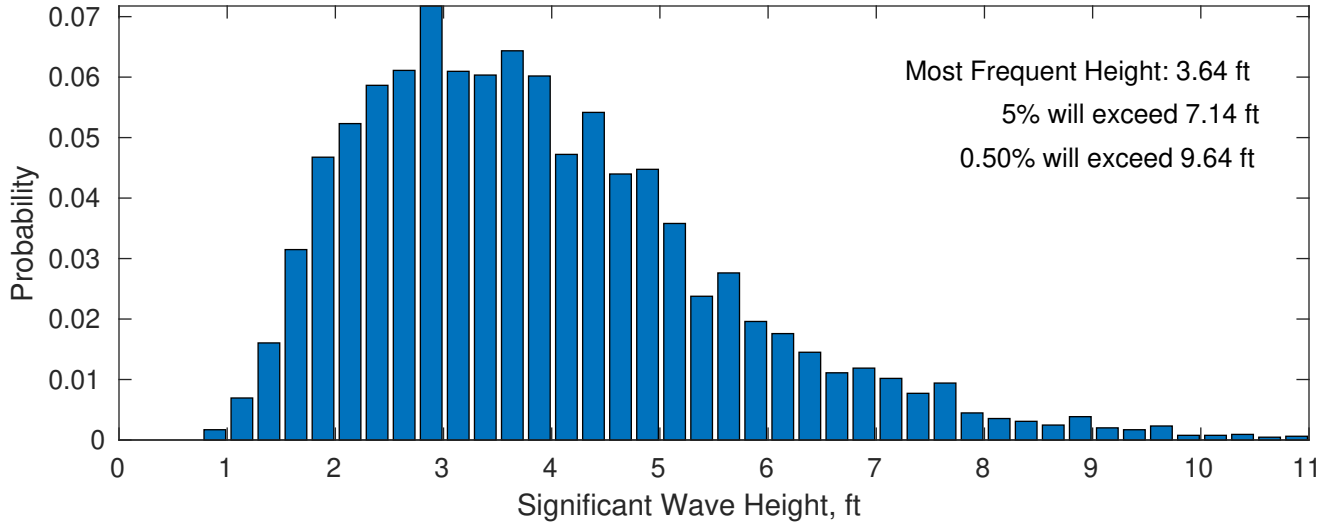
Severe storms with gale force winds and extreme waves are not expected during this month.

**Wave Height Weather Days Probability Distribution Function**

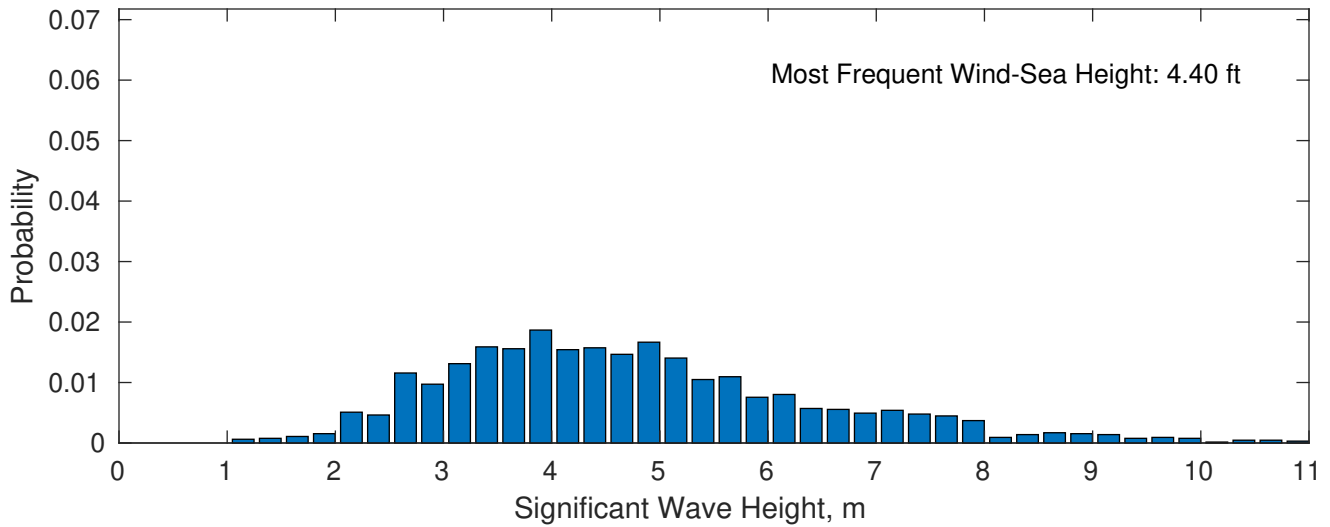




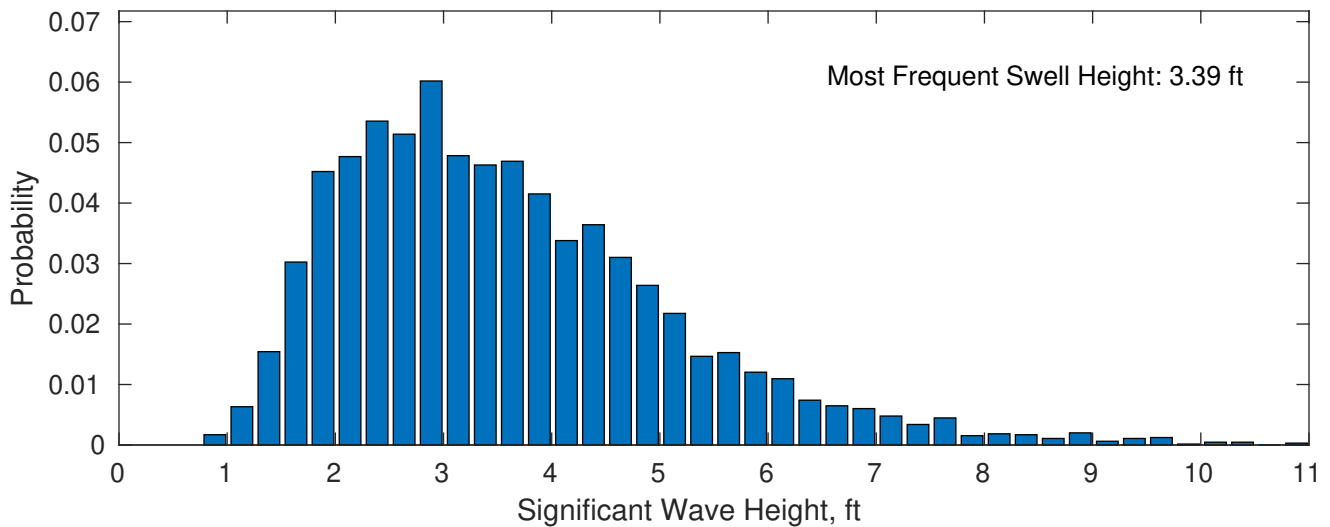
**June Wave Height PDF: 1979 - 2015**



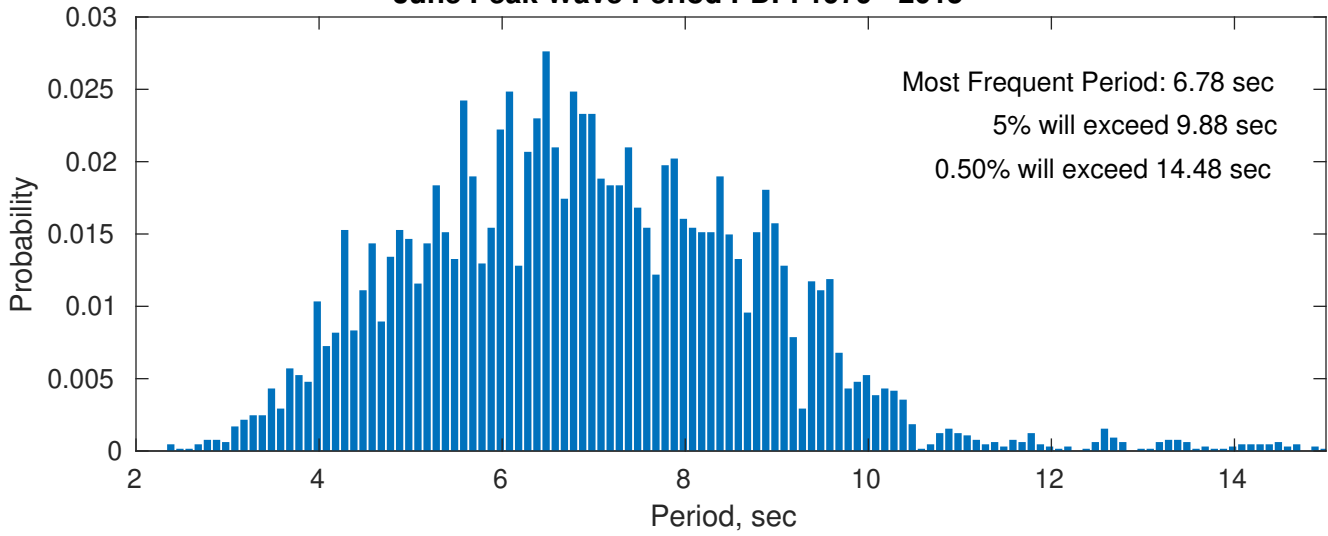
**Wind-Sea: 25.76%**



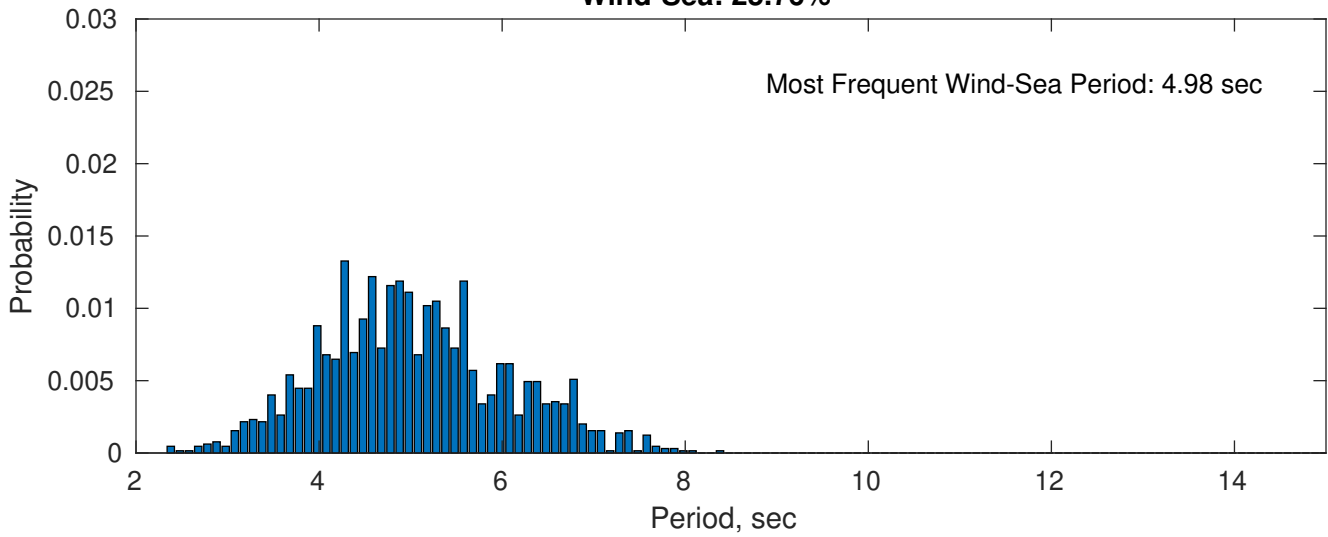
**Swell: 74.24%**



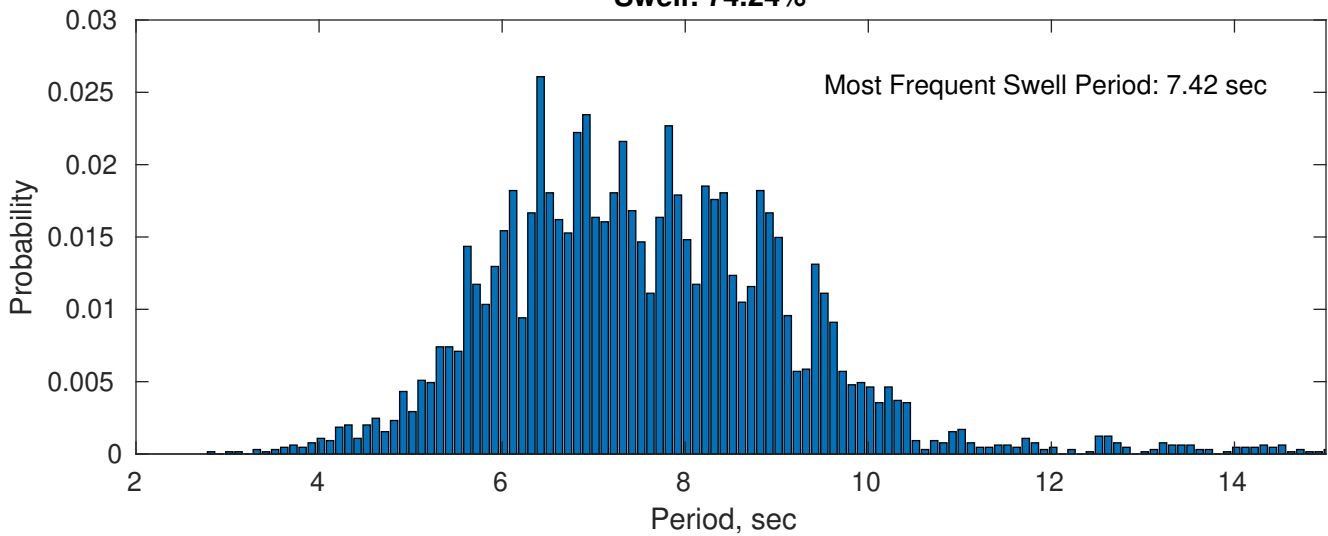
### June Peak Wave Period PDF: 1979 - 2015



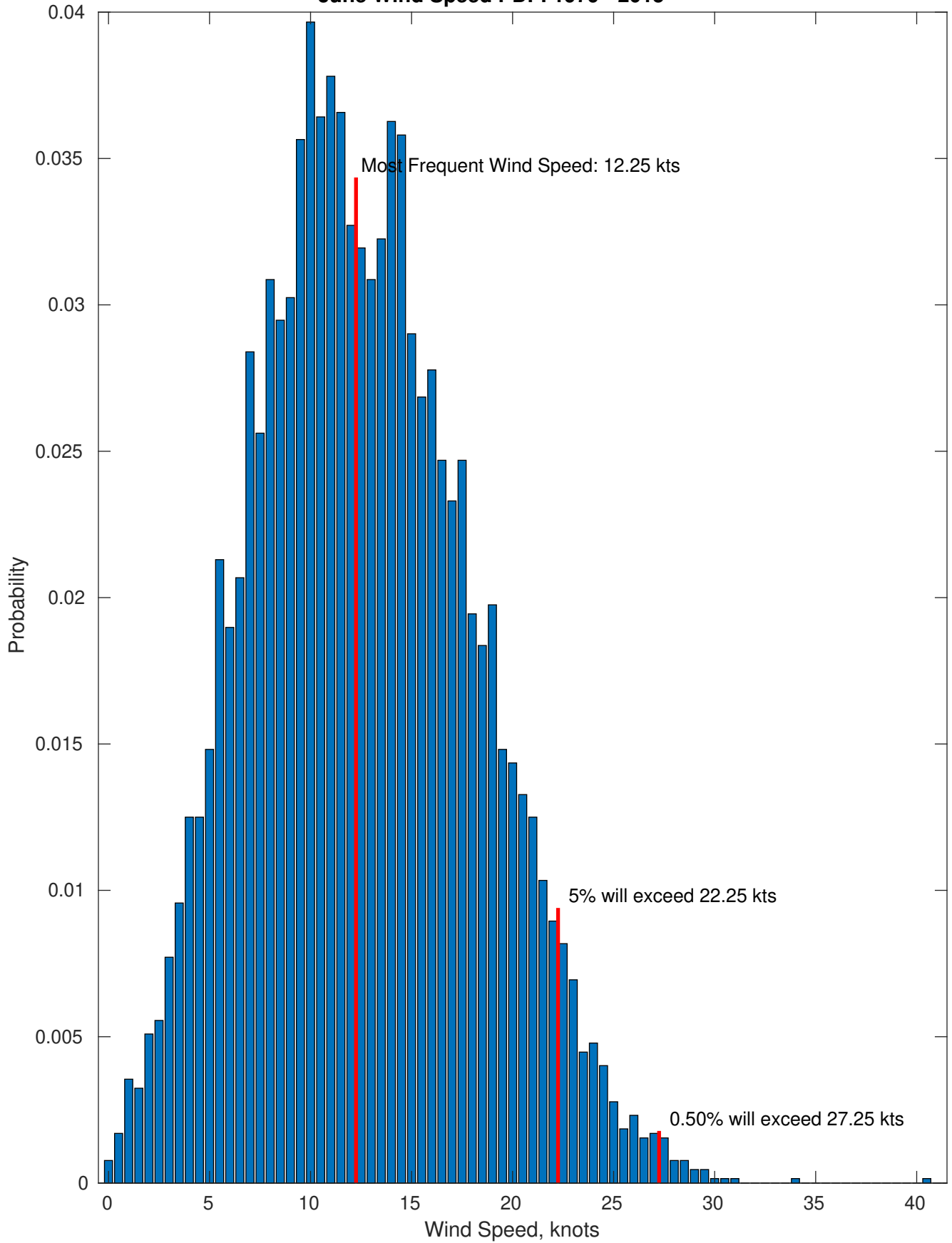
### Wind-Sea: 25.76%



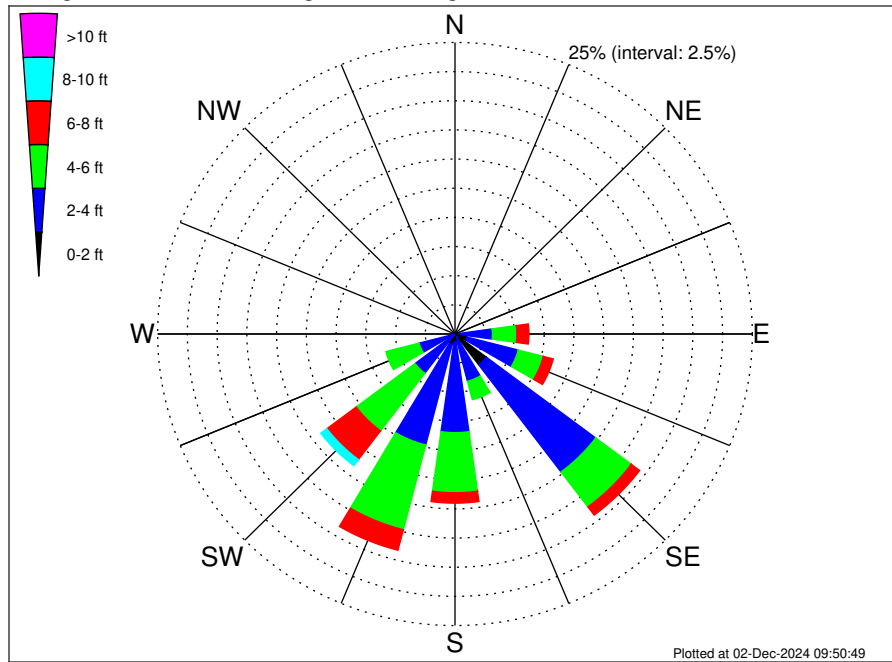
### Swell: 74.24%



June Wind Speed PDF: 1979 - 2015



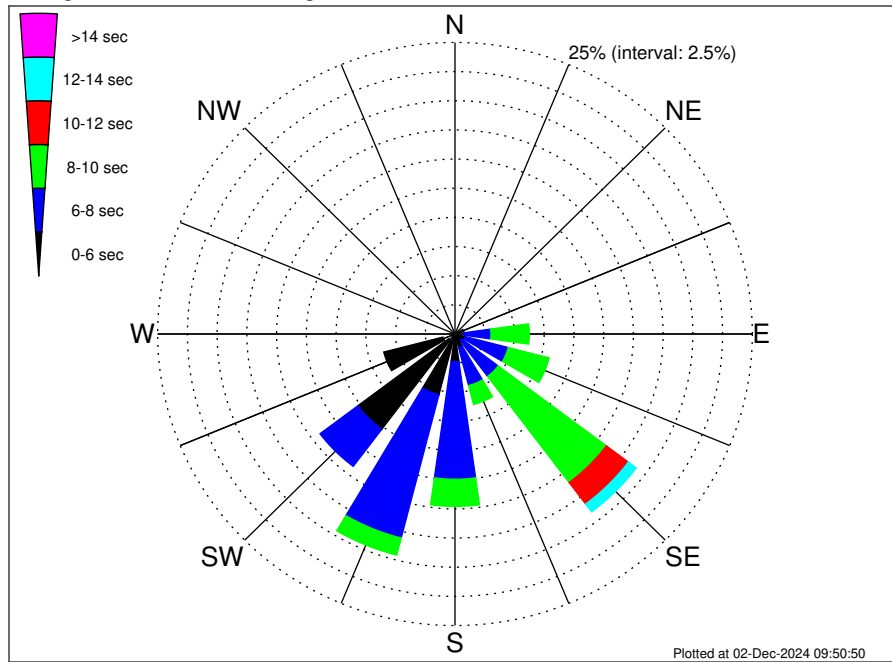
Long Island Wind Climatological WaveHeight Rose for June: 1979 - 2015



Joint Frequency Distribution Table

	N	NNE	NE	ENE	E	ESE	SE	SSE	S	SSW	SW	WSW	W	WNW	NW	NNW	Total
calm	•	•	•	•	•	0.03	•	0.02	0.02	•	•	•	•	•	•	•	0.06
1 - 2 ft	0.02	•	•	0.02	0.32	1.03	3.30	0.28	0.66	0.93	0.11	0.15	0.02	•	•	0.05	6.88
2 - 4 ft	0.17	0.11	0.22	0.39	2.82	4.43	11.51	3.89	7.78	8.90	4.10	2.96	0.35	0.32	0.19	0.22	48.36
4 - 6 ft	0.05	0.19	0.31	0.35	2.05	2.18	3.75	1.64	5.15	7.50	6.19	2.89	0.19	0.15	0.02	0.02	32.61
6 - 8 ft	0.03	0.02	0.08	0.08	1.02	0.86	0.88	0.37	0.90	1.82	3.09	0.34	•	•	•	0.02	9.49
8 - 10 ft	•	•	0.02	0.02	0.12	0.19	0.23	0.17	0.29	0.48	0.65	•	•	•	•	•	2.16
10 - 12 ft	•	•	•	0.02	•	0.06	0.03	0.03	0.05	0.11	0.08	•	•	•	•	•	0.37
12 - 14 ft	•	•	•	•	•	•	•	•	0.06	•	•	•	•	•	•	•	0.06
14 - 16 ft	•	•	•	•	•	•	•	•	•	•	•	•	•	•	•	•	•
16 - 18 ft	•	•	•	•	•	•	•	•	•	•	•	•	•	•	•	•	•
> 18 ft	•	•	•	•	•	•	•	•	•	•	•	•	•	•	•	•	•
Total	0.26	0.31	0.62	0.86	6.34	8.78	19.71	6.39	14.91	19.74	14.21	6.34	0.56	0.48	0.20	0.29	100.00

Long Island Wind Climatological WavePeriod Rose for June: 1979 - 2015

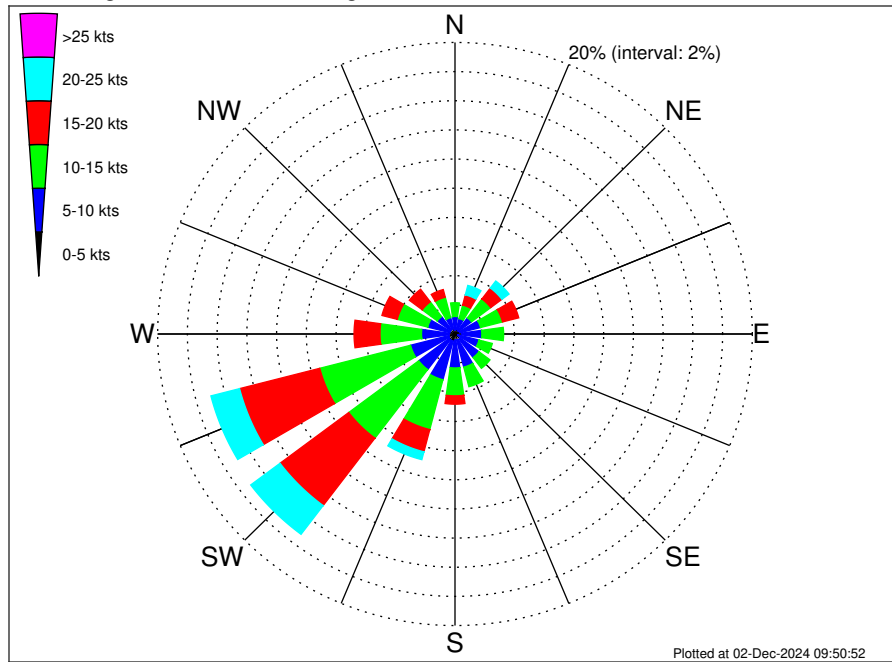


Joint Frequency Distribution Table

	N	NNE	NE	ENE	E	ESE	SE	SSE	S	SSW	SW	WSW	W	WNW	NW	NNW	Total
calm	•	•	•	•	•	•	•	•	•	•	•	•	•	•	•	•	•
1 - 2 sec	•	•	•	•	•	•	•	•	•	•	•	•	•	•	•	•	•
2 - 4 sec	0.20	0.12	0.20	0.11	0.14	0.14	0.03	0.08	0.14	0.26	0.66	1.05	0.12	0.09	0.17	0.28	3.80
4 - 6 sec	0.06	0.19	0.42	0.66	0.62	0.77	0.69	1.14	2.24	5.11	9.57	5.14	0.43	0.39	0.03	0.02	27.47
6 - 8 sec	•	•	•	0.09	2.27	3.72	3.83	3.35	10.08	12.70	3.98	0.15	•	•	•	•	40.17
8 - 10 sec	•	•	•	•	3.23	3.55	11.39	1.67	2.33	1.51	•	•	•	•	•	•	23.67
10 - 12 sec	•	•	•	•	0.09	0.60	2.31	0.05	0.12	0.14	•	•	•	•	•	•	3.32
12 - 14 sec	•	•	•	•	•	•	0.83	•	•	0.02	•	•	•	•	•	•	0.85
14 - 16 sec	•	•	•	•	•	•	0.62	0.02	•	•	•	•	•	•	•	•	0.63
18 - 20 sec	•	•	•	•	•	•	•	0.09	•	•	•	•	•	•	•	•	0.09
22 - 24 sec	•	•	•	•	•	•	•	•	•	•	•	•	•	•	•	•	•
Total	0.26	0.31	0.62	0.86	6.34	8.78	19.71	6.39	14.91	19.74	14.21	6.34	0.56	0.48	0.20	0.29	100.00



Long Island Wind Climatological Wind Rose for June: 1979 - 2015



Joint Frequency Distribution Table

	N	NNE	NE	ENE	E	ESE	SE	SSE	S	SSW	SW	WSW	W	WNW	NW	NNW	Total
calm	0.02	•	0.05	0.02	0.02	0.02	•	0.02	•	•	0.02	0.03	0.02	0.02	•	0.05	0.25
0 - 5 kts	0.26	0.35	0.25	0.32	0.45	0.20	0.45	0.43	0.40	0.51	0.48	0.42	0.39	0.35	0.37	0.34	5.97
5 - 10 kts	0.93	0.74	1.10	1.44	1.34	1.45	1.57	1.90	1.93	2.73	2.56	2.64	1.85	1.53	1.13	0.77	25.60
10 - 15 kts	0.94	0.96	1.62	1.53	1.47	0.93	0.93	1.39	1.91	3.53	5.90	6.31	2.79	2.11	1.27	1.45	35.03
15 - 20 kts	0.46	0.73	0.94	1.13	0.48	0.28	0.45	0.48	0.57	1.57	5.79	5.57	1.74	1.06	1.08	0.54	22.87
20 - 25 kts	0.12	0.66	0.60	0.40	0.17	0.19	0.15	0.22	0.20	0.56	2.47	1.99	0.37	0.34	0.25	0.09	8.78
25 - 30 kts	0.14	0.19	0.25	0.03	0.12	0.03	•	0.05	0.03	0.06	0.28	0.08	0.05	0.02	0.03	0.08	1.42
30 - 35 kts	•	•	0.02	•	0.02	•	•	•	•	•	•	0.02	•	•	•	0.02	0.06
35 - 40 kts	•	•	•	•	•	•	•	•	•	•	•	•	•	•	•	•	•
40 - 45 kts	•	•	0.02	•	•	•	•	•	•	•	•	•	•	•	•	•	0.02
45 - 50 kts	•	•	•	•	•	•	•	•	•	•	•	•	•	•	•	•	•
Total	2.87	3.63	4.83	4.86	4.06	3.09	3.55	4.48	5.05	8.97	17.48	17.05	7.21	5.43	4.12	3.33	100.00