

Long Island Wind - May

Latitude: 40.90 N Longitude: 71.00 W

Weather Days

Wave Height > 6.0 ft Mean: 5.2 days Range: 2.7 - 7.7 days p50:5 days p75:3 days p90:2.5 days

Wave Height > 7.0 ft Mean: 3.0 days Range: 1.0 - 4.9 days p50:3 days p75:2 days p90:1 days

Wave Height > 8.0 ft Mean: 1.6 days Range: 0.2 - 3.1 days p50:2.5 days p75:1.5 days p90:0.5 days

Wind Speed > 15.0 knots Mean: 11.5 days Range: 9.0 - 13.9 days p50:12 days p75:10 days p90:8.5 days

Wind Speed > 20.0 knots Mean: 4.3 days Range: 2.7 - 5.9 days p50:4.5 days p75:3 days p90:2.5 days

Wind Speed > 25.0 knots Mean: 1.3 days Range: 0.3 - 2.3 days p50:1.5 days p75:1 days p90:0.5 days

Working Window

Wave Height < 6.0 ft
A 1 day or longer window will statistically occur 3.8 times per month
A 2 day or longer window will statistically occur 3.1 times per month
A 3 day or longer window will statistically occur 2.5 times per month

Wave Height < 7.0 ft
A 1 day or longer window will statistically occur 2.9 times per month
A 2 day or longer window will statistically occur 2.5 times per month
A 3 day or longer window will statistically occur 2.1 times per month

Wave Height < 8.0 ft
A 1 day or longer window will statistically occur 2.3 times per month
A 2 day or longer window will statistically occur 1.9 times per month
A 3 day or longer window will statistically occur 1.8 times per month

Waves

Mean Height: 2 - 4 ft

The wave heights will occasionally reach 10 - 12 ft, but rarely higher.

Mean Period: 6 - 8 sec

The wave periods will occasionally reach 10 - 12 sec, but rarely longer.

Principle Direction, from: SSW

WindSea/Swell: 25% / 75%

Winds

Mean Speed: 10 - 15 kts

The winds will occasionally reach 30 - 35 kts, but rarely greater.

Principle Direction, from: WSW

Currents

Mean Speed: 0.25-0.50 kts

The currents will occasionally reach 1.00-1.25 kts, but rarely greater.

Principle Direction, to: ESE

Weather Days

Current Speed > 1.0 knots Mean: 0.6 days Range: 0.0 - 1.5 days p50:1 days p75:1 days p90:1 days

Current Speed > 1.5 knots Mean: 0.1 days Range: 0.0 - 0.3 days p50:1 days p75:1 days p90:1 days

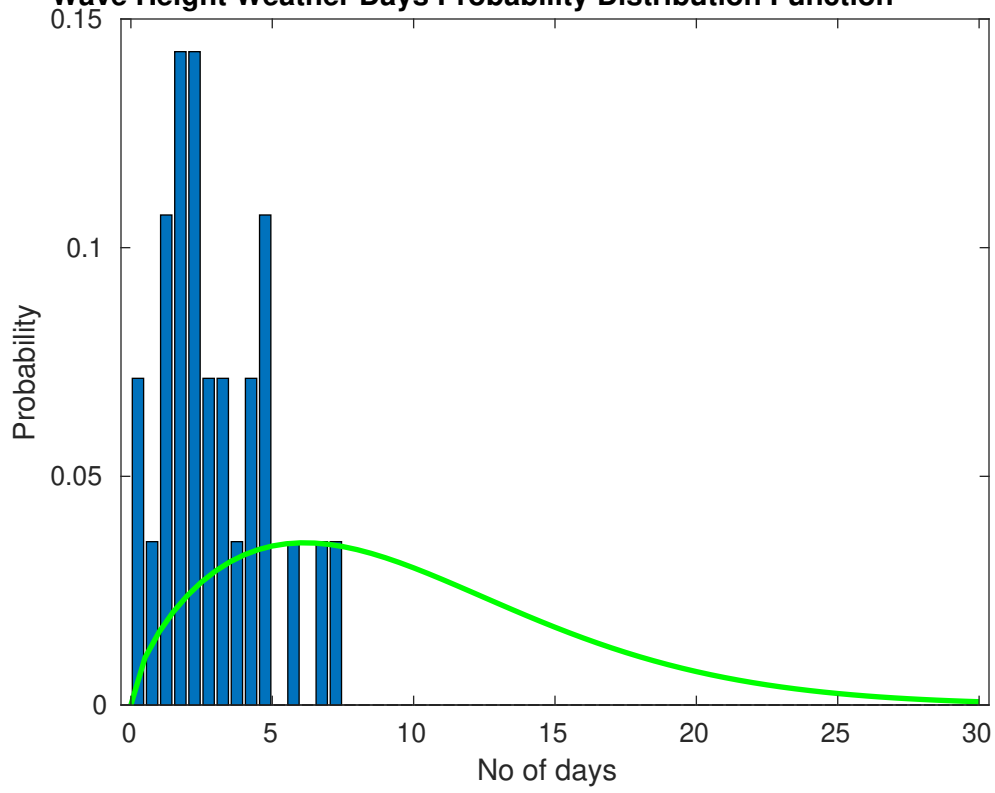
Current Speed > 2.0 knots Mean: 0.0 days Range: 0.0 - 0.0 days p50:1 days p75:1 days p90:1 days

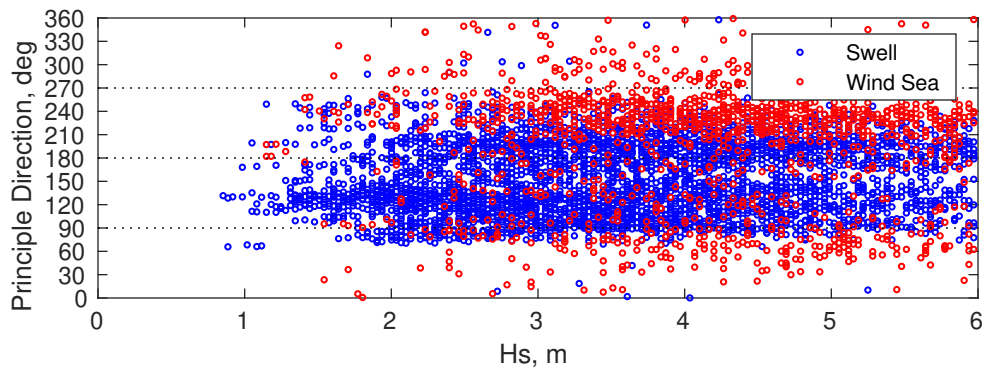
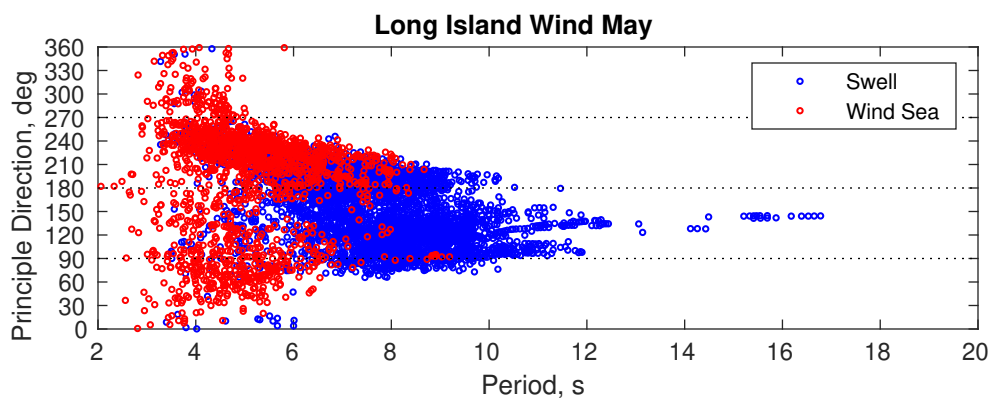
Severe Storms

There is a 4 % chance of a storm occurring in the month with winds peaking above 34 kts.

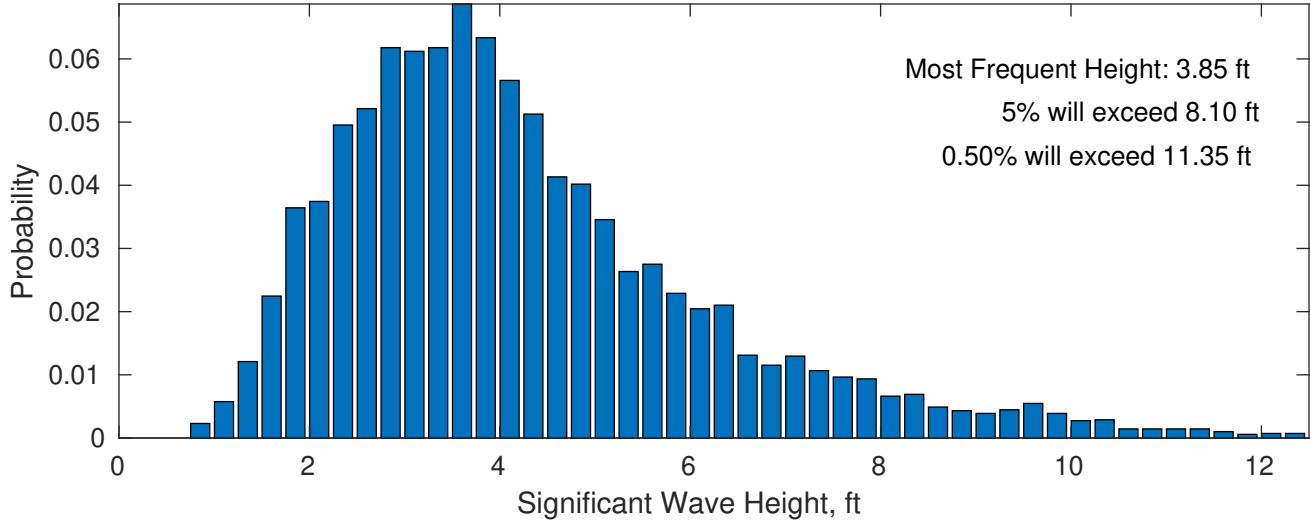
There is little chance of a storm occurring in the month with waves peaking at 4m (13 ft) or greater.

Wave Height Weather Days Probability Distribution Function

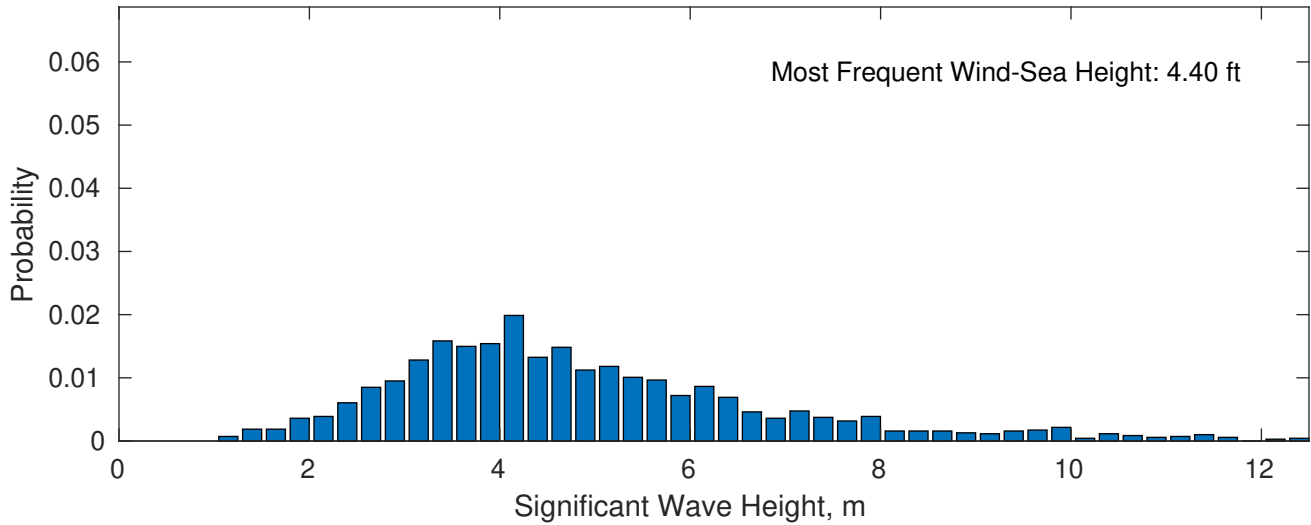




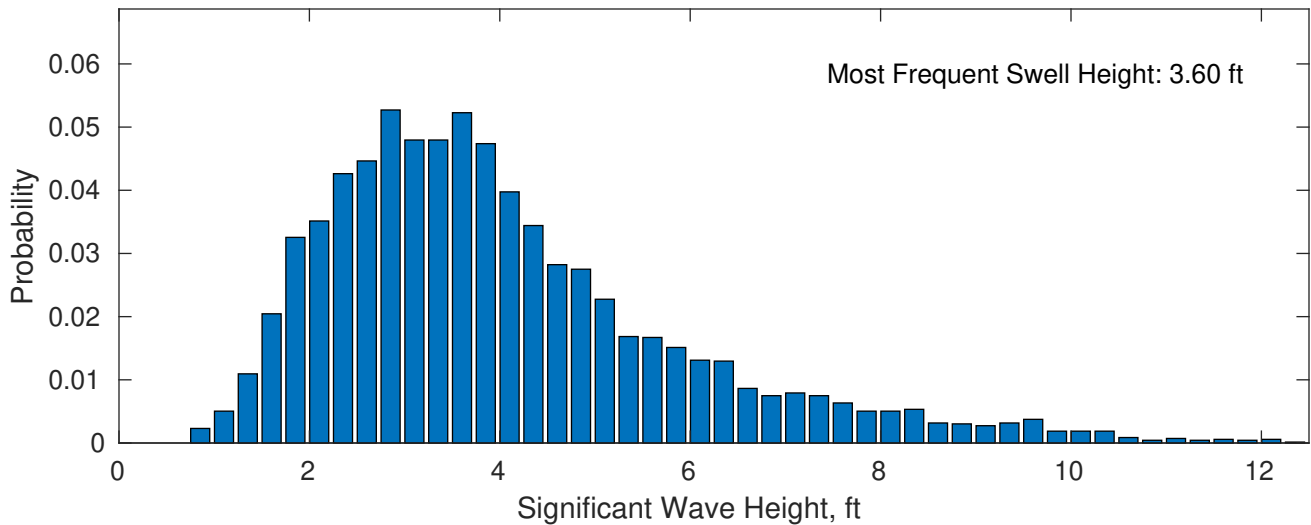
May Wave Height PDF: 1979 - 2015



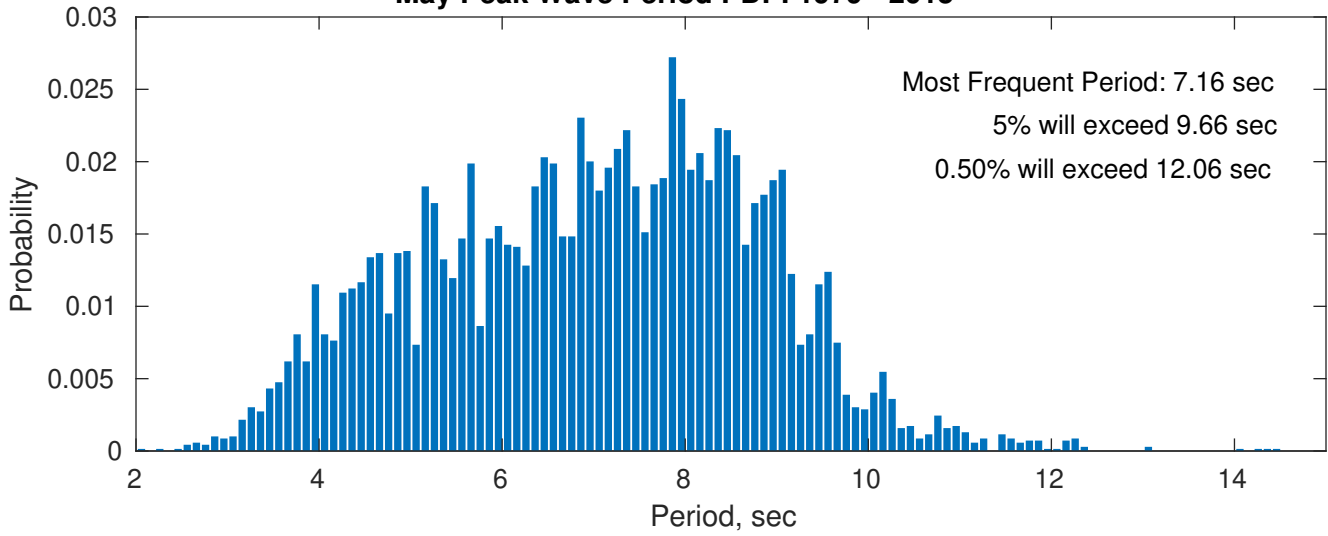
Wind-Sea: 25.14%



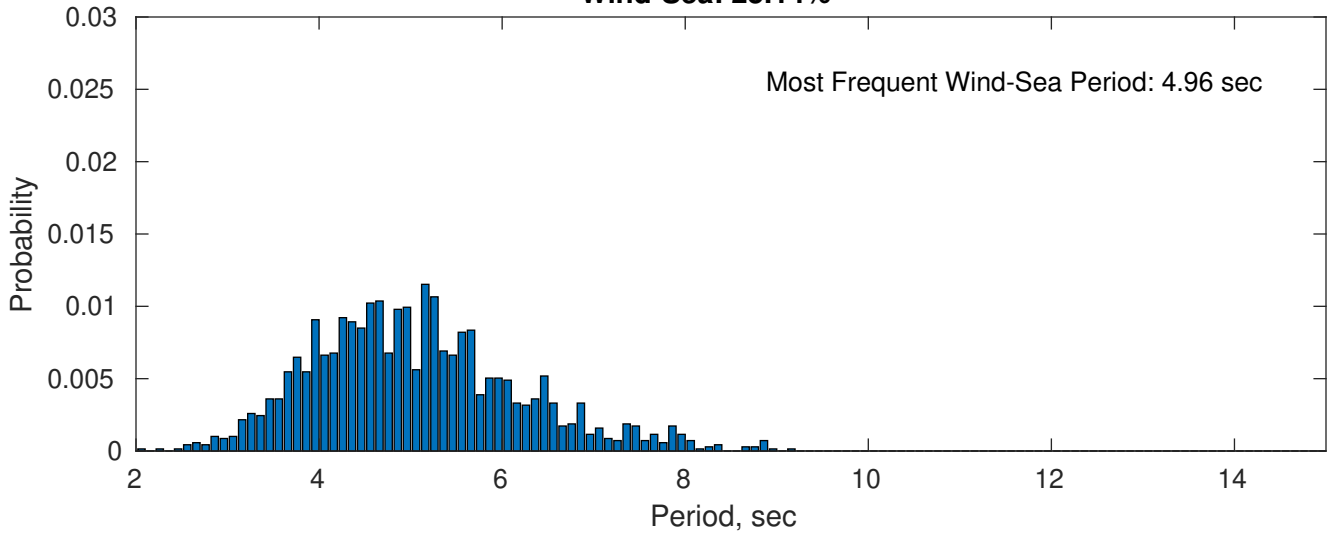
Swell: 74.86%



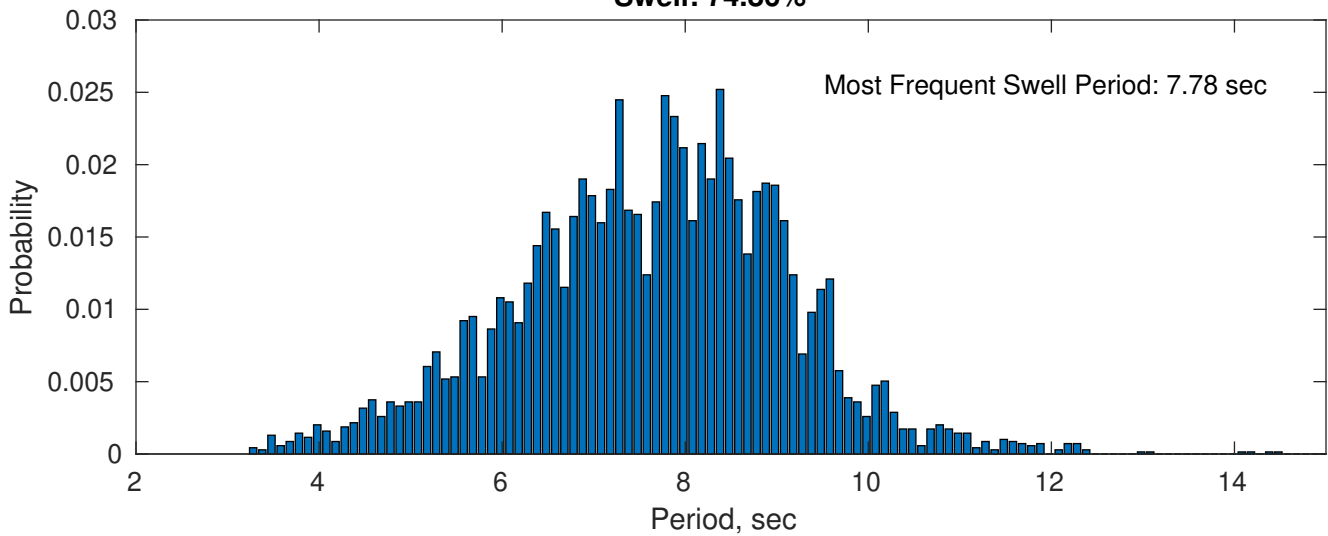
May Peak Wave Period PDF: 1979 - 2015



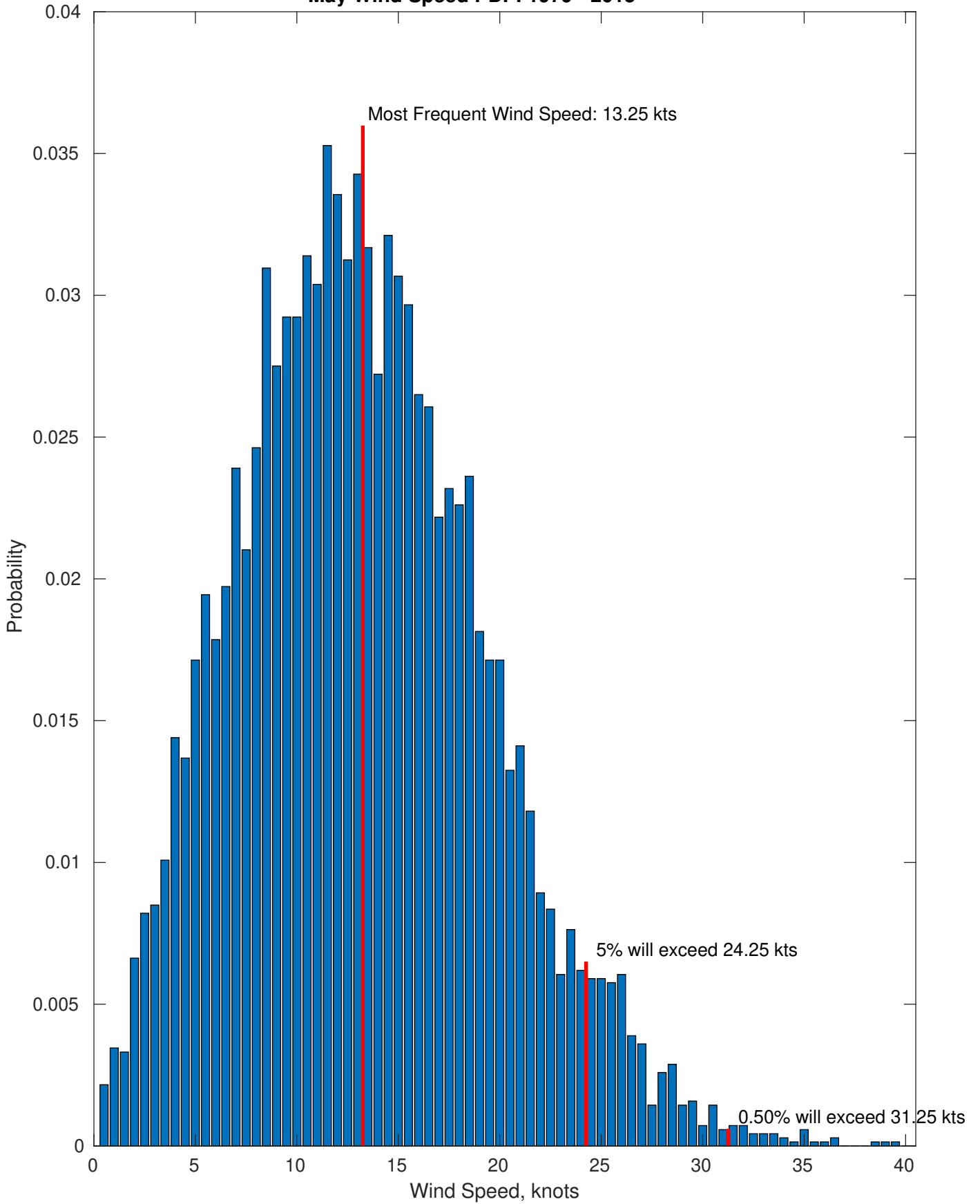
Wind-Sea: 25.14%



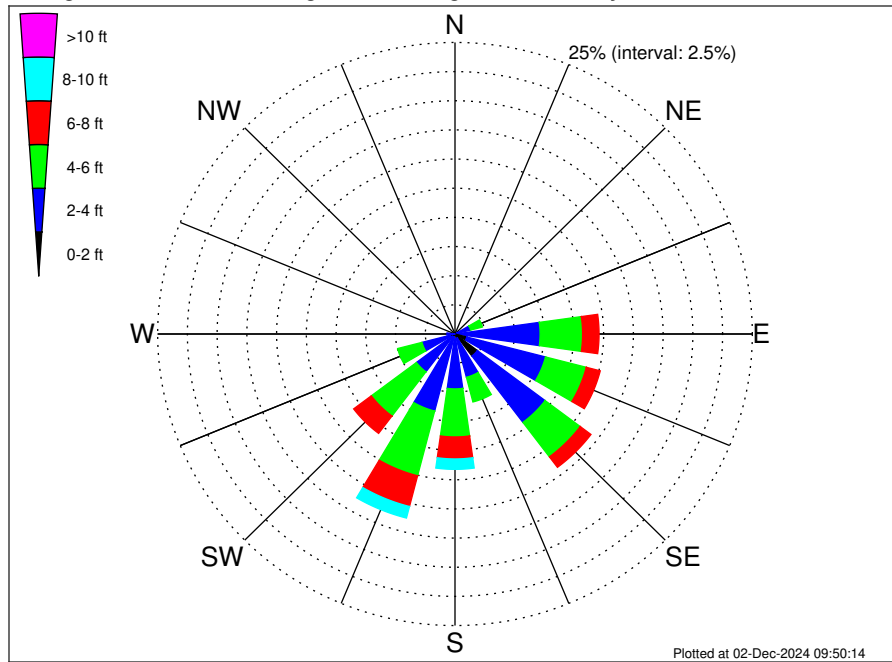
Swell: 74.86%



May Wind Speed PDF: 1979 - 2015



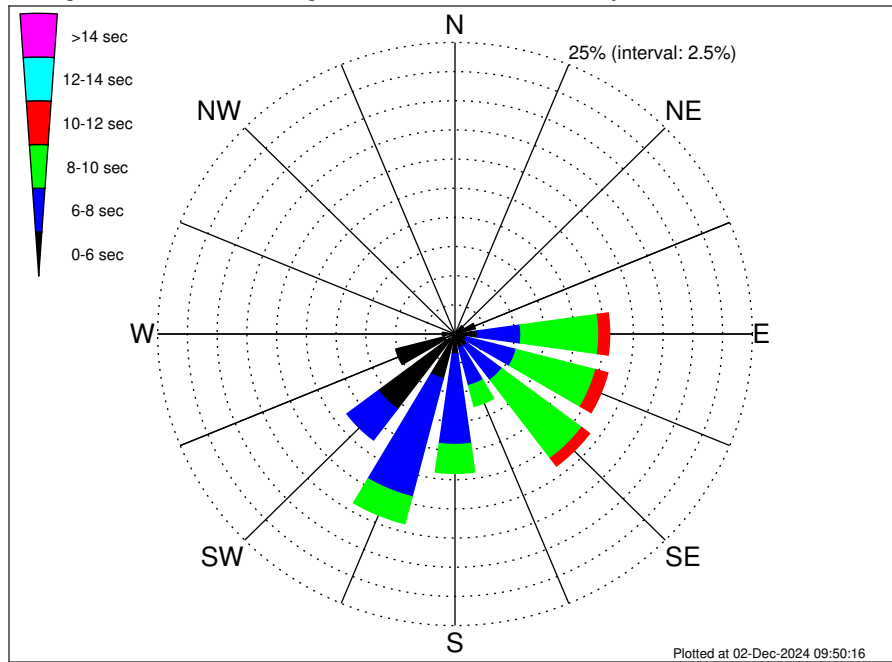
Long Island Wind Climatological WaveHeight Rose for May: 1979 - 2015



Joint Frequency Distribution Table

	N	NNE	NE	ENE	E	ESE	SE	SSE	S	SSW	SW	WSW	W	WNW	NW	NNW	Total
calm	•	•	•	0.01	•	•	0.07	0.01	•	•	•	•	•	•	•	•	0.10
1 - 2 ft	0.03	0.01	0.01	0.17	0.30	1.02	2.29	0.37	0.43	0.26	0.29	0.43	0.03	0.03	0.03	•	5.72
2 - 4 ft	0.19	0.13	0.22	1.17	6.85	6.84	7.13	3.44	4.28	6.57	3.77	2.43	0.65	0.48	0.24	0.10	44.48
4 - 6 ft	0.13	0.07	0.43	1.02	3.57	3.54	3.70	2.19	4.12	5.73	4.75	2.12	0.36	0.27	0.10	0.06	32.17
6 - 8 ft	•	0.07	0.22	0.27	1.38	1.21	1.12	0.56	1.89	2.72	1.86	0.29	0.03	•	•	•	11.62
8 - 10 ft	0.04	0.01	0.04	0.03	0.62	0.59	0.30	0.16	0.89	1.02	0.49	0.04	•	•	•	•	4.25
10 - 12 ft	0.03	•	0.01	•	0.26	0.07	0.03	•	0.36	0.42	0.24	•	•	•	•	•	1.43
12 - 14 ft	•	•	•	•	0.01	0.01	0.01	•	0.04	0.12	0.03	•	•	•	•	•	0.23
14 - 16 ft	•	•	•	•	•	•	•	•	•	•	•	•	•	•	•	•	•
16 - 18 ft	•	•	•	•	•	•	•	•	•	•	•	•	•	•	•	•	•
> 18 ft	•	•	•	•	•	•	•	•	•	•	•	•	•	•	•	•	•
Total	0.42	0.30	0.94	2.68	13.00	13.29	14.66	6.74	12.01	16.83	11.43	5.31	1.07	0.78	0.37	0.16	100.00

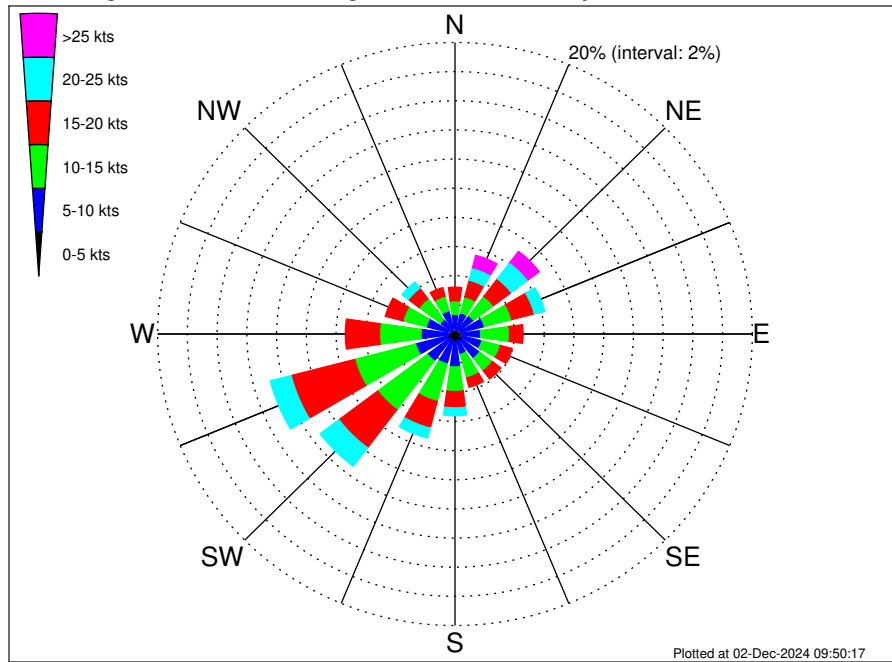
Long Island Wind Climatological WavePeriod Rose for May: 1979 - 2015



Joint Frequency Distribution Table

	N	NNE	NE	ENE	E	ESE	SE	SSE	S	SSW	SW	WSW	W	WNW	NW	NNW	Total
calm	•	•	•	•	•	•	•	•	•	•	•	•	•	•	•	•	•
1 - 2 sec	•	•	•	•	•	•	•	•	•	•	•	•	•	•	•	•	•
2 - 4 sec	0.23	0.14	0.16	0.23	0.52	0.13	0.26	0.20	0.20	0.16	0.56	0.89	0.36	0.30	0.24	0.10	4.69
4 - 6 sec	0.17	0.16	0.73	1.54	1.37	0.84	1.01	1.02	1.51	3.79	7.50	4.26	0.71	0.48	0.13	0.06	25.27
6 - 8 sec	0.01	•	0.04	0.59	3.66	4.35	3.66	3.34	7.76	10.47	3.31	0.16	•	•	•	•	37.36
8 - 10 sec	•	•	•	0.30	6.55	6.91	8.41	1.84	2.48	2.39	0.06	•	•	•	•	•	28.95
10 - 12 sec	•	•	•	0.01	0.91	1.05	0.84	0.33	0.06	0.03	•	•	•	•	•	•	3.23
12 - 14 sec	•	•	•	•	•	0.01	0.22	•	•	•	•	•	•	•	•	•	0.23
14 - 16 sec	•	•	•	•	•	•	0.20	•	•	•	•	•	•	•	•	•	0.20
18 - 20 sec	•	•	•	•	•	•	0.07	•	•	•	•	•	•	•	•	•	0.07
22 - 24 sec	•	•	•	•	•	•	•	•	•	•	•	•	•	•	•	•	•
Total	0.42	0.30	0.94	2.68	13.00	13.29	14.66	6.74	12.01	16.83	11.43	5.31	1.07	0.78	0.37	0.16	100.00

Long Island Wind Climatological Wind Rose for May: 1979 - 2015



Joint Frequency Distribution Table

	N	NNE	NE	ENE	E	ESE	SE	SSE	S	SSW	SW	WSW	W	WNW	NW	NNW	Total
calm	0.01	0.01	•	0.04	0.01	0.01	0.03	•	0.01	•	0.03	•	•	0.03	•	0.01	0.22
0 - 5 kts	0.37	0.23	0.40	0.40	0.42	0.43	0.56	0.50	0.50	0.52	0.37	0.55	0.40	0.49	0.24	0.42	6.83
5 - 10 kts	0.96	1.25	1.17	1.60	1.30	1.43	1.48	0.94	1.74	1.60	1.92	2.19	1.89	1.48	0.99	1.21	23.14
10 - 15 kts	0.94	1.14	1.67	1.90	1.94	1.28	1.08	1.67	1.68	2.66	4.19	4.23	2.79	1.63	1.79	1.04	31.64
15 - 20 kts	0.92	1.18	1.50	1.57	0.91	0.82	0.71	0.66	1.12	1.89	3.27	4.42	2.29	1.21	0.91	0.60	23.98
20 - 25 kts	0.22	0.89	1.43	0.72	0.23	0.24	0.06	0.27	0.53	0.71	1.58	1.44	0.48	0.48	0.53	0.13	9.94
25 - 30 kts	0.20	0.65	0.79	0.23	0.09	0.09	0.04	0.12	0.19	0.23	0.42	0.20	0.10	0.09	0.03	0.06	3.51
30 - 35 kts	0.04	0.14	0.13	0.03	0.01	0.01	•	0.01	0.03	0.04	0.04	0.01	0.03	0.03	0.01	•	0.59
35 - 40 kts	0.04	0.07	0.01	0.01	•	•	•	•	•	•	•	•	•	•	•	0.01	0.16
40 - 45 kts	•	•	•	•	•	•	•	•	•	•	•	•	•	•	•	•	•
45 - 50 kts	•	•	•	•	•	•	•	•	•	•	•	•	•	•	•	•	•
Total	3.72	5.57	7.10	6.51	4.91	4.32	3.96	4.18	5.82	7.65	11.82	13.05	7.98	5.43	4.51	3.49	100.00