

Long Island Wind - November

Latitude: 40.90 N Longitude: 71.00 W

Weather Days

Wave Height > 6.0 ft Mean: 9.7 days Range: 7.0 - 12.3 days p50:10 days p75:8 days p90:6.5 days

Wave Height > 7.0 ft Mean: 6.7 days Range: 4.1 - 9.2 days p50:7 days p75:5.5 days p90:3.5 days

Wave Height > 8.0 ft Mean: 4.7 days Range: 2.6 - 6.7 days p50:5 days p75:3 days p90:2 days

Wind Speed > 15.0 knots Mean: 18.8 days Range: 16.3 - 21.3 days p50:19 days p75:18 days p90:16 days

Wind Speed > 20.0 knots Mean: 11.0 days Range: 8.3 - 13.6 days p50:11.5 days p75:9.5 days p90:8 days

Wind Speed > 25.0 knots Mean: 4.9 days Range: 3.0 - 6.9 days p50:5.5 days p75:4 days p90:2.5 days

Working Window

Wave Height < 6.0 ft
A 1 day or longer window will statistically occur 5.0 times per month
A 2 day or longer window will statistically occur 3.3 times per month
A 3 day or longer window will statistically occur 2.0 times per month

Wave Height < 7.0 ft
A 1 day or longer window will statistically occur 4.8 times per month
A 2 day or longer window will statistically occur 3.6 times per month
A 3 day or longer window will statistically occur 2.6 times per month

Wave Height < 8.0 ft
A 1 day or longer window will statistically occur 4.3 times per month
A 2 day or longer window will statistically occur 3.3 times per month
A 3 day or longer window will statistically occur 2.6 times per month

Waves

Mean Height: 4 - 6 ft

The wave heights will occasionally reach 14 - 16 ft, but rarely higher.

Mean Period: 6 - 8 sec

The wave periods will occasionally reach 12 - 14 sec, but rarely longer.

Principle Direction, from: ESE

WindSea/Swell: 46% / 54%

Winds

Mean Speed: 15 - 20 kts

The winds will occasionally reach 35 - 40 kts, but rarely greater.

Principle Direction, from: NW

Currents

Mean Speed: 0.25-0.50 kts

The currents will occasionally reach 1.25-1.50 kts, but rarely greater.

Principle Direction, to: W

Weather Days

Current Speed > 1.0 knots Mean: 1.3 days Range: 0.0 - 2.7 days p50:2 days p75:1 days p90:1 days

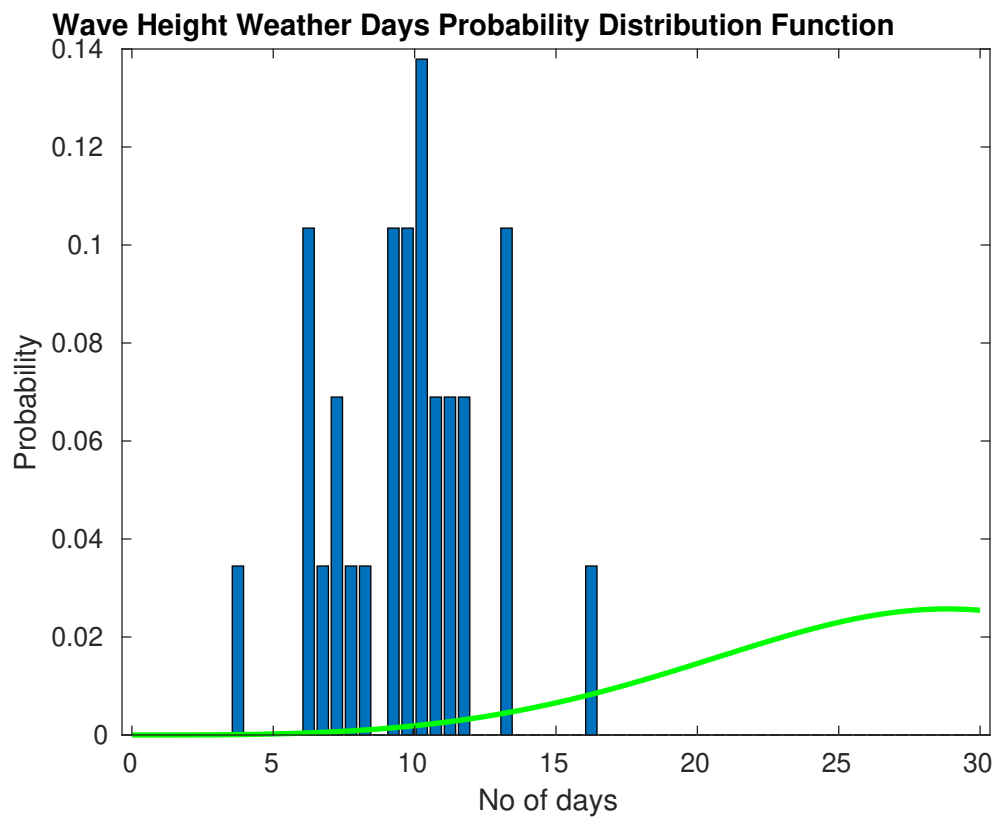
Current Speed > 1.5 knots Mean: 0.1 days Range: 0.0 - 0.4 days p50:1 days p75:1 days p90:1 days

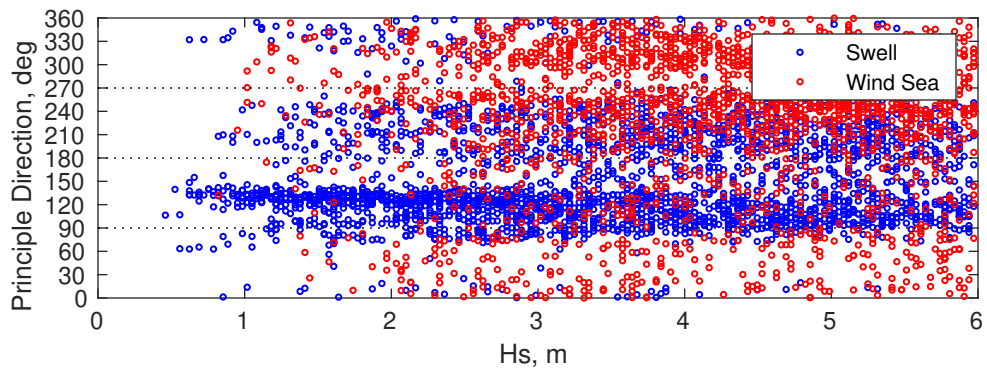
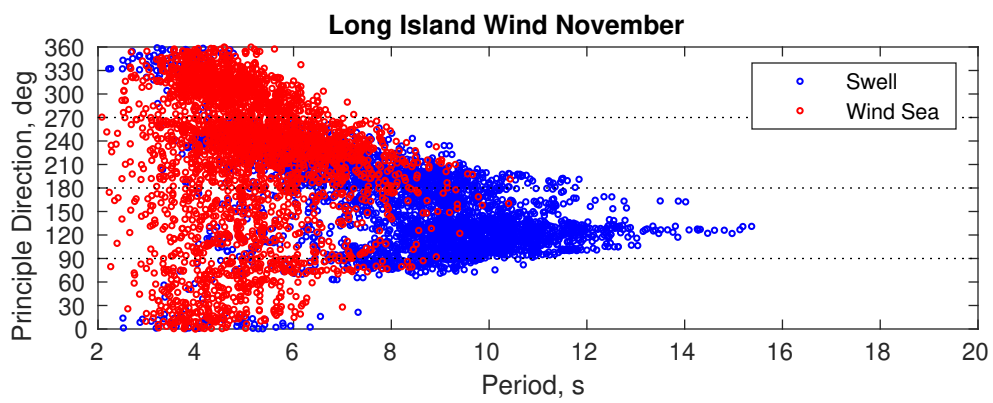
Current Speed > 2.0 knots Mean: 0.1 days Range: 0.0 - 0.3 days p50:1 days p75:1 days p90:1 days

Severe Storms

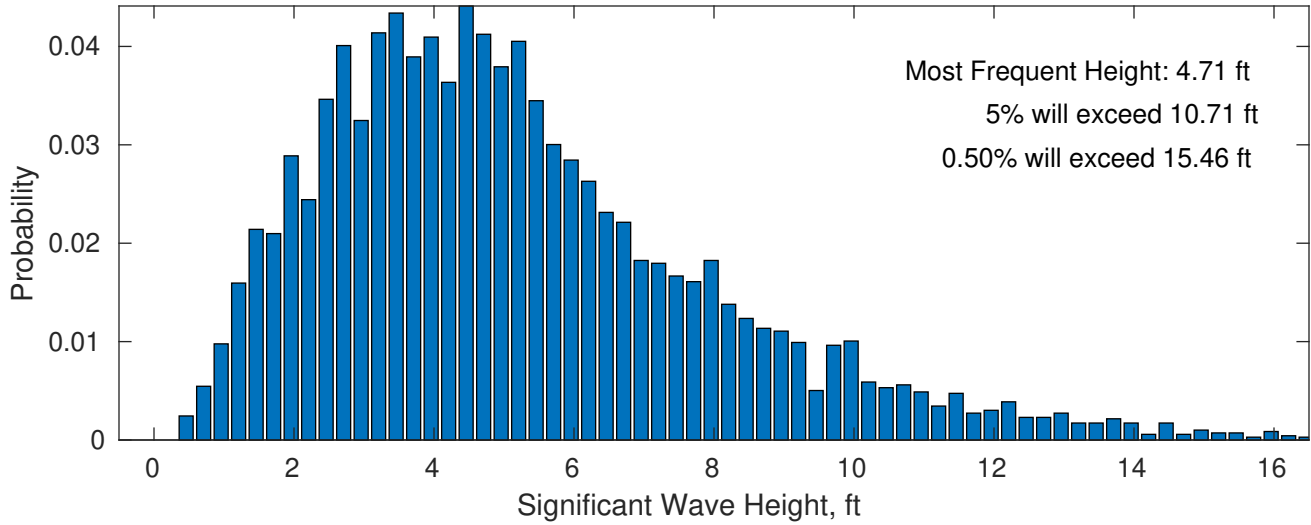
There is a 41 % chance of a storm occurring in the month with winds peaking above 34 kts.

There is a 7 % chance of a storm occurring in the month with waves exceeding 3 m (10 ft) above the mean wave height.

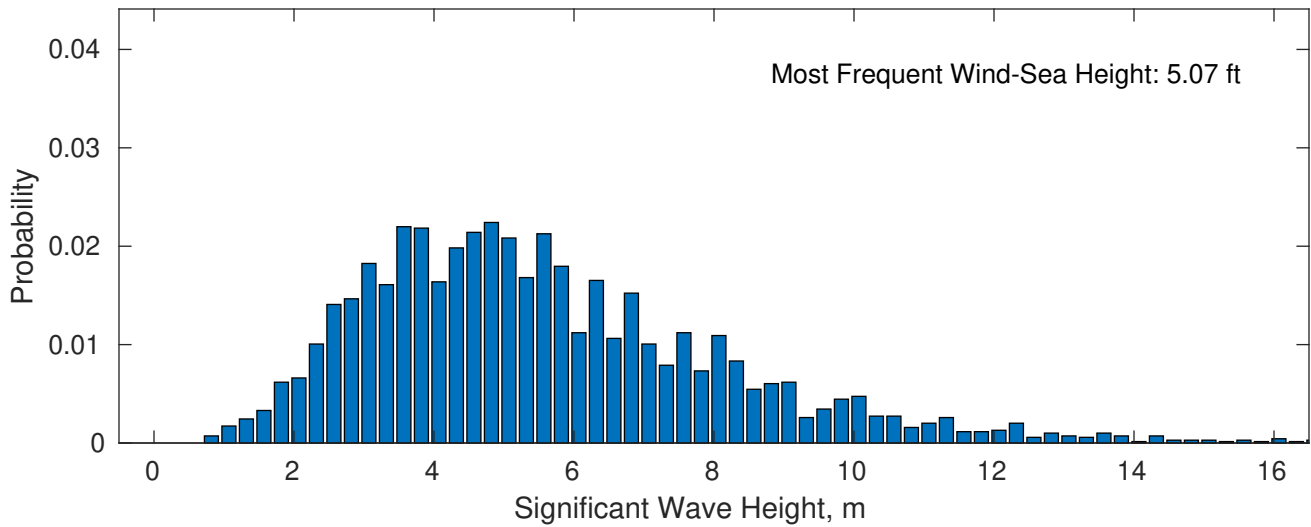




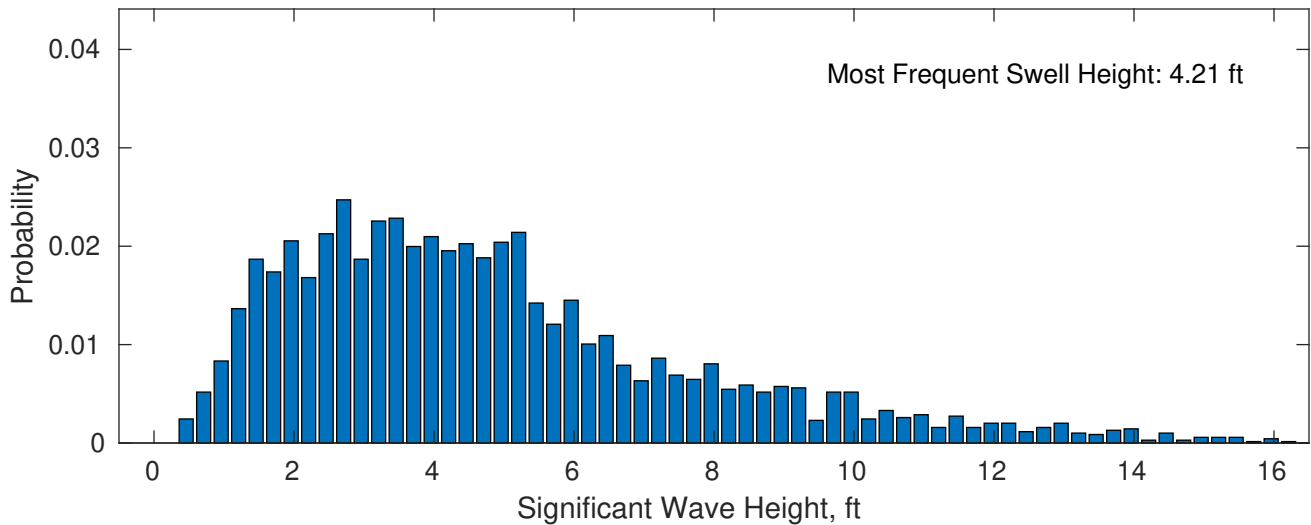
November Wave Height PDF: 1979 - 2015



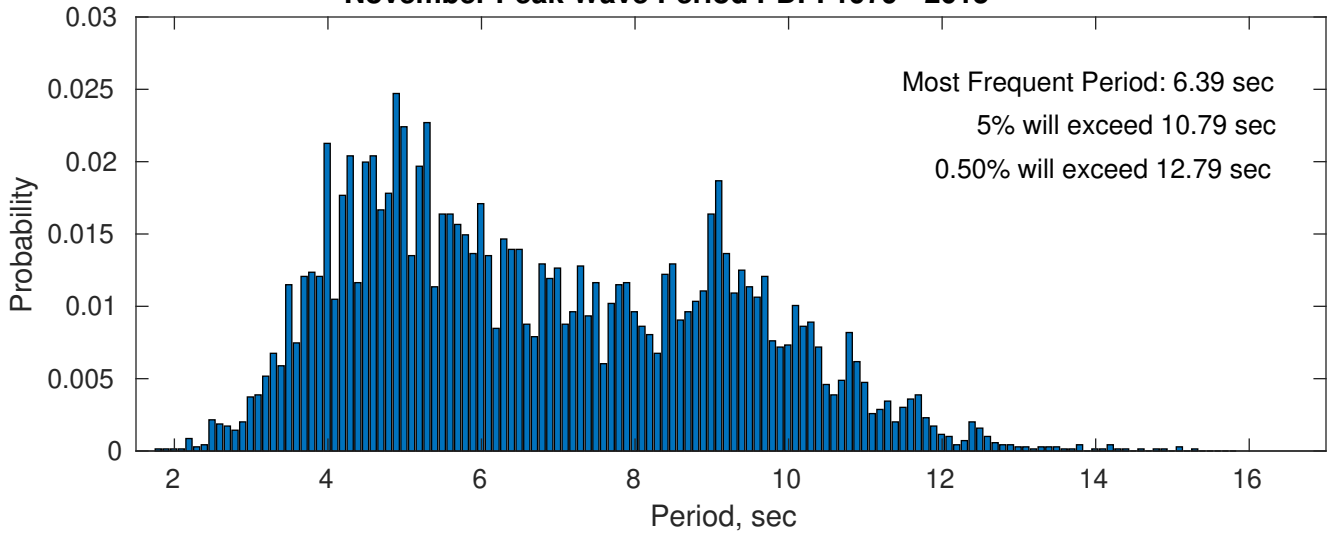
Wind-Sea: 46.32%



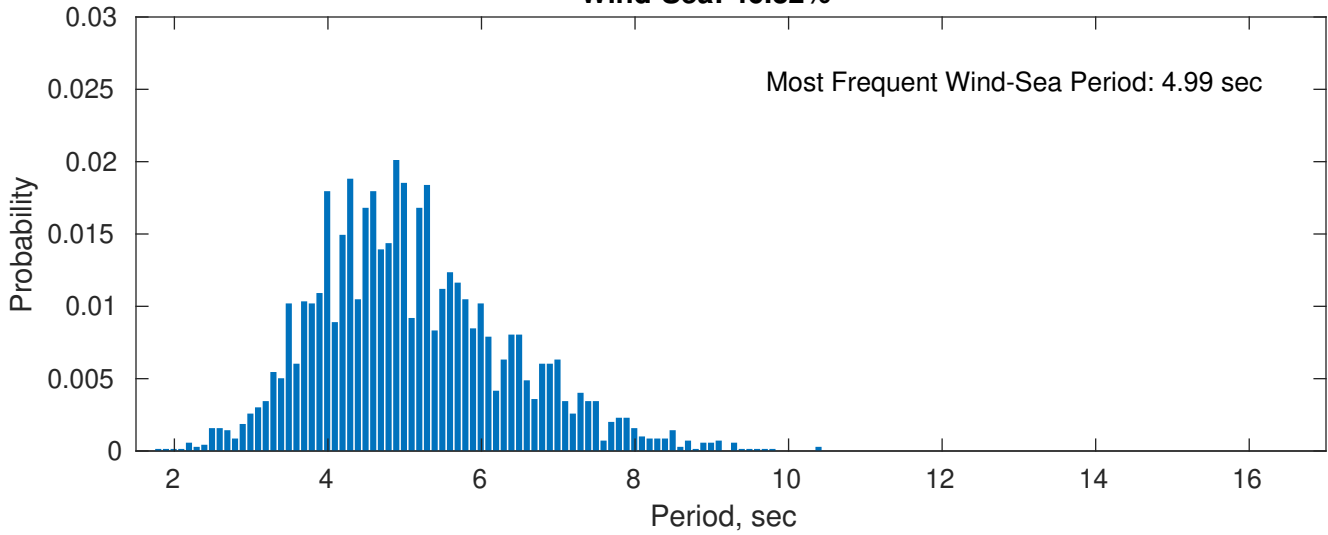
Swell: 53.68%



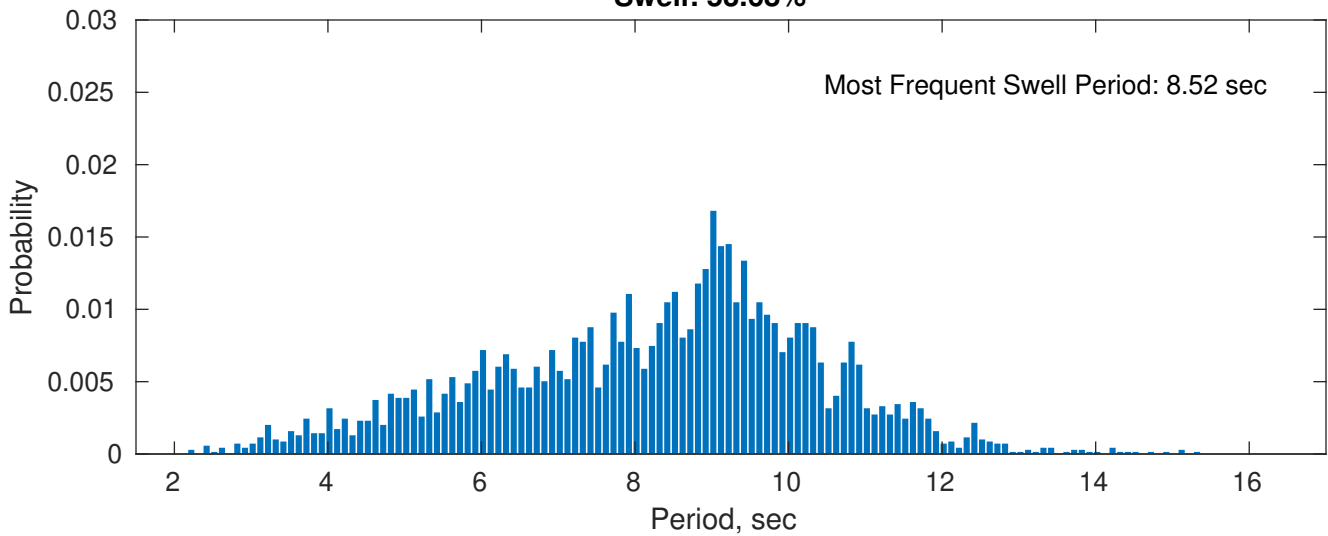
November Peak Wave Period PDF: 1979 - 2015



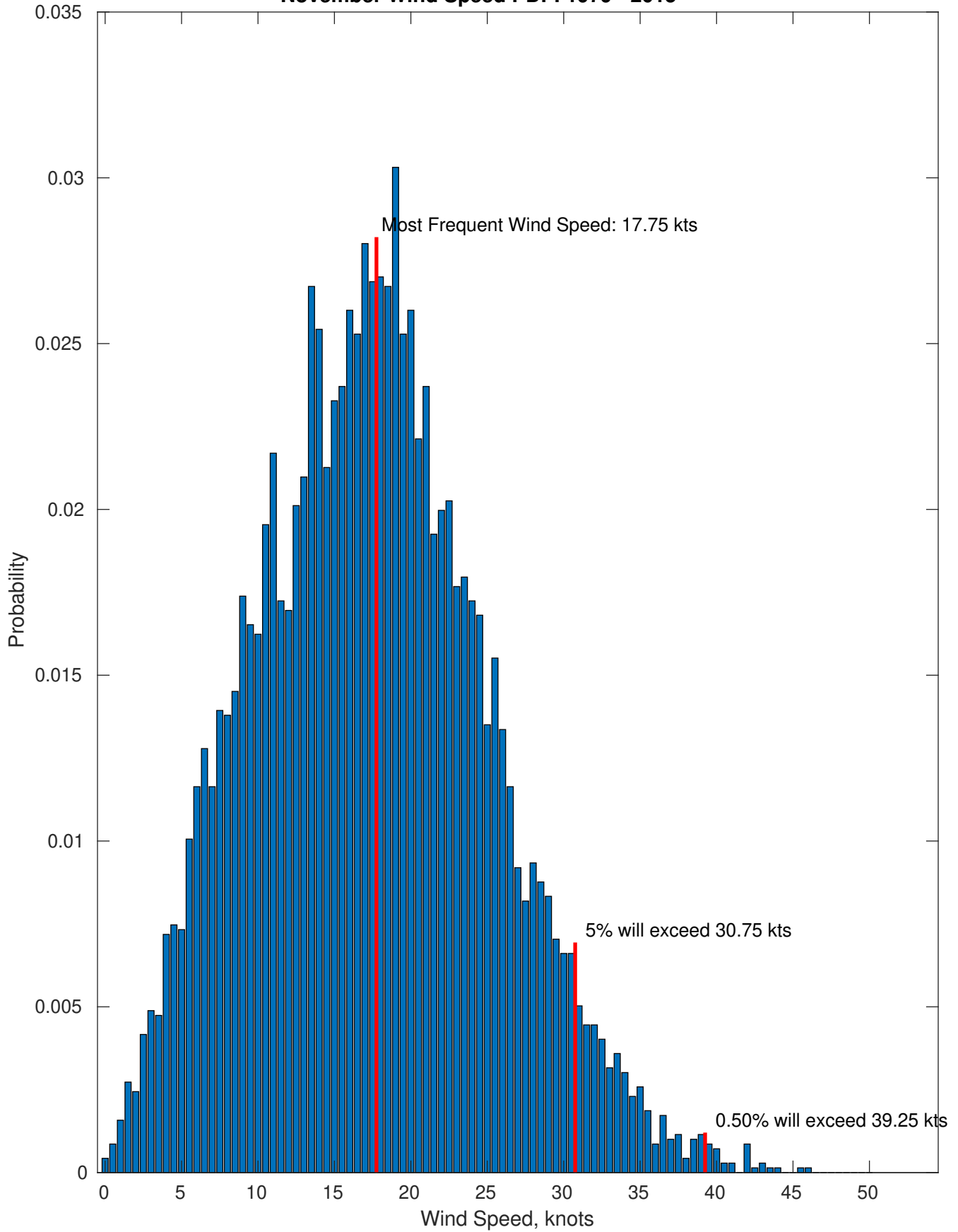
Wind-Sea: 46.32%



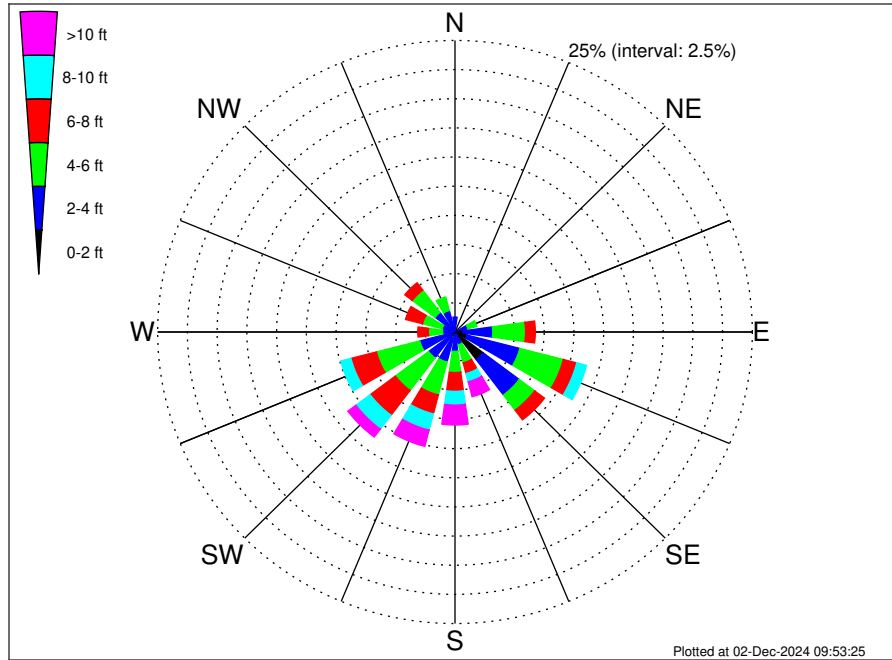
Swell: 53.68%



November Wind Speed PDF: 1979 - 2015



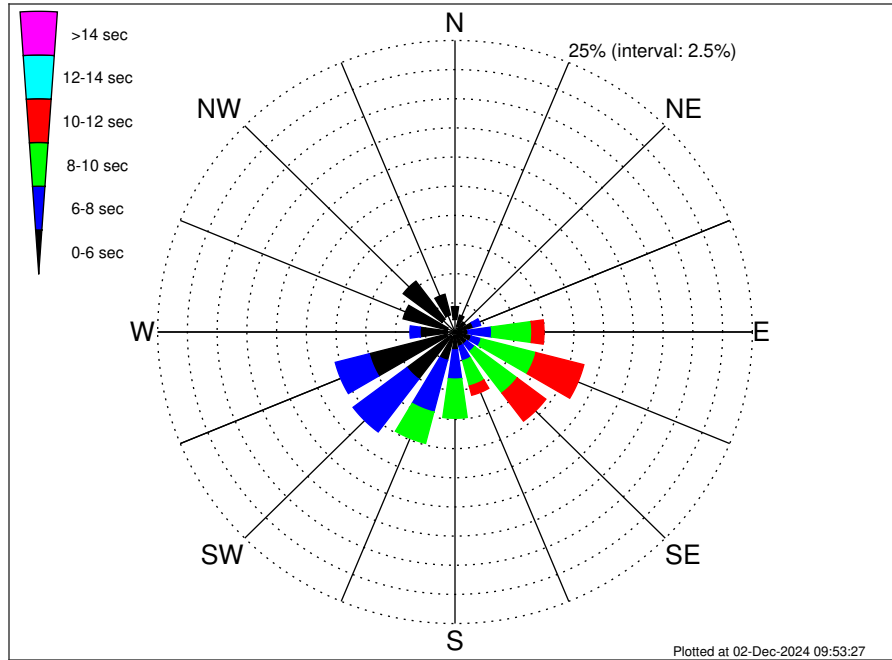
Long Island Wind Climatological WaveHeight Rose for November: 1979 - 2015



Joint Frequency Distribution Table

	N	NNE	NE	ENE	E	ESE	SE	SSE	S	SSW	SW	WSW	W	WNW	NW	NNW	Total
calm	0.01	•	•	0.07	0.03	0.11	0.47	0.04	•	0.06	0.01	0.01	•	•	•	0.07	0.91
1 - 2 ft	0.11	0.07	0.09	0.23	0.63	0.92	2.50	0.17	0.22	0.50	0.32	0.45	0.19	0.10	0.23	0.30	7.03
2 - 4 ft	1.15	0.57	0.40	0.82	2.51	4.60	3.79	0.92	1.45	2.10	2.46	2.60	0.86	1.01	1.87	1.52	28.64
4 - 6 ft	0.49	0.47	0.40	0.78	2.76	3.78	1.62	1.59	1.81	2.92	3.49	3.76	1.19	1.71	2.40	1.21	30.39
6 - 8 ft	0.36	0.26	0.14	0.45	0.82	1.16	1.03	0.95	1.61	1.68	2.66	2.21	0.89	1.48	0.79	0.23	16.72
8 - 10 ft	0.06	0.16	0.07	0.11	0.40	0.85	0.55	0.73	1.18	1.44	1.49	0.89	0.40	0.49	0.22	0.01	9.05
10 - 12 ft	•	0.04	0.01	0.10	0.30	0.10	0.19	0.49	0.96	0.86	0.50	0.33	0.22	0.04	•	0.01	4.17
12 - 14 ft	0.01	•	•	•	0.04	0.16	0.07	0.45	0.46	0.34	0.24	0.19	0.04	0.01	•	•	2.03
14 - 16 ft	•	•	•	•	•	0.03	•	0.26	0.16	0.14	0.07	0.01	•	•	•	•	0.68
16 - 18 ft	•	0.03	•	•	•	•	•	0.06	0.09	0.07	0.03	•	•	•	•	•	0.27
> 18 ft	•	•	•	•	•	•	•	0.07	0.04	0.01	•	•	•	•	•	•	0.13
Total	2.20	1.61	1.12	2.56	7.50	11.71	10.23	5.73	7.97	10.13	11.28	10.46	3.79	4.84	5.50	3.36	100.00

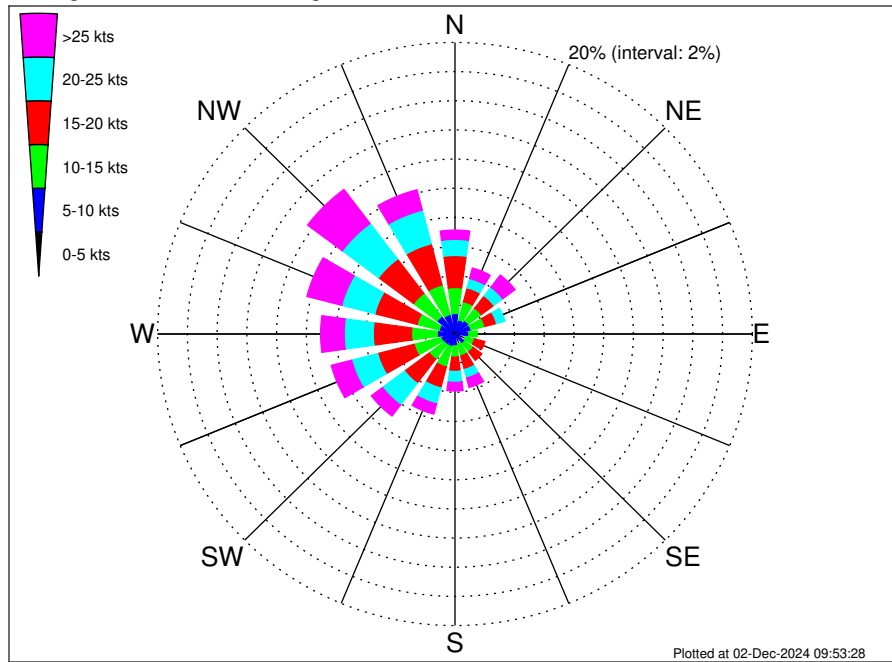
Long Island Wind Climatological WavePeriod Rose for November: 1979 - 2015



Joint Frequency Distribution Table

	N	NNE	NE	ENE	E	ESE	SE	SSE	S	SSW	SW	WSW	W	WNW	NW	NNW	Total
calm	•	•	•	•	•	•	•	•	•	•	•	•	•	•	•	•	•
1 - 2 sec	•	•	•	•	•	•	0.01	•	•	•	0.01	•	•	•	•	•	0.03
2 - 4 sec	1.08	0.55	0.36	0.36	0.23	0.22	0.26	0.37	0.30	0.46	0.45	0.76	0.63	0.68	1.36	1.51	9.57
4 - 6 sec	1.11	0.95	0.72	1.24	0.88	1.21	0.98	0.89	1.24	2.05	4.61	6.70	2.31	3.84	4.09	1.84	34.64
6 - 8 sec	0.01	0.11	0.04	0.63	1.98	0.86	0.82	1.28	2.50	4.58	5.66	2.95	0.85	0.33	0.04	0.01	22.67
8 - 10 sec	•	•	•	0.32	3.38	4.76	4.48	2.24	3.36	2.77	0.55	0.06	•	•	•	•	21.91
10 - 12 sec	•	•	•	0.01	1.02	4.15	3.02	0.82	0.56	0.26	•	•	•	•	•	•	9.84
12 - 14 sec	•	•	•	•	0.01	0.49	0.52	0.11	0.01	•	•	•	•	•	•	•	1.15
14 - 16 sec	•	•	•	•	•	0.03	0.14	0.01	•	•	•	•	•	•	•	•	0.19
18 - 20 sec	•	•	•	•	•	•	•	•	•	•	•	•	•	•	•	•	•
22 - 24 sec	•	•	•	•	•	•	•	•	•	•	•	•	•	•	•	•	•
Total	2.20	1.61	1.12	2.56	7.50	11.71	10.23	5.73	7.97	10.13	11.28	10.46	3.79	4.84	5.50	3.36	100.00

Long Island Wind Climatological Wind Rose for November: 1979 - 2015



Joint Frequency Distribution Table

	N	NNE	NE	ENE	E	ESE	SE	SSE	S	SSW	SW	WSW	W	WNW	NW	NNW	Total
calm	0.01	•	•	0.01	•	0.03	•	0.01	0.01	0.01	•	•	•	0.03	•	•	0.13
0 - 5 kts	0.20	0.17	0.22	0.36	0.14	0.20	0.22	0.22	0.06	0.16	0.20	0.20	0.24	0.19	0.42	0.33	3.52
5 - 10 kts	1.19	0.83	0.92	0.75	0.79	0.49	0.60	0.46	0.75	0.72	0.70	0.78	0.95	0.89	1.09	1.05	12.96
10 - 15 kts	1.78	1.29	1.08	0.96	0.56	0.65	0.72	0.86	0.78	1.45	1.26	1.87	1.74	1.54	1.98	2.10	20.62
15 - 20 kts	2.20	0.98	1.06	0.80	0.40	0.70	0.72	0.96	0.98	1.48	2.07	2.53	2.57	2.93	2.95	2.92	26.25
20 - 25 kts	1.11	0.66	0.75	0.57	0.39	0.30	0.46	0.60	0.75	1.14	1.87	1.81	1.95	2.30	3.06	2.39	20.10
25 - 30 kts	0.36	0.33	0.55	0.19	0.16	0.22	0.26	0.37	0.40	0.49	0.65	0.95	1.01	1.28	2.07	1.22	10.49
30 - 35 kts	0.16	0.32	0.37	0.17	0.01	0.11	0.11	0.20	0.11	0.19	0.26	0.34	0.43	0.68	0.69	0.16	4.32
35 - 40 kts	0.09	0.06	0.11	0.03	0.04	0.01	0.01	0.04	0.06	0.04	0.01	0.11	0.09	0.37	0.13	0.04	1.26
40 - 45 kts	•	•	•	•	0.01	0.01	•	0.04	0.01	•	0.01	•	0.06	0.09	0.03	0.01	0.29
45 - 50 kts	0.03	0.03	•	•	•	•	•	•	•	•	•	•	•	•	•	•	0.06
Total	7.13	4.67	5.06	3.85	2.51	2.73	3.10	3.78	3.91	5.68	7.04	8.59	9.04	10.29	12.41	10.22	100.00