

## Long Island Wind - September

Latitude: 40.90 N Longitude: 71.00 W

### Weather Days

Wave Height > 6.0 ft Mean: 3.7 days Range: 1.1 - 6.4 days p50:4.5 days p75:3 days p90:1.5 days

Wave Height > 7.0 ft Mean: 2.0 days Range: 0.3 - 3.7 days p50:2.5 days p75:2 days p90:0.5 days

Wave Height > 8.0 ft Mean: 1.2 days Range: 0.1 - 2.2 days p50:2 days p75:1.5 days p90:1 days

Wind Speed > 15.0 knots Mean: 10.5 days Range: 8.7 - 12.4 days p50:10.5 days p75:9.5 days p90:9 days

Wind Speed > 20.0 knots Mean: 3.9 days Range: 2.7 - 5.0 days p50:4 days p75:3.5 days p90:2.5 days

Wind Speed > 25.0 knots Mean: 1.0 days Range: 0.3 - 1.7 days p50:1.5 days p75:1 days p90:0.5 days

### Working Window

Wave Height < 6.0 ft  
A 1 day or longer window will statistically occur 3.5 times per month  
A 2 day or longer window will statistically occur 3.0 times per month  
A 3 day or longer window will statistically occur 2.5 times per month

Wave Height < 7.0 ft  
A 1 day or longer window will statistically occur 2.9 times per month  
A 2 day or longer window will statistically occur 2.4 times per month  
A 3 day or longer window will statistically occur 2.1 times per month

Wave Height < 8.0 ft  
A 1 day or longer window will statistically occur 2.1 times per month  
A 2 day or longer window will statistically occur 1.9 times per month  
A 3 day or longer window will statistically occur 1.7 times per month

### Waves

Mean Height: 2 - 4 ft

The wave heights will occasionally reach 10 - 12 ft, but rarely higher.

Mean Period: 8 - 10 sec

The wave periods will occasionally reach 14 - 16 sec, but rarely longer.

Principle Direction, from: SE

WindSea/Swell: 24% / 76%

### Winds

Mean Speed: 10 - 15 kts

The winds will occasionally reach 30 - 35 kts, but rarely greater.

Principle Direction, from: WSW

### Currents

Mean Speed: 0.25-0.50 kts

The currents will occasionally reach 1.00-1.25 kts, but rarely greater.

Principle Direction, to: E

### Weather Days

Current Speed > 1.0 knots Mean: 0.2 days Range: 0.0 - 0.7 days p50:1 days p75:1 days p90:1 days

Current Speed > 1.5 knots Mean: 0.1 days Range: 0.0 - 0.3 days p50:1 days p75:1 days p90:1 days

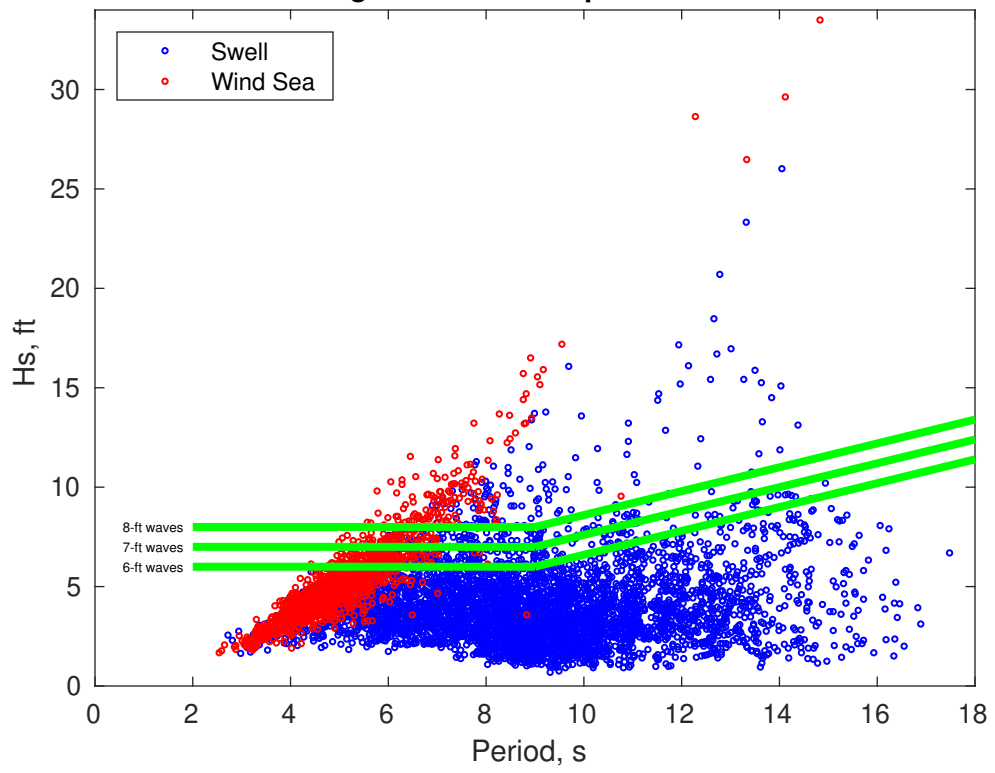
Current Speed > 2.0 knots Mean: 0.0 days Range: 0.0 - 0.0 days p50:1 days p75:1 days p90:1 days

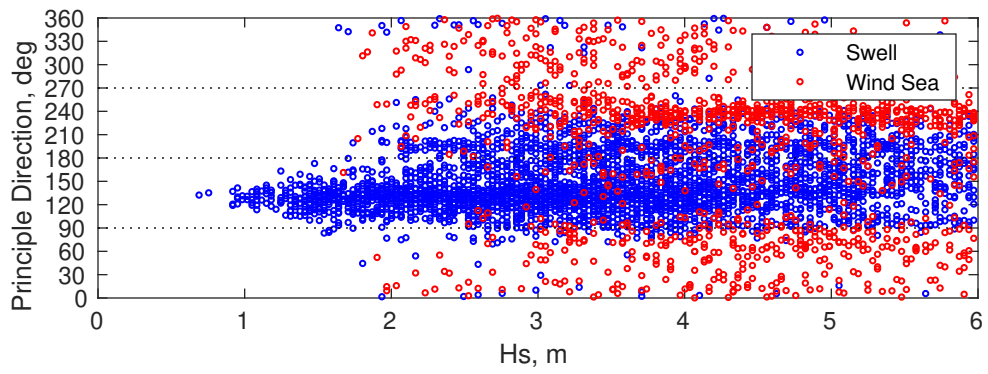
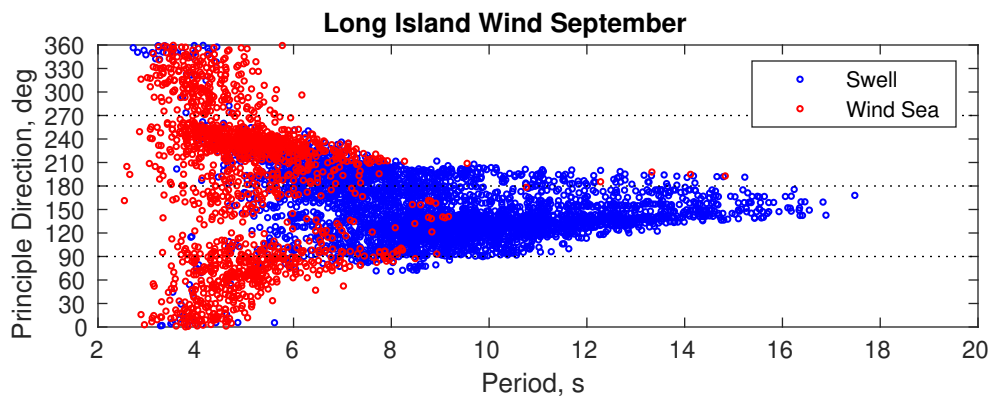
### Severe Storms

There is a 11 % chance of a storm occurring in the month with winds peaking above 34 kts.

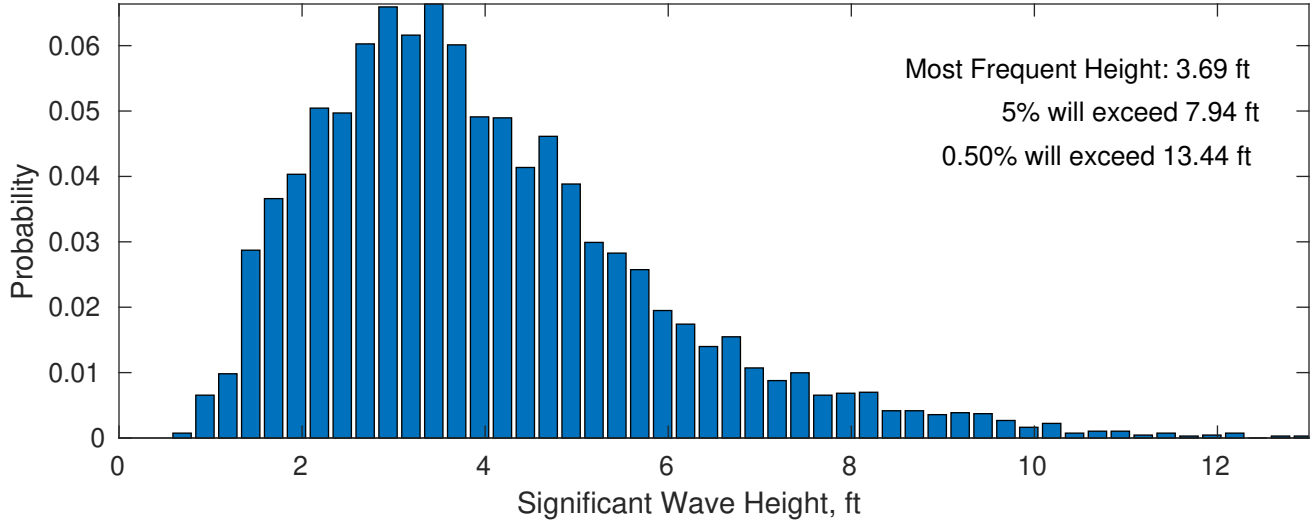
There is a 11 % chance of a storm occurring in the month with waves exceeding 3 m (10 ft) above the mean wave height.

### Long Island Wind September

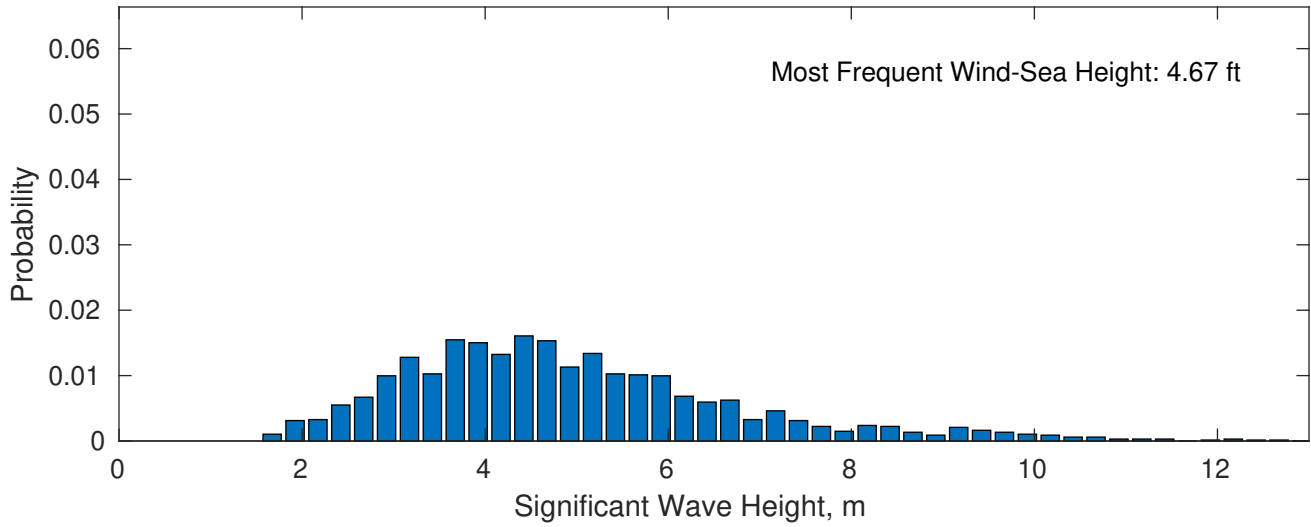




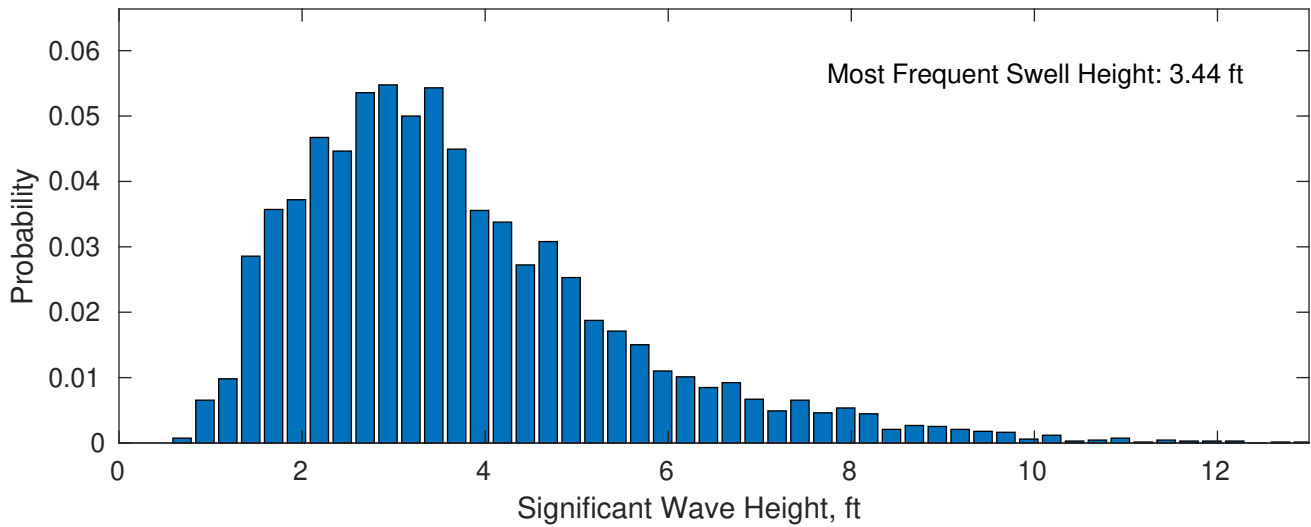
**September Wave Height PDF: 1979 - 2015**



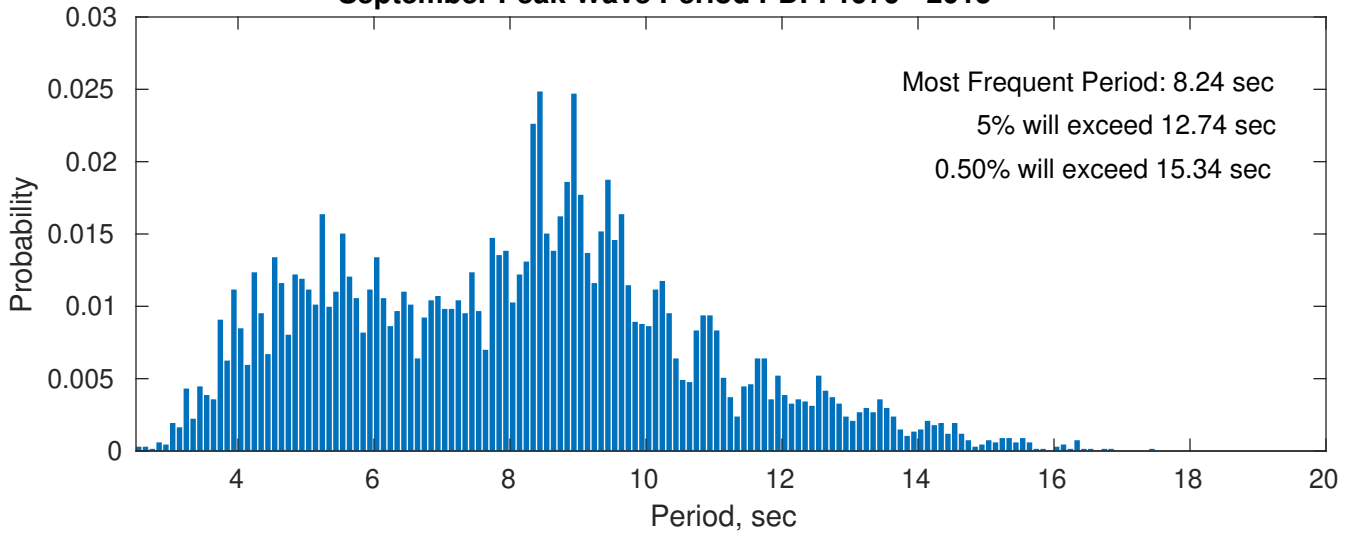
**Wind-Sea: 23.60%**



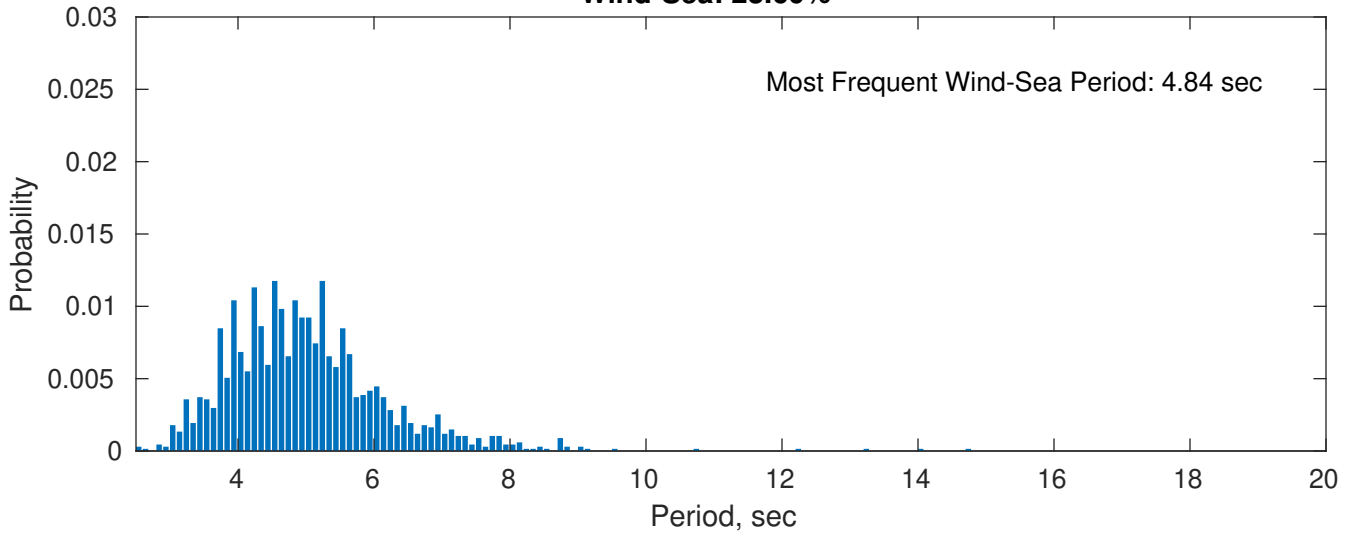
**Swell: 76.40%**



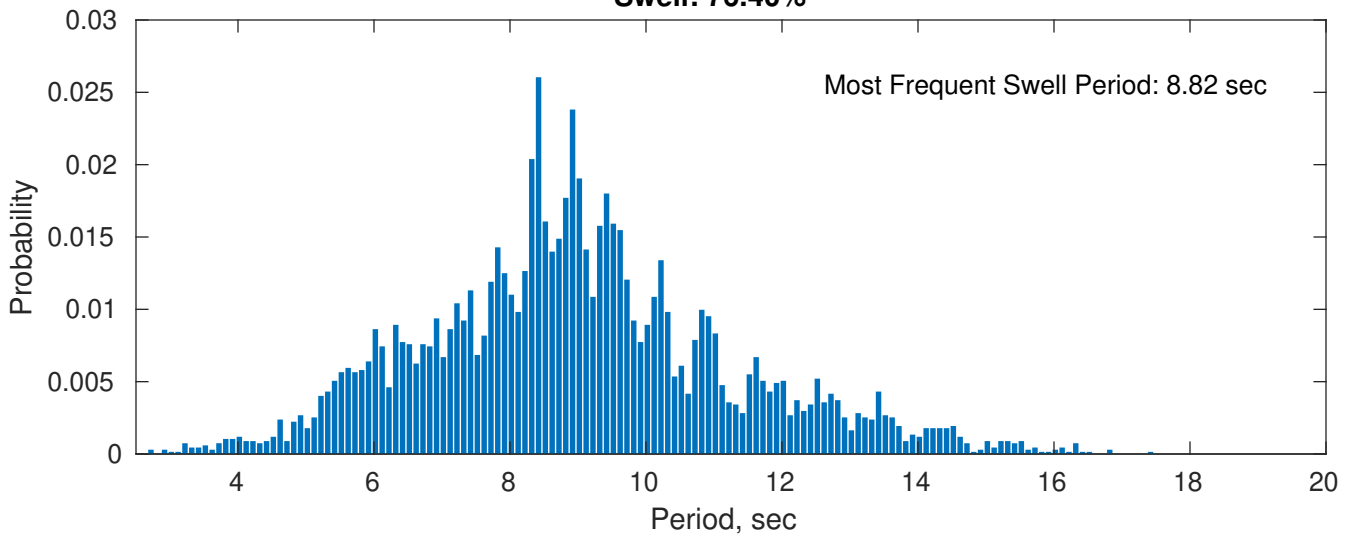
### September Peak Wave Period PDF: 1979 - 2015



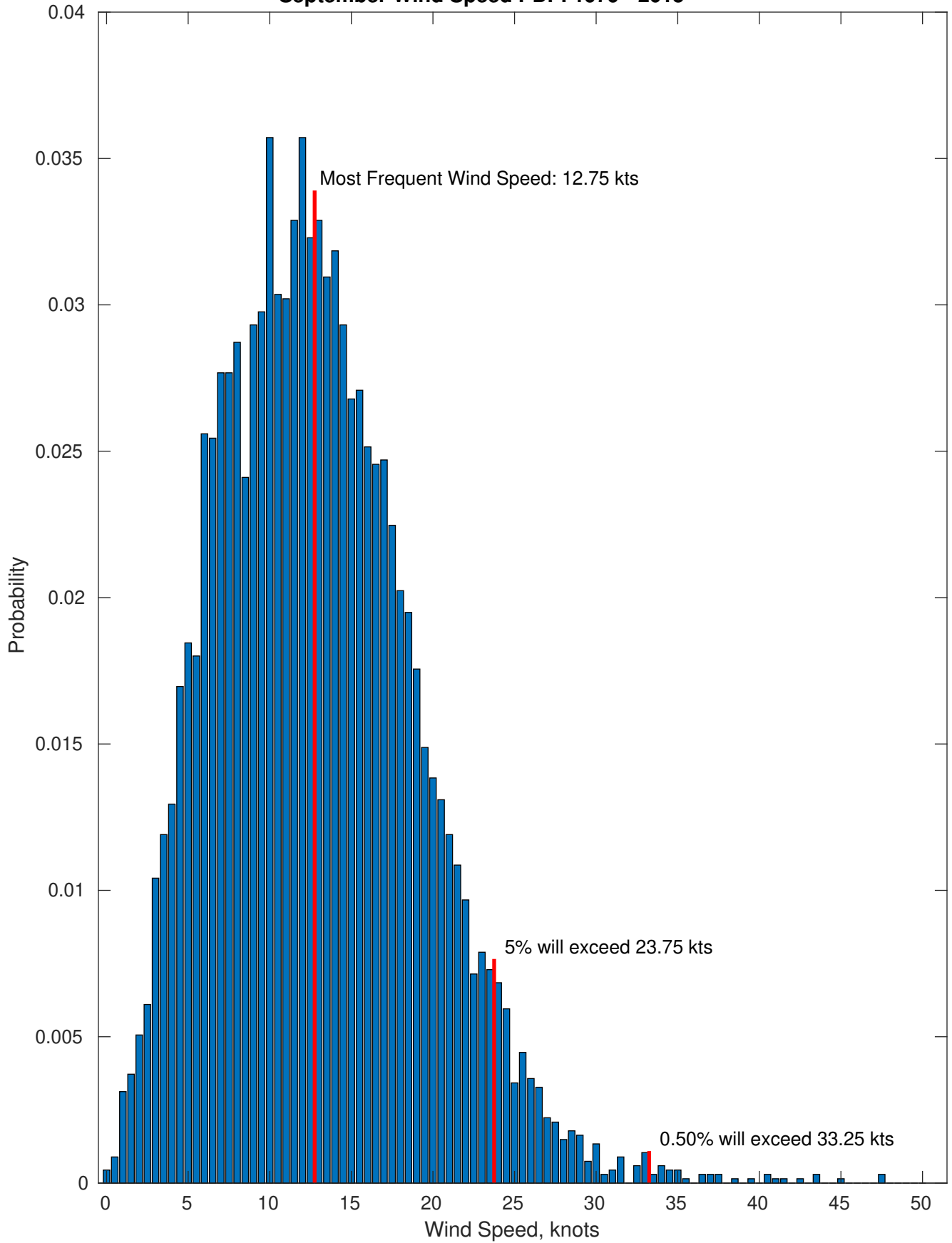
### Wind-Sea: 23.60%



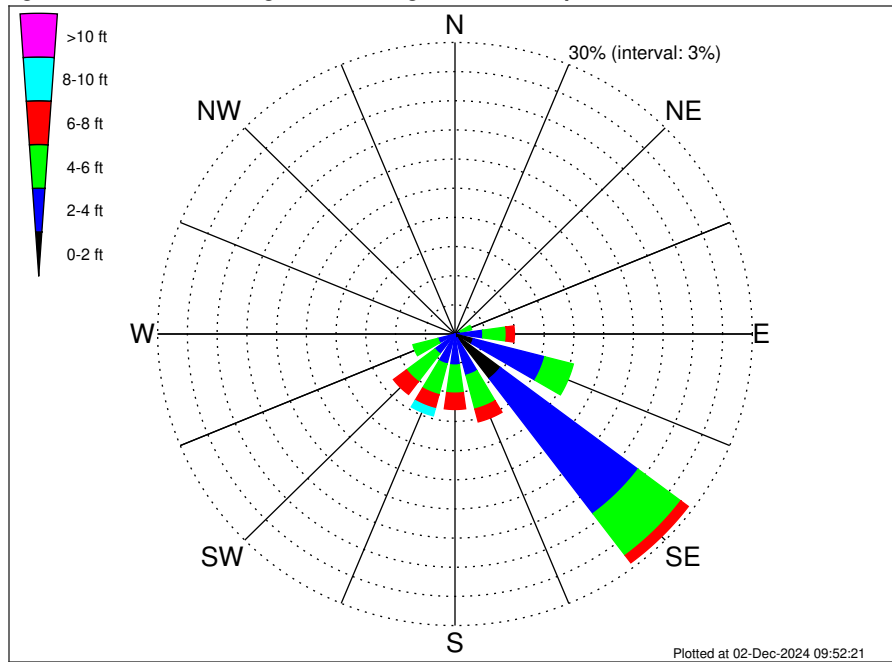
### Swell: 76.40%



September Wind Speed PDF: 1979 - 2015



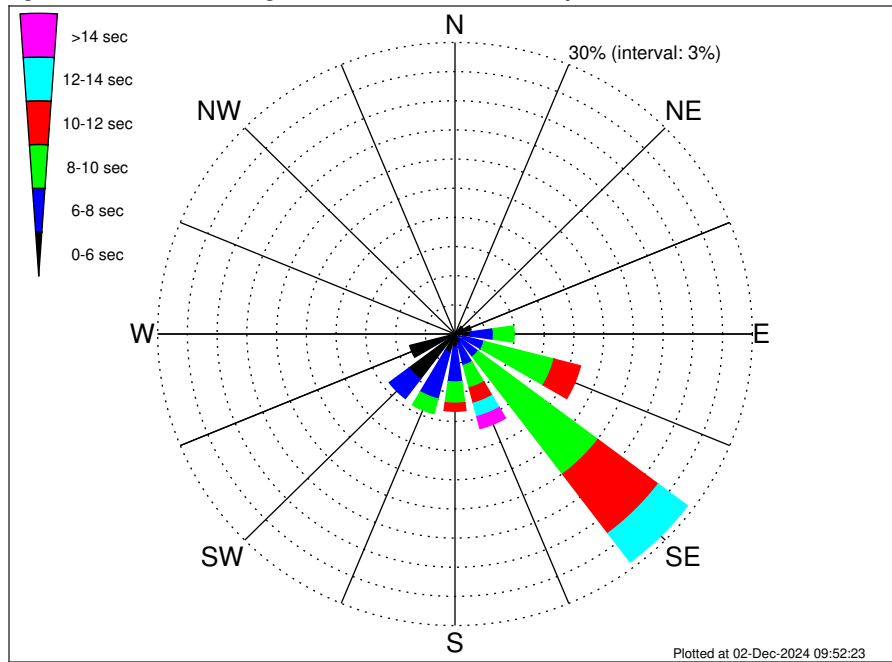
Long Island Wind Climatological WaveHeight Rose for September: 1979 - 2015



Joint Frequency Distribution Table

	N	NNE	NE	ENE	E	ESE	SE	SSE	S	SSW	SW	WSW	W	WNW	NW	NNW	Total
calm	•	•	•	•	•	0.06	0.13	•	•	•	•	•	•	•	•	•	0.19
1 - 2 ft	0.04	0.01	0.03	0.01	0.27	1.86	5.61	0.46	0.06	0.09	0.03	0.03	•	•	0.03	0.06	8.60
2 - 4 ft	0.62	0.34	0.31	0.58	2.54	7.44	17.40	3.93	3.14	3.10	2.51	1.76	0.45	0.54	0.60	0.48	45.73
4 - 6 ft	0.46	0.52	0.49	1.15	2.37	2.98	5.39	3.59	2.89	3.26	3.59	2.60	0.16	0.30	0.37	0.33	30.43
6 - 8 ft	0.03	0.10	0.15	0.27	0.82	0.58	0.95	1.37	1.68	1.49	1.65	0.54	0.13	0.09	0.06	0.10	10.01
8 - 10 ft	0.01	0.01	•	0.09	0.39	0.30	0.28	0.45	0.64	0.77	0.43	0.07	•	0.01	•	•	3.47
10 - 12 ft	•	•	0.03	0.03	0.04	0.01	0.03	0.07	0.21	0.28	0.09	•	•	•	•	•	0.80
12 - 14 ft	•	•	•	•	0.04	•	0.06	0.09	0.04	0.07	•	•	•	•	•	•	0.31
14 - 16 ft	•	•	•	•	•	•	0.07	0.04	0.10	•	•	•	•	•	•	•	0.22
16 - 18 ft	•	•	•	•	•	•	•	0.04	0.01	0.04	•	•	•	•	•	•	0.10
> 18 ft	•	•	•	•	•	•	•	•	0.04	0.07	•	•	•	•	•	•	0.12
Total	1.18	1.00	1.01	2.13	6.47	13.23	29.93	10.04	8.82	9.18	8.30	5.00	0.74	0.94	1.06	0.97	100.00

Long Island Wind Climatological WavePeriod Rose for September: 1979 - 2015

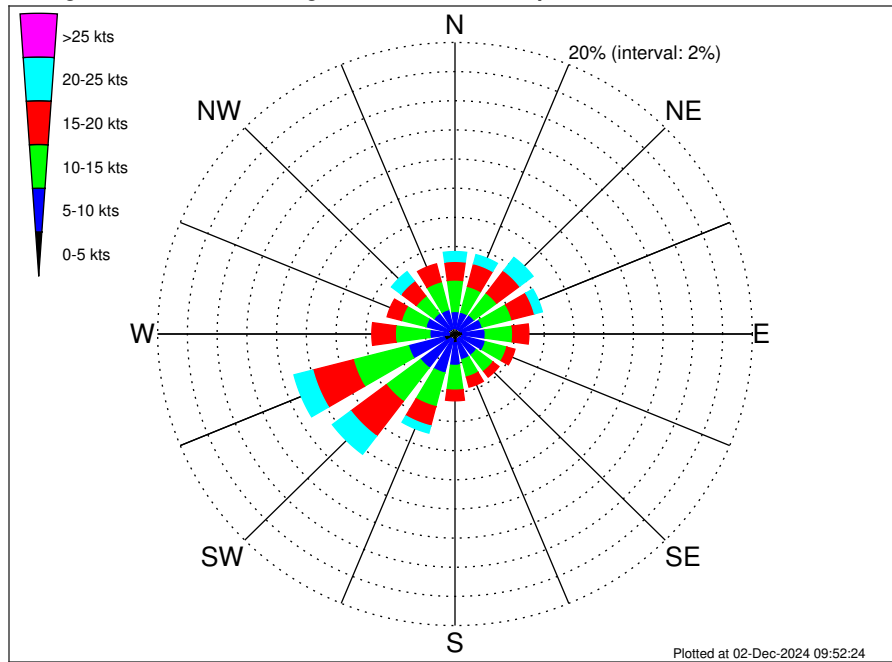


Joint Frequency Distribution Table

	N	NNE	NE	ENE	E	ESE	SE	SSE	S	SSW	SW	WSW	W	WNW	NW	NNW	Total
calm	•	•	•	•	•	•	•	•	•	•	•	•	•	•	•	•	•
1 - 2 sec	•	•	•	•	•	•	•	•	•	•	•	•	•	•	•	•	•
2 - 4 sec	0.71	0.42	0.22	0.10	0.21	0.12	0.01	0.10	0.12	0.18	0.28	0.57	0.24	0.31	0.57	0.51	4.67
4 - 6 sec	0.46	0.58	0.76	1.58	1.38	0.70	0.49	0.83	1.25	1.77	5.52	4.15	0.51	0.61	0.49	0.46	21.55
6 - 8 sec	•	•	0.03	0.28	2.29	2.22	2.43	2.40	3.57	4.96	2.50	0.28	•	0.01	•	•	20.97
8 - 10 sec	•	•	•	0.16	2.08	7.29	15.12	2.38	2.19	1.56	•	•	•	•	•	•	30.79
10 - 12 sec	•	•	•	•	0.51	2.75	7.62	1.64	0.82	0.48	•	•	•	•	•	•	13.81
12 - 14 sec	•	•	•	•	•	0.15	3.69	1.43	0.65	0.15	•	•	•	•	•	•	6.07
14 - 16 sec	•	•	•	•	•	•	0.52	1.09	0.21	0.09	•	•	•	•	•	•	1.90
18 - 20 sec	•	•	•	•	•	•	0.04	0.18	0.01	•	•	•	•	•	•	•	0.24
22 - 24 sec	•	•	•	•	•	•	•	•	•	•	•	•	•	•	•	•	•
Total	1.18	1.00	1.01	2.13	6.47	13.23	29.93	10.04	8.82	9.18	8.30	5.00	0.74	0.94	1.06	0.97	100.00



**Long Island Wind Climatological Wind Rose for September: 1979 - 2015**



**Joint Frequency Distribution Table**

	N	NNE	NE	ENE	E	ESE	SE	SSE	S	SSW	SW	WSW	W	WNW	NW	NNW	Total
calm	0.01	•	0.01	•	•	•	•	•	•	•	•	•	0.03	•	0.03	0.04	0.13
0 - 5 kts	0.39	0.37	0.36	0.42	0.54	0.48	0.37	0.39	0.61	0.39	0.39	0.74	0.37	0.49	0.37	0.36	7.02
5 - 10 kts	1.15	1.18	1.24	1.47	1.50	1.64	1.43	1.43	1.55	2.38	2.51	2.49	1.29	1.53	1.37	1.32	25.48
10 - 15 kts	2.16	1.83	1.90	2.07	1.85	1.49	1.40	1.24	1.70	2.38	2.89	3.84	2.32	1.70	1.49	1.98	32.22
15 - 20 kts	1.28	1.61	1.93	1.56	1.09	0.57	0.51	0.71	0.73	1.37	2.99	2.81	1.58	1.00	1.29	1.26	22.29
20 - 25 kts	0.67	0.64	1.13	0.55	0.31	0.10	0.12	0.19	0.33	0.51	1.55	1.31	0.43	0.33	0.80	0.48	9.45
25 - 30 kts	0.10	0.27	0.30	0.28	0.16	0.07	0.07	0.01	0.12	0.13	0.31	0.13	0.06	0.18	0.10	0.15	2.47
30 - 35 kts	•	0.03	0.12	0.03	0.09	0.04	0.01	0.03	0.01	0.03	0.01	0.06	•	0.01	0.06	0.04	0.60
35 - 40 kts	•	0.03	0.06	•	•	•	•	0.01	•	0.01	0.01	•	0.01	•	0.03	•	0.18
40 - 45 kts	0.01	0.03	•	•	•	•	0.01	•	0.03	•	•	0.01	•	•	•	•	0.10
45 - 50 kts	•	0.01	•	•	•	•	•	•	0.01	•	0.03	•	•	•	•	•	0.06
Total	5.77	6.00	7.05	6.38	5.54	4.39	3.93	4.02	5.09	7.20	10.70	11.40	6.10	5.24	5.55	5.64	100.00