

UK Cable Route GT - Berwick-upon-Tweed - August

Latitude: 55.81 N Longitude: 1.35 E

Weather Days

Wave Height > 6.0 ft Mean: 6.5 days Range: 3.4 - 9.6 days p50:7 days p75:4.5 days p90:2 days

Wave Height > 7.0 ft Mean: 4.3 days Range: 1.8 - 6.7 days p50:4.5 days p75:3 days p90:2 days

Wave Height > 8.0 ft Mean: 2.8 days Range: 1.0 - 4.6 days p50:3 days p75:1.5 days p90:1 days

Wind Speed > 15.0 knots Mean: 12.3 days Range: 8.4 - 16.2 days p50:13 days p75:10.5 days p90:7.5 days

Wind Speed > 20.0 knots Mean: 5.3 days Range: 2.6 - 8.0 days p50:5.5 days p75:4 days p90:1.5 days

Wind Speed > 25.0 knots Mean: 1.7 days Range: 0.4 - 3.0 days p50:1.5 days p75:1 days p90:0.5 days

Working Window

Wave Height < 6.0 ft
A 1 day or longer window will statistically occur 4.5 times per month
A 2 day or longer window will statistically occur 3.1 times per month
A 3 day or longer window will statistically occur 2.2 times per month

Wave Height < 7.0 ft
A 1 day or longer window will statistically occur 3.7 times per month
A 2 day or longer window will statistically occur 2.9 times per month
A 3 day or longer window will statistically occur 2.4 times per month

Wave Height < 8.0 ft
A 1 day or longer window will statistically occur 3.3 times per month
A 2 day or longer window will statistically occur 2.7 times per month
A 3 day or longer window will statistically occur 2.2 times per month

Waves

Mean Height: 2 - 4 ft

The wave heights will occasionally reach 12 - 14 ft, but rarely higher.

Mean Period: 4 - 6 sec

The wave periods will occasionally reach 10 - 12 sec, but rarely longer.

Principle Direction, from: N

WindSea/Swell: 45% / 55%

Winds

Mean Speed: 10 - 15 kts

The winds will occasionally reach 30 - 35 kts, but rarely greater.

Principle Direction, from: NNW

Currents

Mean Speed: 0.01-0.25 kts

The currents will occasionally reach 0.75-1.00 kts, but rarely greater.

Principle Direction, to: E

Weather Days

Current Speed > 1.0 knots Mean: 0.0 days Range: 0.0 - 0.0 days p50:1 days p75:1 days p90:1 days

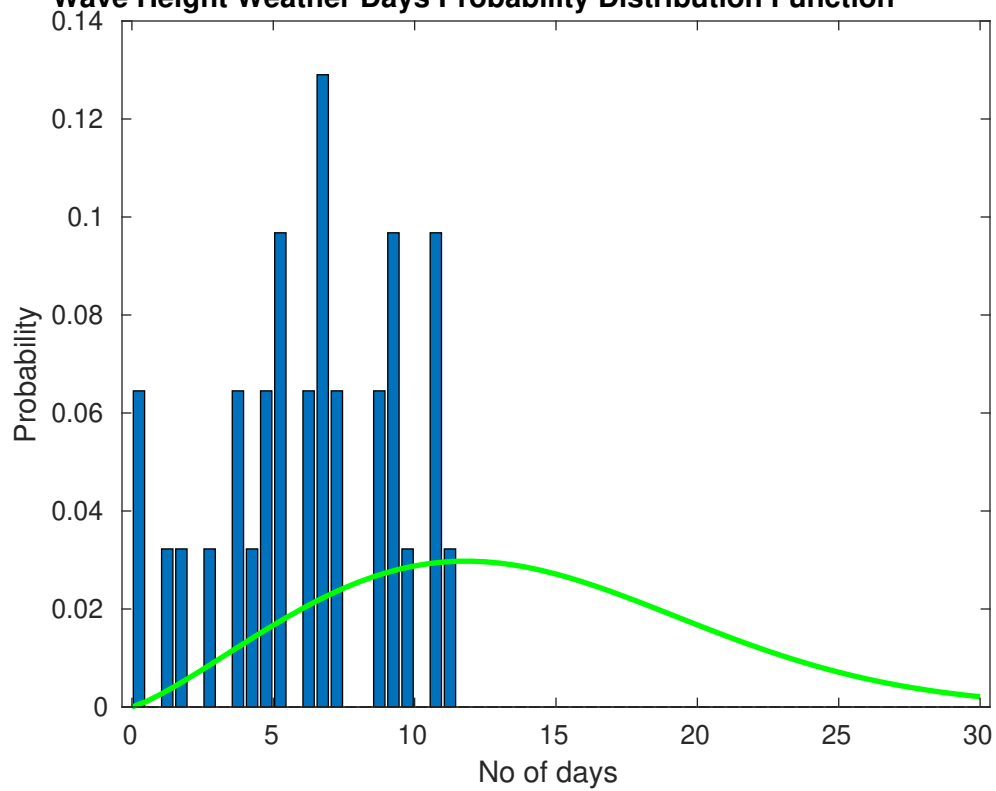
Current Speed > 1.5 knots Mean: 0.0 days Range: 0.0 - 0.0 days p50:1 days p75:1 days p90:1 days

Current Speed > 2.0 knots Mean: 0.0 days Range: 0.0 - 0.0 days p50:1 days p75:1 days p90:1 days

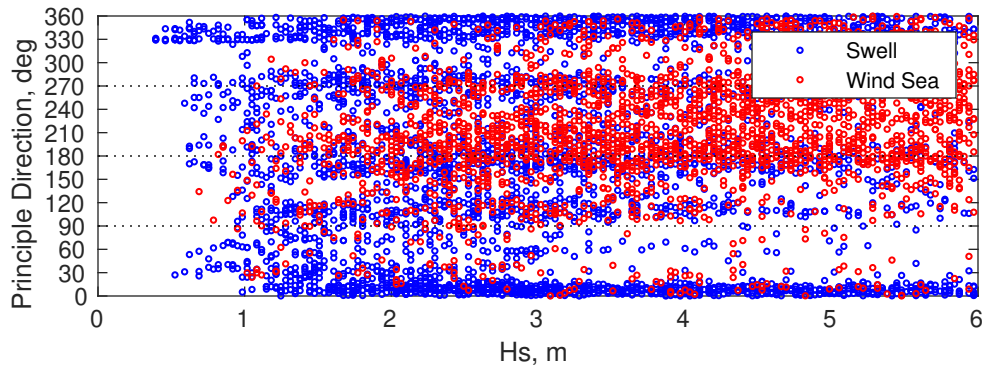
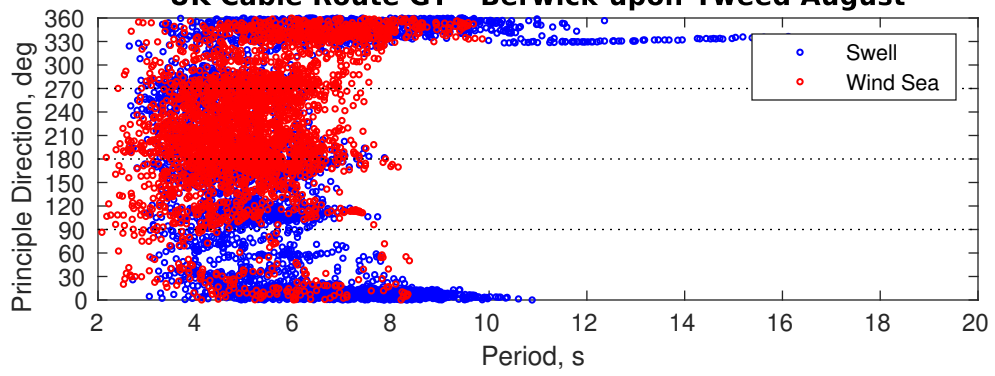
Severe Storms

Severe storms with gale force winds and extreme waves are not expected during this month.

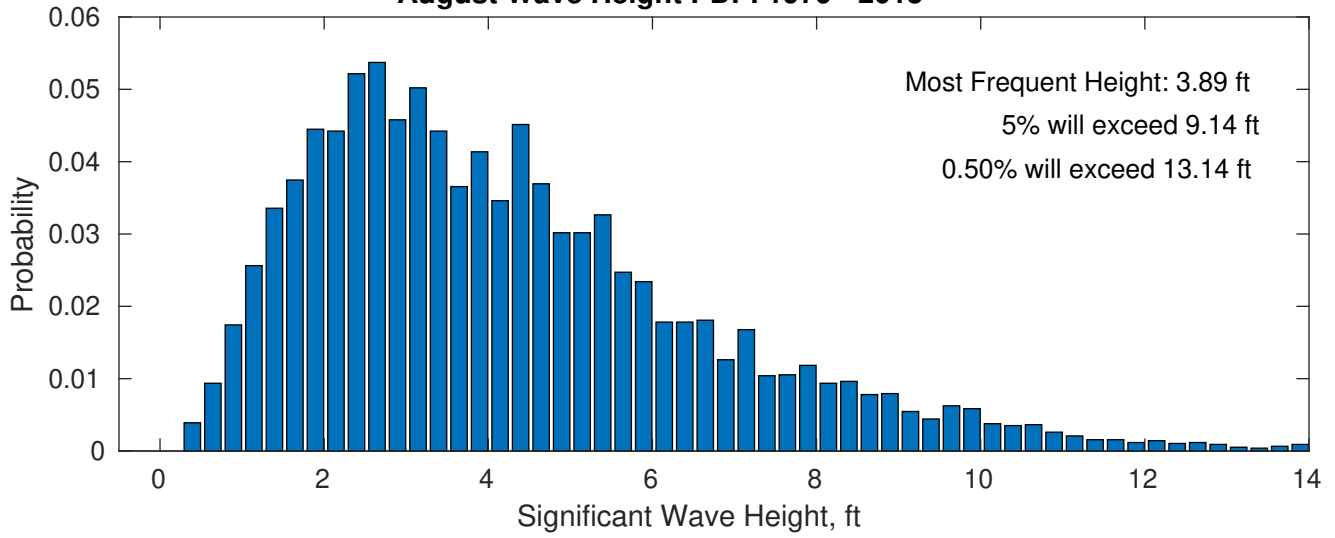
Wave Height Weather Days Probability Distribution Function



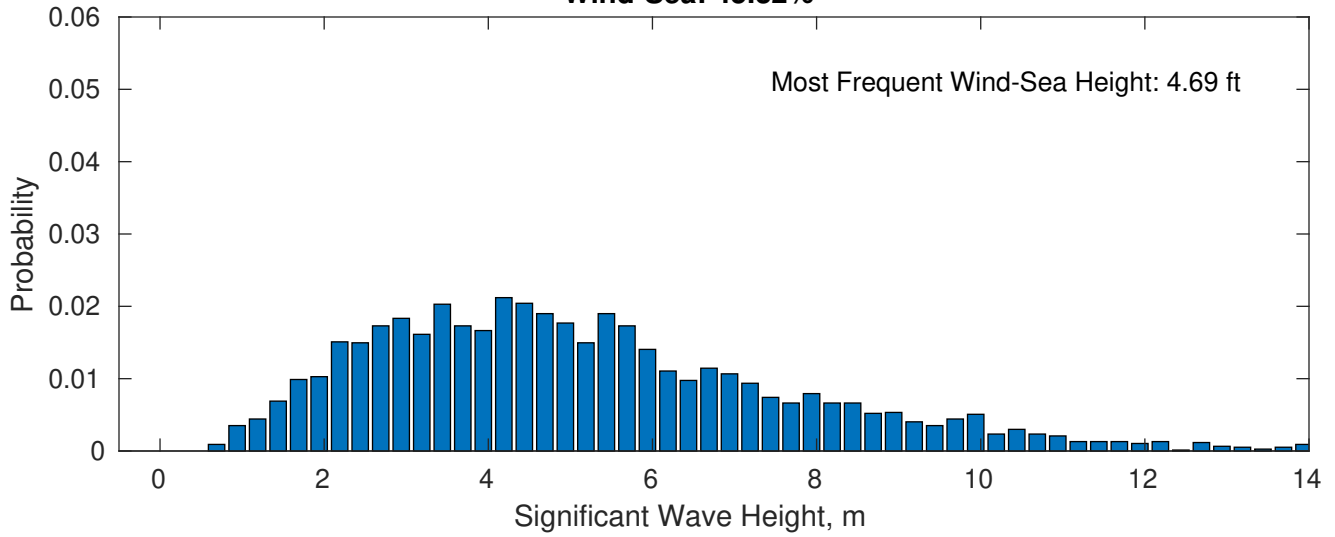
UK Cable Route GT - Berwick-upon-Tweed August



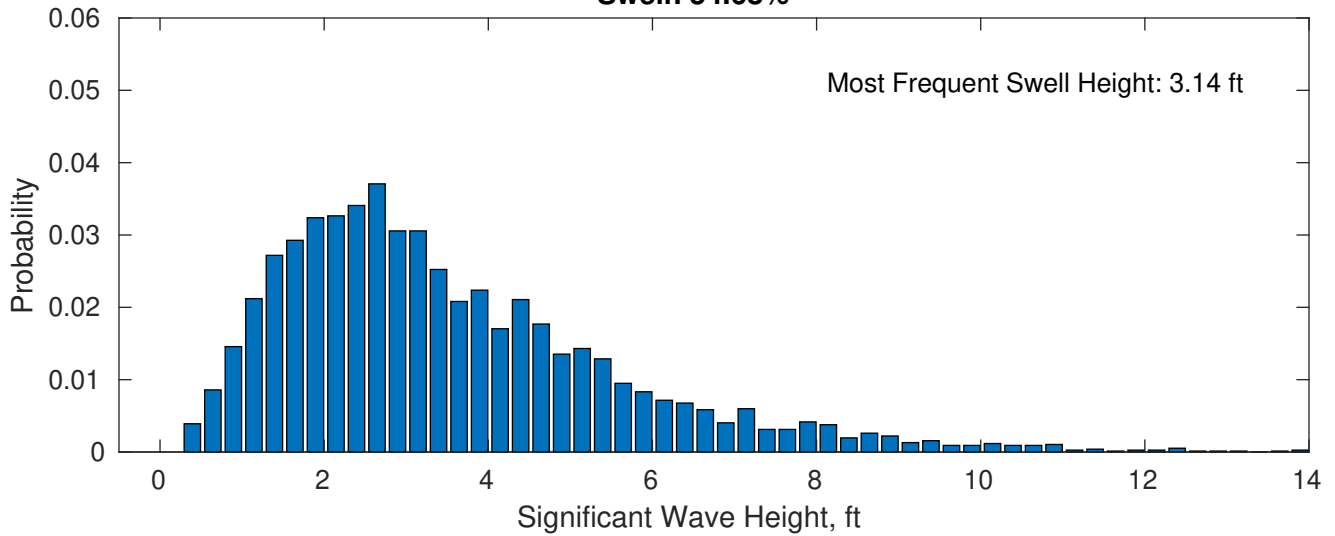
August Wave Height PDF: 1979 - 2015



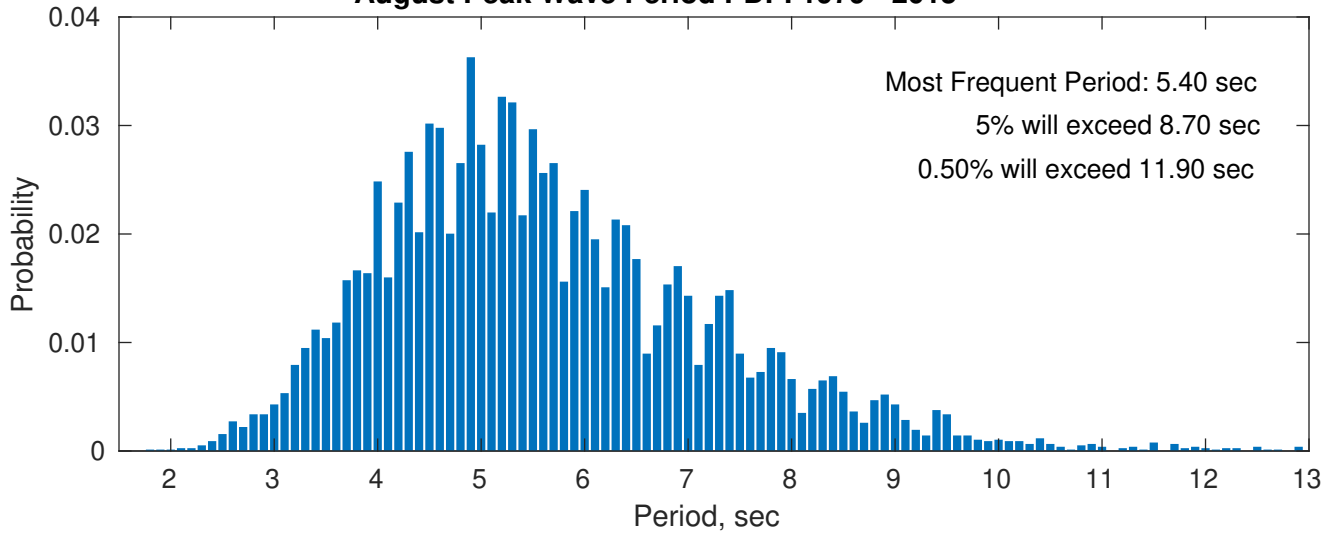
Wind-Sea: 45.32%



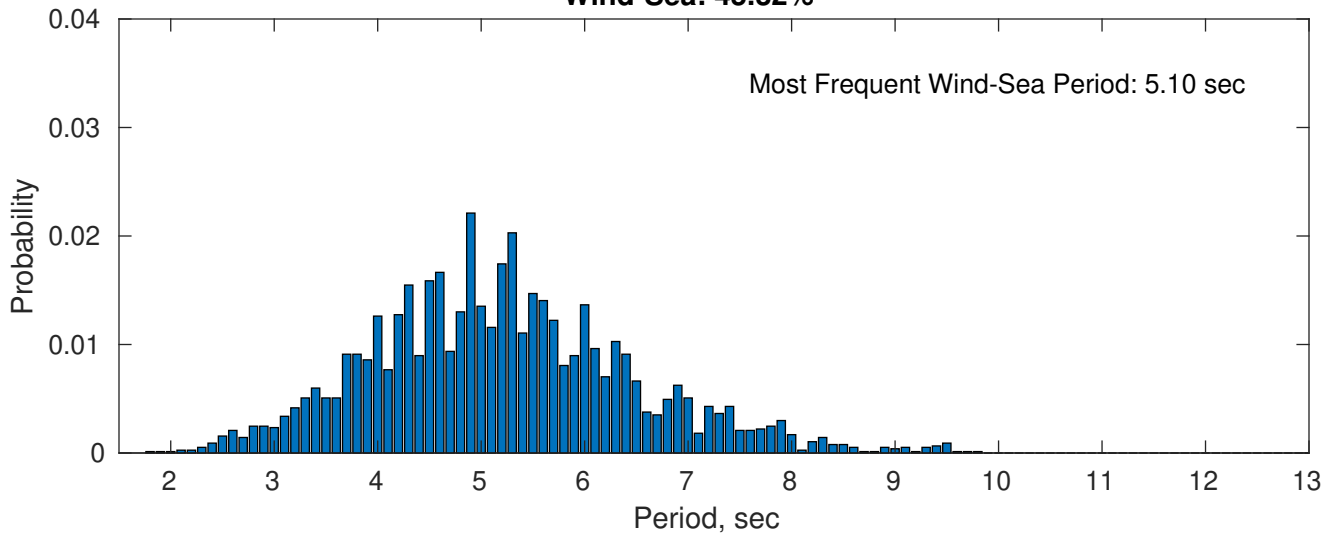
Swell: 54.68%



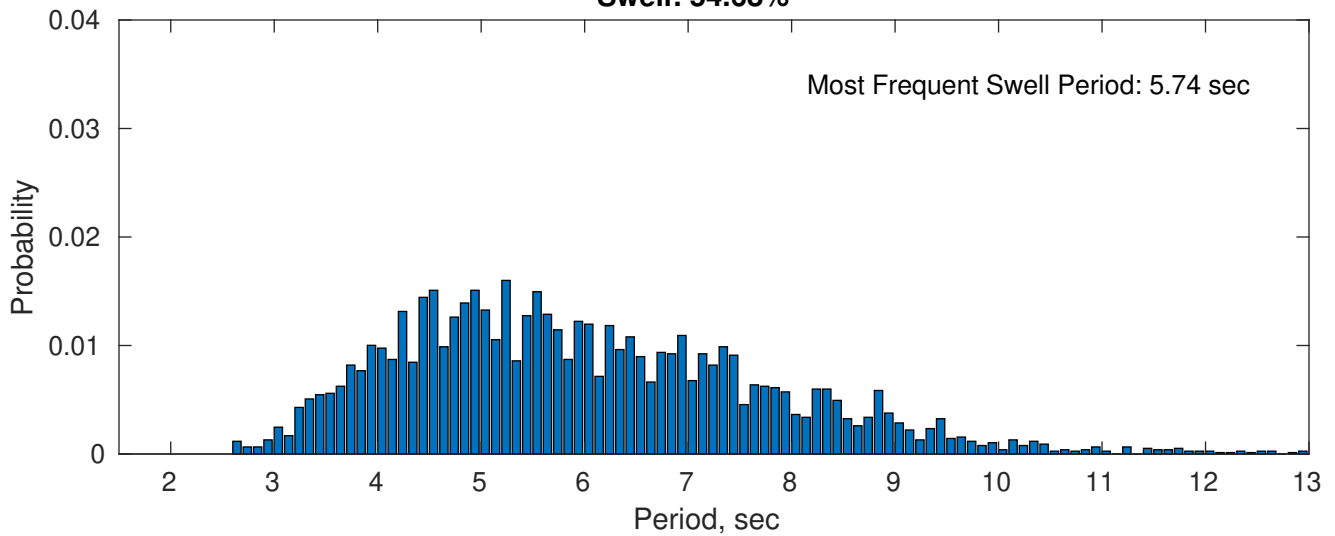
August Peak Wave Period PDF: 1979 - 2015



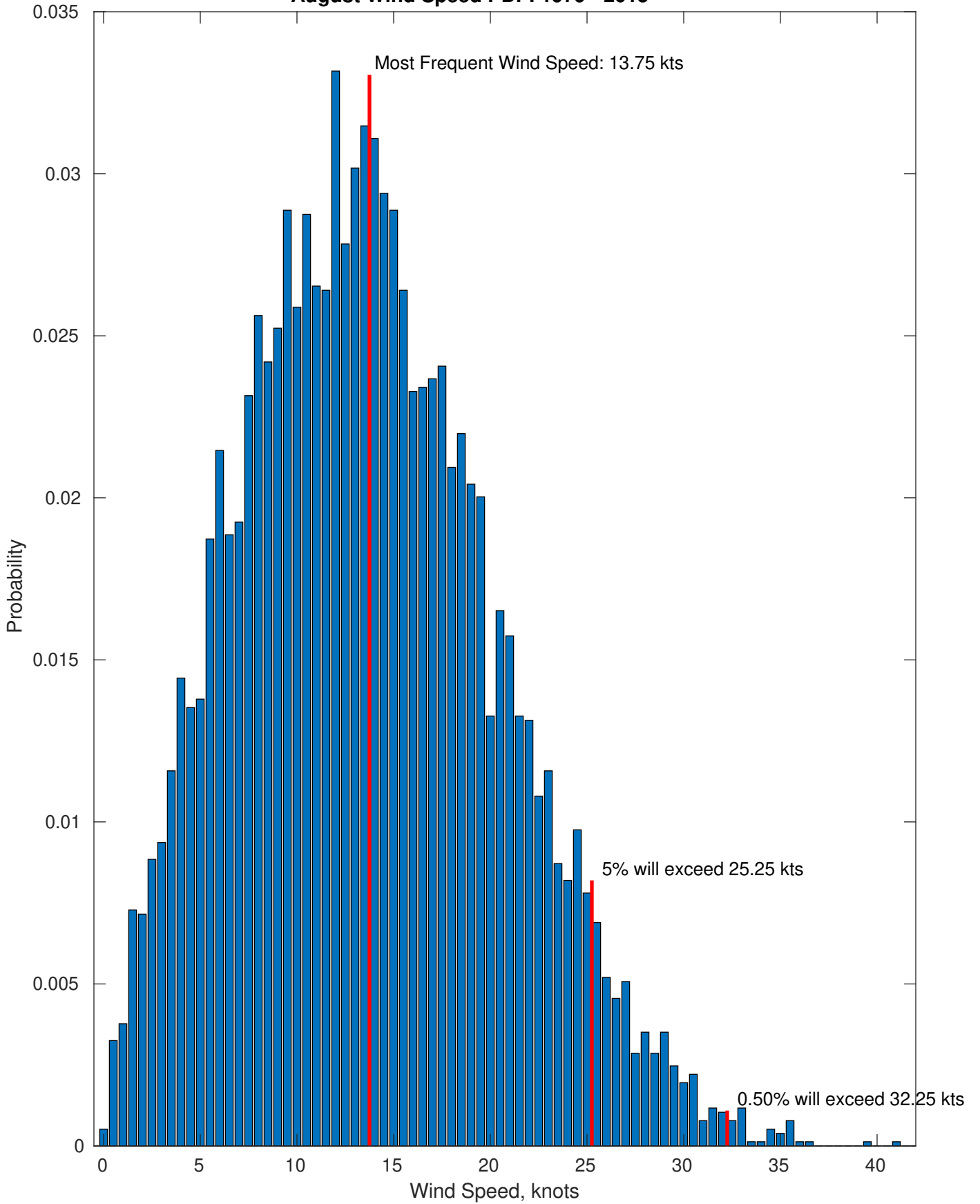
Wind-Sea: 45.32%



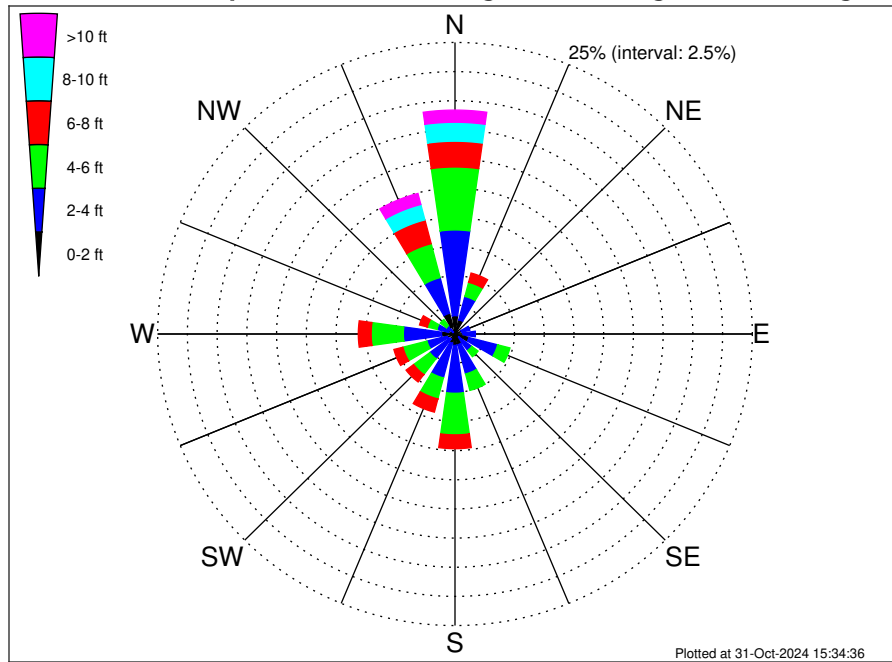
Swell: 54.68%



August Wind Speed PDF: 1979 - 2015



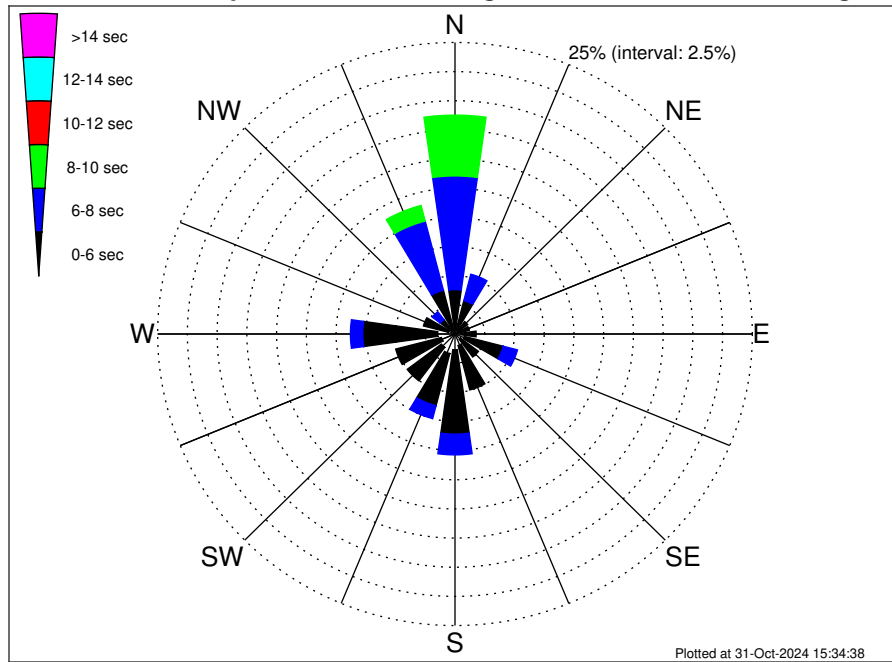
UK Cable Route GT - Berwick-upon-Tweed Climatological WaveHeight Rose for August: 1979 - 2015



Joint Frequency Distribution Table

	N	NNE	NE	ENE	E	ESE	SE	SSE	S	SSW	SW	WSW	W	WNW	NW	NNW	Total
calm	0.03	0.07	0.14	0.13	0.05	0.04	0.07	0.12	0.09	0.12	0.04	0.13	0.14	•	0.03	0.65	1.83
1 - 2 ft	1.55	1.20	0.61	0.46	0.62	1.17	0.33	0.83	0.88	0.70	0.51	0.55	0.99	0.56	0.20	1.18	12.33
2 - 4 ft	7.35	2.07	0.57	0.70	1.04	2.50	1.38	2.59	4.11	3.07	2.11	1.76	3.21	1.01	0.68	3.16	37.30
4 - 6 ft	5.40	1.25	0.14	0.20	0.17	1.07	0.66	1.46	3.56	1.86	1.70	2.09	2.71	0.83	0.65	3.00	26.76
6 - 8 ft	2.21	0.82	0.10	•	0.03	0.33	0.34	0.47	1.18	1.17	0.79	0.78	1.08	0.68	0.35	2.11	12.43
8 - 10 ft	1.63	0.38	0.08	0.04	•	0.21	0.01	0.09	0.35	0.48	0.18	0.20	0.59	0.17	0.26	1.37	6.02
10 - 12 ft	0.70	0.04	0.04	•	•	0.09	0.03	0.01	0.13	0.08	0.09	0.07	0.07	0.09	0.22	0.65	2.30
12 - 14 ft	0.23	0.07	0.04	0.01	0.01	0.03	•	0.01	0.08	0.01	0.01	0.03	0.01	•	0.01	0.14	0.70
14 - 16 ft	0.08	0.03	•	•	•	•	•	•	•	•	•	•	•	•	•	0.16	0.26
16 - 18 ft	0.03	•	•	•	•	•	•	•	•	•	•	•	•	•	•	0.03	0.05
> 18 ft	•	•	•	•	•	•	•	•	•	•	•	•	•	•	•	•	•
Total	19.20	5.91	1.73	1.53	1.93	5.42	2.81	5.58	10.39	7.49	5.44	5.59	8.79	3.34	2.39	12.45	100.00

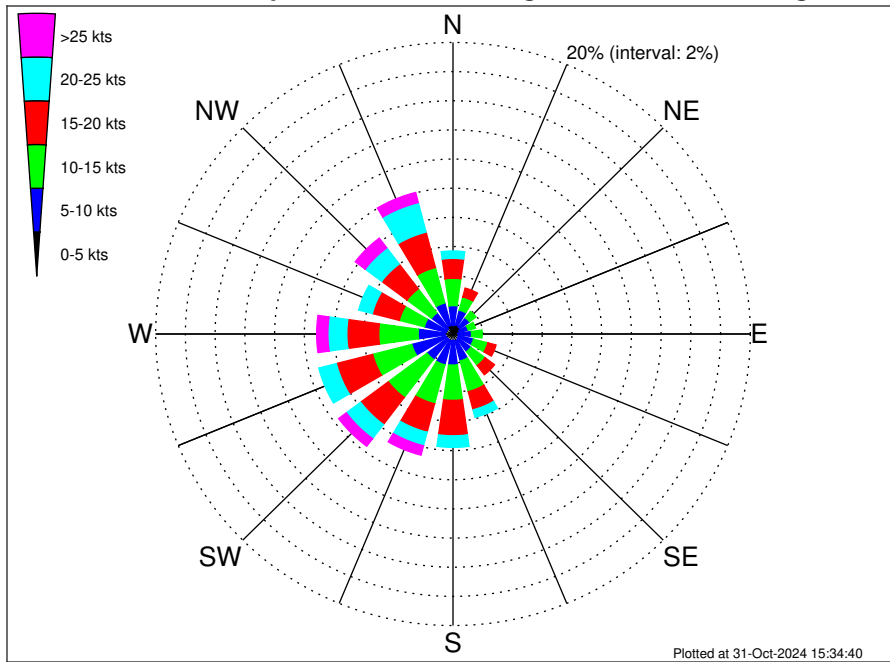
UK Cable Route GT - Berwick-upon-Tweed Climatological WavePeriod Rose for August: 1979 - 2015



Joint Frequency Distribution Table

	N	NNE	NE	ENE	E	ESE	SE	SSE	S	SSW	SW	WSW	W	WNW	NW	NNW	Total
calm	•	•	•	•	•	•	•	•	•	•	•	•	•	•	•	•	•
1 - 2 sec	•	•	•	•	0.01	•	0.01	•	•	•	•	•	•	•	•	•	0.03
2 - 4 sec	0.29	0.36	0.47	0.33	0.48	0.82	0.57	1.01	1.35	1.73	1.43	1.18	1.46	0.59	0.31	0.33	12.71
4 - 6 sec	3.51	2.59	0.87	0.92	1.29	3.37	1.89	3.94	7.23	4.62	3.60	3.97	6.30	2.16	1.24	3.55	51.04
6 - 8 sec	9.76	2.34	0.36	0.29	0.14	1.24	0.34	0.62	1.78	1.14	0.40	0.44	1.04	0.60	0.85	6.13	27.47
8 - 10 sec	5.22	0.61	0.03	•	•	•	•	•	0.03	•	•	•	•	•	•	1.38	7.26
10 - 12 sec	0.42	•	•	•	•	•	•	•	•	•	•	•	•	•	•	0.60	1.01
12 - 14 sec	0.01	•	•	•	•	•	•	•	•	•	•	•	•	•	•	0.29	0.30
14 - 16 sec	•	•	•	•	•	•	•	•	•	•	•	•	•	•	•	0.17	0.17
18 - 20 sec	•	•	•	•	•	•	•	•	•	•	•	•	•	•	•	0.01	0.01
22 - 24 sec	•	•	•	•	•	•	•	•	•	•	•	•	•	•	•	•	•
Total	19.20	5.91	1.73	1.53	1.93	5.42	2.81	5.58	10.39	7.49	5.44	5.59	8.79	3.34	2.39	12.45	100.00

UK Cable Route GT - Berwick-upon-Tweed Climatological Wind Rose for August: 1979 - 2015



Joint Frequency Distribution Table

	N	NNE	NE	ENE	E	ESE	SE	SSE	S	SSW	SW	WSW	W	WNW	NW	NNW	Total
calm	0.01	0.01	0.04	0.01	•	0.03	0.05	0.04	0.03	0.01	0.04	0.01	0.05	•	•	0.04	0.38
0 - 5 kts	0.57	0.64	0.56	0.46	0.35	0.36	0.39	0.47	0.42	0.47	0.43	0.48	0.49	0.47	0.47	0.57	7.60
5 - 10 kts	1.37	1.04	0.79	0.59	0.90	1.04	1.07	1.40	1.69	1.70	1.72	2.37	1.80	1.52	1.34	1.59	21.92
10 - 15 kts	1.87	0.94	0.55	0.51	0.72	0.99	1.20	2.17	2.42	2.76	3.26	2.72	2.65	1.74	2.07	2.51	29.07
15 - 20 kts	1.37	0.62	0.26	0.16	0.29	0.57	0.79	1.29	2.43	2.02	2.33	2.52	2.15	1.87	2.13	2.51	23.31
20 - 25 kts	0.51	0.25	0.01	0.05	0.12	0.27	0.46	0.53	0.79	0.96	1.21	1.22	1.27	0.95	1.39	2.09	12.10
25 - 30 kts	0.27	0.08	0.01	0.01	0.01	0.14	0.08	0.10	0.25	0.52	0.47	0.34	0.68	0.26	0.61	0.64	4.47
30 - 35 kts	0.09	0.01	0.01	0.03	•	•	•	0.01	0.04	0.13	0.17	0.12	0.08	0.05	0.20	0.05	0.99
35 - 40 kts	0.04	•	•	0.01	•	•	0.01	•	•	0.01	0.01	•	•	0.03	0.03	0.01	0.16
40 - 45 kts	•	•	•	•	•	•	•	•	•	•	•	•	•	•	•	0.01	0.01
45 - 50 kts	•	•	•	•	•	•	•	•	•	•	•	•	•	•	•	•	•
Total	6.10	3.59	2.24	1.82	2.38	3.41	4.05	6.02	8.06	8.58	9.64	9.78	9.17	6.89	8.23	10.03	100.00