

UK Cable Route GT - Berwick-upon-Tweed - June

Latitude: 55.81 N Longitude: 1.35 E

Weather Days

Wave Height > 6.0 ft Mean: 6.2 days Range: 3.7 - 8.7 days p50:6 days p75:4.5 days p90:4 days

Wave Height > 7.0 ft Mean: 3.7 days Range: 1.7 - 5.8 days p50:3.5 days p75:2 days p90:2 days

Wave Height > 8.0 ft Mean: 2.3 days Range: 0.6 - 4.0 days p50:2 days p75:1.5 days p90:0.5 days

Wind Speed > 15.0 knots Mean: 11.3 days Range: 7.9 - 14.8 days p50:11 days p75:8.5 days p90:7.5 days

Wind Speed > 20.0 knots Mean: 4.3 days Range: 2.1 - 6.4 days p50:4 days p75:3 days p90:2 days

Wind Speed > 25.0 knots Mean: 1.0 days Range: 0.3 - 1.6 days p50:1.5 days p75:0.5 days p90:0.5 days

Working Window

Wave Height < 6.0 ft
A 1 day or longer window will statistically occur 4.5 times per month
A 2 day or longer window will statistically occur 3.1 times per month
A 3 day or longer window will statistically occur 2.3 times per month

Wave Height < 7.0 ft
A 1 day or longer window will statistically occur 3.4 times per month
A 2 day or longer window will statistically occur 2.8 times per month
A 3 day or longer window will statistically occur 2.3 times per month

Wave Height < 8.0 ft
A 1 day or longer window will statistically occur 2.8 times per month
A 2 day or longer window will statistically occur 2.4 times per month
A 3 day or longer window will statistically occur 2.0 times per month

Waves

Mean Height: 2 - 4 ft

The wave heights will occasionally reach 10 - 12 ft, but rarely higher.

Mean Period: 4 - 6 sec

The wave periods will occasionally reach 10 - 12 sec, but rarely longer.

Principle Direction, from: N

WindSea/Swell: 38% / 62%

Winds

Mean Speed: 10 - 15 kts

The winds will occasionally reach 30 - 35 kts, but rarely greater.

Principle Direction, from: NNW

Currents

Mean Speed: 0.01-0.25 kts

The currents will occasionally reach 0.75-1.00 kts, but rarely greater.

Principle Direction, to: ENE

Weather Days

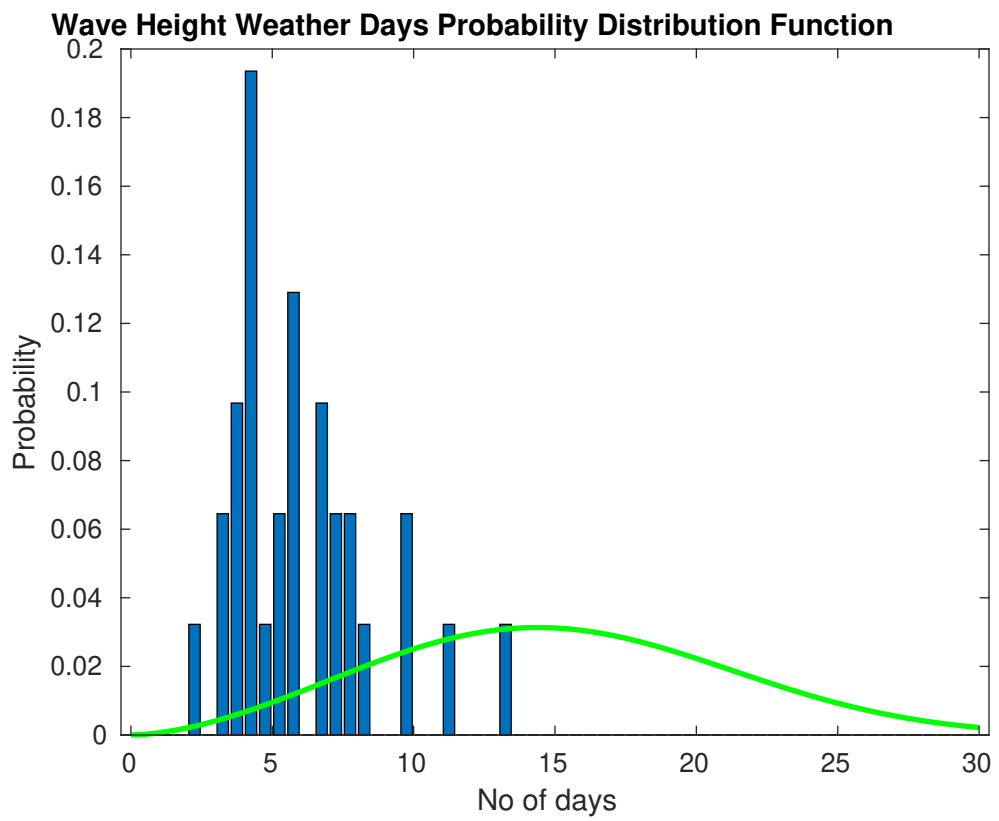
Current Speed > 1.0 knots Mean: 0.0 days Range: 0.0 - 0.0 days p50:1 days p75:1 days p90:1 days

Current Speed > 1.5 knots Mean: 0.0 days Range: 0.0 - 0.0 days p50:1 days p75:1 days p90:1 days

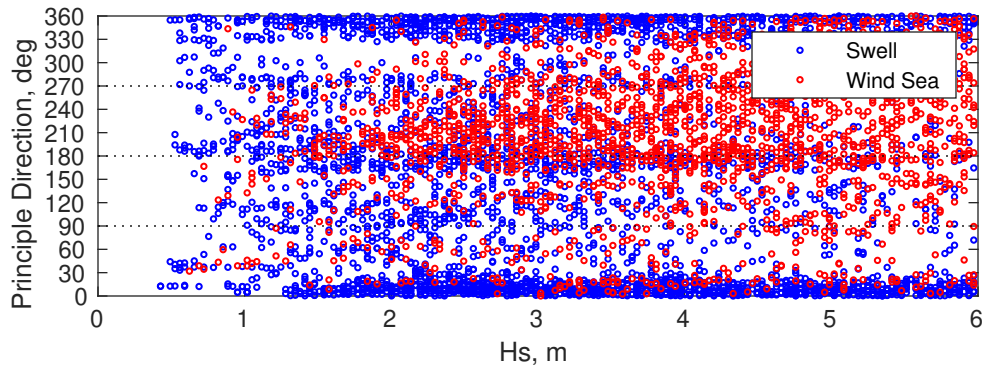
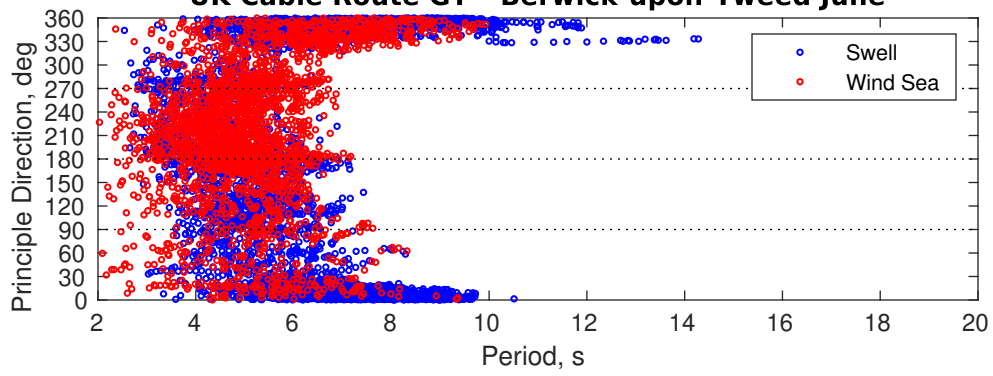
Current Speed > 2.0 knots Mean: 0.0 days Range: 0.0 - 0.0 days p50:1 days p75:1 days p90:1 days

Severe Storms

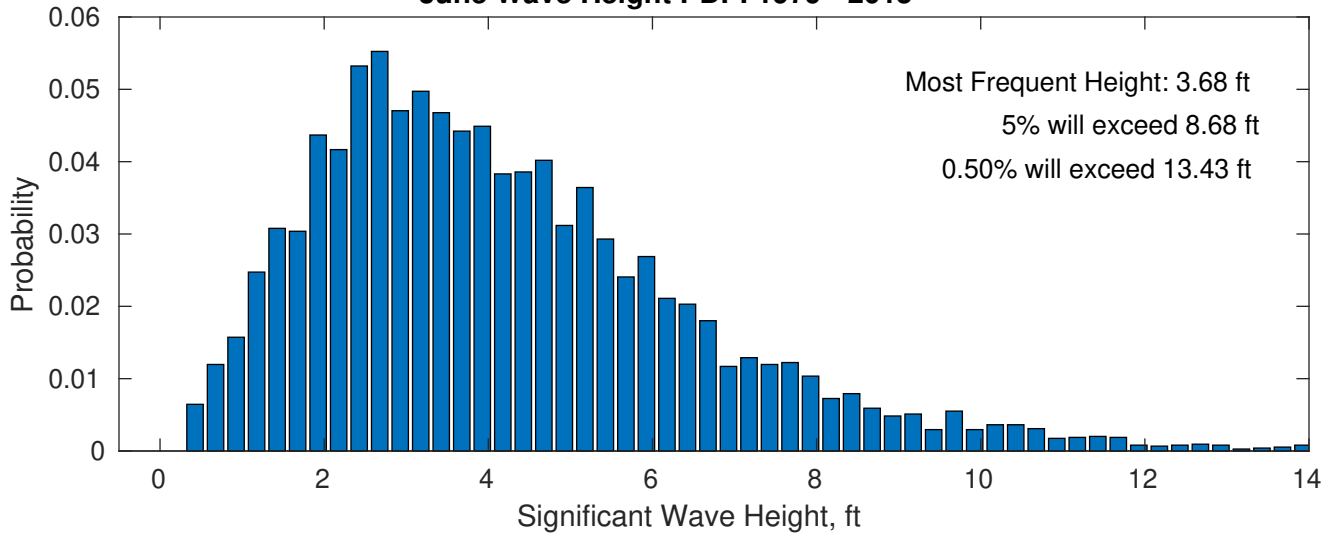
Severe storms with gale force winds and extreme waves are not expected during this month.



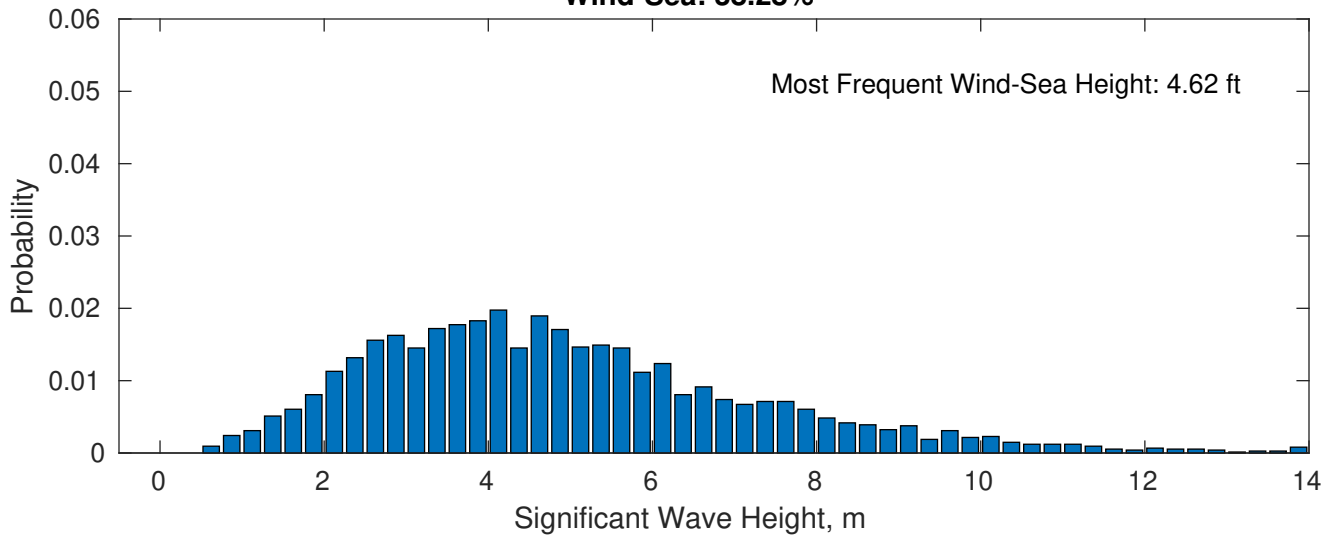
UK Cable Route GT - Berwick-upon-Tweed June



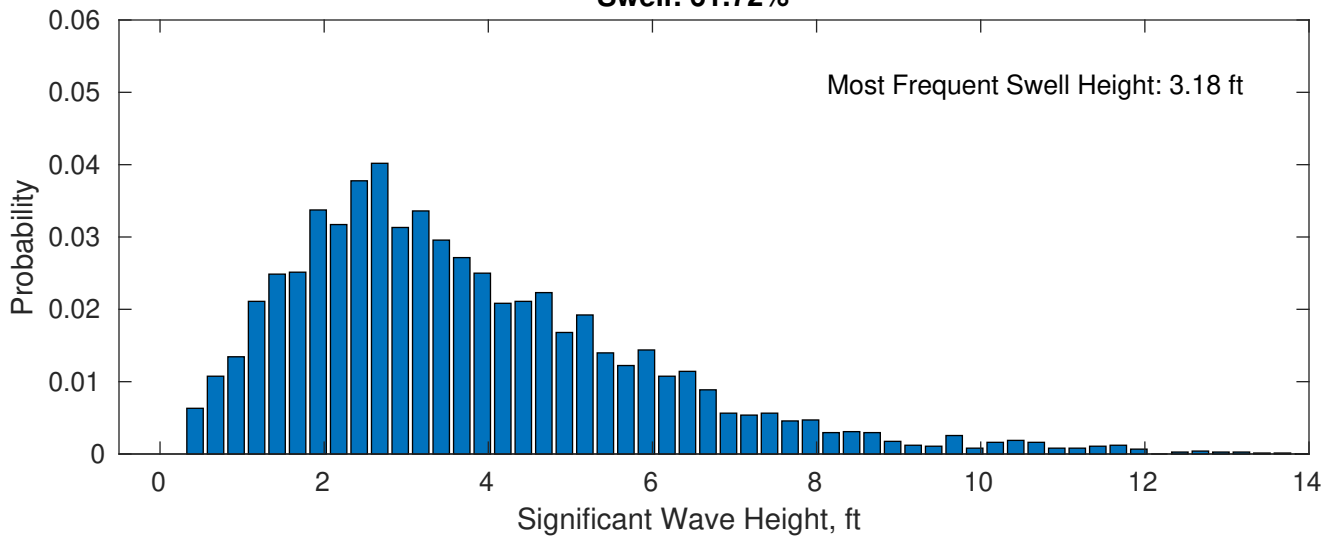
June Wave Height PDF: 1979 - 2015



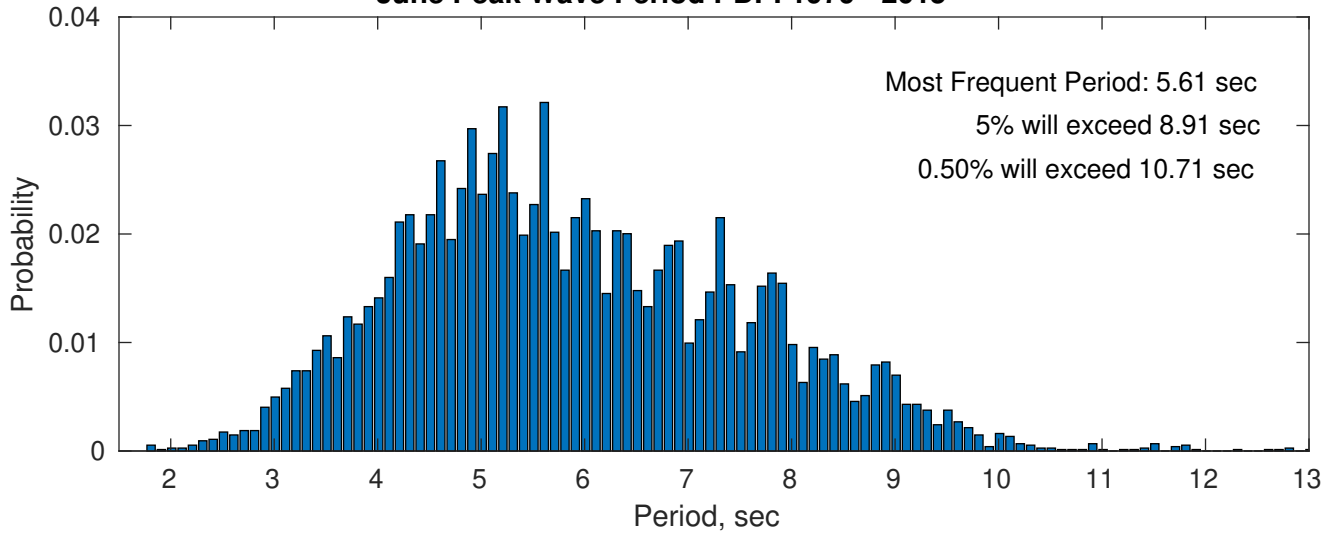
Wind-Sea: 38.28%



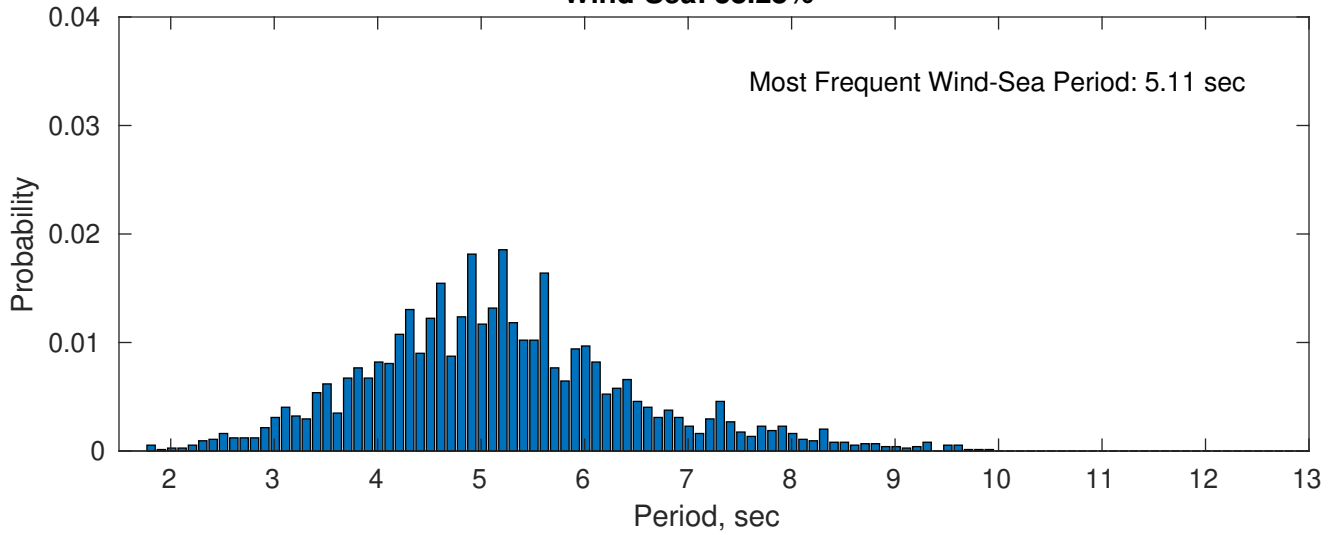
Swell: 61.72%



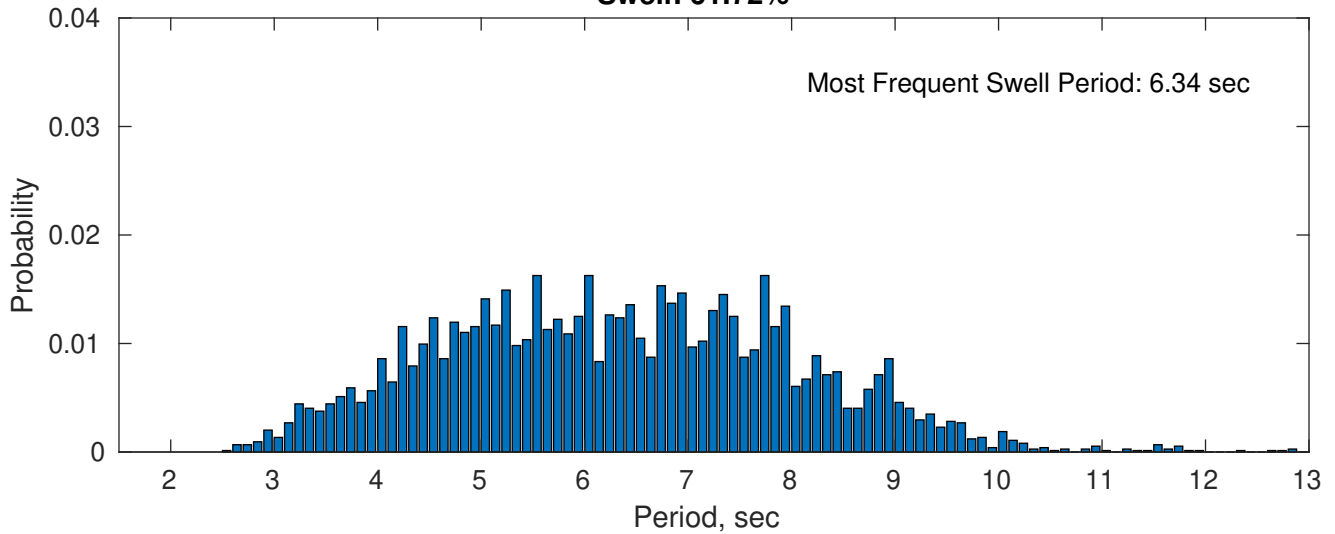
June Peak Wave Period PDF: 1979 - 2015



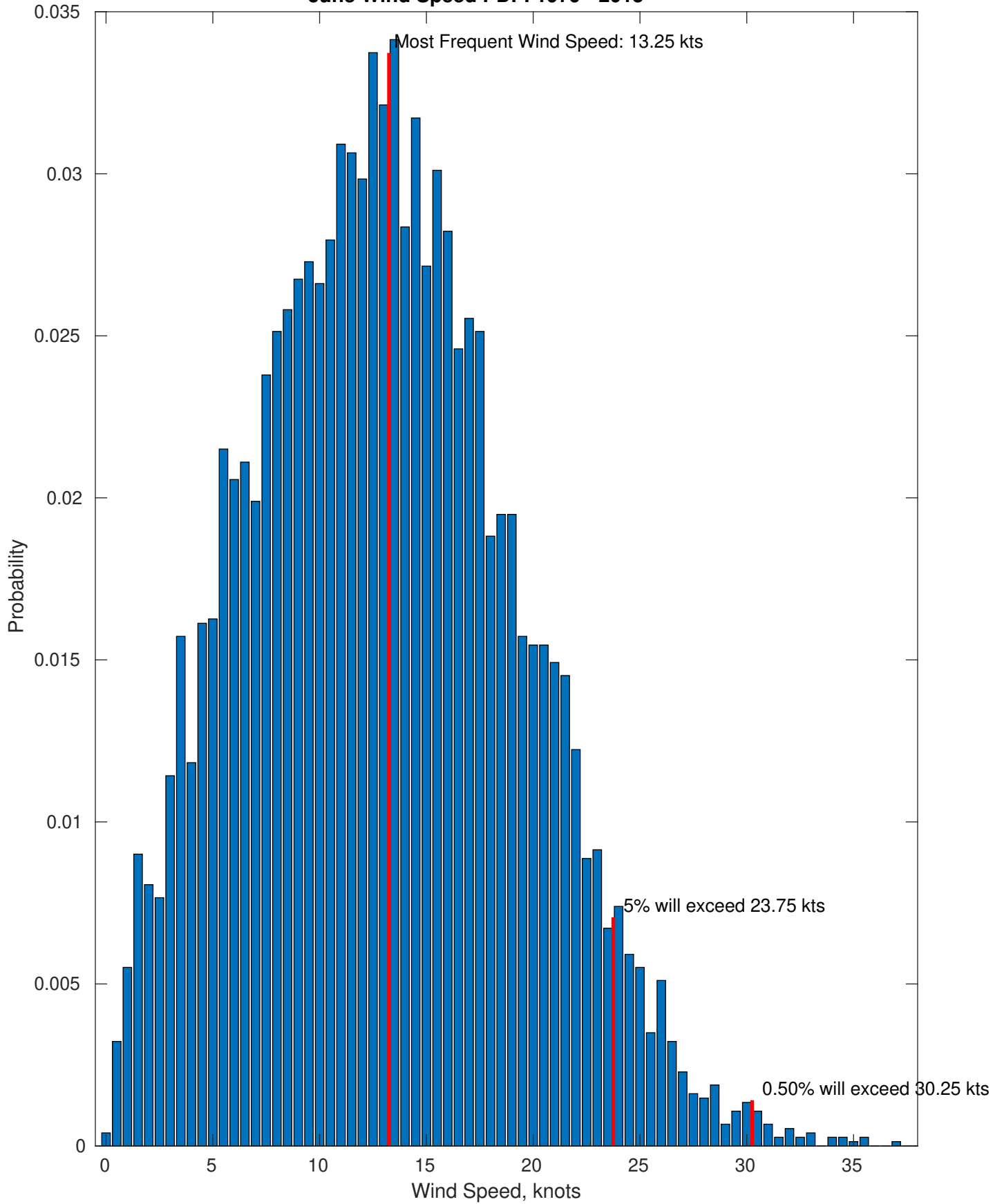
Wind-Sea: 38.28%



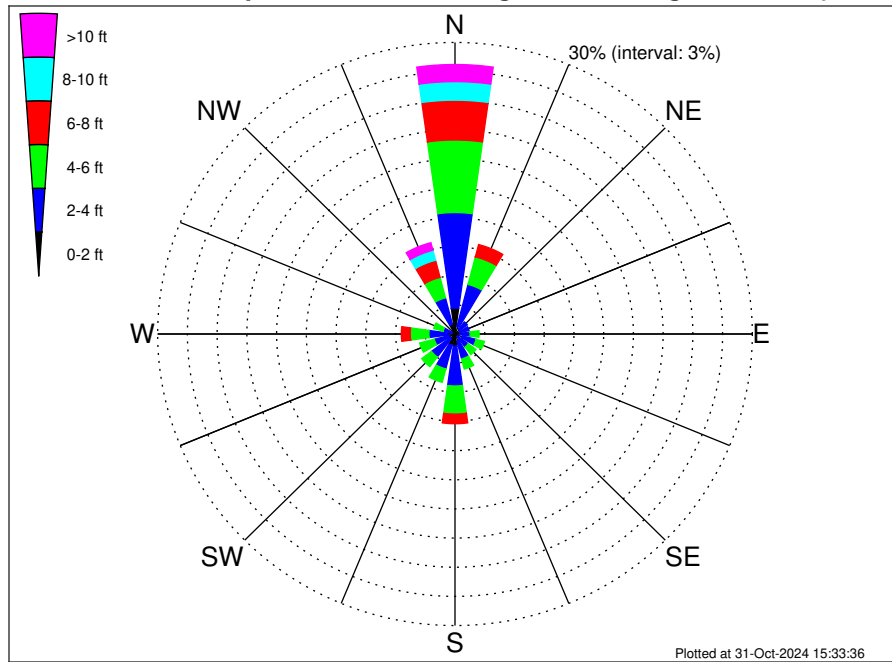
Swell: 61.72%



June Wind Speed PDF: 1979 - 2015



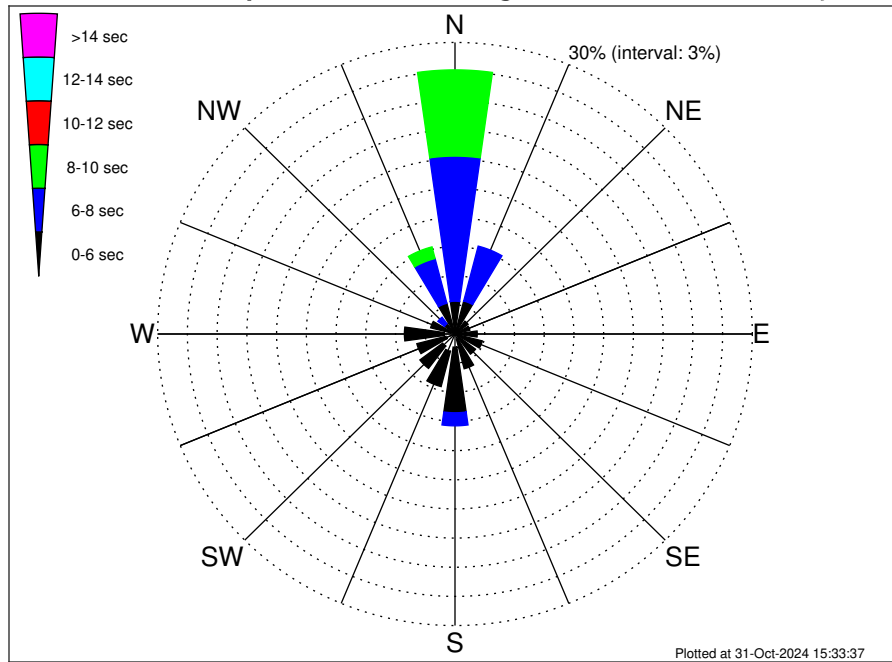
UK Cable Route GT - Berwick-upon-Tweed Climatological WaveHeight Rose for June: 1979 - 2015



Joint Frequency Distribution Table

	N	NNE	NE	ENE	E	ESE	SE	SSE	S	SSW	SW	WSW	W	WNW	NW	NNW	Total
calm	0.32	0.19	0.24	0.05	0.01	0.15	0.03	0.12	0.19	0.23	0.05	0.07	0.16	0.13	0.09	0.20	2.24
1 - 2 ft	2.34	0.62	0.39	0.47	0.51	0.63	0.32	0.62	1.06	0.95	0.58	0.47	0.63	0.20	0.03	0.85	10.67
2 - 4 ft	9.84	4.46	0.93	0.94	1.01	1.42	1.33	1.91	4.10	2.53	2.34	1.63	1.84	0.90	0.60	2.80	38.58
4 - 6 ft	7.46	2.93	0.42	0.31	0.90	0.86	0.97	1.08	2.89	1.42	1.24	1.52	1.88	0.98	0.67	2.18	27.70
6 - 8 ft	4.10	1.30	0.23	0.26	0.27	0.27	0.32	0.42	0.99	0.63	0.31	0.44	0.90	0.39	0.44	1.81	13.09
8 - 10 ft	1.91	0.39	0.04	0.05	0.12	0.11	0.03	•	0.19	0.07	0.15	0.09	0.22	0.09	0.24	1.06	4.76
10 - 12 ft	1.25	0.08	0.03	0.04	0.07	•	•	•	0.03	0.01	0.01	0.01	0.01	•	0.08	0.42	2.04
12 - 14 ft	0.34	•	•	•	•	•	•	•	•	•	•	•	•	•	0.01	0.13	0.48
14 - 16 ft	0.11	•	•	•	•	•	•	•	•	•	•	•	•	•	•	0.26	0.36
16 - 18 ft	0.07	•	•	•	•	•	•	•	•	•	•	•	•	•	•	•	0.07
> 18 ft	•	•	•	•	•	•	•	•	•	•	•	•	•	•	•	•	•
Total	27.73	9.97	2.27	2.12	2.89	3.44	3.00	4.14	9.45	5.85	4.68	4.23	5.65	2.70	2.18	9.70	100.00

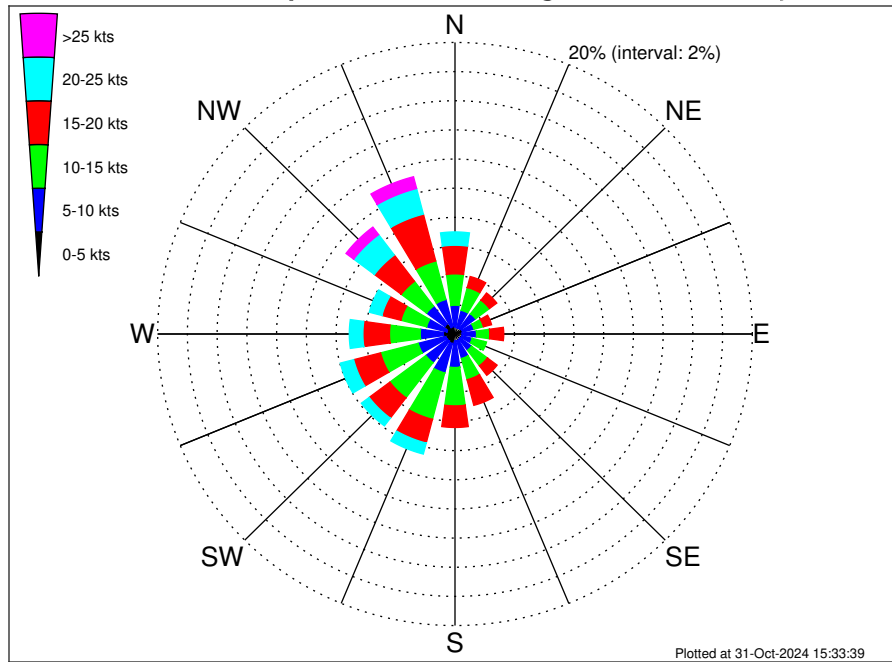
UK Cable Route GT - Berwick-upon-Tweed Climatological WavePeriod Rose for June: 1979 - 2015



Joint Frequency Distribution Table

	N	NNE	NE	ENE	E	ESE	SE	SSE	S	SSW	SW	WSW	W	WNW	NW	NNW	Total
calm	•	•	•	•	•	•	•	•	•	•	•	•	•	•	•	•	•
1 - 2 sec	•	•	0.03	•	•	0.01	•	0.01	•	•	•	•	•	•	•	0.01	0.07
2 - 4 sec	0.13	0.31	0.40	0.34	0.23	0.32	0.47	0.54	1.36	1.84	1.56	0.94	1.09	0.44	0.20	0.22	10.39
4 - 6 sec	3.24	3.20	1.22	1.21	2.02	2.51	2.12	3.15	6.75	3.75	2.88	3.04	4.02	2.10	1.13	3.04	45.36
6 - 8 sec	14.93	5.83	0.62	0.48	0.65	0.59	0.40	0.44	1.34	0.26	0.24	0.26	0.54	0.16	0.83	4.76	32.34
8 - 10 sec	8.87	0.63	•	0.09	•	•	•	•	•	•	•	•	•	•	0.01	1.24	10.85
10 - 12 sec	0.55	•	•	•	•	•	•	•	•	•	•	•	•	•	•	0.27	0.82
12 - 14 sec	•	•	•	•	•	•	•	•	•	•	•	•	•	•	•	0.15	0.15
14 - 16 sec	•	•	•	•	•	•	•	•	•	•	•	•	•	•	•	0.03	0.03
18 - 20 sec	•	•	•	•	•	•	•	•	•	•	•	•	•	•	•	•	•
22 - 24 sec	•	•	•	•	•	•	•	•	•	•	•	•	•	•	•	•	•
Total	27.73	9.97	2.27	2.12	2.89	3.44	3.00	4.14	9.45	5.85	4.68	4.23	5.65	2.70	2.18	9.70	100.00

UK Cable Route GT - Berwick-upon-Tweed Climatological Wind Rose for June: 1979 - 2015



Joint Frequency Distribution Table

	N	NNE	NE	ENE	E	ESE	SE	SSE	S	SSW	SW	WSW	W	WNW	NW	NNW	Total
calm	0.03	0.03	0.03	0.01	0.01	0.01	0.01	0.04	0.03	0.04	0.04	0.01	•	0.03	0.04	•	0.36
0 - 5 kts	0.46	0.42	0.44	0.51	0.47	0.47	0.42	0.43	0.44	0.63	0.58	0.62	0.78	0.54	0.82	0.51	8.53
5 - 10 kts	1.49	1.24	1.26	0.79	0.97	0.71	0.97	1.26	1.83	2.08	1.84	1.92	1.56	1.41	1.53	1.94	22.81
10 - 15 kts	2.15	1.61	1.17	0.66	0.89	0.99	1.33	1.51	2.63	3.29	3.02	2.62	2.07	1.79	2.14	2.73	30.60
15 - 20 kts	1.96	0.78	0.62	0.56	0.94	0.47	0.82	1.81	1.48	1.68	1.75	1.87	1.79	1.32	2.26	3.32	23.43
20 - 25 kts	0.91	0.31	0.15	0.23	0.39	0.23	0.36	0.30	0.47	0.78	0.66	0.93	0.91	0.87	1.75	1.81	11.06
25 - 30 kts	0.27	0.05	0.03	0.01	•	0.05	0.03	0.03	0.09	0.16	0.16	0.17	0.35	0.16	0.50	0.56	2.63
30 - 35 kts	0.01	•	•	•	0.03	•	0.01	•	0.01	0.03	•	0.01	0.01	0.01	0.13	0.24	0.51
35 - 40 kts	•	•	•	•	•	•	•	•	•	•	0.01	•	•	•	0.01	0.03	0.05
40 - 45 kts	•	•	•	•	•	•	•	•	•	•	•	•	•	•	•	•	•
45 - 50 kts	•	•	•	•	•	•	•	•	•	•	•	•	•	•	•	•	•
Total	7.28	4.44	3.70	2.78	3.70	2.94	3.95	5.38	6.99	8.70	8.06	8.16	7.47	6.13	9.18	11.14	100.00