

UK Cable Route GT - Berwick-upon-Tweed - September

Latitude: 55.81 N Longitude: 1.35 E

Weather Days

Wave Height > 6.0 ft Mean: 10.7 days Range: 7.5 - 14.0 days p50:11 days p75:8 days p90:7 days

Wave Height > 7.0 ft Mean: 7.5 days Range: 4.4 - 10.6 days p50:8 days p75:5 days p90:4 days

Wave Height > 8.0 ft Mean: 5.2 days Range: 2.5 - 7.9 days p50:5.5 days p75:3 days p90:2 days

Wind Speed > 15.0 knots Mean: 16.3 days Range: 13.5 - 19.2 days p50:17.5 days p75:14.5 days p90:12.5 days

Wind Speed > 20.0 knots Mean: 8.8 days Range: 6.1 - 11.5 days p50:9.5 days p75:7 days p90:5.5 days

Wind Speed > 25.0 knots Mean: 3.7 days Range: 1.9 - 5.6 days p50:3.5 days p75:2.5 days p90:2 days

Working Window

Wave Height < 6.0 ft
A 1 day or longer window will statistically occur 4.7 times per month
A 2 day or longer window will statistically occur 2.8 times per month
A 3 day or longer window will statistically occur 2.0 times per month

Wave Height < 7.0 ft
A 1 day or longer window will statistically occur 4.3 times per month
A 2 day or longer window will statistically occur 3.1 times per month
A 3 day or longer window will statistically occur 2.3 times per month

Wave Height < 8.0 ft
A 1 day or longer window will statistically occur 4.0 times per month
A 2 day or longer window will statistically occur 3.1 times per month
A 3 day or longer window will statistically occur 2.3 times per month

Waves

Mean Height: 4 - 6 ft

The wave heights will occasionally reach 16 - 18 ft, but rarely higher.

Mean Period: 6 - 8 sec

The wave periods will occasionally reach 12 - 14 sec, but rarely longer.

Principle Direction, from: N

WindSea/Swell: 48% / 52%

Winds

Mean Speed: 15 - 20 kts

The winds will occasionally reach 35 - 40 kts, but rarely greater.

Principle Direction, from: SW

Currents

Mean Speed: 0.01-0.25 kts

The currents will occasionally reach 0.75-1.00 kts, but rarely greater.

Principle Direction, to: ESE

Weather Days

Current Speed > 1.0 knots Mean: 0.2 days Range: 0.0 - 0.6 days p50:1 days p75:1 days p90:1 days

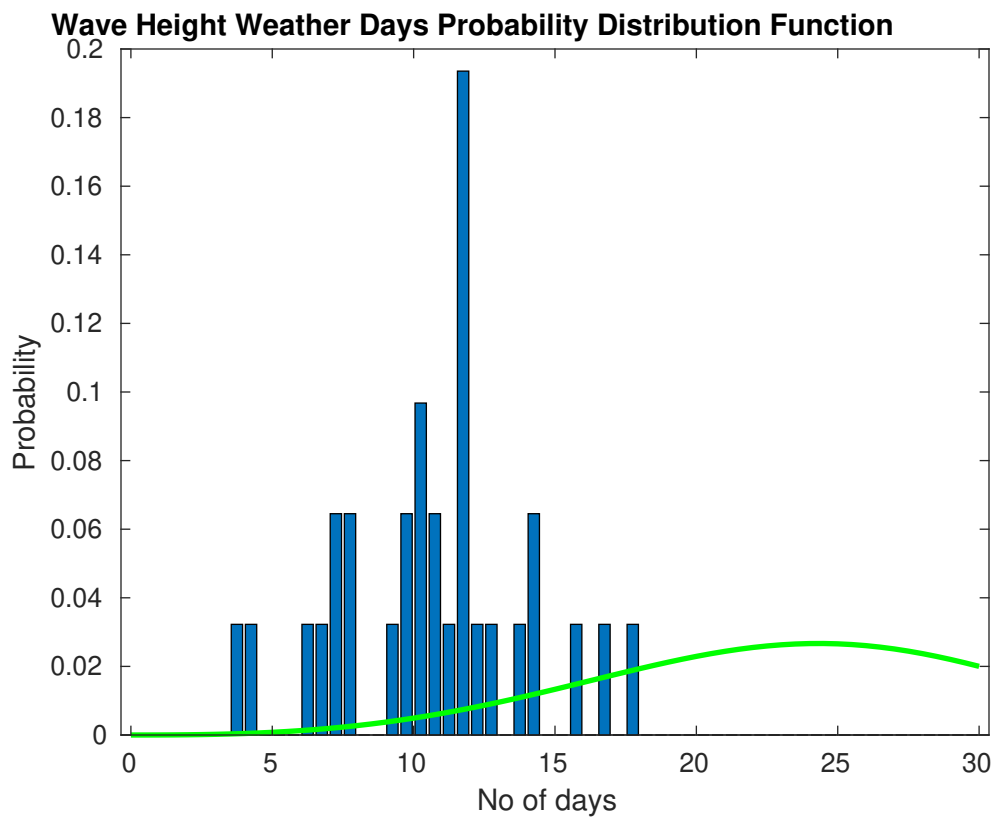
Current Speed > 1.5 knots Mean: 0.0 days Range: 0.0 - 0.0 days p50:1 days p75:1 days p90:1 days

Current Speed > 2.0 knots Mean: 0.0 days Range: 0.0 - 0.0 days p50:1 days p75:1 days p90:1 days

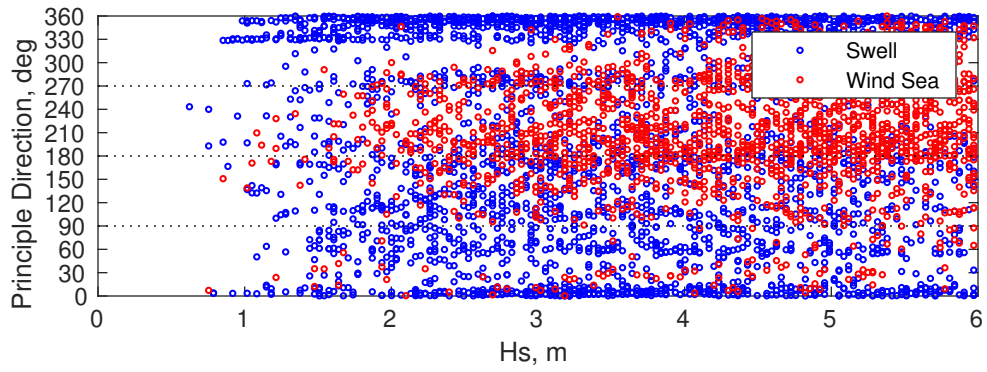
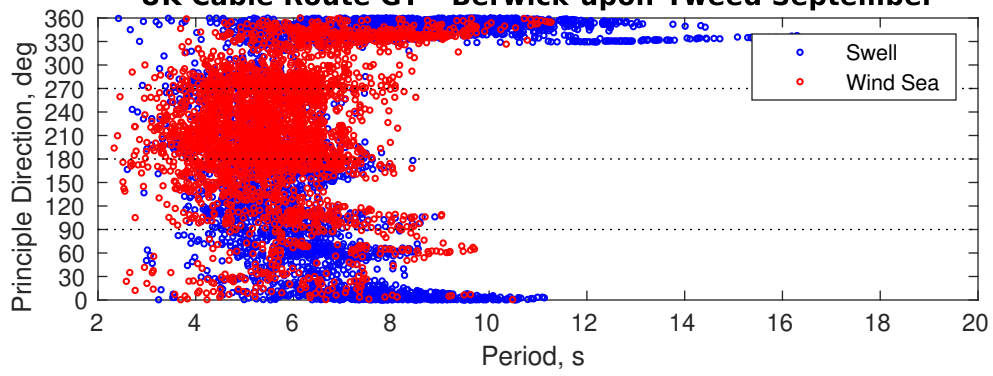
Severe Storms

There is a 16 % chance of a storm occurring in the month with winds peaking above 34 kts.

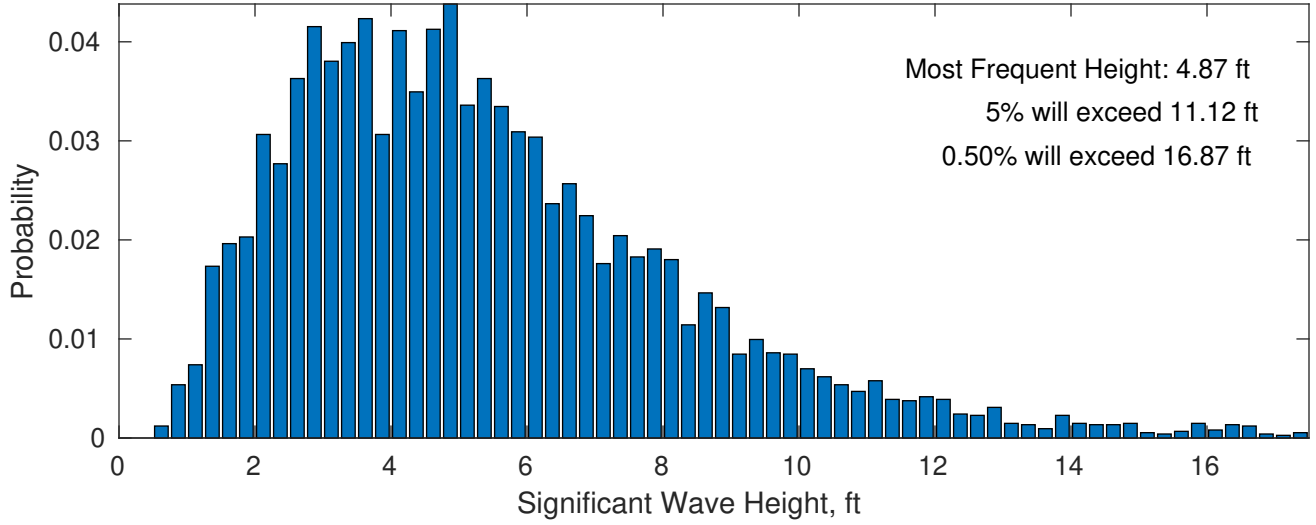
There is a 19 % chance of a storm occurring in the month with waves exceeding 3 m (10 ft) above the mean wave height.



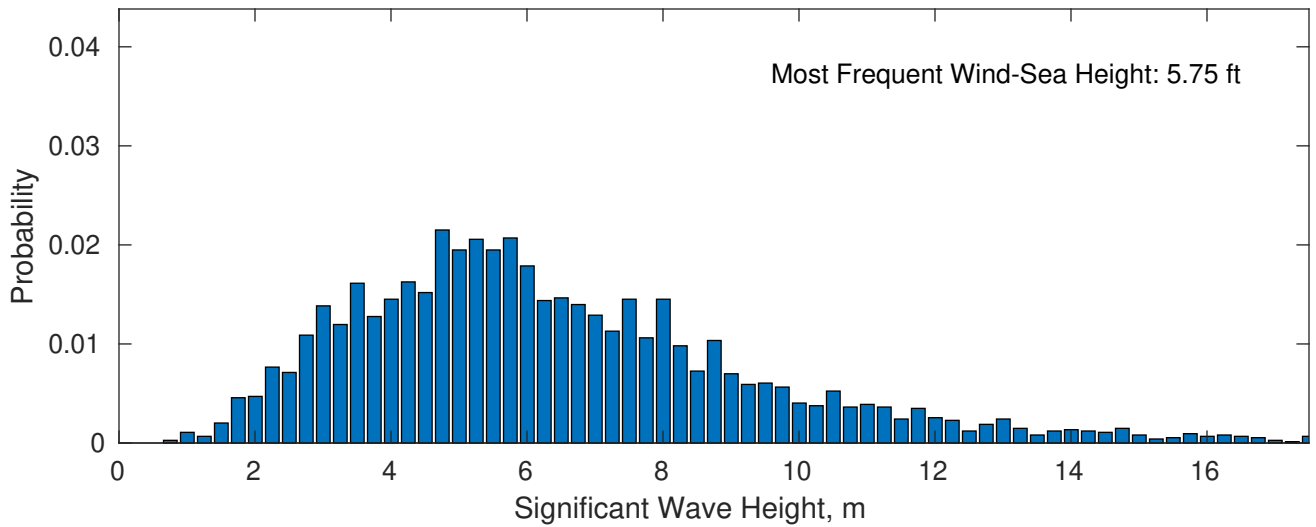
UK Cable Route GT - Berwick-upon-Tweed September



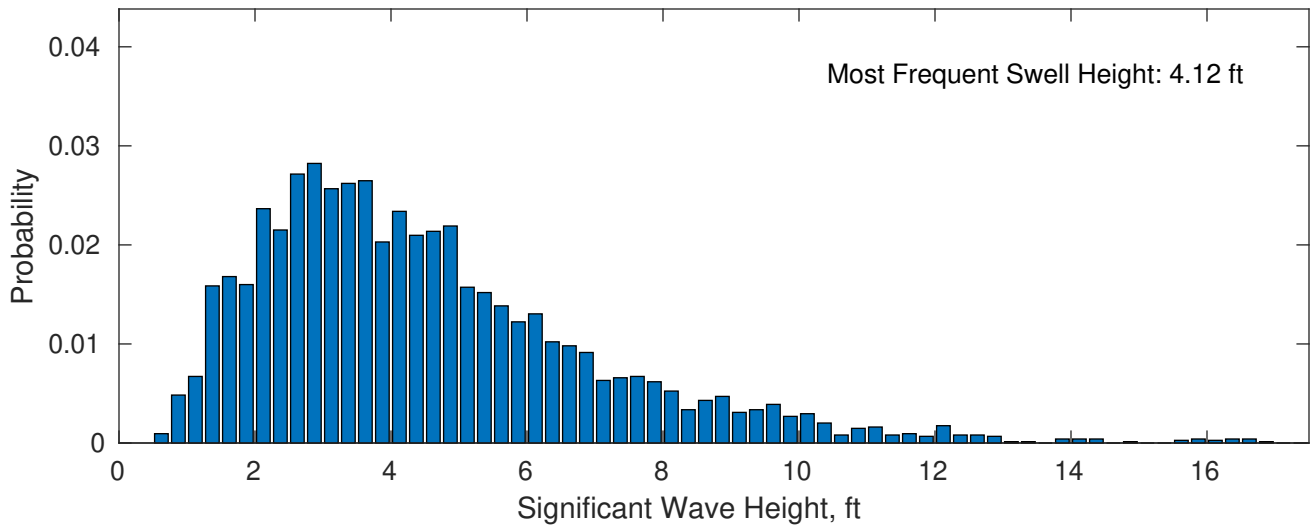
September Wave Height PDF: 1979 - 2015



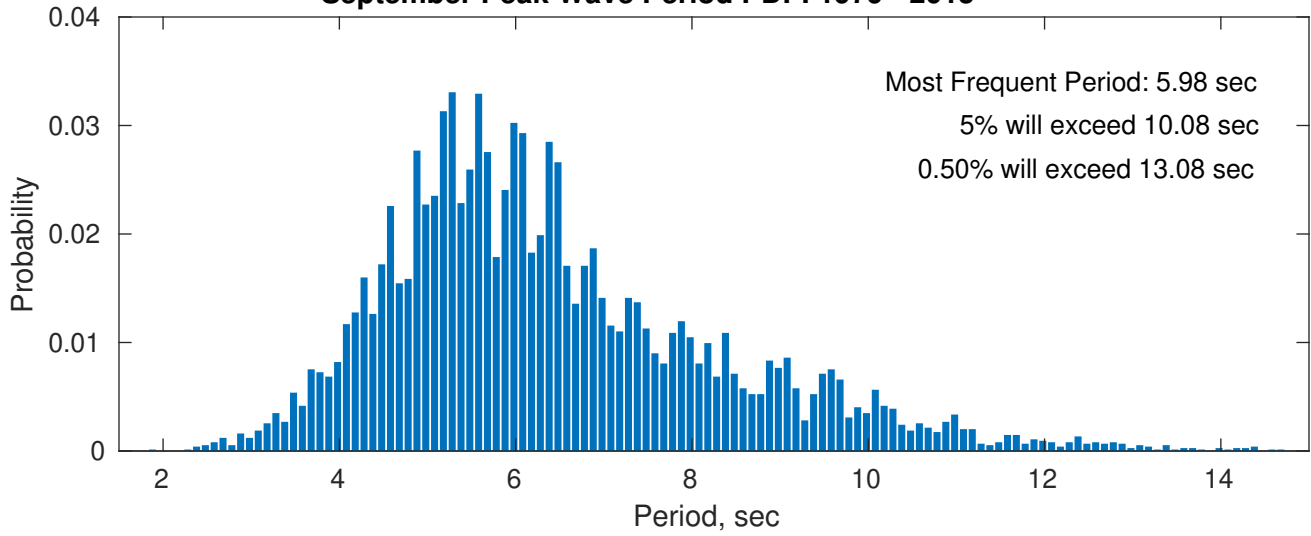
Wind-Sea: 47.66%



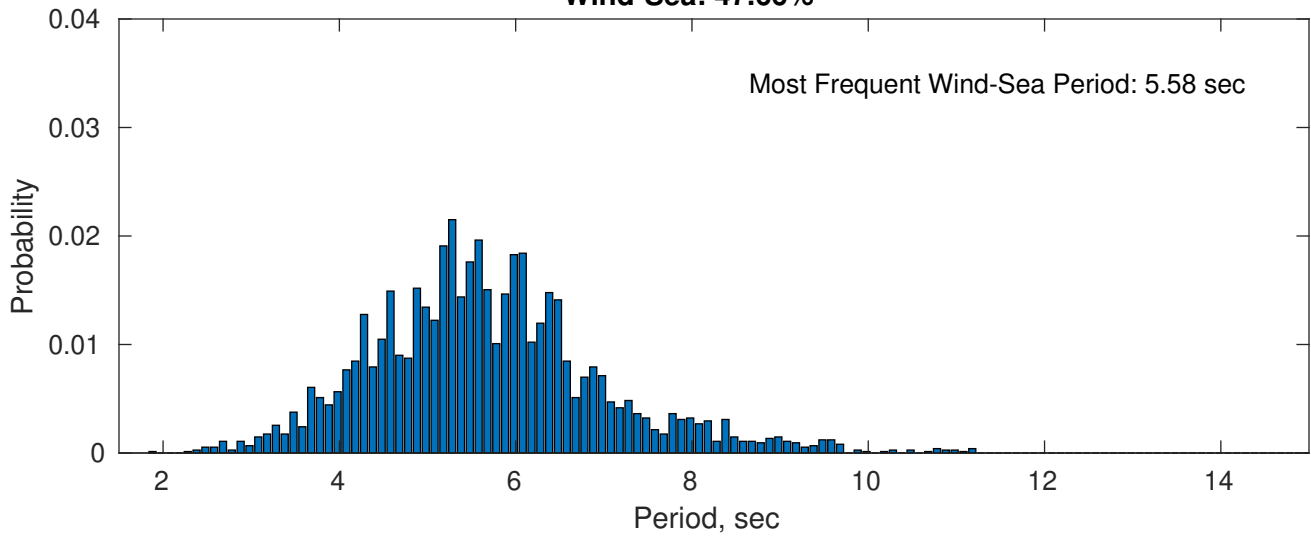
Swell: 52.34%



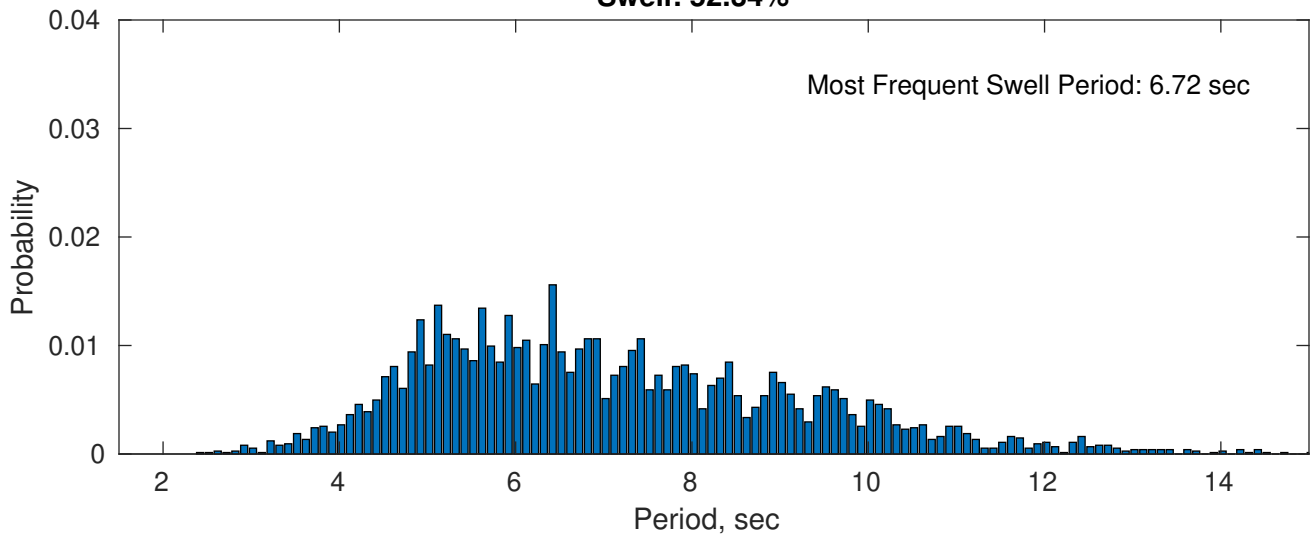
September Peak Wave Period PDF: 1979 - 2015



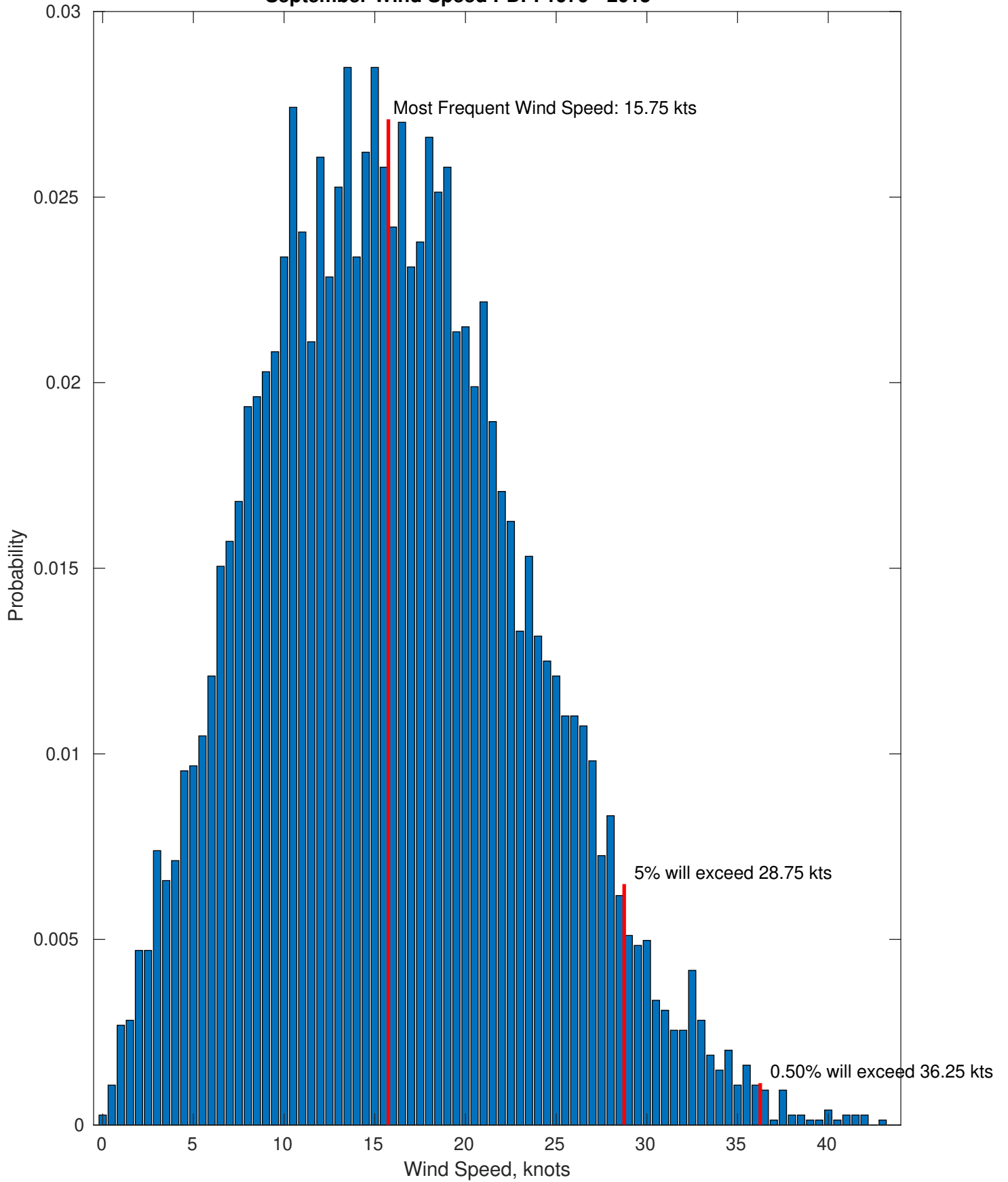
Wind-Sea: 47.66%



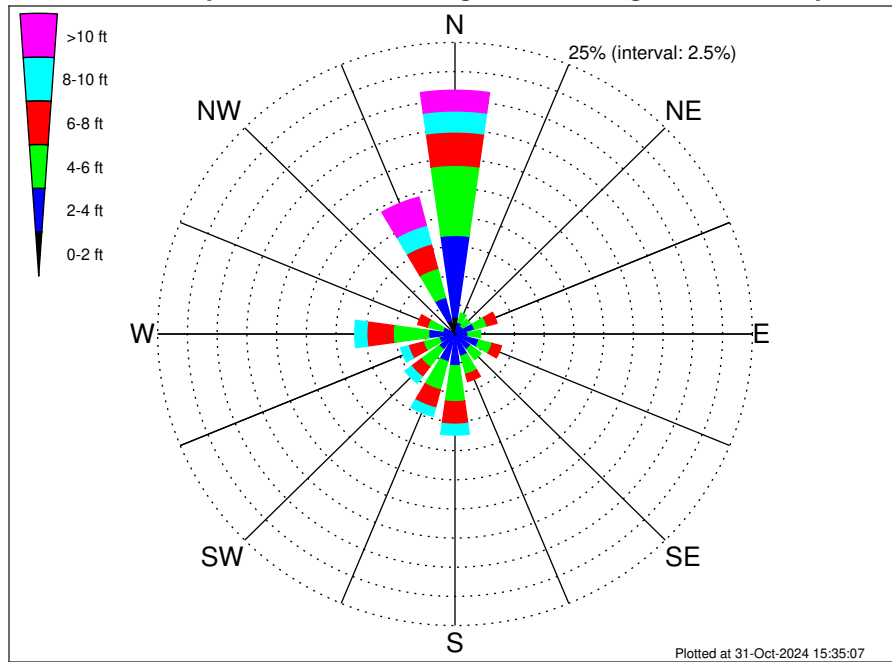
Swell: 52.34%



September Wind Speed PDF: 1979 - 2015



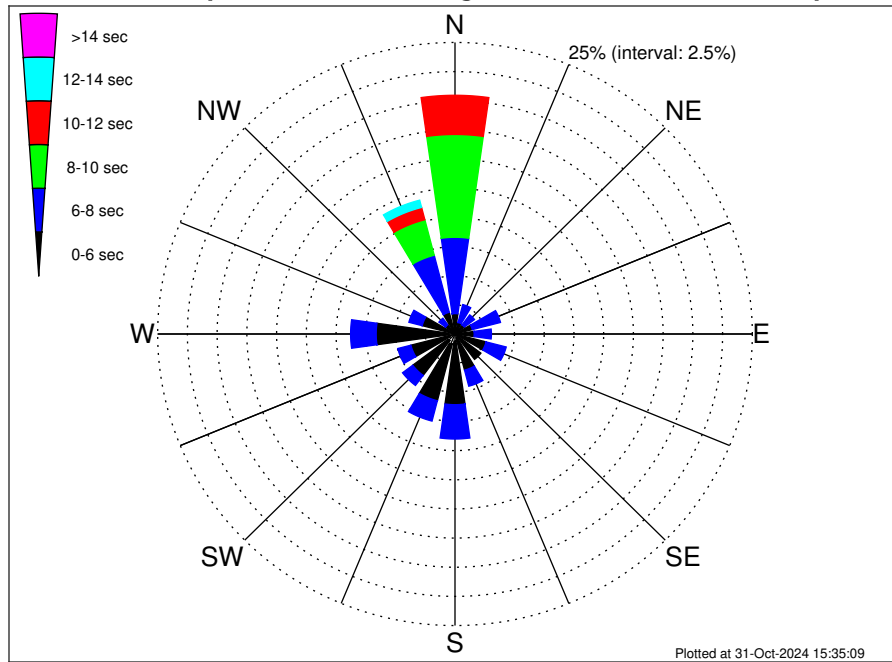
UK Cable Route GT - Berwick-upon-Tweed Climatological WaveHeight Rose for September: 1979 - 2015



Joint Frequency Distribution Table

	N	NNE	NE	ENE	E	ESE	SE	SSE	S	SSW	SW	WSW	W	WNW	NW	NNW	Total
calm	0.07	•	•	•	•	•	•	0.03	•	0.03	0.01	0.03	•	•	•	0.09	0.26
1 - 2 ft	1.37	0.20	0.17	0.32	0.22	0.36	0.19	0.19	0.34	0.27	0.26	0.22	0.31	0.11	0.05	1.09	5.66
2 - 4 ft	7.02	0.83	0.66	1.36	0.89	1.71	1.45	1.75	2.39	2.15	1.38	1.13	1.91	0.95	0.36	2.06	28.00
4 - 6 ft	6.01	0.82	0.74	1.10	1.06	1.16	1.10	1.60	3.08	2.50	1.88	1.38	2.98	1.34	0.39	2.57	29.72
6 - 8 ft	2.86	0.54	0.44	0.87	0.54	0.81	0.31	0.65	1.94	1.60	1.05	1.29	2.22	0.83	0.43	2.16	18.53
8 - 10 ft	1.80	0.23	0.09	0.35	0.20	0.32	0.08	0.28	0.93	0.75	0.69	0.67	1.01	0.47	0.36	1.65	9.89
10 - 12 ft	0.82	0.09	0.01	0.24	0.12	0.13	0.01	0.11	0.28	0.35	0.19	0.13	0.20	0.24	0.11	1.20	4.25
12 - 14 ft	0.28	0.01	0.01	0.09	0.15	0.09	•	0.05	0.07	0.05	0.05	0.08	0.16	0.05	0.05	0.63	1.85
14 - 16 ft	0.20	•	0.01	0.05	0.07	0.04	•	0.01	0.01	0.01	0.01	0.04	0.04	0.05	•	0.38	0.94
16 - 18 ft	0.27	•	•	0.04	•	0.01	•	•	•	•	0.01	0.01	0.01	•	0.01	0.19	0.56
> 18 ft	0.20	•	•	0.03	•	•	•	•	•	•	•	•	•	•	•	0.11	0.34
Total	20.90	2.73	2.15	4.46	3.24	4.64	3.15	4.66	9.03	7.72	5.54	4.99	8.84	4.06	1.77	12.12	100.00

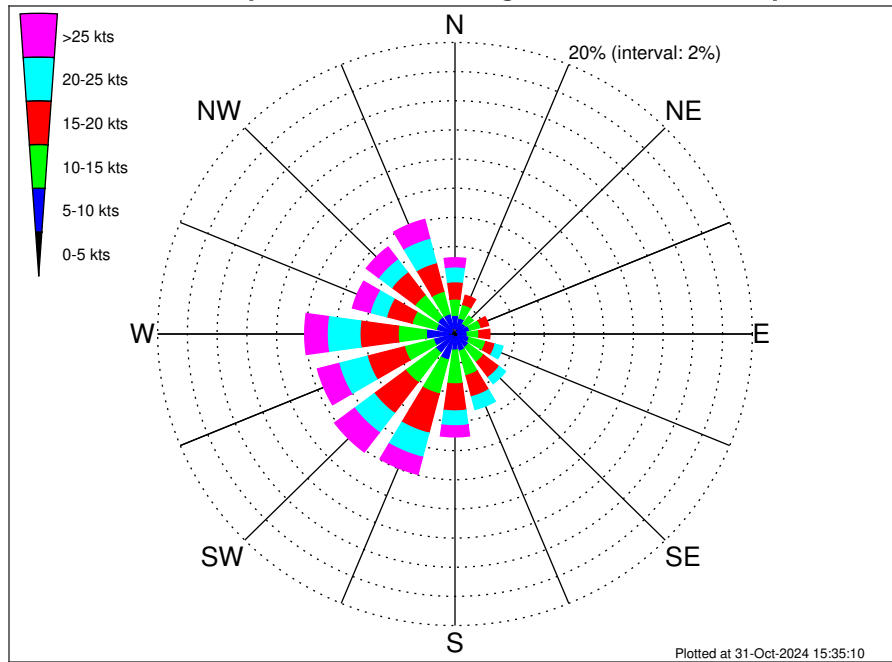
UK Cable Route GT - Berwick-upon-Tweed Climatological WavePeriod Rose for September: 1979 - 2015



Joint Frequency Distribution Table

	N	NNE	NE	ENE	E	ESE	SE	SSE	S	SSW	SW	WSW	W	WNW	NW	NNW	Total	
calm	•	•	•	•	•	•	•	•	•	•	•	•	•	•	•	•	•	
1 - 2 sec	0.01	•	•	•	•	•	•	•	•	•	•	•	•	•	•	•	0.01	
2 - 4 sec	0.23	0.09	0.15	0.04	0.09	0.16	0.30	0.34	0.60	0.90	0.73	0.50	0.52	0.27	0.07	0.05	5.04	
4 - 6 sec	1.51	0.93	0.83	1.47	1.52	2.54	2.43	2.86	5.46	5.01	3.72	3.33	6.10	2.58	0.93	1.87	43.09	
6 - 8 sec	6.55	1.59	1.08	2.45	1.45	1.75	0.42	1.42	2.94	1.80	1.08	1.14	2.15	1.16	0.70	5.05	32.72	
8 - 10 sec	8.82	0.12	0.09	0.51	0.17	0.19	•	0.04	0.03	•	0.01	0.01	0.07	0.05	0.08	3.15	13.35	
10 - 12 sec	3.36	•	•	•	•	•	•	•	•	•	•	•	•	•	•	1.09	4.45	
12 - 14 sec	0.40	•	•	•	•	•	•	•	•	•	•	•	•	•	•	•	0.65	1.05
14 - 16 sec	0.03	•	•	•	•	•	•	•	•	•	•	•	•	•	•	•	0.22	0.24
18 - 20 sec	•	•	•	•	•	•	•	•	•	•	•	•	•	•	•	•	0.05	0.05
22 - 24 sec	•	•	•	•	•	•	•	•	•	•	•	•	•	•	•	•	•	•
Total	20.90	2.73	2.15	4.46	3.24	4.64	3.15	4.66	9.03	7.72	5.54	4.99	8.84	4.06	1.77	12.12	100.00	

UK Cable Route GT - Berwick-upon-Tweed Climatological Wind Rose for September: 1979 - 2015



Joint Frequency Distribution Table

	N	NNE	NE	ENE	E	ESE	SE	SSE	S	SSW	SW	WSW	W	WNW	NW	NNW	Total
calm	0.01	•	0.04	•	•	•	0.01	•	•	0.01	•	•	0.01	•	0.01	0.03	0.13
0 - 5 kts	0.36	0.36	0.15	0.31	0.23	0.23	0.24	0.26	0.22	0.38	0.17	0.28	0.43	0.27	0.26	0.42	4.56
5 - 10 kts	0.91	0.78	0.71	0.71	0.60	0.77	0.87	0.95	0.90	1.45	1.44	1.21	1.49	1.03	1.17	0.98	15.99
10 - 15 kts	1.12	0.95	0.63	0.79	0.78	1.14	1.28	1.75	2.31	2.41	2.54	2.03	1.90	1.68	1.92	1.60	24.83
15 - 20 kts	1.18	0.65	0.38	0.52	0.74	0.66	1.32	1.49	1.85	2.78	2.65	2.58	2.57	1.77	1.96	2.03	25.13
20 - 25 kts	1.02	0.39	0.36	0.36	0.34	0.54	0.54	0.90	1.02	1.71	1.67	1.98	2.20	1.14	1.12	1.73	17.02
25 - 30 kts	0.44	0.13	0.08	0.20	0.15	0.17	0.17	0.19	0.58	0.91	1.13	1.16	1.08	0.87	0.70	0.67	8.64
30 - 35 kts	0.17	0.01	0.01	0.12	0.09	0.05	0.01	0.05	0.15	0.26	0.46	0.23	0.32	0.22	0.30	0.43	2.89
35 - 40 kts	•	0.01	•	•	•	0.03	0.01	•	0.03	0.04	0.04	0.08	0.09	0.13	0.04	0.15	0.66
40 - 45 kts	•	•	•	•	•	•	•	•	•	•	0.04	0.01	0.01	•	•	0.08	0.15
45 - 50 kts	•	•	•	•	•	•	•	•	•	•	•	•	•	•	•	•	•
Total	5.23	3.29	2.37	3.02	2.93	3.59	4.46	5.59	7.06	9.95	10.13	9.56	10.11	7.12	7.47	8.12	100.00