

UK Cable Route GT - Landing - July

Latitude: 53.31 N Longitude: 0.35 E

Weather Days

Wave Height > 6.0 ft Mean: 0.5 days Range: 0.0 - 1.2 days p50:30 days p75:0.5 days p90:0.5 days
Wave Height > 7.0 ft Mean: 0.2 days Range: 0.0 - 0.6 days p50:30 days p75:30 days p90:1 days
Wave Height > 8.0 ft Mean: 0.1 days Range: 0.0 - 0.3 days p50:30 days p75:30 days p90:30 days

Wind Speed > 15.0 knots Mean: 5.6 days Range: 3.0 - 8.1 days p50:5 days p75:4 days p90:3.5 days
Wind Speed > 20.0 knots Mean: 1.0 days Range: 0.0 - 2.1 days p50:1 days p75:0.5 days p90:0.5 days
Wind Speed > 25.0 knots Mean: 0.2 days Range: 0.0 - 0.6 days p50:0.5 days p75:0.5 days p90:0.5 days

Working Window

Wave Height < 6.0 ft	A 1 day or longer window will statistically occur 1.4 times per month A 2 day or longer window will statistically occur 1.3 times per month A 3 day or longer window will statistically occur 1.3 times per month
Wave Height < 7.0 ft	A 1 day or longer window will statistically occur 1.2 times per month A 2 day or longer window will statistically occur 1.1 times per month A 3 day or longer window will statistically occur 1.1 times per month
Wave Height < 8.0 ft	A 1 day or longer window will statistically occur 1.1 times per month A 2 day or longer window will statistically occur 1.0 times per month A 3 day or longer window will statistically occur 1.0 times per month

Waves

Mean Height: 1 - 2 ft
The wave heights will occasionally reach 6 - 8 ft, but rarely higher.
Mean Period: 4 - 6 sec
The wave periods will occasionally reach 8 - 10 sec, but rarely longer.
Principle Direction, from: N
WindSea/Swell: 37% / 63%

Winds

Mean Speed: 10 - 15 kts
The winds will occasionally reach 25 - 30 kts, but rarely greater.
Principle Direction, from: W

Currents

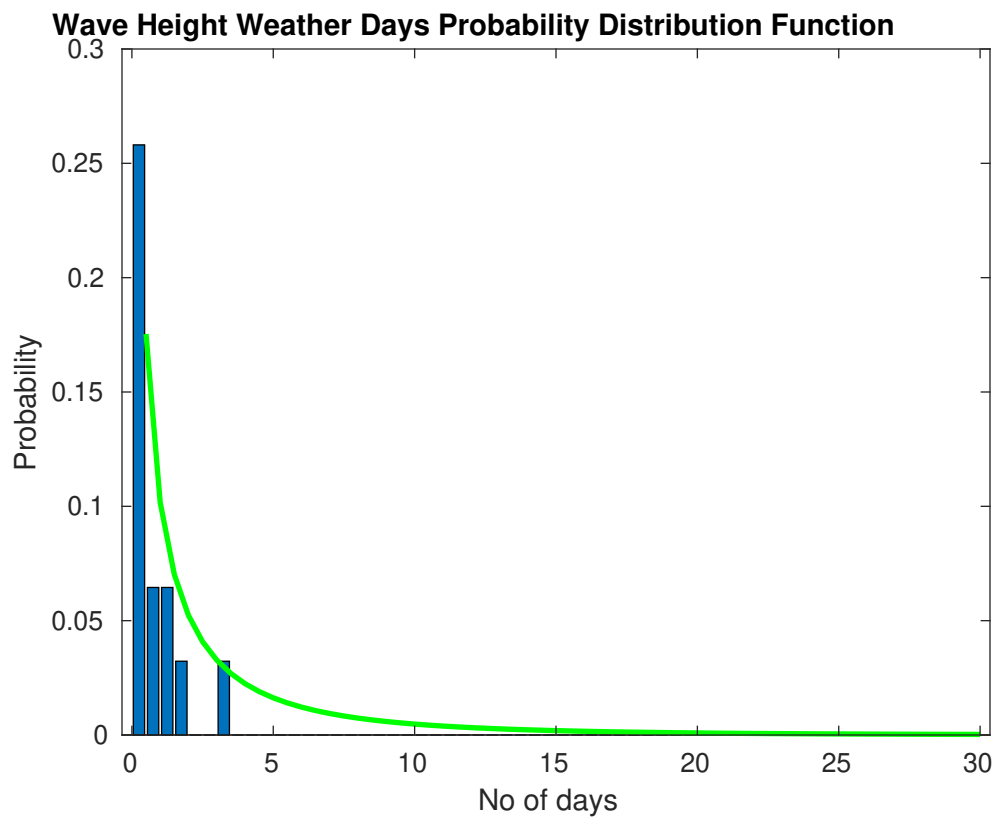
Mean Speed: 0.01-0.25 kts
The currents will occasionally reach 0.75-1.00 kts, but rarely greater.
Principle Direction, to: NE

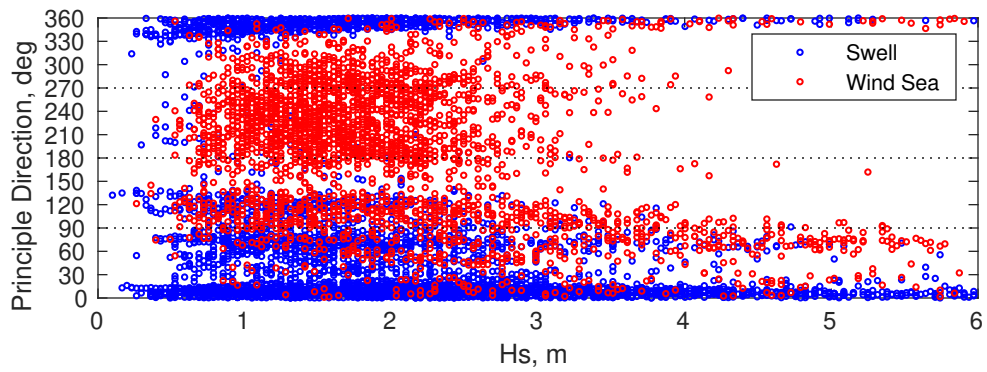
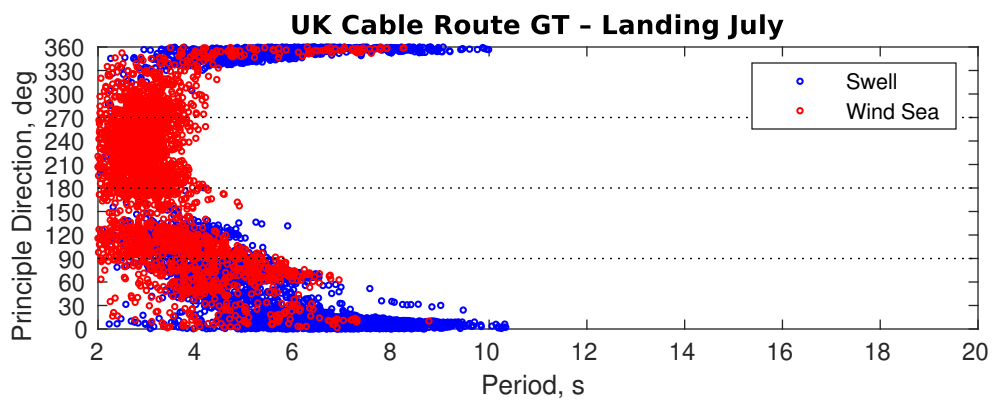
Weather Days

Current Speed > 1.0 knots Mean: 0.1 days Range: 0.0 - 0.3 days p50:1 days p75:1 days p90:1 days
Current Speed > 1.5 knots Mean: 0.0 days Range: 0.0 - 0.0 days p50:1 days p75:1 days p90:1 days
Current Speed > 2.0 knots Mean: 0.0 days Range: 0.0 - 0.0 days p50:1 days p75:1 days p90:1 days

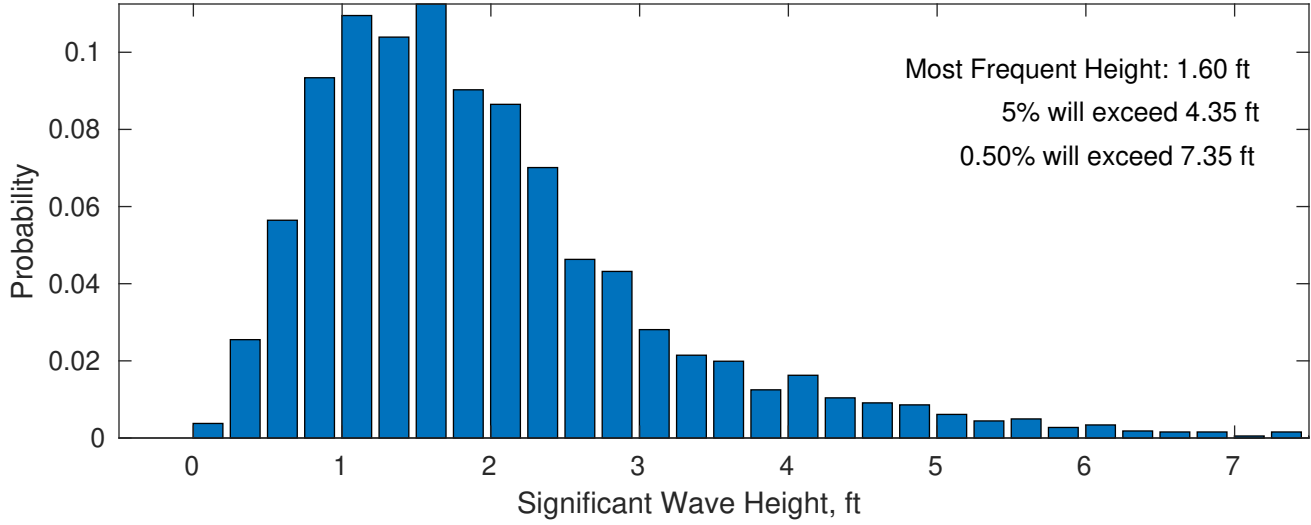
Severe Storms

Severe storms with gale force winds and extreme waves are not expected during this month.

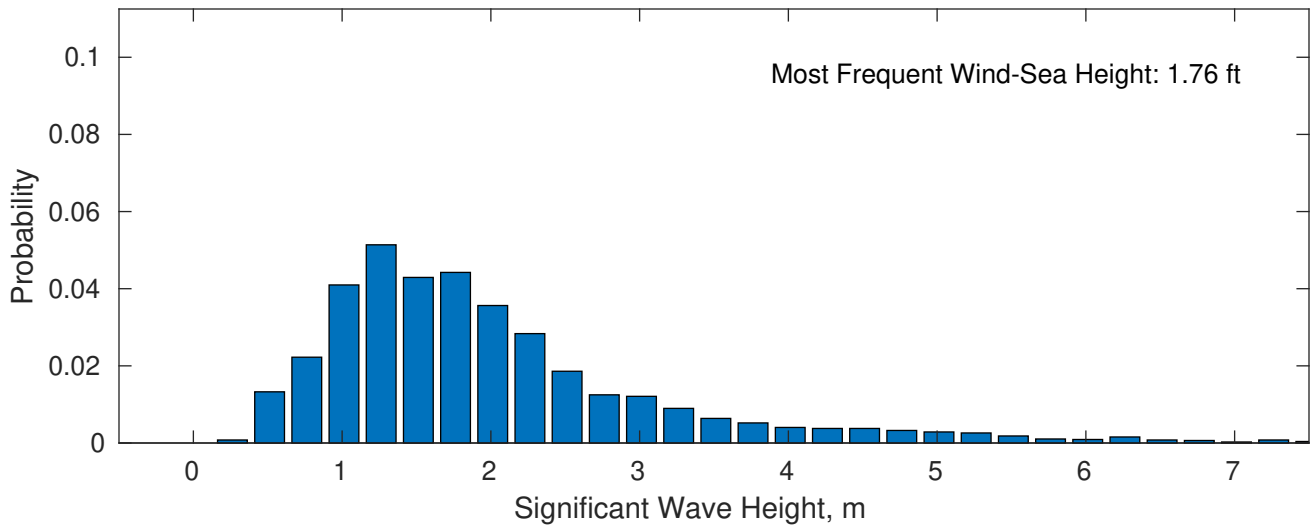




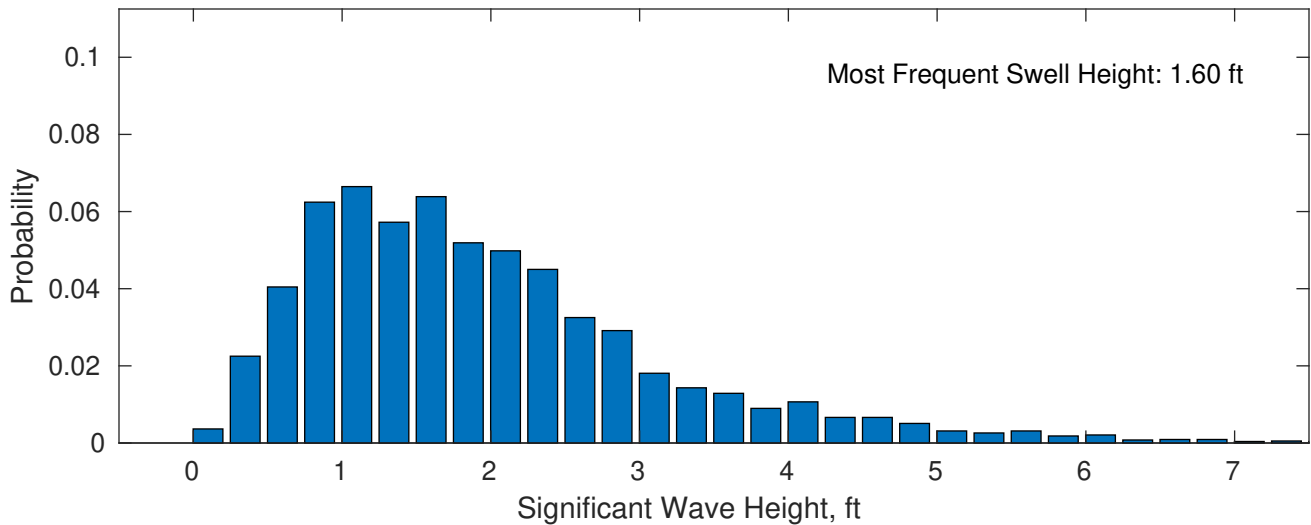
July Wave Height PDF: 1979 - 2015



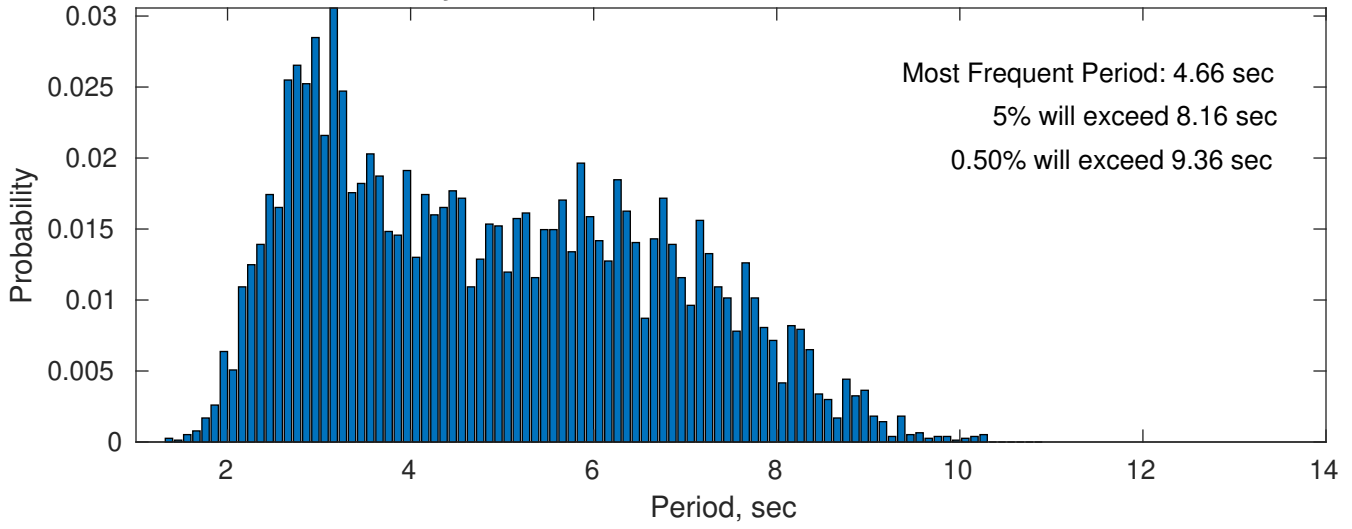
Wind-Sea: 37.36%



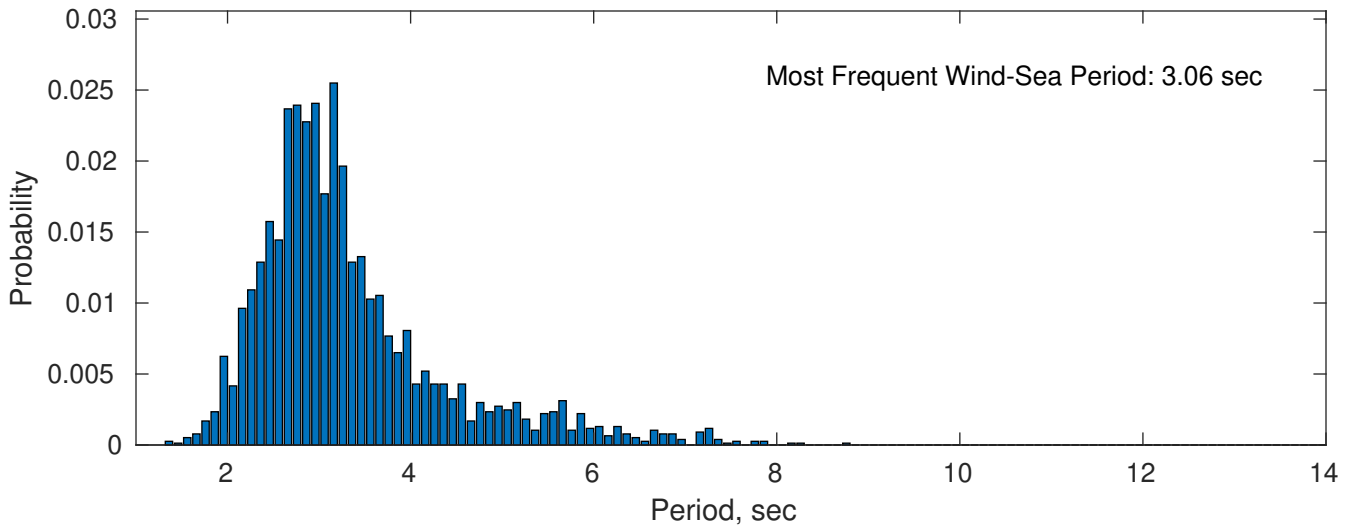
Swell: 62.64%



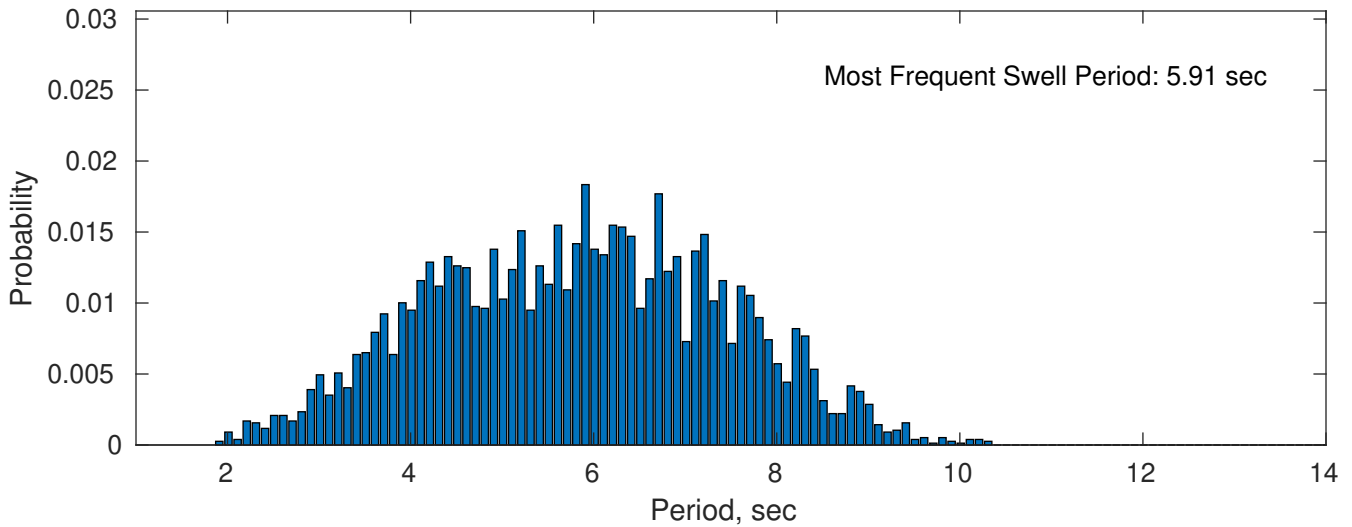
July Peak Wave Period PDF: 1979 - 2015



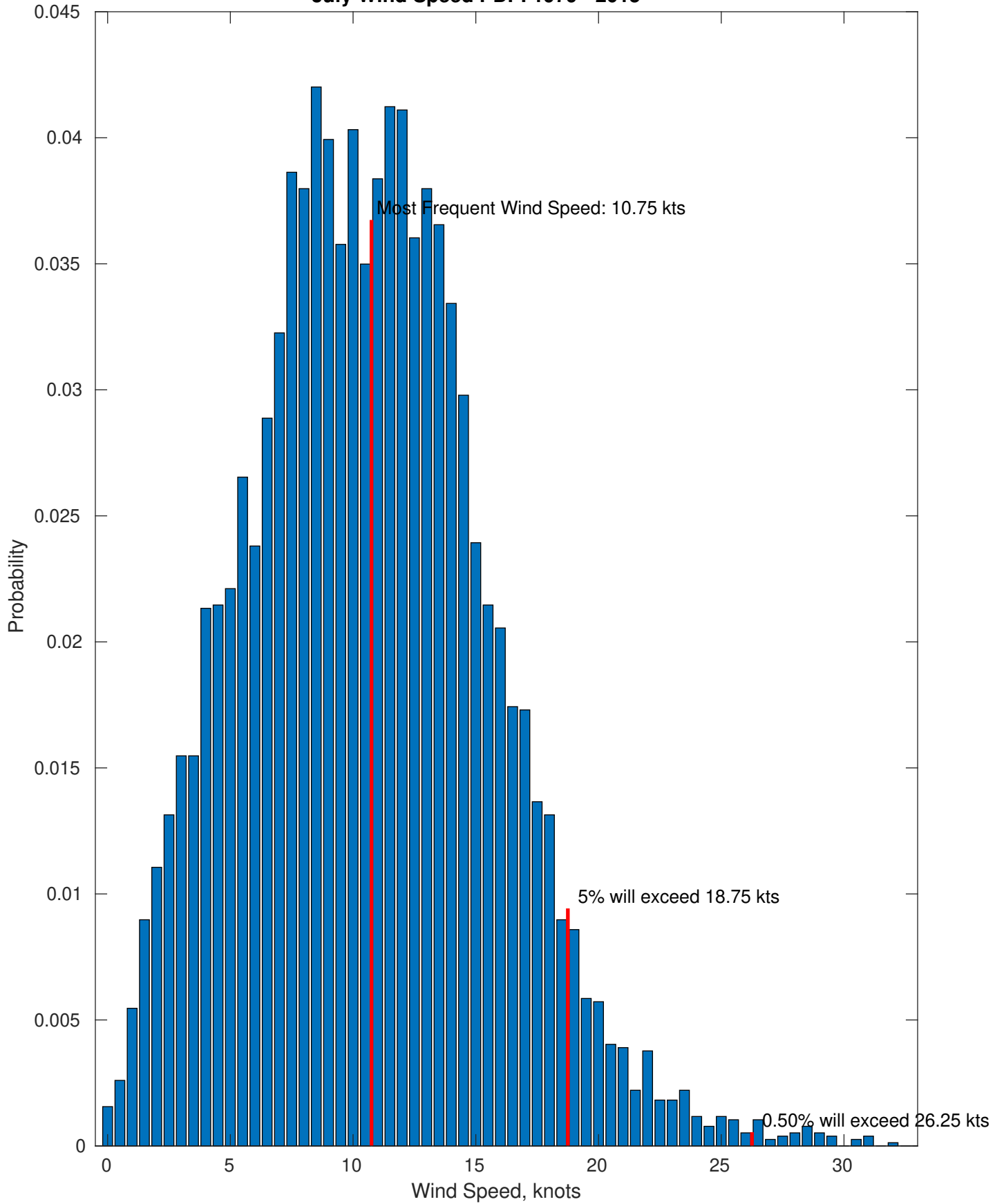
Wind-Sea: 37.36%



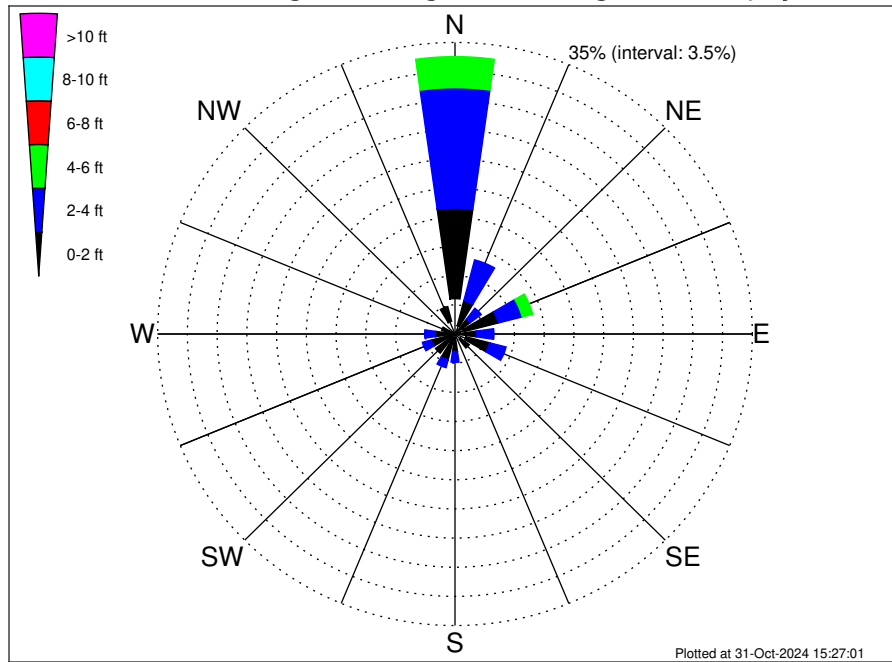
Swell: 62.64%



July Wind Speed PDF: 1979 - 2015



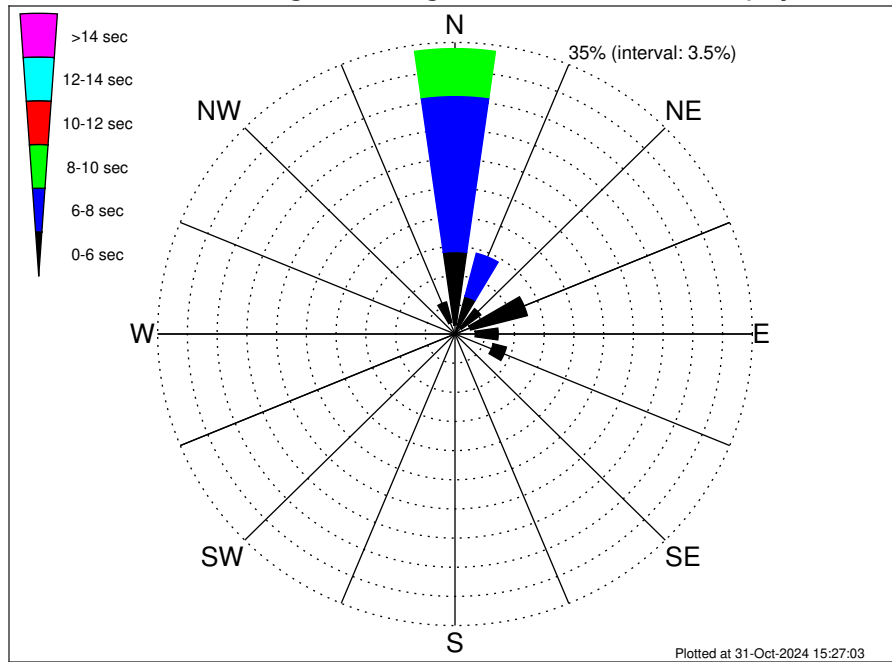
UK Cable Route GT - Landing Climatological WaveHeight Rose for July: 1979 - 2015



Joint Frequency Distribution Table

	N	NNE	NE	ENE	E	ESE	SE	SSE	S	SSW	SW	WSW	W	WNW	NW	NNW	Total
calm	4.24	1.03	0.56	1.09	0.64	1.31	0.78	0.16	0.46	0.61	0.47	0.55	0.33	0.17	0.20	1.57	14.15
1 - 2 ft	10.87	3.11	1.69	4.18	1.93	2.89	1.34	0.48	1.65	2.58	2.42	2.34	1.99	1.46	0.70	1.83	41.45
2 - 4 ft	14.45	5.06	1.63	2.90	2.03	2.02	0.61	0.38	1.30	0.99	0.86	1.08	1.26	0.78	0.36	0.60	36.30
4 - 6 ft	3.73	0.75	0.18	1.29	0.47	0.04	•	0.03	0.03	•	•	0.01	•	0.01	•	0.03	6.57
6 - 8 ft	0.86	0.18	0.05	0.12	0.03	•	•	•	•	•	•	•	•	•	•	•	1.24
8 - 10 ft	0.22	•	•	0.07	•	•	•	•	•	•	•	•	•	•	•	•	0.29
10 - 12 ft	•	•	•	•	•	•	•	•	•	•	•	•	•	•	•	•	•
12 - 14 ft	•	•	•	•	•	•	•	•	•	•	•	•	•	•	•	•	•
14 - 16 ft	•	•	•	•	•	•	•	•	•	•	•	•	•	•	•	•	•
16 - 18 ft	•	•	•	•	•	•	•	•	•	•	•	•	•	•	•	•	•
> 18 ft	•	•	•	•	•	•	•	•	•	•	•	•	•	•	•	•	•
Total	34.38	10.13	4.11	9.64	5.09	6.26	2.73	1.04	3.43	4.18	3.75	3.98	3.58	2.42	1.26	4.03	100.00

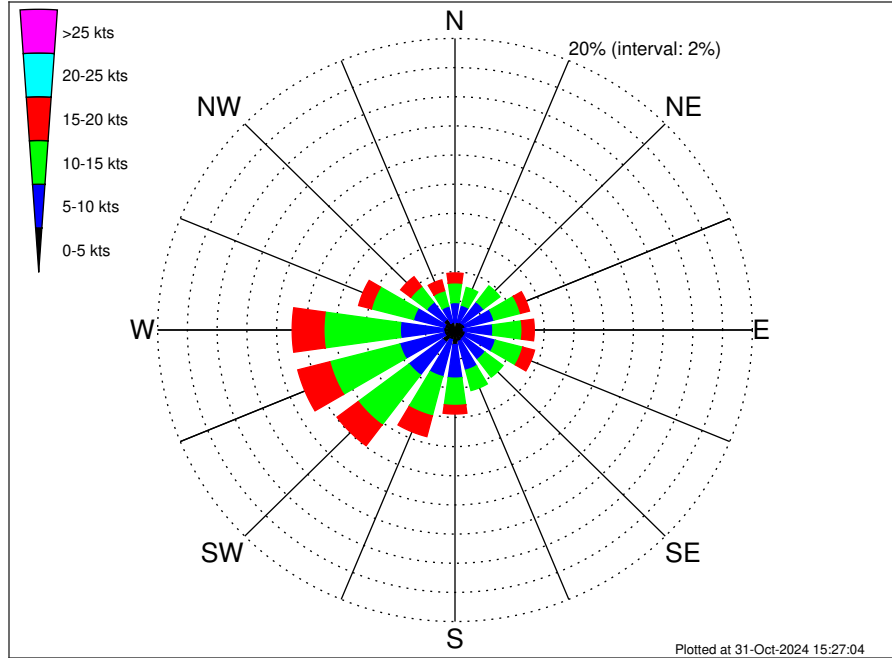
UK Cable Route GT - Landing Climatological WavePeriod Rose for July: 1979 - 2015



Joint Frequency Distribution Table

	N	NNE	NE	ENE	E	ESE	SE	SSE	S	SSW	SW	WSW	W	WNW	NW	NNW	Total
calm	•	•	•	•	•	•	•	•	•	•	•	•	•	•	•	•	•
1 - 2 sec	0.01	0.01	•	0.04	0.01	0.13	0.13	0.01	0.08	0.12	0.09	0.09	0.03	•	•	0.03	0.78
2 - 4 sec	1.08	0.36	0.95	1.85	2.37	4.51	2.06	0.96	3.23	4.06	3.66	3.86	3.51	2.35	1.21	1.43	37.45
4 - 6 sec	8.81	4.31	2.86	6.92	2.71	1.61	0.55	0.07	0.13	•	•	0.03	0.04	0.07	0.05	2.52	30.66
6 - 8 sec	18.76	5.33	0.27	0.83	•	•	•	•	•	•	•	•	•	•	•	0.05	25.25
8 - 10 sec	5.61	0.12	0.03	•	•	•	•	•	•	•	•	•	•	•	•	•	5.75
10 - 12 sec	0.12	•	•	•	•	•	•	•	•	•	•	•	•	•	•	•	0.12
12 - 14 sec	•	•	•	•	•	•	•	•	•	•	•	•	•	•	•	•	•
14 - 16 sec	•	•	•	•	•	•	•	•	•	•	•	•	•	•	•	•	•
18 - 20 sec	•	•	•	•	•	•	•	•	•	•	•	•	•	•	•	•	•
22 - 24 sec	•	•	•	•	•	•	•	•	•	•	•	•	•	•	•	•	•
Total	34.38	10.13	4.11	9.64	5.09	6.26	2.73	1.04	3.43	4.18	3.75	3.98	3.58	2.42	1.26	4.03	100.00

UK Cable Route GT - Landing Climatological Wind Rose for July: 1979 - 2015



Joint Frequency Distribution Table

	N	NNE	NE	ENE	E	ESE	SE	SSE	S	SSW	SW	WSW	W	WNW	NW	NNW	Total
calm	0.04	0.04	0.03	0.04	•	0.04	0.04	0.03	0.03	•	0.01	0.03	0.01	0.04	0.04	0.01	0.42
0 - 5 kts	0.46	0.52	0.61	0.66	0.57	0.69	0.69	0.78	0.98	0.69	1.01	0.72	0.75	0.69	0.88	0.53	11.24
5 - 10 kts	1.39	1.20	1.77	2.00	1.98	2.08	1.80	2.04	2.30	2.61	2.85	3.10	2.91	2.16	1.46	1.14	32.79
10 - 15 kts	1.35	1.26	1.38	1.85	1.96	1.90	1.52	1.44	1.87	2.78	4.28	4.86	5.14	2.93	1.35	1.09	36.98
15 - 20 kts	0.68	0.42	0.35	0.62	0.82	0.82	0.42	0.27	0.59	1.47	1.78	2.22	2.13	0.88	0.85	0.77	15.09
20 - 25 kts	0.18	0.08	•	0.08	0.05	0.03	•	0.01	0.05	0.22	0.25	0.46	0.47	0.17	0.25	0.46	2.74
25 - 30 kts	0.03	0.01	0.04	0.07	0.03	•	•	0.01	0.04	0.03	•	0.04	0.05	0.01	0.01	0.30	0.66
30 - 35 kts	•	•	0.01	0.01	0.03	•	•	•	•	•	•	•	•	•	•	0.03	0.08
35 - 40 kts	•	•	•	•	•	•	•	•	•	•	•	•	•	•	•	•	•
40 - 45 kts	•	•	•	•	•	•	•	•	•	•	•	•	•	•	•	•	•
45 - 50 kts	•	•	•	•	•	•	•	•	•	•	•	•	•	•	•	•	•
Total	4.12	3.52	4.19	5.33	5.44	5.55	4.46	4.59	5.85	7.80	10.18	11.42	11.47	6.88	4.84	4.33	100.00