

UK Cable Route GT - Landing - September

Latitude: 53.31 N Longitude: 0.35 E

Weather Days

Wave Height > 6.0 ft Mean: 1.6 days Range: 0.0 - 3.5 days p50:3 days p75:1 days p90:0.5 days

Wave Height > 7.0 ft Mean: 0.9 days Range: 0.0 - 2.3 days p50:5 days p75:1 days p90:0.5 days

Wave Height > 8.0 ft Mean: 0.5 days Range: 0.0 - 1.5 days p50:30 days p75:2 days p90:1 days

Wind Speed > 15.0 knots Mean: 10.6 days Range: 7.5 - 13.7 days p50:10.5 days p75:9 days p90:7.5 days

Wind Speed > 20.0 knots Mean: 3.9 days Range: 1.9 - 6.0 days p50:4 days p75:2.5 days p90:2 days

Wind Speed > 25.0 knots Mean: 1.2 days Range: 0.1 - 2.4 days p50:1 days p75:0.5 days p90:0.5 days

Working Window

Wave Height < 6.0 ft
A 1 day or longer window will statistically occur 2.1 times per month
A 2 day or longer window will statistically occur 2.0 times per month
A 3 day or longer window will statistically occur 1.8 times per month

Wave Height < 7.0 ft
A 1 day or longer window will statistically occur 1.6 times per month
A 2 day or longer window will statistically occur 1.5 times per month
A 3 day or longer window will statistically occur 1.5 times per month

Wave Height < 8.0 ft
A 1 day or longer window will statistically occur 1.3 times per month
A 2 day or longer window will statistically occur 1.3 times per month
A 3 day or longer window will statistically occur 1.3 times per month

Waves

Mean Height: 2 - 4 ft

The wave heights will occasionally reach 8 - 10 ft, but rarely higher.

Mean Period: 4 - 6 sec

The wave periods will occasionally reach 10 - 12 sec, but rarely longer.

Principle Direction, from: N

WindSea/Swell: 42% / 58%

Winds

Mean Speed: 10 - 15 kts

The winds will occasionally reach 30 - 35 kts, but rarely greater.

Principle Direction, from: SW

Currents

Mean Speed: 0.25-0.50 kts

The currents will occasionally reach 1.00-1.25 kts, but rarely greater.

Principle Direction, to: N

Weather Days

Current Speed > 1.0 knots Mean: 0.1 days Range: 0.0 - 0.5 days p50:1 days p75:1 days p90:1 days

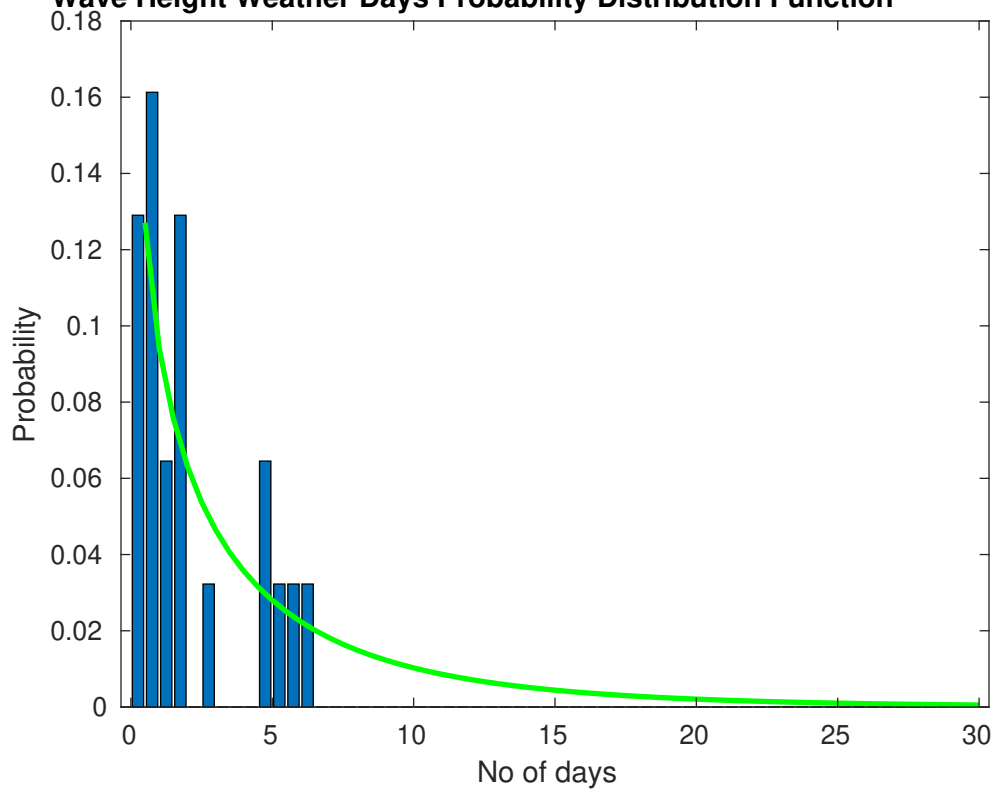
Current Speed > 1.5 knots Mean: 0.0 days Range: 0.0 - 0.0 days p50:1 days p75:1 days p90:1 days

Current Speed > 2.0 knots Mean: 0.0 days Range: 0.0 - 0.0 days p50:1 days p75:1 days p90:1 days

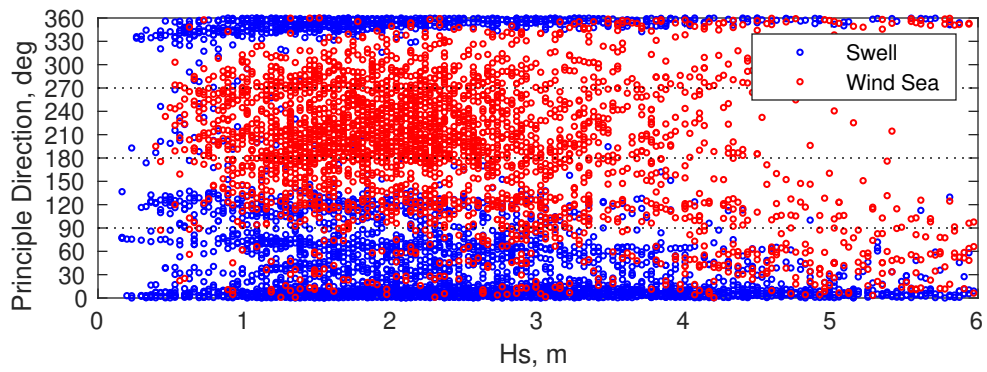
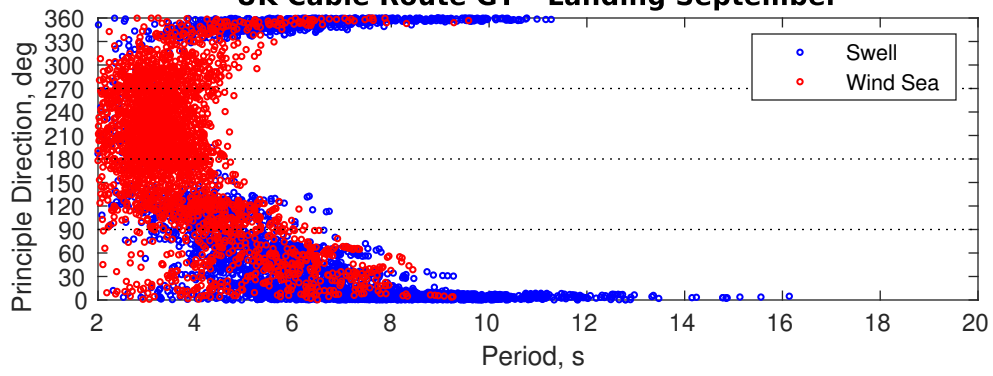
Severe Storms

Severe storms with gale force winds and extreme waves are not expected during this month.

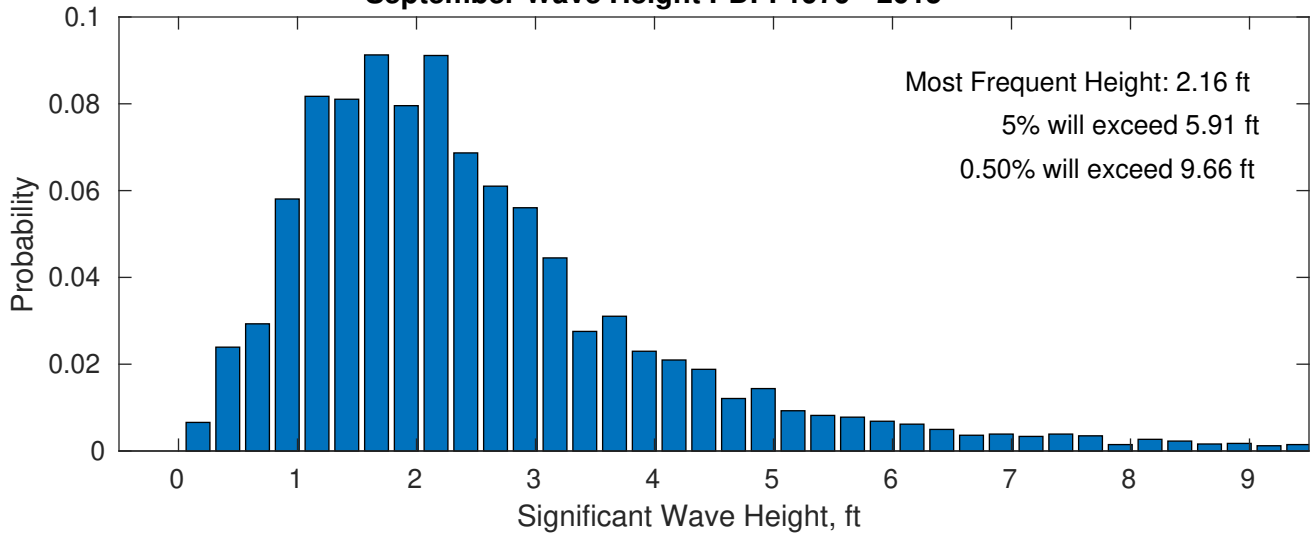
Wave Height Weather Days Probability Distribution Function



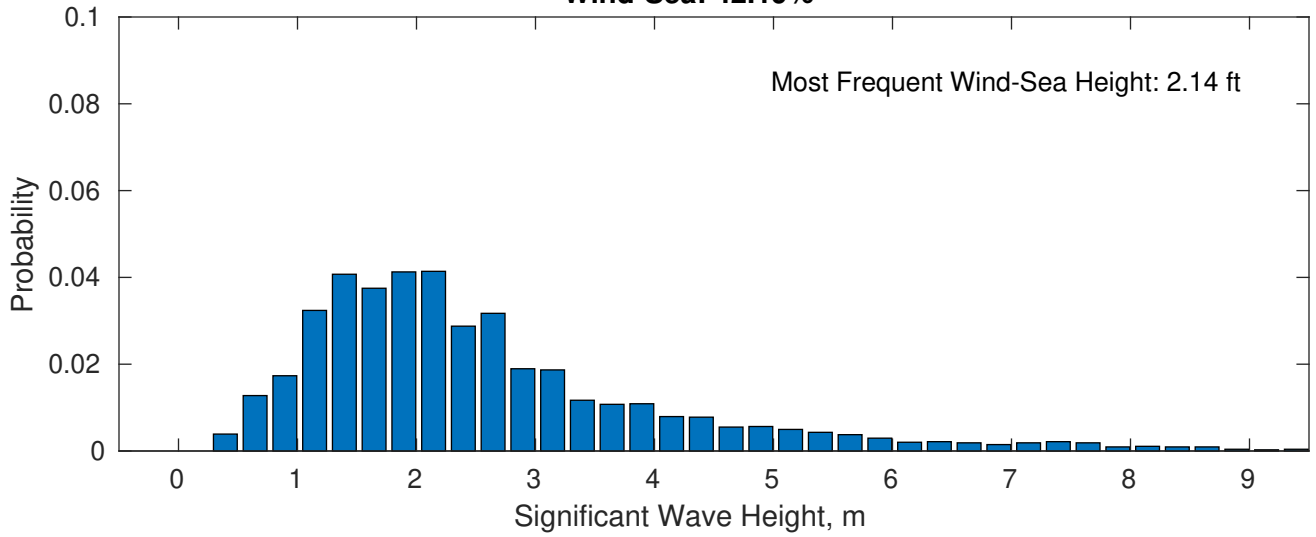
UK Cable Route GT - Landing September



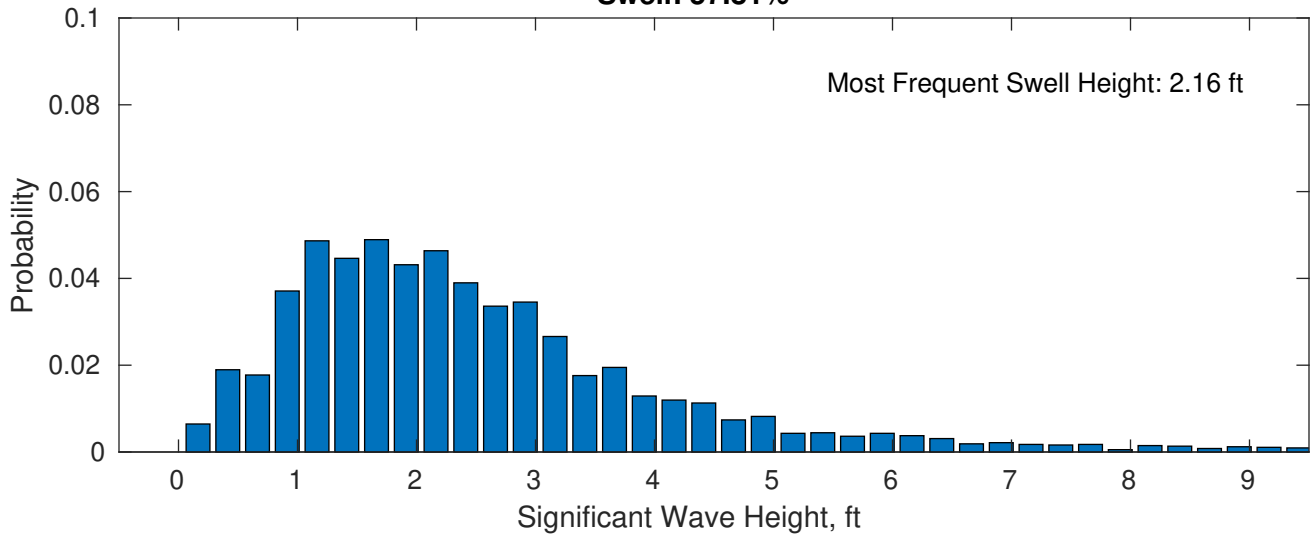
September Wave Height PDF: 1979 - 2015



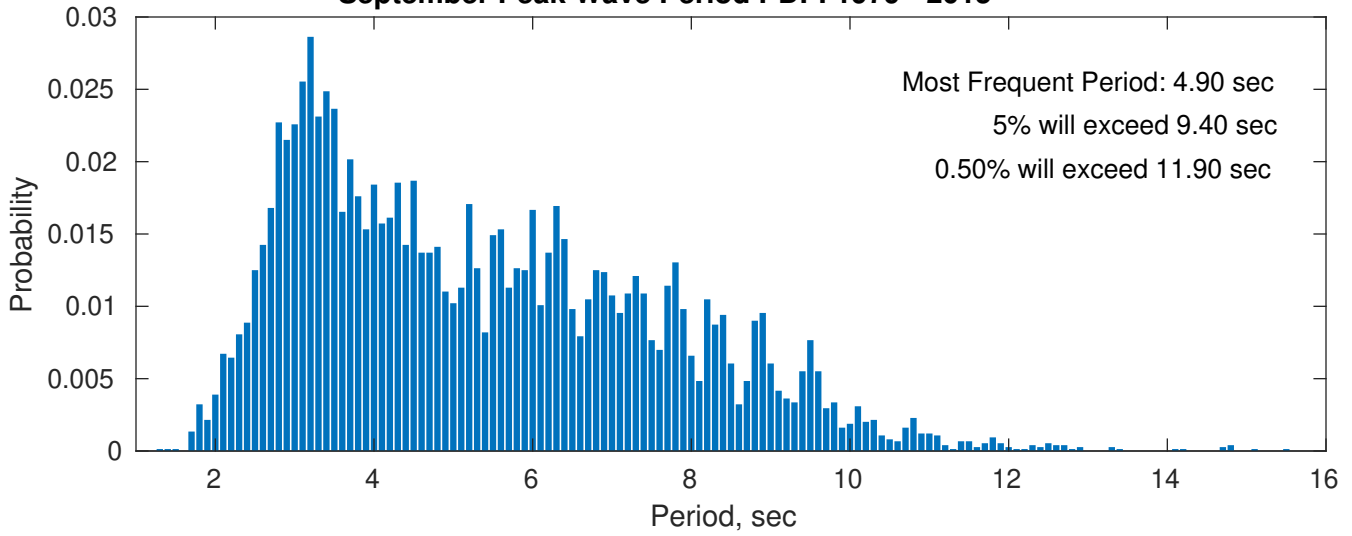
Wind-Sea: 42.19%



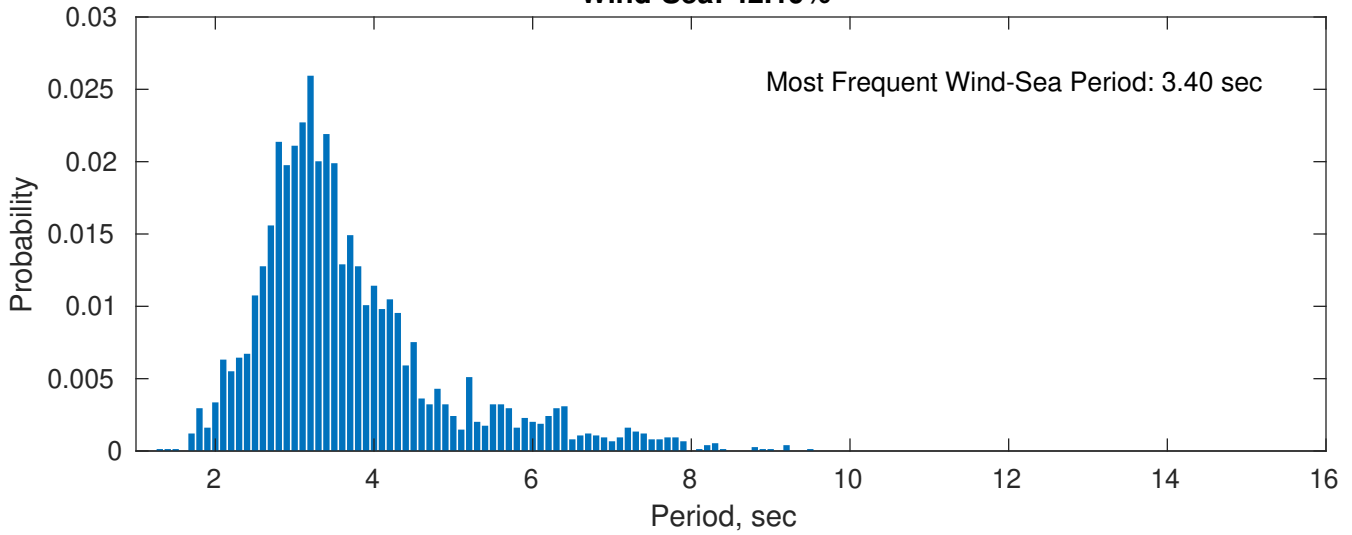
Swell: 57.81%



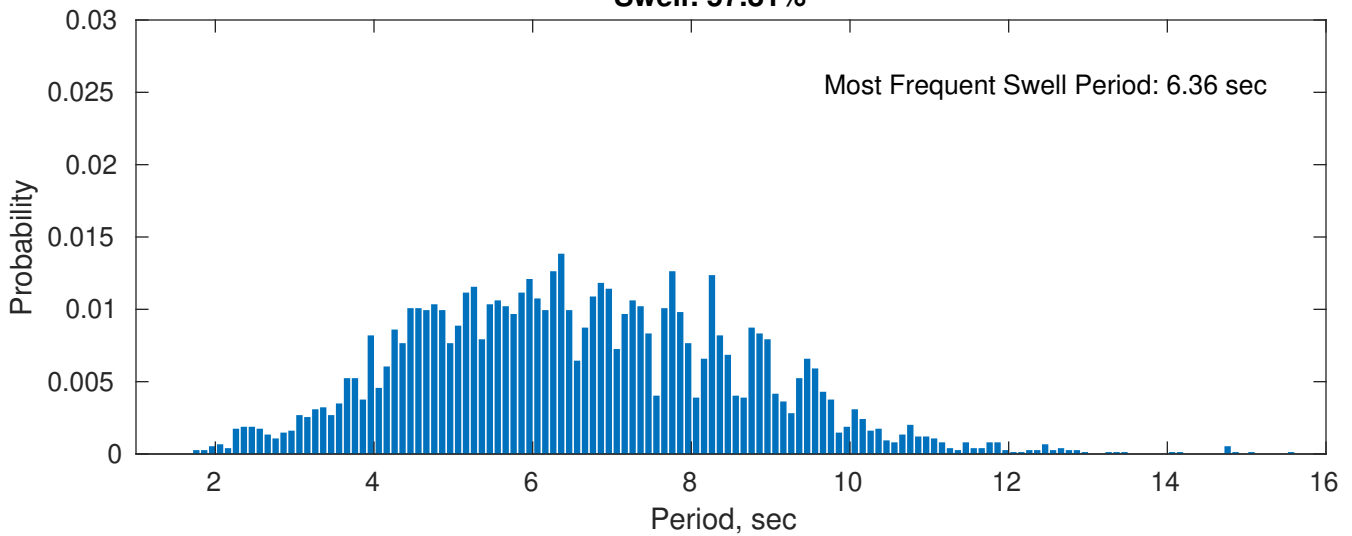
September Peak Wave Period PDF: 1979 - 2015



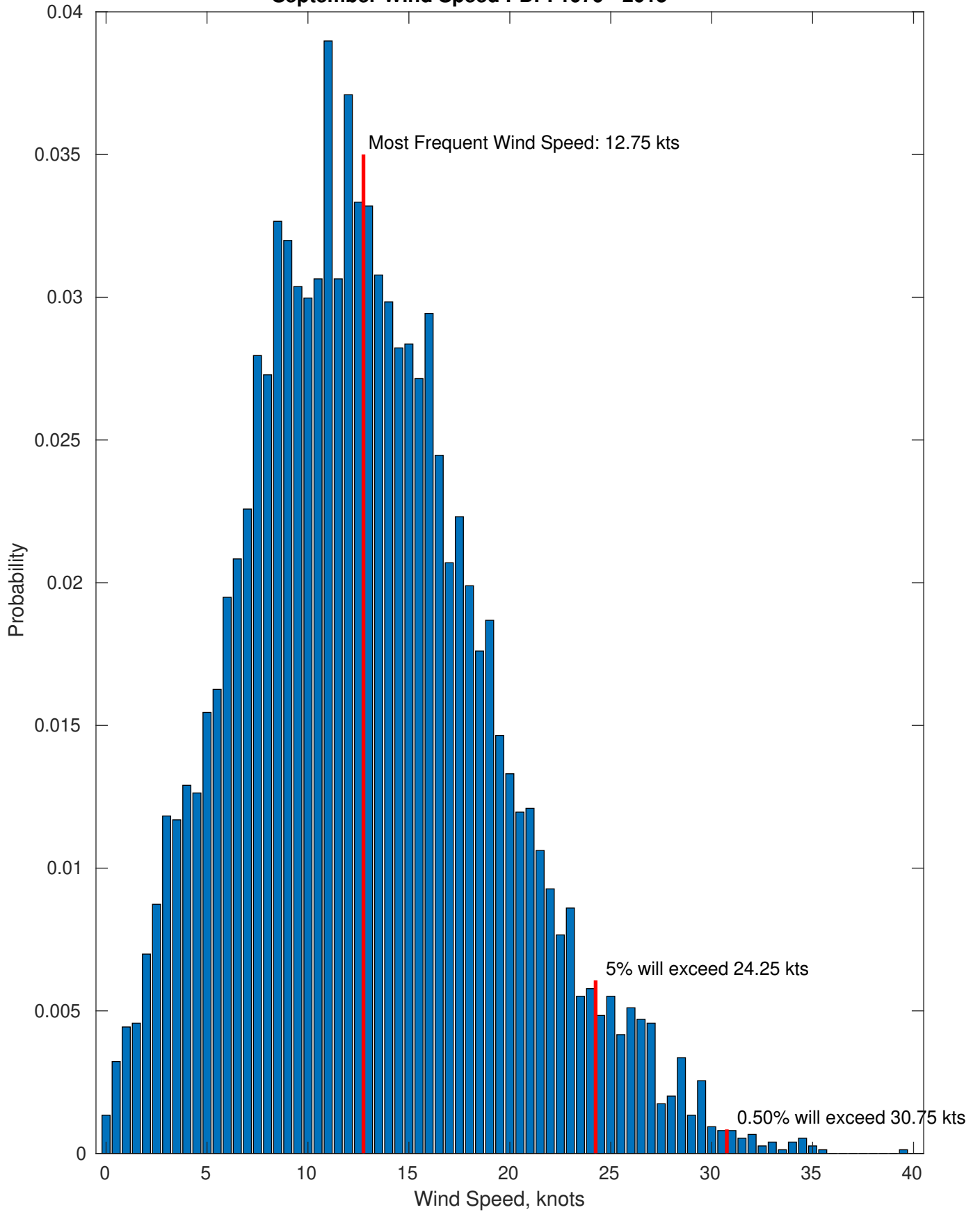
Wind-Sea: 42.19%



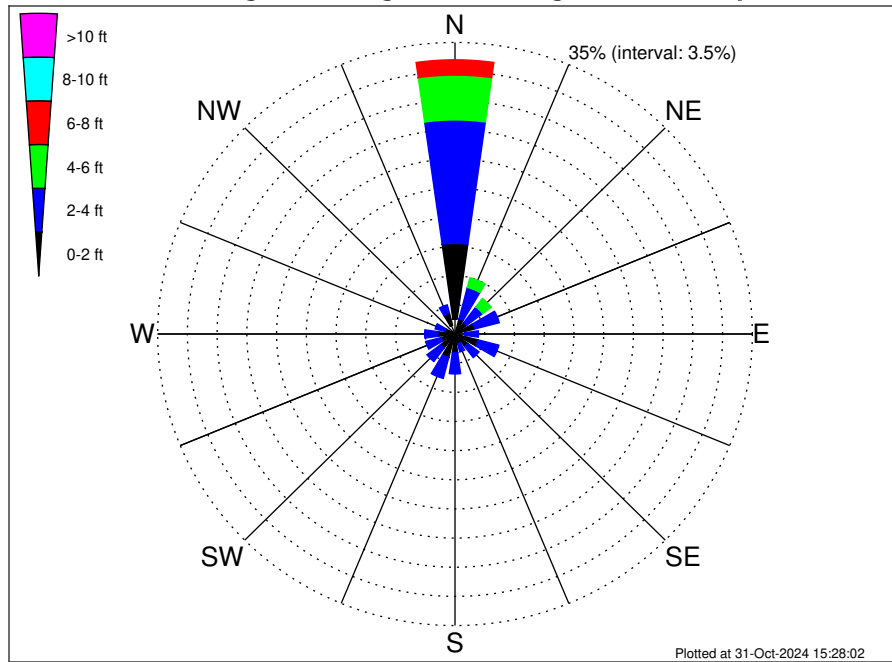
Swell: 57.81%



September Wind Speed PDF: 1979 - 2015



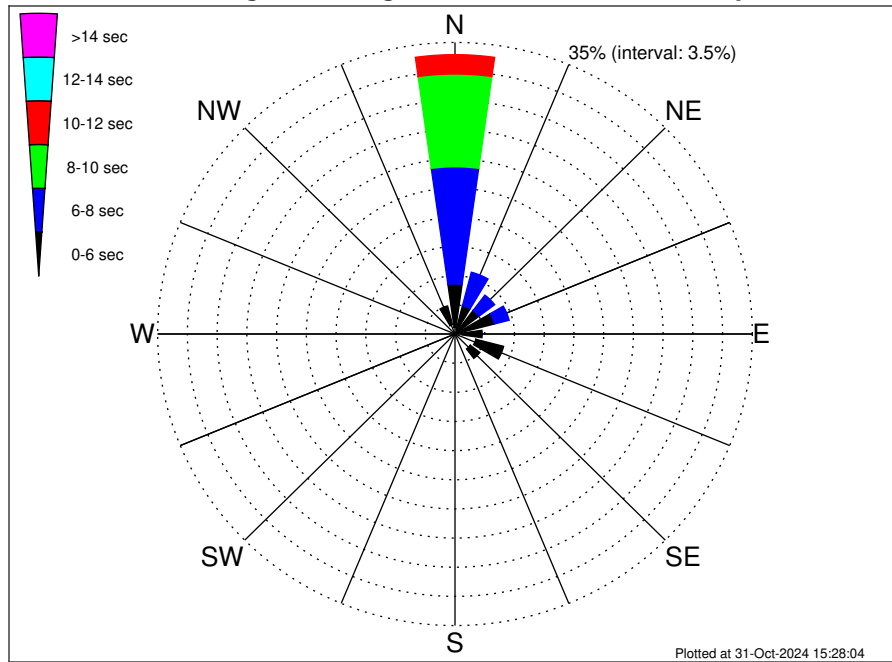
UK Cable Route GT - Landing Climatological WaveHeight Rose for September: 1979 - 2015



Joint Frequency Distribution Table

	N	NNE	NE	ENE	E	ESE	SE	SSE	S	SSW	SW	WSW	W	WNW	NW	NNW	Total
calm	1.77	0.38	0.13	0.43	0.36	0.59	0.60	0.15	0.32	0.54	0.34	0.38	0.43	0.22	0.15	1.09	7.88
1 - 2 ft	9.10	1.53	1.57	1.96	0.81	2.20	1.29	1.06	1.95	2.37	1.81	1.30	1.60	0.99	0.50	1.52	31.57
2 - 4 ft	14.83	3.87	2.37	3.00	1.60	2.54	1.65	1.02	2.53	2.61	1.99	1.90	1.55	1.21	0.51	1.01	44.17
4 - 6 ft	5.38	1.20	1.26	0.73	0.39	0.62	0.15	0.12	0.19	0.07	0.11	0.08	0.24	0.32	0.17	0.12	11.14
6 - 8 ft	1.84	0.65	0.39	0.42	0.16	0.01	0.01	0.01	0.01	0.01	3.52
8 - 10 ft	0.83	0.31	0.20	0.05	1.40
10 - 12 ft	0.26	0.05	0.01	0.32
12 - 14 ft
14 - 16 ft
16 - 18 ft
> 18 ft
Total	34.01	7.98	5.94	6.59	3.32	5.97	3.70	2.35	4.99	5.58	4.25	3.66	3.83	2.76	1.34	3.75	100.00

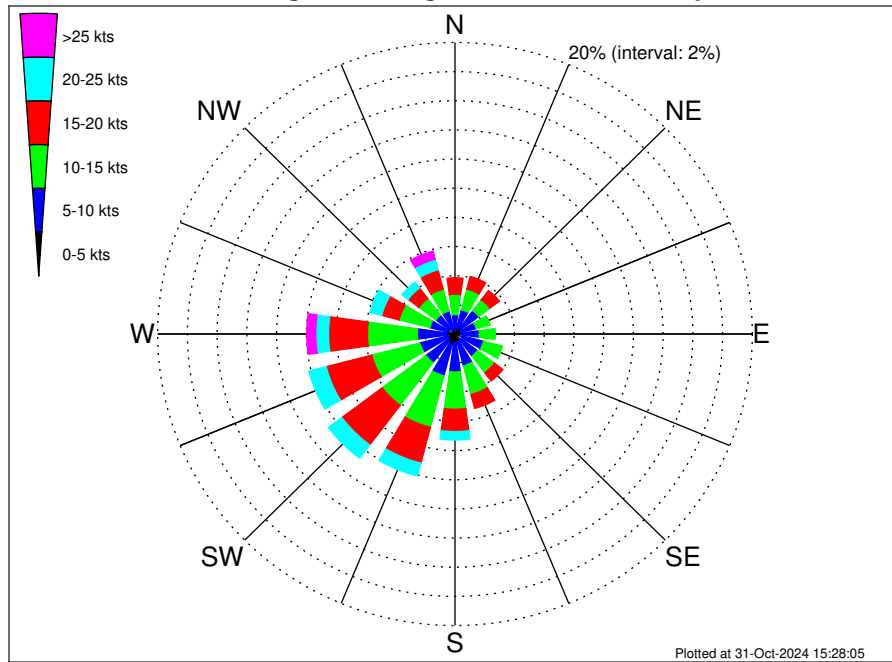
UK Cable Route GT - Landing Climatological WavePeriod Rose for September: 1979 - 2015



Joint Frequency Distribution Table

	N	NNE	NE	ENE	E	ESE	SE	SSE	S	SSW	SW	WSW	W	WNW	NW	NNW	Total
calm	•	•	•	•	•	•	•	•	•	•	•	•	•	•	•	•	•
1 - 2 sec	0.03	0.03	0.01	0.01	0.04	0.05	0.03	0.03	0.12	0.07	0.07	0.09	0.07	0.01	0.03	0.03	0.71
2 - 4 sec	0.77	0.56	0.32	0.43	0.79	2.47	2.22	1.87	4.31	5.20	3.95	3.44	3.43	2.27	1.01	1.13	34.18
4 - 6 sec	5.22	2.93	3.20	4.35	2.37	3.39	1.42	0.46	0.55	0.31	0.23	0.12	0.34	0.47	0.31	2.33	27.98
6 - 8 sec	14.07	4.14	2.31	1.79	0.12	0.05	0.03	•	•	•	•	•	•	•	•	0.27	22.78
8 - 10 sec	11.13	0.32	0.09	•	•	•	•	•	•	•	•	•	•	•	•	•	11.55
10 - 12 sec	2.33	•	•	•	•	•	•	•	•	•	•	•	•	•	•	•	2.33
12 - 14 sec	0.34	•	•	•	•	•	•	•	•	•	•	•	•	•	•	•	0.34
14 - 16 sec	0.12	•	•	•	•	•	•	•	•	•	•	•	•	•	•	•	0.12
18 - 20 sec	0.01	•	•	•	•	•	•	•	•	•	•	•	•	•	•	•	0.01
22 - 24 sec	•	•	•	•	•	•	•	•	•	•	•	•	•	•	•	•	•
Total	34.01	7.98	5.94	6.59	3.32	5.97	3.70	2.35	4.99	5.58	4.25	3.66	3.83	2.76	1.34	3.75	100.00

UK Cable Route GT - Landing Climatological Wind Rose for September: 1979 - 2015



Joint Frequency Distribution Table

	N	NNE	NE	ENE	E	ESE	SE	SSE	S	SSW	SW	WSW	W	WNW	NW	NNW	Total
calm	0.01	0.04	0.03	0.03	0.05	0.04	0.04	•	0.01	0.07	•	0.03	•	0.04	0.03	0.04	0.46
0 - 5 kts	0.24	0.34	0.52	0.43	0.35	0.47	0.47	0.56	0.60	0.69	0.54	0.47	0.55	0.42	0.43	0.30	7.38
5 - 10 kts	1.08	1.34	1.45	1.02	1.24	1.48	1.38	1.69	1.99	2.20	1.92	1.95	1.99	1.30	1.16	1.29	24.49
10 - 15 kts	1.40	1.47	0.94	0.95	1.08	1.32	1.44	2.03	2.55	3.66	3.67	3.33	3.35	2.12	1.42	1.55	32.27
15 - 20 kts	1.13	0.89	0.79	0.36	0.23	0.48	0.70	0.98	1.53	2.54	3.40	3.17	2.62	1.21	0.91	1.37	22.33
20 - 25 kts	0.48	0.32	0.32	0.28	0.22	0.15	0.24	0.19	0.58	0.91	1.13	1.20	0.86	0.82	0.51	0.75	8.97
25 - 30 kts	0.32	0.11	0.13	0.11	0.11	0.03	0.03	0.04	0.13	0.31	0.35	0.36	0.52	0.15	0.32	0.48	3.51
30 - 35 kts	0.08	0.04	0.03	•	•	•	•	0.01	•	0.03	0.03	0.07	0.05	0.04	0.08	0.09	0.55
35 - 40 kts	•	•	•	•	•	•	•	0.01	•	•	•	•	0.03	•	0.01	•	0.05
40 - 45 kts	•	•	•	•	•	•	•	•	•	•	•	•	•	•	•	•	•
45 - 50 kts	•	•	•	•	•	•	•	•	•	•	•	•	•	•	•	•	•
Total	4.74	4.54	4.22	3.19	3.27	3.97	4.30	5.52	7.41	10.40	11.03	10.58	9.97	6.10	4.88	5.87	100.00