

\*\*\*\*\*

Marine Weather Forecast for CSA (ONHYM) PPL EBS - Cote d'Ivoire  
Forecast valid as of 22-Feb-2025 2100 GMT

\*\*\*\*\*

All times are local.

Today

Winds: NW, 5-10 kts.  
Waves: N, 3-4 feet, 11-12 sec.  
No currents available.

Tonight

Winds: NW, 10-15 kts.  
Waves: N, 2-3 feet, 10-11 sec.  
No currents available.

Sunday

Winds: NE, 5-10 kts.  
Waves: N, 2-3 feet, 11-12 sec.  
No currents available.

Monday Night

Winds: NW, 10-15 kts.  
Waves: N, 2-3 feet, 12-13 sec.  
No currents available.

Monday

Winds: NW, 15-20 kts.  
Waves: N, 2-3 feet, 10-11 sec.  
No currents available.

Tuesday Night

Winds: N, 10-15 kts.  
Waves: N, 2-3 feet, 12-13 sec.  
No currents available.

Tuesday

Winds: N, 10-15 kts.  
Waves: N, 2-3 feet, 13-14 sec.  
No currents available.

Wednesday Night

Winds: N, 10-15 kts.  
Waves: N, 3-4 feet, 18-19 sec.  
No currents available.

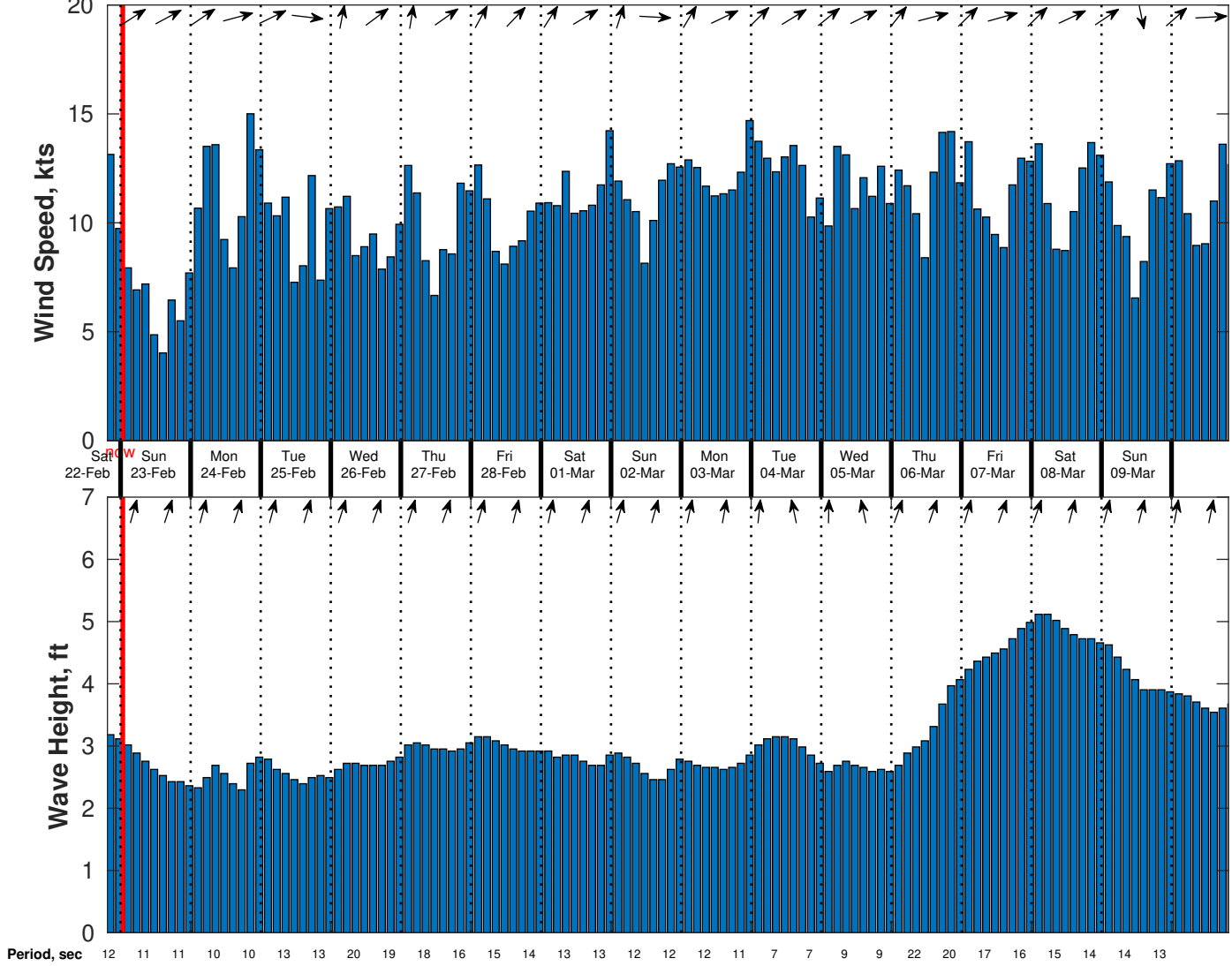
Wednesday

Winds: N, 5-10 kts.  
Waves: N, 2-3 feet, 20-21 sec.  
No currents available.

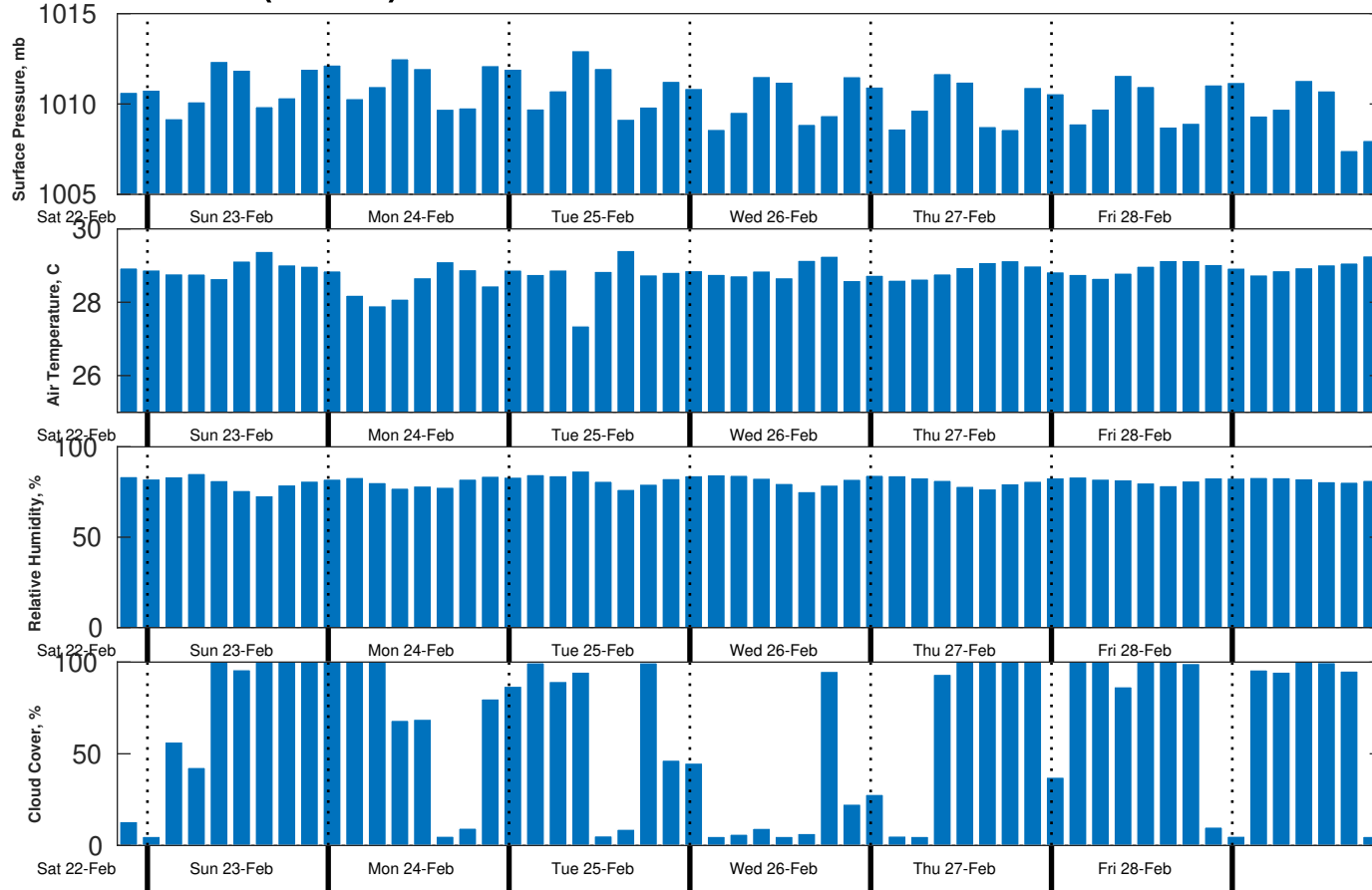
Thursday Night

Winds: N, 10-15 kts.  
Waves: N, 3-4 feet, 15-16 sec.  
No currents available.

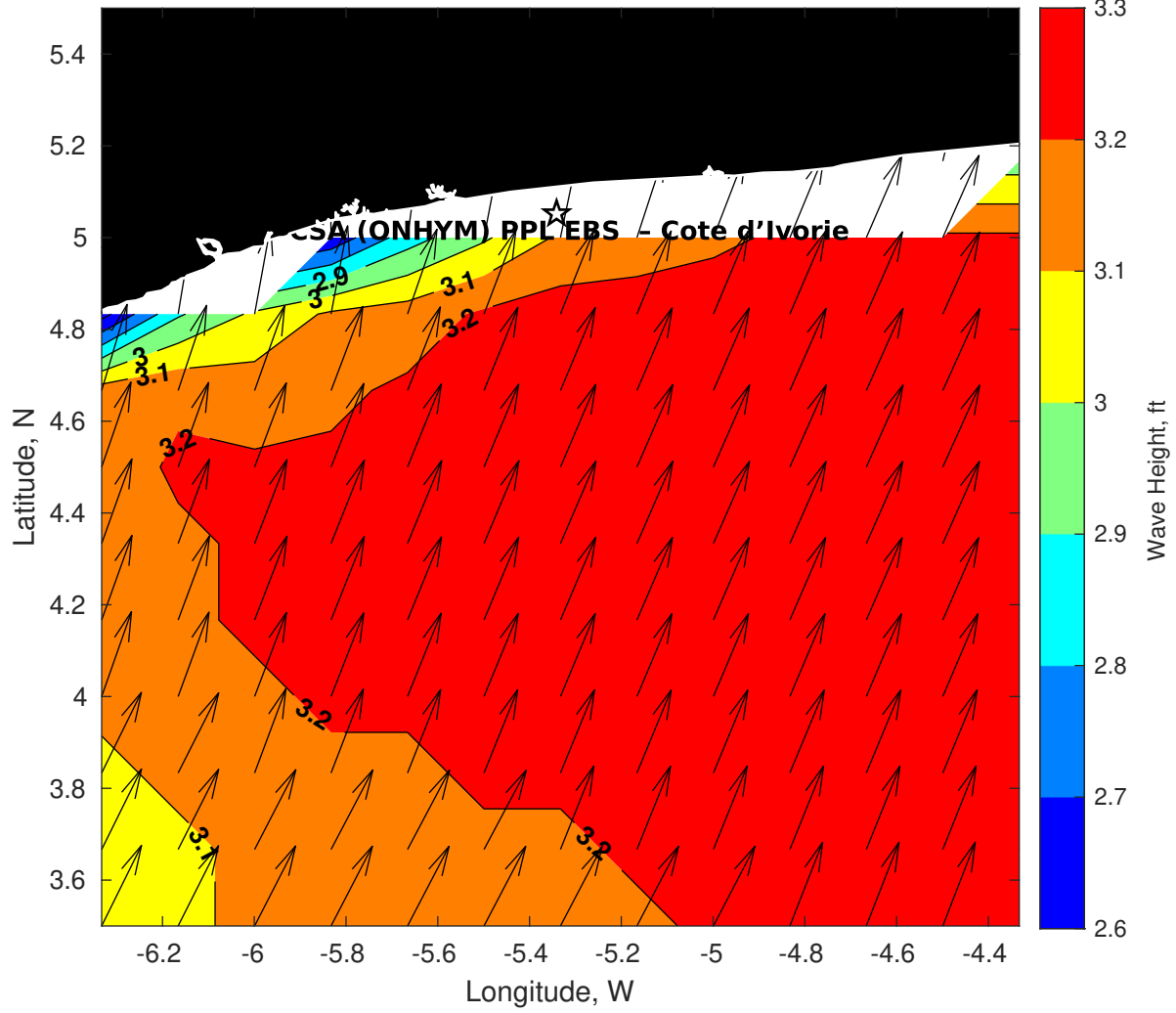
**Wind & Wave Forecast for CSA (ONHYM) PPL EBS - Cote d'Ivoire from 22-Feb-2025 19:00:00 to 10-Mar-2025 19:00:00**



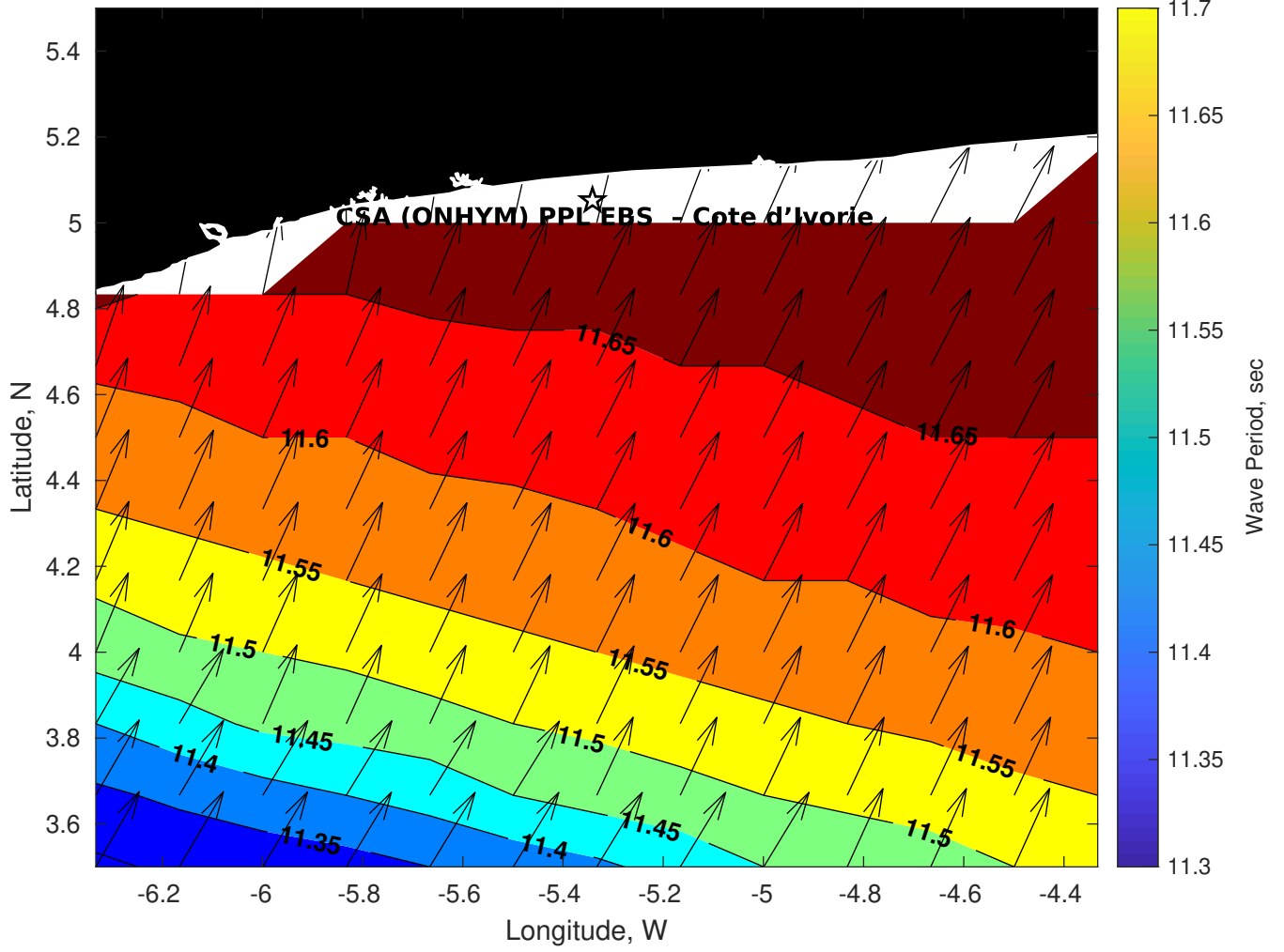
**Met Forecast for CSA (ONHYM) PPL EBS - Cote d'Ivoire from 22-Feb-2025 18:00:00 to 01-Mar-2025 18:00:00**



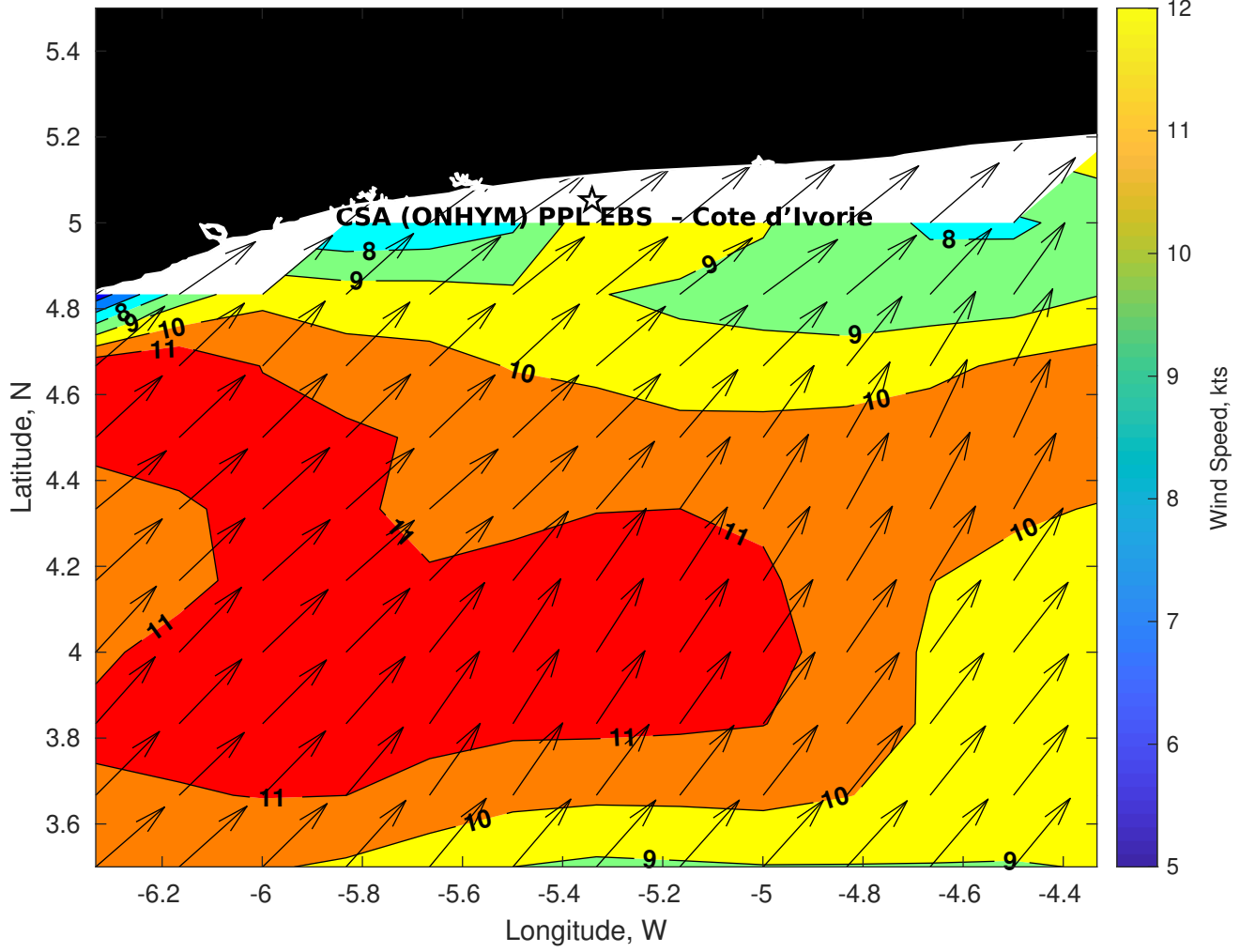
**Wave Height (ft) for CSA (ONHYM) PPL EBS - Cote d'Ivoire at 22-Feb-2025 21:00:00**



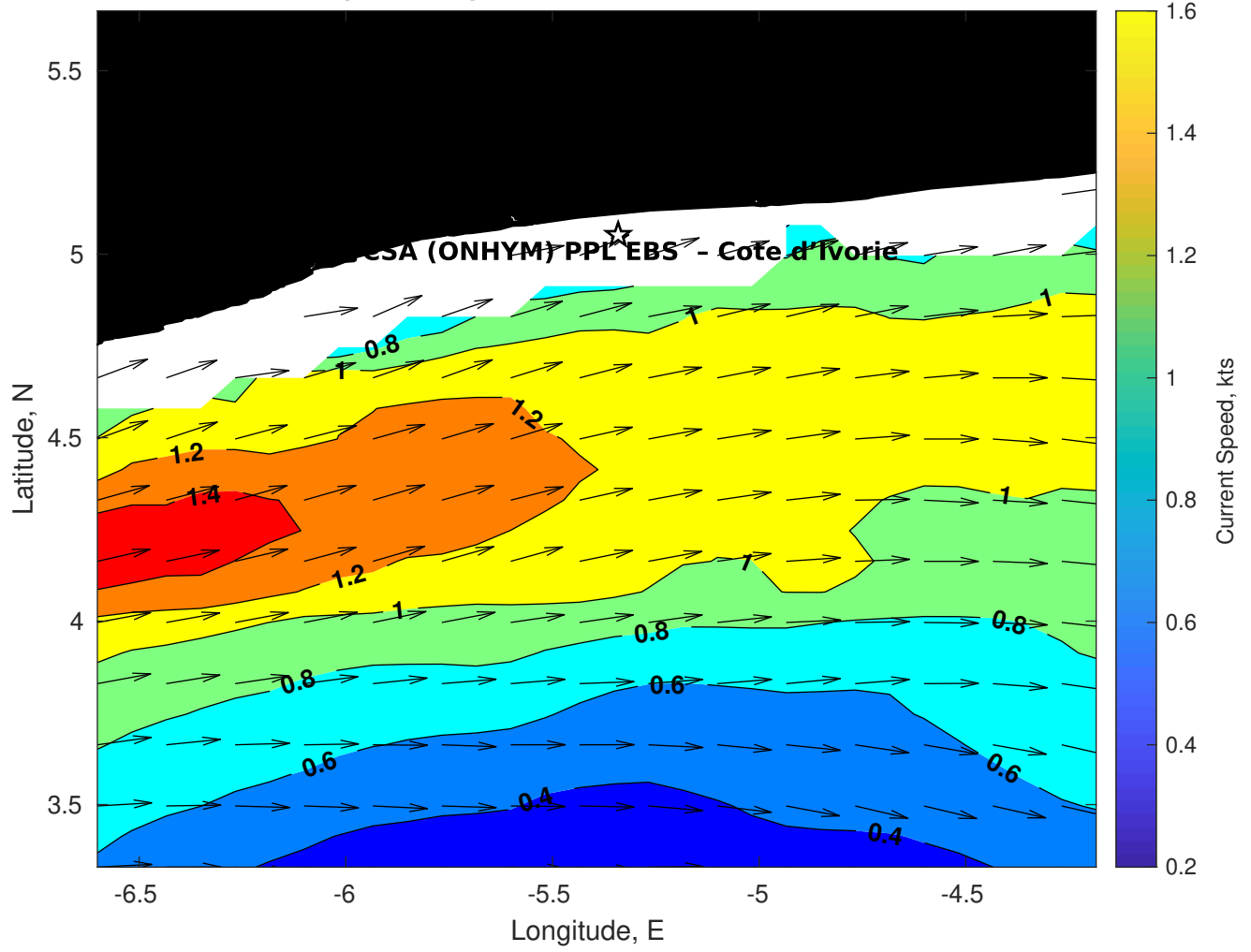
**Wave Period (sec) for CSA (ONHYM) PPL EBS - Cote d'Ivoire at 22-Feb-2025 21:00:00**



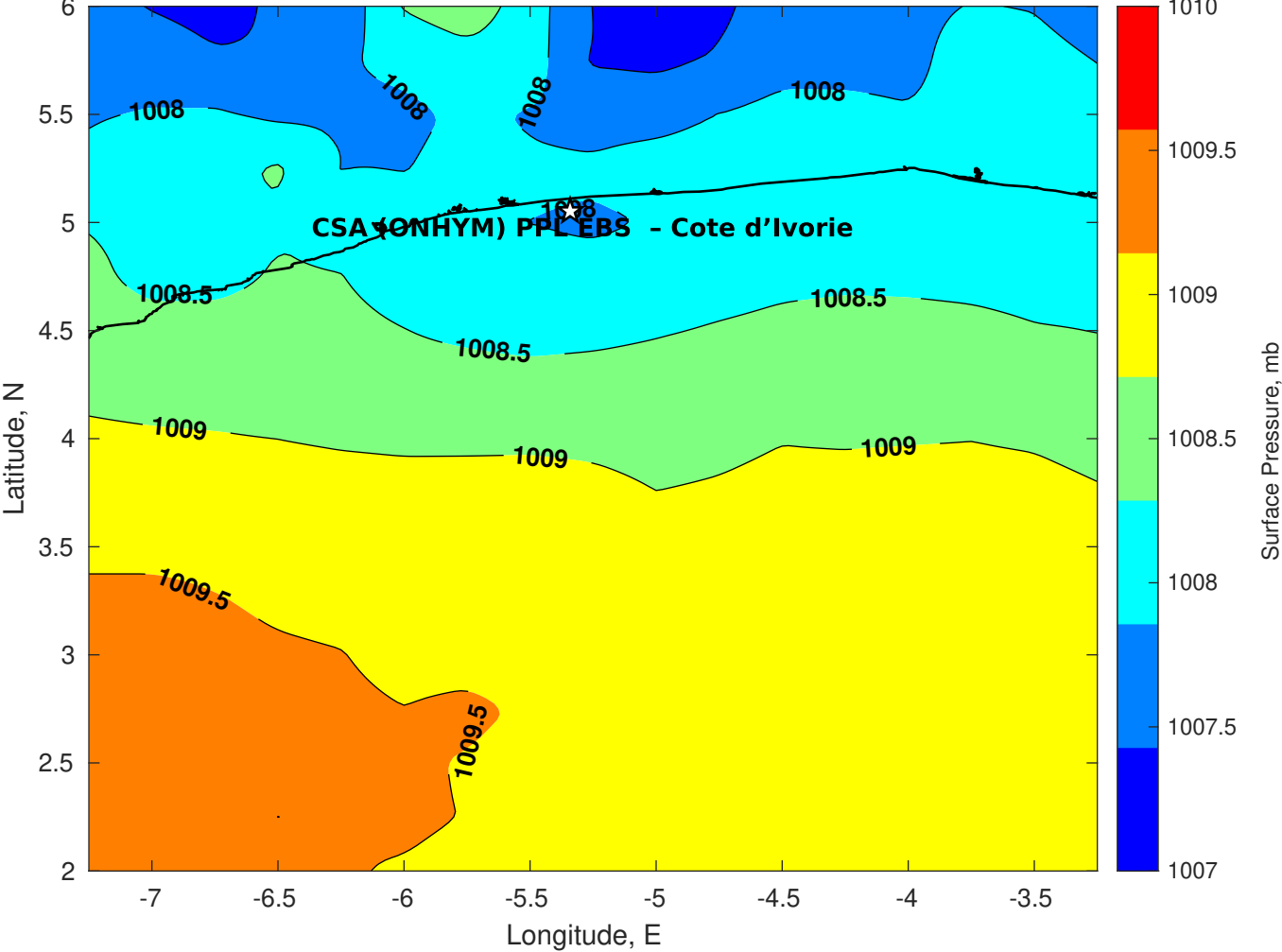
**Winds (kts) for CSA (ONHYM) PPL EBS - Cote d'Ivoire at 22-Feb-2025 21:00:00**



Surface Currents for CSA (ONHYM) PPL EBS - Cote d'Ivoire at 22-Feb-2025 00:00:00

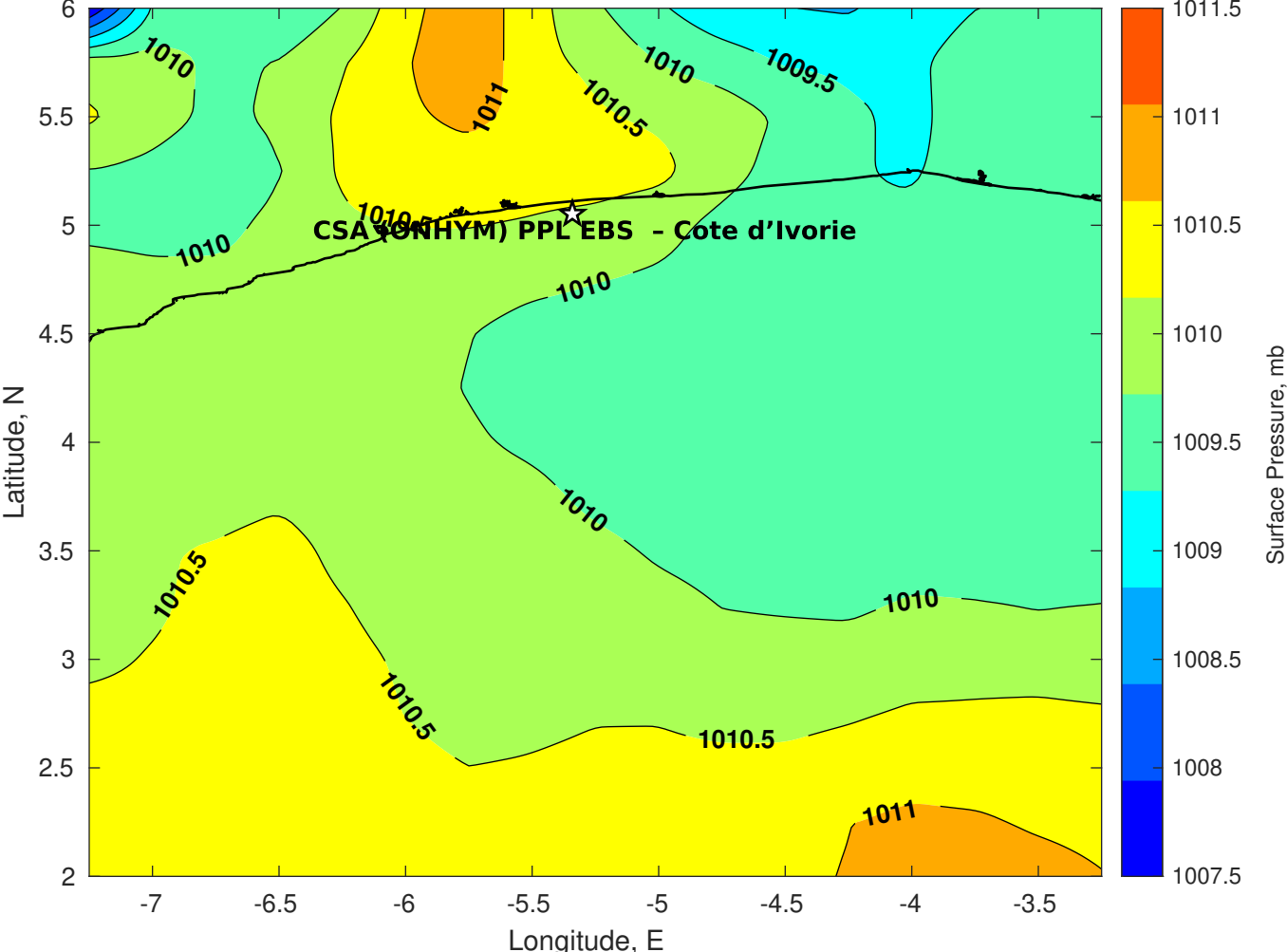


Surface Pressure (mb) for CSA (ONHYM) PPL EBS - Cote d'Ivoire at 22-Feb-2025 18:00:00

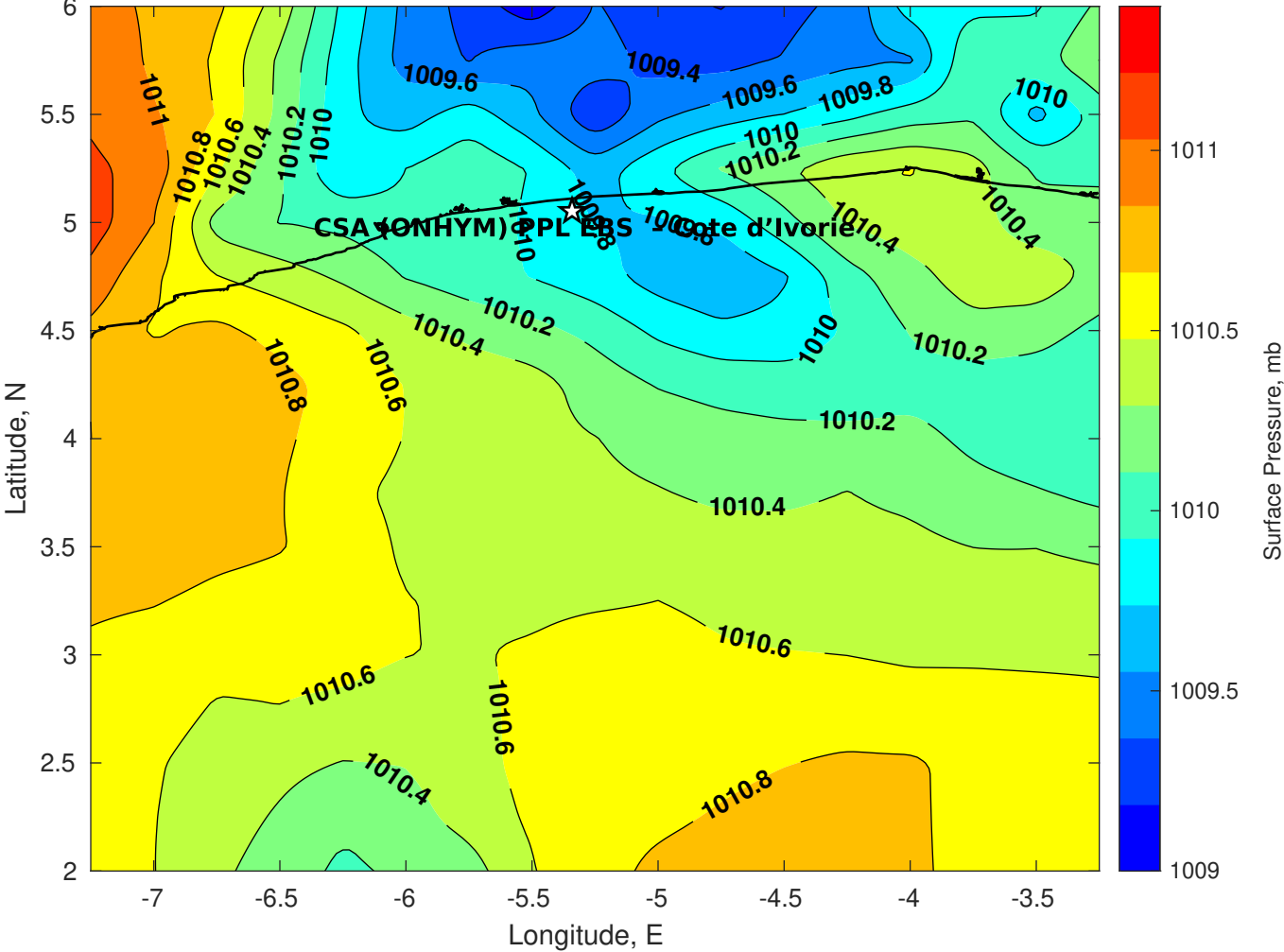




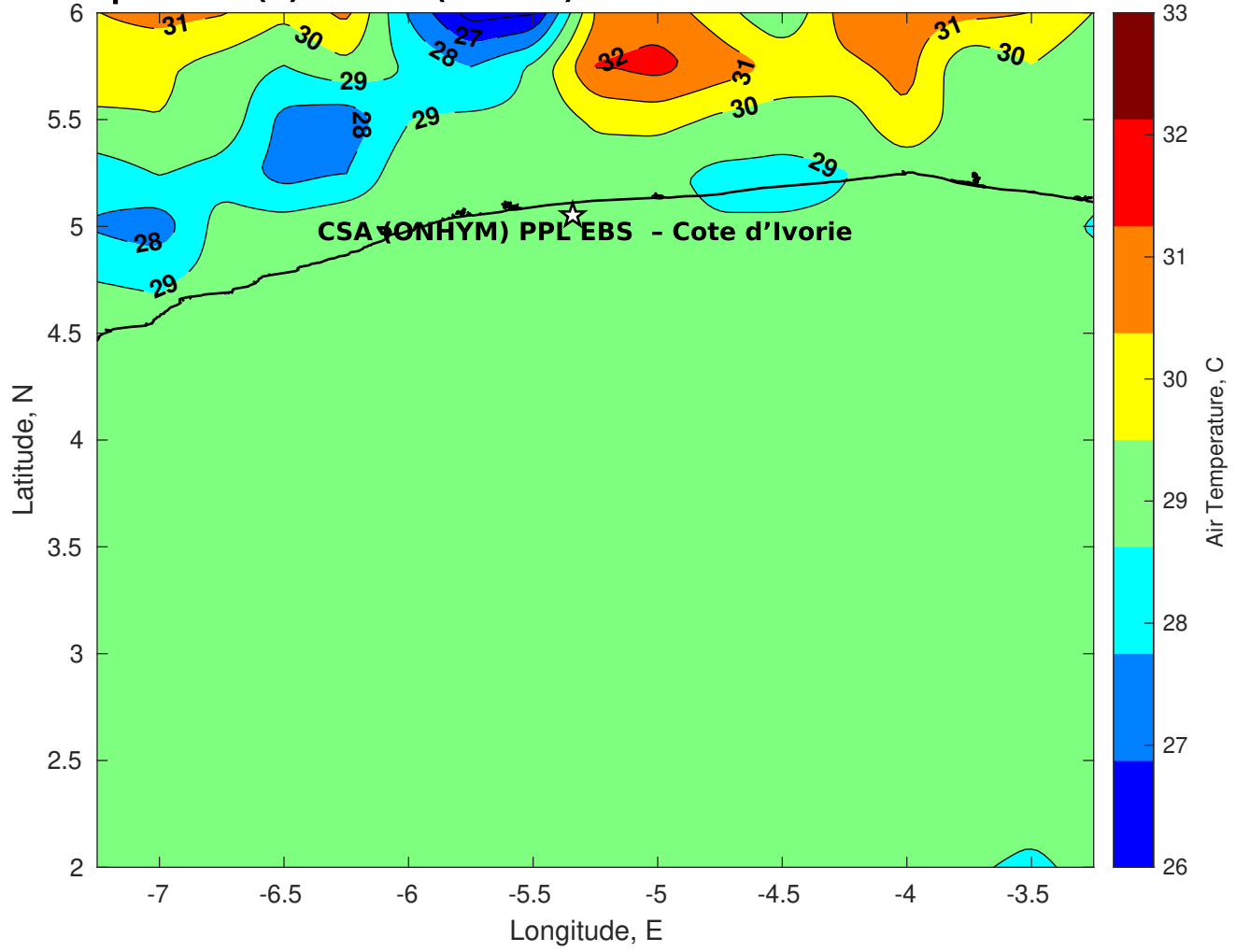
Surface Pressure (mb) for CSA (ONHYM) PPL EBS - Cote d'Ivoire at 23-Feb-2025 18:00:00



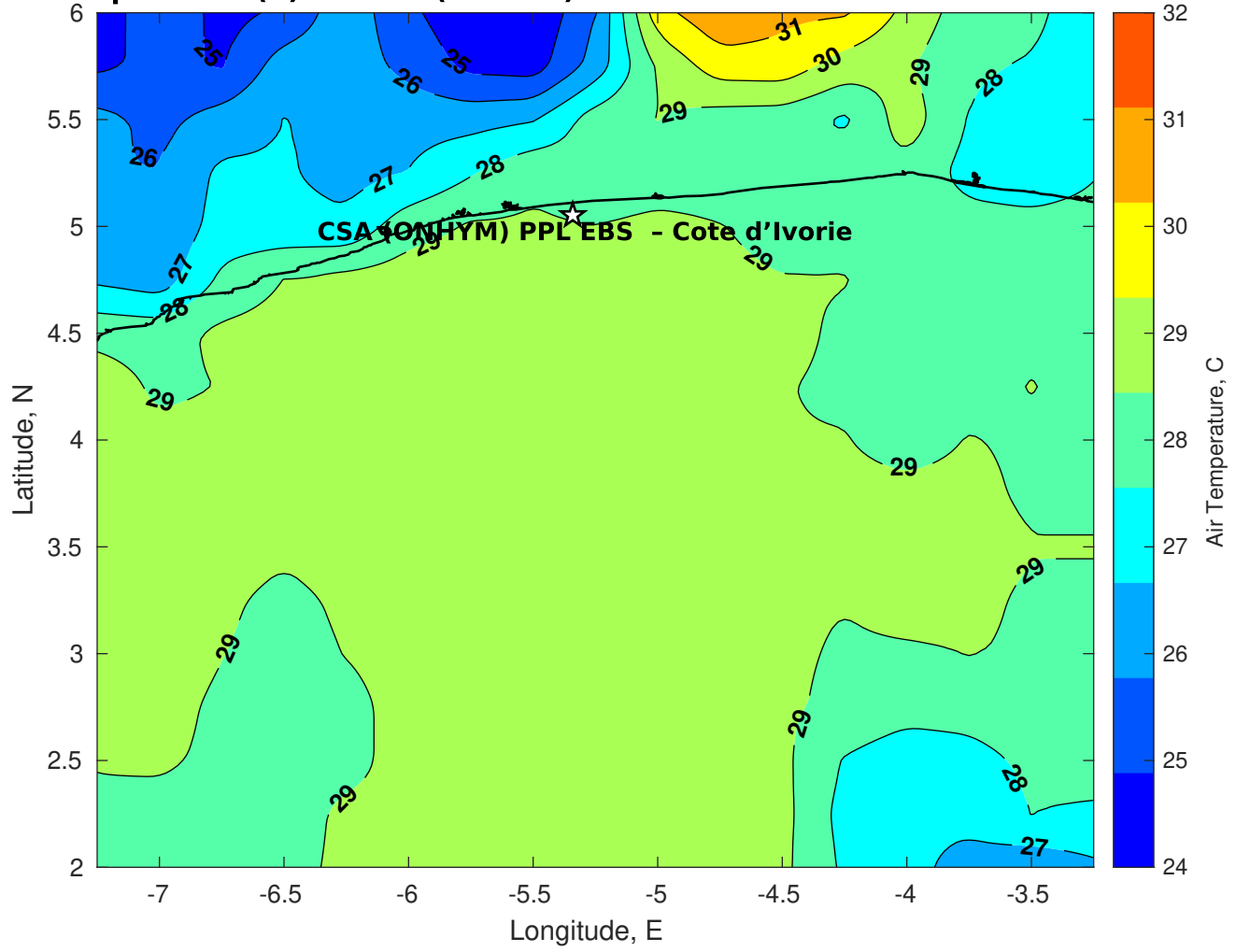
Surface Pressure (mb) for CSA (ONHYM) PPL EBS - Cote d'Ivoire at 24-Feb-2025 18:00:00



**Air Temperature (C) for CSA (ONHYM) PPL EBS - Cote d'Ivoire at 22-Feb-2025**



**Air Temperature (C) for CSA (ONHYM) PPL EBS - Cote d'Ivoire at 22-Feb-2025**



**Air Temperature (C) for CSA (ONHYM) PPL EBS - Cote d'Ivoire at 22-Feb-2025**

