
Marine Weather Forecast for Shell Noches GC19 PPL Geotechnical
Forecast valid as of 22-Feb-2025 2100 GMT

All times are local.

Today

Winds: E, 10-15 kts.
Waves: E, 2-3 feet, 5-6 sec.
Currents: W, less than 0.5 knot.

Tonight

Winds: E, 15-20 kts.
Waves: NE, 2-3 feet, 5-6 sec.
Currents: W, less than 0.5 knot.

Sunday

Winds: E, 20-25 kts.
Waves: NE, 6-7 feet, 6-7 sec.
Currents: W, less than 0.5 knot.

Sunday Night

Winds: N, 20-25 kts.
Waves: NE, 6-7 feet, 6-7 sec.
Currents: NW, less than 0.5 knot.

Monday

Winds: NE, 20-25 kts.
Waves: E, 6-7 feet, 6-7 sec.
Currents: W, 0.5-1 kts.

Monday Night

Winds: NE, 10-15 kts.
Waves: E, 3-4 feet, 6-7 sec.
Currents: W, 0.5-1 kts.

Tuesday

Winds: E, 5-10 kts.
Waves: E, 2-3 feet, 6-7 sec.
Currents: W, less than 0.5 knot.

Tuesday Night

Winds: NE, less than 5 kts.
Waves: E, 2-3 feet, 6-7 sec.
Currents: W, less than 0.5 knot.

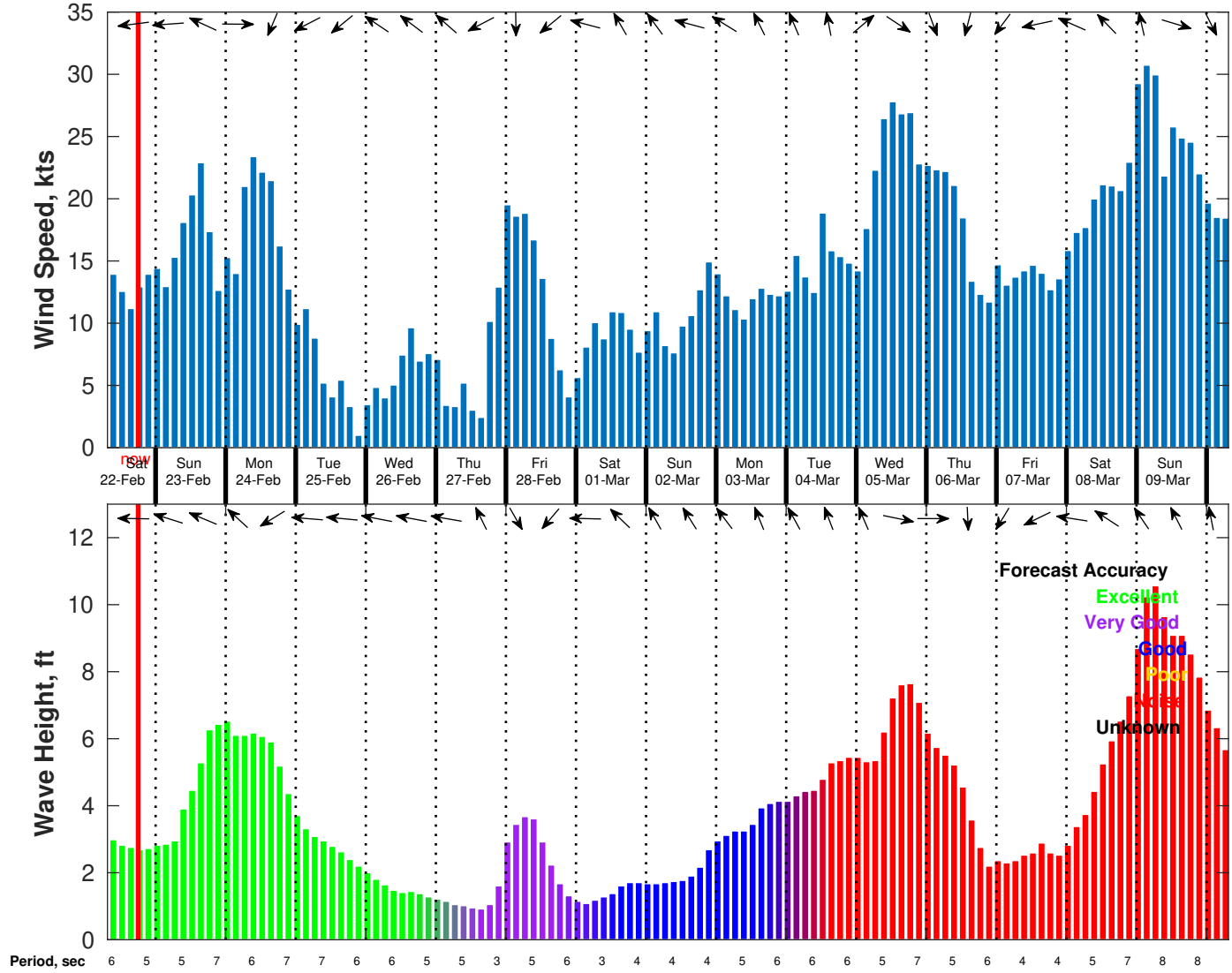
Wednesday

Winds: NE, 5-10 kts.
Waves: E, 1-2 feet, 5-6 sec.
Currents: W, less than 0.5 knot.

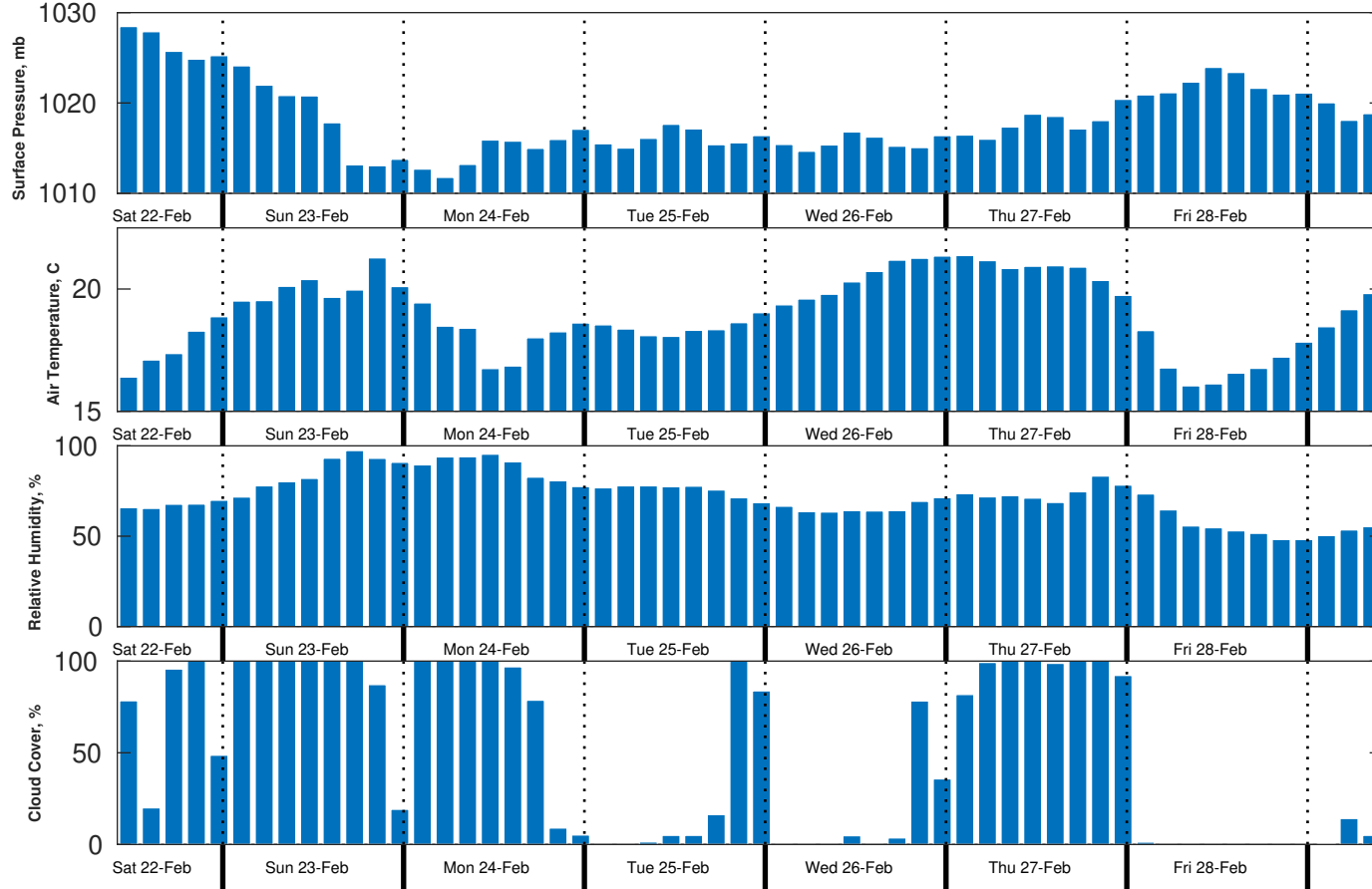
Wednesday Night

Winds: NE, 5-10 kts.
Waves: E, 1-2 feet, 5-6 sec.
Currents: NW, less than 0.5 knot.

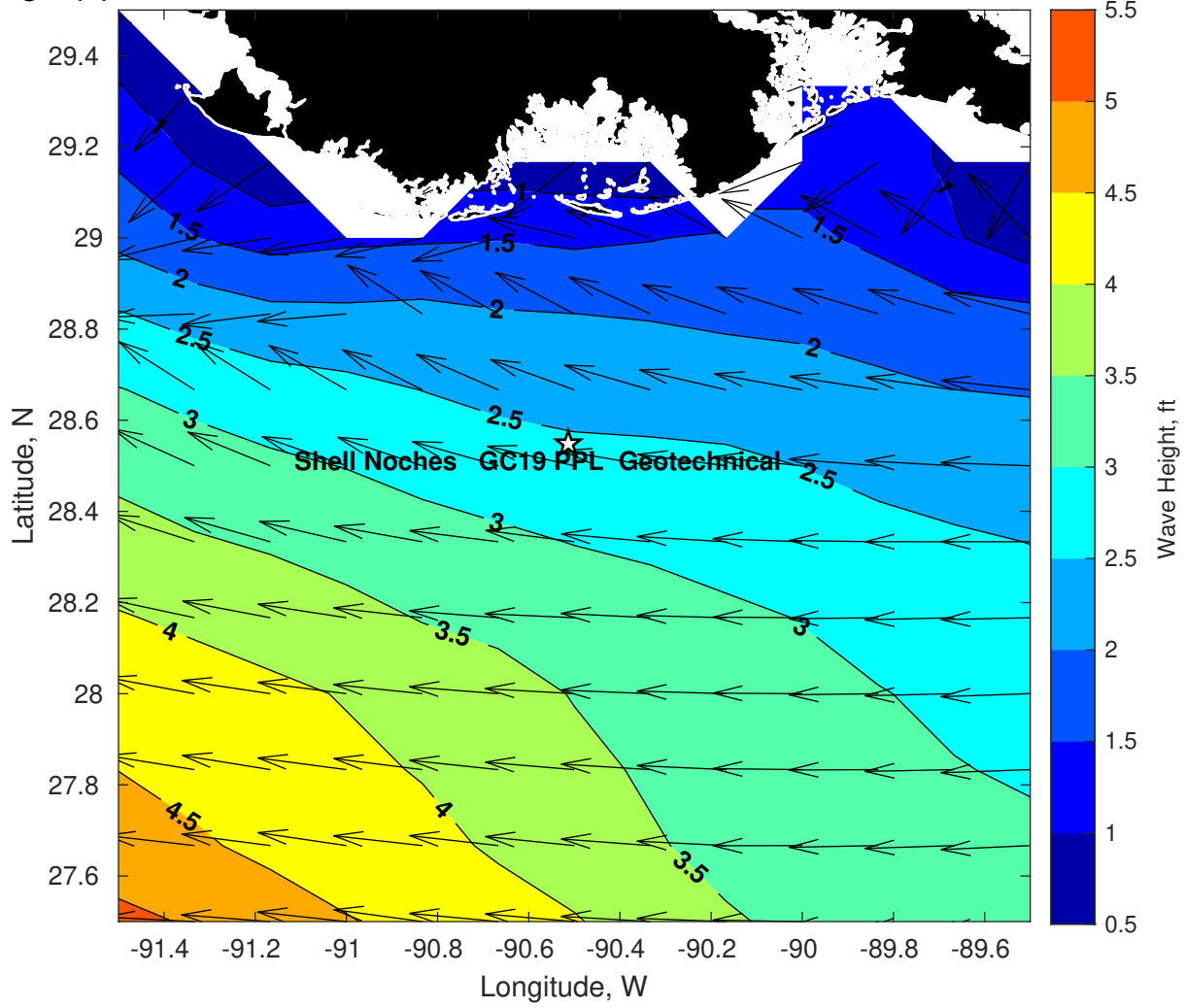
Wind & Wave Forecast for Shell Noches GC19 PPL Geotechnical from 22-Feb-2025 08:00:00 to 10-Mar-2025 08:00:00



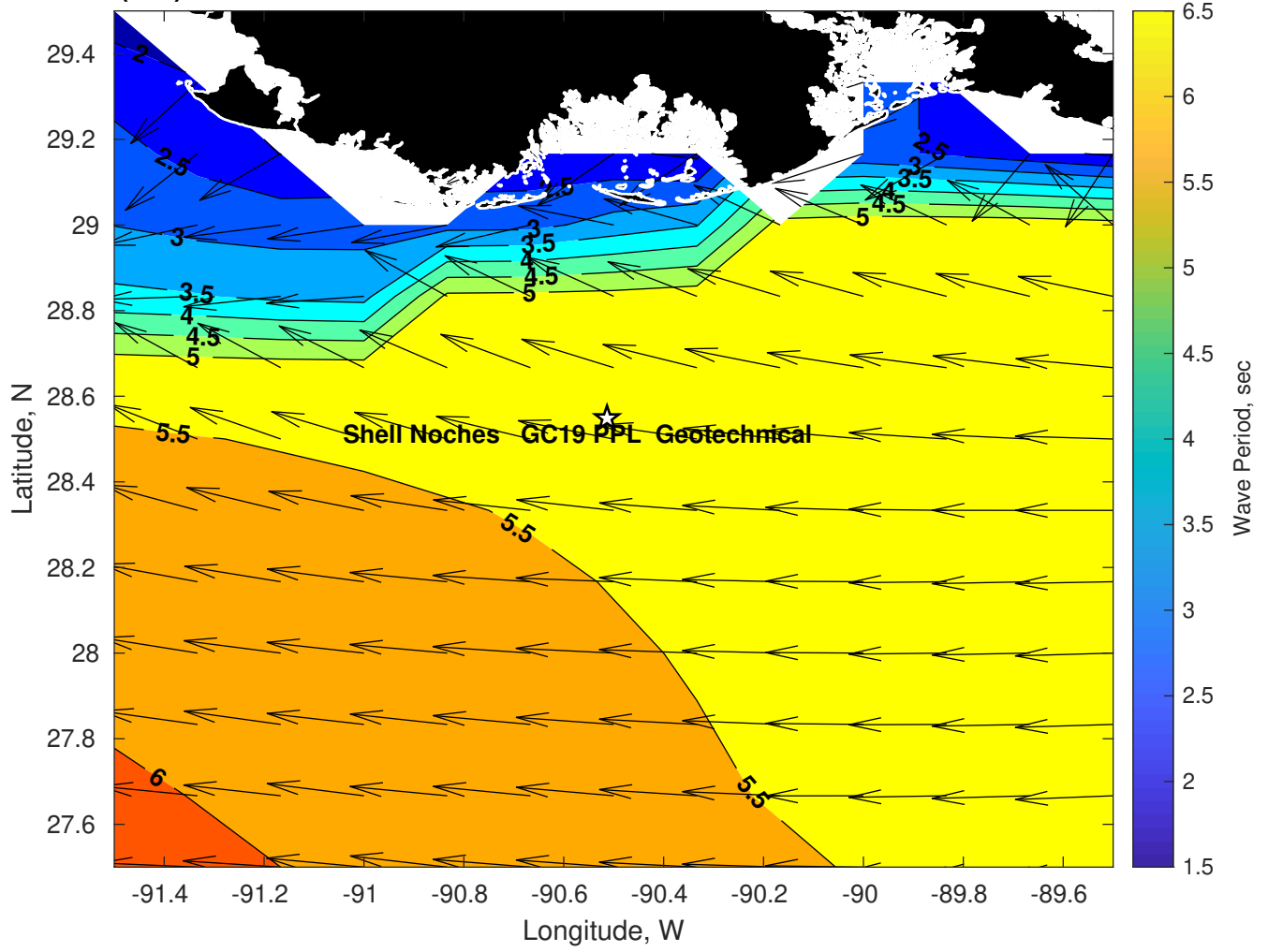
Met Forecast for Shell Noches GC19 PPL Geotechnical from 22-Feb-2025 12:00:00 to 01-Mar-2025 12:00:00



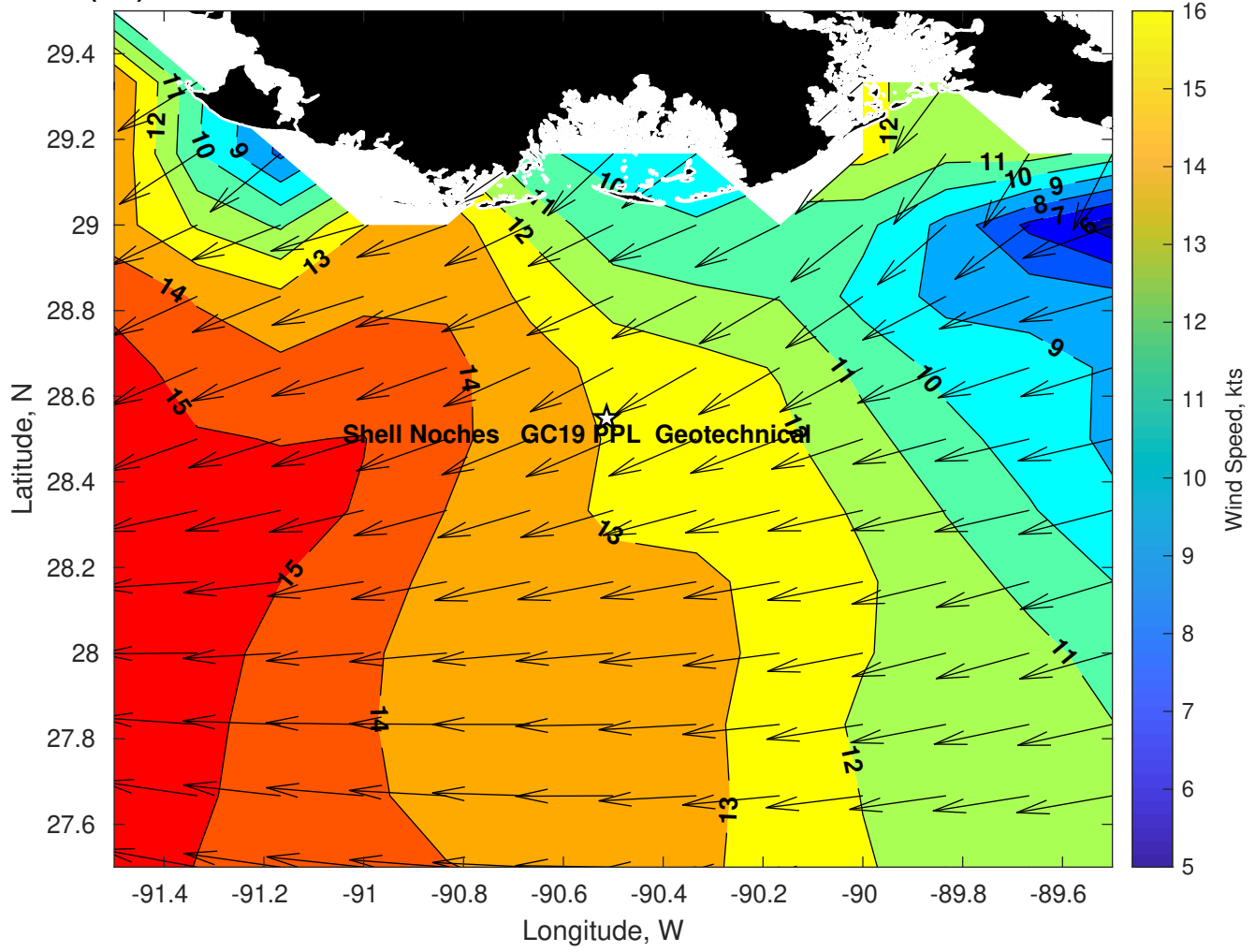
Wave Height (ft) for Shell Noches GC19 PPL Geotechnical at 22-Feb-2025 21:00:00



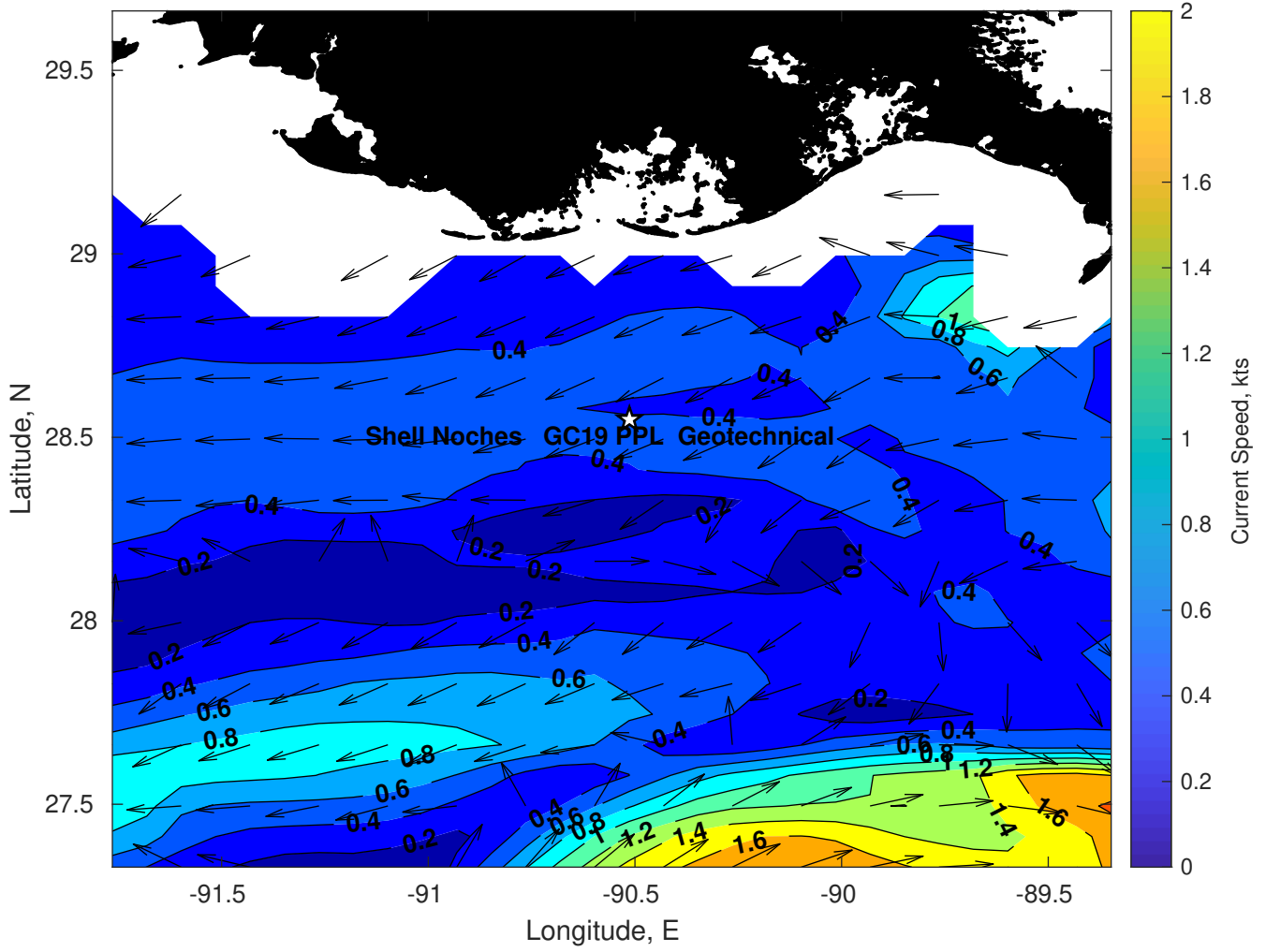
Wave Period (sec) for Shell Noches GC19 PPL Geotechnical at 22-Feb-2025 21:00:00



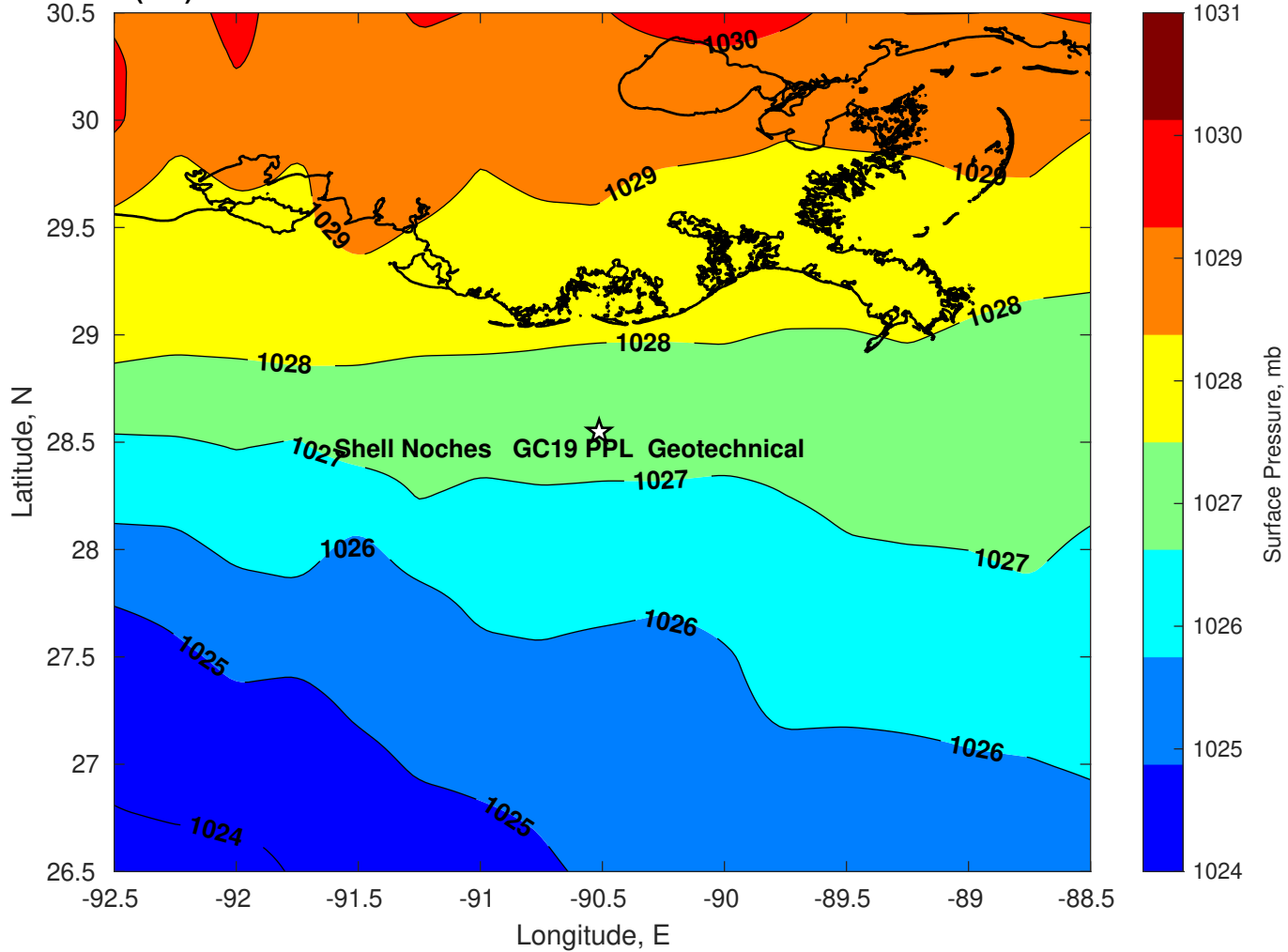
Winds (kts) for Shell Noches GC19 PPL Geotechnical at 22-Feb-2025 21:00:00



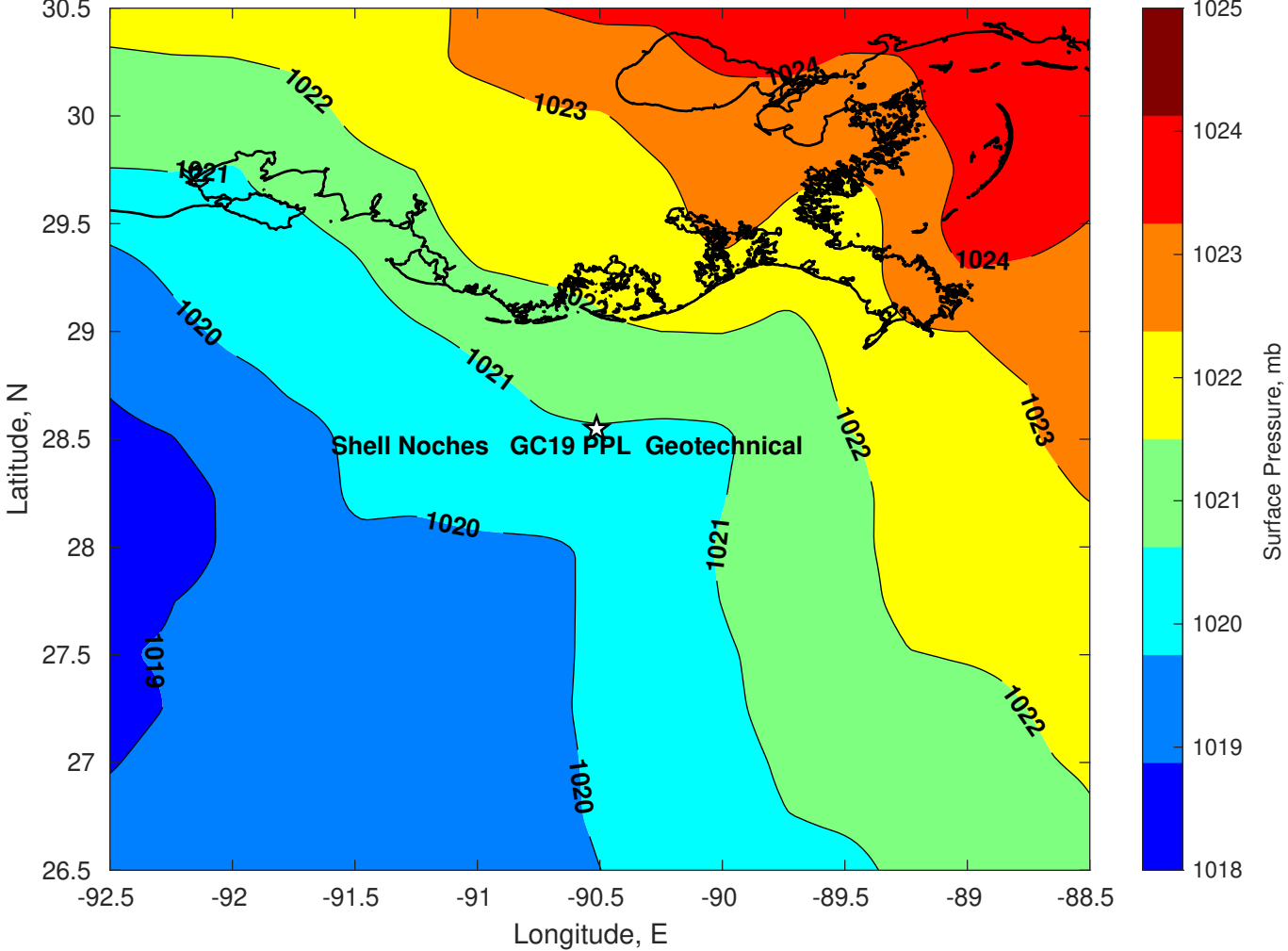
Surface Currents for Shell Noches GC19 PPL Geotechnical at 22-Feb-2025 00:00:00



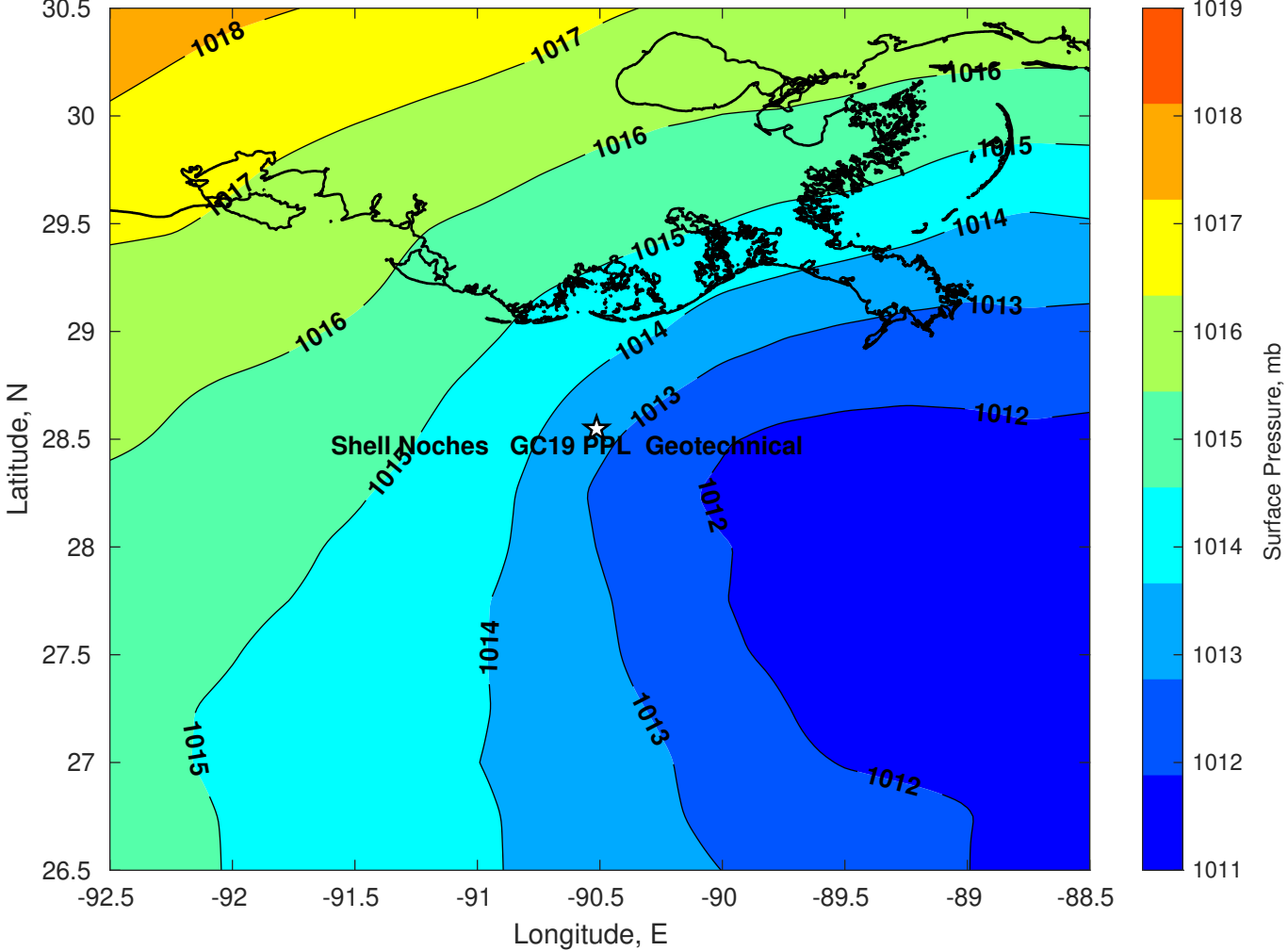
Surface Pressure (mb) for Shell Noches GC19 PPL Geotechnical at 22-Feb-2025 12:00:00



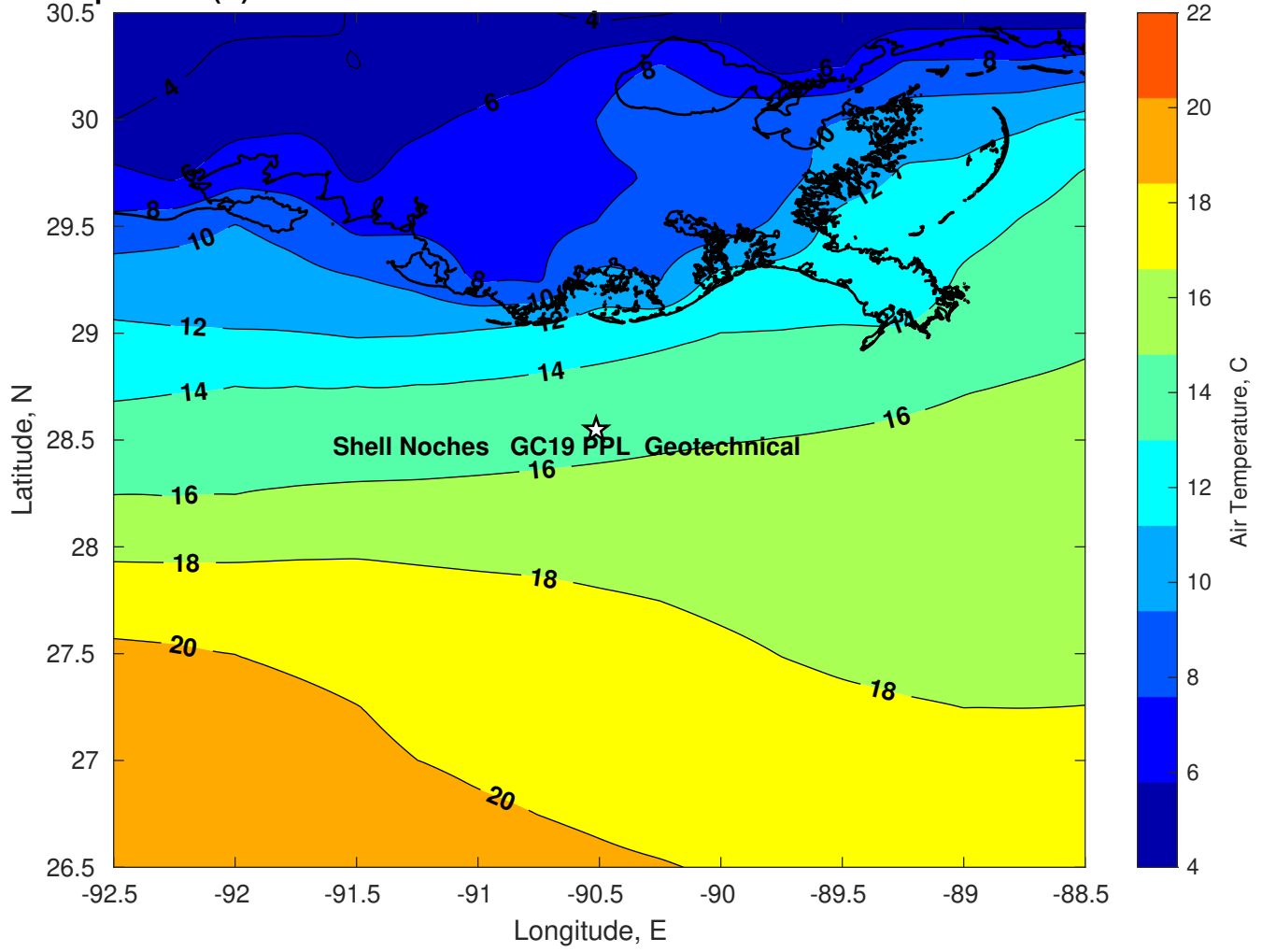
Surface Pressure (mb) for Shell Noches GC19 PPL Geotechnical at 23-Feb-2025 12:00:00



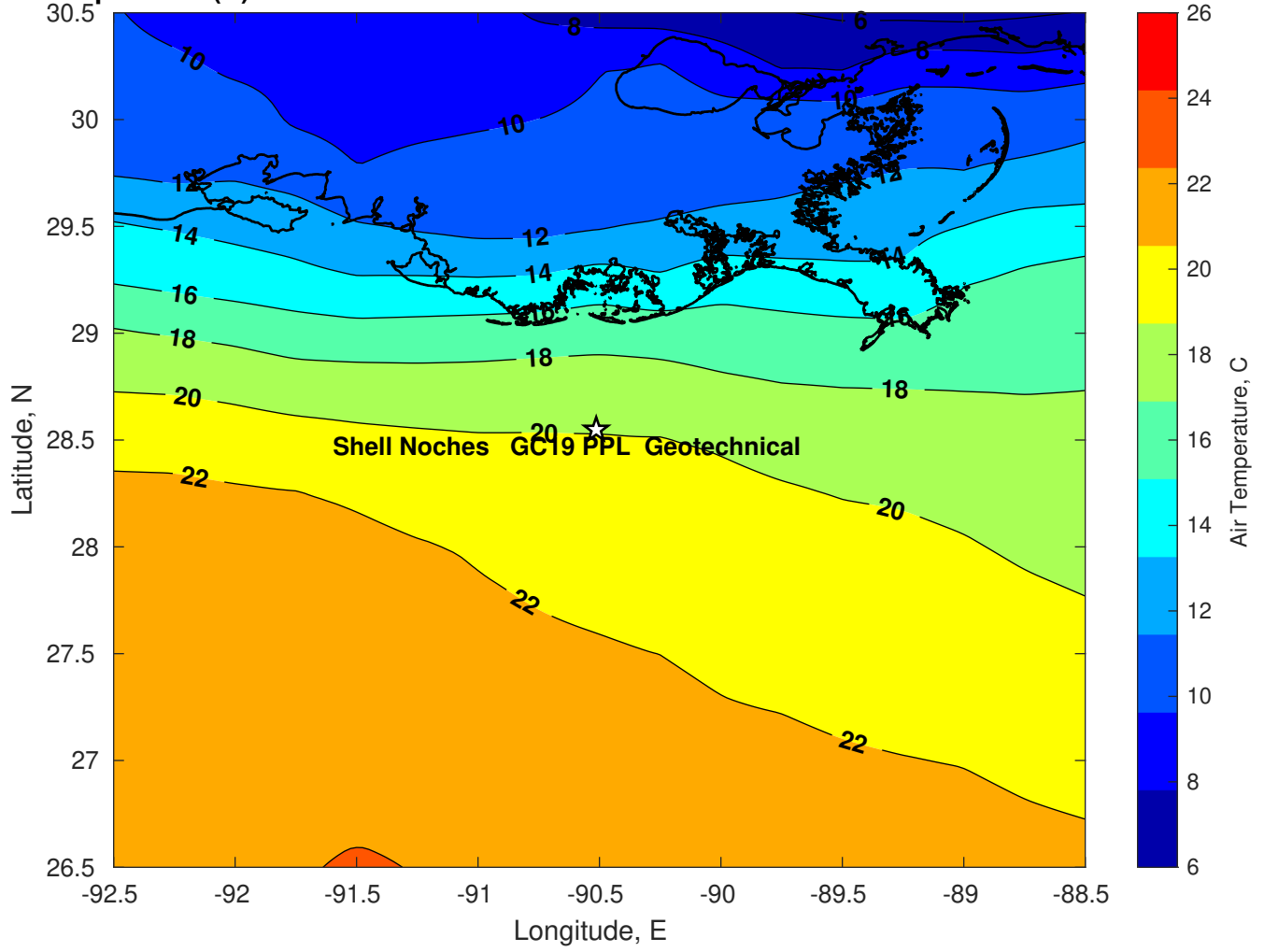
Surface Pressure (mb) for Shell Noches GC19 PPL Geotechnical at 24-Feb-2025 12:00:00



Air Temperature (C) for Shell Noches GC19 PPL Geotechnical at 22-Feb-2025



Air Temperature (C) for Shell Noches GC19 PPL Geotechnical at 22-Feb-2025



Air Temperature (C) for Shell Noches GC19 PPL Geotechnical at 22-Feb-2025

