

\*\*\*\*\*

Marine Weather Forecast for Tampnet P2378 South Texas Cable Route Geophysical  
Forecast valid as of 22-Feb-2025 2100 GMT

\*\*\*\*\*

All times are local.

Today

Winds: N, 20-25 kts.  
Waves: NE, 7-8 feet, 7-8 sec.  
Currents: S, 1-1.5 kts.

Tonight

Winds: N, 20-25 kts.  
Waves: NE, 6-7 feet, 7-8 sec.  
Currents: S, 1-1.5 kts.

Sunday

Winds: N, 15-20 kts.  
Waves: NE, 6-7 feet, 7-8 sec.  
Currents: S, 0.5-1 kts.

Sunday Night

Winds: NE, 10-15 kts.  
Waves: E, 3-4 feet, 6-7 sec.  
Currents: S, less than 0.5 knot.

Monday

Winds: E, 5-10 kts.  
Waves: E, 2-3 feet, 6-7 sec.  
Currents: NW, less than 0.5 knot.

Monday Night

Winds: NE, 10-15 kts.  
Waves: E, 2-3 feet, 6-7 sec.  
Currents: N, less than 0.5 knot.

Tuesday

Winds: NE, 10-15 kts.  
Waves: E, 2-3 feet, 6-7 sec.  
Currents: N, less than 0.5 knot.

Tuesday Night

Winds: NE, 15-20 kts.  
Waves: NE, 3-4 feet, 4-5 sec.  
Currents: N, less than 0.5 knot.

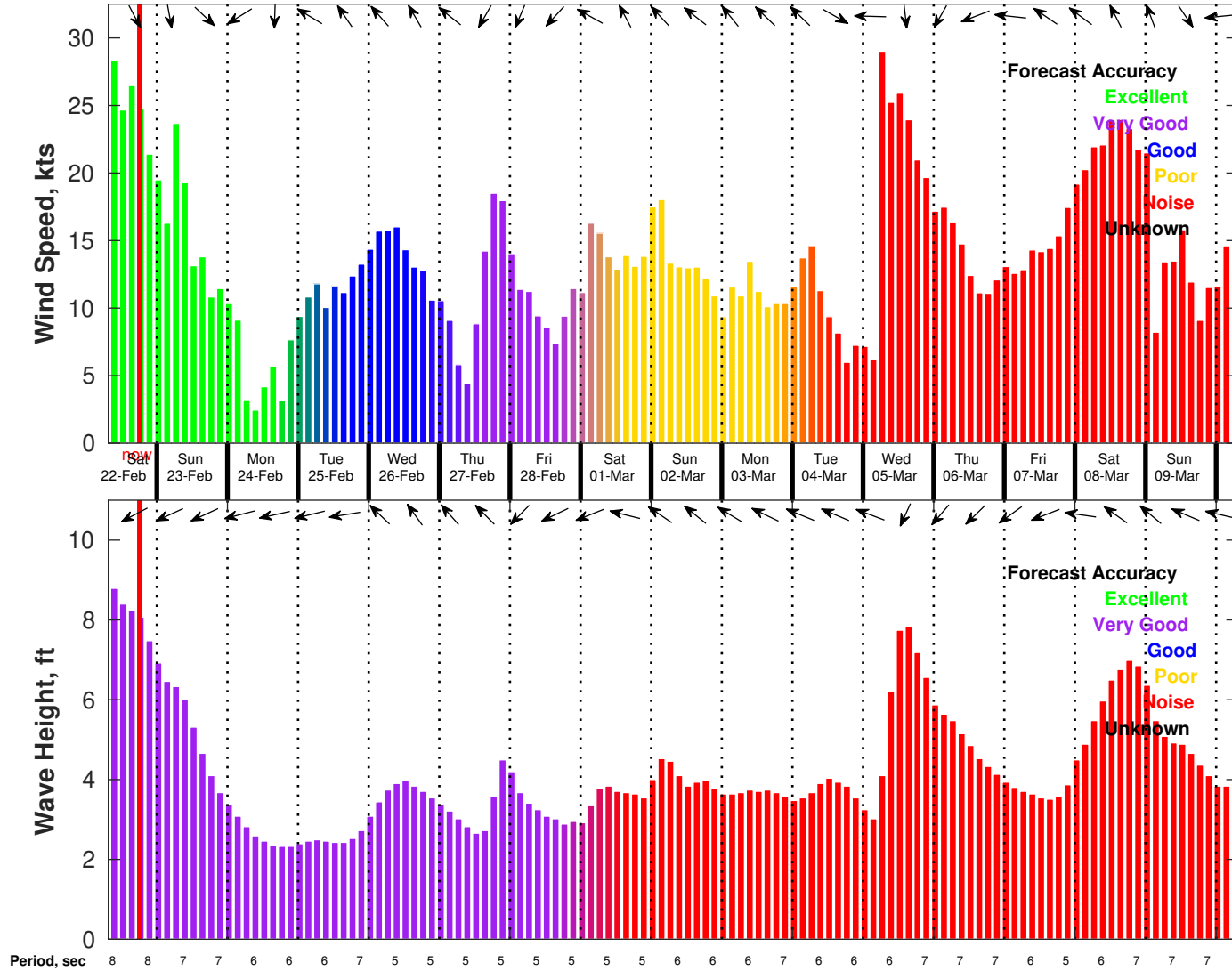
Wednesday

Winds: NE, 15-20 kts.  
Waves: NE, 3-4 feet, 5-6 sec.  
Currents: N, less than 0.5 knot.

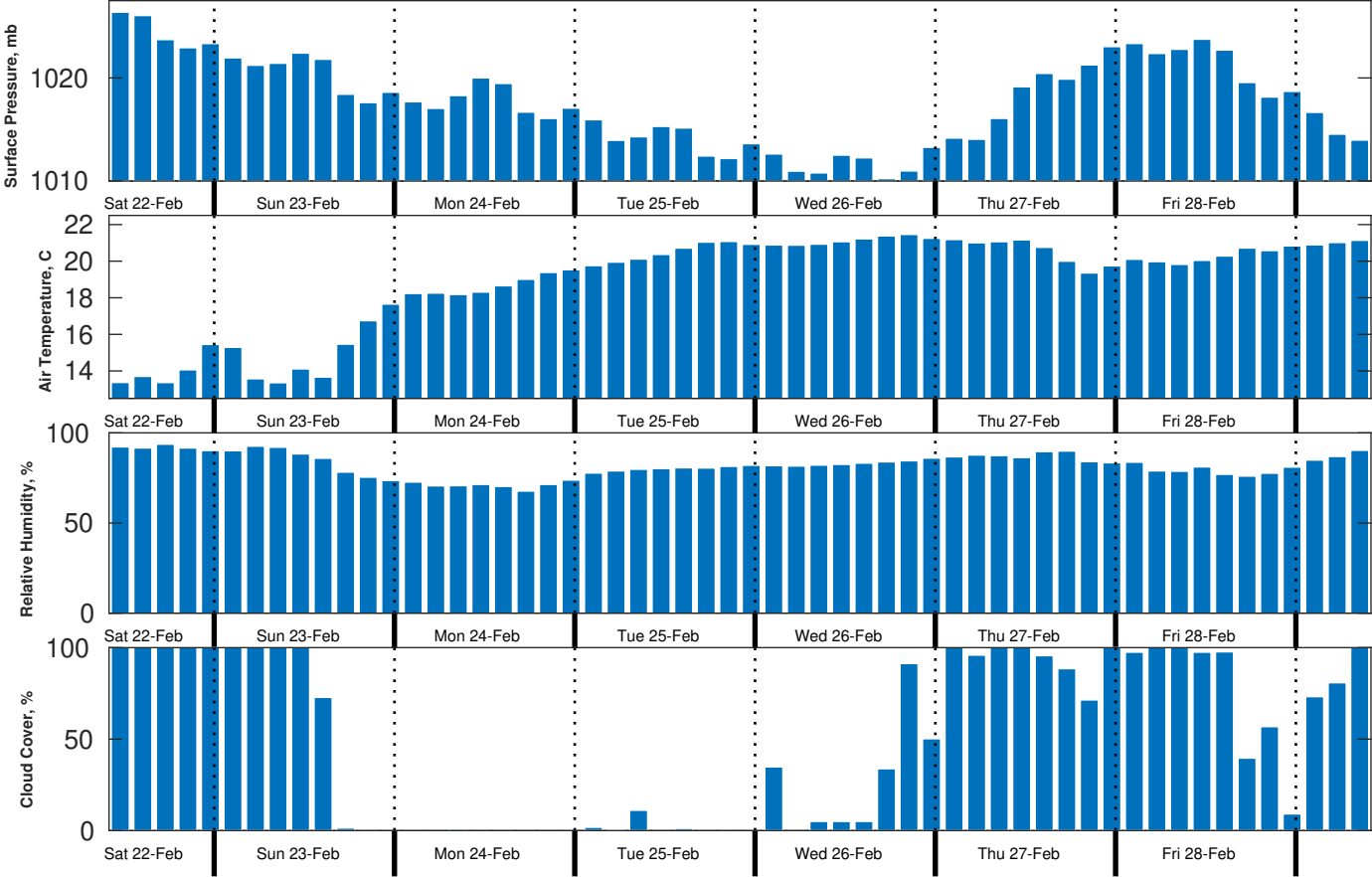
Wednesday Night

Winds: NE, 10-15 kts.  
Waves: NE, 3-4 feet, 5-6 sec.  
Currents: NE, less than 0.5 knot.

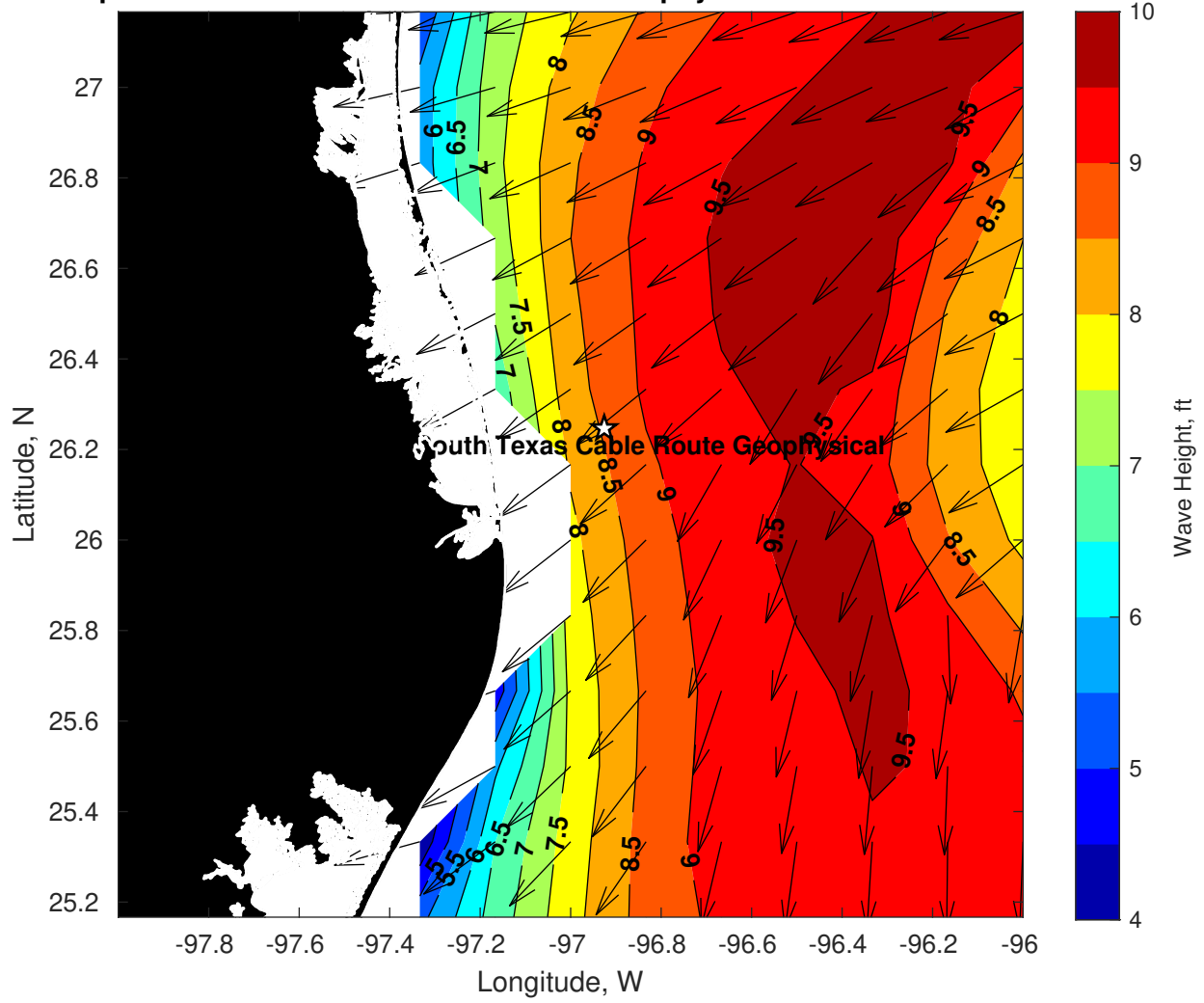
Wind & Wave Forecast for Tampnet P2378 South Texas Cable Route Geophysical from 22-Feb-2025 08:00:00 to 10-Mar-2025 08:00:00



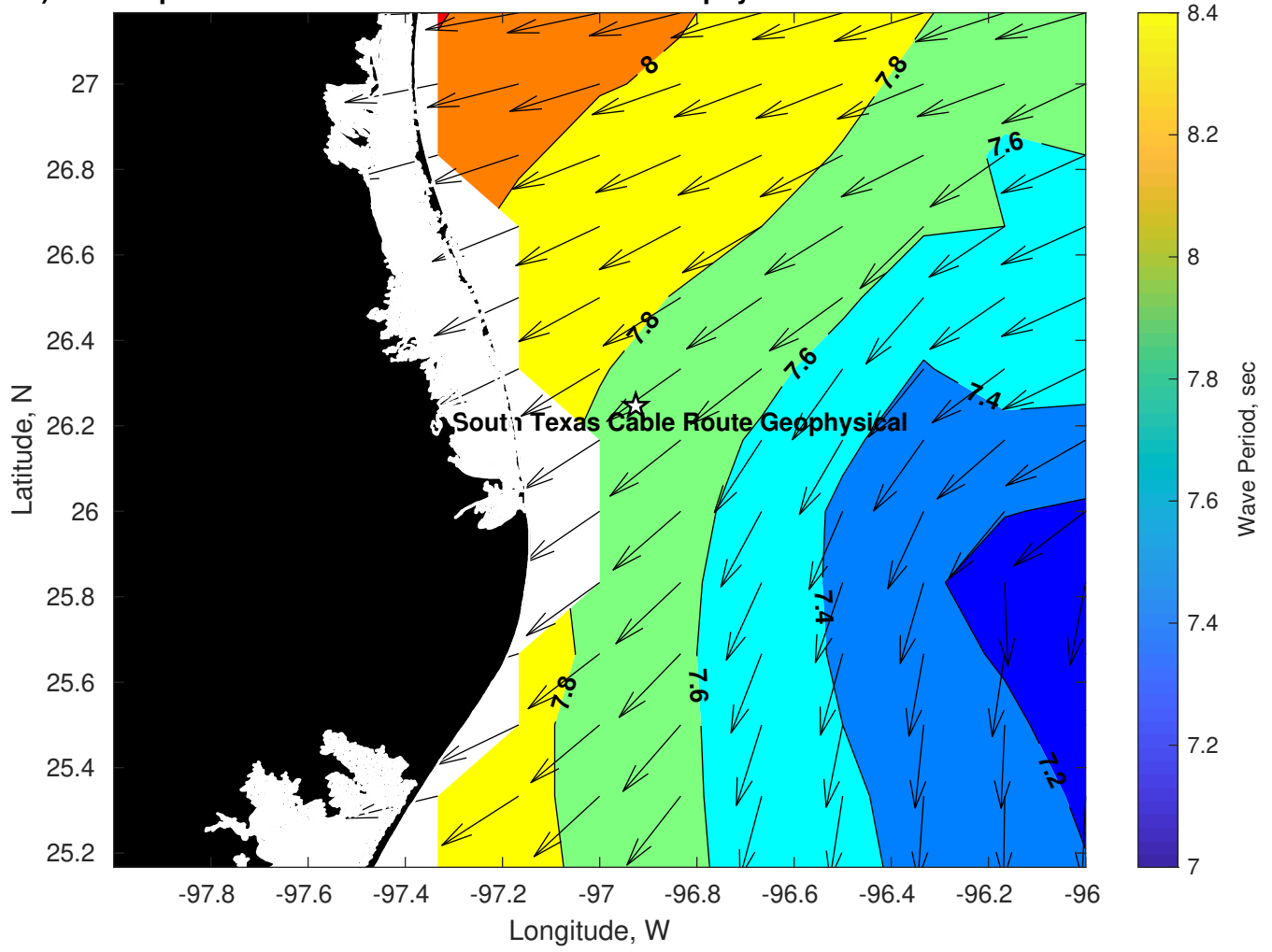
**Met Forecast for Tampnet P2378 South Texas Cable Route Geophysical from 22-Feb-2025 12:00:00 to 01-Mar-2025 12:00:00**



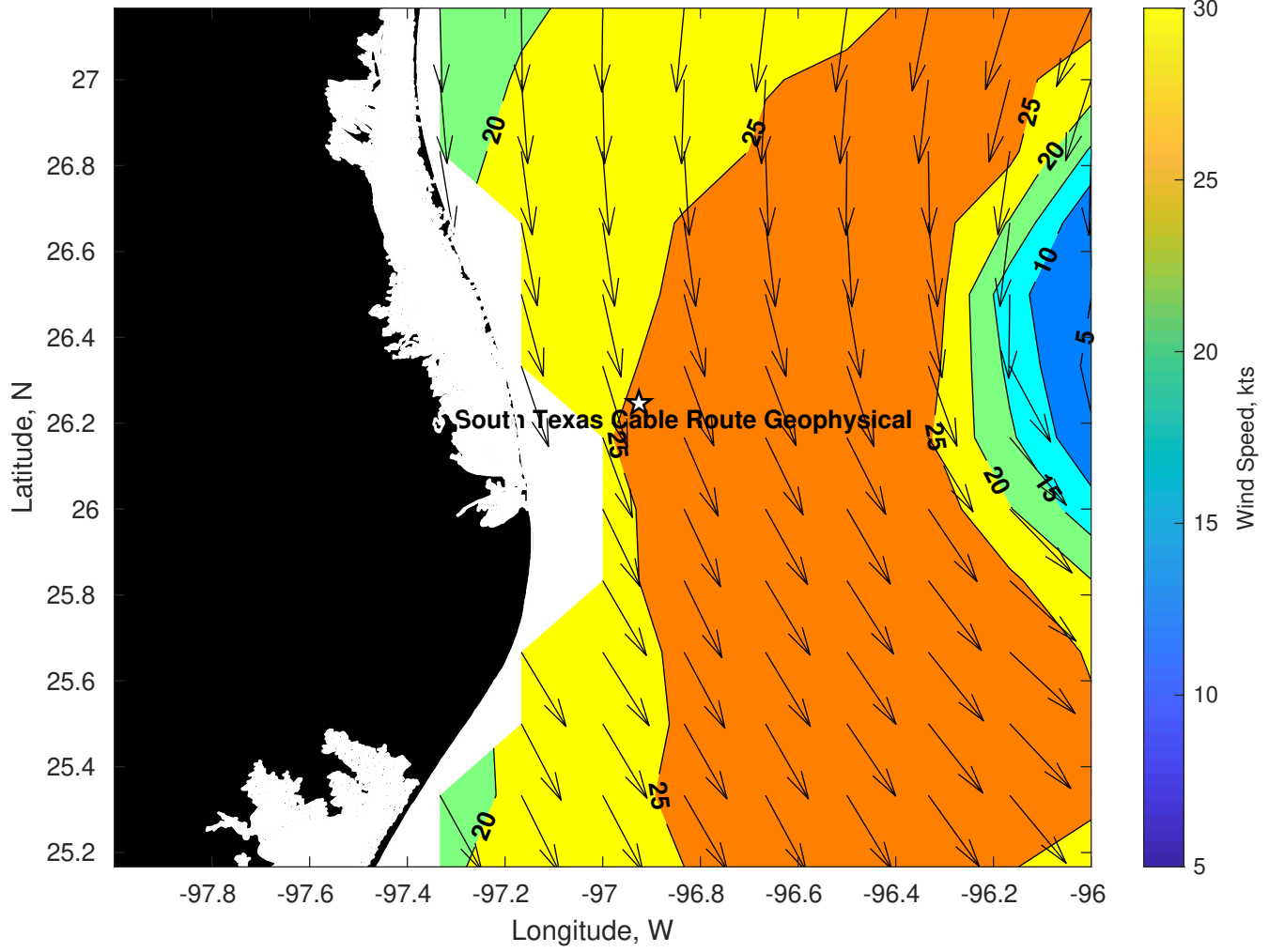
Wave Height (ft) for Tampnet P2378 South Texas Cable Route Geophysical at 22-Feb-2025 21:00:00



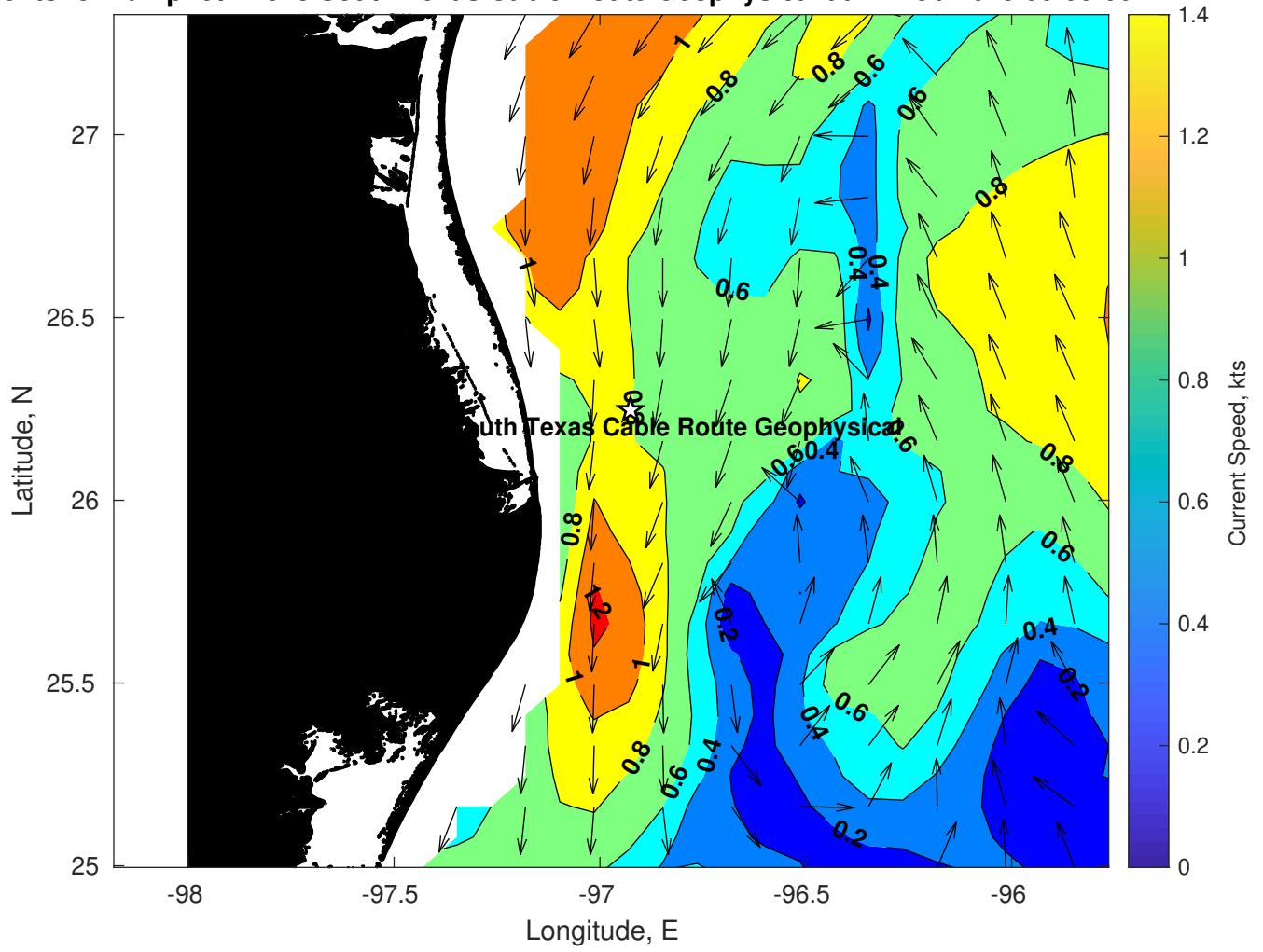
Period (sec) for Tampnet P2378 South Texas Cable Route Geophysical at 22-Feb-2025 21:00:00



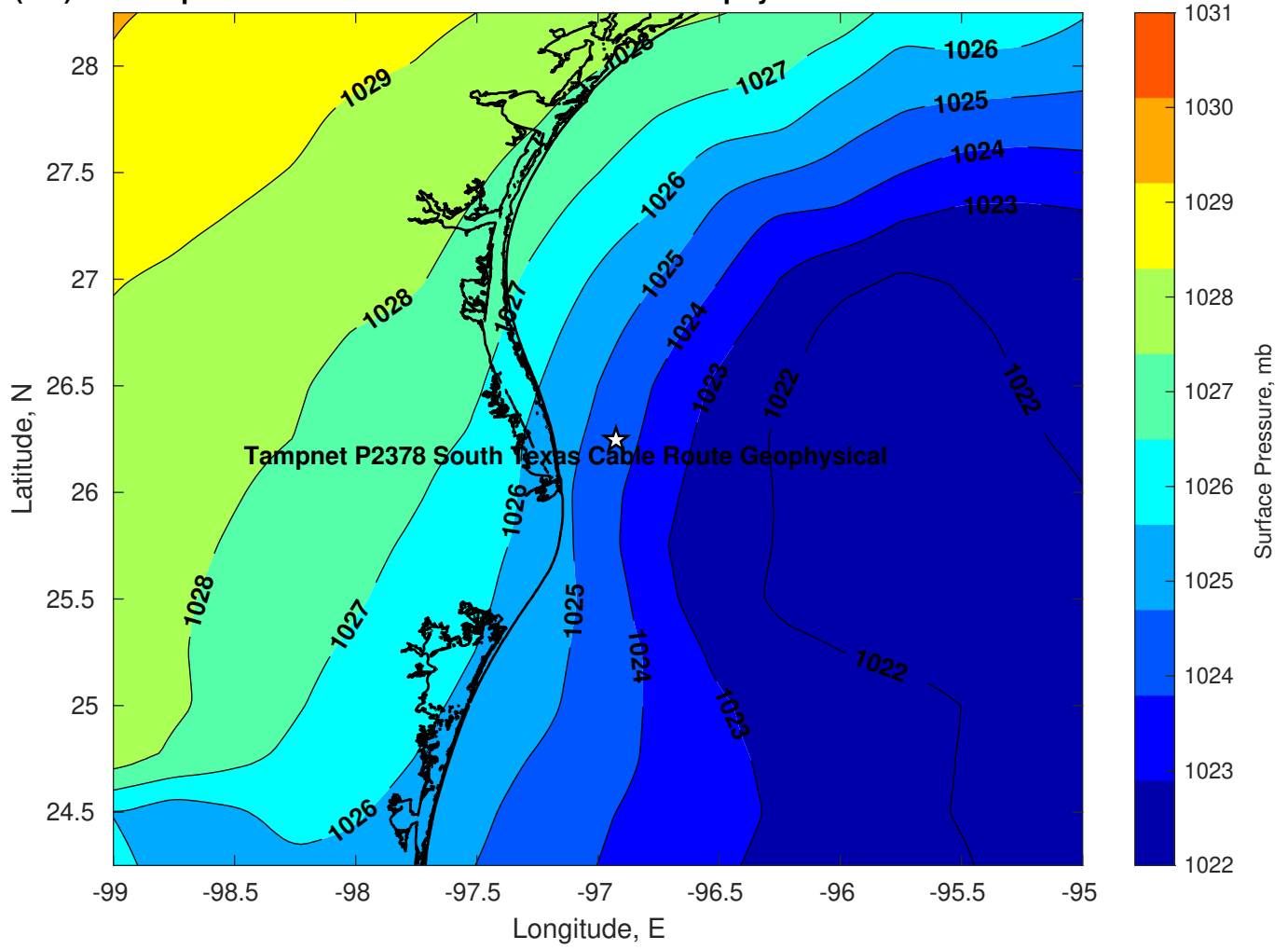
Winds (kts) for Tampnet P2378 South Texas Cable Route Geophysical at 22-Feb-2025 21:00:00



Surface Currents for Tampnet P2378 South Texas Cable Route Geophysical at 22-Feb-2025 00:00:00

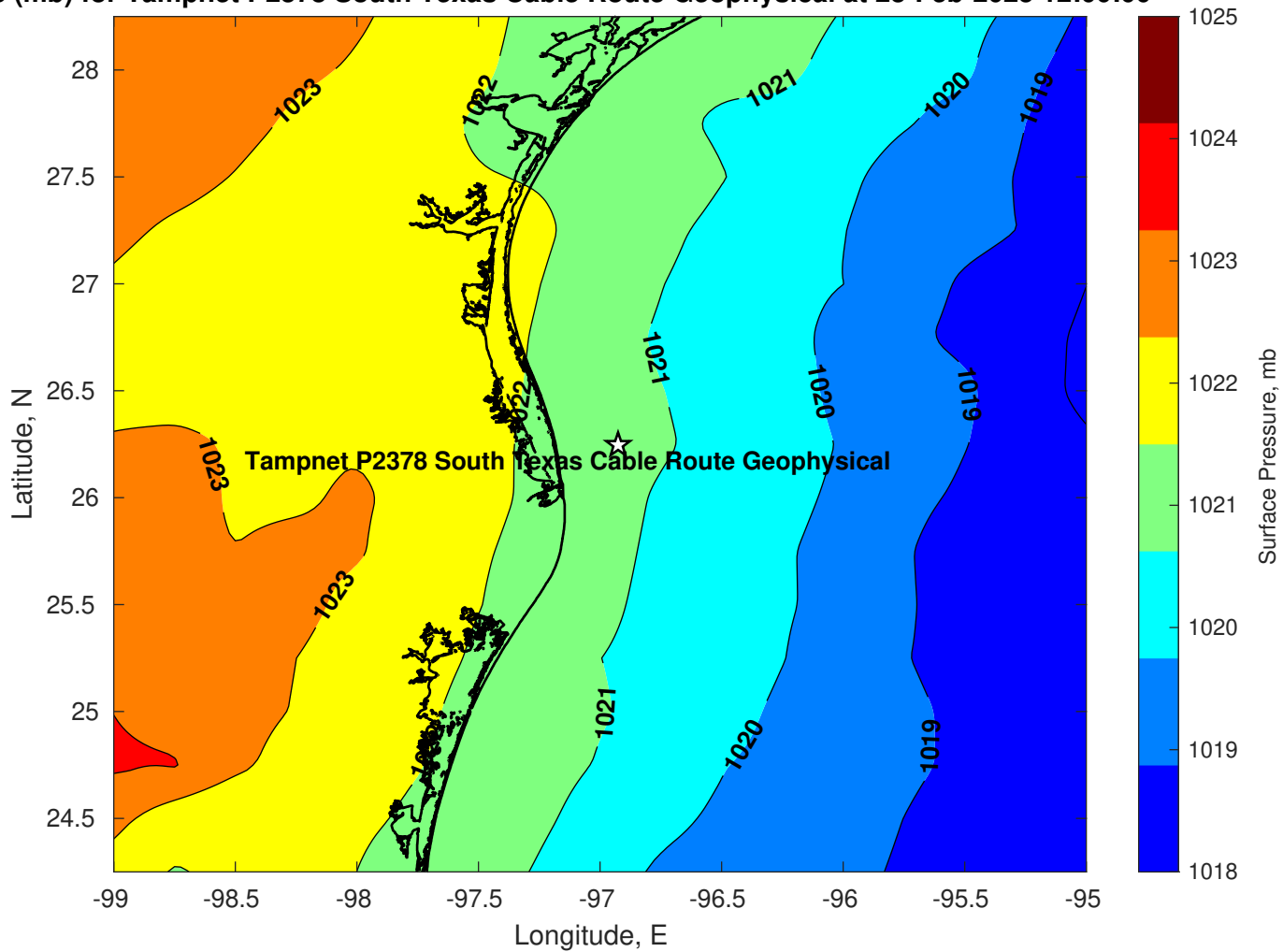


Pressure (mb) for Tampnet P2378 South Texas Cable Route Geophysical at 22-Feb-2025 12:00:00

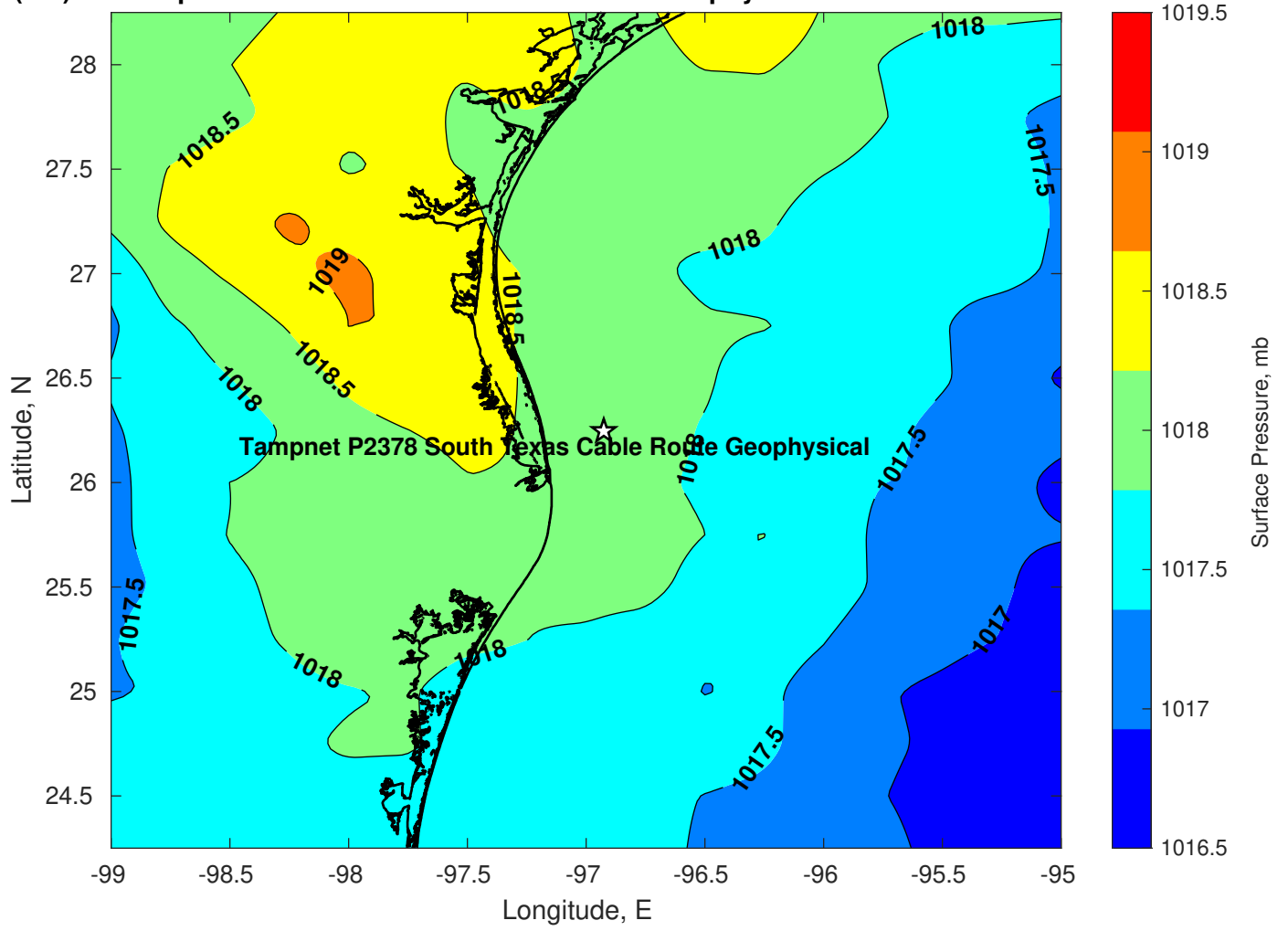




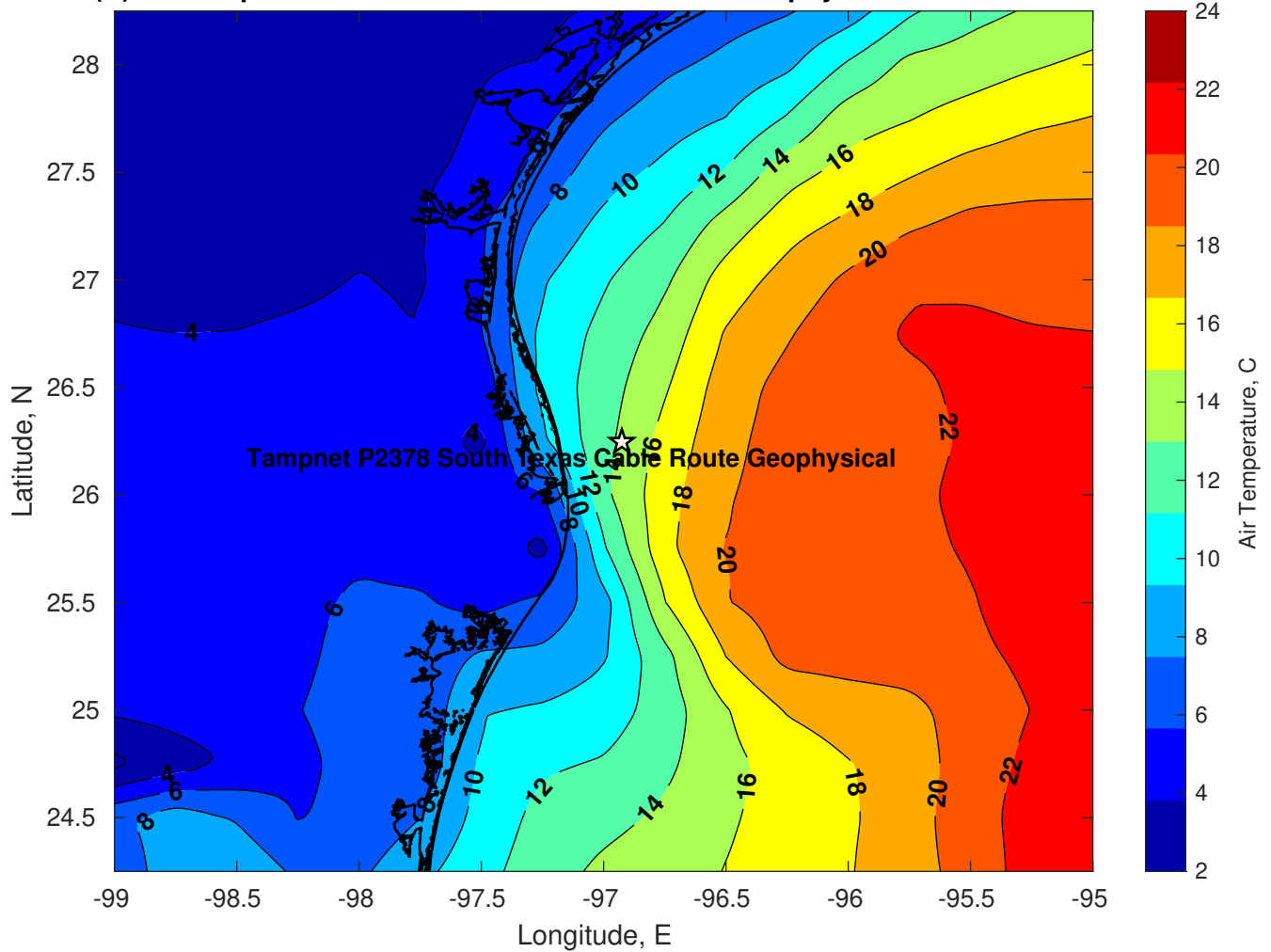
Pressure (mb) for Tampnet P2378 South Texas Cable Route Geophysical at 23-Feb-2025 12:00:00



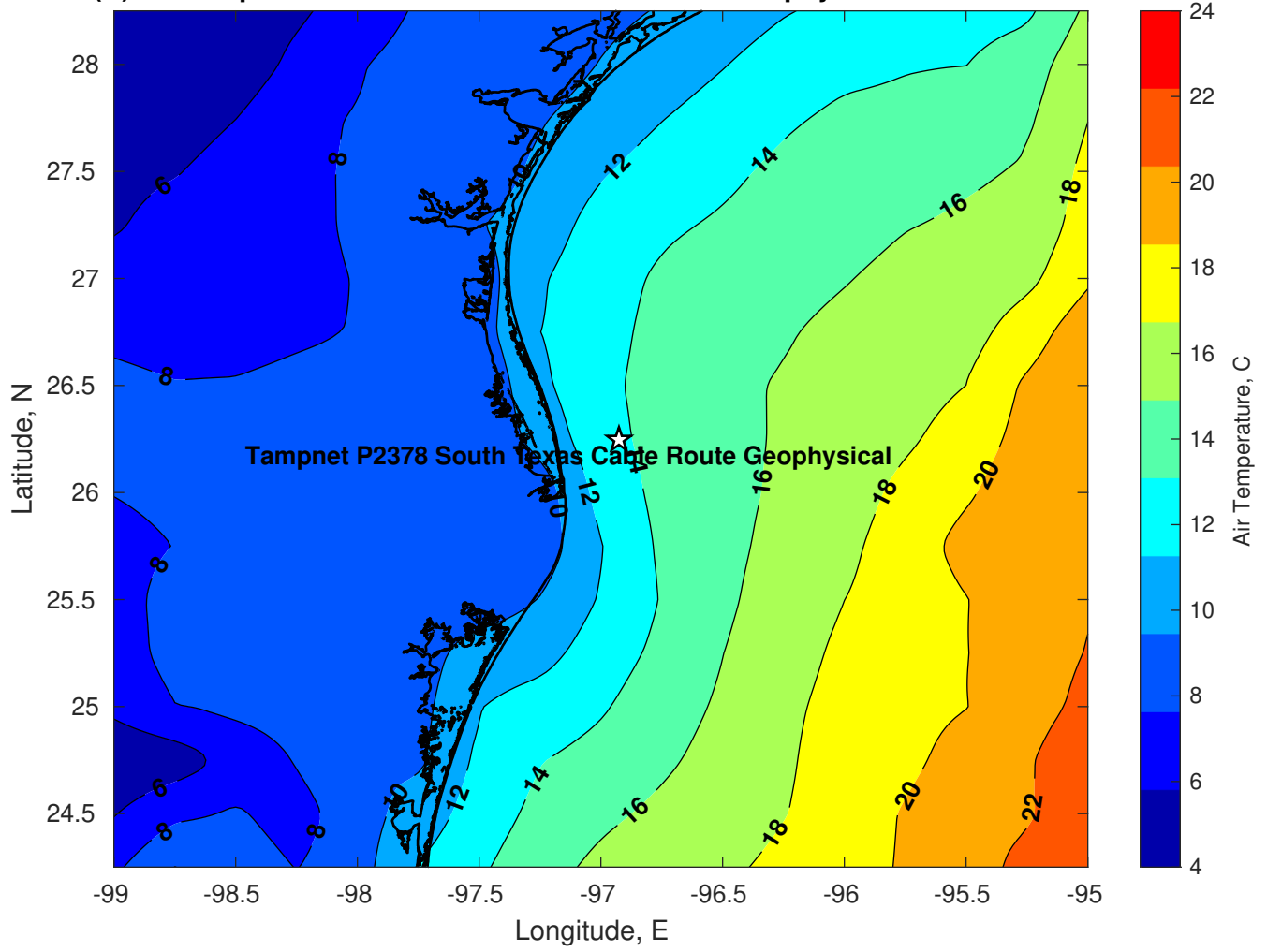
Pressure (mb) for Tampnet P2378 South Texas Cable Route Geophysical at 24-Feb-2025 12:00:00



Air Temperature (C) for Tampnet P2378 South Texas Cable Route Geophysical at 22-Feb-2025



**Air Temperature (C) for Tampnet P2378 South Texas Cable Route Geophysical at 22-Feb-2025**



Air Temperature (C) for Tampnet P2378 South Texas Cable Route Geophysical at 22-Feb-2025

